

OVATION

ROYAL
MTC
MANITOBA THEATRE CENTRE

VOL 31 • NO 1
OCT/NOV 2023

Clue



Based on the screenplay
by Jonathan Lynn

Written by Sandy Rustin

Additional material by
Hunter Foster and Eric Price

Based on the Paramount Pictures Motion Picture
Based on the Hasbro board game CLUE
Original Music by Michael Holland

JOHN
HIRSCH
MAINSTAGE

A Punctuate! Theatre Production

First Métis Man OF ODESA

By Matthew MacKenzie
and Mariya Khomutova

TOM
HENDRY
WAREHOUSE



TOM HENDRY WAREHOUSE
SEASON SPONSOR

BMO





Embrace Your
**INNER
ARTIST**



JAMES RICHARDSON & SONS, LIMITED

ESTABLISHED 1857

AND AFFILIATED COMPANIES

Proudly supporting and celebrating arts, culture and creativity in our community.

MESSAGE FROM THE ARTISTIC DIRECTOR



Welcome to Royal MTC's 2023/24 season! We are thrilled to have you join us for another year of extraordinary theatre.

We kick off this year with two wonderful season openers on our Mainstage and Warehouse stages. And though they are wildly different plays, they are united by one common denominator, they are both designed to tickle the funny bone. Now while this seems obvious in the ridiculous farce that is *Clue*, it is less expected in *First Métis Man of Odesa*, an international love story that spans both the pandemic and the outbreak of war. But laughter is a powerful medicine and perhaps humour is the very best way for us to confront our world right now. And truly, what's more fun than a good old belly laugh shared amongst an audience.

In programming *Clue*, I knew it appealed on multiple levels to our sense of nostalgia. Whether you played the board game or are a fan of the cult classic movie of the 1980s, this play with its colourful array of dinner guests gathered at Boddy Manor, is sure to delight. Fasten your seatbelts for this incredible stage adaptation as we encounter blackmail, murder, intrigue and too many suspects holding the possible murder weapon. Good comedy should look easy, but the skill, forethought and collective talent of this team is immense, and I salute the precision, detail and hard work that has been put into this production. It is pure joy to bring this show to fruition.

I am equally proud to bring Punctuate! Theatre's *First Métis Man of Odesa* to Winnipeg. This multi-award-winning show, a romantic comedy based on the true story of its creators - a Métis playwright and a Ukrainian actress - tells a tale that is stranger than fiction. And while it promises laughs, it also touches us deeply and reminds us of the resilience of the human spirit and the power of love even amidst the most challenging of circumstances.

It's so good to be back in the theatre. Thank you for joining us and enjoy the show!

A handwritten signature in black ink that reads 'Kelly'.

The Royal Manitoba Theatre Centre is proud to call Manitoba home. Royal MTC is located in Winnipeg on Treaty 1 territory, the lands of the Anishinaabeg, Cree, Oji-Cree, Dakota and Dene peoples, and the National Homeland of the Red River Métis. We are thankful for the benefits sharing this land has afforded us, acknowledge the responsibilities of the Treaties, and embrace the opportunity to partner with Indigenous communities in the spirit of reconciliation and collaboration.

THEATRE ABBREVIATION LEGEND

A.C.T. American Conservatory Theater • San Francisco, CA	Rainbow Rainbow Stage • Winnipeg, MB
Arts Club Arts Club Theatre Company • Vancouver, BC	RNT Royal National Theatre • London, England
ATF Atlantic Theatre Festival • Wolfville, NS	Royal Alex The Royal Alexandra Theatre • Toronto, ON
ATP Alberta Theatre Projects • Calgary, AB	RSC Royal Shakespeare Company • Stratford-upon-Avon, England
BAM Brooklyn Academy of Music • NYC	RWB Royal Winnipeg Ballet • Winnipeg, MB
Bard on the Beach Bard on the Beach Shakespeare Festival • Vancouver, BC	Sarasvati Sarasvati Productions • Winnipeg, MB
Belfry The Belfry Theatre • Victoria, BC	Segal The Segal Centre for Performing Arts • Montreal, QC
Blyth Blyth Theatre Festival • Blyth, ON	Shaw Shaw Festival • Niagara-on-the-Lake, ON
Broadway Theatre district • New York, NY	SIR Shakespeare in the Ruins • Winnipeg, MB
CBC Canadian Broadcasting Corporation	Soulpepper Soulpepper Theatre Company • Toronto, ON
Centaur Centaur Theatre Company • Montreal, QC	Stratford Stratford Festival • Stratford, ON
Citadel The Citadel Theatre • Edmonton, AB	SummerWorks SummerWorks Theatre Festival • Toronto, ON
COC Canadian Opera Company • Toronto, ON	TA Theatre Aquarius • Hamilton, ON
CS Canadian Stage • Toronto, ON	Tarragon Tarragon Theatre • Toronto, ON
Dora Dora Mavor Moore Award • Toronto, ON	TBTR Theatre by the River • Winnipeg, MB
Drayton Drayton Entertainment • Ontario	TC Theatre Calgary • Calgary, AB
Dry Cold Dry Cold Productions • Winnipeg, MB	TIFT Talk is Free Theatre • Barrie, ON
Factory Factory Theatre • Toronto, ON	TNB Theatre New Brunswick • Fredericton, NB
GCTC The Great Canadian Theatre Company • Ottawa, ON	Toronto Free Toronto Free Theatre • Toronto, ON
Grand The Grand Theatre • London, ON	TPM Theatre Projects Manitoba • Winnipeg, MB
HGJT Harold Green Jewish Theatre Company • Toronto, ON	TSO Toronto Symphony Orchestra
Mirvish Mirvish Productions • Toronto, ON	U of M University of Manitoba
Moving Target Moving Target Theatre Company • Winnipeg, MB	U of T University of Toronto
MTYP Manitoba Theatre for Young People • Winnipeg, MB	U of W University of Winnipeg
NAC National Arts Centre • Ottawa, ON	ViC The Village Conservatory for Music Theatre • Winnipeg, MB
Necessary Angel Necessary Angel Theatre Company • Toronto, ON	VP Vancouver Playhouse Theatre Company • Vancouver, BC
Neptune Neptune Theatre • Halifax, NS	West End Theatre district • London, England
NFB National Film Board of Canada	WCT Western Canada Theatre • Kamloops, BC
NTS National Theatre School of Canada • Montreal, QC	WJT Winnipeg Jewish Theatre
Persephone Persephone Theatre • Saskatoon, SK	WSO Winnipeg Symphony Orchestra
PTAM Popular Theatre Alliance of Manitoba • Winnipeg, MB	WST Winnipeg Studio Theatre
PTE Prairie Theatre Exchange • Winnipeg, MB	YPT Young People's Theatre • Toronto, ON
	zone41 zone41 theatre • Winnipeg, MB

OVATION

VOLUME 31, NUMBER 1
OCTOBER/NOVEMBER 2023

Ovation is published six times per theatre season and has an approximate yearly circulation of 85,000.

PRINTING: Premier Printing Ltd.

ADVERTISING INQUIRIES

Savannah Lillies

TELEPHONE: 204 934 0309

EMAIL: slillies@royalmtc.ca



Royal Manitoba Theatre Centre
174 Market Avenue
Winnipeg, MB R3B 0P8
Canada

RoyalMTC.ca

BOX OFFICE: 204 942 6537

ADMINISTRATION: 204 956 1340

FAX: 204 947 3741

Royal MTC is a member of the Professional Association of Canadian Theatres and engages, under the terms of the Canadian Theatre Agreement, professional artists who are members of the Canadian Actors' Equity Association.

Scenery, Carpentry and Show Running Crew at the John Hirsch Mainstage and the Tom Hendry Warehouse are members of IATSE Local 63.

USHERS • Royal MTC's loyal volunteer ushers are available at every performance to assist patrons.

LATECOMERS • Latecomers will be seated at the discretion of the House Manager.

COURTESY TO OTHERS • Talking, candy wrappers and coughing are distracting to fellow patrons and actors. We ask each patron to please keep noise to a minimum during a performance. Thank you for your cooperation.

SCENTS AND ALLERGIES • A number of Royal MTC patrons have expressed concerns regarding medical reactions caused by scented products, so much so that they can't enjoy the show. Please consider others before using items such as colognes, perfumes and hairspray. Your thoughtfulness is appreciated.

HEARING ENHANCEMENT • Sennheiser Infrared Listening Devices are available free of charge in the lobby at the John Hirsch Mainstage and Tom Hendry Warehouse, supplied by the Royal MTC Volunteer Corps of Ushers Capital Campaign donation. Please see the House Manager for details.

PROHIBITED • The use of cameras and recording devices is strictly prohibited. Mobile devices must be turned off. To be contacted in an emergency, leave your name and seat number with the House Manager.

WARNINGS • On occasion, Royal MTC's productions may contain script-specific smoking of non-tobacco products, special effects and language/content warnings. For more information on specific productions, please visit royalmtc.ca.

THE ACE BURPEE SHOW LOVES THE ARTS AND WE LOVE THE ROYAL MTC!
WISHING YOU ALL A WONDERFUL 23/24 SEASON!



THE ACE BURPEE SHOW



LISTEN WEEKDAY MORNING 5:30 - 10

AVAILABLE ON
iHeartRADIO

TAYLOR McCAFFREY LAWYERS

Taylor McCaffrey proudly supports the Royal MTC and gratefully acknowledges the rich contribution made by Manitoba's Arts Community to our province.

Who doesn't love a classic whodunnit? Clue promises to be an excellent performance filled with laughs and mystery. Are you ready to catch a killer?

Break a leg to all those involved in the production.

2200-201 Portage Ave
Winnipeg, Manitoba | R3B 3L3
204.949.1312 | www.tmlawyers.com



Clue's History is No Mystery!

It was a *dark and stormy* night in 1943 when English musician Anthony E. Pratt conceptualized the delightfully devious game *Clue*. Well, it probably wasn't dark and stormy so much as dull. Pratt is said to have conceived the idea during the air-raid blackouts of WWII as a way to pass time. The idea came from a parlour game from the pre-war parties he so desperately missed.

The premise? Six colourful characters race to catch Mr. Boddy's killer by determining the murderer, weapon and location. Originally named *Murder* and known as *Cluedo* (a portmanteau of the words clue and ludo, which means "I play" in Latin) in the UK, *Clue* turns its players into deductive detectives and suspicious suspects all working to answer the question "Whodunnit?"

The first patent for the game featured 10 characters and nine weapons but was whittled down to the iconic six characters and six weapons we know today: Miss Scarlet, Mrs. White, Mrs. Peacock, Professor Plum, Mr. Green and Colonel Mustard, who may or may

not have wielded a knife, revolver, rope, wrench, candlestick or a lead pipe. As for the murder location, it could have happened in the Hall, Lounge, Dining Room, Kitchen, Ballroom, Conservatory, Billiard Room, Library or Study; all the rooms you would expect in an ominous mansion.

The game, after an initial lull in sales, was well-received across the globe, sparking a 1985 movie of the same name. The fast-paced farce featured three different endings with different suspects being outed as the killer. Originally flummoxed by the request to turn *Clue* into a movie because the board game "has no story", Jonathan Lynn still agreed to join the project, co-writing and directing the film. Looking back on making a movie out of relatively thin source material, Lynn said, "You could make a good movie or a shitty one, based on anything."

A mysterious dinner party and colour-based pseudonyms set the stage for the blackmail-fuelled whodunnit. The motion picture featured industry heavy hitters such as Christopher Lloyd



whose blockbuster success *Back to the Future* was released the same year, Madeline Kahn and Tim Curry, who was no stranger to cult classics. Curry, often regarded as the campy heart of the movie, was actually the director's third choice for the uptight Wadsworth. Thankfully, in the end, Curry took on the iconic role further cementing himself as a cult classic champion.

On December 13, 1985, *Clue* was released with each theatre receiving a cut of the movie with one of three endings... and it flopped. We mean really and truly *flopped*. The film received a poor response from critics and moviegoers alike, netting less in box office than its \$15 million budget. But like every true cult classic it rose from the ashes of harsh public opinion.

Clue's failure at the box office helped springboard it into a more accessible medium: cable television. When looking to fill non-peak time slots, the inexpensive movie proved to be a great choice for programmers. With no cussing and a fully clothed cast, the film was, albeit unintentionally, a perfect fit for TV. This is where, in the 90s, a younger

generation watching late night TV was able to discover the farce. Not tainted by the collective knowledge of the movie's perceived shortcomings, they loved it.

When it came time to adapt *Clue* for the stage, playwright Sandy Rustin described the project as a "puzzle". She needed to balance the demands of translating the show into the new, live medium while honouring what fans loved about the original film.

To keep the fast-paced, nonstop feeling of the film, Rustin knew pacing was of utmost importance. She likens the show to a train, and not a slow one at that, with no appropriate stopping point to allow an intermission. The train must keep moving, resulting in a 90-minute show, with straight-through action, laughs and suspense. Heightening the urgency and immediacy of the play, the quickfire dialogue and physical comedy will be sure to invoke a nostalgic response from fans.

What's next for *Clue*? With a board game, a movie, a musical and a play, the game is well on its way to world domination. ●

SOURCES: MENTALFLOSS.COM, HISTORY.COM, CLUEDOFAN.COM, BUZZFEED.COM, THEATERMANIA.COM, NJ.COM

The Colourful Cast of Characters

MR. GREEN

A timid yet officious rule follower. He's awfully anxious.



COLONEL MUSTARD

A puffy, pompous, dense blowhard of a military man.

MRS. PEACOCK

The wealthy wife of a senator. A bit batty, neurotic and quick to hysteria.

PROFESSOR PLUM

An arrogant academic, easily impressed by himself.

MISS SCARLET

A dry, sardonic DC madam, more interested in secrets than sex.

MRS. WHITE

A morbid and tragic woman. Mrs. White may or may not be the murderer of her five ex-husbands. ●

Sketches by Set & Costume Designer Brian Perchaluk



Proud to support
Pimootayowin
Creators Circle.

We are working together with **Royal Manitoba Theatre Centre**.
It's just one way we are helping to open doors for a more inclusive
and sustainable tomorrow.

td.com



® The TD logo and other TD trade-marks are the property of The Toronto-Dominion Bank. M05636 (1019)

Action.
Performance.
Adjustments.

Details. Details. Details.

Manage the vision.
Bring it to life.

We pay attention
to everything.
The focus is on you.

You belong in the company of leaders.
lawtonpartners.ca

 **Lawton Partners**
WEALTH MANAGEMENT

PRESENTS

A CO-PRODUCTION WITH THE GRAND THEATRE

Clue

Based on the screenplay by Jonathan Lynn

Written by Sandy Rustin

Additional Material by Hunter Foster and Eric Price

Based on the Paramount Pictures Motion Picture

Based on the Hasbro board game CLUE

Original Music by Michael Holland

October 19 - November 11, 2023

PREVIEWS October 17 & 18

Director Dennis Garnhum
Set & Costume Designer Brian Perchaluk[†]
Lighting Designer Kevin Lamotte
Intimacy Director Sharon Bajer[†]
Fight Director Jacquie Loewen
Apprentice Director Theresa Thomson*
Apprentice Set & Costume Designer Julia Anderson**
Stage Manager Michael Duggan**
Assistant Stage Manager Samantha Desiree
Apprentice Stage Manager Jazz Marcelino[†]

SETTING: Boddy Manor, located not too far from Washington, DC. A dark and stormy night in 1954.

Clue is performed without an intermission.

By special arrangement with The Araca Group, Work Light Productions,
and Michael Barra/Lively McCabe Entertainment.

Clue: On Stage is presented by special arrangement with Broadway Licensing, LLC
servicing the Dramatists Play Service collection.
www.dramatists.com

Note to audience: The videotaping or audio and/or visual recording of this production
is a violation of United States Copyright Law and an actionable federal offense.

Performance & rehearsal musical tracks provided by Right on Cue Services.
www.rightoncueservices.com

Production photography by Dylan Hewlett.

*Position funded through the Jean Murray - Moray Sinclair Theatre Apprenticeship Program

[†]Past Jean Murray - Moray Sinclair apprenticeship or scholarship recipient

[†]Past Naomi Levin Theatre Scholarship award winner

Clue

THE CAST (IN ALPHABETICAL ORDER)

<i>Mrs. Peacock</i>	Sharon Bajer†
<i>Mrs. White</i>	Petrina Bromley
<i>Unexpected Cop / Backup Cop</i>	Rosie Callaghan
<i>Motorist / Backup Cop / Newscaster</i>	Kamal Chioua
<i>Colonel Mustard</i>	Beau Dixon
<i>Mr. Boddy / Chief of Police</i>	Alex Furber
<i>Wadsworth</i>	Jesse Gervais
<i>Mr. Green</i>	Toby Hughes
<i>Miss Scarlet</i>	Reena Jolly
<i>The Cook / Singing Telegram Girl / Backup Cop</i>	Tracy Penner†
<i>Professor Plum</i>	Derek Scott
<i>Yvette / Backup Cop</i>	Rosalie Tremblay

UNDERSTUDIES (IN ALPHABETICAL ORDER)

Understudies never substitute for listed performers unless a specific announcement is made at the time of their appearance.

<i>The Cook / Singing Telegram Girl,</i> <i>Mrs. White, Miss Scarlet</i>	Rosie Callaghan
<i>Wadsworth, Colonel Mustard,</i> <i>Mr. Boddy / Chief of Police</i>	Kamal Chioua
<i>Mr. Green, Professor Plum, Motorist</i>	Alex Furber
<i>Yvette, Mrs. Peacock, Unexpected Cop</i>	Tracy Penner†

UNDERSTUDIES FUNDED BY



Understudies are funded by the Government of Canada under the Community Services Recovery Fund.
Understudies sont financés par le gouvernement du Canada sous le Fonds de relance des services communautaires.

SYNOPSIS – On a dark and stormy night, six eccentric strangers are invited to a remote mansion for an unusual dinner party. The guests with their assigned aliases – Colonel Mustard, Professor Plum, Miss Scarlet, Mr. Green, Mrs. Peacock and Mrs. White – are blackmailed by their mysterious host, Mr. Boddy, who threatens to expose their past wrongdoings to the police. Giving each guest the gift of a lethal weapon (candlestick, wrench, lead pipe, dagger, revolver and rope), Mr. Boddy states that if one of the guests can eliminate Wadsworth, the butler, he will rid them of the blackmail and be done with their business once and for all. With the police on the way, Mr. Boddy switches off the lights, but when they are turned back on the victim is not who anyone expected. The guests must then race against the clock to discover the identity of the murderer as more and more bodies begin to drop. ●



Sharon Bajer

*Mrs. Peacock /
Intimacy Director*

ROYAL MTC (selected) Actor: *The Three Musketeers, Sense and Sensibility, Kill Me Now* (with NAC), *Hand to God, Late Company, The Seagull, A Christmas Story, August: Osage County, Top Girls, Steel Magnolias, Humble Boy, Of Mice and Men, Angels in America, Les Belles-Soeurs, Our Country's Good*. Intimacy Director: *Sexual Misconduct of the Middle Classes, Into the Woods, New*.

OTHER THEATRE *Afterlight* (The Keep/Walk&Talk/Rainbow); *The Outside Inn* (upcoming at PTE); *The Wizard of Oz* (Rainbow).

TRAINING Studio 58, Michael Langham Directing Program (Stratford). Certified Intimacy Director (ICC and IDC).

FILM/TV Recent projects include *Little Bird, Written in the Stars, Dark Harvest, Ordinary Angels, Acting Good, Run*; Intimacy Coordinator for *The Porter, SkyMed, Wintertide, El Toro, Alter Boys, Little Bird* and *Don't Even*.

ET CETERA sharonbajer.com



Petrina Bromley

Mrs. White

ROYAL MTC First appearance.

OTHER THEATRE *Come From Away: You Are Here* (Gander Arts and Culture Centre); *Come From Away* (La Jolla Playhouse, Seattle Rep, Royal Alexandra, Broadway); *As You Like It* (Stratford); *Tartuffe, The Sound of Music, Enron* (NAC).

FILM/TV Film: *Come From Away* (Apple TV+); *You Are Here: A Come From Away Story* (The Movie Network). TV: *Son of a Critch* (CBC, The CW); *Surreal Estate* (Syfy); *Republic of Doyle* (CBC).



Rosie Callaghan

*Unexpected Cop /
Backup Cop*

*Understudy: The Cook /
Singing Telegram Girl,
Mrs. White, Miss Scarlet*

ROYAL MTC First appearance.

OTHER THEATRE *UnCovered: The Music of ABBA* (Musical Stage Co.); *April Fools* (Segal); *Frankenstein: A Living Comic Book* (Kidoons/Geordie/Segal); *Rumour Has It* (Port Hope); *Last Night at The Gayety* (Centaur); *Antigone, Wind in the Willows* (Two Planks and a Passion); *Robin Hood* (Festival Antigonish); *Ed & Ed's New B&B, Neddy Norris Night* (Gros Morne Theatre Festival).

FILM/TV *Painkiller* (Netflix); *Fatal Vows* (Investigation Discovery); *Jane Krakowski: Get Happy* (CBC/Just For Laughs).

TRAINING Graduate of Dawson College's Professional Theatre Program, and of Randolph College of the Performing Arts.

ET CETERA Musical Stage Company Banks Prize Winner 2021/2022. Love to Goose for his constant support.



PROUD TO PARTNER



The Grand Theatre is proud to partner with Royal Manitoba Theatre Centre in this co-production of CLUE



519.672.8800



GRANDTHEATRE.COM



GRAND THEATRE BOX OFFICE
471 RICHMOND STREET
LONDON, ON N6A 3E4



BASED ON THE SCREENPLAY BY JONATHAN LYNN
WRITTEN BY SANDY RUSTIN

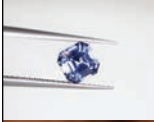
ADDITIONAL MATERIAL BY HUNTER FOSTER AND ERIC PRICE
BASED ON THE PARAMOUNT PICTURES MOTION PICTURE
BASED ON THE HASBRO BOARD GAME CLUE
ORIGINAL MUSIC BY MICHAEL HOLLAND



*Find Us in
London!*

GRANDTHEATRE

WORLD CURIOUS. LONDON PROUD.

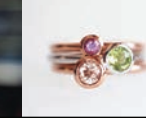
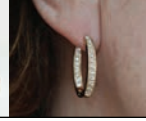


**DIAMOND
GALLERY**

1735 CORYDON AVENUE

Locally owned and operated by the Malbrank family since 1992. Specializing in Canadian crafted custom designs and responsibly sourced gemstones. Shop online 24/7 or contact us to book your professional jewellery consultation.

DIAMOND-GALLERY.COM





Kamal Chioua

Motorist / Backup Cop / Newscaster

Understudy: Wadsworth, Colonel Mustard, Mr. Boddy / Chief of Police

ROYAL MTC First appearance.

OTHER THEATRE *RENT, The Wizard of Oz* (Rainbow); *The Velveteen Rabbit* (MTYP); *End of the Line* (Walk&Talk); *School of Rock* (WST).

TV *The Spencer Sisters* (CTV); *SkyMed* (Paramount+); *Tales from the Loop* (Amazon Prime).

TRAINING The Village Conservatory, Theatre and Film BA from the University of Winnipeg.

ET CETERA Kamal would like to thank his mother, father and granny for their never-ending support, as well as his brother Zach for playing The Simpsons Clue board game for endless hours as kids.



Beau Dixon

Colonel Mustard

ROYAL MTC First appearance.

OTHER THEATRE *Guys and Dolls, HMS Pinafore, Freedom Cabaret: The Spirit and Legacy of Black Music, Freedom 2.0: Black Music that Shaped the Dream of America* (Stratford); *Harlem Duet, Hamlet, Orphan Song* (Tarragon); *The Father, Marjorie Prime* (Coalmine Theatre); *Ghost Quartet, Shape of Home: Songs in Search of Al Purdy* (Crow's Theatre).

TV *Station Eleven* (Paramount/HBO Max); *The Expanse* (Amazon Prime).

ET CETERA Beau has received three Dora Mavor Moore Awards for Male Performance, New Play (TYA) *Beneath Springhill* (Creator); Musical Direction

Shape of Home (Co-Creator); Two Toronto Critics Awards; Calgary Critics Award; and is a KM Hunter Award Finalist. Beau has toured extensively throughout Canada, the US and Europe as a recording artist and performer. He has three solo albums under his name, available on iTunes and other streaming platforms. beaudixon.com



Alex Furber

Mr. Boddy / Chief of Police

Understudy: Mr. Green, Professor Plum, Motorist

ROYAL MTC Cliff Bradshaw in *Cabaret*.

OTHER THEATRE *A Few Good Men, Buying the Farm, The War Show, Marathon of Hope, Brighton Beach Memoirs* (Drayton); *The Bluff* (Orangeville); *George Bailey in It's a Wonderful Life* (WCT); *Salt-Water Moon* (Guild Festival Theatre); *As You Like It, Taming of the Shrew* (St. Lawrence Shakespeare Festival); *Robert Ross in The Wars, Chariots of Fire* (Grand); *My Night with Reg* (Studio 180/Mirvish); *Jitters* (Soulpepper); *Gilbert Blythe in Anne & Gilbert* (NAC); *Albert Narracott in War Horse* (Mirvish).

FILM/TV *Macy Murdoch, Most Dangerous Game, Reign, Murdoch Mysteries, Mayday, Flashpoint*.

TRAINING Alex is a graduate of the National Theatre School of Canada.



RARE EXQUISITE WORLDLY

WE'RE MAKING
EXOTIC TASTES
EASY TO FIND.



Distinctions
EXCEPTIONAL WINES & SPIRITS

Distinctions brings together some of the world's most exclusive wines and spirits. Whether you're a connoisseur or simply curious, you'll appreciate the care that goes into our hand-picked collection. Explore our rare selection and take home something priceless today.


SERVING MANITOBA SINCE 1923

 LiquorMarts.ca | **18+** ENJOY RESPONSIBLY

GRANT PARK LIQUOR MART
1120 GRANT AVENUE



THE WALTZ

BY MARIE BEATH BADIAN

*A sweet romantic comedy
about young love*

November 14 - 29, 2023

SPONSORED BY
GAIL ASPER
FAMILY FOUNDATION
Anthony Perpuse, Erica Leobrera | Photo by Dahlia Katz

Cherry Karpyschin Mainstage Theatre
3rd FLOOR OF PORTAGE PLACE

PTE
PTE.mb.ca



Jesse Gervais
Wadsworth

ROYAL MTC First appearance.

OTHER THEATRE *The Breathing Hole* (NAC); *Grand Ghosts* (Grand); *Jane Eyre*, *The Silver Arrow*, *Crazy for You*, *Alice Through the Looking-Glass*, *One Man Two Guvnors*, *Measure for Measure*, *A Christmas Carol* (Citadel); *Romeo and Juliet*, *Love's Labour's Lost* (Free Will Players); *6.0 Heap and Pebble*, *4th Graders Present...*, *Fat Pig* (Northern Light Theatre); *10\12*, *Passion Play*, *The Realistic Joneses* (Wild Side Productions); *Buddy*, *Little One*, *Let the Light of Day Through* (Theatre Network); *Joy Ride*, *Black Horse* (Caravan Farm Theatre).

FILM/TV *Tiny Plastic Men* Seasons 1-4 (Super Channel); *Caution May Contain Nuts* (APTN); *Blind Ambition: The Wop May Story*.

TRAINING Jesse has a BFA from the University of Alberta.

ET CETERA Look for Jesse in *A Christmas Carol* at the Citadel Theatre and *Women of the Fur Trade* at NAC\Native Earth.



Toby Hughes
Mr. Green

ROYAL MTC *Yaga*, *All is Bright*, *Women of the Fur Trade*, *It's a Wonderful Life: The Radio Play*, *Nine Dragons* (with Gateway/Vertigo), *Sarah Ballenden*, *Hand to God*, *Alice Through the Looking-Glass*, *Shakespeare's Dog* (with NAC).

OTHER THEATRE Selected: *The Golem's Mighty Swing*, *After Jerusalem* (WJT); *Chicago* (Pizza Party Productions); *Mr. Burns: a Post-Electric Play* (District Theatre);

Outside Joke: The Improvised Musical, *Outside Joke: Big Dickens Energy* (Outside Joke/PTE); *The Hound of the Baskervilles*, *The Valley*, *The Dishwashers* (PTE); *Le Jardin* (Cercle Molière); *The Winter's Tale/Le Conte d'Hiver* (SIR/Cercle Molière); *Henry IV*, *Henry V*, *Julius Caesar*, *The Comedy of Errors*, *Richard III*, *Antony and Cleopatra* (SIR); *The Snail and the Whale*, *House at Pooh Corner*, *The Hobbit*, *Liars* (MTYP).

FILM/TV *Sniper: Rogue Mission*, *Tales from the Loop*, *Channel Zero*, *The Pinkertons*, *Todd and the Book of Pure Evil*.

TRAINING University of Winnipeg.

ET CETERA Toby is a founding member of the musical improv company Outside Joke.



Reena Jolly
Miss Scarlet

ROYAL MTC *Trouble in Mind* (with Citadel), *Network* (with Citadel).

OTHER THEATRE *Perfect Wedding* (Thousand Islands Playhouse); *Cabaret*, *Venus*, *Assistance*, *A Midsummer Night's Dream* (NTS); *Hamlet* (SIR); *Torn Through Time* (MTYP); *Home 2.0*, *New Beginnings*, *Shattered* (Sarasvati); *Marat/Sade*, *Nothing Sacred*, *After Magritte*, *Titus Andronicus* (Black Hole Theatre).

FILM/TV *Christmas Commission*, *Made for Each Other*, *Love in Design*, *Journey Back to Christmas* (Hallmark); *Don't Even* (Bell Media/Crave); *The Elizabeth Thomas Story* (Lifetime); *Channel Zero* (Syfy).

TRAINING Graduate of the NTS Acting Program 2022. U of M – Black Hole Theatre Graduate of 2018.

ET CETERA Love always to my family xoxo! Special shoutout to Ms. Bays, Happy Retirement! <3

HERMANOS

RESTAURANT & WINE BAR

JOIN US FOR DINNER
BEFORE THE SHOW!

MTC SEASON TICKET HOLDERS RECEIVE 15% OFF

179 BANNATYNE AVE | WINNIPEG, MANITOBA R3B 0R5

For reservations book at Hermanos.ca or call **204-219-0779**



Tracy Penner

The Cook / Singing Telegram Girl / Backup Cop

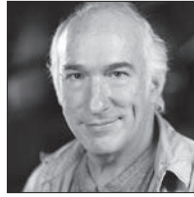
Understudy: Yvette, Mrs. Peacock, Unexpected Cop

ROYAL MTC *Into the Woods, It's a Wonderful Life: The Radio Play, Private Lives, The Seagull, Ed's Garage, Top Girls, Camelot* (with Citadel/TC).

OTHER THEATRE Selected theatre in Edmonton: *Shoe!* (Vault: Theatre of Invention); *A Year of Winter* (Shadow); *Frankenstein* (Catalyst); *Three Mysterious Women* (StageLab Festival, U of A). Selected theatre in Winnipeg: *A Short History of Crazy Bone, John and Beatrice, The Moonlight Sonata of Beethoven Blatz* (TPM); *Shiksa* (WJT); *Village Wooing* (zone41); *Passion* (Red Hen); *Fefu and Her Friends, Eden* (Sarasvati); *Awaken*, a new play by Tracy Penner, featuring Tracy as Paulina (zone41/SIR).

FILM/TV *The Elizabeth Thomas Story, Psycho Killer, Spencer Sisters, Somebody's Someone, The Grudge, Scopophobia.*

TRAINING Graduate of the BFA Acting Program at the University of Alberta.



Derek Scott

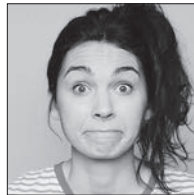
Professor Plum

ROYAL MTC *Barnum* (with Grand, 1985).

OTHER THEATRE Lead role in *Slava's Snowshow* (World Tour including Broadway and London's West End - the show received a Tony Nomination and Drama Desk Award for Unique Theatrical Experience); *The Neverending Story* (YPT/NYU Skirball Center); *The Overcoat* (World Tour including London's Barbican); *Cirque du Soleil*; *Stratford.*

FILM/TV *Gooby in Gooby; Tah Dahl, featuring Derek Scott; The Tracey Fragments; The State Within* (BBC); *Just For Laughs.*

ET CETERA Derek also founded the Brisbane International Comedy Bananza in Australia which was the subject of a one-hour documentary, *Telemabanana*. Derek has performed his solo work in over 40 countries, from Brazil to Bahrain, from Australia to Ethiopia, from Las Vegas to North Korea (yes, NORTH Korea). Hi (my grandson) Archer!



Rosalie Tremblay

Yvette / Backup Cop

ROYAL MTC First appearance.

OTHER THEATRE *Insert Clown Here* (Parlous Theatre); *King Henry Five* (Driftwood).

TRAINING Rosalie is a graduate of the National Theatre School of Canada.

ET CETERA Rosalie is a stand-up comedian, sketch performer and actor in Toronto, and is so happy to be HERE! Can't wait to share this show with whomever you are.



ELEVATING ARTS AND CULTURE

Air Canada is a proud airline partner of the Royal Manitoba Theatre Centre's Black & White Ball. We soar together when we support arts and cultural institutions in the communities we serve.

#flytheflag @aircanada

ÉLEVONS LES ARTS ET LA CULTURE

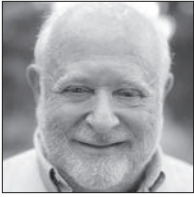
À titre de transporteur aérien, Air Canada est fière partenaire de l'événement Black & White Ball du Royal Manitoba Theatre Centre. En soutenant les institutions culturelles et artistiques dans les collectivités que nous desservons, nous les aidons à aller toujours plus haut, avec nous.

#HautLeDrapeau @aircanada

A STAR ALLIANCE MEMBER
MEMBRE DU RESEAU STAR ALLIANCE



AIR CANADA



Jonathan Lynn

Original Screenwriter

Jonathan Lynn has directed 10 feature films including the cult classic *Clue* (he also wrote the screenplay), *Nuns on the Run* (also written by him), *My Cousin Vinny*, *The Distinguished Gentleman*, *Sgt. Bilko*, *Greedy*, *Trial and Error*, *The Whole Nine Yards*, *The Fighting Temptations* and most recently, *Wild Target*. His first produced screenplay was *The Internecine Project* (1974). For television, Jonathan's writing credits include dozens of episodes of various comedy series but he is best known for the phenomenally successful, multi-award-winning BBC series *Yes Minister* and *Yes, Prime Minister*, co-written and created with Antony Jay. His numerous awards include the BAFTA Writers Award, Writers Guild (twice), Broadcasting Press Guild (twice), NAACP Image Award, Environmental Media Award, Ace Award - Best Comedy Series on US cable, and a special award from the Campaign For Freedom of Information. Lynn received an MA in Law from Cambridge University and now lives in New York, describing himself as a recovering lawyer.



Sandy Rustin

Writer

Sandy Rustin is an actress and award-winning playwright named by *American Theatre Magazine* as one of the "Most-Produced Playwrights of the 2022/23 season." Her stage adaptation of the film *Clue* is one of the most-produced plays in the US, with over 3,000 productions

worldwide. Her original comedy, *The Cottage*, premiered on Broadway in July 2023 at The Hayes Theatre (Jason Alexander, director). Other works include: the concert adaptations of *Dear World* and *I Married An Angel* for New York City Center Encores!, Mattel's *American Girl Live*, *The Suffragette's Murder* (upcoming premiere), *Rated P for Parenthood* (Off Broadway/ABC-TV), *Houston* (New American Musical Award), *Always Something There* for Primary Wave Music, and many others. Sandy serves on the Board of Camp Kesem, helping children through a parent's cancer diagnosis. She lives in Maplewood, NJ with her husband and two sons. sandyrustin.com, Instagram: @sandyrustin_



Hunter Foster

Additional Material

Hunter Foster is an Artistic Associate at the Bucks County Playhouse where he directed: *Clue: On Stage* (World Premiere), *Guys and Dolls*, *Company*, *Ain't Misbehavin'*, *The Buddy Holly Story* (2016, 2017), *National Pastime*, *The Rocky Horror Show* (2013, 2014, 2016, 2017), *Summer of '42*, and *It's a Wonderful Life*. As a writer, he co-wrote the stage adaptation of the movie *Clue*, and has written the books to two Off-Broadway musicals: *Jasper in Deadland* and *Summer of '42* (Outer Critic Award nomination for best new Off-Broadway musical). As an actor, he has appeared on Broadway in *The Bridges of Madison County*, *Hands on a Hardbody*, *Million Dollar Quartet*, *The Producers*, *Little Shop of Horrors* (Tony Award nomination), *Urinetown*, *Les Miserables*, *Footloose*, *Grease* and *King David*. Hunter is a graduate of the University of Michigan (BFA in Musical Theatre).



Eric Price

Additional Material

Eric Price has written the lyrics and book to the musicals *The Violet Hour*, *Radioactive*, *Presto Change-o*, *Around the World*, *Hello Out There*, *The Sixth Borough* and additional material for the stage adaptation of the film *Clue*. His work has been produced at theatres in New York, around the US and in Europe. Production experience includes work at Manhattan Theatre Club, Roundabout Theatre, Goodman Theatre, The Kennedy Center, Menier Chocolate Factory, Barrington Stage, Symphony Space, Merkin Recital Hall, Minetta Lane Theatre, Audible.com, Joe's Pub, 54 Below (including solo show), Birdland, the Ravinia Festival and more. Eric's adaptation of Jane Austen's *Emma* was commissioned in 2015 and has had over 150 productions around the world. Eric was also the long-time assistant to 21-time Tony Award-winning director/producer Hal Prince and worked with him over the course of 12 years on the development of new musicals.



Michael Holland

Original Music

Michael Holland is a multi-talented artist with work across the entire musical spectrum. His orchestration and vocal arrangement work can be heard on the 2011 *Godspell* revival cast recording (co-producer). As a composer and lyricist he has written *Horizon Line* (Theatre Latté Da, Minneapolis), *Hurricane* (NYMF) and *Believe in Me... a Bigfoot Musical*

(fringeNYC). He has written incidental music for various theatre companies including Playwrights Horizons, The Alley Theatre, The Old Globe, Dallas Theater Center, Colorado Shakespeare Festival, Julliard and NYU Tisch. As a performer/arranger/music director he created the multi-award-winning alt-cabaret favourite *Gashole!* (2001-2013). His orchestrations include *Emma! A Pop Musical* (Stageworks), *Disco Party* and *The Best Christmas Pageant Ever* (Playscripts). Recordings include four solo CDs of original music, as well as the world premiere of *Another Day in the Modern World* on The Maury Yeston Songbook (ps classics).



Dennis Garnhum

Director

ROYAL MTC *Three Tall Women*, *Of Mice and Men* (with Citadel), *Closer*, *To Kill A Mockingbird* (with Citadel), *Vinci* (with NAC).

OTHER THEATRE Highlights: *Barber of Seville* (Florida Grand Opera/Vancouver Opera), *Cabaret*, *Prom Queen* (Grand); *Timothy Findley's The Wars*, *Lost - A Memoir* (TC); *Twelfth Night* (Bard on the Beach); *S.S. Tenacity* (Shaw); *Trials of Ezra Pound* (Stratford).

TRAINING Masters Degree - Direction - University of British Columbia.

ET CETERA Recipient of the Queen Elizabeth Diamond Jubilee Medal. Dennis was the Artistic Director of the Grand Theatre for seven seasons and at Theatre Calgary for 11 seasons. Dennis recently wrote *TOWARD BEAUTY: Reigniting a creative life on the Camino de Santiago*, which follows his 830 km walk across Spain (amazon.ca).



Brian Perchaluk

Set & Costume
Designer

ROYAL MTC Recent and favourites: *Burning Mom*, *The Three Musketeers*, *The Color Purple* (with Citadel), *The Cottage*, *John*, *The Humans*, *Once* (with Grand), *Sarah Ballenden*, *Black Coffee*, *Billy Elliot the Musical*, *Harvey*, *August: Osage County*, *The Lonesome West*, *Patience*, *Picasso at the Lapin Agile* (with NAC), *M. Butterfly* (with NAC).

OTHER THEATRE Brian's work has been featured at theatres across the country, including two seasons each at the Shaw and Stratford festivals. Selected recent credits include: *La Cantatrice chauve* et *La Leçon* (Théâtre Cercle Molière); *The Whipping Man* (WJT); *The Hockey Sweater* and *The Little Mermaid* (Rainbow); *Post Democracy* (PTE).

TRAINING Graduate of U of W and NTS.

ET CETERA Recipient of Gemini, Jessie Richardson, Prix Rideau and Evie Awards.



Kevin Lamotte

Lighting Designer

ROYAL MTC *One Flew Over the Cuckoo's Nest* (with TC), *The Innocent Eye Test* (with Mirvish), *The Night of the Iguana* (with Rubicon), *A Streetcar Named Desire* (with Citadel), *To Kill a Mockingbird* (with Citadel), *Billy Bishop Goes to War* (with Grand/NAC/Chris Wooten), *Of Mice and Men* (with Citadel), *Dr. Jekyll and Mr. Hyde* (with CS/TC/VP), *The Philadelphia Story* (with TC), *The Monument* (with CS/Necessary Angel), *Dancing at Lughnasa* (with NAC), *Hedda Gabler*, *Medea*.

OTHER THEATRE *Mahabharata* (Barbican); *Blithe Spirit*, *Playboy of the Western World*, *The Clearing*, *Gem of the Ocean*, *Everybody*, *Desire Under the Elms*, *White Christmas* (Shaw); *La Traviata* (Opéra de Montréal); *Fidelio* (Pacific Opera).

ET CETERA Kevin has created lighting designs across Canada and internationally. He is the Director of Lighting Design at the Shaw Festival and a member of the Associated Designers of Canada/IATSE 659.



Jacquie Loewen

Fight Director

ROYAL MTC Fight Director (selected): *Yaga*, *Into the Woods*, *The Rez Sisters*, *Roald Dahl's Matilda the Musical* (with Arts Club/Citadel), *Vietgone* (with fu-GEN/Hope and Hell), *Hand to God*, *Private Lives*, *Gone With the Wind*, *August: Osage County*, *Romeo and Juliet*, *The Seafarer*. Actor: *The Three Musketeers*, *Alice Through the Looking-Glass*, *Top Girls*.

OTHER THEATRE Fight Director (selected): *Macbeth* (Bard on the Beach); Indigenous Playwrights New Works Workshop (PTC - Vancouver); *Beauty and the Beast* (Rainbow); *The Flood Thereafter* (CS); *Don Giovanni* (Manitoba Opera); *Macbeth*, *The Merry Wives of Windsor*, *The Taming of the Shrew* (SIR); *Prairie Nurse* (PTE).

TEACHING U of Winnipeg, U of Manitoba, Trinity Western, Simon Fraser University, Kansas State University.

ET CETERA Jacqueline was a founding member of the Canadian Comedy Award-nominated sketch group Hot Thespian Action.



McNALLY
ROBINSON

Recommended Reading

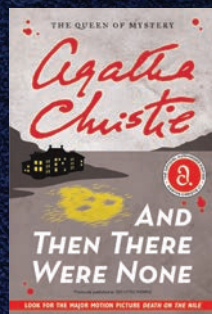
inspired by *Clue*



One by One
by Ruth Ware



Magpie Murders
by Anthony Horowitz



And Then There Were None
by Agatha Christie

McNALLY ROBINSON BOOKSELLERS
1120 Grant Avenue · The Forks · mcnallyrobinson.com

WHEN YOU SUPPORT US, YOU SUPPORT OUR COMMUNITY



McNALLY
ROBINSON

CLUE



Theresa Thomson
Apprentice Director

ROYAL MTC First engagement.

OTHER THEATRE Directing highlights include *Brother Henrick*, *The Hockey Sweater*, *A Flicker of Light on a Winter Night* (MTYP/WSO); and *Sapphire Butterfly Blue* (MTYP Summer Studio). Acting highlights include *Maple Route* (Theatre Incarnate); *Lies of a Promiscuous Woman*, *Macabre Tales* (Winnipeg Fringe); and puppetry for *Home for the Holidays* with Al Simmons (MTYP).

FILM/TV Acting: *Mr. Pow*, *Hindsight* (pilot), (YerStroy Transmedia). On-set mental health support for underage cast: *Blood* (Netflix). Makeup and special effects: *Don't Waste a Precious Minute* (Electric Monk Media). Voice work in hundreds of commercials for TV and radio.

TEACHING 23 years of teaching in schools and programs across Manitoba including at MTYP where she is currently the Assistant Director of Theatre School.

ET CETERA Thanks to Anika and Vern for helping me to get a clue. Love to Sean.



Julia Anderson
Apprentice Set & Costume Designer

ROYAL MTC First engagement.

OTHER THEATRE Scenic Designer: *From Up Here* (U of W). Design Assistant: *A Gentleman's Guide to Love and Murder* (Dry Cold); *Twelfth Night* (SIR).

TRAINING Julia graduated with a Bachelor of Arts Honours in Design for Theatre and Film at University of Winnipeg, was a part of the inaugural year of The Village Conservatory and is in the 2023/24 Creative Manitoba Mentorship Program.

ET CETERA Julia has received the V. Beatrice Shaw Scholarship and had annually obtained the Jean Murray - Moray Sinclair Scholarship throughout her university education.



THEATRE FOR FANS UNDER 30

Looking for a great night out that's easy on your wallet? Theatre Under 30 members, aged 18 - 29, have exclusive access to world-class theatre for just \$20 a seat!

SIGN UP TODAY AT [ROYALMTC.CA/UNDER30](https://royalmtc.ca/under30)

FOR MORE INFORMATION, PLEASE CONTACT
KSENIA BRODA-MILIAN AT UNDER30@ROYALMTC.CA

TENAJ WILLIAMS AND VINNIE ALBERTO IN *INTO THE WOODS*. PHOTO BY LEIF NORMAN.





Michael Duggan
Stage Manager

ROYAL MTC (selected) Stage Manager: *Into the Woods*, *New, Calpurnia* (with NAC/BTW), *Vietgone* (with fu-GEN/Hope and Hell), *Hand to God*. Assistant Stage Manager: *Burning Mom*, *The Mountaintop*, *The Color Purple* (with Citadel), *A Christmas Carol*, *The Curious Incident of the Dog in the Night-Time* (with Citadel), *Chimerica*. 2022/23 National Mentorship Program.

OTHER THEATRE (selected) *The Wizard of Oz* (2022), *Mamma Mia!* (Rainbow Stage); *Space Girl*, *The War Being Waged* (PTE); *The Winter's Tale/Le conte d'hiver* (SIR/TCM); *MTYP's Midwinter Mosey* (MTYP); *The Flying Lovers of Vitebsk* (WJT); *Meet Me at Dawn* (TBTR).

TRAINING B.A. (Hons) in Theatre Production and Stage Management at the University of Winnipeg.

ET CETERA Enjoy the show!



Samantha Desiree
Assistant Stage Manager

ROYAL MTC Apprentice Stage Manager: *Yaga*, *Into the Woods*, *Network*, *The Rez Sisters*, *Orlando*.

OTHER THEATRE SM: *Castor et Pollux*, *Mansplaining Division* (MUO); *Looking Glass*, *Season Launch 22/23* (WCD); Apprentice SM: *The Wizard of Oz* (Rainbow). Apprentice Lighting Designer: *Narrow Bridge* (WJT). Production & Tour Coordinator: *Seven Visions* digital school tour (Sarasvati). Associate Producer/Sound Design: *Othello* (Echo). SM/Production

Assistant: FemFest 2019 & 2020 (Sarasvati). Associate Company Member of Winnipeg Independent Theatre (WIT). Artistic Founder of Beau Theatre Co. Performer Services Manager with the Winnipeg Fringe Theatre Festival.

TRAINING U of W Bachelor of Arts Honours - Stage Management, Production and Design. Creative Manitoba Mentorship in Stage Management 2020/21. Mentorship funded by Associated Designers of Canada in Lighting Design 2022/23.

ET CETERA As always, couldn't do it without my partner, Matt, and cat, Zella.



Jazz Marcelino
Apprentice Stage Manager

ROYAL MTC *Burning Mom*, *Assassinating Thomson* (tour).

OTHER THEATRE Apprenticeships: *RENT*, *The Hockey Sweater: A Musical*, *MA-BUHAY!* *Filipinos Singing for Their Lives - A New Musical* (Rainbow); *La Cenerentola* (MB Opera). Stage Manager: *Shrek Jr: The Musical* (MTYP); *Belt Fest 2* (Belt Fest/UNIT Productions); *Othello* (Beau/Raven/Echo); *Agency* (Sarasvati); *Stephen Hopwood Is Not Dead* (Penguin Production); *True Blue* (Cagey Productions).

FILM Second Wardrobe Assistant: *Alter Boys* (Farpoint Films).

TRAINING Graduate of University of Winnipeg - Bachelor of Arts in Production and Stage Management in Theatre and Film Production; Creative Manitoba Mentorship with Kathryn Ball. Quantum Arts Film & TV Acting with Ray Strachan.

ET CETERA Thanks to my family, friends and mentors for their ongoing support. ●

Thank You!



Melissa Langdon in *The Three Musketeers*. PHOTO BY DYLAN HEWLETT

It's that time of the year again when the buzz of excitement fills the air. The anticipation is palpable as we gear up for another incredible season. Before we dive into all the exciting stories that lie ahead, we want to take a moment to express our heartfelt gratitude to our amazing donors who have kept us going over the summer.

We can't create extraordinary theatre without you.

On behalf of our entire team, we extend a big, resounding thank you to all our hard-working donors who generously support us.

Throughout the summer months, as we worked tirelessly behind the scenes to create a season that surpasses all expectations, it was your unwavering support that fuelled us. You reminded us of the profound impact theatre has on the lives of so many.

***"I'm so grateful to have seen this play
and have been thinking about it ever since."***

- Patron

As we embark on this extraordinary season, we dedicate it to you, our generous donors. Every performance, every smile, and every round of applause will be a testament to your steadfast support.

Join our extraordinary group of donors by making a donation through mail, phone or at royalmtc.ca/donate. For more information, contact Brendan M^cKeen, Individual Giving Manager, at 204 954 6412 or bmckeen@royalmtc.ca.

From the bottom of our hearts, thank you. We are truly thrilled to have you here! ●

**SCAN HERE
TO DONATE
TODAY!**



Lottery, Sports and Casino

All your favourite games
are at PlayNow.com.



**PLAY
NOW**
Bet on Manitoba



Matthew MacKenzie and Mariya Khomutova in *First Métis Man of Odesa*. PHOTO BY ALEXIS MCKEOWN

Director's Notes

BY LIANNA MAKUCH

This is a love story. And like any grand, sweeping love story, our lovers are faced with grand, sweeping obstacles that challenge their fate. They are faced with modern challenges like Facebook messaging over great distances throughout a pandemic. And like the many great love stories that came before them, Matt and Masha's story is also set against the backdrop of war.

I have been witness to Matt and Masha's love story from the beginning. It is only fitting that these two theatrical romantics would fatefully meet through the theatre. It was at a workshop of my play *Barvinok* in Kyiv that Matt and Masha first met, and a second workshop that brought Matt back to Ukraine prior to the pandemic. At the time, I had no idea that being a third wheel would grant me a unique perspective as their future director. I also had no idea exactly how quickly and significantly our worlds would change in so many ways.

When Russia's full-scale invasion of Ukraine began on February 24, 2022, it was impossible to turn away. For so many

people part of the Ukrainian diaspora, the war was and continues to be omnipresent. Mundane, routine tasks are weighted. News about it is inescapable. The cognitive dissonance of scrolling through Instagram dog memes followed by images of horrific Russian war crimes has been a reality for the last year and a half. To be part of the Ukrainian diaspora is to contend with your head and heart breaking for your loved ones in Ukraine, and striving to not fully dissociate from your safe, physical reality in North America.

This is also a love story about Ukraine. I want audiences to fall in love with all that Ukraine is, undefined by Russia's atrocities. Just as Matt and Masha's love blossomed on the cobblestone streets of Kyiv, or the ultra-romantic promenades outside the iconic Odesa Opera House, there is so much about Ukraine to fall in love with. Like any grand, sweeping love story, this one shows us that not even the greatest obstacles, like the most evil forces of war, can taint true love. Matt and Masha's son, Ivan, is a reminder of this unbreakable spirit. Ivan is a beautiful union of two cultures whose love has created a symbol of the kind of future we are fighting for.

Слава Україні. Все буде Україна. ●

FIRST MÉTIS MAN OF ODESA



Matthew MacKenzie and Mariya Khomutova
on their wedding day. PHOTOS BY NASTYA GOOZ

SYNOPSIS - While conducting interviews with theatre colleagues in the Donbas region of Ukraine in 2018, Métis playwright Matt falls head over heels for Masha, the Ukrainian actor in his workshop. After Matt returns home, he is desperate to reveal his feelings, and when he finally does Masha admits she too is smitten. With a brief trip to Toronto and a return trip to Ukraine their long-distance love affair is suddenly threatened, as international borders close due to COVID-19. And even more surprising, suddenly there is a baby on the way. Through a series of virtual family introductions, separated ultrasound appointments, and extensive travel operations, the couple spring into action creating a plan to wed in Ukraine before returning to Canada. But when the Russians invade Ukraine, their peaceful life as newlyweds is put to the ultimate test that neither are sure they can survive. A roller coaster ride of love, laughter and resilience in the most desperate of times. ●



MMF Supports Ukrainian Refugees

The Manitoba Métis Federation (MMF) understands very well what it means to fight desperately to defend democracy and independence. The Red River Métis have always done our part to protect fundamental rights, as we did in past global conflicts, like World War I and World War II.

The Red River Métis have been doing what we can to support our Ukrainian friends and help those who have had to flee their homes. In February 2022, the MMF Cabinet passed a unanimous vote to make a \$100,000 donation to Ukraine, for humanitarian aid in the face of Russian President Vladimir Putin's aggression.

The MMF proudly flies the Ukrainian flag at our buildings as a way of extending hope to our Ukrainian relatives. We have also created digital billboards that display messages of solidarity.

In June 2023, the MMF signed a memorandum of understanding with the Ukrainian Canadian Congress of Manitoba, outlining our commitment towards working together to support training and employment for 25 Ukrainian refugees at various MMF childcare centres. Since signing the agreement, the MMF, in partnership with the Government of Manitoba, announced \$1 million in funding for the education and employment of Ukrainian newcomers to work in our childcare centres, with hopes of providing stable, well-paid careers.

The National Government of the Red River Métis does not stand idly by during these trying times. Sharing what we have with our community is an important part of who we are as a people. We ask all citizens to continue looking after loved ones, neighbours and vulnerable community members. Simple acts of service can make a significant difference in the lives of the people around us.

We stand proudly with Ukraine and extend our greatest sympathies to those impacted by war. We will continue to do what we can to support Ukrainian refugees as they work to rebuild their lives. ●



THE
Free Press

**PROUD
SUPPORTER**
OF OUR **COMMUNITIES**

To subscribe call
204-697-7001
or visit
[winnipegfreepress.com/
subscribe](http://winnipegfreepress.com/subscribe)

PRESENTS

A PUNCTUATE! THEATRE PRODUCTION

First Métis Man of Odesa

Written and Performed by
 Matthew MacKenzie and Mariya Khomutova

November 2 – 18, 2023

PREVIEW November 1

DirectorLianna Makuch*
 Production Designer Daniela Masellis
 Projection Designer Amelia Scott
 Composer.....Daraba
 Sound Designer Aaron Macri
 Choreographer..... Krista Lin
 Dramaturg Matt McGeachy
 Stage Manager..... Lore Green*
 Production Manager & Technical Director Trent Crosby
 Associate Designer.....Cameron Fraser
 Design Consultation & Scenic Artwork Dawn Marie Marchand
 Beadwork.....Krista Leddy & Maria Nelson
 Producer.....Sheiny Satanove
 Associate Producer.....Alyson Dacey
 Head Scenic Painter.....Emily Randall
 Painters.....Ashley Hiibner & Amy Powell
 Drape Stitching.....Theatre Garage
 Fabrication.....art lab

First Métis Man of Odesa is performed without an intermission.

Production photography by Alexis McKeown.

**SCAN TO DONATE IN
 SUPPORT OF UKRAINE**



*The participation of these Artists are arranged by permission of Canadian Actors' Equity Association under the provisions of the Dance • Opera • Theatre Policy (DOT).

FIRST MÉTIS MAN OF ODESA



Mariya Khomutova
Performer & Writer

Mariya Khomutova started her theatre studies in Odesa at the age of 12. She graduated from the Kyiv National Theatre University in 2012 and worked in two repertoire theatres in Kyiv. Some of the favourite roles she has played are Agafya Tikhonovna (*The Marriage* by N. Gogol), Grushenka (*The Karamasov Brothers* by F. Dostoyevsky), Dunyasha (*Cherry Orchard* by A. Chekhov), Irodiada (*Salome* by O. Wilde). In 2020, Mariya was the recipient of a Golden Duke Award from the Odesa Film Festival for Best Actress in *Two of Us* (dir. Vladislav Vitriv).



Matthew MacKenzie
Performer & Writer

Matthew MacKenzie is a citizen of the Métis Nation of Alberta and proud father of Ivan (Eevan, Vanya, Vanichka). Artistic Director of Punctuate! Theatre, Matthew is also the founder and an Artistic Associate with Pyretic Productions, a founding member of the Pemmican Collective, as well as Canadian Liaison of the Liberian Dance Troupe. Matt's plays include *Bears*, *After the Fire* and *The Particulars*.



punctuate! Theatre

Punctuate! Theatre is a Toronto Dora and Edmonton Sterling Award winning theatre company based in Edmonton. Led by Artistic Director Matthew MacKenzie, our company endeavors to create accessible, relevant and subversive theatre that entertains and provokes thought amongst diverse audiences. punctuatetheatre.com

PLAYWRIGHT THANK YOU'S

Olga Chorna, Beth and Ian MacKenzie, Mila Kozlov, Simon Bracken, Guillermo Verdecchia, Nastia Ziurkalova, Keith Barker, Nicolas Billon, Rosa Labordé, Kaitlyn Riordan, Charlotte Corbeil Coleman, Michael Shamata, Jo Ann Saddleback, Jerry Saddleback, Christine Sokaymoh Frederick, Sheldon Elter, Daryl Cloran, Sarah Pocklington, Luke Reese, Weyni Mengesha.

PUNCTUATE! THANK YOU'S

Aaron Harrity, desirée leverenz, Erin Voaklander, Edmonton Fringe Theatre Adventures, Gabriel and Olenka Baron, Julien Arnold, Kiidra Duhault, Megan Dart, Mile Zero Dance Society, Nestor Makuch, Patrick Lundeen, Punctuate! Theatre Board of Directors, Pyretic Productions, Sonia Maryn, Tessa Stamp, The Tesserae Creative Construction + Design Inc, Tim Mikula, Tynan Boyd, Soulpepper Theatre.

A VERY SPECIAL THANK YOU TO OUR FUNDERS

Alberta Foundation for the Arts, Alberta Government, Canada Council for the Arts, City of Edmonton, Edmonton Arts Council, Edmonton Community Foundation, Ukrainian Pioneers Association of Alberta, Shevchenko Foundation, Ukrainian Canadian Veterans Fund and Cecil Semchyshyn Theatre Fund.

THANK YOU TO OUR NATIONAL PRESENTING PARTNERS

Western Canada Theatre (Kamloops, BC), The Theatre Centre (Toronto, ON), Citadel Theatre (Edmonton, AB), The Culch (Vancouver, BC), Persephone Theatre (Saskatoon, SK), Royal Manitoba Theatre Centre (Winnipeg, MB), Talk is Free Theatre (Barrie, ON).

FIRST MÉTIS MAN OF ODESA



Lianna Makuch

Director

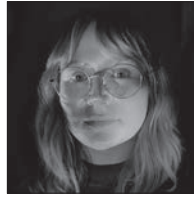
Lianna Makuch is a Ukrainian Canadian playwright, director, performer, co-Artistic Producer of Pyretic Productions, and a producer with Punctuate! Theatre. She has travelled several times to Ukraine to research and develop her plays *Barvinok* and *Alina*, which have garnered awards and recognition including the Shevchenko Foundation's 2020 REACH Award, a 2022 Edmonton Artist Trust Fund Award, and was shortlisted for the 2022 Alberta Playwriting Award. Lianna was recently Assistant Director on *Jane Eyre* and *A Christmas Carol* for the Citadel Theatre, and won the Dora Award for Outstanding Direction for her work on *First Métis Man of Odesa* this past theatre season. Thank you to Patrick for his ongoing love and support. #StandWithUkraine



Daniela Masellis

Production Designer

Daniela Masellis is a theatre designer and artist based in amiskwacîwâskahikan (Edmonton, Alberta), Treaty 6 territory. Daniela's training includes a B.F.A. of Theatre Design from the University of Alberta, a Diploma of Fine Arts, and a design apprenticeship in Italy at 'Teatro alla Scala Milano'. She has collaborated on over 85 professional productions across Canada. Her credits include work with The Stratford Festival, The Citadel, The Arts Club, Soupepper, Workshop West, Mile Zero Dance, Western Canadian Theatre, The Belfry Theatre and many others. She is a full member of the Associated Designers of Canada and IATSE 659.



Amelia Scott

Projection Designer

Amelia Scott is a video designer, projection technologist and new media artist. Her focus is in visual storytelling, using animation, film, video, and live cameras to implement nuanced integration of video and projections into live performances. Amelia is also an instructor of Video Technology and Design at the National Theatre School of Canada. Notable collaborations include: National Arts Centre of Canada, Vancouver Symphony Orchestra, Munich Kammeroper, The Barbican Centre, LA Philharmonic, New Zealand Opera, Festival Trans Amériques, Porte Parole, Crow's Theatre, Espace Go, Théâtre aux Écuries, Théâtre Denise-Pelletier, Alberta Theatre Projects, The Banff Centre.



Daraba

Composer

Daraba is a creative audiovisual formation (based in Kyiv, Ukraine). It was founded in 2020 by composer Andrii Merkhel and designer Yaroslav Zen. Composers and sound designers Tetiana Khoroshun and Serhii Vilka became part of the sound studio for cultural solutions. Over the years, the team has presented a number of projects in collaboration with leading productions, institutions, and theatres in Ukraine and other European countries. Their focus is on performance, creative solutions for films, computer games, installations, and exhibitions. Each of the members that make up Daraba have many years of experience in musical, performing, and visual arts.

For a complete list of theatre abbreviations, please refer to legend on page 4

FIRST MÉTIS MAN OF ODESA



Aaron Macri
Sound Designer

Aaron Macri is an award-winning composer and sound designer based out of Edmonton, Alberta. Over his more than 20-year career he has created music and sound design for theatre, television, dance and film. His works have been broadcast nationally and Off Broadway.



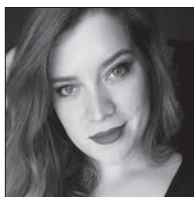
Krista Lin
Choreographer

Krista Lin is a contemporary artist based in amiskwacîwâskahikan (colonially Edmonton). A graduate of The School of Toronto Dance Theatre, Krista has studied with renowned instructors in Israel, Taiwan and across Canada. Krista has performed in works by Heidi Strauss, Justine Chambers, Good Women Dance, Matthew MacKenzie, Gerry Morita and Susie Burpee. Krista teaches dance in public and private institutions, and has taught outreach workshops in Ontario, Alberta and Taiwan. With a diploma in Arts and Cultural Management from MacEwan University, Krista is a part-time arts manager and arts advocate. She is a mom to Andy, Lily and dog-child Louie.



Matt McGeachy
Dramaturg

Matt McGeachy is a Toronto-based dramaturg. He spent 10 seasons with Factory Theatre leading the revitalization of that company's new work development program, and has also worked with the Guthrie Theatre, the Kennedy Center, Theatre Passe Muraille, Canadian Stage Company, and Ronnie Burkett Theatre of Marionettes, among others. Matt is an alumnus of the Toronto Arts Council/Banff Centre Leaders Lab, is the president of LMDA Canada, and currently works as head of government relations at the Toronto Symphony Orchestra. Upcoming: World premiere of *Vierge* by Rachel Mutombo and world premiere of *Armadillos* by Colleen Wagner.



Lore Green
Stage Manager

Lore is thrilled to be working with Punctuate! Theatre on this beautiful show! Selected credits include: *A Christmas Carol*, *West Side Story*, *Curious Incident of the Dog in the Night-Time*, *Sense & Sensibility*, *Hadestown*, *Silver Arrow*, *Peter Pan Goes Wrong*, *Clue* and *Jersey Boys* (Citadel Theatre); *Timothy Findley's The Wars*, *Mamma Mia!* and *Titanic: The Musical* (Grand Theatre); *Barvinok*, *Michael Mysterious* and *Alina* (Pyretic Productions). Lore is the resident stage manager for Pyretic Productions and holds a BFA in stage management from the University of Alberta. Slava Ukraini!

For a complete list of theatre abbreviations, please refer to legend on page 4

FIRST MÉTIS MAN OF ODESA



Trent Crosby
*Production Manager
& Technical Director*

Trent is an Edmonton-based artist and arts enabler with a specialty in activating non-traditional performance spaces. A graduate of Grant MacEwan's Theatre Production program and The Banff Centre for the Arts, Trent has spent the last 13 years as a Lighting Designer, Production Manager, Technical Director and Entertainment Programmer.



Cameron Fraser
Associate Designer

Cameron Fraser is a multidisciplinary artist with an extensive background in performing and visual arts, spanning over two decades. He has contributed projections, sets, props, or assisted designers for such companies as The Shaw Festival/Why Not Theatre, Vancouver Opera, The Grand Theatre, Alberta Theatre Projects, Vancouver Asian Canadian Theatre, The Confederation Centre for the Arts, Kentucky Opera, Theatre Calgary, Vertigo Theatre/The Arts Club, Talk is Free Theatre, and more, as well as for a variety of corporate clients. He is a Guinness World Record Holder and a proud member of the Associated Designers of Canada.



Dawn Marie Marchand
*Design Consultation
& Scenic Artwork*

Dawn Marie Marchand is a member of Cold Lake First Nation in Treaty 6 territory. cîpêhcakwawêw-iskwêw (Blue Horse Spirit Woman) is a Cree and Métis artist, educator, advocate, author, writer, speaker and mother. She received an Aboriginal Role Model Award for Art in 2017, during her term as the inaugural Indigenous Artist In Residence for the City of Edmonton. Facilitation of the Indigenous Artist Market Collective engagement and launch in 2018. An installation called "The Longest Journey" as part of the Nuit Blanche Festival in 2018. Since then she has created public art in the Stanley Milner Public Library and had artwork projected in Expo Dubai in 2020. Her Treaty 6 oral history recognition artwork, 10 Sticks, was projected with the Juno 2023 Land Acknowledgement in Edmonton.



Krista Leddy
Beadwork

Krista Leddy is a proud Métis woman whose family comes from the historical Métis communities of St. Albert and Lac St. Anne. She currently calls amisk-waciywâskahikan (Edmonton) home. Her beadwork is influenced by the beautiful teachings, stories and patterns of her Métis ancestors and brings the spirit of her grandmothers into all of her pieces, whether they are traditional or contemporary in nature. Krista also works to reconnect Métis people back to the community through traditional arts including beading, weaving, sewing, storytelling and dance. @beadedchickadee

For a complete list of theatre abbreviations, please refer to legend on page 4

FIRST MÉTIS MAN OF ODESA



Maria Nelson

Beadwork

Maria Nelson is a Métis-Ukrainian woman from Redwater, Alberta. Beading is a way of building and maintaining the connection between my heritage, my past, and my identity moving forward. My favourite part of beading is exploring how colours and patterns can play off each other. I began working on reconnecting with my community and heritage around the same time I began beading. My family connections are primarily from Saskatchewan and Red River, and it was my great-grandmother's generations that we entered Alberta. I am a Lavallee, Piche, Arcand, Poitras, Anderson and many more. It has been an educating and rewarding experience to be able to rebuild my connections to my past and heritage while also being able to build new connection in my present.



Sheiny Satanove

Producer

Sheiny Satanove (she/her) is a Vancouver-born theatre and film producer who has lived in Treaty 6 amiskwaciwâskahikan for over 10 years. She is a proud founding member of Punctuate! Theatre and currently serves as Managing Director. Sheiny has produced over 20 plays, including several world premiere productions. She is also a freelance producer and coordinator in the film industry, and has worked on several feature films and television shows across the country. Sheiny is thrilled to be touring with the Punctuate! team this year, and to be sharing such an important story. Much love to J & E.



Alyson Dicey

Associate Producer

Alyson Dicey is an Edmonton-based artist and graduate of the BFA Acting class of 2012 at the University of Alberta. She is a founding member of Girl Brain Sketch Comedy and is proud to write and perform with a troupe that celebrates and promotes the strength of women. Alyson is an Artistic Associate with the Edmonton immersive theatre company Thou Art Here Theatre, and Volunteer Coordinator/Administrative Assistant for the multidisciplinary arts festival featuring women-identifying and non-binary artists, SkirtsAFire. During the summers, Alyson can be found at the Edmonton International Fringe Festival in her role as Kids Fringe Coordinator. ●



Matthew MacKenzie and Mariya Khomutova
in *First Métis Man of Odesa*. PHOTO BY ALEXIS MCKEOGH

For a complete list of theatre abbreviations, please refer to legend on page 4

EXPLORE MORE

First Métis Man of Odesa

EXPLORE MORE RECENT UKRAINIAN HISTORY

An Orange Revolution by Askold Krushnelnyckyd. In December 2004, thousands of Ukrainians gathered to defy the results of a transparently rigged presidential election. This account follows some of the people who forced a change: judges who defied death threats, a murdered journalist, amateur musicians who composed an anthem, and soldiers who backed the opposition. It also traces the story of the author's family, who paid a high price for speaking out. **947.7086 KRU 2006**

The Rooster House by Victoria Belim. In 2014, Belim's hometown of Kyiv was gripped by protests and violent suppression. She returned to Ukraine to unravel a family mystery spanning several generations and to understand how communist revolution, civil war, famine, world war, totalitarianism and fraught independence changed the course of their lives. **947.7084 BELIM 2023**

EXPLORE MORE CROSS-CULTURAL STORIES

A Grandmother Begins the Story by Michelle Porter. Five generations of Métis women argue, dance, struggle, laugh, love, and tell the stories that will sing their family, and perhaps the land itself, into healing. An extraordinary novel told by a chorus of vividly realized characters, including descendants of the bison that once freely roamed the land. **FICTION PORTER**

A Map Is Only One Story by ed. Nicole Chung & Mensah Demary. In this anthology of essays, 20 writers share their personal stories of migration, family, the search for home and belonging, and what it means to exist between languages and cultures. **304.8 MAP 2020**

Things Are Good Now by Djamila Ibrahim. A short story collection that explores the scars of violence and the weight of love and guilt on the soul. Women, men, and children who've crossed continents in search of a better life struggle with the chaos of displacement and the religious and cultural clashes they face in their new homelands. **FICTION IBRAHIM**

EXPLORE MORE METAFICTION

Never Swim Alone & This Is A Play by Daniel MacIvor. A hilarious metadrama, *This Is A Play* follows three actors who, while performing, reveal their own thoughts and motivations as they struggle through crazy stage directions and an unoriginal musical score. **819.254 MACI**

LIBRARIAN-RECOMMENDED RESOURCES

The Novelist by Jordan Castro. Over the course of a single morning, a young man fails to write an autobiographical novel about his heroin addiction and recovery, finding himself drawn into the infinite spaces of Twitter, quotidian rituals, and his own mind. This is a literary manifesto of optimism about deciding to live, even if the project of living includes a great deal of suffering.

FICTION CASTRO ●

There are 1.4 million books, movies, audiobooks, eBooks, and more at the Winnipeg Public Library, and all you need to borrow them is your library card. There are 20 locations throughout the city, and there's an online catalogue for requesting items for pick-up at your library of convenience. An online e-Library has thousands of eBooks, eAudiobooks and more! All free to use with your library card.

Visit us online at winnipeg.ca/library.



Your seat awaits.

Will you consider a gift to Royal MTC in your will?

Is Royal MTC already named in your will?

**We'd love to honour you as a member of
the Royal MTC Founders' Circle**

For more information on Legacy Giving contact:
Brendan McKeen 204 954 6412 or bmckeen@royalmtc.ca



Scan here for
more info



Jones & Company

— WINE MERCHANTS —



Shop Local, Globally.

1616 St.Mary's Road Winnipeg, Manitoba
204.948.WINE (9463) | text a somm: 204.400.0499
joneswines.com | wine@joneswines.com



WE TRIED

We really did. We tried to photograph a pint of our refreshing, award-winning beer but everytime we turned our heads, it was gone.

It's just that good.

You might have better luck. Pick some up in the lobby, your favourite beer store, Liquor Marts and in our very own taproom.

330-830 King Edward Street
torquebrewing.beer

SUPPORTERS

Many thanks to our donors
who made a gift between
Aug 1, 2022 and Sep 20, 2023

DIRECTOR'S CIRCLE

\$10,000+

Gail Asper, OC, OM, LLD* &
Michael Paterson
Deborah Gray
June & Bob Jackson Memorial Fund
for the Performing Arts - The
Winnipeg Foundation
Diane & Dave Johnston
Ken & Sharon Mould
The Jim & Janice Tennant
Foundation

\$6,500-9,999

David Christianson & Vera
Steinberger
Houston Family of Bradwardine
Fund - The Winnipeg Foundation
Ted & Ruth Northam
Mr. Leslie Taylor

\$4,000-6,499

Pauline Braun - in memory of Duane
Braun*
Susan Glass & Arni Thorsteinson
Rita Gunn[§] & Gregory Mason
Camilla Holland* & Colin Viebrock*
Elizabeth Marr & Nick Slonosky
Gerry & Barb Price
Hartley & Heather Richardson
Maitland & Pat Sundmark
Dr. Marcel Van Woensel
Denise Waldman

\$2,000-3,999

Dr. J Baluta & Ms. O. Kandia
David & Lianne Carefoot
David* & Barb Christie
Nancy Cipryk
Heather Clarke
Gerry* & Chris Couture
Kerry Dangerfield**
Ben & Shari Diamond
Dr. Lawrence & Ms. Brenda Ellerby
Tony* & Jennifer Fletcher*
Linda Hamilton & Grange Morrow*
Sharon Hamilton*
Hon. William Johnston
Dr. P. Kmet & Mr. B. Roslycky
Donna & Dave* Lalama
Brendan M[†]Keen**
Jim* & Penny McLandress*
Leigh Murphy - in memory of Liam
Murphy*

Dr. Harold Nyhof & Ms. Jo-Anne Lutz
Francis Pollard
Drs. Bill Pope & Elizabeth Tippett
Pope Fund - The Winnipeg
Foundation
Sanford & Deborah Riley
Bill & Laurie* Speers
Kelly Thornton* & Joseph
Seras-Gubert*
Jeremy Trickett & Brandon Barnes
Trickett*
Scott & Sonya Wright Fund
Anonymous

\$1,200-1,999

Edward* & Jaime Acuna*
Craig McIntosh & Lorraine Beck Fund
Todd Bourcier
Sheldon & Penny Bowles
Doneta Brotchie, CM* & Harry
Brotchie*
Chambers Family*
Hadera & Mark Chisick
Jan & Kevin Coates*
Hugh Conacher*
Corinne Ratuski & Brad Favel*
Sylvia Flam*
Katherine Fox**
Susan* & Ab Freig*
John* & Nicola Guttormson*
Barbara Hamilton
Gregg & Mary Hanson
Vivian Hilder-Skward & David Skward
- in memory of Mike Skward*
Shawn Hughes & Bruno Koehn*
Aileen Hunt & George Lamont
Katie Inverarity**
Mrs. Donna Korban & Family
Serena Helen Kraayeveld Fund -
The Winnipeg Foundation
David* & Ellen Kroft*
J. Lamothe*
Rick Lee & Laurie Shapiro
Katrina Lee-Kwen & Jeff Neufeld
Peter & Karen Leipsic
Andrea Lochhead*
Gail Loewen
Dr. Douglas MacEwan
Mark & Gloria Mancini*
Melissa Novocosky**
Wayne & Linda Paquin
K. Heather Power & Harold Klause*
Lawrence Prout* & Lisa Gardewine*
Margaret Redmond* & Greg Gillis*
Nancy & Loren* Remillard
Mrs. Shirley Richardson
Sudhir Sandhu**
Logan Family Fund
Ken & Susan* Skinner*
Kevin Hines & Shelly Smith-Hines*
Joan Stephens - in memory of
Annice Stephens*
Sasha & Josh Thiem*

Geeta* & Michael Tucker*
Murray & Nancy Wiegand
Rick & Claire* Workman
Nicole Zajac*
2 Anonymous

COMPANY CIRCLE

\$600-1,999

Robert & Ina Abra Family Fund -
The Winnipeg Foundation
Margaret Astwood
Peter Attwood
Ryan Bernier
Bruce & Shelley Bertrand-Meadows
Cathie & Brian Bowerman
Pam & Andrew Cooke
Matthew Cutler & Dr. Avery Miller
Verna Danylchuk
J. Davidson*
Emeric & Karen Duha
Helene Dyck
Marilyn & Helios Hernandez
N & L Holliday
The Honourable Guy J. Kroft &
Hester Kroft*
Ian & Nicki LeGrand*
Tim Preston & Dave Ling
Teresa Lopata & Bruce Wagg
Brian & Christie Lysack*
Peter & Maureen Macdonald
Garry Markham
Gerard Matte & Lydia Surasky Matte
Carol & Barry[§] McArton
Campbell & Lorraine McIntyre
Terri & Jim Mc Kerchar*
Ron McKinnon & Peggy Barker*
Carolyn Garlich & Peter Miller Gift
Fund
Vivienne Nickerson
Tracey Novak
Richard & Bonnie Olfert
Ivan & Cathy Oresnik*
Cameron & Carole Osler
Donna Plant
Lousie & Ruth
Iris Reimer
David & Joan Rew
Henriette Ricou & Jure Manfreda
Tony Robbins
Carol & Ron Slater Fund - Jewish
Foundation of Manitoba
Deborah Spracklin
Karen Stach
Lorne Sunley
Dr. Peter Triggs*
Vicki Verville*
Rachel Waenink
Kathy Gough & Tim Wildman
Margaret Wollner*
2 Anonymous

*Current Royal MTC Board of Trustees/Advisory Board members †Current Royal MTC staff **Monthly Donors/Drama Club †Fondly Remembered

SUPPORTERS

\$250-599

Pat & Darrell Adams*
 Dr. Liz Adkins
 Glen Agar & Pam Reimer
 Pat & Nazir Ahmad
 Dawn Andersen
 Jay & Judy Anderson
 Elizabeth B. Armytage Fund -
 The Winnipeg Foundation
 Lynne M Arnason
 Dennis & Elaine Schultz
 Brenna Bacchus*
 Peter Bagot
 Glenn & Norma Baldwin
 Kathrine Basarab
 Larry Beeston & Anna Sikora
 Susan & Edwin Bethune
 Helga & Gerhard Bock
 Lilian Bonin & Daniel P Levin
 John & Marilyn Bourbonnais
 Dr. Elizabeth Boustcha
 The Hon. Patricia Bovey
 Ron & Joan Boyd*
 M. Braid
 Billy Brodovsky & Libby Yager*
 Sheila & David Brodovsky
 Brian Brown
 Ellen & George Bruce
 Donna Byrne
 Ron Maier & Colleen Cariou
 Rosemary Chapman
 Lawrie & Bea Cherniack
 Roberta Christianson
 Nancy Chuback
 Kenneth Clark & Pamela Lockman
 Agnes & John K. Collins
 Jim & Gwen Court
 Robert Coutts*
 D. J. Cowan
 Ashleigh Czynryj
 J. V. Dale
 Werner & Judy Danchura
 Doug De Graff
 Andre & Diane de Rocquigny
 Rita Dornn
 Craig & Claudette Dunn
 June Dutka
 H. Dyck
 Pamela Dykstra
 Glen* & Joan Dyrda
 Robert & Florence Eastwood
 John Edwards & Wendy Stelco
 Ruth & Ernest Epp
 Fran Falzarano
 Kate Hodgert-Fennell*
 Doug & Pat Finkbeiner
 Andrea Forbes-Avila*
 Elroy Friesen
 Felicia & Trevor Frost
 Colleen & Dan Furlan*
 Daniel Gagnon
 Lynne & Lindsay Gauld*

Denise & Ron George
 Brad Gesell
 Heather Gillander
 Serky & Ben Goldberg
 Jan Gordon*
 Kayla Gordon & Art Maister
 Blair & Amanda Graham
 M. Gray
 Noella & Patrick* Hanan*
 Doug & Sylvia Hannah
 Brian & Dawn Hanson - in memory of
 our Daughter, Kristin Dawn Hanson
 Don Hardy
 Linda Harlos & Adrian Wildsmith
 Kathryn & Wayne Harrison
 Frank & Sue Hechter*
 Rodney Hick & Tracey Jackson
 Judith & Eric Hinton
 Ted & Cathy Hlynsky
 Lenore & John Hodge
 Jennie Hogan
 Michael & Crystal Hollas*
 Ken Houssin*
 Lorne Hurst & Elly Hoogterp
 Dan & Karen Ilchyna
 Sylvia Jansen
 Gerald Jewers
 Danielle Jobb & Brendan Roddy
 Katherine Clements & James Tam
 Sheryl Kapitz & Aaron London*
 Peter Kingsley, KC
 Betty Klassen
 Julie Ann Kniskern
 Denise & David Koss
 Randie & Jan Kushnier
 Laurie Lam & Larry Desrochers
 Cheryl Langer
 Barbara Latocki
 Desiree Lavallee**
 John & Heather Lea
 E. Kerrie Halprin & Richard Leipsic
 John & Roberta Lewis
 Pat & Jim Ludwig
 Tom Lussier
 Dr. Ted & Harriet Lyons
 MacDonald/Cageorge Fund - The
 Winnipeg Foundation
 Jim MacGregor & Christine Halma
 Judith Manning
 John & Helen Marakovits
 Liz Martin*
 Jim & Lynne McClelland
 Greg & Gloria McLaren
 John & Carolynne McLure Fund
 - The Winnipeg Foundation
 Donald G. McNabb
 Albert & Judith Metcalfe*
 Susie Miclash
 Irene Miller & the late Claire Miller
 Catherine Lambeth & Grant Mitchell
 Dr. Catherine Moltzan & Paul Brault
 Vera Moroz

Sagan Morrow*
 Cathy Moser & Jeff Itzkow
 Suzanne & Kenneth Munroe
 Charlotte Murrell
 Brad Nance
 Marika Nerbas
 Joanne Olchowecki
 Norma Anne Padilla
 Jean-Pierre Parenty & Michelle Smith
 Sandra Paterson-Greene & Russ
 Greene
 Maryam & Izzy Peltz Fund - Jewish
 Foundation of Manitoba
 Bonnie Penno*
 Linda & Rob Pettit
 Rick Pinchin
 Jocelyn Pitsch
 Ian & Ann-Margret Plummer
 Leonard & Ruth Podheiser & The
 Podheiser Family Foundation
 Beth Pollard
 Maureen Prendiville & Paul Jensen
 Jeremy Rampton
 Carole Rankin*
 Cheryl Reid
 Lorraine & Ernest Reinfort
 Joan Richardson
 Laura Richman
 Jean Riggall*
 Andrea & Michael Robertson*
 Deborah & Neil Rostkowski
 Debbie Roy
 Emile Samuels
 Cathy & Paul Samyn
 Onnolee Scharf*
 Roland Schneider
 Renate & Bill Schulz
 Harald & Vicki Schulz
 Faye Scott
 Darcia & Gary Senft
 Jewish Foundation of Manitoba - in
 memory of Sybil Shack for the
 benefit of MTC
 Marsha Sheppard
 Blake Shiro
 Shayna & Merrill Shulman
 Dr. Elinor Simons
 Ms. Judy Nichol & Dr. Jim Skinner
 Lynne Skromeda
 Al* & Virginia Snyder
 Steve Stephanson & Tracy Nesbitt
 Eleanor Suderman
 Mary Ann Supleve
 Ray & Fenella Temmerman
 Leah R. Janzen & Ian R. Thomson
 Malcolm & Shirley Tinsley
 Jen & Kevin Tomanek
 Gord & Lorena Trann
 B. Baydock & W. Tretiak
 Grant Tweed
 Strang/van Ineveld Family
 Dr. & Mrs. M. B. Vodrey

*Current Royal MTC Board of Trustees/Advisory Board members

**Current Royal MTC staff

*Monthly Donors/Drama Club

SUPPORTERS

Stirling Walkes
 Tamara & John Wells
 Norma & Ron Westcott
 John T. & Justina Wiens
 Lionel & Lorraine Wiens
 Catherine Wilkie
 Leslie Wilson
 Reed & Arla Winstone
 Deborah A. Wolfe
 Adele & Arthur Wortzman
 Margaret & Paul Wright
 Allana & Eden Wyness*
 A Young
 Dr. Dorothy Y. Young
 Olga & Roman Zubach
 13 Anonymous

\$150-249

Robert & Patricia Adamson
 Jay & Judy Anderson
 Jennifer & Scott Ash
 Nadine Audet*
 Ian Backus
 Zaz Bajon & Patricia Hunter
 Richard & Nancy Ball
 Dr. Corinne Barrett DeWiele
 Mary Barwinsky
 Karen & John Bate
 Dr. Catherine Baxter & Mr. Mark Conrad
 James & Dawn-Lynne Bedford
 Susan & George Benias
 Trust Beta
 Joan Blight
 David & Pamela Bolton
 Sandra Brabant
 Gerald R. Brown
 Carol Budnick
 Linda Bulka
 John Burrows
 Arlene Carr
 Jody Chalmers & Monique Perro*
 Doug & Monica Chapman
 Norma & Victor Chernick
 Shelley Chochinov
 Katherine Cobor
 David & Kathy Connor
 Sarah Corley
 R. Lynn Craton
 Georges Damphousse
 Linda Daniels
 Chris Darazi*
 Sheila Domke & Stephen Ross
 Rob Dryden
 John & Ada Ducas
 Heather Goulden & Jay Duncan
 Carol Dutton
 Roberta Dyck
 Tim Edginton & Joan Hardy
 Greg Edmond & Irene Groot-Koerkamp
 John & Marilyn Ekins

Charlotte Enns & Greg Evans
 Ken & Lesley Enns
 Anthony Esposito
 Jemara Fay*
 Marion Fellingner
 Linda Ferguson
 Nelma Fetterman
 Gayle Fischer
 Bev Fitzpatrick
 Maureen Flaherty
 Lawrence Foster*
 Christine M Freeman
 Gloria & Rick Gallant
 William S. Gardner
 Helen Garrod
 Jane Park & Blair Geisel
 Patti & Rick Gilhuly
 Barbara & David Goldenberg
 John & Marcia Gordon
 Jennifer Graham
 Linda Graham
 Harry & Cheryl Green
 Abigail Grieder
 Hans & Sandra Hasenack
 Shellie & Grant Hatch*
 Elizabeth Hatherell
 Kyle Hendin
 Judy Heppelle
 Mary & David Hickling
 Rob & Jen Hochkiewicz*
 Mary Hodge
 Ramona Hodges
 Tom & Dianne Hodgson
 Keith & Karen Horn
 Colleen Hrabii**
 Jean Hyrich
 G. C. Irwin-Kilfoyle
 Chuck Isaak
 Stu & Alice Iverson
 Dave & Lesia Johns
 Tannis & Owen Johnston
 Michael Joyal, esq.*
 Joanne & Rod Kamins
 J.H. Kaminsky
 Sherry Kaniuga*
 Sandy & Joan Kellett
 Penny & Brian Kelly
 Vernon & Roselin Klassen
 Ms. Julie Koehn
 Lesley Koven & Eric Thomas
 Lorraine Kraichy*
 Teena Laird
 Dale Lakevold
 Lisa & Ted Landrum
 Ms. Cynthia Lau
 Bryen Lebar & Patricia Sauder*
 Ellen & Stewart Leibl
 Saul & Kathy Leibl
 Tim & Kate Letkemann*
 Wendell Lind
 Judy & Eric Lister
 John & Joy Loewen

Sarah Luby
 Carole Lupkowski
 Wally MacMartin
 Dale & Gina Marciski
 Elaine & Neil Margolis
 Ilse Marotta
 Lynne Martin* - in memory of Omar Martin
 Agatha Massey
 Cheryl & Eric Matheson
 Barbara McCandless
 Marlene & Ian McKay
 Barry McNabb
 Catarina Mello Schultz*
 Barb Melnychuk
 Loretta Merriam
 Jim & Karren Middag
 Gail Mildren - in memory of Walter A. Mildren
 Celoris Miller
 Cressida Mills
 Adriana Mingo
 Dr. & Mrs. M. Mollot
 Marc Monnin & Donna Miller
 Tom & Susan Mooney
 Allison Moore*
 Marlene Mortimer
 B. Nagamori
 Rhea Nelken
 Leslie Nichol
 Tom Nowicki
 Irene Onuch
 Cynthia Orris
 Doris Mae Oulton & Cam Mackie*
 Francie Palmer
 Linda Pashniuk
 Sonjia Pasiechnik
 Myron Pawlowsky & Susan Boulter
 Jo-Anne & Harvey Peltz
 Donald & Elaine Peters
 Carolyn Porhownik
 Nancy & Brett Porth
 Jocelyne Prefontaine
 Sheila Rabb
 Roberta & Rick Rackal
 John & Marilyn Rae
 Dr. R. & Audrey Ramchandarr
 Jim & Kathy Ranick*
 J. Rapai
 Linda Ratynski
 Lucas Redekop
 Dr. Martin Reed & Joy Cooper
 Pat & Bill Reid
 Art Reimber
 Joy Reimer
 Cindy Rodych
 Jay Ross
 Pat & Michelle Rowan
 Michael T. Ruta
 David & Tammie Sainsbury
 Denyse & Ken Saloranta
 Rodrigo Sanches Cunha*

*Current Royal MTC Board of Trustees/Advisory Board members †Current Royal MTC staff *Monthly Donors/Drama Club †Fondly Remembered

SUPPORTERS

Heather Sandilands*
 Greg Sexsmith & Joni Lavender
 Sexsmith*
 Sydney Shore & Wayne Sharpe
 Tania Sigurdson
 Edith Simpson
 Linda Simpson
 Earl Slimmon
 David Smith
 Donald Smith*
 Jon Sorokowski
 Maria Steeds
 Darlene Stepanik
 Kim Stephens
 Lisa Stiver
 Heidi Struck*
 Shirley & Tom Strutt
 Shelley & Jeff Tallin
 Greg Tottle
 Marilyn Trepel
 Mona Turcotte
 Eric Turner*
 Chris Turyk & Bryce Weedmark*
 Helmut & Gwen Waedt
 Dorothy Walker
 J. & A. Walli
 Jane & Don Walters*
 Paul & Laura Walton*
 Robert & Sherilyn Ward
 Peter & Joan Washchysyn
 Lois & Henry Wedel
 Hymie & Shaaron Weinstein
 Mary Agnes Welch*
 Alys-Lynne & Steve West
 Al & Pat Wherrett*
 Florence & Donald Whitmore
 Theresa Wiktorski
 Dennis & Gustine Wilton
 Robyn Wolfe
 James Wood*
 22 Anonymous

SPONSORS

300 Main
 Air Canada
 The Asper Family Foundation
 The Gail Asper Family Foundation
 The Asper Foundation
 Bell MTS
 Birchwood Lexus
 BMO Financial Group
 Bonaventure Travel Inc.
 Canada Life
 Collective Event Rentals
 Culligan Water
 Dycom Direct Mail Services
 Esdale Printing Co. Ltd.
 Fairmont Winnipeg
 Fillmore Riley LLP
 Friesens Corporation

HUB International
 IG Wealth Management
 Jones & Co Wine Merchants
 Lawton Partners
 Soirée Event Planning
 Manitoba Bar Association
 Liquor Mart
 Manitoba Public Insurance
 McDiarmid Flowers
 McNally Robinson Booksellers
 POS Systems
 RBC Foundation
 RE/MAX
 Red River Co-operative Ltd.
 Relish New Brand Experience
 Sleeman Breweries Ltd.
 Stantec Consulting Ltd.
 Tanchak Wealth Management Group
 Taylor McCaffrey LLP
 TD Bank Group
 The Thomas Sill Foundation
 Torque Brewing
 University of Manitoba - Faculty
 of Law
 Wawanesa Insurance
 Winnipeg Free Press

CORPORATE DIRECTOR'S CIRCLE

\$25,000+

Johnston Group Inc.
 Richardson Foundation

\$1,200-2,999

Arthur J. Gallagher Insurance and
 Risk Management
 Cambrian Credit Union
 Domo Gasoline Corporation Ltd. -
 Kate M. Everett, President
 IATSE Local 856
 Maple Leaf Construction Ltd., Blake
 Fitzpatrick
 Maxim Truck & Trailer - Doug
 Harvey & Jan Shute
 MMP Architects
 Pollard Banknote Limited
 PRA Inc.

CORPORATE COMPANY CIRCLE

\$600-1,199

Astroid Management Ltd.
 Mid West Packaging Limited
 Premier Printing Ltd.

\$300-599

MCW/AGE Consulting Professional
 Engineers
 Winnipeg Building & Decorating Ltd.

\$150-299

Beyond Referrals
 InterGroup Consultants Ltd.
 Patill/St. James Insurance

FOUNDERS' CIRCLE

Wayne & Lee Anderson
 Gail Asper, OC, OM, LLD*
 Zdzislaw (Zaz) Bajon & Patricia Hunter
 Marjorie & Morley* Blankstein
 Duane* & Pauline Braun
 Doneta Brochic, CM* &
 Harry Brochic
 Ken* & Denise Brown
 David & Lianne Carefoot
 Len & Heather Cariou
 Terri Cherniack & Steven Schipper,
 CM, OM
 Jennifer Cheslock & George Buri
 David Christianson & Vera
 Steinberger
 David* & Barb Christie
 Gerry* & Chris Couture
 D. J. Cowan
 Hugh B. Cowan
 Kerry Dangerfield*
 Laurie Lam & Larry Desrochers
 Glen* & Joan Dyrda
 Robert & Florence Eastwood
 Don & Elfie Elias
 Bill* & Gayle Fischer
 Anthony* & Jennifer Fletcher
 Jack Fraser
 James Gibbs*
 Sandy & Rheal Gousseau
 Rita Gunn & Gregory Mason
 John* & Nicola Guttormson
 Ahava Halpern & Frank Lavitt
 Linda Hamilton & Grange Morrow
 Gary Hannaford* & Cathy Rushton
 Ted* & Gail Hechter
 Elaine Heinicke*
 Shawn Hughes & Bruno Koehn
 June* & Bob Jackson Fund for the
 Performing Arts

*Current Royal MTC Board of Trustees/Advisory Board members *Current Royal MTC staff *Monthly Donors/Drama Club *Fondly Remembered
 If you have remembered Royal MTC in your will, please let us know.

SUPPORTERS

Maureen E. Jay
 Andrew & Wendy Jensen
 David & Diane Johnston
 Dr. Leonard & Hope^s Kahane
 Janis Kaminsky
 Jason Kasper
 John Kearsey
 Gordon & Anne Keatch^s
 Rob Kennedy & Claudette Leclerc
 Serena Helen Kraayeveld
 Leona J. MacDonald
 Cheryl Johansson^s & Michael
 Mainman
 Mark & Gloria Mancini
 Virginia Martin
 Peggy Barker & Ron McKinnon
 Jim* & Penny McLandress
 Barb Melnychuk
 Bob & Pat Migliore
 Jeffrey Morton*
 Ken & Sharon Mould
 Dr. Liam Murphy^s
 Robb & Heather Paterson
 Chris Pearce
 Scott Penner
 Gina & John* C. Petersmeyer
 Drs. Bill Pope & Elizabeth
 Tippet-Pope
 K. Heather Power & Harold Klause
 Margaret Redmond* & Greg Gillis
 Edward Fisher & Lyse Rémillard
 Joan D. Richardson
 Jean Riggall
 Michelle Rowan
 Michael T. Ruta
 Sharon Ryman
 Susan Skinner*
 Kevin Hines & Shelly Smith-Hines
 Bill & Laurie* Speers
 Deborah Spracklin
 Joan Stephens
 Joanne Tait
 Suzanne Ullyot
 Lionel & Lorraine Wiens
 Margaret^s & Alfred Wikjord
 Richard L. Yaffe* & John A. Statham^s
 Brenda Zaporzan^s
 2 Anonymous

TRIBUTE GIFTS

In memory of Rita Gunn

Kerry Dangerfield

In honor of Doneta Brotchie's

retirement from the Winnipeg
 Foundation's Grants Fund Board
 Winnipeg Foundation

In memory of Jean Bedford

Sharon Eadie

ENDOWMENT - STEVEN SCHIPPER FUND

Many thanks to the generosity of our Endowment Fund donors who gave a gift or fulfilled a pledge payment between Aug 1, 2022 and Sep 20, 2023. Amounts listed are cumulative.

\$5,000,000+

Government of Canada/
 Gouvernement du Canada
 Canadian Heritage/Patrimoine
 canadien

\$250,000-499,999

Gail Asper, OC, OM, LLD* &
 Michael Paterson

\$100,000-249,999

The Leigh & Liam Murphy Family Fund
 Henriette Ricou & Jure Manfreda

\$25,000-49,999

Susan Glass & Arni Thorsteinson
 J.K. May Investments Ltd.
 Cameron & Carole Osler

\$10,000-24,999

Don & Sheila Katz
 Susan & Keith Knox
 Garry Markham
 L. Blair Philpott & Tom Kynman
 Margaret^s & Alfred Wikjord

\$5,000-9,999

Margaret Caie
 Ron & Carol Chapman
 Pam & Andrew Cooke
 Maureen E. Jay
 Gina O'Connor & John C.
 Petersmeyer*
 Barbara Scheuneman

\$2,500-4,999

Don & Cheryl Breakey
 Rita & Don Campbell
 Jan & Kevin Coates
 Roberta Dyck
 Michael & Lynn Evans
 John & Margaret Graham
 Carol Campbell & Andy Krentz
 Jean & Lisa Neron
 Elaine Toms

\$1,000-2,499

Joan & Edward Alexander
 Ron & Joan Boyd
 Art & Donna Chow
 Agnes & John K. Collins
 Dorothy Davidson
 DGH Engineering Ltd.
 Brenda & Michael Evans
 Jeremy & Maureen Gordon
 Teresa A. Hay
 Jordan Janisse & Teresa Cooper
 Lynne Jentsch
 Barbara Latocki
 Barbara Main
 Peggy Barker & Ron McKinnon
 Estelle Meyers
 Paul & Elaine Neelon
 Joel Novek - in honour of Mr. & Mrs.
 Bob Martin
 Myron Pawlowsky & Susan Boulter
 Edna Poulter
 W. & N. Rennie
 Beverley Vane & Bill Shepherd
 Howie & Sue Simpson
 Deborah Spracklin
 Anonymous

\$500-999

Peggy Bainard Acheson - in memory
 of Judy Acheson
 Sandra Giercke
 Mr. & Mrs. Fred Kisil
 Dr. Shelley Mahoney
 Anthony & Joyce McWha
 Marlene Mortimer
 Sandra Sadler
 Bryce & Jenna Simes
 Peter & Sharon Taylor
 Gabor Vamos & Brenda Silver
 Anonymous

UP TO \$499

Ingrid Bolbecher
 Helene Dyck
 Allan & Evelyn Hardy
 Nancy Latocki
 Jacqueline L. Melnyk
 Bob & Pat Migliore
 Diane Schurek
 Elaine Walker
 Anonymous

MANY THANKS TO OUR VOLUNTEERS!

*Current Royal MTC Board of Trustees/Advisory Board members †Current Royal MTC staff *Monthly Donors/Drama Club †Fondly Remembered
 If you have remembered Royal MTC in your will, please let us know.

SUPPORTING PARTNERS

CORE FUNDERS



EXCLUSIVE PRODUCTION SUPPORTER



TOM HENDRY WAREHOUSE SEASON SPONSOR



OPENING NIGHT SPONSOR



JOHN HIRSCH MAINSTAGE PRODUCTION SPONSORS



TOM HENDRY WAREHOUSE PRODUCTION SPONSOR



JOHN HIRSCH MAINSTAGE PERFORMANCE SPONSORS



THEATRE FOR YOUNG AUDIENCES



NATIONAL MENTORSHIP PROGRAM



PIMOOTAYOWIN CREATORS CIRCLE



REGIONAL TOUR



UNDERSTUDIES



SUPPORTING PARTNERS

BLACK & WHITE BALL

SILVER SPONSOR



SILVER SPONSOR



AUCTION SPONSOR



COCKTAIL SPONSOR



FILLMORE RILEY VACATION RAFFLE SPONSORS

FillmoreRiley



AIR CANADA

VENUE SPONSOR



WINE SPONSOR



LAWYERS PLAY



THE MANITOBA BAR ASSOCIATION
L'ASSOCIATION DU BARREAU DU MANITOBA
A Branch of the Canadian Bar Association
Une division de l'Association du Barreau canadien



DESIGN SPONSOR



CAPITAL ASSISTANCE



SEASON MEDIA SPONSOR



SUPPORTING SPONSORS



WINNIPEG FRINGE THEATRE FESTIVAL



BEHIND THE SCENES

BOARD OF TRUSTEES

HONORARY MEMBERS

Her Honour, Lt. Governor Anita R. Neville
The Honourable Wab Kinew, Premier of Manitoba
His Worship, Mayor Scott Gillingham

EXECUTIVE OFFICERS

Laurie Speers, Chair
Edward Acuna, Chair-Elect & Nominating Committee Chair
Susan Freig, Secretary
David Kroft, Governance & Strategic Planning Committee Chair
Nalini Reddy, Inclusion, Diversity, Equity & Accessibility Committee Chair
Geeta Tucker, Treasurer & Organizational Performance Committee Chair
Claire Workman, Resource Development Committee Chair

TRUSTEES

Emily Burt
Brad Favel
Katherine Fox
David Lalama
Andrea Lochhead
Linda McGarva-Cohen
Jocelyne Prefontaine
Loren Remillard
Sudhir Sandhu
Jennifer Tesoro

ADVISORY COUNCIL

John Guttormson - Chair
Gail Asper
Doneta Brothie, CM
Angus Campbell
David Christie, Chair
Gerry Couture
Kerry Dangerfield
Hy Dashesvsky
Glen Dyrda, FCA
Anthony C. Fletcher
Jean Giguere
Charron Hamilton
Gary Hannaford, FCA
Yude Henteleff
Ken Houssin
Colin R. MacArthur, KC
Patrick J. Matthews
Jim McLandress
Jeffrey Morton, FCA
Hon. Jack Murta
Lillian Neaman
John Petersmeyer
Lawrence Prout
Jeff Quinton
Patricia Rabson
Margaret Redmond
Susan Skinner
Al Snyder
Maureen Watchorn

STAFF

ACCOUNTING/FINANCE

Carol Ellis, Director of Finance, CPA, CMA
Kim Friesen, Payroll Administrator
Yvonne O'Connor, Accounts Payable Administrator
Shelley Stroski, Controller

ADMINISTRATION

Kurt Brown, HR Generalist
Camilla Holland, Executive Director
Kathrin Moncaster, IT Manager

ARTISTIC

Katie German, Assistant Program Director, Pimootayowin Creators Circle
Melissa Langdon, Artistic Associate
Isabelle Ly, Producer
Ian Ross, Program Director, Pimootayowin Creators Circle
Kelly Thornton, Artistic Director
Leslie Watson, Company Manager

BOX OFFICE

Colleen Hrabí, Director of Patron Services
Meaghan Fletcher, Box Office Manager
Box Office Representatives: Sharon Bunn, Meagan Chrest, Stacie Gagnon, Jane Hunter, Alora Kempthorne, Shayla Meeroff, Daniel Mitchell, Carolin Schroeder, Tatiana Tuazon

CARPENTRY (JOHN HIRSCH MAINSTAGE)

Louis Gagné, Layout Carpenter
Brent Letain, Master Carpenter
Chris Seida, Scenic Carpenter

DEVELOPMENT

Patrick Hanan, Development Database Specialist
Manvir Kaur, RBC Career Launch Associate
Brendan McKeen, Individual Giving Manager
Melissa Novocosky, Director of Development
Stephanie Porrior, Event Coordinator

FRONT OF HOUSE

Ntara Curry, Front of House Manager, Tom Hendry Warehouse
Alanna McPherson, Assistant Front of House Manager
Cole Reuther, Assistant Front of House Manager
Janice Marple, Volunteer Coordinator
Front of House Staff: Besso Ghassan, Cassidy Groening, Christina Reid, Cindy Bell, Cobi Winston, Coral Ross, Darrah Horobetz, Haeln Gebre, Jennifer Brisson, Joanna Houston, Kimmy Martin, Kyra Lyle, Rachael Donald, Renelle Chartier, Rylan de Vries

MAINTENANCE

Chris Fletcher, Building Manager
Wesley Leask, Assistant Building Manager

MARKETING & COMMUNICATIONS

Ksenia Broda-Milian, Education and Enrichment Manager
Sue Caughlin, Marketing & Communications Manager
Katie Inverarity, Director of Marketing & Communications
Desiree La Vallee, Ticketing Application Specialist
Savannah Lillies, Marketing & Communications Coordinator
Lauren Wagn, Communications & Social Media Manager

PAINT

Shauna Jones, Assistant Head Scenic Artist
Carla Schroeder, Head Scenic Artist

PRODUCTION

Christine Corthey, Production Associate
Ian Kirk, Production Driver
Jaxun Maron, Assistant Technical Director
Russell Martin, Director of Production
Donnie Oesler, Technical Director
Brenda Vaca, Assistant Production Manager

PROPERTIES

Khailer Bautista, Props Builder
Rachel Bazuk, Props Buyer
Linda Beech, Props Builder
Zoë Leclerc-Kennedy, Props Builder/Buyer
Jamie Plummer, Head of Props (on leave)
Ryan Spracklin, Props Builder

STAGE CREW

Chris Coyne, Head of Sound
Kayla McSwain, Head of Wardrobe
Gary Plouffe, House Stage Hand
Claude Robert, Head Electrician
Chris Thomson, Head Carpenter

TOM HENDRY WAREHOUSE

Tim Clark, Head of Sound
Ryan Spracklin, Master Carpenter
Fisher Wohlgemut, Head Electrician

WARDROBE

Thora Lamont, Head of Wardrobe, Cutter
Heather Thorleifson, Associate Head of Wardrobe
Jackie Van Winkle, Head Buyer & Accessories Coordinator

WIGS

Beverly Covert, Head of Wigs/Make-Up

WINNIPEG FRINGE THEATRE FESTIVAL

Chuck McEwen, Executive Producer
Tori Popp, Festival Manager

HONORARY STAFF

Zaz Bajon, General Manager Emeritus
Steven Schipper, CM, OM, Artistic Director Emeritus

BEHIND THE SCENES

ADDITIONAL PRODUCTION STAFF

CLUE

Kim Crossley, Cutter
Penny Hanford, Stitcher
Ellen Hatley, Scenic Painter
Deborah Lount, Stitcher
Karen Luchak, Stitcher
Barbara Mackenzie, Stitcher
Martha Schram, Stitcher
Larissa Shabaga, Scenic Painter
Liam Shattuck, Carpenter
Evan Stillwater, Tailor
Steven Vande Vyvere, Carpenter
Joy Willis, Stitcher

FIRST MÉTIS MAN OF ODESA

Teri-Lynn Kosinski, Stage Carpenter

Additional staff provided by IATSE Local 63



The 2023/24 Royal MTC Board of Trustees. PHOTO BY DYLAN HEWLETT



The cast of 9 to 5 The Musical. PHOTO BY DAVID SWIECICKI

A Hilarious Way to Make a Living!

The 2023 Lawyers Play cast certainly worked overtime on our 30th annual fundraising play, *9 to 5 The Musical*! The mighty team took on the campy cult classic filled with toe-tapping Dolly Parton hits. They donned their best blonde wigs and finest vintage office attire, delighting audiences from May 9 to 13 at the Tom Hendry Warehouse.

Cast entirely with Manitoba Bar Association members, the Lawyers Play is one of Royal MTC's largest fundraisers. Since its inception, this gala event has raised over \$1.1 million to support MTC and the Winnipeg Fringe Theatre Festival.

Our deepest gratitude to patrons, donors, advertisers and sponsors for supporting our efforts. We'd also like to extend sincere thanks to the talented cast and hardworking crew, as well as our many volunteers and committee members. ●

CAST

Gail Asper	Caleigh Clawson	Jordan Lang	Myron Pawlowsky	Maria Sabourin
Kathrine Basarab	Benji Greenberg	Joel Lebois	Victoria Perrie	Steve Scarfone
Andrea Bellhouse	Kate Henley	Hayley Main	Sandi Phillips	
Jennifer Bird	Deanna Hiebert	Jennifer Malabar	Ashley Pledger	
Laura Diamond	David Kroft	Jim McLandress	Jodi Plenert	
Tashia Dreger	Melanie LaBossiere	Jeff Palamar	Pamela Reilly	

Director / Choreographer: Jillian Willems*, Music Director: Phil Corrin

PRESENTING SPONSOR

300 Main

SILVER SPONSOR

Lawton Partners

RECEPTION SPONSORS

University of Manitoba
- Faculty of Law
Fairmont Winnipeg

WINE SPONSOR

Jones & Company Wine
Merchants

DESIGN SPONSOR

Relish Branding

SUPPORTERS

BluFish Japanese
Restaurant
Corrientes Argentine
Pizzeria
Red River Co-op

COMMITTEE

Jeff Palamar - Chair
Debra Danco
Michelle Falk
Caleigh Clawson
Melissa Hazelton
Jamie Jurczak
Stacey Soldier
Stéphanie Tétreault

*The participation of this Artist was arranged by permission of Canadian Actors' Equity Association under the provisions of the Dance • Opera • Theatre Policy (DOT).

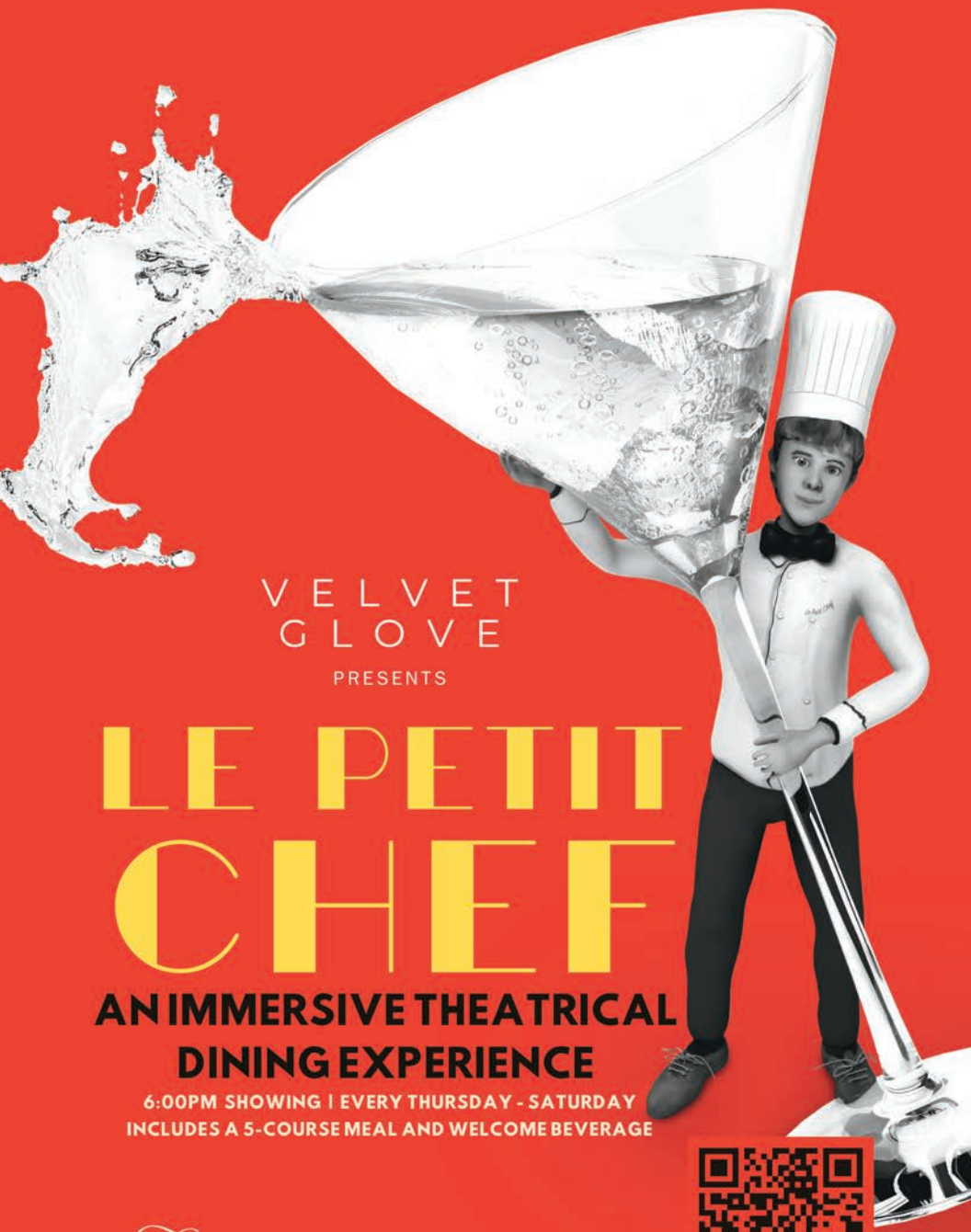


Empowering
creative
young minds

Proudly supporting
Royal Manitoba Theatre Centre

Canada Life and design are trademarks
of The Canada Life Assurance Company.

canada ™



VELVET
GLOVE

PRESENTS

LE PETIT CHEF

**AN IMMERSIVE THEATRICAL
DINING EXPERIENCE**

6:00PM SHOWING | EVERY THURSDAY - SATURDAY
INCLUDES A 5-COURSE MEAL AND WELCOME BEVERAGE

Fairmont
WINNIPEG

SCAN TO LEARN MORE, VIEW MENU
AND PURCHASE TICKETS!

