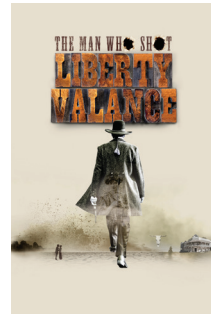




ENJOY 6 PLAYS  
**FOR ONLY \$138 + GST...**

**PLUS**  
RECEIVE A VOUCHER FOR 50% OFF  
ANY WAREHOUSE PRODUCTION...  
ANY SEAT, ANY NIGHT!

2015/16 CORPORATE OFFER:  
**6 PLAYS FOR \$138 + GST**  
YOU GET ALL 6 JOHN HIRSCH MAINSTAGE PLAYS



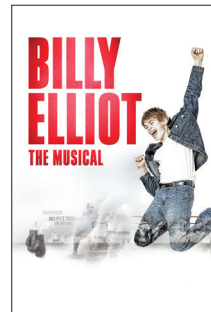
**THE MAN WHO SHOT  
LIBERTY VALANCE**

A young lawyer travels west in search of adventure, only to find himself at odds with a vicious outlaw. Will our unlikely hero turn and run, or stand his ground and become a Wild West legend in his own right?



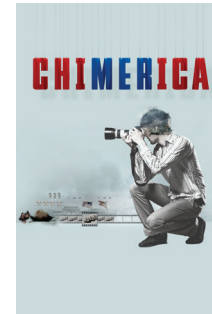
**ALICE THROUGH THE  
LOOKING-GLASS**

Everything is turned topsy-turvy and misrule rules as Alice travels back to a world of wonders through the looking-glass. Spirited, imaginative and ridiculously fun, *Alice Through the Looking-Glass* is sure to delight the child in each of us.



**BILLY ELLIOT THE MUSICAL**

Despite a bitter miners' strike, Billy seems destined to follow his father and brother to the coal mines. But when he stumbles into a ballet class, his eyes are opened to a new world of opportunity in this inspiring musical about defying the odds.



**CHIMERICA**

After hundreds of students are massacred in Tiananmen Square, rookie journalist Joe Schofield snaps a photo of a lone protestor confronting a tank. Twenty years later, a cryptic tip-off launches him on a thrilling quest as he searches for new truths about the unknown hero.



**UNNECESSARY FARCE**

An undercover sting operation goes helplessly awry in this hilarious tailspin of mistaken identities, surprise twists and unintentional innuendo that's filled with so much theatrical tomfoolery and fun, it should be illegal.



**BOOM**

From the Second World War to Apollo 11, the Cold War and everything in between, Dora Award-winner Rick Miller plays over 100 characters on an explosive multimedia journey through the music, culture and events that defined the Baby Boomer generation.

**PLUS**

RECEIVE A VOUCHER FOR  
50% OFF ANY WAREHOUSE  
PRODUCTION...  
ANY SEAT, ANY NIGHT!



**SEMINAR**

Undeniably charismatic and indisputably harsh, a famous novelist throws the book at his students in a writing seminar punctuated by professional envy, personal jealousy and sexual tension. Can his wandering eye spot real talent?



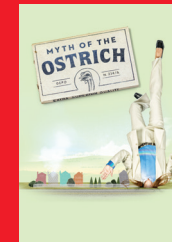
**WIESENTHAL**

After surviving the Holocaust with his family destroyed but his humanity intact, Simon Wiesenthal devoted his life to tracking Nazi war criminals, bringing more than 1,100 to justice. Told with wit and wisdom, Tom Dugan's award-winning play finds universal resonance in one man's story.



**THINGS WE DO FOR LOVE**

When Barbara rents out her top floor to an old friend and her fiancé, she unwittingly unleashes a firestorm of unexpected and violent passions. As love invades her home like a boorish houseguest, Barbara's well-ordered world threatens to come undone.



**MYTH OF THE OSTRICH**

Pam arrives on Holly's doorstep, eager to discuss their teenagers' blossoming romance. What begins as a social call quickly - and hilariously - turns into an unpredictable afternoon with life-altering consequences.



# CALENDAR

Check the related series dates closely as performances are not always on the same day or time of the week. Tickets are exchangeable for \$5/ticket, and only within the dates offered in the corporate offer series.

| SERIES   | ...LIBERTY<br>VALANCE | ALICE<br>THROUGH...  | BILLY ELLIOT         | CHIMERICA            | UNNECESSARY<br>FARCE | BOOM                 |
|----------|-----------------------|----------------------|----------------------|----------------------|----------------------|----------------------|
| SERIES 1 | Thu Oct 15 8:00 p.m.  | Thu Nov 26 8:00 p.m. | Tue Jan 12 7:30 p.m. | Thu Feb 25 8:00 p.m. | Thu Mar 31 8:00 p.m. | Thu Apr 28 8:00 p.m. |
| SERIES 2 | Fri Oct 16 7:30 p.m.  | Fri Nov 27 7:30 p.m. | Tue Jan 12 7:30 p.m. | Fri Feb 26 7:30 p.m. | Fri Apr 1 7:30 p.m.  | Fri Apr 29 7:30 p.m. |
| SERIES 3 | Tue Oct 13 7:30 p.m.  | Sat Nov 28 8:30 p.m. | Sat Jan 16 8:30 p.m. | Sat Feb 27 8:30 p.m. | Sat Apr 2 8:30 p.m.  | Sat Apr 30 8:30 p.m. |
| SERIES 4 | Tue Oct 13 7:30 p.m.  | Thu Dec 3 8:00 p.m.  | Thu Jan 21 8:00 p.m. | Thu Mar 3 8:00 p.m.  | Thu Apr 7 8:00 p.m.  | Thu May 5 8:00 p.m.  |
| SERIES 5 | Tue Oct 13 7:30 p.m.  | Fri Dec 4 7:30 p.m.  | Fri Jan 22 7:30 p.m. | Fri Mar 4 7:30 p.m.  | Fri Apr 8 7:30 p.m.  | Fri May 6 7:30 p.m.  |
| SERIES 6 | Sat Oct 24 8:30 p.m.  | Sat Dec 5 8:30 p.m.  | Tue Jan 12 7:30 p.m. | Sat Mar 5 8:30 p.m.  | Sat Apr 9 8:30 p.m.  | Sat May 7 8:30 p.m.  |



•• One of the most ingeniously inventive and infectiously fun-loving productions imaginable••

— THE RECORD (ALICE THROUGH THE LOOKING-GLASS)

•• Dynamic, special, insightful and innovative••

— CALGARY SUN (BOOM)

•• Heartfelt, deeply moving and compelling. It should be required viewing for all ••

— HUFFINGTON POST (WIESENTHAL)

•• A bona-fide, gut-busting laugh-a-thon ••

— DAILY HERALD, CHICAGO (UNNECESSARY FARCE)

# SUBSCRIBING IS LIBERATING!

## 1) CHOOSE YOUR PERFORMANCE SERIES

I've indicated my 1<sup>st</sup> and 2<sup>nd</sup> choice on the attached order form so Royal MTC may accommodate my request more easily. I understand that because of the incredible value of this offer, tickets are non-refundable and subject to a \$5 exchange fee per seat. Exchanges made on the day of the performance are also subject to a \$5 same-day exchange fee per seat. Due to heavy demand for Priority (full-priced) subscriptions, some series may have limited availability. Seating is in selected areas only on a first-come, first-served basis. Seating assignment may vary for each performance. Full payment must accompany order before seats can be assigned.

### PLUS:

All Corporate Offer subscribers receive a voucher for 50% off any 2015/16 Warehouse production...any seat, any night! (Limit one ticket at 50% off per subscription.)

## 2) TOTAL VALUE OF YOUR SUBSCRIPTIONS

Use the attached order form to indicate the total value of your subscriptions as well as your chosen method of payment. Max. four (4) subscriptions at this special rate.

## 3) SUBSCRIBE NOW, IT'S EASY:

### ONLINE

RoyalMTC.ca/mycorpoffer

### IN PERSON/MAIL

Royal MTC Box Office: 174 Market Ave. Winnipeg, MB, R3B 0P8

Offer subject to availability. There are absolutely no refunds and tickets are subject to a \$5 exchange fee per seat, and are also subject to a \$5 same-day exchange fee per seat. This is an introductory offer which is not renewable at these prices. Exchanges available only within dates offered in the Corporate Offer performance series. Sorry, exchanges not available for an alternate play or missed performances.

For information regarding this offer or other Royal MTC subscription opportunities, please call the Royal MTC Box Office at 204 942 6537.

YOUR PRIVACY IS IMPORTANT TO US. The Royal Manitoba Theatre Centre (whose operations include, but are not limited to, the John Hirsch Mainstage and Tom Hendry Warehouse, the Winnipeg Fringe Theatre Festival, Master Playwright Theatre Festival and the Royal MTC Regional Tour) does not lend, rent, or sell its patron lists to any organization or individuals.

This offer is only available to current employees of current Royal MTC corporate donors.

# 2015/16 CORPORATE OFFER

Sorry, no phone orders accepted.  
Please mail or fax your order as indicated on left.  
Or subscribe online at [RoyalMTC.ca/mycorpoffer](http://RoyalMTC.ca/mycorpoffer)

Thanks to my employer's generous support of Royal MTC,  
I'm looking forward to a great season of entertainment!

COMPANY

EMPLOYEE NUMBER

NAME: MR/MRS/MS.

ADDRESS

CITY PROVINCE POSTAL CODE

PHONE

EMAIL

☐ I WANT TO BE ON THE ROYAL MTC E-LIST and receive the latest news on upcoming productions, events and special offers by email

## 1) PERFORMANCE SERIES 6 Plays for \$138 + GST

Please indicate your 1<sup>st</sup> and 2<sup>nd</sup> choices from the following performances series (see calendar):

☐ SERIES 1 ☐ SERIES 2 ☐ SERIES 3 ☐ SERIES 4 ☐ SERIES 5 ☐ SERIES 6

## 2) TOTAL THE VALUE OF YOUR SUBSCRIPTIONS

Max. four (4) subscriptions available at this special rate.

\_\_\_\_ Subscriptions at \$144.90 (\$138+ GST) = \$ \_\_\_\_

PLUS Handling Fee = \$5 per order **Total** \$ \_\_\_\_

☐ Please mail mysubscriptions to me

☐ I'll pick up my tickets in person from the Royal MTC Box Office (174 Market Ave.)

I'd like to pay by (payment in full must accompany order; postdated payments not accepted): ☐ Cheque (by mail or in person only); cheque payment must include \$5 per order handling fee; or, ☐ Visa ☐ MasterCard ☐ American Express

Provide your information and payment details

CREDIT CARD NUMBER

EXPIRY DATE NAME ON CARD

This special offer expires Saturday, October 24, 2015 at 5pm!