

OVATION

ROYAL
MTC
MANITOBA THEATRE CENTRE

VOL 31 • NO 5
MAR/APR 2024

THE LEHMAN TRILOGY

By Stefano Massini
Adapted by Ben Power



JOHN
HIRSCH
MAINSTAGE

A Tarragon Theatre Production

GUILT:

A LOVE STORY

By Diane Flacks

PRODUCTION SPONSOR

THE
ASPER
FOUNDATION

TOM
HENDRY
WAREHOUSE

TOM HENDRY WAREHOUSE
SEASON SPONSOR

BMO



LONG-TERM GOALS

CREATE LASTING SUCCESS



JAMES RICHARDSON & SONS, LIMITED

ESTABLISHED 1857
AND AFFILIATED COMPANIES

Proudly supporting and celebrating arts, culture and creativity in our community.

MESSAGE FROM THE ARTISTIC DIRECTOR



Welcome to the theatre. I'm thrilled to bring these two extraordinary plays to the stage.

The Lehman Trilogy spans three generations and chronicles over 150 years of American history, telling the saga of three immigrant brothers' rags-to-riches-to-ruins story. Based on the novel by Stefano Massini, and inspired by the cataclysmic financial collapse of 2008, the story is a cautionary tale of unbridled capitalism. What is interesting is how from their origin as a dry goods store in Alabama to one of the largest investment firms in the world, by the time the Lehman Brothers collapsed, there were no family members even left in the firm.

It must be noted that Massini, an Italian Catholic, by dipping his toes into the history of a nation not his own, wades sometimes imperfectly into complex issues of race, and religious dynamics that he may not be fully equipped to address. While he delves into the Civil War, slavery is merely a footnote in the story; and one could argue that the author's fixation with the Lehman's religious background serves to perpetuate antisemitic tropes. Regardless, the play is a remarkable achievement in storytelling, a sweeping swath of history, and I commend the diligence of our core team of artists who have dealt with this material with such sensitivity and care.

In *Guilt: A Love Story*, Diane Flacks takes us on an intimate journey of her own. Also epic, in its emotional scope, *Guilt* is a profoundly personal, courageous and deeply funny look at desire, betrayal and forgiveness in her loving portrait of a family in the throes of divorce. I am so pleased to share Flacks' complex human story with you all.

Thank you so much for joining us,

A handwritten signature in black ink that reads 'Kelly'.

Royal Manitoba Theatre Centre is proud to call Manitoba home. Royal MTC is located in Winnipeg on Treaty 1, the traditional territory of the Anishinaabeg, Cree, Oji-Cree and Dakota people, and the National Homeland of the Red River Métis. We are thankful for the benefits sharing this land has afforded us, acknowledge the responsibilities of the Treaties, and embrace the opportunity to partner with Indigenous communities in the spirit of reconciliation and collaboration.

THEATRE ABBREVIATION LEGEND

A.C.T. American Conservatory Theater • San Francisco, CA	Rainbow Rainbow Stage • Winnipeg, MB
Arts Club Arts Club Theatre Company • Vancouver, BC	RNT Royal National Theatre • London, England
ATF Atlantic Theatre Festival • Wolfville, NS	Royal Alex The Royal Alexandra Theatre • Toronto, ON
ATP Alberta Theatre Projects • Calgary, AB	RSC Royal Shakespeare Company • Stratford-upon-Avon, England
BAM Brooklyn Academy of Music • NYC	RWB Royal Winnipeg Ballet • Winnipeg, MB
Bard on the Beach Bard on the Beach Shakespeare Festival • Vancouver, BC	Sarasvati Sarasvati Productions • Winnipeg, MB
Belfry The Belfry Theatre • Victoria, BC	Segal The Segal Centre for Performing Arts • Montreal, QC
Blyth Blyth Theatre Festival • Blyth, ON	Shaw Shaw Festival • Niagara-on-the-Lake, ON
Broadway Theatre district • New York, NY	SIR Shakespeare in the Ruins • Winnipeg, MB
CBC Canadian Broadcasting Corporation	Soulpepper Soulpepper Theatre Company • Toronto, ON
Centaur Centaur Theatre Company • Montreal, QC	Stratford Stratford Festival • Stratford, ON
Citadel The Citadel Theatre • Edmonton, AB	SummerWorks SummerWorks Theatre Festival • Toronto, ON
COC Canadian Opera Company • Toronto, ON	TA Theatre Aquarius • Hamilton, ON
CS Canadian Stage • Toronto, ON	Tarragon Tarragon Theatre • Toronto, ON
Dora Dora Mavor Moore Award • Toronto, ON	TBTR Theatre by the River • Winnipeg, MB
Drayton Drayton Entertainment • Ontario	TC Theatre Calgary • Calgary, AB
Dry Cold Dry Cold Productions • Winnipeg, MB	TIFT Talk is Free Theatre • Barrie, ON
Factory Factory Theatre • Toronto, ON	TNB Theatre New Brunswick • Fredericton, NB
GCTC The Great Canadian Theatre Company • Ottawa, ON	Toronto Free Toronto Free Theatre • Toronto, ON
Grand The Grand Theatre • London, ON	TPM Theatre Projects Manitoba • Winnipeg, MB
HGJT Harold Green Jewish Theatre Company • Toronto, ON	TSO Toronto Symphony Orchestra
Mirvish Mirvish Productions • Toronto, ON	U of M University of Manitoba
Moving Target Moving Target Theatre Company • Winnipeg, MB	U of T University of Toronto
MTYP Manitoba Theatre for Young People • Winnipeg, MB	U of W University of Winnipeg
NAC National Arts Centre • Ottawa, ON	ViC The Village Conservatory for Music Theatre • Winnipeg, MB
Necessary Angel Necessary Angel Theatre Company • Toronto, ON	VP Vancouver Playhouse Theatre Company • Vancouver, BC
Neptune Neptune Theatre • Halifax, NS	West End Theatre district • London, England
NFB National Film Board of Canada	WCT Western Canada Theatre • Kamloops, BC
NTS National Theatre School of Canada • Montreal, QC	WJT Winnipeg Jewish Theatre
Persephone Persephone Theatre • Saskatoon, SK	WSO Winnipeg Symphony Orchestra
PTAM Popular Theatre Alliance of Manitoba • Winnipeg, MB	WST Winnipeg Studio Theatre
PTE Prairie Theatre Exchange • Winnipeg, MB	YPT Young People's Theatre • Toronto, ON
	zone41 zone41 theatre • Winnipeg, MB

OVATION

VOLUME 31, NUMBER 5
MARCH/APRIL 2024

Ovation is published six times per theatre season and has an approximate yearly circulation of 85,000.

PRINTING: Premier Printing Ltd.

ADVERTISING INQUIRIES

Savannah Lillies

TELEPHONE: 204 934 0309

EMAIL: slillies@royalmtc.ca

ROYAL MTC MANITOBA THEATRE CENTRE

Royal Manitoba Theatre Centre
174 Market Avenue
Winnipeg, MB R3B 0P8
Canada

RoyalMTC.ca

BOX OFFICE: 204 942 6537

ADMINISTRATION: 204 956 1340

FAX: 204 947 3741

Royal MTC is a member of the Professional Association of Canadian Theatres and engages, under the terms of the Canadian Theatre Agreement, professional artists who are members of the Canadian Actors' Equity Association.

Scenery, Carpentry and Show Running Crew at the John Hirsch Mainstage and the Tom Hendry Warehouse are members of IATSE Local 63.

USHERS • Royal MTC's loyal volunteer ushers are available at every performance to assist patrons.

LATECOMERS • Latecomers will be seated at the discretion of the House Manager.

COURTESY TO OTHERS • Talking, candy wrappers and coughing are distracting to fellow patrons and actors. We ask each patron to please keep noise to a minimum during a performance. Thank you for your cooperation.

SCENTS AND ALLERGIES • A number of Royal MTC patrons have expressed concerns regarding medical reactions caused by scented products, so much so that they can't enjoy the show. Please consider others before using items such as colognes, perfumes and hairspray. Your thoughtfulness is appreciated.

HEARING ENHANCEMENT • Sennheiser Infrared Listening Devices are available free of charge in the lobby at the John Hirsch Mainstage and Tom Hendry Warehouse, supplied by the Royal MTC Volunteer Corps of Ushers Capital Campaign donation. Please see the House Manager for details.

PROHIBITED • The use of cameras and recording devices is strictly prohibited. Mobile devices must be turned off. To be contacted in an emergency, leave your name and seat number with the House Manager.

WARNINGS • On occasion, Royal MTC's productions may contain script-specific smoking of non-tobacco products, special effects and language/content warnings. For more information on specific productions, please visit royalmtc.ca.

HERMANOS

RESTAURANT & WINE BAR

JOIN US FOR DINNER
BEFORE THE SHOW!

MTC SEASON TICKET HOLDERS RECEIVE 15% OFF

179 BANNATYNE AVE | WINNIPEG, MANITOBA R3B 0R5

For reservations book at Hermanos.ca or call **204-219-0779**

Lehman Brothers Timeline

The story of Lehman Brothers spans over 150 years and showcases the significant role investment banking played in the growth and development of the US economy. Originally founded as a family partnership operating a general store, Lehman Brothers evolved into a commodities brokerage and eventually became the fourth-largest investment banking house in the United States.

Throughout its history, Lehman Brothers weathered numerous challenges, including the Civil War, financial panics, two world wars, the Great Depression, mergers and the 9/11 tragedy. Despite these obstacles, the firm successfully transitioned from a family-run private partnership that endured for over a century to a publicly traded company.

However, in the early 2000s, Lehman Brothers increasingly invested in derivatives and subprime mortgages. Unfortunately, losses stemming from these investments played a significant role in the firm’s eventual filing for bankruptcy in 2008.

1844

Henry Lehman emigrates from Rimpar, Germany and settles in Montgomery, Alabama, where he opens a general store specializing in dry goods.

1870

Lehman Brothers helps found the New York Cotton Exchange.

1850s

Henry Lehman is joined by his brothers Emanuel and Mayer and their establishment becomes Lehman Brothers.

1887

Lehman Brothers becomes a member of the New York Stock Exchange.

1858

Lehman Brothers transitions into the cotton commodity business and opens a branch in New York City.

1899

Lehman Brothers takes on investment banking activities, issuing its first public offering for the International Steam Pump Company.

1861
TO
1865

The Civil War causes devastation to the Southern economy and cotton trade.

1901
TO
1925

Philip Lehman serves as head of Lehman Brothers.

1913

The Federal Reserve Bank is established in response to the financial panic of 1907.



Manhattan location of Lehman Brothers. PHOTO BY DAVID SHANKBONE

1925
TO
1969

Robert Lehman takes over leadership of Lehman Brothers.

1929

Lehman Brothers forms the Lehman Corporation, a closed-end investment company.

1929
TO
1933

The stock market crashes in late October 1929 contributing to the Great Depression and global economic collapse.

1933

Congress passes the Glass-Steagall Act separating commercial banks from investment banks.

1934

Congress establishes the Securities Exchange Commission regulating the securities industry.

1950s

The postwar economic boom contributes to a rise in investment banking activities.

1958

Lehman Brothers established the One William Street Fund, a mutual fund of diversified holdings.

1969

Robert Lehman, the last family member to head Lehman Brothers, dies.

1969
TO
1973

Frederick Ehrman takes over management of Lehman Brothers.

1973
TO
1983

Peter Peterson serves as CEO of Lehman Brothers.

1973

The oil crisis brings about a significant price increase in oil and a weakening economy.

1977

Lehman Brothers merges with Kuhn, Loeb & Co. The firm expands its global operations and business in mergers and acquisitions.

THE LEHMAN TRILOGY

1983
TO
1984

Lehman Brothers buys five mortgage lenders and becomes heavily invested in mortgage-backed securities.

1984

Shearson Division of American Express acquires Lehman Brothers.

OCT 19
1987

Global financial markets plunge on Black Monday.

1994

Lehman Brothers is spun off from American Express into Lehman Brothers Holdings, Inc. Richard Fuld becomes CEO.

1999

Financial Services Modernization Act repeals the 1933 Glass-Steagall Act that separated commercial from investment banks.

SEP 11
2001

Terrorist attacks on the World Trade Center affect global markets.

2002

Lehman relocates its operations from its Wall Street location to Midtown Manhattan.

2000s

2007

The financial crisis begins to unfold with the sale of two Bear Stearns hedge funds in mortgage-backed securities.

SEP 15
2008

Lehman Brothers files for bankruptcy.

SEP 16
2008

Barclays agrees to buy Lehman Brothers' US operations.

SEP 22
2008

Nomura agrees to acquire Lehman Brothers' Asian and European operations.

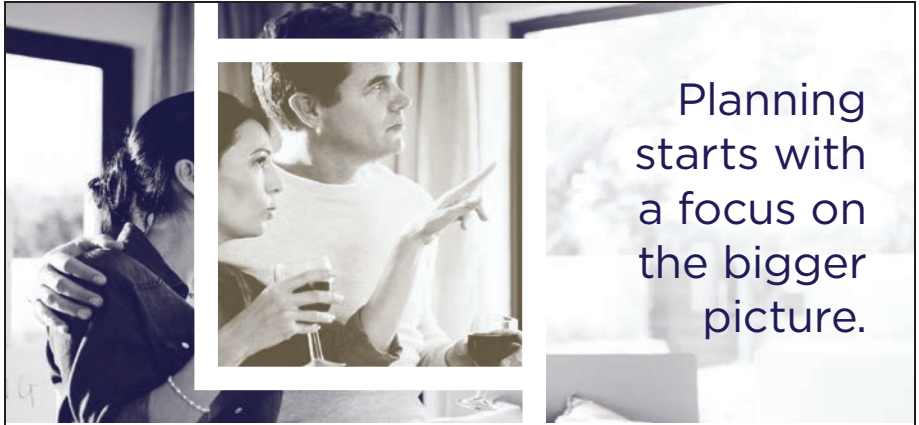
2008
TO
2009

Continuing impact of the financial crisis causes economic decline in national and global markets that leads to the Great Recession. ●

SOURCE: LIBRARY.HBS.EDU



SYNOPSIS - He had been dreaming of America. On September 11, 1844, Henry Lehman arrives from Bavaria on Dock No. 4 in the port of New York. After relocating to Montgomery, Alabama and later joined by brothers Emanuel and Mayer, the family will go on to become one of the most powerful in the United States. With masterful storytelling, the three actors portray nearly 60 characters over multiple generations, from resourceful immigrants in the deep south to working at the epicenter of Wall Street. *The Lehman Trilogy* tells the history of America, capitalism, and the rise (and fall) of a financial empire and its part in the 2008 banking crisis. ●



Planning
starts with
a focus on
the bigger
picture.

At Lawton Partners, we guide our clients with insight and experience.
We believe it's important to be leaders in our community as well as in business.

You belong in the company of leaders.
lawtonpartners.ca



TAYLOR McCAFFREY

LAWYERS

Taylor McCaffrey proudly supports Royal MTC and gratefully acknowledges the rich contribution made by Manitoba's Arts Community to our province.

A rags to riches tale, The Lehman Trilogy promises to be an exceptional performance.

Break a leg to all those involved in the production.

2200-201 Portage Ave
Winnipeg, Manitoba | R3B 3L3
204.949.1312 | www.tmlawyers.com

PRESENTS

The Lehman Trilogy

By Stefano Massini
 Adapted by Ben Power

March 21 – April 13, 2024

PREVIEW March 20

Director Richard Greenblatt
 Set & Costume Designer Gillian Gallow**
 Lighting & Video Designer Hugh Conacher**
 Original Compositions & Sound Designer Ashley Au
 Dialect Coach Jane Gooderham
 Apprentice Director Cora Matheson*
 Assistant Lighting & Video Designer Katriona Dunn^{ll}
 Apprentice Lighting & Video Designer Anika Binding^{ts}
 Language Consultants Dr. Stephanie Hatzifilalithis,
 Maria Syrgiannis, Arpad Szigeti & Maria Vacratsis
 Stage Manager Dustyn Wales
 Assistant Stage Manager Katie Schmidt[†]
 Apprentice Stage Manager Samantha Sage

THE CAST (IN ALPHABETICAL ORDER)

Emanuel Lehman Ari Cohen[†]
 Mayer Lehman Jordan Pettle
 Henry Lehman Alex Poch Goldin

The Lehman Trilogy is performed with a 20-minute intermission and a 10-minute pause.

The Lehman Trilogy is presented by arrangement with Concord Theatricals on behalf of Samuel French, Inc.
www.concordtheatricals.com

The Lehman Trilogy was first presented by the National Theatre and Neal Street Productions Ltd, that jointly commissioned the English adaptation of the original play, *The Lehman Trilogy*, at the Lyttleton Theatre on Thursday 12th July 2018 and transferred to the Piccadilly Theatre, West End.

The National Theatre and Neal Street Productions Ltd presented the US premiere of *The Lehman Trilogy* on 27th March 2019 at the Park Avenue Armoury, New York and first presented the production on Broadway at the Nederlander Theatre on 14th October 2021.

Peter Chapman is author of *THE LAST OF THE IMPERIOUS RICH: LEHMAN BROTHERS, 1844-2008*, a leading reference on the history of the Lehman family.

The videotaping or making of electronic or other audio and/or visual recordings of this production and distributing recordings or streams in any medium, including the internet, is strictly prohibited, a violation of the author(s)'s rights and actionable under the United States copyright law. For more information, please visit: concordtheatricals.com/resources/protecting-artists.

Production photography by Dylan Hewlett.

**Indicated designers on this production are represented by the Associated Designers of Canada, IATSE Local ADC659

*Position funded through the Jean Murray - Moray Sinclair Theatre Apprenticeship Program

[†]Past Jean Murray - Moray Sinclair apprenticeship or scholarship recipient [§]Funded by Winnipeg Arts Council and position made possible by Creative Manitoba ^{ll}Services made possible through the Associated Designers of Canada Mentorship Program funded by the Canada Council for the Arts and through Calgary Arts Development

THE LEHMAN TRILOGY



Ari Cohen
Emanuel Lehman

ROYAL MTC *Falstaff, The Sisters Rosensweig, Picasso at the Lapin Agile* (with NAC), *Proposals* (with Mirvish), *A Streetcar Named Desire* (with Citadel), *The Last Night of Ballyhoo* (with WJT/Saidye Bronfman), *The Rainmaker* (with VP), *Proof* (with Citadel), *Good People*.

OTHER THEATRE *Antipodes* at Coal Mine and numerous appearances at Soulpepper – most recently *August: Osage County*. Other appearances at CS, Tarragon, Factory, Neptune, Citadel, NAC, VP, Globe, Blyth and PTE.

FILM/TV Selected: *Priscilla* (dir. Sofia Coppola); *Maps to the Stars* (dir. David Cronenberg); *Molly's Game* (dir. Aaron Sorkin). Recent recurring roles on *Fargo*, *Heartland* and *The Hardy Boys*.

TRAINING Alumnus of U of M's Black Hole Theatre and a BFA from the U of A.

ET CETERA Ari made his professional debut here at MTC in 1987 and his film debut in Guy Maddin's *Archangel* (1990). He is thrilled to be back home amongst so many friends and family.



Jordan Pettle
Mayer Lehman

ROYAL MTC First appearance.

OTHER THEATRE *The Lehman Trilogy, Sunday Father, Written on Water* (CS); *The Effect* (Coal Mine); *King Lear/Queen Goneril, Betrayal, A Christmas Carol, Twelve Angry Men, Speed-the-Plow, Waiting for Godot* (Soulpepper); *Oslo* (Studio 180/Mirvish); *Sextet, The Waiting Room, Generous* (Tarragon); *King Lear, The Cherry Orchard, A Midsummer Night's Dream* (Stratford); *Way to Heaven, Angels in America* (WJT); *The League of Nathans* (PTE); *Romeo and Juliet* (Citadel).

FILM/TV *Suits, Murdoch Mysteries, American Woman, Titans, Kim's Convenience*.

TRAINING Graduate of National Theatre School (1994).

ET CETERA Jordan would like to thank his wife Shannon, and his sons Sammy and Avi, for their love and support.



ROYAL
MTC
MANITOBA THEATRE CENTRE

THEATRE FOR FANS UNDER 30

Looking for a great night out that's easy on your wallet? Theatre Under 30 members, aged 18 - 29, have exclusive access to world-class theatre for just \$20 a seat!

SIGN UP TODAY AT ROYALMTC.CA/UNDER30

FOR MORE INFORMATION, PLEASE CONTACT
KSENIA BRODA-MILIAN AT UNDER30@ROYALMTC.CA

TESS BENDER IN *BEAUTIFUL: THE CAROLE KING MUSICAL*. PHOTO BY EMELIA HELLMAN.

THE LEHMAN TRILOGY



Alex Poch Goldin
Henry Lehman

ROYAL MTC *Bang Bang* (Evie Award), *Network*, *Trouble in Mind*, *King Lear*, *Scorched*, *My Name is Asher Lev* (with Segal - META Award).

OTHER THEATRE *Prayer for the French Republic* (Segal); *Ma Rainey's Black Bottom*, *Incident at Vichy* (Soulpepper - Dora Award); *Oslo*, *Disgraced* (Mirvish); *Angels in America* (year-long run), *Intimate Apparel*, *The Comedy of Errors*, *The Tempest* (Canadian Stage); *Wit* (Jessie nomination - VP); *Belle* (NAC/Factory); *Amadeus*, *Possible Worlds* (TIFT/Munich); *Superior Donuts* (Coal Mine). Playwriting: *The Trial of William Shakespeare*; *Cringeworthy* (Siminovitch nomination); *This Hotel* (Dora nomination).

FILM/TV *Little Bird*, *The Porter*, *Rich Kid*, *Suits*, *Burden of Truth*, *Never Been Chris'd*, *Murdoch Mysteries*, *Cardinal*, *Flashpoint*.

ET CETERA This performance is dedicated to my late sister Kathryn. Love to Chloe Babette! Audition Coaching at alexpochgoldin.com



Stefano Massini
Author

Stefano Massini is a renowned novelist and playwright, the first Italian author to receive a Tony Award. He regularly contributes to the Italian newspaper *La Repubblica*, and he served as artistic consultant at Piccolo Teatro di Milano - Teatro d'Europa. His works, including *The Lehman Trilogy*, have been translated into 30 languages, and his plays have been performed in more theatres around the world than those of any other living Italian writer - produced as far as Iran and Korea, and staged by directors such as Luca Ronconi and Sam Mendes. Other select works: *Intractable Woman*, *Ladies Football Club* and *7 Minutes*. He won many Italian and foreign awards, including the Premio Vittorio Tondelli, the Premio Ubu, the Tony Award, the Drama Guild Award and the Outer Critics Circle Award. *The Lehman Trilogy* won the Selezione Campiello Prize, the Super Mondello Prize, the De Sica Prize, the Prix Médicis Essai and the Prix Meilleur Livre Étranger. He recently finished a multi-part play about the history of the atomic bomb, *Manhattan Project*. His rewrite based on Adolf Hitler's *Mein Kampf* will debut this year.

37TH ANNUAL
WINNIPEG
FRINGE
THEATRE
FESTIVAL

JULY 17-28

CALLING ALL VOLUNTEERS NEW AND RETURNING! Do you want to be part of making Fringe magic? Volunteering is a great way to get the inside experience of the festival - be the first to know about hot shows, cool venues and everything that makes Fringing fun! Apply at WINNIPEGFRINGE.COM. Presented by Royal MTC.

PHOTO BY LEIF NORMAN

Weekly Live Music

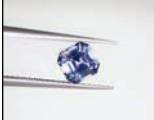
Kevin's Bistro



Visit us for a night out
that's worthy of a
standing ovation!



141 Bannatyne | kevinsbistro.ca | 204.221.5028
Make a reservation through OpenTable.

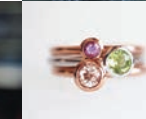


D I A M O N D G A L L E R Y

1735 CORYDON AVENUE

Locally owned and operated by the Malbrank family since 1992. Specializing in Canadian crafted custom designs and responsibly sourced gemstones. Shop online 24/7 or contact us to book your professional jewellery consultation.

DIAMOND-GALLERY.COM



THE LEHMAN TRILOGY



Ben Power

Stage Adaptation

Ben Power is a writer for theatre and the screen. For the last 12 years he has worked at the National Theatre as associate director and deputy artistic director and was responsible for the temporary theatre The Shed. Work for the screen includes *Munich: The Edge of War* and *The Hollow Crown* (BAFTA nominations for Best Single Drama and Best Mini-Series). Work for the stage includes adaptations of DH Lawrence's *Husbands & Sons*, Euripides' *Medea* and Ibsen's *Emperor & Galilean*, all for the National; *A Tender Thing* for the RSC and *Complicity's A Disappearing Number* (Olivier and Evening Standard Awards). He was associate director of Headlong where he adapted Pirandello's *Six Characters in Search of an Author* and Marlowe's *Faustus*. He is currently creating a television series for Working Title and is published by Faber & Faber.



Richard Greenblatt

Director

ROYAL MTC Director: *2 Pianos 4 Hands*.

OTHER THEATRE Directed 130+ productions across Canada/abroad, mostly original Canadian and plays by Shakespeare, Shaw, Chekhov and Shepard; several in Winnipeg including: *Seesaw*, *Kindness* (MTYP); *The League of Nathans* (PTE/WJT); *Pals* – performer/co-writer w/ Diane Flacks (WJT). Recent acting: *Athabasca* – co-writer w/ David S. Craig; *I Call myself Princess* by Jani Lauzon (Native Earth & Globe).

TV Many roles for CBC and others, including: *Homefires*, *Sidestreet* and *Sibs* – an

MOW co-written w/ Diane Flacks adapted from their play.

TRAINING/TEACHING Trained at RADA (London, UK). Taught acting/directing/play creation at many theatre schools including NTS, U of A, TMU (fmr. Ryerson) and GBC. Directed 20+ theatre school plays.

ET CETERA Co-writer/co-performer: *2 Pianos 4 Hands* (w/ Ted Dykstra); *Sibs*, *Care and Pals* (w/ Diane Flacks); *Athabasca* (w/ David S. Craig); solo shows: *Soft Pedaling* and *Letters from Lehrer*. Non-fiction works: *Text and Context*, *The Operative Word*; and *Two of the Best in the Neighbourhood*, an *Anecdotal History of 2 Pianos 4 Hands* – both published by Scirocco/JG Shillingford Press. Won many Dora and Chalmers Playwriting Awards.



Gillian Gallow

Set & Costume Designer

ROYAL MTC *Beautiful: The Carole King Musical* (with Segal), *Into the Woods*, *The Runner* (with Human Cargo), *Miss Bennet: Christmas at Pemberley*, *A Christmas Carol*, *Hand to God*, *Million Dollar Quartet*, *Seminar* (with Mirvish), *Hirsch*, *Venus in Fur*, *God of Carnage* (with VP), *One Flew Over the Cuckoo's Nest* (with TC).

OTHER THEATRE Selected: *Hadrian* and *Louis Riel* (COC); *Long Day's Journey Into Night*, *The Physicists*, *Hirsch*, *The Three Musketeers* (Stratford); *The Shadow of a Doubt*, *An Octoroon*, *The Importance of Being Earnest*, *The Russian Play* (Shaw); *Art*, *August: Osage County*, *Idomeneus*, *Orlando* (Soulpepper); *King Lear*, *Stuff Happens* (NAC); *Mahabharata* (Why Not Theatre & Shaw).

ET CETERA Awards: Gillian is the recipient of the 2021 Siminovitch Prize in Theatre, the 2018 Virginia and Myrtle Cooper Award in Costume Design and she has been awarded four Doras.

For a complete list of theatre abbreviations, please refer to legend on page 4

Address Unknown



TICKETS:
CALL 204.477.7478
OR VISIT WJT.CA

Starring **Amitai Kedar and Arne MacPherson**

A brotherly bond is torn apart in an era of heightened politics.

"A shockingly potent story that is well worth hearing, and one that reminds how easily politics, prejudice and circumstance destroy lives."

—The Guardian

WJT Winnipeg
Jewish
Theatre



APRIL 11-21 2024

IP BOUTIQUE
investmentpieces.com



FDJ
FRENCH DRESSING JEANS



749 St. Mary's Road | 204 594 0400
investment.pieces11@gmail.com

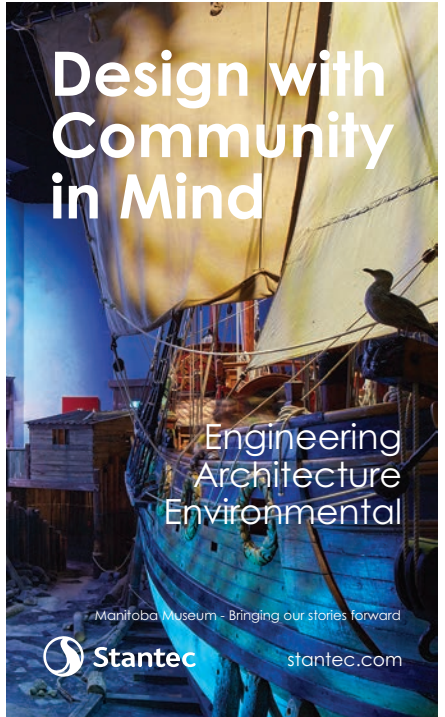
Design with Community in Mind

Engineering
Architecture
Environmental

Manitoba Museum - Bringing our stories forward

 **Stantec**

stantec.com



THE LEHMAN TRILOGY



Hugh Conacher

Lighting & Video Designer

ROYAL MTC (selected) Lighting & Video Designer: *The Mountaintop, Vietgone, Venus in Fur*. Video Designer: *Network*. Lighting Designer: *among men* (with TPM), *Beautiful: The Carole King Musical* (with Segal), *The Secret to Good Tea, Into the Woods, New, Orlando, Women of the Fur Trade, Fun Home, The Color Purple* (with Citadel), *Kill Me Now* (with NAC), *Seminar* (with Mirvish), *Dry Lips Oughta Move to Kapuskasing* and many other productions since the '80s.

OTHER THEATRE Hugh collaborates with choreographers, visual artists and dance and theatre companies worldwide.

ET CETERA Hugh enjoys working beyond the constraints of traditional lighting design using various forms of interactive media, video and photography. His photographic work resides in private collections and has been published worldwide. Hugh is a member of the Associated Designers of Canada and L'Association des professionnels des arts de la scène du Québec. www.pellucid.me



Ashley Au

Original Compositions & Sound Designer

ROYAL MTC *among men* (with TPM), *Burning Mom, Sexual Misconduct of the Middle Classes, Trouble in Mind, Orlando*. 2022/23 National Mentorship Program.

TRAINING B.Mus (Jazz Performance) Brandon University, School of Music.

ET CETERA Ashley Au (she/they) is a Winnipeg-based bassist, composer, sound

artist, arranger and queer creative. A multifaceted musician, Ashley specializes in the upright and electric basses – performing, touring and recording extensively. As a composer and sound artist, Ashley's work can be found behind various theatre and dance productions in the city. Current and past projects include work with Weakerthans frontman John K. Samson; composer/trumpeter Chuck Copanace; and Polaris Prize-nominated hip-hop outfit Super Duty Tough Work. Ashley is the Artistic Director of Cluster: New Music + Integrated Arts Festival and programs the Pride Winnipeg Festival. She recently scored her first opera, *Inertia* (libretto by Christene Brown), commissioned by Loose Tea Music Theatre (TO).

Jane Gooderham

Dialect Coach

ROYAL MTC First engagement.

OTHER THEATRE Stratford Festival (20 seasons); *The Lehman Trilogy, Maanomaa My Brother, Fairview, London Road, The Syringa Tree, Rock 'n' Roll* (CS); *Fall On Your Knees* (NAC/CS/Neptune/Grand); *Harry Potter and the Cursed Child, Cloud Nine, The Lord of the Rings, The Producers* (Mirvish); *War Horse, The Curious Incident of the Dog in the Night-Time* (RNT/Mirvish); *Matilda The Musical* (RSC/Mirvish); Shaw Festival; *Romeo and Juliet* (NAC); *Oroonoko, Chair* (Theatre for a New Audience, New York).

TV *Star Trek: Strange New Worlds* (Paramount); *Hudson & Rex; Gwen Shamblin: Starving for Salvation* (Lifetime); *Good Sam* (CBS); *Cross, Reacher* (Amazon); *Republic of Doyle* (CBC).

TRAINING/TEACHING Teaching: National Theatre School, Head of Voice; Birmingham Conservatory, Stratford Festival. Training: MA Voice, Royal Central School of Speech and Drama; Acting BA, Guildhall School of Music & Drama.

For a complete list of theatre abbreviations, please refer to legend on page 4



Real food from the land...

At Peasant Cookery we have a passion for transforming fresh ingredients into original and trend-forward cuisines. Our rustic, seasonally inspired menu, famous housemade charcuterie, combined with exceptional service and inviting bistro atmosphere are an experience not to be missed.



100-283 Bannatyne
204.989.7700

RARE EXQUISITE WORLDLY

WE'RE MAKING
EXOTIC TASTES
EASY TO FIND.




Distinctions
EXCEPTIONAL WINES & SPIRITS



Distinctions brings together some of the world's most exclusive wines and spirits. Whether you're a connoisseur or simply curious, you'll appreciate the care that goes into our hand-picked collection. Explore our rare selection and take home something priceless today.

GRANT PARK LIQUOR MART
1120 GRANT AVENUE

 **100 LIQUOR MART**
SERVING MANITOBA SINCE 1923

   [LiquorMarts.ca](https://www.LiquorMarts.ca) | **18+** ENJOY RESPONSIBLY

THE LEHMAN TRILOGY



Cora Matheson
Apprentice Director

ROYAL MTC First engagement.

OTHER THEATRE Actor: *Charlie: Son of Man* (Echo Productions); *Mercury Man* (Hamilton & Winnipeg Fringe); *The Duchess of Malfi* (Shakespeare BASH'd); *Dirty Rotten Scoundrels*, *High Fidelity* (Hart House Theatre); *A Midsummer Night's Dream*, *A Flea in Her Ear*, *The Penelopiad* (George Brown Theatre School). Director: *Speed Dating* (Alumnae Theatre).

FILM/TV *Holiday Hotline*, *Hannukah on Rye* (Hallmark); *The Spencer Sisters* (CTV); *Ponysitters Club* (Cineflix/Netflix).

TRAINING/TEACHING Graduate of Randolph Academy for the Performing Arts and George Brown Theatre School. Cora teaches acting at The Winnipeg Actors Academy and leads acting workshops for MTYP and The Travelling Stage.

ET CETERA Over the last two years Cora has travelled to remote communities in the Northwest Territories to facilitate arts education and direct theatrical performances in schools. Cora can't be more grateful to have had this opportunity to learn about directing at the professional level and hopes she, too, can direct a show such as *The Lehman Trilogy* one day.



Katriona Dunn
Assistant Lighting & Video Designer

ROYAL MTC Apprentice Lighting Designer: *The Mountaintop*.

OTHER THEATRE Assistant Set & Props Design: *Casey and Diana*, *Women of the Fur Trade* (Stratford). Assistant Costume

Design: *Murder on the Orient Express* (Vertigo Theatre); *Company* (MacEwan University). Co-design: *Pro Series II: Just Breathe*, *Okâwîmâwaskiy* (U of C). Design: *Wagonstage* (U of C). Costume Design: *Horse Girls* (U of C). Assistant Lighting & Projection Design: *Formations* (U of C).

TRAINING Graduate of University of Calgary's Drama program and Mentee through the ADC.

ET CETERA The services of Katriona Dunn were made possible through the Associated Designers of Canada Mentorship Program funded by the Canada Council for the Arts and Calgary Arts Development.



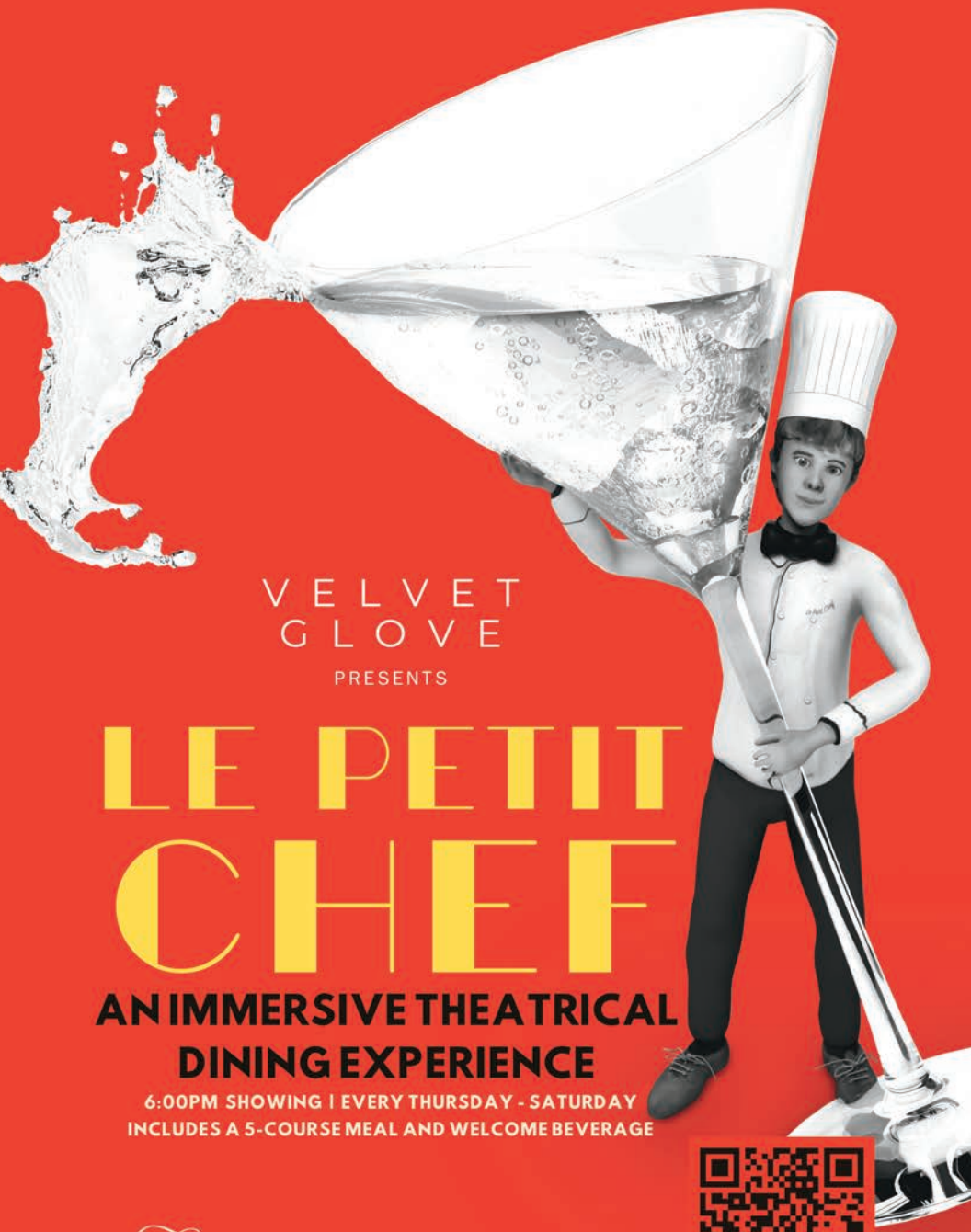
Anika Binding
Apprentice Lighting & Video Designer

ROYAL MTC Apprentice Lighting Designer: *The Mountaintop*. Assistant Lighting Designer: *among men* (with TPM).

OTHER THEATRE Lighting Designer: *From Up Here* (U of W). Costume Designer: *Stupid Fucking Bird* (U of W). Stage Management: *Scenes from Love and Information* (U of W). Assistant Lighting & Set Designer: *The Prom* (Dry Cold). Upcoming: Stage Management for *Something Rotten!* (MTYP); Lighting & Costume Design for *Miss Shakespeare* (WST).

TRAINING BA Hons. in Theatre and Film from the University of Winnipeg, with specializations in Design, Stage Management & Production, and Directing.

ET CETERA Anika would like to thank Winnipeg Arts Council and Creative Manitoba for this opportunity. She also thanks her family, friends and teachers at the University of Winnipeg for their endless support.



VELVET
GLOVE

PRESENTS

LE PETIT CHEF

**AN IMMERSIVE THEATRICAL
DINING EXPERIENCE**

6:00PM SHOWING | EVERY THURSDAY - SATURDAY
INCLUDES A 5-COURSE MEAL AND WELCOME BEVERAGE

Fairmont
WINNIPEG

SCAN TO LEARN MORE, VIEW MENU
AND PURCHASE TICKETS!



THE LEHMAN TRILOGY



Dustyn Wales
Stage Manager

ROYAL MTC *Yaga*.

OTHER THEATRE Over 100 productions across Canada including *Newsies*, *Mamma Mia!*, *The Sound of Music*, *Driving Miss Daisy*, *Kinky Boots*, *The Prom*, *Mary's Wedding* (Drayton); *Once* (Thousand Islands); *Revolutionary Women in Jazz*, *Billy Bishop Goes to War*, *Glengarry Glen Ross*, *Faith Healer*, *Travesties*, *Who's Afraid of Virginia Woolf?* (Soulpepper); *Into the Woods* (TiFT); *Blackout*, *Take the Moment*, *The Light in the Piazza*, *Craigslit Cantata* (Musical Stage); *You Dance* (National Ballet); *A Man A Fish* (Persephone); *Musical of Musicals* (Mirvish); *i think i can*, *Blue Planet* (YPT); *The Rocky Horror Show*, *Jesus Christ Superstar*, *Into the Woods*, *The Tempest* (Hart House); *Soldier On* (UK Toronto Tour); Pan Am Games. Upcoming: *Menopause the Musical 2* (Shaggypup); *Goblin:Macbeth* (Northan Industries).



Katie Schmidt
Assistant Stage Manager

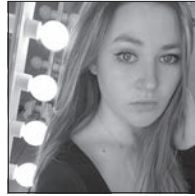
ROYAL MTC Assistant Stage Manager: *The Sound of Music*, *Into the Woods*, *The Runner*. Apprentice Stage Manager: *The Cottage*, *A Doll's House*, *Sense and Sensibility*. Apprentice Costumer: *Sarah Ballenden*.

OTHER THEATRE Stage Manager: *Snow White*, *Frozen River*, *Tiny Treasures* (MTYP); *The Magic Flute* (The Little Opera Company); *The Prom* (Dry Cold Productions). Assistant Stage Manager:

The Wizard of Oz (Rainbow); *Bad Parent*, *VOICE* (PTE). Apprentice Stage Manager: *Ghost Light* (PTE). Costumer: *Mary's Wedding* (TPM). Props and Set Coordinator: *Much Ado About Nothing*, *The Player King*, *The Winter's Tale*, *Hamlet*, *Timon of Athens*, *Romeo and Juliet* (SIR).

TRAINING University of Winnipeg Theatre and Film.

ET CETERA Thanks and love to Mom, Dad, Raya and Felix.



Samantha Sage
Apprentice Stage Manager

ROYAL MTC First engagement.

OTHER THEATRE *Glad to Be Here* (TBTR); *Space Girl* (PTE); *Antigone* (Sick + Twisted/AA Battery); *Much Ado About Nothing* (SIR); *Cet été qui chantait*, *Inédit* (Théâtre Cercle Molière).

TRAINING Graduate of the University of Winnipeg.

ET CETERA Enjoy the Show!

Peter Chapman is author of *THE LAST OF THE IMPERIOUS RICH: LEHMAN BROTHERS, 1844-2008*, a leading reference on the history of the Lehman family. ●

ENRICH YOUR EXPERIENCE!

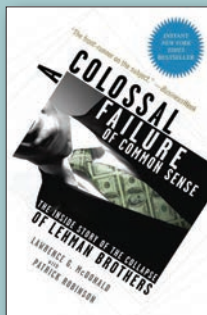
Do you want to delve deeper into the themes of the play? For every show we release an enrichment guide with help from experts and educators. This guide offers background context, resources to explore and discussion questions to keep the conversation going. Read them at royalmtc.ca/enrichmentguides.



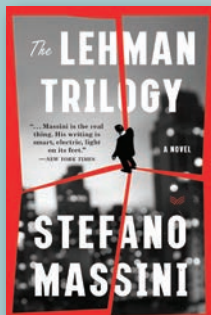
McNALLY
ROBINSON

Recommended Reading

inspired by *The Lehman Trilogy*



A Colossal Failure of Common Sense: The Inside Story of the Collapse of Lehman Brothers
by Lawrence G. McDonald, et al.



The Lehman Trilogy
by Stefano Massini



Trust
by Hernan Diaz



McNALLY ROBINSON BOOKSELLERS
1120 Grant Avenue · The Forks · mcnallyrobinson.com

WHEN YOU SUPPORT US, YOU SUPPORT OUR COMMUNITY





Have you heard about Rupert the Rhino or Patty the Piano? How could playwriting possibly be like marriage counselling on steroids? Do you wish you saw the designer's drawings of the set of *Clue*?

If any of that piqued your interest, then MTC's **Drama Club** is for you! **Drama Club** connects you with the up-close, behind-the-scenes, a little bit dramatic content that you've been looking for.

Joining is easy and gives you some exclusive benefits. All you have to do is convert your annual donation into monthly gifts or start donating monthly.

For as little as \$10 a month, you get:

- Two opportunities a year for a tour of our building (backstage included!).
- Monthly emails featuring props, costumes, upcoming artist interviews or legendary stories.
- Two special **Drama Club**-only events every year.

This year, members got to build tiny set pieces with the set designer of *Clue* and learned about how accents and dialect help build character with voice coach Tom Soares.

Convert your annual gift into monthly donations when you renew your subscription and become a member of our **Drama Club**. You'll receive all your regular benefits plus the exclusive perks of **Drama Club**.

For more information, contact Brendan M'Keen, Individual Giving Manager, at 204 954 6412 or bmckeen@royalmtc.ca.

But wait, what about Rupert the Rhino? Use this QR code to find out! ●





ROYAL MANITOBA THEATRE CENTRE AND THE MANITOBA BAR ASSOCIATION
PRESENT THE 31ST LAWYERS PLAY



**MUSIC & LYRICS BY
MARK HOLLMANN**
**BOOK & LYRICS BY
GREG KOTIS**

URINETOWN WAS PRODUCED ON BROADWAY IN SEPTEMBER, 2001
BY THE ARAGA GROUP AND DODGER THEATRICALS IN ASSOCIATION
WITH THEATERDREAMS, INC., AND LAUREN MITCHELL

DIRECTOR
Erin McGrath

CHOREOGRAPHER
Rebekah Jones

MUSIC DIRECTOR
Renate Rossol

MAY 7-11, 2024

TICKETS \$75-\$100
RoyalMTC.ca
204 942 6537

Playwright's Notes

BY DIANE FLACKS

Guilt came about as I was wrestling with this state of being that had paralyzed me after my divorce. In trying to understand it, I realized that my perspective: as a seemingly self-sacrificing mother who exploded her life with a mid-life crisis, was not well-represented in research or media. Divorcing women in media were either presented as “the evil other woman” or the one-who-was-betrayed, victim. And I wasn’t either of those and felt like there was a perspective to be examined. I researched, interviewed, and investigated this perspective and the origins and utility of guilt. In time, I realized the way through, both personally and artistically, was diving in.

I originally presented a rough, short version of this before Covid at the We’re Funny That Way comedy festival in Toronto, and the response of the audience encouraged me to keep going. During Covid, with the help of director Alisa Palmer, we continued developing the piece, and did a Zoom reading for Blake Brooker from One Yellow Rabbit in Calgary and for GCTC, with the support of Nightwood Theatre and Buddies in Bad Times Theatre. Blake described the feeling of doing a Zoom one-person show as performing into a black plastic garbage bag, and he is right. So, we were incredibly grateful to be invited to do a live work-in-progress performance at the High Performance Rodeo.

In the meantime, I was invited to present a few minutes of material at Tarragon Theatre’s big birthday bash. That marked the first time a live audience saw any of this new iteration of *Guilt*, and

it was a blast. The response of many in the audience was a whispered, “You’re telling my story”, which encouraged us all to keep going.

Thank you for being here for this deep dive into a complex, uncomfortable and highly human feeling. A state of being that most of us, especially parents, wrestle with in our lives. This exploration may not pull punches, but don’t worry, it’s accompanied by laughs - because how else do we get through anything? In this time where being together in a room is still a struggle and a risk, we are grateful to you, the audience, the show’s other actor, for opening yourselves up to imagine.

A word on solo shows: it’s a lotta work. And a privilege and a responsibility. This is my fifth. Every time I do one, I remember how difficult and rewarding they are, and every time, I say, “this is my last one”. And then a story that feels like it could only be told in this way presents itself. I’ve come to accept that, like in dreams, you are everyone in your solo show. Even if it’s not at all autobiographical. And it’s a way to use everything you have in your arsenal as an artist to connect in an intimate way with an audience so that we all feel less alone. It’s a contract - “trust me, we’re going surfing together. I’ll take care of you. Let’s go on this ride, because I think it will do us all good.”



GUILT: A LOVE STORY

SPECIAL THANKS

The Tarragon for being home. The Toronto Arts Council, The Ontario Arts Council, and especially the Canada Council for the Arts. Blake Brooker and the OYR team, Eric Coates from GCTC, Andrey Tarasiuk and Pleiades Theatre, Wei Qing Tan, Bruce McCulloch, Sunny Drake, Shoshana Sperling, Richard Greenblatt, Nightwood Theatre, Ari Weinberg, David Gale, Buddies in Bad Times Theatre, National Theatre School, Maggie Cassella, Kayleigh Mundy, Rabbi Aviva Goldberg, Julie Tepperman, Mai Amit for the art installation and Katie Ford from We're Funny That Way. Thank you to Monica Parker for the title, and

Kelly Thornton for the subtitle, and her always tremendous support. To Eda Holmes and Centaur for launching us into the East, and to Fanny Britt for her beautiful transliteration for surtitles.

Huge gratitude to Alisa Palmer, for the kindness, ferocity and the deepest, most fascinating well of talent, skill, wit and wisdom, and belief in me and in this project. Plus, all the laughs and friendship. It could not have happened without you. To the brilliant, vulnerable, wise design team and to the stage management pillars of strength.

Finally, to Tommie, for her faith and love. And to my remarkable boys, always. ●

Director's Notes

BY ALISA PALMER

I was thrilled when Diane approached me with the news that she was working on a new piece. Or rather, that a new piece was working on her. This is how important stories seem to emerge; like *The Truth*, they will out. *Guilt: A Love Story* is a work of fiction but is inspired by personal experience and infused with Diane's incredibly insightful and savvy observations of humanity. Over the years, as Diane and I worked to bring the story to fruition, our circle expanded to include the incredibly gifted creative team that has brought the production that you see today to life. Thank you to Mike Payette for his commitment to the piece and to the Tarragon for being such a warm and nurturing home for *Guilt's* world premiere. It's wonderful to be back and we look forward to sharing *Guilt* with audiences in Montreal at the

Centaur Theatre and in Winnipeg at the Royal Manitoba Theatre Centre.

In this era of heightened insecurity, when we are financially stressed, emotionally overwhelmed, and justifiably heartsick, we can respond by donning masks of invincibility. Or we can gather to look, listen, and share our struggles.

The courage to accept our mutual vulnerability is potentially transformative, even world-changing.

THANK YOU

Thank you to the Pedagogical Team and students of the English Section, National Theatre School of Canada.

Thanks to my wife, Ann-Marie, and our daughters, Lora and Isabel, for their love and kindness. ●

Classic Sangria

*“This is not a cry for help.
It’s a cry for Sangria.” - DIANE*



INGREDIENTS

- 1 lemon, sliced into rounds (seeds removed)
- 1 orange, sliced into rounds (seeds removed)
- 1 lime, sliced into rounds (seeds removed)
- 1 cup brandy, triple sec or gin
- 1 bottle dry red wine
- 1/3 cup orange juice, pulp-free
- 1/4 cup lemon juice, freshly squeezed
- 1/3 cup frozen lemonade concentrate
- Chopped fruits: strawberries, apples, oranges or other preferred fruit (add just before serving)
- 2 cups lemon-lime soda (add just before serving)

DIRECTIONS

1. In a large pitcher or punch bowl, combine all ingredients (except for lemon-lime soda and chopped fruits). Stir well to incorporate and chill in fridge overnight.
2. About an hour or two before serving, add desired amount of chopped fruit.
3. Right before serving, add the lemon-lime soda.
4. Reserve some chopped fruit in a dish as garnish, for guests to add into their drinks as they wish.

NOTE

Though chilling overnight results in the most complex flavours, you can chill sangria for a minimum of four hours. ●

SYNOPSIS - *Guilt: A Love Story* is a deep dive into a complex and highly human feeling. A state of being that most of us, especially parents, struggle with inelegantly. You can wrestle it to the ground, but guilt is the party guest who refuses to leave. Focusing on Diane Flacks' personal odyssey, *Guilt* shares the perspective of a self-sacrificing Jewish mother who becomes the instigator of a family's dissolution. Part stand-up, part confessional, *Guilt* takes us on a roller coaster ride through infidelity, divorce, forgiveness and ultimately love. Standing in the eye of the explosion, in which she is the bomb, Diane Flacks pulls no punches in this honest and often hilarious account of the human heart. ●

Jones & Company

— WINE MERCHANTS —



Shop Local, Globally.

1616 St. Mary's Road Winnipeg, Manitoba
204.948.WINE (9463) | Text a Somm: 204.400.0499
joneswines.com | wine@joneswines.com



Your seat awaits.

Will you consider a gift to Royal MTC in your will?
Is Royal MTC already named in your will?

**We'd love to honour you as a member of
the Royal MTC Founders' Circle**

For more information on Legacy Giving contact:
Brendan McKeen 204 954 6412 or bmckeen@royalmtc.ca

ROYAL
MTC
MANITOBA THEATRE CENTRE

Scan here for
more info



PRESENTS

A TARRAGON THEATRE PRODUCTION

Guilt: A Love Story

Written and performed by Diane Flacks

April 4 – 20, 2024

PREVIEW April 3

Director Alisa Palmer
Movement Coach Rebecca Harper
Set & Costume Designer Jung-Hye Kim
Lighting Designer Leigh Ann Vardy**
Associate Lighting Designer Aurora Torok**
Sound Designer Deanna H. Choi**
Associate Sound Designer Jacob Lin 林鴻恩**
Stage Manager Sandy Plunkett
Apprentice Stage Manager Angela Mae Bago

Guilt: A Love Story is performed without an intermission.

Produced by permission of the Playwright and Marquis Literary (Colin Rivers). www.MQlit.ca

Guilt: A Love Story received a World Premiere production by Tarragon Theatre (Toronto, ON) in association with Mything Inc. (Toronto, ON) in 2023. It was developed by Mything Inc, with support from the Canada Arts Council and Tarragon Theatre (Toronto, ON) and One Yellow Rabbit (Calgary, AB) which presented a limited run workshop production in 2022.

Diane Flacks is a member of the Playwright's Guild of Canada.

Production photography by Cylla von Tiedemann.

PRODUCTION SPONSOR

THE
ASPER
FOUNDATION

**Indicated designers on this production are represented by the Associated Designers of Canada, IATSE Local ADC659.

GUILT: A LOVE STORY



Diane Flacks

*Playwright &
Performer*

For Tarragon: *Theory of Relatives, By a Thread, Gravity Calling, Waiting Room, Sibs, Care*. Also a member of Tarragon's Playwrights Unit with Urjo Kareda and Andy McKim, and has appeared in and written for numerous Spring Arts Fairs. She appeared in the Canadian premiere tour of *Fall On Your Knees* (CS/NAC/Neptune/Grand, dir. Alisa Palmer); and in her third collaboration with Richard Greenblatt, *PALS* (WJT, dir. Jillian Keiley). She was the playwright and actor in *Unholy* (Nightwood, dir. Kelly Thornton). It was remounted three times, filmed, published and Dora Nominated. Diane appeared in the film *25 Questions for a Jewish Mother* (by Judy Gold, dir. Krista Jackson, WJT); and as Nathan in *Nathan the Wise* at Stratford. She was Dora nominated for her performance in *Body Politic* (Buddies, dir. Alisa Palmer). Her four solo shows *Myth Me, By A Thread, Random Acts* and *Bear With Me* (adapted from her book) have been remounted internationally. Diane was CBC radio's longtime national parenting columnist, and a feature columnist for *The Star* and the *Globe* among others. Diane writes/produces TV, including *Workin' Moms, Baroness von Sketch Show* and *Kids in the Hall* - she was nominated for an Emmy. Diane has two boys and does HIIT like a boss. dianeflacks.com



Alisa Palmer

Director

ROYAL MTC *Mrs. Warren's Profession; East of Berlin* (Tarragon production); *The Blonde, the Brunette and the Vengeful Redhead*. Co-playwright/Director: *The Attic, The Pearls and Three Fine Girls*.

OTHER THEATRE Selected: *Sibs, Mimi or A Poisoner's Comedy, The Children's Republic, Anything That Moves* (Tarragon); world premieres of *Fall On Your Knees Part One: Family Tree* and *Part Two: The Diary* (CS/NAC/Grand/Neptune/Vita Brevis Arts); *Hamlet-911* (Stratford). Eight years at Shaw Festival and directed shows across the country and beyond including *'Night Mother* and *Top Girls* - which was the subject of a doc. film (Soulpepper); *Girls on Top* (Fightingfish); *Cloud 9* (Mirvish); *The Body Politic* (Buddies).

ET CETERA Multiple Dora and Chalmers Awards, three-time Siminovitch finalist, Award of Excellence in the Arts from her home province of New Brunswick and a Harold Award for Independent Theatre (House of Knaapen). She is the Executive Artistic Director of the National Theatre School of Canada and Director of the Acting Program since 2013. She currently lives in Montreal with her wife and daughters. Her creative collaboration with Diane Flacks spans decades. What a privilege.

Bonaventure
TRAVEL INC.

T 204-488-6653 | TF 888-550-8998 | E info@bonaventuretravel.ca | bonaventuretravel.ca
428 Academy Road, Winnipeg, MB R3N 0C3 | | |

Professional. Local. Travel Services Exceeding Expectations.

Photo: @mattjosh
Joshua Shannard

GUILT: A LOVE STORY



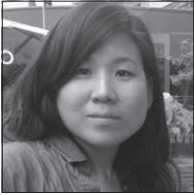
Rebecca Harper
Movement Coach

ROYAL MTC First engagement.

OTHER THEATRE Selected: Head of Movement at the National Theatre School of Canada and Movement Coach for graduating productions since 2014; *The Tashme Project* (Tashme Productions); *Richard III* (Metachroma); *The Importance of Being Earnest* (Regent's Park Theatre UK); *Elizabeth Rex*, *One Night, Humans*, *Adult Entertainment* (Tableau D'Hote Theatre); five seasons as Movement Coach at Stratford Festival.

FILM/TV Selected: *Love's Labour's Lost* (Stratford).

ET CETERA Bernard Amyot Teaching Award.



Jung-Hye Kim
Set & Costume Designer

ROYAL MTC First engagement.

OTHER THEATRE Selected: *If We Were Birds*, *After Akhmatova* (Tarragon); *Lady M* (1S1 Theatre); *The Chinese Lady* (Studio 180); *The Nightingale of A Thousand Songs* (Canadian Children's Opera Company); *Hamlet-911* (Stratford); *An Imm-Permanent Resident* (Why Not Theatre); *Hilot Means Healer* (Cahoots Theatre); *Now You See Her* (Quote Unquote Collective). Upcoming: *Mary Poppins* (Theatre Sheridan).

ET CETERA Dora Award for Outstanding Costume Design - *The Chinese Lady*.



Leigh Ann Vardy
Lighting Designer

ROYAL MTC *The Syringa Tree*.

OTHER THEATRE Selected: *What a Young Wife Ought to Know*, *The God That Comes* (Tarragon); *Rosencrantz & Guildenstern Are Dead* (Neptune/Mirvish); *Come From Away* (Rubinoff Prod. & Newfoundland and Labrador Govt. Arts and Culture Centre); *Richard II*, *Hamlet-911*, *The Neverending Story* (Stratford); *Fall On Your Knees* (CS); *February* (Opera on the Avalon); *Secret Life of a Mother* (Crow's Theatre/The Theatre Centre). Upcoming: *The Lehman Trilogy* (Belfry).

ET CETERA Recipient of seven Merritt Awards (NS Theatre) and nominated for a Siminovitch Prize. Leigh Ann lives in Halifax but leaves the maritimes for excellent projects. She is honoured to part of this monstrosly talented creative team.



Aurora Torok
Associate Lighting Designer

ROYAL MTC First engagement.

OTHER THEATRE Selected: *English* (Soulpepper/Segal); *Counter Offense* (Teesri Duniya Theatre); *Sky Dancers* (A'no:wara Dance Theatre); *Celestial Bodies* (YPT/Geordie Productions). Upcoming: *Dominoes at the Crossroads* (Infinitheatre).

ET CETERA Thanks to my partner and family for all your support!



Proud to support
Pimootayowin
Creators Circle.

We are working together with **Royal Manitoba Theatre Centre**.
It's just one way we are helping to open doors for a more inclusive
and sustainable tomorrow.

td.com



® The TD logo and other TD trade-marks are the property of The Toronto-Dominion Bank. M05636 (1019)

THE ASPER FOUNDATION

Proud to be a sponsor for the Royal
Manitoba Theatre Centre's production of
Guilt: A Love Story.

*"I regard the theatre as the greatest of all art forms, the
most immediate way in which a human being can share with
another the sense of what it is to be a human being."*

- Oscar Wilde -

www.asperfoundation.com

GUILT: A LOVE STORY



Deanna H. Choi
Sound Designer

ROYAL MTC *Let's Run Away* (reWork Productions).

OTHER THEATRE Selected: *Cockroach, Light, Three Women of Swatow* (Tarragon); *A Wrinkle in Time* (Stratford); *The Darkest Dark* (YPT); *Appropriate* (Coal Mine); *Beautiful: The Carole King Musical* (Arts Club); *Things I Know to Be True* (Company Theatre/Mirvish); *Rosencrantz & Guildenstern Are Dead* (Mirvish/Neptune); *The Importance of Being Earnest* (Citadel); *Love You Wrong Time* tour (Nightwood/Bad Muse Collective).

FILM/TV Selected: *Gray* (Paramount/Lionsgate); *Relax, I'm from the Future* (Universal/Wango); *The Nature of Things* (CBC).

ET CETERA Recipient of two Dora Awards, a Pauline McGibbon Award and a SOCAN Foundation Award. Nominated for two Merritts, a Louis Applebaum Award and a Canadian Screen Music Award.
splitbrainsound.com



Jacob Lin 林鴻恩
Associate Sound Designer

ROYAL MTC First engagement.

OTHER THEATRE Selected: *Post-Democracy, The Hooves Belonged to The Deer, Withrow Park* (Tarragon); *It's a Wonderful Life* (YPT); *Heroes of the Fourth Turning* (Howland Company/Crow's Theatre); *otîhêw* (Shakespeare in Action); *Prodigal* (Howland Company/Crow's Theatre); *Okay, you can stop now*

/ X and da spirit (Theatre Passe Muraille); *Bengal Tiger at the Baghdad Zoo* (Crow's Theatre); *Cast Iron* (Factory). Upcoming: *The Wrong Bashir* (Crow's Theatre); *The House That Will Not Stand* (Shaw); *Doubt* (Thousand Islands Playhouse).



Sandy Plunkett
Stage Manager

ROYAL MTC First engagement.

OTHER THEATRE Selected: *Withrow Park, Post-Democracy, Orphan Song, Bunny, The Circle, The Trouble with Mr. Adams* (Tarragon); *The Donnelly Trilogy, The Drawer Boy, Berlin Blues, Ipperwash* (Blyth); *Sir John A: Acts of Gentrified Ojibway Rebellion* (Globe Theatre); *New* (Necessary Angel); *The Fish Eyes Trilogy, Boys with Cars* (Nightswimming); *The Flood Thereafter* (CS); *Dividing Lines, Madre* (Aluna Theatre); *Public Servant, Weather the Weather, The Story* (Theatre Columbus/Common Boots); *Gladstone Variations, Yichud* (Seclusion) (Convergence); *The Silicone Diaries* (Buddies in Bad Times); and seven summers with *Dream in High Park*. Upcoming: *The Blyth Festival*.

ET CETERA Sandy is the great-grandson of Morley Plunkett of the almost-forgotten WW1 Canadian Vaudeville Troupe, *The Dumbells*.

Great theatre
lives here.

BMO



We are pleased to support the **Royal Manitoba Theatre Centre** and the artists who have been captivating audiences with exciting, innovative, and entertaining productions.

BMO is proud to be the 2023/24 **Tom Hendry Warehouse** Season Sponsor.



Angela Mae Bago

Apprentice Stage
Manager

ROYAL MTC First engagement.

OTHER THEATRE Selected: *Prison Dancer The Musical* (NAC); *Canoe* (Unsettled Scores); *Alice in Wonderland, Salt-Water Moon* (Guild Festival Theatre); *Baskerville: A Sherlock Holmes Mystery* (Thousand Islands Playhouse); *The Seagull, Draw Me Close* (Soulpepper); *Fifteen Dogs* (Crow's Theatre); *Carmen* (COC); *Little Women* (Stratford). Upcoming: The Blyth Festival.

ET CETERA Angela Mae Bago is a first generation Filipino-Canadian woman. She has been very fortunate to come across this amazing cast and crew and wishes them all the best.

The Asper Foundation

Production Sponsor

Israel Asper, O.C., O.M., Q.C., L.L.D. (1932–2003) and Babs Asper (1933–2011) believed that philanthropy is a driving force behind positive change in people's quality of life. For this reason, they formed The Asper Foundation in Winnipeg in 1983 to build upon the Asper family's philanthropic objectives. Inspired by a deep commitment to impactful philanthropy, the Foundation develops major projects and provides support to the Jewish Community and broader community in areas of culture, education, community development, and human rights on a local, national and international scale. In particular, the Foundation strives to improve the quality of life in Winnipeg, therefore much of the focus of this philanthropy is directed to the general Winnipeg community. ●

TARRAGON THEATRE

Tarragon Theatre is a creation and playwrights' theatre. We develop, produce and present works that investigate artistic form, which may incorporate non-traditional practices and methods of storytelling, and often integrating other performance disciplines such as movement, music or non-text based performance - all toward creating enriching and provocative theatre experiences for the artist and audience. Our philosophy is to offer an environment that fosters artistic discourse within the ecology of Canadian theatre, new play development and dramaturgy practice. We open our doors to celebrate and learn from the scope of voices that make up our country and the various artistic practices that resonate within them. To that end, Tarragon is equally a hub for creation and development as it is a production company, with the ultimate goal of inviting a meaningful experience for our artists to thrive and bridge their ideas from concept to realization.

Welcoming artists, audiences and everyone to Canada's Neighbourhood Theatre.

tarragontheatre.com

NOT ALL THAT GLITTERS IS GOLD.

SOMETIMES, IT'S GREEN.



GFL Environmental is proud to support the Royal Manitoba Theatre Centre and the Arts. Our diverse service offerings include solid waste management, recycling services, and hazardous waste collection.

Green Today. Green For Life. | gflenv.com



SUPPORTERS

Many thanks to our donors
who made a gift between
Dec 1, 2022 and Feb 23, 2024

DIRECTOR'S CIRCLE

\$10,000+

Gail Asper, OC, OM, LLD* & Michael Paterson
Deborah Gray
Johnston Group Inc.
June & Bob Jackson Memorial Fund for the Performing Arts – The Winnipeg Foundation
Ken & Sharon Mould
Ross & Allana Robinson, Robinson Family Foundation Fund – The Winnipeg Foundation
Todd & Kellie Tanchak

\$6,500-9,999

Houston Family of Bradwardine Fund – The Winnipeg Foundation
Ted & Ruth Northam
Mr. Leslie Taylor
Dr. Marcel Van Woensel

\$4,000-6,499

Pauline Braun – in memory of Duane Braun†
David Christianson & Vera Steinberger
Susan Glass & Arni Thorsteinson
Rita Gunn§ & Gregory Mason
Camilla Holland† & Colin Viebrock†
Diane & Dave Johnston
Hildegard Loewen
Elizabeth Marr & Nick Slonosky
Gerry & Barb Price
Hartley & Heather Richardson
The Jim & Janice Tennant Foundation
Denise Waldman

\$2,000-3,999

Dr. J Baluta & Ms. O. Kandia
David & Lianne Carefoot
David* & Barb Christie
Nancy Cipryk
Heather Clarke
Gerry* & Chris Couture
Kerry Dangerfield**
Ben & Shari Diamond
Dr. Lawrence & Ms. Brenda Ellerby
Tony* & Jennifer Fletcher†
Linda Hamilton & Grange Morrow†
Sharon Hamilton†

Derek & Mary Johansson
Myron Klysh
Dr. P. Kmet & Mr. B. Roslycky
Donna & Dave* Lalama
Katrina Lee-Kwen & Jeff Neufeld
Brendan M*Keen**
Leigh Murphy – in memory of Liam Murphy†
Dr. Harold Nyhof & Ms. Jo-Anne Lutz
Francis Pollard
Drs. Bill Pope & Elizabeth Tippet
Pope Fund – The Winnipeg Foundation
Sanford & Deborah Riley
Bill & Laurie* Speers
Maitland & Pat Sundmark
Kelly Thornton† & Joseph Seras-Gubert†
Jeremy Trickett & Brandon Barnes Trickett†
Helga Van Iderstine
Scott & Sonya Wright Fund
2 Anonymous

\$1,200-1,999

Edward* & Jaime Acuna†
Craig McIntosh & Lorraine Beck Fund
Todd Bourcier
Sheldon & Penny Bowles
Doneta Brotchie, CM* & Harry Brotchie†
Chambers Family†
Haderra & Mark Chisick
Jan & Kevin Coates†
Hugh Conacher†
Corinne Ratuski & Brad Favel†
Sylvia Flam†
Katherine Fox**
Susan* & Ab Freig†
John* & Nicola Guttormson†
Barbara Hamilton
Gregg & Mary Hanson
Vivian Hilder-Skward & David Skward – in memory of Mike Skward†
Shawn Hughes & Bruno Koehn†
Katie Inverarity††
Danielle Jobb & Brendan Roddy
Lisa Johnston†
Hon. William Johnston
Serena Helen Kraayeveld Fund – The Winnipeg Foundation
David* & Ellen Kroft†
J. Lamothe†
Rick Lee & Laurie Shapiro
Peter & Karen Leipsic
Andrea Lochhead*
Gail Loewen
Logan Family Fund
Teresa Lopata & Bruce Wagg

Reginald & Judy Low
Dr. Douglas MacEwan
Mark & Gloria Mancini†
Gerard Matte & Lydia Surasky-Matte
Jim* & Penny McLandress†
Melissa Novocosky**
Wayne & Linda Paquin
Damian Perron
K. Heather Power & Harold Klause†
Jocelyne Prefontaine**
Lawrence Prout* & Lisa Gardewine†
Margaret Redmond* & Greg Gillis†
Nancy & Loren* Remillard
Sudhir Sandhu**
Ken & Susan* Skinner†
Donald Smith†
Kevin Hines & Shelly Smith-Hines†
Joan Stephens – in memory of Annice Stephens†
Sasha & Josh Thiem†
Geeta* & Michael Tucker†
Vicki Verville†
Grant & Trish Wainikka
Winnipeg Theatre Awards
Rick & Claire* Workman
Dr. & Mrs. James & Kim Zacharias
Nicole Zajac†
2 Anonymous

COMPANY CIRCLE

\$600-1,199

Robert & Ina Abra Family Fund – The Winnipeg Foundation
Margaret Astwood
Peter Attwood
Janet & Marcel Belanger
Ryan Bernier
Bruce & Shelley Bertrand-Meadows
Cathie & Brian Bowerman
Pam & Andrew Cooke
D. J. Cowan
Verna Danylchuk
J. Davidson†
Emeric & Karen Duha
Helene Dyck
Neil & Sherry Fast
Felicia & Trevor Frost
Brad & Jenn Gesell
Tyler Gompf
Charles Henaire
Marilyn & Helios Hernandez
N & L Holliday
Sylvia Jansen
Gerald Jewers
JWTAM Medical Corporation
Peter Kingsley, KC†

*Current Royal MTC Board of Trustees/Advisory Board members †Current Royal MTC staff **Monthly Donors/Drama Club †Fondly Remembered

Congrats



on 125 years!

Royal MTC is proud to work with IATSE
Local 63 members who work behind-the-
scenes building and running the show!

ROYAL
MTC
MANITOBA THEATRE CENTRE



WE TRIED

We really did. We tried to photograph a pint of our refreshing, award-winning beer but everytime we turned our heads, it was gone.

It's just that good.

You might have better luck. Pick some up in the lobby, your favourite beer store, Liquor Marts and in our very own taproom.

330-830 King Edward Street
torquebrewing.beer



SUPPORTERS

The Honourable Guy J. Kroft & Hester Kroft*
 Ian & Nicki LeGrand†
 Shirley Liba
 Tim Preston & Dave Ling
 Linda & Ray Loewen
 Brian & Christie Lysack†
 Peter & Maureen Macdonald
 Garry Markham
 John & Natalie Mayba
 Carol & Barry[§] McArton
 Campbell & Lorraine McIntyre
 Terri & Jim Mc Kerchar*
 Ron McKinnon & Peggy Barker†
 Erin Meyer
 Carolyn Garlich & Peter Miller Gift Fund
 Brendan Mitchell
 Marika Nerbas
 Vivienne Nickerson
 Tracey Novak
 Richard & Bonnie Olfert
 Ivan & Cathy Oresnik†
 Cam & Carole Osler
 Pierre Ouellet
 Donna Plant
 Lousie & Ruth
 Iris Reimer
 David & Joan Rew
 Henriette Ricou & Jure Manfreda
 Debbie Roy
 Edith & Emile Samuels
 Barbara Scheuneman
 Renate & Bill Schulz
 In memory of Sybil Shack for the benefit of MTC - Jewish Foundation of Manitoba
 Carol & Ron Slater Fund - Jewish Foundation of Manitoba
 Deborah Spracklin
 Karen Stach
 Scott Stewart
 Lorne Sunley
 Susan Taylor
 Dr. Peter Triggs*
 Faye Warren
 Murray & Nancy Wiegand
 Margaret Wollner†
 Dr. Dorothy Y. Young
 5 Anonymous

\$250-599

Pat & Darrell Adams*
 Dr. Liz Adkins
 Glen Agar & Pam Reimer
 Dawn Andersen
 Jay & Judy Anderson
 Elizabeth B. Armytage Fund - The Winnipeg Foundation

Jennifer & Scott Ash
 Brenna Bacchus*
 Peter Bagot
 Zaz Bajon & Patricia Hunter
 Glenn & Norma Baldwin
 Olga & Ivan Banias
 Dr. Corinne Barrett DeWiele & V. Michael DeWiele
 Kathrine Basarab
 Dianne J. Beaven
 Larry Beeston & Anna Sikora
 Terri & Morley Bernstein
 Bruce & Joyce Berry
 Susan & Edwin Bethune
 Helga & Gerhard Bock
 Lilian Bonin & Daniel P Levin
 John & Marilyn Bourbonnais
 Dr. Elizabeth Boustcha
 The Hon. Patricia Bovey
 Ron & Joan Boyd*
 M. Braid
 Kris & Ruth Breckman
 Billy Brodovsky & Libby Yager*
 Sheila & David Brodovsky
 Brian Brown
 Ellen & George Bruce
 Donna Byrne
 Colleen Cariou & Ron Maier
 A R Carr
 Brenlee Carrington Trepel KC & Brent Trepel
 Leesa Carter & Colin Morrison
 Cheryl Chaban
 Rosemary Chapman
 Gertie Chipka
 Roberta Christianson
 Nancy Chuback
 Ken Clark & Pamela Lockman
 Agnes & John K. Collins
 Josie Cosyns
 Jim & Gwen Court
 Christopher Courtney
 Robert Coutts*
 Matthew Cutler & Dr. Avery Miller
 J. V. Dale
 Werner & Judy Danchura
 Doug De Graff
 Andre & Diane de Rocquigny
 Rita Dornn
 Sharron & Joel Dudeck
 Craig & Claudette Dunn
 H. Dyck
 Glen* & Joan Dyrda
 Michael Easton
 Robert & Florence Eastwood
 Greg Edmond & Irene Groot-Koerkamp
 Ruth & Ernest Epp
 Fran Falzarano

Frances Falzarano
 Kate Hodgert-Fennell*
 Pat & Doug Finkbeiner
 Gayle Fischer
 Maureen Flaherty & Fred Beckwith
 Andrea Forbes-Avila*
 Elroy Friesen
 Pamela & Kevin Friesen
 Adrian Frost & Kerra Mruss
 Colleen & Dan Furlan*
 Daniel Gagnon
 Lynne & Lindsay Gauld*
 Trish Gehle-Preston
 Denise & Ron George
 Heather Gillander
 Serky & Ben Goldberg
 Jan Gordon*
 Kayla Gordon & Art Maister
 Blair & Amanda Graham
 L. Graham
 M. Gray
 Graham Hiagh
 Thomas & Nadia Hall
 Noella & Patrick† Hanan*
 Doug & Sylvia Hannah
 Brian & Dawn Hanson - in memory of our Daughter, Kristin Dawn Hanson
 Linda Harlos & Adrian Wildsmith
 Kathryn & Wayne Harrison
 Valerie & Robert Hazelton
 Frank & Sue Hechter*
 Marilyn Hendzel*
 Rodney Hick & Tracey Jackson
 Judith & Eric Hinton
 Ted & Cathy Hlynsky
 Lenore & John Hodge
 Betty Hoffmann
 Jennie Hogan
 Michael & Crystal Hollas*
 Ken Houssin*
 Lorne Hurst & Elly Hoogterp
 Dan & Karen Ilchyna
 Crystal & Gunter Jochum
 Marilyn & Sheldon Joyal
 Joanne & Rod Kamins
 Sheryl Kapitz & Aaron London*
 Sandy & Joan Kellett
 Joan Kennedy
 Adam & Tara Klaponski
 Betty Klassen
 Julie Ann Kniskern
 Donna Korban & Family
 Denise & David Koss
 Carol Campbell & Andy Krentz
 Howard & Jane Kroeger
 Randie & Jan Kushnier
 Laurie Lam & Larry Desrochers
 Cheryl Langer
 Barbara Latocki

*Current Royal MTC Board of Trustees/Advisory Board members †Current Royal MTC staff *Monthly Donors/Drama Club §Fondly Remembered



THE
Free Press

**PROUD
SUPPORTER**
OF OUR **COMMUNITIES**

To subscribe call
204-697-7001
or visit
[winnipegfreepress.com/
subscribe](http://winnipegfreepress.com/subscribe)

SUPPORTERS

Desiree Lavallee**
 John & Heather Lea
 Bob Leggett
 Richard Leipsic & Kerrie Halprin
 John & Roberta Lewis
 Sarah, Chris & Lori Luby
 Pat & Jim Ludwig
 Brent Schacter & Sora Ludwig
 Tom Lussier
 MacDonald/Cageorge Fund - The
 Winnipeg Foundation
 Jim MacGregor & Christine Halma
 Judith Manning
 John & Helen Marakovits
 Liz Martin*
 Cheryl & Eric Matheson
 Monique Marynard
 Barbara McCandless
 Jim & Lynne McClelland
 Marlene & Ian McKay
 John & Carolynne McLure Fund -
 The Winnipeg Foundation
 Donald G. McNabb
 Melissa McRae
 Barb Melnychuk
 Albert & Judith Metcalfe*
 Susie Miclash
 Irene Miller & the late Claire Miller
 Catherine Lambeth & Grant Mitchell
 Sharon & Michael Moffatt
 Dr. Catherine Moltzan & Paul Brault
 Tom & Susan Mooney
 Sagan Morrow*
 Cindy Mostow
 Suzanne & Kenneth Munroe
 Brad Nance
 D. & G. Nytepchuk
 Joanne Olchowecki
 Norma Anne Padilla
 Jean-Pierre Parenty & Michelle Smith
 Linda Pashniuk
 Peter & Anita Pelech
 Maryam & Izzy Peltz Fund - Jewish
 Foundation of Manitoba
 Bonnie Penno*
 Linda & Rob Pettit
 Rick Pinchin
 Jocelyn Pitsch
 Ian & Ann-Margret Plummer
 Leonard & Ruth Podheiser & The
 Podheiser Family Foundation
 Beth Pollard
 Maureen Prendiville & Paul Jensen
 Estate of Doris Quinn
 Jeremy Rampton
 Carole Rankin*
 Lucas Redekop
 Nalini Reddy*
 Fay Reich

Lorraine & Ernest Reinfort
 Mr. & Mrs. William Reynolds
 Kevin Kuryk & Riva Richard
 Joan Richardson
 Jean Riggall*
 Andrea & Michael Robertson*
 Deborah & Neil Rostkowski
 Paul & Cathy Samyn
 Onnolee Scharf*
 Roland Schneider
 Trudy Schroeder
 Harald & Vicki Schulz
 Faye Scott
 Jewish Foundation of Manitoba - in
 memory of Sybil Shack for the
 benefit of MTC
 Sharon Shaydak
 Marsha Sheppard
 Blake Shiaro
 Cheryl & Gordon Siemens
 Ms. Judy Nichol & Dr. Jim Skinner
 Lillian Smith
 Mark C. Smith & Sabrina & Siena
 Smith
 Al* & Virginia Snyder
 Maddi Soubry
 Christine Soubry
 Peter & Geri Spencer
 Anthony Steffes & David Viggars
 Jodee Stewart
 Lisa Stiver
 Jonathan Strauss
 Eleanor Suderman
 Mary Ann Supleve
 Ray & Fenella Temmerman
 Leah R. Janzen & Ian R. Thomson
 Malcolm & Shirley Tinsley
 Douglas & Deanna Tkach
 Jen & Kevin Tomanek
 Gord & Lorena Trann
 Brad Baydock & Wendy Tretiak
 Dr. Stephen Tritt & Dr. Sharon
 Goszer Tritt
 Cathy & Terry Tully
 Grant Tweed
 Dr. Kristel van Ineveld
 Dr. & Mrs. M. B. Vodrey
 Gwen & Helmut Waedt
 Jerry & Karen Wake
 Stirling Walkes
 Deanna Waters
 Tamara & John Wells
 Michael & Lydia West
 John T. & Justina Wiens
 Lionel & Lorraine Wiens
 Kathleen Gough & Tim Wildman
 Catherine Wilkie
 Reed & Arla Winstone
 Deborah A. Wolfe

Adele & Arthur Wortzman
 Margaret & Paul Wright
 Allana & Eden Wyness*
 A Young
 Olia & Roman Zubach
 Anonymous*
 17 Anonymous

\$150-249

Robert & Patricia Adamson
 Lynne M Arnason
 Dennis & Elaine Schultz
 Margaret Askeland
 Nadine Audet*
 Rose Aziman
 Ian & Carolyn Backus
 Richard & Nancy Ball
 Earl & Cheryl Barish
 Richard & Josie Bartlinski
 Karen & John Bate
 James & Dawn-Lynne Bedford
 Andrea Bellhouse
 Susan & George Benias
 Trish Bergal
 Trust Beta
 Don & Diane Bewell
 Val & Blair Bingham
 Joan Blight
 David & Pamela Bolton
 Bruce & Karen Boyd
 Patricia Bozyk
 Janine Brémault Bamford
 Jackie & Steve Broda-Milian
 Gerald R. Brown
 Carol Budnick
 John Burrows
 Cheryl Butler
 L. K. Butler
 Corinne Campbell
 Laura Campbell
 Jody Chalmers & Monique Perro*
 Doug & Monica Chapman
 Lawrie & Bea Cherniack
 Duane Cheskey & Georgia Kerr
 Shelley Chochinov
 Dr. T. I. Choptiany
 Katherine Cobor
 Diane Connelly
 David & Kathy Connor
 Sarah Corley
 R. Lynn Craton
 Drs. Kristen Creek & Josh Manusow
 Margaret Cuddy
 Tracy Dahl, CM
 Georges Dampousse
 Linda Daniels
 Chris Darazsi*
 Bev & Allan Doern*
 Heather Domke

*Current Royal MTC Board of Trustees/Advisory Board members

*Current Royal MTC staff

*Monthly Donors/Drama Club

Lottery, Sports and Casino

All your favourite games
are at PlayNow.com.



**PLAY
NOW**
Bet on Manitoba

SUPPORTERS

Sheila Domke & Stephen Ross
Tom Dooley
Rob Dryden
John & Ada Ducas
SJ Duncan Medical - in memory of
Myrtle Bird
Roberta Dyck
Tim Edginton & Joan Hardy
John Edwards & Wendy Stelco
John & Marilyn Ekins
Charlotte Enns & Greg Evans
Ken & Lesley Enns
Anthony Esposito
Jemara Fay*
Marion Fellingner
Linda Ferguson
The Ferriers
Nelma Fetterman
Patricia Fitzpatrick
Nancy Flintoft & John McWilliams
Lawrence Foster*
Donna Frame*
Christine M Freeman
Paul Daeninck & Monica Furer
Gloria & Rick Gallant
Helen Garrod
Patti & Rick Gilhuly
Barbara & David Goldenberg
John & Marcia Gordon
Jennifer Graham

Abigail Grieder
Dr. Darrell Grymonpre
Sandra Guadagni
Derryl & Linda Hall
Joan Hanton*
Don Hardy
Joanne Harris
Shellie & Grant Hatch*
Kyle Hendin & Breanne Korban
Karen Herd
Mary & David Hickling
Rob & Jen Hochkiewicz*
Mary Hodge
Vicki Hooke
Keith & Karen Horn
Colleen Hrabitt**
Lisa Hunt & Hugh Wichenko*
Jean Hyrich
G. C. Irwin-Kilfoyle
Stu & Alice Iverson
Heather D. Janik
Dave & Lesia Johns
Robert & Karen Johnston
Tannis & Owen Johnston
Michael Joyal, esq.*
J.H. Kaminsky
Lydia Kandia
Sherry Kaniuga*
Sue & Richard Kathler
Don & Sheila Katz

Gail Keeley
Penny & Brian Kelly
Howard Kideckel
Vernon & Roselin Klassen
John & Kathryn Knowles
Ms. Julie Koehn
Peter Kohut - in memory of my
Spouse Valerie Kohut
Janice & Richard Kostelnyk
Lesley Koven & Eric Thomas
Lorraine Kraichy*
Robert Lafond
Teena Laird
Lisa & Ted Landrum
Doug Larcombe
Bryen Lebar & Patricia Sauder*
Ellen & Stewart Leibl
Saul & Kathy Leibl
Tim & Kate Letkemann*
Carol & Clifford Levi
Stan & Susan Lipnowski
Dr. Karen Lischka
Judy & Eric Lister
John & Joy Loewen*
Israel & Maylene Ludwig
Carole Lupkowski
Carol Ann Lussier - in memory of
Joanne
Laura & John MacDonald*
Wally MacMartin



SUPPORTERS

Lynne Martin[†] - in memory of Omar Martin
 Agatha Massey
 Linda Matheson
 Judy McCleary
 Barry McNabb
 Catarina Mello Schultz[†]
 Loretta Merriam
 Constantina Metaxas
 Jim & Karren Middagh
 Gail Mildren - in memory of Walter A. Mildren
 Celoris Miller
 Cressida Mills
 Adriana Mingo
 Dr. & Mrs. M. Mollot
 Marc Monnin & Donna Miller
 Allison Moore[†]
 Marlene Mortimer
 Susan Munroe
 B. Nagamori
 Rhea Nelken
 Andrea Neufeld
 Leslie Nichol
 Valerie Nielsen
 Tom Nowicki
 Irene Onuch
 R. Ooto
 Doris Mae Oulton & Cam Mackie[§]
 Paulette Pappel
 Sonjia Pasiechnik
 Sandra Paterson-Greene & Russ Greene
 Craig Patterson[†]
 Myron Pawlowsky & Susan Boulter
 Jo-Anne & Harvey Peltz
 Harold & Ingrid Peters Fransen
 Donald & Elaine Peters
 Denise Plett
 Carolyn Porhownik
 Nancy & Brett Porth
 M. Lois Powne
 Arlene Prasek
 Tammy Rabkin
 Vivian E. Rachlis
 Roberta & Rick Rackal
 John & Marilyn Rae
 Dr. R. & Audrey Ramchandar
 Jim & Kathy Ranick[†]
 Linda Ratynski
 Ted & Marilyn Redekop
 Dr. Martin Reed & Joy Cooper
 Cheryl Reid
 Joy Reimer
 Shelley Rennie
 Marilyn Robbins
 Nicole Robidoux
 Cindy Rodych

Gail MacAulay & Kevin Rollason
 Pat & Michelle Rowan
 Michael T. Ruta
 Barbara A Ryan
 David & Tammie Sainsbury
 Rodrigo Sanches Cunha[†]
 Heather Sandilands[†]
 Terry Sargeant & Margaret Haney
 Carol Scurfield
 Greg Sexsmith & Joni Lavender Sexsmith[†]
 D. L. & C. Sexton
 Kumar Sharma & Angelina DiSanto
 Sydney Shore & Wayne Sharpe
 Tania Sigurdson
 Dr. Elinor Simons
 Edith Simpson
 Linda Simpson
 Meera & Sach Sinha
 Sandra & Cliff Skrabek
 Lynne Skromeda
 Earl Slimmon
 Muriel Smith
 Jon Sorokowski
 Jacqueline St. Hill
 Maria Steeds
 E. Steeg
 Darlene Stepanik
 Kim Stephens
 Heidi Struck[†]
 Shirley & Tom Strutt
 Anita Tait
 Shelley & Jeff Tallin
 Mala Teeluck[†]
 Karen Tereck
 Elaine Toms
 Greg Tottle
 Marilyn Trepel
 Elaine Tresoor
 Eric Turner[†]
 Chris Turyk & Bryce Weedmark[†]
 Robert Tyler & Laurel Hammond-Tyler
 Jan Van Aertselaer
 Brent & Jocelyn VanKoughnet
 Nancy Vincent
 Judy Wakefield
 Dorothy Walker
 J. & A. Walli
 Jane & Don Walters[†]
 Paul & Laura Walton[†]
 Robert & Sherilyn Ward
 John & Marjorie Warkentin
 Peter & Joan Washchyshyn
 Lois & Henry Wedel
 Hymie & Shaaron Weinstein
 Mary Agnes Welch[†]
 Alys-Lynne & Steve West
 Norma & Ron Westcott

Al & Pat Wherrett[†]
 Florence & Donald Whitmore
 Theresa Wiktorski
 Leslie Wilson
 Gustine & Dennis Wilton
 James Wood[†]
 27 Anonymous

^{*}Current Royal MTC Board of Trustees/Advisory Board members [†]Current Royal MTC staff [‡]Monthly Donors/Drama Club [§]Fondly Remembered

SUPPORTERS

SPONSORS

300 Main
 Air Canada
 The Asper Family Foundation
 The Gail Asper Family Foundation
 The Asper Foundation
 Bell MTS
 Birchwood Lexus
 BMO Financial Group
 Bonaventure Travel Inc.
 Canada Life
 Culligan Water
 Dycom Direct Mail Services
 Esdale Printing Co. Ltd.
 Fairmont Winnipeg
 Fillmore Riley LLP
 Friesens Corporation
 GFL Environmental
 HUB International
 IG Wealth Management
 Jones & Co Wine Merchants
 Lawton Partners
 Soirée Event Planning
 Manitoba Bar Association
 Liquor Mart
 Manitoba Public Insurance
 McDiarmid Flowers
 McNally Robinson Booksellers
 PCL Construction
 POS Systems
 RBC Foundation
 RE/MAX
 Red River Co-operative Ltd.
 Relish New Brand Experience
 Richardson Foundation
 Sleeman Breweries Ltd.
 Stantec Consulting Ltd.
 Tanchak Wealth Management Group
 Taylor McCaffrey LLP
 TD Bank Group
 The Thomas Sill Foundation
 Torque Brewing
 University of Manitoba
 Wawanesa Insurance
 Winnipeg Free Press

CORPORATE DIRECTOR'S CIRCLE

\$25,000+

Johnston Group Inc.
 Richardson Foundation

\$5,000-9,999

Cambrian Credit Union
 Maxim Truck & Trailer - Doug
 Harvey & Jan Shute

\$3,000-4,999

Maple Leaf Construction Ltd., Blake
 Fitzpatrick

\$1,200-2,999

Arthur J. Gallagher Insurance and
 Risk Management
 B.A. Robinson Co Ltd.
 Domo Gasoline Corporation Ltd. -
 Kate M. Everett, President
 IATSE Local 856
 MMP Architects
 Pollard Banknote Limited
 PRA Inc.
 Qualico
 Terracon Development Ltd.

CORPORATE COMPANY CIRCLE

\$600-1,199

Astroid Management Ltd.
 Mid West Packaging Limited
 Premier Printing Ltd.

\$300-599

MCW/AGE Consulting Professional
 Engineers
 Winnipeg Building & Decorating Ltd.

\$150-299

Beyond Referrals
 InterGroup Consultants Ltd.
 Patill/St. James Insurance

*Current Royal MTC Board of Trustees/Advisory Board members

*Current Royal MTC staff

*Monthly Donors/Drama Club



ELEVATING ARTS AND CULTURE

Air Canada is a proud airline partner of the Royal Manitoba Theatre Centre's Black & White Ball. We soar together when we support arts and cultural institutions in the communities we serve.

#flytheflag @aircanada

ÉLEVONS LES ARTS ET LA CULTURE

À titre de transporteur aérien, Air Canada est fière partenaire de l'événement Black & White Ball du Royal Manitoba Theatre Centre. En soutenant les institutions culturelles et artistiques dans les collectivités que nous desservons, nous les aidons à aller toujours plus haut, avec nous.

#HautLeDrapeau @aircanada

A STAR ALLIANCE MEMBER
MEMBRE DU RESEAU STAR ALLIANCE



AIR CANADA

SUPPORTERS

FOUNDERS' CIRCLE

Wayne & Lee Anderson
 Gail Asper, OC, OM, LLD*
 Zdzislaw (Zaz) Bajon & Patricia Hunter
 Marjorie & Morley[§] Blankstein
 Duane[§] & Pauline Braun
 Doneta Brotchie, CM* &
 Harry Brotchie
 Ken[§] & Denise Brown
 David & Lianne Carefoot
 Len & Heather Cariou
 Terri Cherniack & Steven Schipper,
 CM, OM
 Jennifer Cheslock & George Buri
 David Christianson & Vera
 Steinberger
 David* & Barb Christie
 Gerry* & Chris Couture
 D. J. Cowan
 Hugh B. Cowan
 Kerry Dangerfield*
 Laurie Lam & Larry Desrochers
 Glen* & Joan Dyrda
 Robert & Florence Eastwood
 Don & Elfie Elias
 Bill[§] & Gayle Fischer
 Anthony* & Jennifer Fletcher
 Jack Fraser
 James Gibbs[§]
 Sandy & Rheel Gousseau
 Rita Gunn[§] & Gregory Mason
 John* & Nicola Guttormson
 Ahava Halpern & Frank Lavitt
 Linda Hamilton & Grange Morrow
 Gary Hannaford* & Cathy Rushton
 Ted[§] & Gail Hechter
 Elaine Heinicke[§]
 Shawn Hughes & Bruno Koehn
 June[§] & Bob Jackson Fund for the
 Performing Arts
 Maureen E. Jay
 Andrew & Wendy Jensen
 David & Diane Johnston
 Dr. Leonard & Hope[§] Kahane
 Janis Kaminsky
 Jason Kasper
 John Kearsey
 Gordon & Anne Keatch[§]
 Rob Kennedy & Claudette Leclerc
 Serena Helen Kraayeveld
 Leona J. MacDonald
 Cheryl Johansson[§] & Michael
 Mainman
 Mark & Gloria Mancini
 Virginia Martin[§]
 Peggy Barker & Ron McKinnon

Jim* & Penny McLandress
 Barb Melnychuk
 Bob & Pat Migliore
 Jeffrey Morton*
 Ken & Sharon Mould
 Dr. Liam Murphy[§]
 Robb & Heather Paterson
 Chris Pearce
 Scott Penner
 Gina & John* C. Petersmeyer
 Drs. Bill Pope & Elizabeth
 Tippet-Pope
 K. Heather Power & Harold Klaus
 Margaret Redmond* & Greg Gillis
 Edward Fisher & Lyse Rémillard
 Joan D. Richardson
 Jean Riggall
 Michelle Rowan
 Michael T. Ruta
 Sharon Ryman
 Susan Skinner*
 Kevin Hines & Shelly Smith-Hines
 Bill & Laurie* Speers
 Deborah Spracklin
 Joan Stephens
 Joanne Tait
 Suzanne Ullyot
 Lionel & Lorraine Wiens
 Margaret[§] & Alfred Wikjord
 Richard L. Yaffe* & John A. Statham[§]
 Brenda Zaporzan[§]
 2 Anonymous

ENDOWMENT - STEVEN SCHIPPER FUND

Many thanks to the generosity of our Endowment Fund donors who gave a gift or fulfilled a pledge payment between Dec 1, 2022 and Feb 23, 2024. Amounts listed are cumulative.

\$5,000,000+

Government of Canada/
 Gouvernement du Canada
 Canadian Heritage/Patrimoine
 canadien

\$250,000-499,999

Gail Asper, OC, OM, LLD* &
 Michael Paterson

\$100,000-249,999

The Leigh & Liam Murphy Family Fund
 Henriette Ricou & Jure Manfreda

\$25,000-49,999

Susan Glass & Arni Thorsteinson
 J.K. May Investments Ltd.
 Cameron & Carole Osler
 Terracon Development Ltd.

\$10,000-24,999

Don & Sheila Katz
 Susan & Keith Knox
 Garry Markham
 Norma Anne Padilla
 L. Blair Philpott & Tom Kynman
 Margaret[§] & Alfred Wikjord

\$5,000-9,999

Margaret Caie
 Ron and Carol Chapman
 Pam & Andrew Cooke
 Gordon & Sherratt Moffatt
 Gina O'Connor & John C.
 Petersmeyer*
 Barbara Scheuneman
 Dr. Dorothy Y. Young
 2 Anonymous

\$2,500-4,999

Don & Cheryl Breakey
 Sheila & David Brodovsky
 Jan & Kevin Coates
 Roberta Dyck
 Michael & Lynn Evans

*Current Royal MTC Board of Trustees/Advisory Board members *Current Royal MTC staff *Monthly Donors/Drama Club [§]Fondly Remembered
 If you have remembered Royal MTC in your will, please let us know.

SUPPORTERS

John & Margaret Graham
Carol Campbell & Andy Krentz
Barbara Main
Elaine Toms

\$1,000-2,499

Joan & Edward Alexander
Ron & Joan Boyd
Emily Burt
Art & Donna Chow
Agnes & John K. Collins
Jeremy & Maureen Gordon
Teresa A. Hay
Jordan Janisse & Teresa Cooper
Lynne Jentsch
Barbara Latocki
Gerry Matte & Lydia Surasky-Matte
Peggy Barker & Ron McKinnon
Anthony & Joyce McWha
Estelle Meyers
Paul & Elaine Neelon
Myron Pawlowsky & Susan Boulter
Edna Poulter
W. & N. Rennie
Jim & Susan Shaw
Howie & Sue Simpson
Deborah Spracklin
2 Anonymous

\$500-999

Marge & Ted Avent
Peggy Bainard Acheson - in memory
of Judy Acheson
Mr. & Mrs. Fred Kisil
Dr. Shelley Mahoney
Bob & Pat Migliore
Marlene Mortimer
Ivor & Lorna Schledewitz
Gabor Vamos & Brenda Silver

UP TO \$499

Ingrid Bolbecher
Allan & Evelyn Hardy
Nancy Latocki
F. Lemieux
Jacqueline L. Melnyk
Edward Fisher & Lyse Rémillard
Elaine Walker
2 Anonymous

**MANY THANKS TO
OUR VOLUNTEERS!**

Act Like a Star!

Everyone at the theatre is part of the show. Yes, even you.

You want to be a star, don't you?

These tips will make you a stand-out performer (in a good way)!

SCENTS AND SENSIBILITY

Many theatre lovers experience adverse medical reactions from scented products. **Please consider others before using scented products.**

PARK YOUR MOBILE DEVICE

We know something interesting is happening on social media. It always is. But your neighbours want to watch the play. **Please turn off all mobile devices.**

THE SOUND OF SILENCE

Our theatre has great acoustics. So **when you're talking during the show, everyone can hear you.** Your neighbours, the ushers and even the actors. We want you to talk about the show but at intermission or after the final bows.

We're always happy to see you at the theatre. Thank you for coming!

SUPPORTING PARTNERS

CORE FUNDERS



EXCLUSIVE PRODUCTION SUPPORTER



TOM HENDRY WAREHOUSE SEASON SPONSOR



OPENING NIGHT SPONSOR



JOHN HIRSCH MAINSTAGE PRODUCTION SPONSORS



TOM HENDRY WAREHOUSE PRODUCTION SPONSOR



JOHN HIRSCH MAINSTAGE PERFORMANCE SPONSORS



THEATRE FOR YOUNG AUDIENCES



NATIONAL MENTORSHIP PROGRAM



PIMOOTAYOWIN CREATORS CIRCLE



REGIONAL TOUR



UNDERSTUDIES



WINNIPEG 150 CELEBRATION PARTNER



SUPPORTING PARTNERS

BLACK & WHITE BALL

SILVER SPONSOR



SILVER SPONSOR



AUCTION SPONSOR



COCKTAIL SPONSOR



FILLMORE RILEY VACATION RAFFLE SPONSORS

FillmoreRiley



AIR CANADA

VENUE SPONSOR



WINE SPONSOR



LAWYERS PLAY



DESIGN SPONSOR



CAPITAL ASSISTANCE



SEASON MEDIA SPONSOR



SUPPORTING SPONSORS



WINNIPEG FRINGE THEATRE FESTIVAL



BEHIND THE SCENES

BOARD OF TRUSTEES

HONORARY MEMBERS

Her Honour, Lt. Governor Anita R. Neville
The Honourable Wab Kinew, Premier of Manitoba
His Worship, Mayor Scott Gillingham

EXECUTIVE OFFICERS

Laurie Speers, Chair
Edward Acuna, Chair-Elect & Nominating Committee Chair
Susan Freig, Secretary
David Kroft, Governance & Strategic Planning Committee Chair
Nalini Reddy, Inclusion, Diversity, Equity & Accessibility Committee Chair
Geeta Tucker, Treasurer & Organizational Performance Committee Chair
Claire Workman, Resource Development Committee Chair

TRUSTEES

Emily Burt
Brad Favel
Katherine Fox
David Lalama
Andrea Lochhead
Linda McGarva-Cohen
Jocelyne Prefontaine
Loren Remillard
Sudhir Sandhu
Jennifer Tesoro

ADVISORY COUNCIL

John Guttormson - Chair
Gail Asper
Doneta Brothie, CM
Angus Campbell
David Christie, Chair
Gerry Couture
Kerry Dangerfield
Hy Dashesvsky
Glen Dyrda, FCA
Anthony C. Fletcher
Jean Giguere
Charron Hamilton
Gary Hannaford, FCA
Yude Henteleff
Ken Houssin
Colin R. MacArthur, KC
Patrick J. Matthews
Jim McLandress
Jeffrey Morton, FCA
Hon. Jack Murta
Lillian Neaman
John Petersmeyer
Lawrence Prout
Jeff Quinton
Patricia Rabson
Margaret Redmond
Susan Skinner
Al Snyder
Maureen Watchorn

STAFF

ACCOUNTING/FINANCE

Carol Ellis, Director of Finance, CPA, CMA
Kim Friesen, Payroll Administrator
Yvonne O'Connor, Accounts Payable Administrator

ADMINISTRATION

Kurt Brown, HR Generalist
Camilla Holland, Executive Director
Kathrin Moncaster, IT Manager

ARTISTIC

Katie German, Assistant Program Director, Pimootayowin Creators Circle
Melissa Langdon, Artistic Associate
Isabelle Ly, Producer
Ian Ross, Program Director, Pimootayowin Creators Circle
Kelly Thornton, Artistic Director
Leslie Watson, Company Manager

BOX OFFICE

Colleen Hrabí, Director of Patron Services
Meaghan Fletcher, Box Office Manager
Box Office Representatives: Sharon Bunn, Meagan Chrest,
Jane Hunter, Alora Kempthorne, Shayla Meeroff, Daniel Mitchell,
Carolyn Schroeder, Tatiana Tuazon

CARPENTRY (JOHN HIRSCH MAINSTAGE)

Louis Gagné, Layout Carpenter
Brent Letain, Master Carpenter
Chris Seida, Scenic Carpenter

DEVELOPMENT

Patrick Hanan, Development Database Specialist
Brendan McKeen, Individual Giving Manager
Melissa Novecosky, Director of Development
Stephanie Porrior, Event Coordinator

FRONT OF HOUSE

Janice Marple, Volunteer Manager
Betsy Ruck, Front of House Manager
Trish Cooper, Assistant Front of House Manager
Alanna McPherson, Assistant Front of House Manager
Cole Reuther, Assistant Front of House Manager
Front of House Staff: Renelle Chartier, Rylen de Vries,
Chael Donald, Matthew Fletcher, Haeln Gebre, John George,
Besso Ghassan, Cassidy Groening, Joanna Houston,
Christine Leslie, Kyra Lyle, Kimmy Martin, Ross McMillan,
Christina Reid, Coral Ross, Odéah Roy, Cobi Winston

MAINTENANCE

Chris Fletcher, Building Manager

MARKETING & COMMUNICATIONS

Ksenia Broda-Milian, Education and Enrichment Manager
Sue Caughlin, Marketing & Communications Manager
Katie Inverarity, Director of Marketing & Communications
Desiree La Vallee, Ticketing Application Specialist
Savannah Lillies, Marketing & Communications Coordinator
Micah Parkinson, Communications & Social Media Manager

PAINT

Shauna Jones, Assistant Head Scenic Artist
Carla Schroeder, Head Scenic Artist

PRODUCTION

Christine Corthey, Production Associate
Ian Kirk, Production Driver
Jaxun Maron, Assistant Technical Director
Russell Martin, Director of Production
Donnie Osler, Technical Director
Brenda Vaca, Assistant Production Manager

PROPERTIES

Khaeler Bautista, Props Builder
Rachel Bazuki, Props Builder/Buyer
Linda Beech, Props Builder
Zoë Leclerc-Kennedy, Acting Head of Props
Jamie Plummer, Head of Props (on leave)

STAGE CREW

Chris Coyne, Head of Sound
Kayla McSwain, Head of Wardrobe
Gary Plouffe, House Stage Hand
Claude Robert, Head Electrician
Chris Thomson, Head Carpenter

TOM HENDRY WAREHOUSE

Tim Clark, Head of Sound
Ryan Spracklin, Master Carpenter
Fisher Wohlgenut, Head Electrician

WARDROBE

Thora Lamont, Head of Wardrobe, Cutter
Heather Thorleifson, Associate Head of Wardrobe
Jackie Van Winkle, Head Buyer & Accessories Coordinator

WIGS

Beverly Covert, Head of Wigs/Make-Up

WINNIPEG FRINGE THEATRE FESTIVAL

Chuck McEwen, Executive Producer
Tori Popp, Festival Manager

HONORARY STAFF

Zaz Bajon, General Manager Emeritus
Steven Schipper, CM, OM, Artistic Director Emeritus

ADDITIONAL PRODUCTION STAFF

THE LEHMAN TRILOGY

Chris Hadley, Carpenter
Farrah Okolita, Scenic Painter
France Richards, Props Apprentice*
Martha Schram, Stitcher
Liam Shattuck, Carpenter
Additional staff provided by IATSE Local 63

GUILT: A LOVE STORY

Gerry Egan, Tour TD
Additional staff provided by IATSE Local 63

*Position funded through the Jean Murray - Moray Sinclair Theatre Apprenticeship Program



Empowering
creative
young minds

Proudly supporting
Royal Manitoba Theatre Centre

Canada Life and design are trademarks
of The Canada Life Assurance Company.

canada ™

THE POWER *of* STORY

For the 2024/25 season, we're delighted to share the power of story through a wonderfully ridiculous farce, a mix of classic and contemporary plays, new Canadian works and uplifting musicals. This season is another big year, as we continue to be a home for theatre lovers.

DEADLINE

APRIL 13

SUBSCRIBE TO THE 2024/25 SEASON BY APRIL 13

to secure your seats and be entered to win a \$250 gift card package for neighbourhood restaurants.

RoyalMTC.ca | 204 942 6537