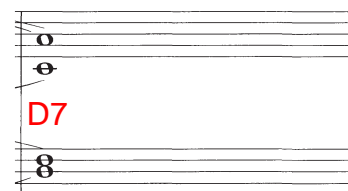


ROLF:



You



9 Tranquillo

(with bicycle light)

wait, lit - tle girl, on an emp - ty stage, For fate to turn the light on. Your

p +Hp.
colla voce

Bells
Hp.

LIESL:

life, lit - tle girl, is an emp - ty page That men will want to write on. To

19

ROLF: Moderato

write on. _____ You are six - teen go - ing on sev - en - teen,

+W.W. Str.

rit. *p* Cls., Bsn.

Ba - by, it's time to think. Bet - ter be - ware, Be can - ny and care - ful,

Tpts.

27

Ba - by, you're on the brink. You are six - teen go - ing on sev - en - teen,

W.W. Br. Str.

mf leggiero *p* Cls., Bsn.

Fel - lows will fall in line. Eager young lads And rou - es and cads Will

Tpts.

35

of - fer you food and wine. To - tal - ly un - pre - pared are you To
Fls. etc.

Bsn., Hns. Cls. Str. senza mutes etc.

face a world of men. Tim - id and shy and scared are you of

43

things be - yond your ken. You need some - one old - er and wis - er

W.W. 7 *f* Tutti *pp sub.* Cl., Bsn. etc.

Hns.

Tell - ing you what to do. I am sev - en - teen go - ing on eight - een,

E.H. *p*

Score for page 63, featuring vocal and instrumental parts. The key signature is one sharp (F#).

Vocal Part: The vocal line consists of the lyrics "I'll take care of you." with a long melisma on "you." The melody is written on a single staff.

Instrumental Parts:

- Fl. E.H. (Flute in E-flat):** Plays a melodic line in the first system, with a repeat sign.
- Tpts. (Trumpets):** Enter in the second system with a *p* (piano) dynamic, playing a block chord.
- Bsn., Vc. (Bassoon and Violoncello):** Enter in the third system with a long note, also marked *p*.

The piano accompaniment is written for the left hand on a grand staff, featuring a steady eighth-note bass line and chords in the right hand.