

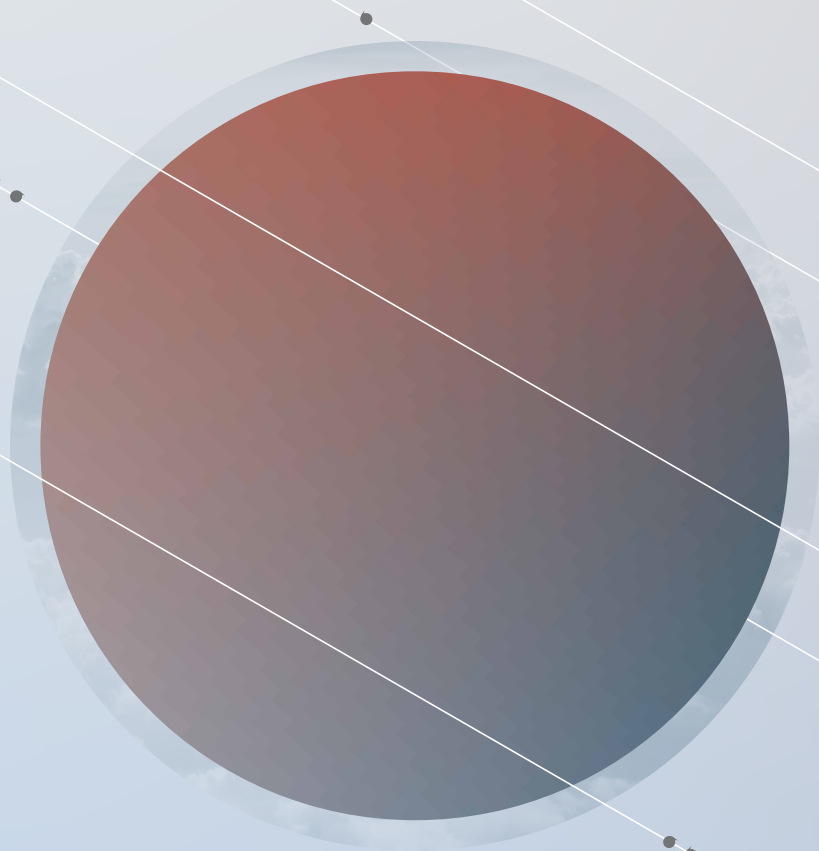
# OVATION

ROYAL  
**MTC**  
MANITOBA THEATRE CENTRE

VOL 28 • NO 3  
MAY 2021

## TINY PLAYS, **BIG IDEAS**

By Waawaate Fobister, Primrose Madayag Knazan,  
Jordan Sangalang and Liam Zarrillo



PRODUCTION SPONSORS

THE  
**ASPER**  
FOUNDATION

GAIL ASPER  
FAMILY FOUNDATION

BMO 

THE  
WINNIPEG  
FOUNDATION  
For Good. Forever. 

## THEATRE ABBREVIATION LEGEND

<b>Arts Club</b> Arts Club Theatre Company • Vancouver, BC	<b>RNT</b> Royal National Theatre • London, England
<b>ATF</b> Atlantic Theatre Festival • Wolfville, NS	<b>Royal Alex</b> The Royal Alexandra Theatre • Toronto, ON
<b>ATP</b> Alberta Theatre Projects • Calgary, AB	<b>RSC</b> Royal Shakespeare Company • Stratford-upon-Avon, England
<b>BAM</b> Brooklyn Academy of Music • NYC	<b>RWB</b> Royal Winnipeg Ballet • Winnipeg, MB
<b>Bard on the Beach</b> Bard on the Beach Shakespeare Festival • Vancouver, BC	<b>Sarasvati</b> Sarasvati Productions • Winnipeg, MB
<b>Belfry</b> The Belfry Theatre • Victoria, BC	<b>Segal</b> The Segal Centre for Performing Arts • Montreal, QC
<b>Blyth</b> Blyth Theatre Festival • Blyth, ON	<b>Shaw</b> Shaw Festival • Niagara-on-the-Lake, ON
<b>Broadway</b> Theatre district • New York, NY	<b>SIR</b> Shakespeare in the Ruins • Winnipeg, MB
<b>CBC</b> Canadian Broadcasting Corporation	<b>Soulpepper</b> Soulpepper Theatre Company • Toronto, ON
<b>Centaur</b> Centaur Theatre Company • Montreal, QC	<b>Stratford</b> Stratford Festival • Stratford, ON
<b>Citadel</b> The Citadel Theatre • Edmonton, AB	<b>SummerWorks</b> SummerWorks Theatre Festival • Toronto, ON
<b>COC</b> Canadian Opera Company • Toronto, ON	<b>TA</b> Theatre Aquarius • Hamilton, ON
<b>CS</b> Canadian Stage • Toronto, ON	<b>Tarragon</b> Tarragon Theatre • Toronto, ON
<b>Dora</b> Dora Mavor Moore Award • Toronto, ON	<b>TBTR</b> Theatre by the River • Winnipeg, MB
<b>Drayton</b> Drayton Entertainment • Ontario	<b>TC</b> Theatre Calgary • Calgary, AB
<b>Dry Cold</b> Dry Cold Productions • Winnipeg, MB	<b>TiFT</b> Talk is Free Theatre • Barrie, ON
<b>Factory</b> Factory Theatre • Toronto, ON	<b>TNB</b> Theatre New Brunswick • Fredericton, NB
<b>GCTC</b> The Great Canadian Theatre Company • Ottawa, ON	<b>Toronto Free</b> Toronto Free Theatre • Toronto, ON
<b>Grand</b> The Grand Theatre • London, ON	<b>TPM</b> Theatre Projects Manitoba • Winnipeg, MB
<b>HGJT</b> Harold Green Jewish Theatre Company • Toronto, ON	<b>TSO</b> Toronto Symphony Orchestra
<b>Mirvish</b> Mirvish Productions • Toronto, ON	<b>U of M</b> University of Manitoba
<b>Moving Target</b> Moving Target Theatre Company • Winnipeg, MB	<b>U of T</b> University of Toronto
<b>MTYP</b> Manitoba Theatre for Young People • Winnipeg, MB	<b>U of W</b> University of Winnipeg
<b>NAC</b> National Arts Centre • Ottawa, ON	<b>ViC</b> The Village Conservatory for Music Theatre • Winnipeg, MB
<b>Necessary Angel</b> Necessary Angel Theatre Company • Toronto, ON	<b>VP</b> Vancouver Playhouse Theatre Company • Vancouver, BC
<b>Neptune</b> Neptune Theatre • Halifax, NS	<b>West End</b> Theatre district • London, England
<b>NFB</b> National Film Board of Canada	<b>WCT</b> Western Canada Theatre • Kamloops, BC
<b>NTS</b> National Theatre School of Canada • Montreal, QC	<b>WJT</b> Winnipeg Jewish Theatre
<b>Persephone</b> Persephone Theatre • Saskatoon, SK	<b>WSO</b> Winnipeg Symphony Orchestra
<b>PTAM</b> Popular Theatre Alliance of Manitoba • Winnipeg, MB	<b>WST</b> Winnipeg Studio Theatre
<b>PTE</b> Prairie Theatre Exchange • Winnipeg, MB	<b>YPT</b> Young People's Theatre • Toronto, ON
<b>Rainbow</b> Rainbow Stage • Winnipeg, MB	<b>zone41</b> zone41 theatre • Winnipeg, MB

Royal MTC is a member of the Professional Association of Canadian Theatres and engages, under the terms of the Canadian Theatre Agreement, professional artists who are members of the Canadian Actors' Equity Association.

Scenery, Carpentry and Show Running Crew at the John Hirsch Mainstage and the Tom Hendry Warehouse are members of IATSE Local 63.

The Royal Manitoba Theatre Centre is proud to call Manitoba home. Royal MTC is located in Winnipeg on Treaty 1 land, the traditional territory of the Ininew, Anishinaabe and Dakota peoples, and the homeland of the Métis Nation. We are thankful for the benefits sharing this land has afforded us, and we are committed to the responsibilities of the Treaty. Hiy Hiy, Miigwetch, Wopida and Maarsii.

## MESSAGE FROM THE ARTISTIC DIRECTOR



Kelly Thornton

Welcome to *Tiny Plays, Big Ideas*. These four short plays were originally conceived as site-specific theatre to be presented at the Canadian Museum for Human Rights this past fall. As restrictions took hold, we were not able to proceed as planned – initially postponing the event, and eventually pivoting altogether to a digital format.

As I've always believed, every obstacle is an opportunity and what this change of plans has afforded us is the chance to create four short films all responding to the initial prompt of addressing issues of human rights. These four independent artists have created work personal to them and

their lived experience, and their perspectives are eye-opening.

*Tiny Plays* has also brought together a remarkable creative team to support these visions and, while some of the team are seasoned artists, many others are new to our theatre – the next generation challenging us to see the world through their eyes.

The passion and rigour these artists have brought to their work is extraordinary and I am so pleased to make space and share these bold perspectives.

Thank you so much for watching,

A handwritten signature in dark ink, appearing to read 'Kelly'.

# Tiny Plays, Big Ideas

May 7 – 23, 2021

## A Piece of Me

By Jordan Sangalang

Director ..... Shannon Guile  
 Performer.....Jordan Sangalang  
 ASL Consultant ..... Joanna Hawkins  
 ASL-English Interpreter.....Cindy Boscow  
 ASL-English Interpreter..... Tessa Rogowski

## Ode to RED Auntie

By Waawaate Fobister

Director .....Frances Koncan  
 Red Niecy Nephew .....Waawaate Fobister

### Special thanks:

Art installation of The REDress Project - Jaime Black  
 Video Footage of Jaime Black's The REDress Project - Kejic Productions  
 Abigail Echo-Hawk, wardrobe inspiration from her 'Body Bag Dress'  
 Music "The Deer Song" by Jennifer Kreiberg  
 National Indigenous Residential School Museum of Canada

## The Show

By Liam Zarrillo

Director ..... Matthew Paris-Irvine\*  
 The Artist ..... Kristian Jordan  
 The Witness .....Liam Zarrillo  
 Choreographer..... Jacquie Loewen

Liam Zarrillo's tattoos appear in *The Show* courtesy of Shawn Farrell of Born Wild Tattoo, J.R. Harper of Rising Sun Tattoo, Coral Pollock of Coral Pollock Tattoo, Don Ritson, Caleb Schroeder of Capstone Tattoos, Reuben Todd.

Medical Services by Caitlin Rogowski, Meghan Stewart & Krista Wilson.

## Where.Are.You.From.

By Primrose Madayag Knazan

Director .....Hazel Venzon\*  
 Woman .....Rochelle Kives  
 Busker .....Robb Paterson

## CREATIVE TEAM

<i>Set Designer</i> .....	Linda Beech
<i>Costume Designer</i> .....	Joseph Abetria
<i>Lighting Designer</i> .....	Scott Henderson
<i>Sound Designer / Original Music</i> .....	Davis Plett*
<i>Video Designer</i> .....	Carla Hernandez
<i>Video Design Mentor</i> .....	Hugh Conacher
<i>Dramaturg</i> .....	Audrey Dwyer†
<i>Artistic Coordinator</i> .....	Melissa Langdon
<i>Apprentice Set Designer</i> .....	Joyce Licup*
<i>Show Manager</i> .....	Leslie Watson†
<i>Assistant Show Manager</i> .....	Zoë Leclerc-Kennedy
<i>Apprentice Show Manager</i> .....	Bearchild Harper
<i>Video Production</i> .....	Frank Digital

Royal MTC thanks the Canadian Museum for Human Rights, CEO Isha Khan and leadership staff for embracing the *Tiny Plays, Big Ideas* concept.

Production photography by Hugh Conacher.

## PRODUCTION SPONSORS



## DIGITAL PROGRAMMING SPONSOR



## PRODUCED UNDER THE AUSPICES OF

**ACTRA Manitoba**

\*Position funded through the Jean Murray - Moray Sinclair Theatre Apprenticeship Program

†Past Jean Murray - Moray Sinclair Scholarship award recipient

\*Position funded through the Kingfisher Foundation

## A Piece of Me

**Jordan Sangalang**

*Performer /  
Playwright*

**ROYAL MTC** First appearance.

**OTHER THEATRE** *Magic of ASL* (Deaf Arts Manitoba); *Hamlet: The Rest Is Silence* (Echo Theatre); *Sound Off* (Deaf Theatre Festival); *Lame Is* (Sick + Twisted Theatre); *The Threepenny Opera* (Sick + Twisted Theatre/AA Battery Productions); *Tribes* (WJT); 100 Decibels: A Deaf Mime Troupe.

**TRAINING** Physical Sketch Comedy by Hot Thespian Action's Shannon Guile.

**ET CETERA** Jordan performs with 100 Decibels: A Deaf Mime Troupe and independent ASL performances. He is also a Deaf Consultant and does ASL translations and coaching.

**Shannon Guile**

*Director*

**ROYAL MTC** Actor: *The History of Manitoba from the Beginning of Time to the Present in 45 Minutes*.

**OTHER THEATRE** Director: *Can You Hear Me Now, Loud and Clear* (100 Decibels). Assistant Director: *Tribes* (WJT). Actor: *Plé* (MTYP); *The Miser of Middlegate* (TPM).

**FILM** Actor: *The Secret Ingredient*, *Percy, A Dream of Christmas*, *Journey Back to Christmas*.

**TEACHING** Shannon also teaches Mime & Improvisation and Stage Combat at the University of Winnipeg Department of Theatre and Film.

**ET CETERA** Shannon is co-founder/co-creator of the three-time Canadian Comedy Award-nominated sketch comedy troupe Hot Thespian Action and Deaf mime troupe 100 Decibels. Most recently, she co-created and performed in the world debut of the first trilingual kids show *Plé*.

**Joanna Hawkins**

*ASL Consultant*

**ROYAL MTC** First engagement.

**OTHER THEATRE** *Plé* (virtual) (MTYP); *Love Letters for Juliet* (Red Lips Productions); Mrs. Peachum in *The Threepenny Opera* (Sick + Twisted/AA Battery Production); 100 Decibels: A Deaf Mime Troupe.

**FILM** *Movie Theatre Madness*, *Leaf Fight*, *Mime*, *Tales from the Loop*, *Snowed Inn*, *The Parts You Lose*.

**TRAINING** University of Winnipeg – physical performance/mime, with Shannon Guile; University of Manitoba – Bachelor of Fine Arts graduate.

**ET CETERA** Hailing from Poland, Joanna has always felt a strong connection to the arts. She is a skilled artist (drawing & painting), graphic designer and photographer but her real dream had always been with acting. Joanna has performed as a lead in a children's show for young deaf children and has been involved in several films in Manitoba as a featured extra as well as two television commercials. Joanna's aim is not only to entertain audiences with her incredibly crisp and clean physical illusions but to reach out with the beauty of Deaf Culture and build bridges between the hearing and Deaf worlds. Joanna continues to enjoy working in the theatre/film industry as an actor, ASL translator and ASL consultant/coach.

# “Be**cause** the arts forge human connection and ignite unforeseen possibilities within all of us.”

Kelly Thornton, Artistic Director, Royal Manitoba Theatre Centre



FindyourBe**Cause**.org



THE  
WINNIPEG  
FOUNDATION   
Your Community Foundation  
**For Good. Forever.**

Give to your favourite **Cause** at The Foundation and make Winnipeg better by helping local charities.

## TINY PLAYS, BIG IDEAS



**Cindy Boscow**

*ASL-English  
Interpreter*



**Tessa Rogowski**

*ASL-English  
Interpreter*

### Ode to RED Auntie



**Waawaate Fobister**

*Red Niecy Nephew /  
Playwright*

**ROYAL MTC** First appearance.

**ET CETERA** Waawaate Fobister is an actor, dancer, playwright, choreographer, instructor and a producer, currently residing in Winnipeg. A proud Anishnaabe from Grassy Narrows First Nation. A recipient of two Dora awards for outstanding actor and play for *Agokwe*, Humber College outstanding actor, Mark S. Bonham Centre award from University of Toronto for their advocacy and public knowledge in sexual diversity. Waawaate also has many nominations, including Ontario Premier's Award, K.M. Hunter Award and Sterling Award - Edmonton. Waawaate trained and studied Theatre Arts - Performance at Humber College, Indigenous Dance at Banff Centre for the Arts, Summer School Intensives at Toronto Dance Theatre, Intensives at Centre for Indigenous Theatre and Kaha:wi Dance Theatre. Waawaate has performed with many major theatre companies across

Canada and their work and research has taken them to many places as an artist, including Japan, UK, US, and many coasts across Turtle Island. Currently, they are busy teaching at MTYP, and curating Indigenous Programming for the Kick & Push Festival. While the world is at a standstill, Waawaate has a couple new works that are brewing and is very excited to share with you. Stay tuned!



**Frances Koncan**

*Director*

**ROYAL MTC** Assistant Director: *A Doll's House, Part 2* (with Mirvish), *The Humans*. Apprentice Director: *Seminar* (with Mirvish). Playwright: *Women of the Fur Trade*.

**OTHER THEATRE** Seat-filler at the 2016 Tony Awards.

**FILM** *Outdigenous* (Writer/Director), *THAT'S AWSM!* (Writer).

**TRAINING** MFA Playwriting, City University of New York Brooklyn College.

**ET CETERA** Follow them at @franceskoncan on your generation's preferred social media platform.



# Great theatre lives here.

BMO



At BMO, we take pride in our local communities and the artists that contribute to the cultural diversity and artistic richness of our cities.

We're proud to support the **Royal Manitoba Theatre Centre.**

## The Show



**Kristian Jordan**  
*The Artist*

**ROYAL MTC** *Last Train to Nibroc* (Regional Tour).

**OTHER THEATRE** *Post-Democracy*, *Prairie Nurse* (PTE); *Romeo and Juliet* (SIR); *The Lion, The Witch and The Wardrobe*, *Jabber* (MTYP); *Bad Jews* (WJT).

**FILM/TV** *I Propose We Never See Each Other Again After Tonight*, *Burden of Truth*.

**ET CETERA** Kristian is a member of the Emerging Playwrights Unit with PTE and MAP, and co-wrote *Red Earth* (TPM/OTT) with Rick Chafe.

**Ready for tomorrow.**

**Protect what matters most.**

When you work with HUB, you're at the center of a vast network of experts dedicated to helping you prepare for the unexpected, with advice and solutions tailored to protect your family, your home and more.

**Keith Jordan, President and CEO**  
204-988-4791  
keith.jordan@hubinternational.com  
[hubinternational.com](https://hubinternational.com)



**Liam Zarrillo**  
*The Witness / Playwright*

**ROYAL MTC** Apprentice Director: *Kill Me Now* (with NAC).

**OTHER THEATRE** Playwright: *Winnipeg Stories: The Green Building* (PTE). Performer: (upcoming) *Narrow Bridge* (WJT); *Othello* (Beau Theatre Co.); *Boundary Ave*, *TASTE* (One Trunk Theatre). Director: *Village Ax* (TPM).

**TRAINING** B.A. Hons. Directing - Dept. of Theatre & Film (University of Winnipeg).

**ET CETERA** Liam is a member of the Prairie Theatre Exchange and Manitoba Association of Playwrights-supported Emerging Playwrights Unit.



**Matthew Paris-Irvine**  
*Director*

**ROYAL MTC** First engagement.

**OTHER THEATRE** Director: *O(phelia)* (ShakespeareFest); *Bastard* (FemFest/ Out From Under The Rug). Apprentice Director: *Becoming Dr. Ruth* (WJT). Actor: *Hamlet*, *The Comedy of Errors* (ShakespeareFest); *Time and the Conways*, *Concord Floral*, *Rosencrantz and Guildenstern are Dead* (U of W).

**FILM** *I Propose We Never See Each Other Again After Tonight* (Mongrel Media); *Before Anything You Say* (Darkling Productions).

**ET CETERA** Matthew is a founding member of Out From Under The Rug. Love to Melissa, Sophie and Omar, my closest friends and collaborators.

*I believe in the theatre.  
I believe that in a great city,  
or even in a small city or a  
village, a great theatre is  
the outward and visible  
sign of an inward and  
probable culture.*

- Sir Laurence Olivier -

**Proud to be production sponsors for  
the Royal Manitoba Theatre Centre's  
2020-2021 mainstage productions.**

**GAIL ASPER**  
FAMILY FOUNDATION

**THE  
ASPER  
FOUNDATION**

[asperfoundation.com](http://asperfoundation.com)

## TINY PLAYS, BIG IDEAS



**Jacquie Loewen**  
Choreographer

**ROYAL MTC** Fight Director (selected): *Roald Dahl's Matilda The Musical* (with Arts Club/Citadel), *Vietgone* (with fu-GEN/ Hope and Hell), *Hand to God*, *Unnecessary Farce*, *Private Lives*, *Gone With the Wind*, *August: Osage County*, *Romeo and Juliet*, *The Seafarer*. Actor: *Alice Through the Looking-Glass*, *Top Girls*.

**OTHER THEATRE** Fight Director (selected): *Macbeth* (Bard on the Beach); Indigenous Playwrights New Works Workshop (PTC - Vancouver); *Beauty and the Beast* (Rainbow); *The Flood Thereafter* (CS); *Don Giovanni* (Manitoba Opera); *Macbeth*, *The Merry Wives of Windsor*, *The Taming of the Shrew* (SIR); *Prairie Nurse* (PTE).

**TEACHING** U of Winnipeg, U of Manitoba, Trinity Western, Simon Fraser University, Kansas State University.

**ET CETERA** Jacqueline was a founding member of the Canadian Comedy Award-nominated sketch group Hot Thespian Action. She has adapted/directed several operas for site-specific performances for Manitoba Underground Opera, Little Opera Company, and Flipside Opera, and is currently developing a theatre-for-one show with Theatre Projects Manitoba.

## Where.Are.You.From.



**Rochelle Kives**  
Woman

**ROYAL MTC** First appearance.

**OTHER THEATRE** Most recent: *Precipice* (WJT); *Ma-Buhay Workshop* (Rainbow); *Elizabeth Rex* (Bunbury Productions); *A Year with Frog and Toad* (MTYP); *South Pacific* (WSO); *Kiss of the Spider Woman* (Dry Cold); *South Pacific* (Regina Symphony Orchestra); *Miss Saigon*, *South Pacific*, *Little Shop of Horrors* (Rainbow); *The Who's Tommy* (Platinum Theatre).

**TRAINING** Graduate of Sheridan College's Musical Theatre Performance Program.

**ET CETERA** Rochelle spent 12 years performing as the lead singer in the production casts onboard NCL, Azamara and Celebrity Cruises. She is co-founder and producer of the vocal group Unique3 who travel as featured guest artists on various cruise lines around the world. This one is for Mama and Grandma, thank you for everything, Mahal Kita.



Design with  
community  
in mind.

Engineering | Architecture  
Environmental Services

stantec.com | Glasshouse Skylofts >



## TINY PLAYS, BIG IDEAS



**Robb Paterson**

*Busker*

**ROYAL MTC** This is Robb's 88th production at Royal MTC. Director: (selected) *The Cottage*, *Next to Normal*, *Our Town*, *Guys and Dolls* (with Citadel/TC), *Trying*, *My Fair Lady*, *It's a Wonderful Life: A Radio Play*, *White Christmas*, *The Complete Works of William Shakespeare (Abridged)*, *The Woman in Black*, *The Man Who Shot Liberty Valance*, *The Retreat from Moscow*, *Steel Magnolias*, *Fully Committed*. Actor: (selected) Adam, Sir Oliver in *As You Like It* (with Citadel), Clarence, Uncle Billy in *It's a Wonderful Life: The Radio Play*, Ebenezer Scrooge in *A Christmas Carol*, Reverend Peters in *The Curious Incident of the Dog in the Night-Time* (with Citadel), Billy Bishop, Seymour in *Little Shop of*

*Horrors*, Bob Cratchit in *A Christmas Carol - The Musical* and many others.

**OTHER THEATRE** Director: *Men's Room* (Crow's Theatre); *Crazy for You*, *42nd Street*, *Big The Musical*, *The King and I*, two productions of *Beauty and the Beast* (Rainbow); *Rick: The Rick Hansen Story*, *Seussical the Musical*, *Jacob Two-Two Meets the Hooded Fang* (MTYP); *Oliver!* (Centaur); *The Affections of May* (Sudbury Theatre Centre). Recent acting: *Prairie Nurse*, *The Birds and the Bees* (PTE); *Beauty and the Beast*, *Little Shop of Horrors* (Rainbow).

**ET CETERA** Robb was the Associate Artistic Director at Royal MTC from 2003 to 2016. Love to Heather, Alex and Tara.

SHOP ONLINE

—  
**click & collect  
or delivery**



**LIQUOR MART**

**18+** | ENJOY RESPONSIBLY





**Primrose Madayag Knazan**  
*Playwright*

**ROYAL MTC** First engagement.

**OTHER THEATRE** *Precipice* (virtual reading) (So Nu festival/WJT); *Then Comes Marriage* (Carlos Bulosan/Theatre Amihan/TPM); *Seven Days* (PTE); *Breast Milk Best Milk*, *Wallflowers & Wildflowers* (Sarasvati).

**ET CETERA** Two of her plays from the Winnipeg Fringe Theatre Festival have been published in three anthologies: *Shades of Brown* in *Breakout* by Scirocco Drama, and in *Beyond the Pale* by Playwrights Canada Press. *Two Browns Don't Make a White* was published in *Generation Nexxt* by Scirocco Drama. She is a freelance food writer for the Filipino Journal. Her first novel, *Lessons in Fusion*, will be published by Great Plains Publishing under the Yellow Dog imprint in October 2021.



**Hazel Venzon**  
*Director*

**ROYAL MTC** Assistant Director: *The Mountaintop*.

**OTHER THEATRE** Directing: *Stories Houses Tell* (PTE); *BELTFEST 'N CHILL* (UNIT); *EMBRACE* (Nakai); *Haircuts By Children*, *Children's Choice Awards*, *Eat The Street*, *These Are The People In Your Neighbourhood* (Mammalian). Assistant Directing: *By Grand Central Station* (PTE). Select acting: *Kismet*, *Things Have Changed* and *Kismet: one to one hundred* (The Chop); *Blank* and *San Diego* (Rumble); *Happy Place* (PTE); *Young Drunk Punk* (YAC); *Jitters* (Belfry); *Nanay: a testimonial play* (Urban Crawl); *Wee Tube* (Replacement); *East of the Sun, West of the Moon* (Caravan); *The Shoes That Were Danced To Pieces* (Boca); *The Leisure Society* (Ruby).

**FILM/TV** Director: *Ma-Buhay* a musical journey (Bluewater Buffalo/UNIT); 1st AD: *I Knew My Murderer* (Frantic Films); 2nd AD: *Gone* (Buffalo Gal); *Perfect Match* (Farpoint). Acting: *Christmas By Starlight*, *Two Turtle Doves* (Hallmark); *Let's Meet Again*, *Forever Christmas* (Lifetime); *Percy*; *Reasonable Doubt*; *The Gesture*; *Burden of Truth* (CBC/Netflix).

**TRAINING** Director's Process, Suzuki and Viewpoints (PTE); Improv (Second City); Studio 58 (Langara); Black Hole Theatre Program, School of Fine Arts (U of M).

**ET CETERA** Hazel is the Artistic Director and Producer of *U 'N I Together* (UNIT) Productions, Dramaturg in Residence at MAP, Mentor for Creative Manitoba's Youth Mentorship Program, Coach for Creative Manitoba's MENTORLY Coaching Program.

## Creative Team



**Linda Beech**

Set Designer

**ROYAL MTC** *Women of the Fur Trade, Heisenberg.*

**OTHER THEATRE** *A Short History of Crazy Bone, Beautiful Man, Iceland (TPM); The Good, The Bad and the Munsch, Munschtopia, The Paperbag Princess (PTE); Tribes, Another Way Home, Intimate Apparel (WJT).*

**TRAINING** Honours Degree in Sculpture/ Installation from the Ontario College of Art and Design and in Theatre at Dalhousie University in Halifax. Interned at the Banff Centre for the Arts in Theatre and also Design for Dance.

**ET CETERA** Linda has worked as a visual artist and theatre professional across Canada for a number of years. She has received grants from the Canada Council for the Arts and the British Columbia Arts Council among others. Many thanks to Winnipeg for making us so welcome and to all the Boys.



**Joseph Abetria**

Costume Designer

**ROYAL MTC** Costume Designer: *Bang Bang* (with Belfry), *Last Train to Nibroc* (tour). Apprentice Costume Designer: *Billy Elliot the Musical*.

**OTHER THEATRE** (selected) Costume Designer: *Plé* (Plé Collective presented by MTP); *Spelling 2-5-5* (MTP); *Women of the Fur Trade* (Vault Projects); *Mary's*

*Wedding, Iceland* (TPM); *Concord Floral, Vinegar Tom, The Laramie Project* (U of W). Set Designer: *Richard III* (SIR). Production Designer: *The Game, Two Indians, The Seduction Theory* (Sarasvati Productions). Assistant Costume Designer: *Othello, The Neverending Story, The Rocky Horror Show, Romeo and Juliet* (Stratford).

**TRAINING** University of Winnipeg.



**Scott Henderson**

Lighting Designer

**ROYAL MTC** Over 60 productions since 1995, including *Miss Bennet: Christmas at Pemberley, Bang Bang* (with Belfry), *The Cottage, John, Sense and Sensibility, A Christmas Carol* (2017, 2005), *Shakespeare in Love* (with Citadel), *Sarah Ballenden, Black Coffee, The Audience* (with Mirvish), *Billy Elliot the Musical, The Man Who Shot Liberty Valance, Vanya and Sonia and Masha and Spike* (with Mirvish), *Next to Normal, Red* (with Belfry), *The Seagull, Top Girls*.

**OTHER THEATRE** Scott has designed lighting for opera, dance and theatre companies in Winnipeg and across Canada, including the Shaw and Stratford festivals. Most recently he designed *Carmen* for Manitoba Opera.

**TRAINING** Scott is a graduate of Ryerson Theatre School and is a member of the Associated Designers of Canada.

**ET CETERA** In 2018 Scott received a Lifetime Achievement Award at the Winnipeg Theatre Awards. He was also nominated for a Sterling Award for Outstanding Lighting Design (*Shakespeare in Love* - Citadel/Royal MTC). Special thanks to Karen, Sean and Alex for the love and support.

## TINY PLAYS, BIG IDEAS



**Davis Plett**

*Sound Designer /  
Original Music*

**ROYAL MTC** First engagement.

**OTHER THEATRE** Select sound design credits include *How It Ends* (Sick + Twisted); *Beautiful Man*, *Goodnight Desdemona (Good Morning Juliet)* (TPM); *Ellipsis*, *CONDUCT* (Alexandra Elliott); *Hedda*, *Reimagined*, *Women of the Fur Trade*, *Riot Resist Revolt Redux* (Frances Koncan/Vault Projects); *Boundary Avenue* (One Trunk Theatre).

**ET CETERA** Davis is one half of We Quit Theatre along with Gislina Patterson. They have toured their work to festivals and theatres in Toronto, Montreal, Vancouver and Ottawa. Their most recent project, *Men Explain Things to Us... And We Like It!*

was commissioned by the Stratford Festival and can be watched on [stratfordfestival.ca/AtHome](http://stratfordfestival.ca/AtHome).



**Carla Hernandez**

*Video Designer*

**ROYAL MTC** First engagement.

**FILM** Filmmaker: *Queer Fear*.

**ET CETERA** Carla is a passionate storyteller behind the camera lens. As proud member of the LGBTQ+ and Latinx community, she is driven to bring support and awareness through her art. [www.linktr.ee/carlaeher](http://www.linktr.ee/carlaeher). A very big thank you to the folks at Royal MTC for allowing me to showcase my work on their stage, and also to Hugh Conacher for helping me grow as a creator through his mentorship!

## TAYLOR McCAFFREY LAWYERS

Taylor McCaffrey is proud to support the Royal MTC.

We wish everyone involved in the production of Tiny Plays, Big ideas a great run. Break a leg.

2200-201 Portage Ave  
Winnipeg, Manitoba | R3B 3L3  
204.949.1312 | [www.tmlawyers.com](http://www.tmlawyers.com)





**Audrey Dwyer**  
Dramaturg

**ROYAL MTC** Director: *The Mountaintop*, *Women of the Fur Trade*. Consulting Director: *Bang Bang* (with Belfry). Actor: *Vanya and Sonia and Masha and Spike* (with Mirvish), *Good People*, *Medea* (with Mirvish), *The Crucible*.

**OTHER THEATRE** Director: *Blink* (U of W); *Prairie Nurse* (Lighthouse Theatre); *Calpurnia* (Nightwood Theatre/Sulong Theatre); *The Apology* (Rabiayshna Productions). Dramaturgy: Audrey has worked with companies such as Factory Theatre, Canadian Stage, Volcano Theatre, Roseneath Theatre, Young People's Theatre, Second City, Studio 180, Obsidian Theatre, Anandam Dance Theatre, Nightwood Theatre and Tarragon Theatre.

**TRAINING** National Theatre School of Canada.

**ET CETERA** Audrey is Royal MTC's Associate Artistic Director and is a multi-disciplinary artist with over 20 years of experience working as an actor, director, playwright, teacher, artistic director, facilitator and mentor. She won the Cayle Chernin Award for Theatre in 2015. She has been nominated for four Dora Awards and has won three. She has been nominated for the Pauline McGibbon Award for Direction twice. She was the Artistic Director of Cow Over Moon Children's Theatre. She was the Urjo Kareda Artist in Residence and the Assistant Artistic Director of Tarragon Theatre.



**Melissa Langdon**  
Artistic Coordinator

**ROYAL MTC** Apprentice Artistic Director\*.

**OTHER THEATRE** Voice (PTE); *Spelling 2-5-5* (MTYP); *School Girls*; *Or, The African Mean Girls Play* (Obsidian/Nightwood Theatre); *Hamlet* (SIR); *Blink* (One Trunk/W&T); *Home 2.0*, *The Game*, *New Beginnings* (Sarasvati); *O(phelia)* (ShakespeareFest); *Animosity* (Winnipeg Fringe Theatre Festival); *Time and the Conways*, *Concord Floral*, *Rosencrantz and Guildenstern are Dead* (U of W).

**FILM GRIEF** (Kaiju Productions); *Harmonize* (Prairie Kid Productions).

**TRAINING** Graduate: The University of Winnipeg Honours Acting.

**ET CETERA** Dora Award: Outstanding Production and Toronto Theatre Critics' Choice Award: Outstanding Production of a Play (*School Girls*), Bethia Henry Memorial Scholarship in Theatre and Drama, Reg Skene Emerging Artist Award. Love to OFUR, M,M & I.

\*Supported by the Canada Council for the Arts.



**Joyce Licup**

*Apprentice Set Designer*

**ROYAL MTC** First engagement.

**OTHER THEATRE** Assistant Set Designer: *A Midsummer Night's Dream* (U of W). Set Designer: *Middletown* (U of W).

**TRAINING** Graduate of the University of Winnipeg with a BA in Theatre: Design.

**ET CETERA** Although COVID has been making things difficult, I am determined to continue and pursue my dreams in the world of theatre. Thank you to Royal MTC for this opportunity during these tough times, and thanks to everyone who has been supporting me!



**Leslie Watson**

*Show Manager*

**ROYAL MTC** Stage Manager: *The Mountaintop*, *The Color Purple* (with Citadel), *A Doll's House, Part 2* (with Mirvish), *Once* (with Grand), *Kill Me Now* (with NAC), *Black Coffee*, *My Name Is Asher Lev* (with Segal), *Myth of the Ostrich*, *Late Company*, *Cabaret*, *Venus in Fur*, *The Melville Boys* (tour), *Wingfield on Ice* (tour), *Looking Back - West, Bad Dates* (tour). Assistant Stage Manager: *As You Like It* (with Citadel), *Billy Elliot the Musical*, *Jane Eyre*, *Gone With the Wind*, *Grumpy Old Men: The Musical*, *White Christmas*, *Pride and Prejudice*, *Fiddler on the Roof*, *Educating Rita* (tour), *Guys and Dolls* (with TC/Citadel). Talent Coordinator: *All is Bright*.

**OTHER THEATRE** Over 50 productions at theatres around Winnipeg and Canada,

including Rainbow Stage, Prairie Theatre Exchange, Shakespeare in the Ruins, Manitoba Theatre for Young People and Winnipeg Jewish Theatre.

**TRAINING** Graduate of Sheridan College and member of CAEA.

**ET CETERA** Leslie owns and operates Updog Boutique, with the support and love of her husband, Sean, and her dog, Murtaugh - [updogboutique.com](http://updogboutique.com).



**Zoë**

**Leclerc-Kennedy**

*Assistant Show Manager*

**ROYAL MTC** Assistant Stage Manager: *The (Post) Mistress*. Apprentice Stage Manager: *Women of the Fur Trade*, *As You Like It*, *Fun Home*, *Heisenberg*, *Shakespeare in Love*, *Sarah Ballenden*, *Bittergirl: The Musical*. Zoë has worked in the Prop Shop for various productions since 2017 and has worked for the Winnipeg Fringe Festival since 2014.

**OTHER THEATRE** Live Stream Show Runner: *Seven Visions*, *Fem Fest 2020* (Sarasvati). Apprentice Stage Manager: *A Charlie Brown Double Bill* (MTYP); *Falstaff* (MB Opera). Head of Props (Watermark Theatre, 2019); Props Apprentice (Grand Theatre, 2018/19 season); Props Coordinator (Sarasvati's Fem Fest, 2016-2019).

**TRAINING** University of Winnipeg with a BA (Hons), specialization in Theatre Production and Stage Management. Prop Builder Practicum: Banff Centre for Arts and Creativity.



**Bearchild Harper**  
*Apprentice Show  
Manager*

**ROYAL MTC** First engagement.

**OTHER THEATRE** Most recent: *Seven Visions*, *Songide'ewin* (Sarasvati).

**ET CETERA** Bear is extremely grateful to be a part of this show and wants to thank his family for the endless support he has received over the years. He only hopes to make a lasting first impression. Bear is a visual artist and finds it easier to communicate his emotions and concerns through artwork. His most recent piece is a mural inspired by the introduction of the carbon tax implemented in 2019. He wants to learn plenty more through all the many mediums of art within and around theatre.



**Frank Digital**  
*Video Production*

FRANK Digital is a full-service video production studio and world-class post production facility, with operations in Winnipeg. Our focus, whether we are producing commercials, documentaries, or television series, is to produce thought-provoking, socially responsible content. FRANK has an affinity for working with organizations that do good in the world and encourage their audience to achieve great things as citizens. With this in mind, we have produced multi-award-winning commercials, documentaries and corporate films for agencies and brands. We know how to conceptualize, create, and deliver creative products that exceed client expectations on all levels. ●



Liam Zarrillo  
in *The Show*



Waawaate Fobister  
in *Ode to RED Auntie*



Jordan Sangalang  
in *A Piece of Me*



Robb Paterson and Rochelle Kives  
in *Where.Are.You.From.*

## You make new plays happen!

This season has looked a lot different than those before and it's been especially difficult not seeing you enjoy live stories in person. However, your support throughout the year has allowed us to continue fostering new artists and storytellers. Because of you, Royal MTC was able to produce the four exciting new short works that make up *Tiny Plays, Big Ideas*.

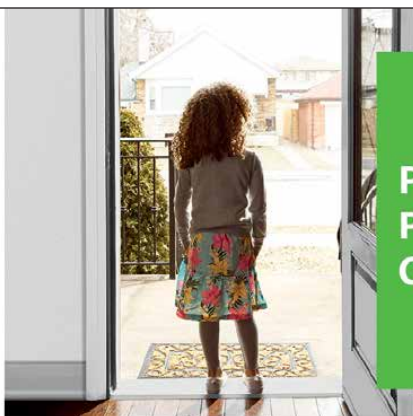
Your continued support has led to the creation of the Pimootayowin Creators Circle. Led by Governor General Award-winning playwright Ian Ross, and assisted by Katie German, the Creators Circle brings together a powerful array of Indigenous voices – each established in their own areas of artistic practice but new to playwriting: Lynette Bonin, Jim Compton, Rosanna Deerchild, Kathleen MacLean, Dave McLeod and Tracey Nepinak.

Thanks to your support, these artists have worked together for seven months. Their efforts will culminate in a play-reading series – Pimootayowin: A Festival of New Work from June 8–12. We are so excited to announce that TD Bank Group is sponsoring the festival – making it free to attend and leading to even more opportunities for program participants.

If you would like to continue supporting the creation of new plays right here at home with a donation, please contact Chris Turyk, Development Manager, at 204 954 6412, [cturyk@royalmtc.ca](mailto:cturyk@royalmtc.ca) or visit [royalmtc.ca](http://royalmtc.ca). ●

PIMOOTAYOWIN: A FESTIVAL OF NEW WORK SPONSOR





Proud to support  
Pimootayowin  
Creators Circle.

We are working together with **Royal Manitoba Theatre Centre**.  
It's just one way we are helping to open doors for a more inclusive  
and sustainable tomorrow.

**td.com**



® The TD logo and other TD trade-marks are the property of The Toronto-Dominion Bank. M05636 (1019)

# Jones & Company

— WINE MERCHANTS —



1616 St.Mary's Road Winnipeg, Manitoba  
204.948.WINE (9463) | text a somm: 204.400.0499  
joneswines.com | wine@joneswines.com

## ROYAL MTC/MBA LAWYERS PLAY



The cast of *Picasso at the Lapin Agile*

# Merci, mes amis!

It was the perfect night for a cocktail in Paris as members of the Manitoba Bar Association presented *Picasso at the Lapin Agile* by Steve Martin. Our incredible cast took on the new challenge of a virtual reading with grace and humour as they shared this unique collection of characters with us on Friday, April 9 for the annual Lawyers Play.

Cast entirely with MBA members, the Lawyers Play is one of Royal MTC's largest fundraisers and since its inception in 1990 has raised over \$1,100,000 to ensure vibrant theatre remains accessible to all Manitobans. Now more than ever, your support of the Winnipeg Fringe Festival helps us continue to share exciting, independent theatre from across the globe.

An enormous thank-you to our patrons, donors, advertisers and sponsors for supporting our efforts. Royal MTC and the Winnipeg Fringe Festival would also like to extend sincere thanks to the talented cast and hardworking crew, as well as our wonderful committee members. ●

### CAST

David Dick  
Tashia Dreger  
Reid Girard

Benji Greenberg  
Danny Gunn  
Ashley Korsunsky

Jeff Palamar  
Jaime Rosin  
Neil Steen

Geoffrey Toews  
Maria Versace

Director: Michelle Boulet\*

### PRESENTING SPONSOR

PwC

### SILVER SPONSOR

Lawton Partners

### DINNER SPONSOR

WOW Hospitality

### WINE SPONSOR

Jones & Company  
Wine Merchants

### DESIGN SPONSOR


Relish New Brand Experience

### COMMITTEE

Melissa Hazelton - Chair  
Jason Gisser  
John Harvie  
Shawn Hughes  
Jessica Isaak  
Jamie Jurczak  
Stacy Nagle  
Jeff Palamar  
Nalini Reddy  
Stéphanie Tétreault

\*The participation of this Artist is arranged by permission of Canadian Actors' Equity Association under the provisions of the Dance • Opera • Theatre Policy.





There's  
always room  
for hope.

Space to explore.  
Stories to inspire.



CANADIAN MUSEUM FOR  
**HUMAN RIGHTS**

[humanrights.ca](http://humanrights.ca) |   

Canada

## SUPPORTERS



# Cheers to 100 Years, here's to another 100!

In 1921, The Winnipeg Foundation, Canada's first community foundation, was created and has helped our beautiful city thrive for the last century. Community foundations are public charitable organizations, built through generous gifts of all sizes that are pooled and permanently invested. The interest earned from these endowments generates a sustainable source of support for local charities like the Royal Manitoba Theatre Centre.

Since 1997, The Winnipeg Foundation had grown immensely under the guidance and leadership of Rick Frost, who is retiring this spring. During his tenure, we worked closely with The Winnipeg Foundation to establish the Royal MTC Endowment - Steven Schipper Fund as well as our legacy giving program, The Founders' Circle. Both programs provide vital and ongoing financial support for the work we do, and have been especially crucial since the pandemic shut down live performance more than a year ago. We would like to say a huge thank-you to Rick and wish him all the best in his retirement. We're also thrilled to congratulate and welcome Sky Bridges as he takes on the role of Chief Executive Officer!

At Royal MTC, we are extremely thankful for the generosity of so many Winnipeggers and the work of The Winnipeg Foundation to ensure that the spirit of giving has an ongoing impact on our organization and our community.

THANK YOU! ●



ENJOY THE SHOW.

# THE GATES ON ROBLIN

PROUD SPONSOR  
OF ROYAL MTC

204.224.2837  
[thegatesonroblin.com](http://thegatesonroblin.com)



## Your seat awaits.

Will you consider a gift to Royal MTC in your will?

Is Royal MTC already named in your will?

**We'd love to honour you as a member of  
the Royal MTC Founders' Circle.**

For more information on Legacy Giving, contact:  
Chris Turyk 204 954 6412 or [cturyk@royalmtc.ca](mailto:cturyk@royalmtc.ca)

ROYAL  
**MTC**  
MANITOBA THEATRE CENTRE

## SUPPORTERS

Many thanks to our donors  
who made a gift between  
Jan 1, 2020 and Apr 1, 2021.

### DIRECTOR'S CIRCLE

#### \$10,000+

Gail Asper, OC, OM, LLD\* &  
Michael Paterson  
Linda McGarva-Cohen &  
James Cohen  
Deborah Gray  
The Estate of Ellen Hirst  
June & Bob Jackson Memorial Fund  
for the Performing Arts - The  
Winnipeg Foundation  
Bernie & Rhonda Plett  
Hartley & Heather Richardson  
Jim & Leney Richardson  
Susan Glass & Arni Thorsteinson

#### \$6,500-9,999

David Christianson & Vera  
Steinberger  
Elizabeth Marr & Nick Slonosky  
Leslie John Taylor Fund - The  
Winnipeg Foundation

#### \$4,000-6,499

Pauline Braun - in memory of  
Duane Braun\*  
David & Lianne Carefoot  
Ms. Sophie Gaska  
Sara Gray  
Grace Man  
Leigh Murphy - in memory of  
Liam Murphy\*  
Jim & Janice Tennant  
Dr. Marcel Van Woensel

#### \$2,000-3,999

Dr. J Baluta & Ms. O. Kandia  
Dianne J. Beaven  
Craig McIntosh & Lorraine Beck Fund  
Todd & Judy Bourcier  
Dr. Bonnie Cham & Dr. Lorne Bellan  
David\* & Barb Christie  
Kerry Dangerfield\*\*  
Tony\* & Jennifer Fletcher\*  
John F. (Jack) Fraser\*  
Rita Gunn & Gregory Mason  
John\* & Nicola Guttormson\*  
Ahava Halpern & Frank Lavitt\*  
Linda Hamilton & Grange Morrow\*  
Camilla Holland\* & Colin Viebrock\*  
Houston Family of Bradwardine  
Fund - The Winnipeg Foundation  
Derek & Mary Johannson

David & Diane Johnston  
Kevin & Els Kavanagh  
Myron & Marion Klysh  
Dr. P. Kmet & Mr. B. Roslycky  
Serena Helen Kraayeveld Fund  
- The Winnipeg Foundation  
Laurie Lam\* & Larry Desrochers  
Jeff Neufeld & Katrina Lee-Kwen  
Carol & Barry McArton  
Jim\* & Penny McLandress\*  
Drs. Ken & Sharon Mould  
Vivienne Nickerson  
Scott Penner  
Mr. & Mrs. Lawrie & Fran Pollard  
Drs. Bill Pope & Elizabeth Tippett  
Pope Fund - The Winnipeg  
Foundation  
Sanford & Deborah Riley  
Maitland & Pat Sundmark  
Kelly Thornton\*\*  
Jeremy Trickett\* & Brandon Barnes  
Trickett  
Helga Van Iderstine\*  
Scott & Sonya Wright Fund

#### \$1,200-1,999

John Borger  
Sheldon & Penny Bowles  
Doneta Brothie, CM\* & Harry  
Brothie\*  
Haddera & Mark Chisick  
Heather Clarke\*  
Jan\* & Kevin Coates  
Ken & Lynn Cooper  
Ben & Shari Diamond  
Andrew Drinnan\*\*  
John Ekins  
Lawrence & Brenda Ellerby  
Sylvia Flam  
Katherine Fox\*\*  
Jack Fraser  
Susan\* & Ab Freig\*  
Sandy Gousseau\*\*  
Vivian Hilder-Skwark & David Skwark\*  
Shawn Hughes\* & Bruno Koehn\*  
Katie Inverarity\*\*  
Hon. Justice William Johnston  
Jason Kasper\*  
April & Diamond Kassum  
John Kearsey  
David\* & Ellen Kroft\*  
Katarina Kupca\*  
Donna & Dave\* Lalama  
Rick Lee & Laurie Shapiro  
Andrea Lochhead\*  
Gail Loewen  
Reginald & Judy Low  
Edward & Harriet Lyons Family  
Foundation  
Dr. Douglas MacEwan  
Mark & Gloria Mancini\*

Virginia Martin & the late Robert  
Martin  
Terri & Jim McKeerchar\*  
Dr. H. Nyhof & Jo-Anne Lutz  
Dr. & Mrs. Kieran O'Keefe  
Linda & Wayne Paquin  
M. Plett-Lyle  
K. Heather Power & Harold Klause\*  
Lawrence Prout\* & Lisa Gardewine\*  
Margaret Redmond\* & Greg Gillis\*  
Iris Reimer  
Mrs. Shirley Richardson  
Marlis Schroeder  
Jeff Sisler & Cathy Rippin-Sisler  
Logan Family Fund  
Ken & Susan\* Skinner  
Kevin Hines & Shelly Smith-Hines\*  
Bill & Laurie\* Speers  
Joan Stephens - in memory of  
Annice Stephens\*  
Shelley\* & Mark Stroski\*  
Sasha & Josh Thiem\*\*  
Rick & Claire\* Workman  
Richard L. Yaffe\* & John A. Statham  
Dr. Dorothy Y. Young  
2 Anonymous

### COMPANY CIRCLE

#### \$600-1,199

Robert & Ina Abra Family Fund -  
The Winnipeg Foundation  
Elizabeth Adkins  
Margaret & Jim Astwood  
Norma & Glenn Baldwin  
Ryan Bernier  
Bruce & Shelley Bertrand-Meadows  
Helga & Gerhard Bock  
Cathie & Brian Bowerman  
Phil & Charlotte Calnitsky  
Pam & Andrew Cooke  
J. Dawson  
Ernest & Ruth Epp  
Paulo Fernandes\*  
Ron Gaffray  
Barbara Hamilton  
Sylvia & Doug Hannah  
Gordon Hannon  
Gregg & Mary Hanson  
Gail Hechter  
N & L Holliday  
Jurgen & Glenda Kannwischer  
Laurence Katz & Zoë Kogan  
Roger & Brenda Kennedy  
Ian Kirk\*  
Peter Klippenstein  
Donna L. Korban & Family  
The Honourable Guy J. Kroft &  
Hester Kroft\*  
John & Roberta Lewis

\*Current Royal MTC Board of Trustees/Advisory Board members

\*\*Current Royal MTC staff

\*Monthly donors

## SUPPORTERS

Brian & Christie Lysack  
Mr. G. Markham  
Campbell & Lorraine McIntyre  
Greg & Gloria McLaren  
Marilyn & Robert Menzies  
Grant Mitchell & Cat Lambeth  
D. & G. Nytepchuk  
Kris Olafson\*  
Richard & Bonnie Olfert  
Cameron & Carole Osler  
Cam Mackie & Doris Mae Oulton  
Donna Plant  
Murray & Cindy Reimer  
David & Joan Rew  
Henriette Ricou & Jure Manfreda  
Barbara Scheuneman  
Shinewald Family  
Carol & Ron Slater Fund - Jewish  
Foundation of Manitoba  
Deborah Spracklin  
Gord & Lorena Trann  
Dr. Peter Triggs\*  
Vicki Verville\*  
Murray & Nancy Wiegand  
Margaret Wollner  
2 Anonymous

### \$250-599

Robert Adamson  
Brian Adolph\*\*  
Dawn Andersen  
D. T. Anderson  
Wayne & Lee Anderson  
Elizabeth B. Armytage Fund -  
The Winnipeg Foundation  
Dennis & Elaine Schultz  
Sheena Baird\*\*  
Earl & Cheryl Barish  
Larry Beeston & Anna Sikora  
Byrnes Benoit  
Mr. & Mrs. Ernest Bergbusch  
David Bergmann  
Bruce & Joyce Berry  
Ron Blicq  
Marnie Bolland  
Lilian Bonin & Daniel P. Levin  
Colleen & Stephen Bonner  
R. & D. Boroditsky  
Dr. Elizabeth Boustcha  
Bruce & Karen Boyd  
Ron & Joan Boyd  
Margaret Braid  
Billy Brodovsky & Libby Yager\*  
Sheila & David Brodovsky  
France Adams & Stephen Brodovsky  
Brian Brown  
Ellen & George Bruce  
Rita Burgess  
MacDonald/Cageorge Fund - The  
Winnipeg Foundation  
Teresa & Doug Cameron

Mr. & Mrs. B. Carruthers  
Tom & Louise Carson  
Rosemary Chapman  
Vanessa Warne & Brandon  
Christopher  
Kenneth Clark & Pamela Lockman  
Diane Coughlin  
Jim & Gwen Court  
Robert Coutts  
J. Crosthwaite  
A. Worley & P. Czaykowski  
Karen & Alan Dalkie  
Chris Darazsi\*  
J. Davidson\*  
Diana Dinon  
Margaret & Sylvia Docker  
Sharron & Joel Dudeck  
James Dugan & Mary Bawden  
Craig & Claudette Dunn  
Helene Dyck  
H. Dyck  
Roberta Dyck  
Glen\* & Joan Dyrda  
Mr. & Mrs. William Easton  
Dr. Michael Eleff & Chana Thau  
Dan & Lilianne Erickson  
Jemara Fay\*  
Gordon Flaten & Louise Pelletier  
Rietta Floom  
Christine Freeman  
Felicia & Trevor Frost  
Colleen & Dan Furlan\*  
Daniel Gagnon  
Lynne & Lindsay Gault\*  
Ms Heather Gillander  
Ben & Serky Goldberg  
Dr. & Mrs. Andrew Gomori  
Gary Goodwin  
Kayla Gordon & Art Maister  
Mintie Grienke  
Karen H. Guenther  
Sharon Hamilton\*  
Barbara Harrison  
Kathryn & Wayne Harrison  
Frank & Sue Hechter  
Rodney Hick & Tracey Jackson  
Dennis & Betty-lynn Hodgkinson  
Jennie Hogan  
Sarah & Richard Holland  
Michael & Crystal Hollas\*  
Ms Kathleen Hughes  
Therasa Hunt  
Robert Hykawy  
Dr. James C. & Muriel Jamieson  
Sylvia Jansen  
Margaret Jeffries  
Gerald Jewers - in memory of Claire  
Jewers  
Dr. Danielle & Mr. Brendan Roddy  
Lisa Johnston\*  
James Tam & Katherine Jordan

Marilyn & Sheldon Joyal  
Joyal Felines  
Sheryl Kapitz & Aaron London  
Gerard Kennedy & Jane Hilderman  
Robert Kennedy & Claudette Leclerc  
Peter Kidd & Caryn Douglas  
Peter Kingsley  
Betty Klassen  
Shan Dickson & Andrea Kneale  
Julie Ann Kniskern  
Denise & David Koss  
Carol Campbell & Andy Krentz  
Brenda & Trevor Kriss\*  
Howard & Jane Kroeger  
Kerry & Janet Kruger  
Randie & Jan Kushnier  
Richard Lambert  
Desiree Lavallee\*\*  
John & Heather Lea  
Helen Leeds  
Tim Preston & Dave Ling  
Chris Loepp  
Linda & Ray Loewen  
Pat & Jim Ludwig  
Tom Lussier  
Peter & Maureen Macdonald  
Neil & Elaine Margolis  
Gerry Matte & Lydia Surasky-Matte  
Ron McKinnon / Peggy Barker  
John & Carolynne McLure Fund  
- The Winnipeg Foundation  
Barry McNabb\*  
Donald G. McNabb  
Brian Macri & Nancy McQuade  
Barb Melnychuk  
Albert & Judith Metcalfe\*  
Jim & Karren Middagh  
Carolyn Garlich & Peter Miller  
Gloria Moodrey  
Margaret & Fred Mooibroek  
Sagan Morrow\*\*  
Cathy Moser & Jeff Itzkow  
Suzanne & Kenneth Munroe  
Tracey Novak  
Melissa Novecosky\*\*  
Marie Ohta  
Joanne Olchowecki  
Kristen H. Pachet  
Jeff Palamar  
Murray Palay & Ivy Kopstein  
Myron Pawlowsky & Susan Boulter  
Maryam & Izzy Peltz Fund - Jewish  
Foundation of Manitoba  
Jo-Anne & Harvey Peltz  
Fred Goeke & Layna Penner  
Linda & Rob Pettit  
Rick Pinchin  
Jocelyn Pitsch  
Keith Powls  
Jocelyne Prefontaine  
Ms Judith Putter

\*Current Royal MTC Board of Trustees/Advisory Board members

\*Current Royal MTC staff

\*Monthly donors

## SUPPORTERS

John & Marilyn Rae  
 Carole Rankin\*  
 Dr. Martin Reed & Joy Cooper  
 Brad Regehr & Nalini Reddy  
 Vance & Bev Rehill  
 Cheryl Reid  
 Joy Reimer  
 Jean Riggall  
 Andrea & Michael Robertson\*  
 Gary & Heather Robson  
 Gail MacAulay & Kevin Rollason  
 Jay & Andria Ross  
 Michael T. Ruta  
 Eduard Ryabinov  
 Cathy & Paul Samyn  
 Harald & Vicki Schulz  
 Ms Faye Scott  
 Gary & Darcia Senft  
 Jewish Foundation of Manitoba -  
 in memory of Sybil Shack for the  
 benefit of MTC  
 Diane Shapiro  
 Kumar Sharma  
 Louise Shaw  
 Shayna & Merrill Shulman  
 Ms. Judy Nichol & Dr. Jim Skinner  
 Mrs. Lorraine Smith  
 Marlene Stern  
 Nancy Streuber  
 Eleanor Suderman  
 Mary Ann Supleve  
 Mr. & Mrs. Paul Swart  
 Karen Tereck - Welcome to  
 Winnipeg Inc.  
 Leah R. Janzen & Ian R. Thomson  
 Jen & Kevin Tomanek  
 B. Baydock & W. Tretiak  
 Grant Tweed  
 Mrs. Heather Tymoschuk  
 Dr. & Mrs. M. B. Vodrey  
 Stirling Walkes  
 The Gordon family  
 Donald Wardrop  
 Colleen Webb  
 Mary Agnes Welch  
 Lionel & Lorraine Wiens  
 Kathy Gough & Tim Wildman  
 Catherine Wilkie  
 Leslie Wilson  
 Dennis & Gustine Wilton  
 Klaus Wolf  
 Klaus & Dorit Wrogemann  
 Raymond & Louise Wyant  
 Landice Yestrau  
 Olga & Roman Zubach  
 14 Anonymous

### \$150-249

Elena Anciro  
 Bernice Antoniuk  
 Lynne Arnason  
 Peter Attwood  
 Nadine Audet  
 Michel & Danita Aziza  
 Ian Backus  
 Richard & Nancy Ball  
 Richard Bartlinski  
 Karen & John Bate  
 James & Dawn-Lynne Bedford  
 Trish Bergal  
 Keevin & Faren Bernstein  
 Trust Beta  
 Edwin M. Bethune  
 Joan Blight  
 John & Marilyn Bourbonnais  
 Derek Boutang  
 Barry Bradley  
 Robert Briercliffe  
 Jackie & Steve Broda-Milian  
 Gerald R. Brown  
 Ken & Denise Brown  
 Terry Bruneau  
 Sean & Melanie Bueckert  
 Giles Bugailiskis & Margo Foxford  
 Ken England & Gerri Burge  
 John Burrows  
 Gerald & Carmen Butler  
 Enid Butler  
 Donna Byrne  
 Gus\* & Diane Campbell  
 Dr. Lloyd & Marian Campbell  
 Ken & Elizabeth Carroll  
 Lorraine Chatel  
 Shelley Chochinov  
 Katherine Cobor & Gordon Steindel  
 A son's Tribute to Berdie & Irvin  
 Cohen-Flow Through Fund  
 Agnes & John K. Collins  
 Donna Collins  
 Sarah Corley  
 Susan Cormack  
 Greg Cox  
 Ray & Brenda Crabbe  
 Roy & Marie Craig  
 Drs. Kristen Creek & Josh Manusov  
 Bradley J. Curran  
 J. Dale  
 G. L. Damphousse  
 Darryl & Shelley Day  
 Doug De Graff  
 Diane de Rocquigny  
 Sheila Domke & Stephen Ross  
 Sheila Down  
 Nancy & Brian Drad  
 John & Ada Ducas  
 David & Barbara Ediger\*  
 Greg Edmond & Irene  
 Groot-Koerkamp

John Edwards & Wendy Stelko  
 Charlotte Enns  
 Ken & Lesley Enns  
 Marion Fellingner  
 Kate & Tim Fennell  
 Nelma Fetterman  
 Jo-Anne Findlay  
 Gayle Fischer  
 Beverley & Ronald John Fitzpatrick  
 Lawrence Foster\*  
 Pamela & Kevin Friesen  
 Paul Daeninck & Monica Furer  
 Gloria & Rick Gallant  
 Frank Filbert & Linda Garwood-Filbert  
 Bill & Sharon Glanville  
 Alicyn Goodman\*  
 Michele Goossen\*  
 Moira Graham  
 Ms Mavis E. Gray  
 Derryl Hall  
 Bruce & Judy Harris  
 Joanne Harris  
 Ken & Ruth Hayes  
 Sandra Hebert  
 Evelyn Hecht  
 Mary Heindle  
 David & Mary Hickling  
 Ted & Cathy Hlynsky  
 Rob & Jen Hochkiewicz\*  
 John & Lenore Hodge  
 Ann Hodges  
 Kathryn Hofley  
 Barbara Holliday  
 K & A Horne  
 Ken Houssin  
 Carol & Ian Hughes  
 Jeremy Hutsebaut  
 Jean Hyrich  
 Mrs. Kadri Irwin  
 G. C. Irwin-Kilfoyle  
 Brenda Jenkyns  
 Lynne Jentsch  
 Robert & Karen Johnston  
 Brian & Renee Kaplan  
 Dr. Arvind & Nancy Kati  
 Joan Kennedy  
 Karen Klym & Roger Suss  
 Paul & Tamara Kochan  
 Ms Julie Koehn  
 William Kops  
 Jacki & Sheldon Koven  
 Lorraine Kraichy\*  
 Sarah Kredentser & David Lowen  
 Paula Kristjanson Hasiuk  
 Gene & Janet Lacroix  
 Teena Laird  
 Lisa & Ted Landrum  
 Barbara Latocki  
 Bryen Lebar & Patricia Sauder\*  
 Bob Leggett  
 Kathy & Saul Leibl

\*Current Royal MTC Board of Trustees/Advisory Board members

\*Current Royal MTC staff

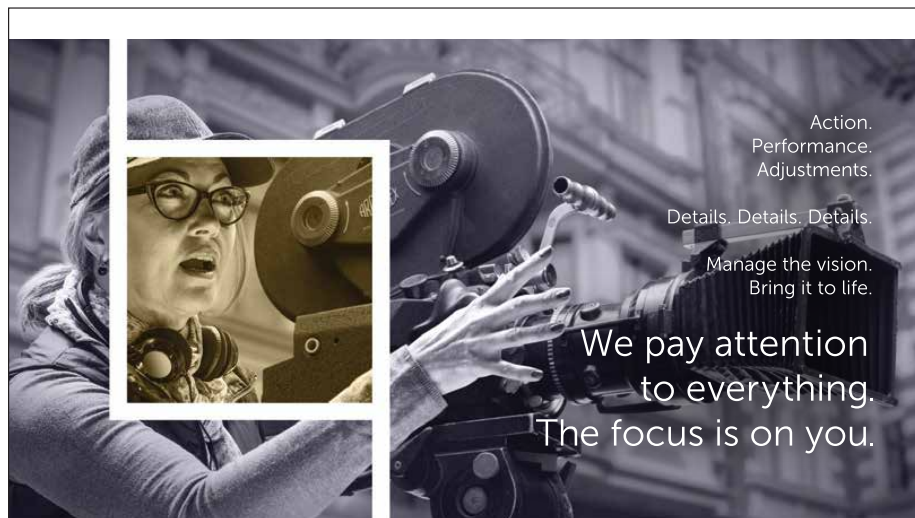
\*Monthly donors

## SUPPORTERS

Tim & Kate Letkemann\*  
 Stephanie Levene  
 Lilian Bonin & Daniel Levin  
 Paige Lewis  
 Stan & Susan Lipnowski  
 Dr. Karen Lischka  
 Teresa Lopata & Bruce Wagg  
 Jean Lothian  
 Sarah Luby  
 Maylene & Israel Ludwig  
 Carole Lupkowski  
 Joan Macdonald  
 Tamara Mares  
 Agatha Massey  
 Cheryl & Eric Matheson  
 Linda Matheson  
 Shirley Matile  
 Roxana Mazur  
 Bob & Betty McCamis  
 Marie McCarthy  
 Catarina Mello Schultz  
 Mario Mendizabal  
 Loretta Merriam  
 Susie Miclash  
 Dr. & Mrs. M. Mollot  
 Tom Mooney  
 Allison Moore  
 Ryan & Ewa Morphy  
 Kathy Mulder  
 Leanne Nause & Family  
 Marika Nerbas  
 Helen Norrie

Tom Nowicki  
 Linda Olson  
 Cynthia Orris  
 James & Georgina Palmquist  
 Paulette Pappel  
 Sonya & Derek Penner  
 Brian Perchaluk - in memory of  
 Sue Goff  
 Donald & Elaine Peters  
 Sandra Phillips  
 Denise Plett  
 Bill & Margaret Podolsky  
 Linda & Michael Radcliffe  
 Angeline Ramkissoon  
 Linda Ratynski  
 Lorraine & Ernest Reinfort  
 Mr. & Mrs. William Reynolds  
 Louis Ricciuto\*  
 Roslyn Roberts  
 Denise Robitaille  
 Renee Roseman  
 Dora Rosenbaum  
 Olga A. Runnalls\*  
 Barbara Ryan  
 Sandy Sager  
 Carol Scurfield  
 Ray & Leanna Senez  
 Blake Shiaro  
 Dr. & Mrs. A.M. Shojania  
 Debbie Shymko  
 Jennifer Skelly & Family  
 Peter & Geri Spencer

Elaine Mordoch  
 June Steiner  
 Darlene Stepanik  
 Donni & Diana Stern  
 Heidi Struck\*  
 Lorne Sunley  
 Karen Swain  
 Mr. Greg Swintak  
 Ross & Bette-Jayne Taylor  
 Lois Tessier  
 Sharon Timson\*  
 Malcolm & Shirley Tinsley  
 Karen Tjaden  
 Alex Todd  
 Jonathan Toews  
 Liana Toews  
 D & L Toews  
 Terry & Cathy Tully  
 S. Tunstead  
 Chris Turyk\* & Bryce Weedmark\*  
 C & J Ukelic  
 Helmut & Gwen Waedt  
 Carrie Wai  
 Jane & Don Walters\*  
 Paul & Laura Walton  
 Bob & Sherry Ward  
 Peter & Joan Washchyschyn  
 Lois & Henry Wedel  
 Tamara & John Wells  
 Al & Pat Wherrett\*  
 Debra Wiens  
 John T. & Justina Wiens



Action.  
 Performance.  
 Adjustments.

Details. Details. Details.

Manage the vision.  
 Bring it to life.

We pay attention  
 to everything.  
 The focus is on you.

You belong in the company of leaders.  
[lawtonpartners.ca](http://lawtonpartners.ca)

 **Lawton Partners**  
 WEALTH MANAGEMENT

## SUPPORTERS

Reed & Arla Winstone  
Grant & Sheila Woods  
Martina Wuersch & Craig Wray  
Allan & Alice Young  
21 Anonymous

### SPONSOR

The Asper Foundation  
The Gail Asper Family Foundation  
Assiniboine Credit Union  
Bell MTS  
BMO Financial Group  
Canada Life  
Culligan Water  
Deloitte  
Dycom Direct Mail Services  
Esdaile Printing Co. Ltd.  
Fillmore Riley LLP  
Friesens Corporation  
The Gates on Roblin  
Gendis Inc.  
The Great Canadian Travel Group  
HUB International  
IG Wealth Management  
Jones & Company Wine Merchants  
Lawton Partners  
Manitoba Liquor & Lotteries  
McDiarmid Flowers  
McNally Robinson Booksellers  
Patent 5  
RBC Foundation  
RE/MAX  
Relish New Brand Experience  
Richardson GMP - The Tanchak  
Wealth Management Group  
Sleeman Breweries Ltd.  
Stantec Consulting Ltd.  
Strat+ Advisory Services  
Taylor McCaffrey LLP  
TD Bank Group  
Wawanesa Insurance  
Wellington-Altus Private Wealth  
The Winnipeg Foundation  
The Winnipeg Free Press

### CORPORATE DIRECTOR'S CIRCLE

#### \$25,000+

Johnston Group Inc.  
Richardson Foundation

#### \$5,000-9,999

Cambrian Credit Union  
The Albert D. Cohen Family Fund  
PwC

#### \$3,000-4,999

Terracon Development Ltd.

#### \$1,200-2,999

Arthur J. Gallagher Insurance and  
Risk Management  
Astroid Management Ltd.  
Domo Gasoline Corporation Ltd.,  
Kate M. Everett, President  
Fillmore Riley LLP  
Manitoba Blue Cross  
Manitoba's Credit Unions  
Maple Leaf Construction Ltd., Blake  
Fitzpatrick  
Maxim Truck & Trailer  
Pollard Banknote Limited  
PRA Inc.  
Qualico  
Safeway & Sobeys

### CORPORATE COMPANY CIRCLE

#### \$600-1,199

Red River Co-operative Ltd.

#### \$300-599

Acuity HR Solutions  
MCW/AGE Consulting Professional  
Engineers  
Mid West Packaging Limited  
Premier Printing Ltd.

#### \$150-299

Diamond Gallery  
Funseekers Ladies Travel  
Gautron Management Services Inc.  
Intergroup Consultants Ltd.  
Patil/St. James Insurance

### FOUNDERS' CIRCLE

Wayne & Lee Anderson  
Gail Asper, OC, OM, LLD\*  
Zdzislaw (Zaz) Bajon & Patricia Hunter  
Marjorie & Morley<sup>§</sup> Blankstein  
Duane<sup>§</sup> & Pauline Braun  
Doneta Brothie, CM\* &  
Harry Brothie  
Ken Brown  
David & Lianne Carefoot  
Len & Heather Cariou  
Terri Cherniack & Steven Schipper,  
CM, OM  
Jennifer Cheslock & George Buri  
David Christianson & Vera  
Steinberger  
David\* & Barb Christie  
Gerry & Chris Couture  
Hugh B. Cowan  
Kerry Dangerfield\*  
Laurie Lam<sup>†</sup> & Larry Desrochers  
Glen\* & Joan Dyrda  
Robert & Florence Eastwood  
Don & Elsie Elias  
Bill<sup>§</sup> & Gayle Fischer  
Anthony\* & Jennifer Fletcher  
Jack Fraser  
James Gibbs<sup>§</sup>  
Sandy\* & Rheel Gousseau  
Rita Gunn & Greg Mason  
John\* & Nicola Guttormson  
Ahava Halpern & Frank Lavitt  
Linda Hamilton & Grange Morrow  
Gary Hannafor<sup>†</sup> & Cathy Rushton  
Ted<sup>§</sup> & Gail Hechter  
Elaine Heinicke<sup>§</sup>  
June<sup>§</sup> & Bob Jackson Fund for the  
Performing Arts  
Maureen E. Jay  
Andrew & Wendy Jensen  
David & Diane Johnston  
Dr. Leonard & Hope<sup>§</sup> Kahane  
Janis Kaminsky  
Jason Kasper\*  
John Kearsey  
Gordon & Anne Keatch<sup>§</sup>  
Rob Kennedy & Claudette Leclerc  
Serena Helen Kraayeveld  
Leona J. MacDonald  
Cheryl Johansson<sup>§</sup> & Michael  
Mainman  
Mark & Gloria Mancini  
Virginia Martin  
Peggy Barker & Ron McKinnon  
Jim\* & Penny McLandress  
Barb Melnychuk  
Bob & Pat Migliore  
Jeffrey Morton\*

\*Current Royal MTC Board of Trustees/Advisory Board members    †Current Royal MTC staff    ‡Monthly donors    §Fondly Remembered  
If you have remembered Royal MTC in your will, please let us know.

## SUPPORTERS

Ken & Sharon Mould  
Dr. Liam Murphy<sup>§</sup>  
Robb & Heather Paterson  
Chris Pearce  
Scott Penner  
Gina & John\* C. Petersmeyer  
Drs. Bill Pope & Elizabeth  
Tippett-Pope  
K. Heather Power & Harold Klause  
Margaret Redmond\* & Greg Gillis  
Edward Fisher & Lyse Rémillard  
Joan D. Richardson  
Michelle Rowan  
Sharon Ryman  
Susan Skinner\*  
Kevin Hines & Shelly Smith-Hines  
Bill & Laurie\* Speers  
Joan Stephens  
Ms. Joanne Tait  
Suzanne Ullyot  
Lionel & Lorraine Wiens  
Richard L. Yaffe\* & John A. Statham  
Brenda Zaporzan<sup>§</sup>  
2 Anonymous

### ENDOWMENT - STEVEN SCHIPPER FUND

Many thanks to the generosity of our Endowment Fund donors who gave a gift or fulfilled a pledge payment between Jan 1, 2020 and Apr 1, 2021. Amounts are cumulative.

#### \$5,000,000+

Government of Canada/  
Gouvernement du Canada  
Canadian Heritage/Patrimoine  
canadien

#### \$250,000-499,999

Gail Asper, OC, OM, LLD\* &  
Michael Paterson

#### \$100,000-249,999

Marjorie Blankstein CM, OM, LLD  
Royal Manitoba Theatre Centre  
Volunteer Corps of Ushers  
The Leigh & Liam Murphy Family  
Fund

#### \$25,000-49,999

Susan Glass & Arni Thorsteinson  
Cam & Carole Osler  
Terracon Development Ltd.

#### \$10,000-24,999

The Bowles Family  
Susan & Keith Knox  
Norma Anne Padilla  
L. Blair Philpott & Tom Kynman  
George Sigurdson

#### \$5,000-9,999

Margaret Caie  
Helene Dyck  
Robert & Margaret Ferguson  
Gail Hechter  
Gina O'Connor & John C.  
Petersmeyer\*  
Jim & Jan Tennant  
Dr. Dorothy Y. Young

#### \$2,500-4,999

Don & Cheryl Breakey  
Sheila & David Brodovsky  
Ron & Carol Chapman  
Pam & Andrew Cooke  
Hyman & Esther Dashevsky\*  
Michael & Lynn Evans  
Brent & Debbie Gilbert  
David & Ewenia Gnutel  
John & Margaret Graham  
Peter & Maureen Macdonald  
Irene Miller & the late Claire Miller  
Anonymous

#### \$1,000-2,499

Joan & Edward Alexander  
Jack Armstrong & Doris Quinn  
David & Pamela Bolton  
Jan\* & Kevin Coates  
Bob & Alison Darling  
Dorothy Davidson  
Roberta Dyck  
Brenda & Michael Evans  
Christine Freeman  
Teresa A. Hay  
Martha Henry  
Jordan Janisse & Teresa Cooper  
Donna & Dave\* Lalama  
Barbara Main  
Peggy Barker & Ron McKinnon  
Estelle Meyers  
Paul & Elaine Neelon  
Jean & Lisa Neron  
Bill Rennie  
Marc & Sherri Rittinger  
Jim & Susan Shaw  
Beverley Vane & Bill Shepherd  
Howie & Sue Simpson  
Deborah Spracklin  
Rick & Claire\* Workman  
Anonymous

#### \$500-999

Joan & Edward Alexander  
Jack Armstrong & Doris Quinn  
David & Pamela Bolton  
Jan\* & Kevin Coates  
Bob & Alison Darling  
Dorothy Davidson  
Roberta Dyck  
Brenda & Michael Evans  
Christine Freeman  
Teresa A. Hay  
Martha Henry  
Jordan Janisse & Teresa Cooper  
Donna & Dave\* Lalama  
Barbara Main  
Peggy Barker & Ron McKinnon  
Estelle Meyers  
Jean & Lisa Neron  
Bill Rennie  
Marc & Sherri Rittinger  
Jim & Susan Shaw  
Beverley Vane & Bill Shepherd  
Howie & Sue Simpson  
Deborah Spracklin  
Rick & Claire\* Workman  
Anonymous

#### UP TO \$499

Ingrid Bolbecher  
John Burrows  
Nancy Latocki  
F. Lemieux  
Bob & Pat Migliore  
Edward Fisher & Lyse Rémillard  
Bryce & Jenna Simes  
Lorne Sunley  
Anonymous

### MANY THANKS TO OUR VOLUNTEERS!

\*Current Royal MTC Board of Trustees/Advisory Board members    †Current Royal MTC staff    ‡Monthly donors    §Fondly Remembered  
If you have remembered Royal MTC in your will, please let us know.



## FINAL BOW

*The Royal Manitoba Theatre Centre honours the passing of those dear to our theatre – people who've made a lasting contribution to this ephemeral art form.*



### Nancy Drake

A Winnipeg icon, Nancy Drake is fondly remembered for her performances on stages

across the province, and as a mentor and teacher to generations of actors and artists. At Royal MTC, Nancy performed in 25 shows, directed and taught in the Manitoba Youth Theatre program, and helped workshop many plays in development. Nancy once said she treated every audition as a single performance. That way, she was never disappointed. If she got the part, wonderful; if not, at least she knew she had given a great performance. Nancy taught her students the same: many created performances in her living room before auditioning for prestigious theatre schools around the world. Nancy is survived by her sister Bonnie, five children, five grandchildren, extended relatives, colleagues and friends in the theatre and film industry.



### Sue Groff

At Royal MTC, we will remember Sue for her brilliance, passion, and, over the winter holidays,

her legendary shortbread. For 33 years, Sue painted spectacular worlds on our stages as Head Scenic Artist. Offstage, she had a “heart of absolute gold,” describes long-time colleagues Kari Hagness and Larry Demedash. “She was a kind, generous and loyal friend.” Sue was passionate about nature and art. She spent summers at the lake

and in her garden. She enjoyed biking, paddling canoes, and volunteering for Save Our Seine Inc. Sue was not just an accomplished painter. She was a potter, arborist, and most recently, teacher in the Department of Theatre and Film at the University of Winnipeg. Sue will be lovingly remembered by her sisters, nieces and nephews, friends, and colleagues.



### Les Moore

Les Moore was a barrister, engineer, social activist, rigger, and vice-president of

IATSE Local 63. Despite a 2019 cancer diagnosis, Les remained active until he passed away in November of 2020 at age 68. He leaves behind his wife Kathy, son Kevin, daughters Jennifer and Alison, and three grandchildren. Les and Kathy built homes in Winnipeg and London, England. They moved to London after they married, and Les completed his Civil Engineering and Law degrees there. Eighteen years and three kids later, Les and Kathy returned to Winnipeg and Les started working in theatre. Royal MTC's Master Carpenter Brent Letain fondly remembers Les for his “uncanny ability to look like an unmade bed.” Les is grieved by his family, friends, coworkers and loved ones at Royal MTC and in Winnipeg. ●

Nancy Drake. NANCY DRAKE IN *OUR COUNTRY'S GOOD*. PHOTO BY B. MONK.

Sue Groff. PHOTO FROM WINNIPEG FREE PRESS PASSAGES.

Les Moore PHOTO FROM WINNIPEG FREE PRESS PASSAGES.





Proud supporter of the  
Royal Manitoba Theatre Centre.

**Bell**MTS

## SUPPORTING PARTNERS

### CORE FUNDERS



### SEASON PARTNERS



### JOHN HIRSCH MAINSTAGE PRODUCTION SPONSORS



### EXCLUSIVE PRODUCTION SUPPORTER



### DIGITAL PROGRAMMING SPONSOR



### JOHN HIRSCH MAINSTAGE PERFORMANCE SPONSORS



### NATIONAL MENTORSHIP PROGRAM



### THEATRE FOR YOUNG AUDIENCES



### OPENING NIGHT SPONSOR



### TINY PLAYS, BIG IDEAS



### REGIONAL TOUR



### THE BRIDGE: A FESTIVAL OF IDEAS



### PIMOOTAYOWIN CREATORS CIRCLE



## SUPPORTING PARTNERS

### BLACK & WHITE BALL AT HOME

#### GOLD SPONSORS

**FillmoreRiley**

**GENDIS INC.**

#### SILVER SPONSORS



**STRAT+ ADVISORY  
SERVICES**

**RICHARDSONGMP**  
THE TANCHAK  
WEALTH MANAGEMENT GROUP

#### LUXURY GIFT BOX SPONSOR

**IG WEALTH  
MANAGEMENT**

#### SILENT AUCTION SPONSOR

**PLETT AND ASSOCIATES  
WEALTH MANAGEMENT**

#### PERFORMANCE SPONSOR



#### WINE SPONSOR

**Jones & Company**  
— WINE MERCHANTS —

### LAWYERS PLAY



THE MANITOBA BAR ASSOCIATION  
L'ASSOCIATION DU BARREAU DU MANITOBA  
A Branch of the Canadian Bar Association  
Une division de l'Association du Barreau canadien



**Lawton Partners**  
WEALTH MANAGEMENT

### DESIGN SPONSOR

**Relish** Strategic  
Creative  
Interactive

### CAPITAL ASSISTANCE

**Canada**

THE  
WINNIPEG  
FOUNDATION  
**W**  
For Good. Forever.



MANITOBA  
CENTENNIAL CENTRE  
CORPORATION

### SEASON MEDIA SPONSORS

**Winnipeg Free Press**



### SUPPORTING SPONSORS

**Jones & Company**  
— WINE MERCHANTS —

**THE GATES**  
ON ROYAL



### WINNIPEG FRINGE THEATRE FESTIVAL



**Canada**

**Manitoba**



WINNIPEG  
ARTS COUNCIL



**THE  
EXCHANGE**  
DISTRICT BIZ



canada **life**

THE  
WINNIPEG  
FOUNDATION  
**W**  
For Good. Forever.

Money doing more.  
**Assiniboine**  
CREDIT UNION

**BellMTS**

**Relish** Strategic  
Creative  
Interactive

**Winnipeg Free Press**



# BEHIND THE SCENES

## BOARD OF TRUSTEES

### HONORARY MEMBERS

Her Honour, Lt. Governor Janice C. Filmon  
The Honourable Brian Pallister, Premier of Manitoba  
His Worship, Mayor Brian Bowman

### EXECUTIVE OFFICERS

John Guttormson, Chair  
David Christie, Past Chair  
Heather Clarke, Treasurer / Organizational Performance Chair  
Katherine Fox, Secretary  
Helga Van Iderstine, Audience Development Chair  
Laurie Speers, Governance & Strategic Planning Chair  
Linda McGarva-Cohen, Resource Development Chair

### TRUSTEES

Jan Coates	David Lalama	Jeremy Trickett
Susan Freig	Andrea Lochhead	Claire Workman
Shawn Hughes	Sagan Morrow	Richard L. Yaffe
David Kroft	Josh Thiem	

### ADVISORY COUNCIL

Anthony C. Fletcher, Chair	Charron Hamilton	Shelley Nimchonok
Gail Asper	Gary Hannaford, FCA	James Pappas
Doneta Brothie, CM	Yude Henteleff	John Petersmeyer
Angus Campbell	Ken Houssin	Lawrence Prout
Gerry Couture	Colin R. MacArthur, QC	Jeff Quinton
Kerry Dangerfield	Patrick J. Matthews	Patricia Rabson
Hy Dashevsky	Jim McLandress	Margaret Redmond
Glen Dyrdal, FCA	Jeffrey Morton, FCA	Susan Skinner
John F. Fraser	Hon. Jack Murta	Al Snyder
Jean Giguere	Lillian Neaman	Maureen Watchorn

## STAFF

### ACCOUNTING/FINANCE

Sherry Allard-Harber, Payroll Administrator  
Sharon Burden, Payroll Administrator  
Yvonne O'Connor, Accounts Payable Administrator  
Shelley Stroski, Controller

### ADMINISTRATION

Brian Adolph, IT Manager  
Camilla Holland, Executive Director  
Daphne MacMillan, Administrative Assistant  
Kathrin Moncaster, Senior Developer & Systems Administrator  
Nitasha Rajoo, Interim Education Manager  
Rachel Weessies, Director of Human Resources

### ARTISTIC

Audrey Dwyer, Associate Artistic Director  
Laurie Lam, Producer  
Melissa Langdon, Apprentice Artistic Director  
Ian Ross, Program Director, Pimootayowin Creators Circle  
Kelly Thornton, Artistic Director  
Kim Wheeler, Curator, The Bridge

### BOX OFFICE

Sheena Baird, Director of Patron Services  
Meaghan Fletcher, Assistant to the Director of Patron Services  
Box Office Representatives: Sharon Bunn, Melissa Langdon, Robyn Pooley, Katie Schmidt, Katie Spring, Lilian Talabis

### CARPENTRY (JOHN HIRSCH MAINSTAGE)

Brent Letain, Master Carpenter  
Chris Seida, Scenic Carpenter

### DEVELOPMENT

Lisa Hunt, Special & Donor Events Coordinator  
Michael Joyal, Development Data Manager  
Melissa Novacosky, Director of Development  
Chris Turyk, Development Manager

### MAINTENANCE

Andrew Drinnan, Building Superintendent  
Chris Fletcher, Assistant Building Superintendent

## MARKETING & COMMUNICATIONS

Sue Caughlin, Marketing & Communications Manager  
Katie Inverarity, Director of Marketing & Communications  
Desiree La Vallee, Ticketing Application Specialist  
Savannah Lillies, Marketing & Communications Coordinator

## PAINT

Carla Schroeder, Head Scenic Artist

## PRODUCTION

Christine Corthey, Production Associate  
Chris Coyne, Technical Director, John Hirsch Mainstage  
Zahra Larche, Assistant Production Manager  
Russell Martin, Director of Production

## PROPERTIES

Jamie Plummer, Head of Props  
Lawrence Van Went, Master Builder (on leave)

## STAGE CREW

Joan Lees-Miller, Head of Wardrobe  
Gary Plouffe, Head of Sound  
Claude Robert, Head Electrician  
Chris Thomson, Head Carpenter

## TOM HENDRY WAREHOUSE

Chris Brett, Head of Sound  
Randy Zyla Harder, Head Electrician

## WARDROBE

Thora Lamont, Head of Wardrobe  
Wig Van Winkle, Head Buyer & Accessories Coordinator

## WIGS

Beverley Covert, Wigs & Makeup Supervisor

## WINNIPEG FRINGE THEATRE FESTIVAL

Chuck McEwen, Executive Producer  
Tori Popp, Festival Manager

## HONORARY STAFF

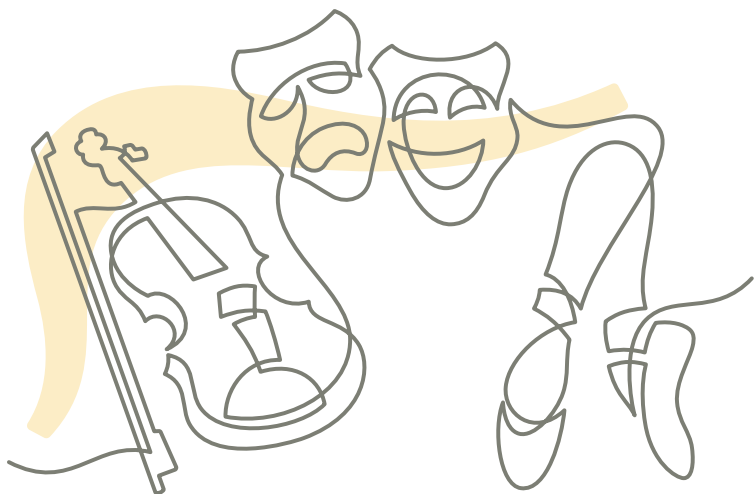
Zaz Bajon, General Manager Emeritus  
Steven Schipper, CM, OM, Artistic Director Emeritus

## ADDITIONAL PRODUCTION STAFF

Elena Anciro, Light Walker  
Jenna Brown, Video Programmer  
Louis Gagné, Carpenter & Stage Hand  
Ray Galinaitis, Carpenter & Stage Hand  
Shane Gowler, Stage Hand  
Christian Hadley, Light Walker  
Braiden Houle, Light Walker  
Doug Kiddell, Stage Hand  
Zoë Leclerc-Kennedy, Props Assistant  
Barbara Mackenzie, Seamstress  
Terry Mueller, Stage Hand  
Farrah Okolita, Scenic Artist  
Frank Palmer, Stage Hand  
Andrea Von Wichert, Scenic Artist  
Bernie Rondeau, Stage Hand  
Andrew Sanger, Light Walker

## FRANK DIGITAL

Chris McIvor, Executive Producer, Director of Photography  
Libby Lea, Producer  
Tanner Grywinski, Camera  
Braydon Musick, Camera  
Nathan Eides, Jib Operator  
Motion Graphics Artist, Darren Place  
Andrew Shire, Editor & Colourist



# Building creative communities and bright futures

Together, we can do  
more for Canadians, for  
each other and for the  
communities we love.



Stronger  
Communities  
Together™