

OVATION

ROYAL
MTC
MANITOBA THEATRE CENTRE

VOL 33 • NO 2
NOV/DEC 2025

JOHN
HIRSCH
MAINSTAGE



The Musical

Book by
Thomas Meehan
and Bob Martin

Music by
Matthew Sklar

Lyrics by
Chad Beguelin

Based upon the New Line Cinema film written by David Berenbaum

TOM
HENDRY
WAREHOUSE

A NUMBER

By Caryl Churchill



TOM HENDRY WAREHOUSE
SEASON SPONSOR

BMO





University
of Manitoba

≡ BISON ≡ UNCOVER WAYS TO PREVENT HEART FAILURE



During sleep, the body repairs itself for the day ahead. Dr. Lorrie Kirshenbaum's research shows that disruptions to the body's internal clock—such as those caused by irregular sleep and shift work—can weaken heart function. His team is also studying these effects in women, whose heart health has often been overlooked, to guide new therapies that keep hearts healthier, longer.

MESSAGE FROM THE ARTISTIC DIRECTOR



Kelly Thornton

I'm thrilled to welcome you to the theatre. While *Elf - The Musical*, our Mainstage offering, is sure to delight audiences throughout the holiday season, our production of Caryl Churchill's *A Number* at the Warehouse will feed the theatregoer who is looking for more edgy fare. Interestingly both plays deal with fathers and sons, identity and belonging, yet the exercise in comparison stops there. *Elf* is nothing but ridiculous good fun, while *A Number* is a brilliant psychological drama from one of the most exciting playwrights of the 20th century.

Caryl Churchill wrote *A Number* in 2002, and its themes of technology, ethics and humanity have triggered a revival across English-language theatre. Known for her daring and innovative

approach to social issues, Churchill skewers the possibility of human cloning – sensationalized in 1997 by the cloning of the first mammal, Dolly the Sheep. With the rise of AI, and the disastrous potential of technology on humanity, this play raises the alarm bells. At the centre, it is also about love, parenting and the mistakes we make along the way as we struggle to do our best amidst life's challenges.

In *Elf*, this father-son dynamic is central. As Buddy journeys to New York City to find his long-lost father, after he discovers he is human, he encounters a father whose failings are catching up to him. What I love about *Elf* is the beautiful innocence of Buddy as he encounters a disposable world driven by cynicism and commerce. While Buddy appears as a ridiculous and naïve oaf, his keen observation to how we have lost our way is spot on. We all need to reignite a sense of wonder, especially right now and 'tis the season after all.

While these two plays are at opposite ends of the spectrum, I am so excited to bring them to MTC, and hope you'll take them both in while they are on our stages.

Thanks for joining us, and enjoy the show!

A handwritten signature in black ink, which appears to read 'Kelly'.

Royal Manitoba Theatre Centre is proud to call Manitoba home. Royal MTC is located in Winnipeg on Treaty 1, the traditional territory of the Anishinaabeg, Inninewak, Anishinewak, Dakota Oyate and Denesuline, and the National Homeland of the Red River Métis. We are thankful for the benefits sharing this land has afforded us, acknowledge the responsibilities of the Treaties, and embrace the opportunity to partner with Indigenous communities in spirit of reconciliation and collaboration.

THEATRE ABBREVIATION LEGEND

A.C.T. American Conservatory Theater • San Francisco, CA	Rainbow Rainbow Stage • Winnipeg, MB
Arts Club Arts Club Theatre Company • Vancouver, BC	RNT Royal National Theatre • London, England
ATF Atlantic Theatre Festival • Wolfville, NS	Royal Alex The Royal Alexandra Theatre • Toronto, ON
ATP Alberta Theatre Projects • Calgary, AB	RSC Royal Shakespeare Company • Stratford-upon-Avon, England
BAM Brooklyn Academy of Music • NYC	RWB Royal Winnipeg Ballet • Winnipeg, MB
Bard on the Beach Bard on the Beach Shakespeare Festival • Vancouver, BC	Sarasvati Sarasvati Productions • Winnipeg, MB
Belfry The Belfry Theatre • Victoria, BC	Segal The Segal Centre for Performing Arts • Montreal, QC
Blyth Blyth Theatre Festival • Blyth, ON	Shaw Shaw Festival • Niagara-on-the-Lake, ON
Broadway Theatre district • New York, NY	SIR Shakespeare in the Ruins • Winnipeg, MB
CBC Canadian Broadcasting Corporation	Soulpepper Soulpepper Theatre Company • Toronto, ON
Centaur Centaur Theatre Company • Montreal, QC	Stratford Stratford Festival • Stratford, ON
Citadel The Citadel Theatre • Edmonton, AB	SummerWorks SummerWorks Theatre Festival • Toronto, ON
COC Canadian Opera Company • Toronto, ON	TA Theatre Aquarius • Hamilton, ON
CS Canadian Stage • Toronto, ON	Tarragon Tarragon Theatre • Toronto, ON
Dora Dora Mavor Moore Award • Toronto, ON	TBTR Theatre by the River • Winnipeg, MB
Drayton Drayton Entertainment • Ontario	TC Theatre Calgary • Calgary, AB
Dry Cold Dry Cold Productions • Winnipeg, MB	TiFT Talk is Free Theatre • Barrie, ON
Factory Factory Theatre • Toronto, ON	TNB Theatre New Brunswick • Fredericton, NB
GCTC The Great Canadian Theatre Company • Ottawa, ON	Toronto Free Toronto Free Theatre • Toronto, ON
Grand The Grand Theatre • London, ON	TPM Theatre Projects Manitoba • Winnipeg, MB
HGJT Harold Green Jewish Theatre Company • Toronto, ON	TSO Toronto Symphony Orchestra
Mirvish Mirvish Productions • Toronto, ON	U of M University of Manitoba
Moving Target Moving Target Theatre Company • Winnipeg, MB	U of T University of Toronto
MTYP Manitoba Theatre for Young People • Winnipeg, MB	U of W University of Winnipeg
NAC National Arts Centre • Ottawa, ON	ViC The Village Conservatory for Music Theatre • Winnipeg, MB
Necessary Angel Necessary Angel Theatre Company • Toronto, ON	VP Vancouver Playhouse Theatre Company • Vancouver, BC
Neptune Neptune Theatre • Halifax, NS	West End Theatre district • London, England
NFB National Film Board of Canada	WCT Western Canada Theatre • Kamloops, BC
NTS National Theatre School of Canada • Montreal, QC	WJT Winnipeg Jewish Theatre
Persephone Persephone Theatre • Saskatoon, SK	WSO Winnipeg Symphony Orchestra
PTAM Popular Theatre Alliance of Manitoba • Winnipeg, MB	WST Winnipeg Studio Theatre
PTE Prairie Theatre Exchange • Winnipeg, MB	YPT Young People's Theatre • Toronto, ON
	zone41 zone41 theatre • Winnipeg, MB

OVATION

VOLUME 33, NUMBER 2
NOVEMBER/DECEMBER 2025

Ovation is published six times per theatre season and has an approximate yearly circulation of 85,000.

PRINTING: Premier Printing Ltd.

ADVERTISING INQUIRIES

Christina Reuther
TELEPHONE: 204 954 6413
EMAIL: sales@royalmtc.ca



Royal Manitoba Theatre Centre
174 Market Avenue
Winnipeg, MB R3B 0P8
Canada

RoyalMTC.ca

BOX OFFICE: 204 942 6537
ADMINISTRATION: 204 956 1340
FAX: 204 947 3741

Royal MTC is a member of the Professional Association of Canadian Theatres and engages, under the terms of the Canadian Theatre Agreement, professional artists who are members of the Canadian Actors' Equity Association.

Scenery, Carpentry and Show Running Crew at the John Hirsch Mainstage and the Tom Hendry Warehouse are members of IATSE Local 63.

USHERS • Royal MTC's loyal volunteer ushers are available at every performance to assist patrons.

LATECOMERS • Latecomers will be seated at the discretion of the House Manager.

COURTESY TO OTHERS • Talking, candy wrappers and coughing are distracting to fellow patrons and actors. We ask each patron to please keep noise to a minimum during a performance. Thank you for your cooperation.

SCENTS AND ALLERGIES • A number of Royal MTC patrons have expressed concerns regarding medical reactions caused by scented products, so much so that they can't enjoy the show. Please consider others before using items such as colognes, perfumes and hairspray. Your thoughtfulness is appreciated.

HEARING ENHANCEMENT • FM Listening Devices are available free of charge in the lobby at the John Hirsch Mainstage and Tom Hendry Warehouse. Please see the House Manager for details.

PROHIBITED • The use of cameras and recording devices is strictly prohibited. Mobile devices must be turned off. To be contacted in an emergency, leave your name and seat number with the House Manager.

WARNINGS • On occasion, Royal MTC's productions may contain script-specific smoking of non-tobacco products, special effects and language/content warnings. For more information on specific productions, please visit royalmtc.ca.

NEXT AT THE JOHN HIRSCH MAINSTAGE

Agatha Christie's
**MURDER
ON THE
ORIENT EXPRESS**

ADAPTED FOR THE STAGE BY

KEN LUDWIG

In partnership with Citadel Theatre



JAN 14 — FEB 7

NEXT AT THE TOM HENDRY WAREHOUSE

In partnership with
Theatre Projects Manitoba

Holland

BY Trish
Cooper



SPONSORED BY

THE
ASPER
FOUNDATION

FEB 4 — 21

RoyalMTC.ca 204 942 6537

Backstage at Buddy's Workshop



*Pictured: Zoë Leclerc-Kennedy,
Assistant Head of Props*



Follow us for more behind-the-scenes content @mtcwinnipeg



SYNOPSIS – Buddy the Elf has always been a little bit different from the others at Santa's workshop. So, when Santa himself reveals that he is in fact not an elf, but a human – with a living father in New York City – Buddy sets off on a quest to meet the world's greatest dad. Like many living in The Big Apple, workaholic Walter Hobbs is the antithesis of Christmas spirit. With a high-stress job in publishing and an upcoming deadline, Walter's relationship with his wife, Emily, and young son, Michael, only grows more strained. Although Buddy's arrival comes as a shock to everyone in town, he does everything he can to win over his new friends and family, discover who he really is, and help a lonely city remember the true meaning of Christmas. ●

Elf - The Musical



Taylor McCaffrey is proud to be the opening night sponsor of Royal MTC and gratefully acknowledges the rich contribution made by Manitoba's Arts Community to our province.

TAYLOR
McCAFFREY
LAWYERS



At Lawton Partners, we guide our clients with insight and experience. We believe it's important to be leaders in our community as well as in business.

You belong in the
company of leaders.
lawtonpartners.ca

 **Lawton Partners**
WEALTH MANAGEMENT

PRESENTS

Elf – The Musical

Book by **Thomas Meehan and Bob Martin** Music by **Matthew Sklar** Lyrics by **Chad Beguelin**

Based upon the New Line Cinema film written by David Berenbaum

Originally produced by Warner Bros. Theatre Ventures in association with Unique Features

November 27 – December 28, 2025

PREVIEWS November 25 & 26

Director / Choreographer..... Julie Tomaino
Music Director..... Joseph Tritt
Set Designer..... Scott Penner**
Costume Designer..... Jessica Oostergo**
Lighting & Video Designer..... Hugh Conacher**
Sound Designer..... Chris Coyne
Fight Director..... Darren Martens
Assistant Director / Choreographer..... Rebekah Jones
Assistant Music Director..... Paul Rodermond
Apprentice Director..... Kyle Mroz*†
Apprentice Lighting & Video Designer..... Oak Girard*
Stage Manager..... Michael Duggan††
Assistant Stage Manager..... Samantha Desiree
Assistant Stage Manager..... Tori Popp†
Apprentice Stage Manager..... Carolin Schroeder†
Child Supervisor..... Matthew Paris-Irvine
Child Supervisor..... Sarah Gerbrandt

Elf – The Musical is performed with one intermission.

ELF – The Musical is presented through special arrangement with Music Theatre International (MTI).

All authorized performance materials are also supplied by MTI. www.mtishows.com

Any video and/or audio recording of this production is strictly prohibited.

Production photography by Dylan Hewlett.

**Indicated designers on this production are represented by the Associated Designers of Canada, IATSE Local ADC659

*Position funded through the Jean Murray - Moray Sinclair Theatre Apprenticeship Program

†Past Jean Murray - Moray Sinclair apprenticeship or scholarship recipient

††Past Naomi Levin Theatre Scholarship award winner

Elf – The Musical

THE CAST (IN ALPHABETICAL ORDER)

<i>Santa Claus / Mr. Greenway / Ensemble</i>	Daniel Bogart
<i>Buddy</i>	Ryan Brown
<i>Tiara / Ensemble</i>	Cassandra Consiglio
<i>Deb / Ensemble</i>	Victoria Exconde
<i>Sam / Ensemble</i>	Megan Fry
<i>Michael</i>	Xaiden Garcia
<i>Matthews / Ensemble</i>	Tiana Jung
<i>Emily</i>	Rochelle Kives†
<i>Charlie / Ensemble</i>	Tyler Leighton
<i>Walter</i>	Kevin McIntyre
<i>Ensemble</i>	Reid McTavish
<i>Chadwick / Ensemble</i>	Luke Opdahl
<i>Jovie / Ensemble</i>	Jade Repeta†
<i>Michael</i>	Alex Schaeffer
<i>Manager / Ensemble</i>	Joseph Seville
<i>Mrs. Claus / Ensemble</i>	Jillian Willems

UNDERSTUDIES

Understudies never substitute for listed performers unless a specific announcement is made at the time of their appearance.

<i>Walter</i>	Daniel Bogart
<i>Jovie, Deb</i>	Cassandra Consiglio
<i>Mrs. Claus</i>	Victoria Exconde
<i>Matthews</i>	Megan Fry
<i>Tiara, Sam</i>	Tiana Jung
<i>Chadwick</i>	Tyler Leighton
<i>Buddy</i>	Reid McTavish
<i>Manager, Charlie</i>	Luke Opdahl
<i>Santa Claus / Mr. Greenway</i>	Joseph Seville
<i>Emily</i>	Jillian Willems

Alex Schaeffer performs: Tue Nov 25 • Thu Nov 27 • Fri Nov 28 eve • Sat Nov 29 eve • Wed Dec 3 matinee
 Thu Dec 4 • Sat Dec 6 matinee • Sun Dec 7 • Tue Dec 9 • Wed Dec 10 eve • Fri Dec 12 • Sat Dec 13 eve
 Wed Dec 17 matinee • Thu Dec 18 • Sat Dec 20 eve • Sun Dec 21 • Tue Dec 23 matinee • Wed Dec 24
 Fri Dec 26 eve • Sat Dec 27 eve

Xaiden Garcia performs: Wed Nov 26 • Fri Nov 28 TFYA • Sat Nov 29 matinee • Tue Dec 2 • Wed Dec 3 eve
 Fri Dec 5 • Sat Dec 6 eve • Wed Dec 10 matinee • Thu Dec 11 • Sat Dec 13 matinee • Sun Dec 14 • Tue Dec 16
 Wed Dec 17 eve • Fri Dec 19 • Sat Dec 20 eve • Tue Dec 23 eve • Fri Dec 26 matinee
 Sat Dec 27 matinee • Sun Dec 28

*Position funded through the Jean Murray - Moray Sinclair Theatre Apprenticeship Program

†Past Jean Murray - Moray Sinclair apprenticeship or scholarship recipient

Elf – The Musical

YOUTH ENSEMBLE (IN ALPHABETICAL ORDER)

Pierson Alibudbud	Philip Paley
Zoé Gautron	Anastasia Rautert
Alicia Kliewer	Sophie Sewell
Nathan Malolos	Jada Tackie
Alba Manuel	Silver Tennant

MUSICIANS

Music Director / Keyboard 3	Joseph Tritt
Assistant Music Director / Keyboard 1	Paul Rodermond
Keyboard 2	Andrew St. Hilaire
Bass - Electric, Acoustic	Ruslan Rusin
Drums / Percussion.....	Brendan Thompson
Alto Sax, Clarinet, Flute, Piccolo, Tenor Sax.....	Sean Irvine
Bari Sax, Bass Clarinet, Bassoon, Clarinet, Flute....	Julie Husband
Trumpet / Flugelhorn	Matt Walden
Trombone.....	Joel Green
Contractor.....	Dave Lawton

MUSICAL NUMBERS

ACT I

Overture

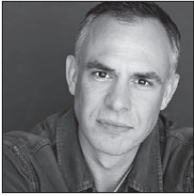
Happy All the Time.....	Santa Claus, Elves, Buddy
World's Greatest Dad.....	Buddy
In the Way.....	Deb, Walter, Emily, Michael, Ensemble
Sparklejollytinklejingley	Buddy, Jovie, Manager, Ensemble
I'll Believe in You	Michael, Emily
In the Way (Reprise).....	Emily, Walter
Just Like Him	Buddy, Deb, Walter, Ensemble
A Christmas Song.....	Buddy, Jovie, Ensemble
World's Greatest Dad (Reprise).....	Buddy, Ensemble

ACT II

Entr'acte

Nobody Cares About Santa.....	Buddy, Fake Santas
Never Fall in Love (With an Elf).....	Jovie
There is a Santa Claus.....	Michael, Emily
The Story of Buddy	Buddy, Michael, Walter, Emily, Mr. Greenway, Ensemble
Nobody Cares (Santa's Reprise).....	Santa Claus
A Christmas Song (Reprise).....	Buddy, Jovie, Emily, Michael, Walter, Ensemble
Finale	Full Company

ELF - THE MUSICAL



Daniel Bogart

*Santa Claus /
Mr. Greenway /
Ensemble*

Understudy: Walter

ROYAL MTC First appearance.

OTHER THEATRE *Les Misérables* (Broadway, National Tour); *Rock of Ages*, *Frozen*, *RENT* (Rainbow); *Guys and Dolls: In Concert* (WSO/Rainbow); *True West* (Theatre Raleigh); *The Ballad of Little Jo* (Steppenwolf Theatre Company); *Sweeney Todd* (Geva Theatre Center); *Phantom* (Music Theatre of Wichita); *Oklahoma!* (Paper Mill Playhouse). Assistant Director: *Les Misérables* (Maine State Music Theatre).

TV *The View* (ABC); *As the World Turns* (CBS); *Guiding Light* (CBS).

TRAINING B.F.A. from University of Cincinnati College-Conservatory of Music; M.S.Ed. from Bank Street Graduate School of Education.

ET CETERA Denver Post Ovation nomination for performance in *Les Misérables* (National Tour).



Ryan Brown

Buddy

ROYAL MTC First appearance.

OTHER THEATRE Selected: *Little Shop of Horrors*, *Elf - The Musical*, *The Rocky Horror Show*, *Beauty and the Beast*, *Shrek the Musical*, *The Addams Family* (Neptune); *Beauty and the Beast*, *Shrek the Musical*, *The Little Mermaid* (Globe); *The Wedding Singer* (Stage West); *Les Misérables* (Drayton); *Forever Plaid* (Orillia Opera House); *Spamalot* (Citadel).

FILM/TV *Overruled!* (Disney); *King of the Camp* (Bensondale).

TRAINING Sheridan Music Theatre - Performance Program 2011.

ET CETERA Love to my family, parents and sisters, thanks to The Talent House gang, and all the love in the world to my every-thing, Christine.



Cassandra Consiglio

Tiara / Ensemble

Understudy: Jovie, Deb

ROYAL MTC *Roadl Dahl's Matilda the Musical* (with Arts Club/Citadel), *Fun Home*.

OTHER THEATRE *RENT*, *West Side Story*, *The Little Mermaid*, *Mary Poppins*, *Annie*, *Joseph and the Amazing Technicolor Dreamcoat* (Rainbow); *Elf - The Musical*, *Teenage Dick*, *Smoky Mountain Christmas Carol* (Arts Club); *9 to 5 The Musical* (Citadel); *West Side Story* (CTORA); *Footloose*, *9 to 5 The Musical* (Chemainus Theatre); *The Prom* (Dry Cold); *Parade*, *Cabaret* (Raincity); *Something Rotten!* (TUTS).

FILM/TV *Schmigadoon!*, *Strawberry Shortcake*, *A Million Little Things*, *Channel Zero*, *Riverdale*.

EAT · EXPERIENCE · EXPLORE

Plan your next trip to *Prague*

**BON
ADVENTURE**
TRAVEL

bonadventuretravel.ca

204-488-6653

428 Academy Road,
Winnipeg, MB R3N 0C3



ELF - THE MUSICAL



Victoria Exconde

Deb / Ensemble

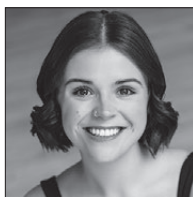
Understudy: Mrs. Claus

ROYAL MTC Waitress, Rizal Workshop.

OTHER THEATRE *Frozen*, *Rock of Ages*,
Mary Poppins, *Ma-Buhay!* (Rainbow);
Saplings (One Trunk Theatre); *Fame* (WST).

TV *Maria and the Mennos* (YESTV).

TRAINING/TEACHING Graduate of The
School of Contemporary Dancers and
danced with Nafro Dance Productions,
WSO, BOSS Dance Crew, and the Winnipeg
Blue Bomber Cheer and Dance Team.
Dance teacher at LA Dance Academy,
Meraki Theatre and Maples Collegiate.



Megan Fry

Sam / Ensemble

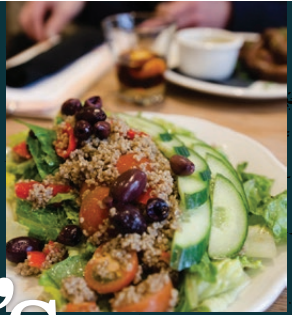
Understudy: Matthews

ROYAL MTC *Little Women*.

OTHER THEATRE *Billie and the Moon*
(MTYP); *Mary Poppins*, *The Little Mermaid*,
RENT, *The Wizard of Oz* (Rainbow); *The*
Prom (Dry Cold); *FAME the Musical* (WST);
Inhibition Exhibition, *Twelfth Night* (ViC).

TRAINING Village Conservatory, Royal
Winnipeg Ballet.

ET CETERA To my mama and brother,
dreams really do come true.



Kevin's

BISTRO

A vibrant dining experience in the heart of Winnipeg's Exchange District **with weekly live music!**

141 Bannatyne Ave., Winnipeg

For Reservations, visit opentable.com or call us at 204.221.5028

kevinsbistro.ca

CULINARY NIGHT AT THE MUSEUM

CELEBRATE "LOVE" WITH FABULOUS
FOOD BY CHEF LUC JEAN, IN A UNIQUE
SETTING - THE CANADIAN MUSEUM
FOR HUMAN RIGHTS

SATURDAY, FEBRUARY 14TH



FOR FURTHER
INFORMATION
AND TICKETS:



WOW!
CATERING

WOWCATERING.CA

Canadian Museum for
Human Rights

HUMANRIGHTS.CA

ELF - THE MUSICAL



Xaiden Garcia
Michael

ROYAL MTC First appearance.

TRAINING Xaiden trains in competitive musical theatre, jazz, ballet, tap, hip hop, lyrical and acro at Shelley Shearer School of Dance. He is a member of the Louis Riel School Divisional Treble Choir under the direction of Justin Odwak, and studies voice with Joy Lazo, Joseph Seville and Alyssa Crockett.

ET CETERA Xaiden is thrilled to be making his acting debut with Royal MTC as one of the Michaels in *Elf - The Musical*! When not performing, Xaiden enjoys giving back to the community by volunteering at the Winnipeg Fringe and “ringing bells” during the Salvation Army Kettle Campaign. He would like to thank his family, friends, coaches and mentors for their ongoing love and support. Enjoy the show!



Tiana Jung
Matthews / Ensemble
Understudy: Tiara, Sam

ROYAL MTC First appearance.

OTHER THEATRE *Jersey Boys* (Arts Club); *Footloose*, *Miss Bennet: Christmas at Pemberley*, *Jeeves at Sea* (Chemainus Theatre); *Heathers* (assistant choreographer - Studio 58); *On Native Land* (workshop - Urban Ink); *Cabaret* (Raincity Theatre).

TV *Wild Cards* (CBC); *So Help Me Todd* (CBS); *Motherland: Fort Salem* (Freeform).
Voiceover: *Psi Cops* (Adultswim/Corus); *Matchbox Adventures* (YouTube); *16 Hudson* (TVOKids); *Nina's World* (PBS Kids Sprout).

TRAINING Bachelor of Fine Arts in Drama/ Music Theatre from New York University Tisch School of the Arts.

ET CETERA Tiana is ecstatic to be making her Royal MTC debut! Endless gratitude to Julie, the creative team, cast and crew, Royal MTC, and to her ever-supportive family! tianajung.com / @tianamjung



Rochelle Kives
Emily

ROYAL MTC Actor: *Into the Woods*, *Calpurnia* (with NAC), *Where.Are.You.* *From* (Tiny Plays, Big Ideas). Apprentice Director: *Little Women*.

OTHER THEATRE *Rock of Ages*, *Mary Poppins*, *Ma-Buhay!*, *RENT*, *The Hockey Sweater*, *Little Shop of Horrors*, *South Pacific*, *Miss Saigon* (Rainbow); *The Prom*, *Kiss of the Spiderwoman* (Dry Cold); *A Year with Frog and Toad* (MTYP); *25 Questions for a Jewish Mother* (WJT); *South Pacific* (RSO, WSO).

FILM/TV *Christmas Commission* (Great American Family); *A Kiss Before Christmas* (Hallmark); *Larry Saves the Health Care System*.

TRAINING Graduate Sheridan College - Music Theatre Performance.

ET CETERA Rochelle is co-founder and producer of Unique3 and they travel as guest entertainers on cruise ships all over the world. Huge thank you to Julie, Joseph, Royal MTC and the entire *Elf* team! Thank you, 10 Talent. For Polly, the greatest gift in the world.

Manitoba Theatre for Young People PRESENTS

A
**MUSICAL
HOLIDAY
ADVENTURE**
FOR THE ENTIRE
FAMILY!

THE LIGHTNING THIEF

DEC
5-28

Tickets
start at
\$25

THE PERCY JACKSON MUSICAL

MTYP MAINSTAGE THEATRE BOOK BY **Joe Tracz** MUSIC & LYRICS BY **Rob Rokicki**

ADAPTED FROM THE BOOK *THE LIGHTNING THIEF* BY **Rick Riordan**

Percy Jackson has new powers he can't control, a destiny he doesn't want, and a mythology textbook worth of monsters on his trail. Recently discovering he is the son of a Greek god, Percy and his demi-god friends set out on a quest to find Zeus' missing lightning bolt and, hopefully, prevent a war.

SPONSORS



COOKIE PARTNER
TALL GRASS PRAIRIE
BREAD COMPANY



**tad &
birdy**

JAN 30
- FEB 7

An unlikely friendship between a bird-voiced tree frog tadpole and a lovebird inspires both of them to venture beyond the limitations placed on them.

Buy by phone 204.942.8898 • in person 2 Forks Market Rd • online mtyp.ca

ELF - THE MUSICAL



Tyler Leighton

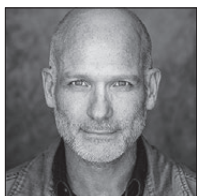
Charlie / Ensemble

Understudy: Chadwick

ROYAL MTC *A Christmas Story, Gypsy* (MBA Lawyers Play).

OTHER THEATRE *Disney's Frozen, Mary Poppins, The Little Mermaid, Mamma Mia!, Joseph and the Amazing Technicolor Dreamcoat, Peter Pan* (Rainbow); *A Chorus Line* (Rainbow/WSO); *Heathers* (WST). Other credits include Choreographing *Chicago* for the All Dentist Musical.

TEACHING Choreographer for the U of M Musical Theatre Ensemble, Instructor and Choreographer at Marquis Dance Academy.



Kevin McIntyre

Walter

ROYAL MTC *All is Bright* (2020).

OTHER THEATRE *Avrum* in *The Band's Visit*, *Man 2* in *Stars of David* (WJT); *Joe* in *Merrily We Roll Along*, *Gomez* in *The Addams Family* (Dry Cold); *Father Delisle* in *The Hockey Sweater*, *AJ Andrews* in *Strike! The Musical*, *Sam* in *Mamma Mia!*, *Josh* in *Big The Musical* (Rainbow); *Chris* in *Miss Saigon*, *Babet* in *Les Misérables* (Mirvish). Director: *Forever Plaid* 2008 (Rainbow).

FILM/TV TV: *Five Gold Rings, Snowkissed, Love Strikes Twice* (Hallmark); *Little Bird* (Crave/APTN); *The Spenser Sisters* (CTV). Film: *Psycho Killer, The Long Walk*.



Reid McTavish

Ensemble

Understudy: Buddy

ROYAL MTC First appearance.

OTHER THEATRE *Footloose, Mary Poppins, The Producers, The Little Mermaid, Diesel* in *West Side Story*, *Stacey Jaxx* in *Rock of Ages*, *Hans* in *Frozen* (Rainbow); *A Chorus Line, Guys and Dolls, The Music Man, The Hypochondriac, Julius Caesar* (Stratford); *Singin' in the Rain* (Capitol Theatre Port Hope).

ET CETERA Reid is excited to be making their Royal MTC debut working with such incredible artists. Thank you to family and friends for their support. Enjoy the show.



Luke Opdahl

Chadwick / Ensemble

Understudy: Manager, Charlie

ROYAL MTC First appearance.

OTHER THEATRE *Evita, Crazy for You, Elf - The Musical, Thoroughly Modern Millie, Beauty and the Beast, The Drowsy Chaperone, The Little Mermaid, Aladdin the Panto, Anne of Green Gables* (Drayton); *A Closer Walk with Patsy Cline, Step by Step, 9 to 5 The Musical, Priscilla Queen of the Desert* (Stage West Calgary); *Elf - The Musical* (TA); *The Jazz Singer* (HGJT); *Beauty and the Beast* (Capitol Theatre); *Anatomy of a Dancer* (Next Stage Festival).

TRAINING Graduate of the Randolph College for the Performing Arts.

ET CETERA Much love and thanks to his agents Stephen and Nicole at da Costa Talent, his loving family and his sweet Tomas. Enjoy the show!



MUNSCH
UPON A TIME

BASED ON THE STORIES BY
Robert Munsch

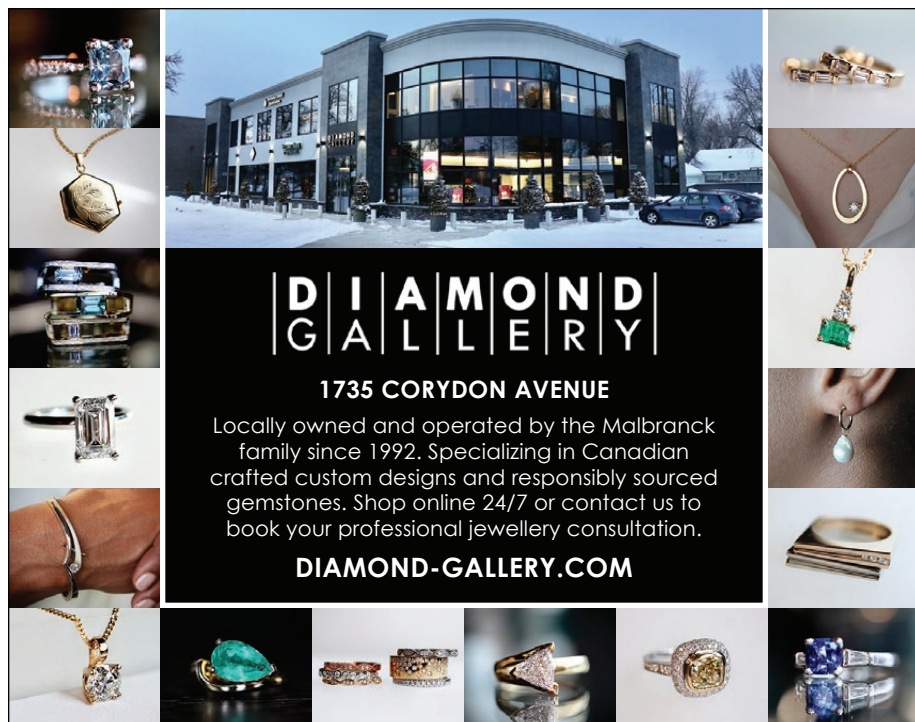
ADAPTED BY
Debbie Patterson

DEC 19, 2025 – JAN 3, 2026
Five Munsch stories brought to life.
A beloved PTE tradition returns!

 PRAIRIE
THEATRE
EXCHANGE



PTE.MB.CA



| D | I | A | M | O | N | D |
| G | A | L | L | E | R | Y |

1735 CORYDON AVENUE

Locally owned and operated by the Malbranc family since 1992. Specializing in Canadian crafted custom designs and responsibly sourced gemstones. Shop online 24/7 or contact us to book your professional jewellery consultation.

DIAMOND-GALLERY.COM

ELF - THE MUSICAL



Jade Repeta
Jovie / Ensemble

ROYAL MTC *Into the Woods, Cabaret, Billy Elliot the Musical.*

OTHER THEATRE Four seasons at Shaw; *Hairspray, Freaky Friday, Prom Queen* workshop (TA); *Portrait of a Collaboration: Little Pinks* (Stratford/Alan Menken); *The Little Mermaid, Mary Poppins, Footloose, Hairspray, The Sound of Music* (Rainbow); *Mary Poppins* (YPT); *Beauty and the Beast, Rock of Ages, All Shook Up, Footloose, Marathon of Hope, Anne of Green Gables* (Drayton); *Shrek* (Globe); *Mary Poppins* (Neptune).

TV *Less Than Kind Season 2* (HBO Canada); *Noonbory* (Dacapo).

TRAINING Graduate with Honours of Sheridan College's Music Theatre Performance Program.

ET CETERA Dora Nomination for Mrs. Brill in *Mary Poppins* (YPT). Merry Christmas, everyone!



Alex Schaeffer
Michael

ROYAL MTC *The Sound of Music.*

OTHER THEATRE *La Bohème, Carmen* (Manitoba Opera); *Twelfth Night, Romeo and Juliet, Bug Juice, Lost and Found, Barbie, Midnight* (Meraki Theatre); *The Best(?) Non-Denominational Holiday Concert Ever!, Butterfly Dream, Creating Rem Lezar* (Rem Lezar Theatre); *A Chorus Line, The Addams Family, Harry Potter and the Cursed Child, Once in a Lifetime* (Grant Park High School).

TRAINING Voice (Kelly Robinson); piano (Holly Harris). A recipient of the Conservatory Canada Medals for Excellence in voice performance.

ET CETERA Alex volunteers at the Winnipeg Fringe Festival and Winnipeg Folk Festival every summer and ushers at WJT, SIR, PTE and Rainbow Stage. Alex feels jolly and delighted to join the cast of this heartwarming holiday favourite!



Joseph Seville
Manager / Ensemble
Understudy: Santa Claus / Mr. Greenway

ROYAL MTC *The Wave, Evita* (with TC), *Billy Elliot the Musical*, 2021/22 National Mentorship Program.

OTHER THEATRE *Ma-Buhay! Frozen, The Little Mermaid, The Wizard of Oz, Beauty and the Beast, Cinderella, Breaking Up Is Hard to Do, West Side Story, Fame, A Chorus Line, Shrek, RENT, South Pacific* (Rainbow); *Miss Saigon* (Drayton); *Mamma Mia!* (Mirvish); *Beauty and the Beast* (TC); *American Idiot* (WST); *Pippin* (ViC/WST); *Altar Boyz* (PTE); *Danny, King of the Basement* (MTYP). Canadian Premieres: *Seussical* (YPT); *The Prom* (Dry Cold).

TV *Maria and the Mennos, Prison Dancer.*

TEACHING Shelley Shearer School of Dance, Kickit Sterling Lyon, Manitoba Theatre for Young People.

ET CETERA My performances will always be dedicated to my late parents Gregorio and Teresita Seville.



**Life's a journey.
Save for it.**

[SCU.MB.CA/SAVEFORIT](https://scu.mb.ca/saveforit)



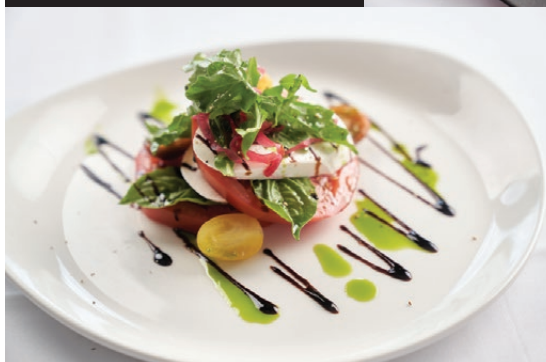
WOW!

CATERING



**PASSIONATELY
CRAFTED MENUS
AND CATERING FOR
ALL OCCASIONS**

[WOWCATERING.CA](https://wowcatering.ca)





Jillian Willems
Mrs. Claus /
Ensemble
Understudy: Emily

ROYAL MTC Mainstage: *Beautiful: The Carole King Musical* (Standby), *Into the Woods* (Choreographer). Lawyers Plays: *9 to 5 The Musical*, *The World Goes 'Round* (Director/Choreographer).

OTHER THEATRE Performance credits include: *Frozen*, *South Pacific*, *Cinderella* (Rainbow); *A Year With Frog and Toad*, *A Charlie Brown Double Bill* (MTYP); *Miss Shakespeare*, *Heathers* (WST); *Merrily We Roll Along* (Dry Cold); *Antigone* (Sick + Twisted/AA Battery). Creative credits include: *Afterlight* (The Keep/Rainbow); *The Band's Visit* (WJT); *Guys and Dolls* (Rainbow/WSO); *American Idiot* (WST).

TEACHING Jillian is an artistic associate and creative mentor with The Village Conservatory for Music Theatre. She is also the musical theatre teacher at Industria Dance Centre.

ET CETERA For my real-life Buddy, my joy-bringer, David.



Pierson Alibudbud
Youth Ensemble

ROYAL MTC First appearance.

OTHER THEATRE *Joseph and the Amazing Technicolor Dreamcoat* (Musical Theatre for Change); *Ma-Buhay! A New Musical* (Rainbow); *Riel: The Musical* (Jenna Larson Productions); *Neverland* (Meraki).

TRAINING Musical theatre, ballet and jazz (Shelley Shearer School of Dance).

ET CETERA Pierson is thrilled to be making his Royal MTC debut. Pierson loves playing volleyball, basketball, martial arts, and is extremely passionate about theatre, dance and singing. He would like to send a special thanks to his mom, dad, sister, grandparents and to all family, friends, and music and dance teachers for their love and support. He is excited and hopes you enjoy the show!



Zoé Gautron
Youth Ensemble

ROYAL MTC First appearance.

TRAINING Zoé is currently in her sixth year of competitive dance at Kids Etc Youth Movement Co.

ET CETERA Zoé is very excited to work with the amazing cast and crew at Royal MTC. Special thanks to all her instructors at Kids Etc Youth Movement Co. for believing in her and pushing her to be her best. She couldn't do this without the love and support of her amazing family!

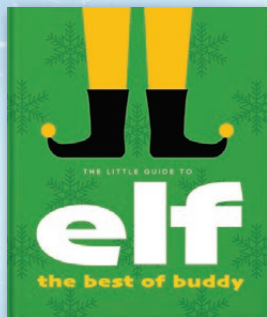




**M McNALLY
R ROBINSON**

Recommended Reading

inspired by *Elf – The Musical*



The Little Guide to Elf
by Orange Hippo!



Moon Song
by Michaela Goade



The Christmas Sweater
by Jan Brett

McNally Robinson Booksellers
1120 Grant Avenue • The Forks • mcnallyrobinson.com

WHEN YOU SUPPORT US, YOU SUPPORT OUR COMMUNITY



**M McNALLY
R ROBINSON**

ELF - THE MUSICAL



Alicia Klierer
Youth Ensemble

ROYAL MTC First appearance.

OTHER THEATRE *Beauty and the Beast* (BH).

TV Upcoming: *Independence/Little House on the Prairie* reboot (Netflix)

TRAINING Alicia has trained extensively in ballet, jazz, tap, acro, lyrical/contemporary, hip hop and musical theatre through the competitive and pre-professional programs at Shelley Shearer School of Dance.

ET CETERA Alicia is thrilled to be making her Royal MTC debut this season! She would like to extend heartfelt thanks to her Shelley Shearer School of Dance family, including all her dance teachers, friends and studio directors. Special thanks to Joseph Seville and Alyssa Crockett for their training, support and guidance throughout the years to help her get to this point. Thank you to Royal MTC for this opportunity!



Nathan Malolos
Youth Ensemble

ROYAL MTC *The Sound of Music*, *Roald Dahl's Matilda the Musical*, *Rizal* (workshop).

OTHER THEATRE Billy in *Billy Elliot the Musical* (Neptune); Roch Carrier in *The Hockey Sweater*, *Mary Poppins*, *Ma-Buhay! A New Musical*, *The Wizard of Oz* (Rainbow); *A Flicker of Light on a Winter's Night: a Christmas Concert* at Centennial Concert Hall (MTYP/WSO).

TRAINING Nathan trains in multiple dance genres and musical theatre at Sarah Daurie Dance Company.

ET CETERA Nathan is a competitive dancer who has earned multiple First Places, Overall Top awards, Special Judges' Choice awards, and scholarships at various dance competitions and conventions. He also earned gold and silver medals for junior jazz and tap solos at the Dance World Cup in Whistler, BC. Most recently, he placed in the Top 20 for Teen Male Best Dancer at The Dance Awards. Special thanks to all his dance teachers, Sarah Klymchuk and to Joy Lazo. Nathan is also deeply grateful to the cast and crew, friends and family for their continued support and encouragement.



Alba Manuel
Youth Ensemble

ROYAL MTC Louisa in *The Sound of Music*.

OTHER THEATRE *The Hockey Sweater*, *Ma-Buhay!* (Rainbow); *Midnight* (Meraki Theatre - Winnipeg Fringe Festival).

TV *Little Bird* (Crave).

TRAINING All styles of dance at Shelley Shearer, as well as various conventions across Canada and the US. Vocal coaching from Kelly Robinson.

ET CETERA Alba is so excited to be back for this Christmas season at Royal MTC. She's thrilled to be sharing the stage with so many friends (new and old) including her mentor Mr. Tyler who gave her a start in musical theatre, as well as her current teacher Mr. Joseph. Alba remains forever grateful for the never-ending love and support of her friends and family. The best way to spread Christmas cheer is singing loud for all to hear!

25
26
SEASON

DECEMBER 19-27, 2025
CENTENNIAL CONCERT HALL



PRESENTING SPONSOR



FORMER RWB DANCER SARKA SHIRAI (2007-2019)
BY DAVID COOPER, C.H. (2018)

Nutcracker



Tickets
from \$40
at rwb.org

**Bringing together the power of
our people and philanthropy
to help foster change, nurture
progress, and support local
communities.**

**Proud to support The Royal Manitoba
Theatre Centre and the Pimootayowin
Creators Circle.**

Through the TD Ready Commitment, we're supporting organizations focused on increasing access to art and cultural events and activities and that work to create opportunities for people to participate in shared experiences that reflect the diversity of their community.

Learn more at td.com/artsandculture

**TD READY
COMMITMENT**

© The TD logo and other TD trademarks are the property of The Toronto-Dominion Bank or its subsidiaries.



ELF - THE MUSICAL



Philip Paley
Youth Ensemble

ROYAL MTC First appearance.

OTHER THEATRE Winnipeg Fringe Theatre Festival: *The Best (?) Non-Denominational Holiday Concert Ever!* (Rem Lezar Theatre); *Little Red and the Werewolf* (All About Theatre Kids); *The Blabbermouth, the Puff Monster, and the Wolf* (Merlyn Productions).

ET CETERA Philip is passionate about theatre. He also loves travelling and swimming.



Anastasia Rautert
Youth Ensemble

ROYAL MTC *The Sound of Music*.

OTHER THEATRE *The Sound of Music* (SMA).

FILM/TV *The Best Christmas Pageant Ever*; *Christmas by Starlight*, *Sweet Autumn* (Hallmark).

TRAINING Sarah Daurie Dance Company, Joy Lazo, Expressions Film Studio, Bend Academy, MTYP, Rainbow Stage.

ET CETERA Anastasia is so excited and grateful to be part of her second production at Royal MTC. She would like to thank her parents, family, friends and teachers at SMA for their love and support. An extra special thank you to her vocal coach, Joy Lazo, and dance coaches, Sarah Klymchuk, Wayne Santos, Catherine Wreford, Melanie Botelho-Urbanski, for their amazing guidance and encouragement. Enjoy the show! Merry Christmas to all!



Sophie Sewell
Youth Ensemble

ROYAL MTC First appearance.

OTHER THEATRE Youth roles in *Hansel and Gretel* 2025, *Ballet in the Park* 2025, *Nutcracker* 2023 & 2024, *Snow White* 2023 (RWB); *The Impossible Has Already Happened* 2023 (MascallDance/Footnote New Zealand Dance).

TRAINING Sophie is in grade four and studies ballet, jazz, tap, musical theatre, lyrical, hip hop and acro at Canada's Royal Winnipeg Ballet School.

ET CETERA Special awards: Adapt tap and jazz exams, Cecchetti ballet exams, several solo awards and placements at competitions, plus "Tiny Technician" award and convention scholarship winner. Special thanks to Nicole Kepp, Cheyenne Schroeder, Claudia LaChance, all her teachers at RWB school and her Mom.



Jada Tackie
Youth Ensemble

ROYAL MTC First appearance.

TRAINING Shelley Shearer School of Dance and Anansi School for Performing Arts.

ET CETERA Jada is thrilled to be making her Royal MTC debut and is thankful to her family, friends, and teachers for all their love and support.



Empowering
creative
young minds

Proudly supporting
Royal Manitoba Theatre Centre

Canada Life and design are trademarks
of The Canada Life Assurance Company.

canada  TM

ELF - THE MUSICAL



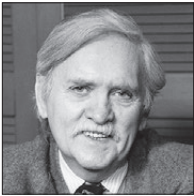
Silver Tennant
Youth Ensemble

ROYAL MTC First appearance.

FILM Background roles in several films.

TRAINING Dance at Sarah Daurie Dance Company (her most important and influential training, shaping her both as a dancer and as a person), voice with Joy Lazo, acrobatics at Bend Academy, currently attending Linden Christian School.

ET CETERA Silver has achieved numerous recognitions and awards for her dance performances. Her artistic journey has taken her across Canada, the US and Europe, where she has shared her love of performing internationally. She is grateful to her teachers and mentors for their encouragement and inspiration, and thanks her family for their constant love and support. She looks forward to continuing to grow as a performer.



Thomas Meehan
Book

Thomas Meehan received the Tony Award for co-writing the book for *The Producers* in 2001 and in 2003 for co-writing the book for *Hairspray*. He received his first Tony Award in 1977 for writing the book of *Annie*, which was his first Broadway show, and has written the books for the musicals *Rocky*, *Elf - The Musical*, *Cry-Baby*, *Young Frankenstein*, *Chaplin*, *Bombay Dreams*, *I Remember Mama*, *Ain't Broadway Grand* and *Annie Warbucks*. In addition, he was a long-time contributor of humor to *The New Yorker*, an Emmy-Award winning writer of television comedy, and a collaborator

on a number of screenplays, including Mel Brooks' *Spaceballs* and *To Be or Not to Be*. Thomas was also a member of the Council of the Dramatists Guild. He and his wife, Carolyn, divided their time between a home in Nantucket and an apartment in Greenwich Village, near which, on Hudson Street, she owned and presided over the long-running and near-legendary children's store Peanut Butter & Jane.



Bob Martin
Book

Bob Martin has been working as an actor and writer in Canadian theatre, film and television for over three decades. He has had a long association with the Toronto Second City, where he co-wrote and performed in four Second City revues, directed three, and had a stint as Artistic Director. He is a co-creator of *The Drowsy Chaperone*, and has performed in many of its incarnations including Ahmanson Theatre (Los Angeles), Marquis Theatre (Broadway), Novello (London). Bob has won a number of awards including an LA Drama Critics Circle Award, an LA Stage Alliance Ovation Award, a Drama Desk Award, a Theatre World Award and a Tony Award. He is also co-creator of the critically acclaimed dramatic series *Slings & Arrows*. Recent TV includes *Michael: Tuesdays and Thursdays 1 & 2* (CBC); *Sensitive Skin 1 & 2* (HBO); and *Elf: Buddy's Musical Christmas* (NBC). Recent theatre includes *Elf* (Broadway); *Minsky's* (Ahmanson LA); and in dev., *Gotta Dance*, *The Sting* and *Millions*. Bob reunited with *Elf* collaborators Matthew Sklar and Chad Beguelin to create the new musical *The Prom*, which ran on Broadway at the Longacre Theatre and was nominated for seven Tony Awards, including Best Musical.

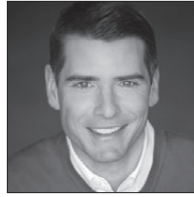
ELF - THE MUSICAL



Matthew Sklar

Music

Matthew Sklar is a two-time Tony, Emmy, Drama Desk and Outer Critics Circle Award-nominated composer. He wrote the music for the Broadway musicals *The Prom* (seven Tony nominations), *Elf - The Musical* and *The Wedding Singer* (five Tony nominations). He received a Primetime Emmy nomination for NBC's *Elf: Buddy's Musical Christmas* and contributed to the Emmy-winning documentary *Marvin Hamlisch: What He Did For Love* (PBS). His original songs have been featured on *Sesame Street*, *Wonder Pets!*, and NBC's Macy's Thanksgiving Day Parade. Matthew's music has been performed by stars such as Meryl Streep, Josh Groban, Nicole Kidman, James Corden, Jennifer Hudson, and Julie Andrews. At 18, he began playing keyboards for *Les Misérables*, eventually conducting by age 21. He's worked on numerous Broadway shows, including *Shrek the Musical*, *Caroline, or Change*, *Nine* and *Miss Saigon*. He also appeared on Broadway in *42nd Street*. Matthew's honors include the Frederick Loewe Award, ASCAP's Richard Rodgers Award and the Jonathan Larson Award. He studied at Juilliard (Pre-College), Tanglewood and NYU. He is a proud member of the Dramatists Guild and ASCAP.



Chad Beguelin

Lyrics

Chad Beguelin is a four-time Tony Nominee whose works include Disney's *Aladdin* (Tony Award Nomination for Best Book and Best Original Score, Drama Desk Award Nomination for Outstanding Lyrics and Best Book) and *The Wedding Singer* (Tony Award Nomination for Best Book and Best Original Score, Drama Desk Award Nomination for Outstanding Lyrics). He also wrote the lyrics for the Broadway musical *Elf*. His play *Harbor* premiered off-Broadway at Primary Stages. Chad also wrote the book and lyrics for *Judas & Me* (NYMF Award for Excellence in Lyric Writing); *The Rhythm Club* (Signature Theater); and *Wicked City* (American Stage Company). Chad reunited with *Elf* collaborators Matthew Sklar and Bob Martin to create the new musical *The Prom*, which ran on Broadway at the Longacre Theatre and was nominated for seven Tony Awards, including Best Musical. He is the recipient of the Edward Kleban Award for Outstanding Lyric Writing, the Jonathan Larson Performing Arts Foundation Award, the Gilman & Gonzalez-Falla Musical Theater Award and the ASCAP Foundation Richard Rodgers New Horizons Award. Chad is a graduate of New York University's Tisch School of the Arts Graduate Dramatic Writing Program.



Enrich Your Experience!

Do you want to delve deeper into the themes of the play? For every show we release an enrichment guide with help from experts and educators. This guide offers background context, resources to explore and discussion questions to keep the conversation going. Read them at royalmtc.ca/enrichmentguides.

For a complete list of theatre abbreviations, please refer to legend on page 4

ELF - THE MUSICAL



Julie Tomaino
*Director /
Choreographer*

ROYAL MTC First engagement.

OTHER THEATRE (selected) *Anne of Green Gables, Sense and Sensibility* (Stratford); *Jersey Boys* (Citadel, Arts Club, Thousand Islands Playhouse, Tweed); 9 to 5 (Chemainus, Port Hope, Citadel, Thousand Islands Playhouse); *Once* (Thousand Islands Playhouse, Citadel); *Pollyanna* (Aquarius); *Million Dollar Quartet, Titanic* (Grand); *Buddy Holly* (Globe); *Elf, Beautiful, Kinky Boots* (Arts Club); *Billy Elliot, Margaritaville* (TC); *Liars at a Funeral* (Port Stanley); *Full Monty* (Neptune, Port Hope).

FILM/TV (selected) Choreographer: *Christmas at the Movies* (LifeTime MOW); *Holly Hobbie S3* (Hulu/Family Channel); *Beaches* starring Idina Menzel (LifeTime TV).

TEACHING Sheridan College, AMDA NYC, Randolph College and Capilano University.

ET CETERA Dora and Jessie Award winner for Outstanding Choreography; former Radio City Rockette; thank you to Kelly, Izzy, Leslie, Rebekah, Joseph, Mike, Paul, Kyle, Scott, Jess, Hugh, Chris, Darren, the team at MTC and entire company of *Elf*. Upcoming: *JCS* (Magnus); *Come From Away* (Grand); *Sister Act* (Drayton).
julietomaino.com | @julietomaino



Joseph Tritt
Music Director

ROYAL MTC Music Director: *Once* (with Grand), *Billy Elliot the Musical, Cabaret*. Apprentice Music Director: *Next to Normal*.

OTHER THEATRE (selected) Music Director: *Les Misérables, The Producers* (Rainbow); *Freaky Friday* (TA); *Lucky Stiff* (Drayton); *Merrily We Roll Along, A Man of No Importance* (Dry Cold); *Altar Boyz* (PTE); three pantos for Ross Petty Productions. Composer/Sound Designer: *Man and Superman, The Madness of George III* (Shaw).

TRAINING/TEACHING University of Manitoba (BMus); Manhattan School of Music; Shaw Festival Music Direction Internship. Three years as a sessional instructor at Sheridan College. Currently completing an MA in Counselling Psychology.

ET CETERA Joseph is grateful to collaborate with such an extraordinary group of artists onstage, offstage and in the pit. Special thanks to the music team (Rodermond, Andrew, Dave), Julie, my parents and Shaun.



Try our *Elf*-themed ice cream by Fête in the lobby before the show and at intermission! Featured flavours include:

- Candy Cane Forest
- Santa's Milk and Cookies
- Gingerbread Smile
- The World's Best Cup of Coffee

Or try our featured cookie:

- Buddy's 5 Food Groups

Available in the
THEATRE
and
served at
Torque taproom,
restaurants
and Liquor Marts.

TORQUE BREWING

CRAFTING TRUST IN EVERY BREW.



Jones & Company
— WINE MERCHANTS —



Shop Local, Globally.

1616 St. Mary's Road Winnipeg, Manitoba
204.948.WINE (9463) | Text a Somm: 204.400.0499
joneswines.com | wine@joneswines.com



Scott Penner
Set Designer

ROYAL MTC *Indecent.*

OTHER THEATRE *Job* (Broadway, Helen Hayes Theater); *Casey and Diana* (Neptune); *Waitress, Hair* (Grand); *Dion, A Rock Opera* (Coalmine Theatre); *Guys and Dolls* (Arts Club); *Fireflies, Intimate Apparel* (Northlight Theatre Chicago); *Who's Afraid of Virginia Woolf?* (Flint Rep); *Rasheeda Speaking* (Jeff Award Nomination - Shattered Globe Chicago); *Shirley Valentine, The Extinction Therapist* (TA); *Shakespeare's Will* (Indiana Rep); *Cymbeline* (Stratford); *A Raisin in the Sun, Love's Labour's Lost, The Merry Wives of Windsor* (American Players Theatre); *Gently Sinking* (Prague Quadrennial); *Body Politic, A Few Brittle Leaves* (Buddies in Bad Times); *Small Mouth Sounds* (Theatre Works Colorado Springs); *Billy Bishop Goes to War, The Drowning Girls* (Globe Theatre, Regina).

TV Assistant Costume Designer: *Station Eleven* (HBO MAX); *Five Days at Memorial* (Apple TV).



Jessica Oostergo
Costume Designer

ROYAL MTC *The Sound of Music* (with Citadel).

OTHER THEATRE Recent: *The Handmaid's Tale* Opera (Banff Arts Centre); *Die Walküre* (Edmonton Opera); *Heist* (Grand/Citadel); *A Streetcar Named Desire* (Citadel/TC); *Ring of Fire, The Legend of Georgia McBride* (Arts Club); *Sunrise Betties* (ITSAZOO); *Dance Nation, Bunny, Stupid F*cking Bird* (Search Party); *Julius Caesar* (Bard on the Beach).

ET CETERA Jessica is a Set and Costume Designer from Vancouver and a new resident of Edmonton. Her design work has been seen on stage and screens across North America. Jessica worked as the Assistant Head of Wardrobe for Bard on the Beach for seven seasons, and taught Design Foundations and Set Design at Studio 58. She is a three-time Jessie Richardson Award Winner with a total of seven nominations, and is a graduate of Studio 58 and Emily Carr University of Art + Design. Visit jessicaostergo.com.



Hugh Conacher
Lighting & Video Designer

ROYAL MTC (selected) Lighting & Video Designer: *The Lehman Trilogy, The Mountaintop, Vietgone, Venus in Fur*. Video Designer: *Network* (with Citadel). Lighting Designer: *King James, Indecent, Little Women, The Recipe* (with TPM), *among men* (with TPM), *Beautiful: The Carole King Musical* (with Segal), *The Secret to Good Tea, Into the Woods, New, Orlando, Women of the Fur Trade, Fun Home, The Color Purple* (with Citadel), *Kill Me Now* (with NAC), *Seminar* (with Mirvish), *Dry Lips Oughta Move to Kapuskasing* and many other productions since the '80s.

OTHER THEATRE Hugh collaborates with choreographers, visual artists and dance and theatre companies worldwide.

ET CETERA Hugh enjoys working beyond the constraints of traditional lighting design using various forms of interactive media, video and photography. His photographic work resides in private collections and has been published worldwide. Hugh is a member of the Associated Designers of Canada and L'Association des professionnels des arts de la scène du Québec. www.pellucid.me.



DISTINCTIONS

RARE AND EXCEPTIONAL



YOU HAVE DISCERNING TASTE

Distinctions offers access to a selection of the world's most exceptional spirits and wines. We invite you to explore our hand-picked collection and take home that rare find today.



DISCOVER DISTINCTIONS
LiquorMarts.ca/Distinctions



Chris Coyne
Sound Designer

ROYAL MTC Waitress, *The Mountaintop*, *Into the Woods*, *Calpurnia* (with NAC/Black Theatre Workshop), *The (Post) Mistress*, *Fun Home*, *Kill Me Now* (with NAC), *The Hound of the Baskervilles* 2016 (Tour). Head of Sound (2022-2024) and Technical Director (2018-2022) at the John Hirsch Mainstage.

OTHER THEATRE Chris has had the pleasure of working with many local and international theatre groups. Credits include *Routes* 2016/17 Tour (MTYP); *The Hound of the Baskervilles* Mar. 2015, *Little Thing*, *Big Thing* Sep. 2015 (PTE); *EDEN* 2013 (Sarasvati); *Bashir Lazhar* Mar. 2013 (TPM); *Angels in America* 2012, *Perestroika* 2014 (WJT); *Three Sisters* 2011 (zone41).

TRAINING Chris is a graduate of the Ontario Institute of Audio Recording Technology.

ET CETERA Chris has been involved in the theatre industry in Winnipeg for many years and now manages the new Desautels Concert Hall on the University of Manitoba campus.



Darren Martens
Fight Director

ROYAL MTC Fight Director: *The Secret to Good Tea*, *New*. Assistant Fight Director: *The Rez Sisters*. Actor: *Beautiful: The Carole King Musical*, *The Three Musketeers*, *Miss Bennet: Christmas at Pemberley*, *A Christmas Carol*, *Alice Through the Looking-Glass*.

OTHER THEATRE Fight Director: *Volare* (PTE). Actor: *Jersey Boys* (Arts Club); *The*

Three Musketeers (Citadel/Arts Club); *A Chorus Line*, *Beauty and the Beast*, *Cinderella*, *Little Shop of Horrors*, *Les Misérables*, *The Producers* (Rainbow); *Another Way Home* (WJT); *A Little Night Music*, *The Addams Family* (Dry Cold); *Reefer Madness*, *American Idiot*, *Avenue Q* (WST); *Danny and the Deep Blue Sea* (The Keep Theatre).

FILM Actor: *Psycho Killer* (New Regency); *Polarized* (Enlightenment Productions); *Christmas by Starlight*, *Merry and Bright* (Hallmark).

TRAINING Fight Directors Canada Intermediate Level, Bachelor's in Vocal Performance from the U of M, Rainbow Stage Training Intensive.

ET CETERA Darren dedicates this performance to his late father, Gary.



Rebekah Jones
Assistant Director /
Choreographer

ROYAL MTC Actor: *Billy Elliot the Musical* (Lesley). Creative Team: *Urinetown* (Lawyers Play - Choreographer), *Murder for Two* (Movement Director). Assistant Director/Choreographer: *Fun Home*, *Into the Woods*.

OTHER THEATRE Actor: *Wizard of Oz*, *Mamma Mia!* (Rainbow). Choreographer: *The Prom* (Dry Cold). Apprentice/Assistant: *The Addams Family*, *Kiss of the Spider Woman*, *A Man of No Importance* (Dry Cold); *Les Misérables*, *Shrek the Musical* (Rainbow).

TEACHING Intro to Dance for Musical Theatre (U of W); Kickit Dance Studio.

ET CETERA Thank you to my family and to the Kickit directors for their continued support.

WITH GFL, THERE IS NO TOIL AND TROUBLE.



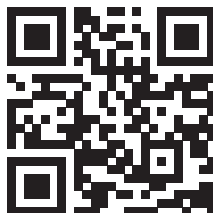
GFL Environmental is proud to support the
Royal Manitoba Theatre Centre and the Arts.
Our diverse service offerings include solid waste management,
recycling services, and hazardous waste collection.

Green Today. Green For Life. | gflenvironmental.com

SIGN UP AND CHOOSE YOUR WELCOME OFFER UP TO \$250*

Visit PlayNow.com/mb/register or scan the QR code
for details. Offer expires March 31, 2026.

*Conditions apply.



**CASINO
SPORTS
LOTTERY**

18+ | ENJOY
RESPONSIBLY



ELF - THE MUSICAL



Paul Rodermond

Assistant Music
Director

ROYAL MTC Music Director: *Murder for Two*. Assistant Music Director: *The Sound of Music* (with Citadel).

OTHER THEATRE Music Director: *Rock of Ages* (Rainbow); *White Christmas* (Drayton); *Tell Me on a Sunday* (Magnus); *Fame*, *SpongeBob the Musical* (WST); *And I Never Stopped Dancing* (Smile Theatre); *A Closer Walk with Patsy Cline*, *Rock 'n' Fables* (Stephenville Theatre Festival). Assistant MD: *Mary Poppins* (Rainbow). Alternate Conductor: *The Little Mermaid*, *RENT* (Rainbow). In the pit: *White Christmas*, *Damn Yankees*, *A Year with Frog and Toad*, *1922* (Shaw); *Into the Woods* (Opera on the Avalon).

TRAINING Shaw Festival music directing internship 2022; M. Mus. University of Manitoba.

ET CETERA Principal Keyboard of the Thunder Bay Symphony.



Kyle Mroz

Apprentice Director

ROYAL MTC First engagement.

OTHER THEATRE Child Supervisor: *Frozen*, *Mary Poppins* (Rainbow). Assistant Director: *Munsch Upon a Time* (upcoming - PTE); *Midnight* (Winnipeg Fringe/Meraki Theatre); *Seussical*, *Frozen Jr*, *Shrek the Musical* (STC).

TRAINING/TEACHING Training: Graduate of the University of Winnipeg's Theatre & Film program. Teaching: MTYP, Meraki Theatre, Rainbow Stage.

ET CETERA Recipient of the Jean Murray - Moray Sinclair Scholarship. Kyle is so proud of his past students in this show. Thank you to the team at Royal MTC, all my amazing mentors, and Mom and Dad for all the love and support. Enjoy the show!



Oak Girard

Apprentice Lighting
& Video Designer

ROYAL MTC First engagement.

OTHER THEATRE *Seasons of Love* - 2025, *Just Friends* - 2024 (Winnipeg Fringe); *Greased Lightning* - 2025, *Mamma Mia!* - 2025 (Destination Dinner Stage); *Inhibition Exhibition* - 2023-2025 (ViC).

TRAINING Bishops University.

ET CETERA Oak works full time as a lighting/video technician for festivals and live events across the city and province.



ELF - THE MUSICAL



Michael Duggan
Stage Manager

ROYAL MTC (selected) Stage Manager: *The Play That Goes Wrong* (with Citadel/TC), *The Comeback*, *The Mountaintop*, *Clue* (with Grand), *Into the Woods*, *New, Calpurnia* (with NAC/BTW), *Vietgone* (with fu-GEN/Hope and Hell), *Hand to God*. Assistant Stage Manager: *Burning Mom*, *The Color Purple* (with Citadel), *A Christmas Carol*. 2022/23 National Mentorship Program.

OTHER THEATRE (selected) *Gnit*, *Major Barbara* (Shaw); *The Nutcracker* (RWB); *The Little Mermaid* - 2023, *The Wizard of Oz* - 2022 (Rainbow Stage); *Space Girl*, *The War Being Waged* (PTE); *The Winter's Tale/Le conte d'hiver* (SIR/TCM); MTYP's *Midwinter Mosey* (MTYP); *The Flying Lovers of Vitebsk* (WJT); *Meet Me at Dawn* (TBTR).

TRAINING B.A. (Hons) in Theatre Production and Stage Management at the University of Winnipeg.

ET CETERA Enjoy the show!



Samantha Desiree
Assistant Stage Manager

ROYAL MTC ASM: *Casey and Diana* (with TA), *Clue* (with Grand). Apprentice SM: *Yaga*, *Into the Woods*, *Network*, *The Rez Sisters*, *Orlando*.

OTHER THEATRE SM: *Merrily We Roll Along* (Dry Cold); *Hansel & Gretel*, *Castor et Pollux*, *Mansplaining Division* (MUO); *Looking Glass*, Season Launch 22/23 (WCD). ASM: *Bring It On: The Musical* (The Globe);

Narnia (Bad Hats/MTYP). Apprentice SM: *The Wizard of Oz* (Rainbow). Apprentice Lighting Designer: *Narrow Bridge* (WJT). Production & Tour Coordinator: *Seven Visions* digital school tour (Saravati). Associate Producer/Sound Design: *Othello* (Echo). SM/Production Assistant: *FemFest* 2019 & 2020 (Saravati). Seasonally, the Performer Services Manager for the Winnipeg Fringe Theatre Festival.

TRAINING U of W Bachelor of Arts Honours - Stage Management, Production and Design. Creative Manitoba Mentorship in Stage Management 2020/21. Mentorship funded by Associated Designers of Canada in Lighting Design 2022/23.

ET CETERA As always, couldn't do it without my partner, Matt, and cat, Zella.



Tori Popp
Assistant Stage Manager

ROYAL MTC Assistant Stage Manager: *Waitress*, *Beautiful: The Carole King Musical*, *The Sound of Music*; *Urinetown*, *9 to 5 The Musical* (Royal MTC/MBA Lawyers Play). Apprentice Stage Manager: *New, Morning After Grace*.

OTHER THEATRE Festival Manager of the Winnipeg Fringe Theatre Festival. Assistant Stage Manager: *Afterlight* (The Keep Theatre/Rainbow); *Charlie Brown Double Bill* (MTYP).

TRAINING Bachelor of Arts Hons., with a specialization in Theatre Production and Stage Management (University of Winnipeg). Stage Management and Production Assistant Practicum (Banff Centre for Arts & Creativity).

ET CETERA It's such an immense pleasure to make art with my friends, congratulations to the whole team! Love always to FIC and M&D!

ELF - THE MUSICAL



Carolin Schroeder
*Apprentice Stage
Manager*

ROYAL MTC Apprentice Stage Manager:
Little Women.

OTHER THEATRE Stage Management:
Daredevils, Bloodsuckers! The Musical
(Winnipeg Fringe); Kiyanaan Indigenous
Theatre Festival (Echo Theatre); *Oh, the
Humanity and Other Good Intentions*
(U of W); *On the Edge, Concert Hour*
Ballet, Dance Spectrum (RWB School).
Apprentice Stage Management: *Merrily
We Roll Along* (Dry Cold); *Romeo & Juliet*
(RWB); *The Little Mermaid* (Rainbow).

TRAINING University of Winnipeg Theatre
& Film Department.

ET CETERA Recipient of the Jean Murray
– Moray Sinclair Scholarship. A huge thank
you to everyone at Royal MTC. Thank you
to my family, friends and mentors for your
love, support and guidance.

Music Theatre International *Licensing Agency*

Music Theatre International (MTI) is one
of the world's leading theatrical licensing
agencies, granting theatres from around
the world the rights to perform the great-
est selection of musicals from Broadway
and beyond. Founded in 1952 by compos-
er Frank Loesser and orchestrator Don
Walker, MTI is a driving force in advancing
musical theatre as a vibrant and engaging
art form.

MTI works directly with the composers,
lyricists and book writers of these musicals
to provide official scripts, musical materials
and dynamic theatrical resources to over
100,000 professional, community and
school theatres in the US and in over 150
countries worldwide.

MTI is particularly dedicated to educa-
tional theatre, and has created special
collections to meet the needs of various
types of performers and audiences. MTI's
Broadway Junior™ shows are 30- and
60-minute musicals for performance
by elementary and middle school-aged
performers, while MTI's School Editions
are musicals annotated for performance
by high school students. ●

ROYAL
MTC
MANITOBA THEATRE CENTRE

THEATRE FOR FANS UNDER 30

Looking for a great night out that's easy on your
wallet? Theatre Under 30 members, aged 18 - 29,
have exclusive access to world-class theatre for
just \$25 a seat! Members can purchase up to two
tickets and bring a guest of any age!

SIGN UP TODAY AT ROYALMTC.CA/UNDER30

DAVIDER MALHI IN *LIFE OF PI*. PHOTO BY NANC PRICE.



BELIEVE IN JOY

Believe in Theatre



These days, the world can feel a little heavy. But you can help lift it with a gift that inspires connection through the magic of live theatre.

This holiday season, Royal MTC is igniting connections with *Elf - The Musical* on the John Hirsch Mainstage. It's a hilarious, heartwarming story that reminds us what truly matters: kindness, joy and believing in others. Buddy the Elf isn't interested in status or cynicism. He cares about people. He sings loudly. He gives freely.

We also know you care, just like Buddy. And this holiday season, we hope you'll give generously, too.

When you make a gift to Royal MTC, you help create theatre that brings joy to thousands across Manitoba. You connect local artists with meaningful work, from performers and designers to the artisans who craft every prop, set and costume in our shops. You help build experiences filled with empathy, laughter and hope.

And this year, your donation will stretch even further. Thanks to a generous \$25,000 matching gift from Linda McGarva-Cohen and James Cohen, **the first \$25,000 donated will double** to create twice the joy and twice the magic.

Your gift, of any amount, helps ensure the lights stay on, the stories get told, and the magic lives on. Your support will fill the theatre season with laughter, connection and community spirit.

Because the world doesn't need more cynics. It needs more believers. More Buddys. More people like you.

We hope you will join Linda and James (and Buddy too!) in spreading joy this season.

ROYAL
MTC
MANITOBA THEATRE CENTRE

You can make your donation by contacting Heidi Struck at **204 954 6410** or **hstruck@royalmtc.ca**. If you'd prefer to give online you can scan this QR code.



EXPLORE MORE Elf – The Musical

EXPLORE MORE CHRISTMAS SEASON

***Virtually Christmas* by David Baddiel.**

Discover the spirit of Christmas in this charming story where all the things that make Christmastime special have been replaced by decidedly un-magical robots. Friends Etta and Monty race against time to find the real Santa and restore the true meaning of the festive season. J FICTION BADDIEL

***The Boy Who Slept Through Christmas: A Musical Novel* by Matt Lucas.**

Sing-along to this musical book and meet Leo, who, after his perfect Christmas goes all wrong, wishes it all away. But when Leo wakes up on Christmas day to find his wish came true and every trace of Christmas has been wished away, he and his friends set out to undo his wish and bring back Christmas. Includes QR codes and lyrics for 20 original songs. J FICTION LUCAS

***Max Fernsby and the Infinite Toys* by Gerry Swallow.**

Go on an adventure with Max, who has Santa's magic red bag fall into his lap, dropped by two joy-riding elves shortly before Christmas. Now Max and the elves need to get the bag back to Santa before Christmas, and before a greedy businessman steals the magical bag for himself! J FICTION SWALLOW

EXPLORE MORE CHRISTMAS CHEER, FOR GROWN-UPS

***The Christmas Countdown* by Holly Cassidy.**

Warm up with this novel where a recently heartbroken woman is tasked by her meddling sister to complete an Advent calendar of challenges to get her into the Christmas spirit, and perhaps strike up an unlikely romance along the way. FICTION ROM CASSIDY

***Bright Lights, Big Christmas* by Mary Kay Andrews.**

Meet Kerry, who descends from the family Christmas tree farm to help her older brother sell Christmas trees on a street corner in Greenwich Village. Looking for a second chance, Kerry might just find it among the magic of Christmas in the big city, her charming new neighbours, and one handsome recently divorced single dad in particular. FICTION ANDREWS

***The Christmas Wish* by Lindsey Kelk.**

Hunker down with this take a Groundhog Day-like time loop where newly single lawyer Gwen keeps repeating her family Christmas day in the countryside. Trying to figure out how to escape this situation, the one bright spot, and potential romance, is her childhood boy-next-door crush, Dev. FICTION ROM KELK ●



There are 1.4 million books, movies, audiobooks, eBooks, and more at the Winnipeg Public Library, and all you need to borrow them is your library card. There are 20 locations throughout the city, and there's an online catalogue for requesting items for pick-up at your library of convenience. An online e-Library has thousands of eBooks, eAudiobooks and more! All free to use with your library card. Visit us online at winnipeg.ca/library.

Embracing the
magic of live theatre,
and applauding the
joy it brings to our
community.

THE
Free Press

PROUD PARTNER OF ROYAL
MTC
MANITOBA THEATRE CENTRE



To subscribe call 204-697-7001
or visit winnipegfreepress.com/subscribe

Director's Notes

BY ALEX POCH GOLDIN

Dolly the sheep would have been 30 years old this year – the first cloned mammal died in 2003, but her spirit lives on. I don't mean that she may be cloned again, but the spirit of progress, technology, ethical compromise and financial greed that shaped her continues to thrive. In many ways, Artificial Intelligence is the Dolly of today as we face the profound societal impacts of AI.

I read *A Number* over 20 years ago and was deeply affected by the play, the language, the ideas, the structure and dilemmas explored between a father and his son(s).

Reading the play again in 2024, I was still awe-struck but for different reasons. Now as a dad, I viewed the play from the father's perspective. E.g. If you were a lousy parent who damaged your kid, and you could start all over, would you do it? Try to get it right this time? Wash away the guilt, the disappointment and start again with a fresh human to imprint on? That is the question that Salter, the father in the play, contends with. But to remake the past is to live with the consequences.

Caryl Churchill is brilliant and continues to confront us. She manages to skewer society, family and free will all in the same instant. She pits father against son(s) and stretches the filial bonds to absurd degrees.

Salter seeks escape, or possibly redemption, for his life choices. For the son(s) – Bernard's questioning of identity, history, family allegiance and the unsettling implications of being one of a number of copies is chilling.

The father denies and dissembles while his son(s) must poke through a shield of subterfuge, probing the disturbing nature of their beginnings to discover who they are. In an age of rapid technological advances, what could be more human?

Thank you for being here. ●

SYNOPSIS – Having discovered that there are “a number” of him, Bernard comes to his father Salter, looking for answers. How and why would he ever agree to a child's replication, and what triggered his son's cloning in the first place? What evolves are conversations questioning originality, identity and the value of human life. As Salter faces the legacy he has created, and the ethical impacts of his decisions, he is forced to confront his sons and face the truth about the personal cost of scientific progress and the need for self-perpetuation. ●



A STAR ALLIANCE MEMBER
MEMBRE DU RÉSEAU STAR ALLIANCE



Elevating arts and culture

Air Canada is a proud airline partner of the Royal Manitoba Theatre Centre. We soar together when we support arts and cultural institutions in the communities we serve.

#FlyTheFlag @aircanada

Élevons les arts et la culture

À titre de transporteur aérien, Air Canada est fière partenaire du Royal Manitoba Theatre Centre. En soutenant les institutions culturelles et artistiques dans les collectivités que nous desservons, nous les aidons à aller toujours plus haut, avec nous.

#HautLeDrapeau @aircanada



AIR CANADA



Dolly the Sheep

A Number was written in the years following the first successful cloning of an adult mammal. Dolly the sheep, born July 5, 1996, was introduced to the world in early 1997, setting off a wave of speculation about the cloning of humans and its greater ramifications. While the method of cloning used to create Dolly was highly inefficient and technical, news reports suggested we were on the verge of developing human clones, and governments rushed to respond to the threat. The New York Times Retro Report titled, “The story of Dolly the Cloned Sheep” contains archived footage of many popular concerns, including the idea of a “future Hitler” producing an army of themselves, and the suggestion that humans were playing God.

The work and its public discussion also opened up debate about the ethics around stem cell research, pioneered by American scientists of the time. This related research used stem cells harvested from aborted embryos. While the Bush Administration did succeed in shutting down this research in America at the time, Professor Shinya Yamanaka was able to develop a method for

creating stem cells from adult cells, receiving a Nobel Prize in 2012 for his work. This has relieved some of the controversy surrounding stem cell research, and has allowed scientists to develop ways to grow healthy tissue for use in medical treatments.

When asked to consider human cloning, scientists will point to the high risk of unsuccessful tests, and the multiple ways the processes could go wrong both before and after birth. Dolly was one successful clone in hundreds of tests. Even if an exact clone of a human was desired, the clone’s experiences as they grew up would produce differences.

In reality, Dolly was a by-product of experiments meant to duplicate parts of cells to produce material for medical research. The unreliability of the method used for her cloning has meant it in itself has not stuck around, though methods inspired by her are used to clone pets and livestock who exhibit exceptional traits.

The legacy of Dolly’s experiment is one of great advancements in medical research and our understanding of genetics. Thanks, Dolly!

FUN FACTS

- Dolly lived for six and a half years.
- Dolly had six biological offspring, and was the source for nine more clones.
- Dolly was named after Dolly Parton, because her genetic material was taken from her genetic source’s breast tissue.
- You can still visit Dolly at the National Museum of Scotland, as her taxidermied body is on display, and is one of the most popular exhibits. ●

SOURCE: ROYAL MTC ENRICHMENT GUIDE BY TALA GAMMON



Proud supporter of the
Royal Manitoba Theatre Centre.

BellMTS

PRESENTS

A Number

By Caryl Churchill

November 13 – 29, 2025

PREVIEW November 12

DirectorAlex Poch Goldin
Set DesignerKara Pankiw**†
Costume DesignerDaina Leitold
Lighting DesignerKsenia Broda-Milian***
Composer & Sound DesignerAshley Au**
Assistant DirectorSarah Constible
Assistant Sound DesignerNatanielle Felicitas
Stage ManagerKatie Hoppa
Apprentice Stage ManagerLarissa Shabaga

THE CAST (IN ALPHABETICAL ORDER)

Bernard 1 / Bernard 2 / Michael BlackRodrigo Beilfuss†
SalterVictor Ertmanis

A Number is performed without an intermission.

A Number is presented by arrangement with Concord Theatricals on behalf of Samuel French, Inc.
www.concordtheatricals.com

A Number was first presented by the English Stage Company at the Royal Court Theatre, London, September 2002
U.S. Premiere by New York Theatre Workshop, December 2004.

THE VIDEOTAPING OR MAKING OF ELECTRONIC OR OTHER AUDIO AND/OR VISUAL RECORDINGS OF THIS PRODUCTION AND DISTRIBUTING RECORDINGS OR STREAMS IN ANY MEDIUM, INCLUDING THE INTERNET, IS STRICTLY PROHIBITED, A VIOLATION OF THE AUTHOR(S)'S RIGHTS AND ACTIONABLE UNDER UNITED STATES COPYRIGHT LAW. FOR MORE INFORMATION, PLEASE VISIT:

www.concordtheatricals.com/resources/protecting-artists

Production photography by Dylan Hewlett.

**Indicated designers on this production are represented by the Associated Designers of Canada, IATSE Local ADC659.

*Position funded through the Jean Murray - Moray Sinclair Theatre Apprenticeship Program

†Past Jean Murray - Moray Sinclair apprenticeship or scholarship recipient

*Past Naomi Levin Theatre Scholarship award winner



Rodrigo Beilfuss

*Bernard 1 / Bernard 2
/ Michael Black*

ROYAL MTC Actor: *Little Women, The Three Musketeers*. Assistant Director: *Private Lives*. Upcoming: *Murder on the Orient Express* (with Citadel).

OTHER THEATRE (selected) Actor: Four seasons at Stratford Festival (2016–2019); *The Player King* (SIR); *A Dance to the End of the World* (PTE). Director: *The Year of Magical Thinking, Pandora* (PTE); *Waiting for Godot, A Midsummer Night's Dream, Iago Speaks, The Dark Lady, Hamlet* (SIR).

FILM/TV *Nobody 2; Intersection; The Snow Must Go On, The Santa Summit, Snowkissed* (Hallmark).

TRAINING Birmingham Conservatory (Stratford); MA in Classical Acting from LAMDA (UK); BA (Honours) from the University of Winnipeg; Michael Langham Workshop (Stratford).

ET CETERA Rodrigo is the Artistic Director of Shakespeare in the Ruins (SIR).



Victor Ertmanis Salter

ROYAL MTC Warehouse: *Automatic Pilot* 1985. Mainstage: *Marco in A View from the Bridge* 1989.

OTHER THEATRE Five seasons at the NAC English Company from 1978 to start my career; worked in every major and many minor theatre across Canada; nine seasons at Stratford; *Inexpressible Island* 2020; this is my second Caryl Churchill production – *Cloud 9* in the early '80s.

FILM/TV I keep telling people that if you don't look for me, I will show up in the oddest films or TV. Upcoming: appearing in Hallmark's *Holiday in Happy Hollow* movie this Christmas.

TRAINING I was trained on the job. Amateur work at 12 years old, semi-pro at age 17, pro at age 23. I'm now 73 years old and still learning.

ET CETERA I think this will be my theatrical swan song. My memory is still good, but the body is revolting. I'll stick to small film work from now on.



Caryl Churchill Playwright

Caryl Churchill was born on September 3, 1938 in London and grew up in the Lake District and in Montreal. She was educated at Lady Margaret Hall, Oxford. *Downstairs*, her first play written while she was still at university, was first staged in 1958 and won an award at the Sunday Times National Union of Students Drama Festival. Caryl Churchill's plays include: *Owners, Traps, Light Shining in Buckinghamshire, Cloud 9, Top Girls, Fen, Serious Money, Ice Cream, Mad Forest, The Skriker, Blue Heart, This is a Chair, Far Away, A Number, Drunk Enough To Say I Love You?, Seven Jewish Children, Love & Information, Here We Go and Escaped Alone*. Music theatre includes *Lives of the Great Poisoners* and *Hotel*, both with Orlando Gough. Caryl has also written for radio and television.



Alex Poch Goldin

Director

ROYAL MTC Directing debut. Acting: *Indecent*, *The Lehman Trilogy*, *Network*, *Trouble in Mind*, *Bang Bang* (Evie Award), *King Lear*, *Scorched*, *My Name is Asher Lev* (Meta Award). Upcoming: appearing in *Murder on the Orient Express* (with Citadel).

OTHER THEATRE Directing: *This Hotel* (TiFT); *Bully* (Artistic Fraud Newfoundland); *Jim and Shorty* (Factory); *Going* (Buddies); *The Dining Room*, *Love and Information* (Toronto Film School); *Anybody and Nobody* (Theatre Centre); *Bananafish: The Album* (SummerWorks). Alex has worked extensively in film and television and performed across Canada including Souleppper, Canadian Stage, Citadel, Theatre Calgary, Tarragon and Segal Centre. He has published/produced several plays and is completing a residency for WJT (*Edenbridge*) and a commission for Royal MTC (*Intrepid*). Upcoming: His play *The Right Road to Pontypool* will receive three staged readings at WJT in November.

ET CETERA alexpochgoldin.com



Kara Pankiw

Set Designer

ROYAL MTC *Sexual Misconduct of the Middle Classes*.

OTHER THEATRE *Pauline Boutal, entre les toiles et les planches* (TCM); *Hand to God*, *Smarty Pants* (Magnus); *Summer of Semitism*, *Bar Mitzvah Boy*, *After Jerusalem* (WJT); *Guys and Dolls* (Randolph College

for the Performing Arts); *The Cave* (Theatre Passe Muraille); *The Velveteen Rabbit* (Carousel Players); *This is How We Got Here* (Native Earth Performing Arts); Set and Costume Assistant (Shaw); *La Liste* (TCM); *Awaken* (Zone41/ SIR).

FILM/TV *The Great Salish Heist*, *Burden of Truth* Season 3.

TRAINING Graduate of the University of Winnipeg's Theatre and Film program, as well as the Environmental Design program at the University of Manitoba having studied Architecture. She is also a member of the Associated Designers of Canada.



Daina Leitold

Costume Designer

ROYAL MTC Costume Design: *Waitress*, *The Recipe* (with TPM), *among men* (with TPM). Set Design: *Mix Tapes From My Mom*. Upcoming: *Hockey Mom Hockey Dad* (Set and Costumes), *Holland* (Costumes - with TPM).

OTHER THEATRE (selected) Costume Design: *Rock of Ages*, *Rent* (Rainbow); *End of the Line* (TPM); *Twelfth Night* (SIR); *Narrow Bridge*, *Bar Mitzvah Boy* (WJT). Set Design: *Raised by Women*, *Year of Magical Thinking* (PTE); *The Dark Lady* (SIR); *PLÉ* (Plé Collective/MTYP). Set, Prop and Costume Design: *Glad to Be Here*, *Meet Me at Dawn*, *Edward II*, *Cock*, *Bull* (TBTR); *Hamlet*, *Timon of Athens* (SIR); *Red Earth* (One Trunk/TPM).

ET CETERA SATA Nomination for Production Excellence (*The Dark Lady*); Evie Award for Outstanding Design (*Red Earth*).

Great theatre lives here.



Photo by Jerry Grajewski

BMO



We are pleased to support the **Royal Manitoba Theatre Centre** and the artists who have been captivating audiences with exciting, innovative, and entertaining productions.

BMO is proud to be the **2025/26 Tom Hendry Warehouse Season Sponsor**.

A NUMBER



Ksenia Broda-Milian
Lighting Designer

ROYAL MTC Costume Designer: *King James, Yaga*. Assistant Designer: *As You Like It, Matilda the Musical*. Design Apprentice: *The Seagull, Cabaret, Sherlock Holmes*. 2020/21 National Mentorship Program. Design team for MTC/MBA Lawyers Plays: *Mamma Mia!, Urinetown*. Upcoming: *Holland* (with TPM).

OTHER THEATRE Selected recent set, costume and/or lighting designs: *Gather, The Velveteen Rabbit* (MTYP); *Rock of Ages, Breaking Up, Cash* (Rainbow); *The Band's Visit, Address Unknown* (WJT); *Yaga* (Belfry); *None of this is Happening* (TPM); *Much Ado* (SIR); *Katharsis* (PTE); *It's a Wonderful Life* (Magnus).

TRAINING/TEACHING Training: U of W (BAH), U of Alberta (MFA), Pratt Institute, Banff Centre. Teaching: Creative Manitoba, U of W, Musical Stage, MTYP, Theatre Alberta.

ET CETERA Ksenia is Royal MTC's Education and Enrichment Manager, a Rick Hansen Foundation Accessibility Certification Professional, and ADC659 member. Grateful for support of my family, this production team and mentors, including Per Brask in whose class I first read *A Number*, and who once remarked "sh*t happens - and it's a good thing too, otherwise we wouldn't have plays."



Ashley Au
*Composer &
Sound Designer*

ROYAL MTC *Casey and Diana* (with TA), *Little Women, The Recipe* (with TPM), *The Lehman Trilogy, among men* (with TPM), *Burning Mom, Sexual Misconduct of the Middle Classes, Trouble in Mind, Orlando*. 2022/23 National Mentorship Program.

OTHER THEATRE *Burning Mom* (Arts Club); *The Year of Magical Thinking* (PTE); 2024 ThisGen Fellow (Why Not Theatre).

TRAINING B.Mus (Jazz Performance) Brandon University, School of Music.

ET CETERA Ashley Au (she/they) is a Winnipeg-based bassist, composer, sound designer, arranger and queer creative. A multifaceted musician, Ashley specializes in the upright and electric basses - performing, touring and recording extensively for the last 15 years. As a composer and sound artist, Ashley's work can be found behind various theatre and dance productions as well as galleries and stages internationally. Ashley is the artistic director of Cluster New Music + Integrated Arts Festival.

THE WINNIPEG FRINGE THEATRE FESTIVAL AND DUANE FORREST PRESENT

BOB MARLEY

how reggae changed the world

★★★★★ - FREE PRESS

DEC 11-13

TOM HENDRY WAREHOUSE

TICKETS: \$28

INFO & TICKETS AT WINNIPEGFRINGE.COM



Sarah Constible
Assistant Director

ROYAL MTC (selected) Actor: *As You Like It*, *Di and Viv and Rose*, *Shakespeare in Love* (with Citadel), *Sarah Ballenden*, *The Fighting Days*, *The Penelopiad*, *The 39 Steps*, *Bleeding Hearts*, *After Miss Julie*.

OTHER THEATRE (selected) Actor: *Much Ado About Nothing*, *Timon of Athens*, *Richard III*, *Henry V* (SIR); *Dragonfly*, *Reservations*, *Beautiful Man* (TPM); *A Doll's House, Part 2* (Segal); *Strawberries in January*, *The Swearing Jar*, *Godspell* (PTE); *Am I Not King?* (zone41). Director: *The Winter's Tale*, *Julius Caesar*, *Stripped Down Hamlet* (SIR); *Mary's Wedding* (TPM); *Hamlet* (Snakeskin Jacket); *Edward II* (TBTR).

FILM/TV Actor: *The Best Christmas Pageant Ever!*, *The Zealot*, *The Stone Angel*, *High Life*, *Todd and the Book of Pure Evil*, *Less Than Kind*, *Flag Day*.

ET CETERA Sarah is in two bands, both of which have albums coming out soon: *Claire Thérèse* and *The Lockdown* this fall, and *The Fu Fu Chi Chi Choir* in the spring.



Enrich Your Experience!

Do you want to delve deeper into the themes of the play? For every show we release an enrichment guide with help from experts and educators. This guide offers background context, resources to explore and discussion questions to keep the conversation going. Read them at royalmtc.ca/enrichmentguides.



Katie Hoppa
Stage Manager

ROYAL MTC Assistant Stage Manager: *Waitress*, *The Mountaintop*.

OTHER THEATRE Select recent credits: *Liars at a Funeral*, *Raised by Women*, *Year of Magical Thinking* (PTE); *Bad Parent* (PTE/vAct); *Frozen*, *Mary Poppins*, *The Little Mermaid*, *The Wizard of Oz*, *Cinderella* (Rainbow); *A Charlie Brown Double Bill* (MTYP); seven seasons of rain and sunshine with SIR.

ET CETERA Thanks to Kristjan, Rupert and Juniper for all their support this season and to Mike, Ali, Zahra and Dustyn, who I wouldn't have gotten here without.



Larissa Shabaga
Apprentice Stage Manager

ROYAL MTC *Murder for Two*, *Mix Tapes From My Mom* (tour).

OTHER THEATRE Assistant SM: *Macbeth*, *Waiting for Godot* (SIR). Apprentice SM: *Mary Poppins* (Rainbow). Production Assistant: *The Little Mermaid*, *RENT*, *The Wizard of Oz*, *The Hockey Sweater: A Musical* (Rainbow).

TRAINING Graduate of the University of Winnipeg with a Bachelor of Arts in Theatre and Film.

ET CETERA Thank you to my family, friends and colleagues for their never-ending support and guidance. ●

EXPLORE MORE A Number

EXPLORE MORE FRACTURED IDENTITIES AND DOPPELGÄNGERS

***Never Let Me Go* by Kazuo Ishiguro.**

In this dystopian novel, Kazuo Ishiguro explores the lives of clones who are created for organ harvesting. This book dives into the moral implications of cloning, as well as the emotional and philosophical questions about identity, autonomy and what it means to be human. FICTION ISHIGURO

***Brave New World* by Aldous Huxley.**

Cloned citizens, engineered caste systems and programmed happiness – Huxley's dystopia presents a world where identity and individuality are sacrificed for social stability. FICTION HUXLEY

***The Double* by José Saramago.** This novel delves into the unsettling notion of encountering someone who looks exactly like you. The protagonist's doppelgänger enters his life, throwing his sense of self into chaos. Themes of identity, reality, and the psychological effects of meeting your twin are explored in this surreal, thought-provoking work. FICTION SARAMAGO

EXPLORE MORE BIOETHICS AND THE SCIENCE OF CLONING

***The immortal life of Henrietta Lacks* by Rebecca Skloot.** Rebecca Skloot's biography of Henrietta Lacks explores the ethics of using someone's biological material without consent. Henrietta's cells were harvested without her knowledge and contributed to groundbreaking scientific research. Her story is a powerful reflection of how science intersects with ethics and identity. 616.027709 LACKS 2010

***The Ethics of Human Cloning* by William Dudley.** Explore the moral complexities of human cloning in this in-depth philosophical work. Dudley tackles the ethical questions raised by cloning technology – identity, autonomy, and the social implications of creating life for specific purposes. 174.25 ETH

EXPLORE MORE PERFORMANCE AND PSYCHOLOGICAL THRILLERS

***Orphan Black* [DVD videorecording].**

This series focuses on the experiences of a woman who discovers she has multiple clones, delving into themes of identity, ethics, and the emotional consequences of being a genetic copy of another person. DVD FILM/TV ORP

***Ex Machina* [DVD videorecording].**

This film explores the boundaries between humanity and artificial intelligence, and it touches on the ethical implications of creating life for specific purposes. DVD FILM/TV EXM ●



There are 1.4 million books, movies, audiobooks, eBooks, and more at the Winnipeg Public Library, and all you need to borrow them is your library card. There are 20 locations throughout the city, and there's an online catalogue for requesting items for pick-up at your library of convenience. An online e-Library has thousands of eBooks, eAudiobooks and more! All free to use with your library card. Visit us online at winnipeg.ca/library.

The background is a solid black field. It is decorated with several thin, gold-colored lines that intersect to form a complex geometric pattern of triangles and polygons. In the upper left and upper right corners, there are two gold-colored cylinders, each oriented diagonally. Lines extend from the top of these cylinders across the upper portion of the image.

**We're proud to
support Royal MTC's
deep commitment to
bringing Manitobans
exhilarating theatre.**

FillmoreRiley

FillmoreRiley.com

Fillmore Riley LLP

Lawyers and Trademark Agents

SUPPORTERS

Many thanks to our donors
who made a gift between
Sep 1, 2024 and Oct 17, 2025

DIRECTOR'S CIRCLE

\$10,000+

Gail Asper, OC, OM, LLD* &
Michael Paterson
Zita & Mark Bernstein Family
Foundation
Linda McGarva-Cohen & James
Cohen, OM
The Mayor's Gala - Support for the
Arts - The Winnipeg Foundation
Shirley Anne Richardson Annual
Giving Trust Fund - The Winnipeg
Foundation
Todd & Kellie Tanchak
Dr. Marcel Van Woensel

\$6,500-9,999

Houston Family of Bradwardine
Fund - The Winnipeg Foundation
June & Bob Jackson Memorial Fund
for the Performing Arts - The
Winnipeg Foundation
Diane & Dave Johnston
Ted & Ruth Northam
Dr. H. Nyhof & Ms. Jo-Anne Lutz
Polar Foundation
Mr. Leslie Taylor

\$4,000-6,499

Pauline Braun
David Christianson & Vera
Steinberger
Gail Corne
Karen & Alan Dalkie
Neil & Carol Duboff
Susan Glass & Arni Thorsteinson
Evan Klassen* & Bert Keeper*
Elizabeth Marr & Nick, David &
Allison Slonosky
Leigh Murphy - in memory of Liam
Murphy*
Gerry & Barb Price
Hartley & Heather Richardson

\$2,000-3,999

Dr. J Baluta & Ms. O. Kandia
Lorraine Beck Craig McIntosh
Todd Bourcier
H. F. Bowen
Emily Burt*
David & Lianne Carefoot
David* & Barb Christie
Heather Clarke

Gerry* & Chris Couture
D. J. Cowan
Kerry Dangerfield**
Ben & Shari Diamond
Dr. Lawrence & Ms. Brenda Ellerby
Tony* & Jennifer Fletcher*
Margaret Groome
Linda Hamilton & Grange Morrow*
Sharon Hamilton*
Dr. P. Kmet & Mr. B. Roslycky
Donna & Dave* Lalama
Katrina Lee-Kwen & Jeff Neufeld
Drs. Bill Pope & Elizabeth Tippet
Pope Fund - The Winnipeg
Foundation
Sanford & Deborah Riley
Bill & Laurie* Speers
Mait & Pat Sundmark
Kelly Thornton* & Josep
Seras-Gubert*
Helga Van Iderstine
Dr. & Mrs. James & Kim Zacharias
2 Anonymous

\$1,200-1,999

Doneta Brothchie, CM* & Harry
Brothchie*
Hadera & Mark Chisick
The Circle Foundation
Hugh Conacher*
Pam & Andrew Cooke
Philip Corrin
Corinne Ratuski & Brad Favel*
Sylvia Flam*
Katherine Fox**
Susan* & Ab Freig*
John* & Nicola Guttormson*
Ahava Halpern & Frank Lavitt*
Barbara Hamilton
Gregg & Mary Hanson
Vivian Hilder-Skward & David Skward
- in memory of Mike Skward*
Colleen Hrabit* & Curtis Brown
Shawn Hughes & Bruno Koehn*
Katie Inverarity
Lisa Johnston
Hon. William Johnston
Michelle Kaschl
Serena Helen Kraayeveld
David* & Ellen Kroft*
J. Lamothe*
Rick Lee & Laurie Shapiro
Peter & Karen Leipsic
Logan Family Fund - Nick Logan
& Christine Skene
Reginald & Judy Low
Mark & Gloria Mancini*
Gerard Matte & Lydia Surasky-Matte
Jim* & Penny McLandress*
Melissa Novecosky
Wayne & Linda Paquin

Jean-Pierre Parenty & Michelle Smith
Donna Plant
Frances Pollard
K. Heather Power & Harold Klause*
Jocelyne Prefontaine**
Priority Restoration
Lawrence Prout* & Lisa Gardewine*
Margaret Redmond* & Greg Gillis*
Margaret & Loren* Remillard
R. S. Cunha Dental Corp*
Sudhir Sandhu**
Ken & Susan* Skinner*
Donald Smith*
Kevin Hines & Shelly Smith-Hines*
Joan Stephens - in memory of
Annice Stephens*
Sasha & Josh Thiem*
Geeta* & Michael Tucker*
Vicki Verville*
Murray & Nancy Wiegand
Rick & Claire* Workman
Nicole Zajac**
Anonymous

COMPANY CIRCLE

\$600-1,199

Robert & Ina Abra Family Fund -
The Winnipeg Foundation
Jennifer & Scott Ash
Dr. Corinne Barrett DeWiele &
Mr. V. Michael DeWiele
Ryan Bernier
Brenlee Carrington Trepel KC
& Brent Trepel
Gertie Chipka
Aynsley Cockshott
Jim & Gwen Court
J. Davidson*
H. Dyck
Neil & Sherry Fast
Pamela & Kevin Friesen
Felicia & Trevor Frost
Brad & Jenn Gesell
The Art Maister & Kayla Gordon
Foundation
Charles Henaire
Rodney Hick & Tracey Jackson
N & L Holliday
Sylvia Jansen
Katherine Clements & James Tam
Peter Kingsley, KC*
Donna Korban & Family
Hester Kroft
John & Heather Lea
Shirley Liba
Linda & Ray Loewen
Teresa Lopata & Bruce Wagg
Brian & Christie Lysack*

*Current Royal MTC Board of Trustees/Advisory Board members

*Current Royal MTC staff

*Monthly Donors/Drama Club

SUPPORTERS

Garry Markham
 Carol & Barry[§] McArton
 Terri & Jim McKerchar[†]
 Ron McKinnon[§] & Peggy Barker[†]
 Carolyn Garlich & Peter Miller Gift Fund
 Colleen Munro
 Marika Nerbas
 Tracey Novak
 Ivan & Cathy Oresnik^{*}
 Cam & Carole Osler
 Pierre Ouellet
 Judith Parker[†]
 Helene Poirier & Ian Gillies
 Iris Reimer
 David & Joan Rew
 Henriette Ricou & Jure Manfreda
 Jean Riggall[†]
 Barbara Scheuneman
 Tyler Shingoose
 Shayna & Merrill Shulman
 Marc Simard
 Carol & Ron Slater Fund - Jewish Foundation of Manitoba
 Deborah Spracklin
 Doug Stephen
 Sandra Tankard[†]
 Leah R. Janzen & Ian R. Thomson
 Dr. Peter Triggs[†]
 Grant & Trish Wainikka
 Jerry & Karen Wake
 Faye Warren
 Kathleen Gough & Tim Wildman
 Dr. Dorothy Y. Young
 4 Anonymous

\$250-599

Pat & Darrell Adams[†]
 Bob Adkins in memory of Nancy
 Glen Agar & Pam Reimer
 Dawn Andersen
 Jay & Judy Anderson
 Abe Anhang
 Elizabeth B. Armytage Fund
 - The Winnipeg Foundation
 Lynne M Arnason
 Dennis & Elaine Schultz
 Peter Attwood
 Brenna Bacchus[†]
 Peter Bagot
 Zaz Bajon & Patricia Hunter
 Olga & Ivan Banias
 Dianne J. Beaven
 Larry Beeston & Anna Sikora
 Holly Beirnes-Burt
 Susan & George Benias
 Terri & Morley Bernstein
 Bruce & Joyce Berry
 Chris Bishop
 Helga & Gerhard Bock
 Lilian Bonin & Daniel P Levin

John & Marilyn Bourbonnais
 Ron & Joan Boyd[†]
 M. Braid
 Kris & Ruth Breckman
 Billy Brodovsky & Libby Yager[†]
 Brian Brown
 Ellen & George Bruce
 Donna Byrne
 Colleen Cariou & Ron Maier
 Arlene Carr
 Cheryl Chaban
 Rosemary Chapman
 Roberta Christianson
 Nancy Chuback
 Ken Clark & Pamela Lockman
 Agnes Collins
 Joy Cooper & Martin Reed
 Connor Coughlin
 Robert Coutts[†]
 Drs. Kristen Creek & Josh Manusov
 Margaret Cuddy
 Matthew Cutler & Dr. Avery Miller
 J. Dale
 Verna Danylchuk
 Ms. D. Davidson
 Doug De Graff
 Andre & Diane de Rocquigny
 Patrick Dewarle
 Rita Dornn
 Craig & Claudette Dunn
 Helene Dyck
 Roberta Dyck
 Glen^{*} & Joan Dyrdra
 Michael Easton
 Gail Eckert
 Greg Edmond & Irene
 Groot-Koerkamp
 Ken & Lesley Enns
 Fran Falzarano
 Kate Hodgert-Fennell[†]
 Pat & Doug Finkbeiner
 Gayle Fischer
 Maureen Flaherty & Fred Beckwith
 Andrea Forbes-Avila[†]
 Adrian Frost & Kerra Mruss
 Paul Daeninck & Monica Furer
 Colleen & Dan Furlan[†]
 Daniel Gagnon
 Helen Garrod
 Lynne & Lindsay Gauld[†]
 Heather Gillander
 Jan Gordon[†]
 Sharon Goszer
 L. Graham
 M. Gray
 Noella & Patrick[†] Hanan[†]
 Doug & Sylvia Hannah
 Brian & Dawn Hanson - in memory of
 our Daughter, Kristin Dawn Hanson
 Barbara Harrison
 Kathryn & Wayne Harrison

Chris Hayduk
 Frank & Sue Hechter[†]
 Kyle Hendin & Breanne Korban
 Marilyn Hendzel[†]
 Judith & Eric Hinton
 Ted & Cathy Hlynsky
 Rob & Jen Hochkiewicz[†]
 Kate Holden
 Ken Houssin^{*}, FCA
 Duraid Ibrahim
 Dan & Karen Ilchyna
 G. C. Irwin-Kilfoyle
 Tom & Laura Jelic
 Lynne Jentsch
 Gerald Jewers
 Dave & Lesia Johns
 Tiffany Johnson-Sheldon
 Joanne & Rod Kamins
 L. Kampeas
 Sherry Kaniuga[†]
 Sheryl Kapitz & Aaron London[†]
 Joel & Danna Kaplan
 Sandy & Joan Kellett
 Edward & Stella Kennedy
 Joan Kennedy
 Kesslering Forsythe Family Fund
 Betty Klassen
 Richard & Karin Klassen
 Julie Ann Kniskern
 Denise & David Koss
 Janice & Richard Kostelnyk
 Carol Campbell & Andy Krentz
 Randie & Jan Kushnier
 Laurie Lam & Larry Desrochers
 Desiree Lavallee^{††}
 Bob Leggett
 Richard Leipsic & Kerrie Halprin
 Curt Letkeman
 Tim Preston - in memory of Dave Ling
 Charles & Diane Littman
 Diana & Laurie Logan
 Laura Lomow
 Pat & Jim Ludwig
 Carole Lupkowski
 Tom Lussier
 Nancy & David MacAngus
 MacDonald/Cageorge Fund
 - The Winnipeg Foundation
 Jim MacGregor & Christine Halma
 Roger Maguet
 Judith Manning
 Cheryl & Eric Matheson
 Jim & Lynne McClelland
 Campbell & Lorraine McIntyre
 Dr. Marlene & Ian McKay
 Colleen McKenty
 Greg & Gloria McLaren
 John & Carolynne McLure Fund
 - The Winnipeg Foundation
 Donald G. McNabb
 Barb Melnychuk

^{*}Current Royal MTC Board of Trustees/Advisory Board members [†]Current Royal MTC staff [‡]Monthly Donors/Drama Club [§]Fondly Remembered

SUPPORTERS

Loretta Merriam
 Albert & Judith Metcalfe*
 Susie Miclash
 Catherine Lambeth & Grant Mitchell
 Marc Monnin & Donna Miller
 Tom & Susan Mooney
 Rodney Moorhead
 Katherine Morgan
 Sagan Morrow*
 Cathy Moser & Jeff Itzkow
 Brad Nance*
 Vanessa Dowostawski
 D. & G. Nytepchuk
 Sunny Oh
 Joanne Olchoweki
 John Osler
 Paulette Pappel
 Dr. Philip Pass
 William & Helen Patterson
 Peter & Anita Pelech
 Jo-Ann & Harvey Peltz*
 Bonnie Penno*
 Linda Pettit
 Arthur Pfeffer
 Rick Pinchin
 Beth & John Pollard
 Nancy & Brett Porth
 Maureen Prendiville & Paul Jensen
 Nalini Reddy*
 Cheryl Reid
 Lorraine & Ernest Reinfort
 Joan Richardson
 Marilyn Robbins
 Cindy Rodych
 Tamara Rossie
 Deborah & Neil Rostkowski
 Debbie Roy
 Michael T. Ruta
 Paul & Cathy Samyn
 Onnolee Scharf*
 Roland Schneider
 Harald & Vicki Schulz
 Faye Scott
 Gail Screation
 Claire Semchuk
 In memory of Sybil Shack for the
 benefit of MTC
 Sharon Shaydak
 Blake Shiario
 Dr. Elinor Simons
 Mark C., Sabrina & Siena Smith
 Al* & Virginia Snyder
 Peter & Geri Spencer
 Maria Steeds
 Heather Stefanson
 Anthony Steffes & David Viggars
 Heidi Struck**
 Eleanor Suderman
 Mary Ann Supleve
 Ray & Fenella Temmerman
 Malcolm & Shirley Tinsley

Jen & Kevin Tomanek
 Gord & Lorena Trann
 Brad Baydock & Wendy Tretiak
 Dr. Stephen Tritt & Dr. Sharon
 Goszer Tritt
 Grant Tweed
 Dr. Kristel van Ineveld
 Stirling Walkes
 Deanna Waters
 Leslie* & Sean Watson*
 Alys-Lynne & Steve West*
 Lionel & Lorraine Wiens
 Catherine Wilkie
 Anita & Kevin Wolfe
 Richard L. Yaffe & John A. Statham*
 Ryan Zajac
 Olia & Roman Zubach
 2 Anonymous*
 19 Anonymous

\$150-249

Sharon Allentuck
 Bonnie & Joel Antel
 Craig & Sue Mackenzie
 Nadine Audet*
 Richard & Nancy Ball
 Josie & Richard Bartlinski
 Karen & John Bate
 Brenda Batzel
 Sandra Bazin
 Kevin Becker
 Jim & Doreen Beckstead
 Byrnes Benoit
 Trish Bergal
 Bruce & Shelley Bertrand-Meadows
 Kristine Betker & Eric Kananoja
 Barbara Bielak
 Val & Blair Bingeman
 Michael Blais
 Joan Blight
 Marnie Bolland
 Mavis Bollman & Ray Hesslein
 Bruce & Karen Boyd
 Patricia Bozyk
 Don & Cheryl Breakey
 Janine Brémault Bamford
 Mrs. Donna J. Brown
 Sean & Melanie Bueckert
 John Burrows
 Cheryl Butler
 Corinne Campbell*
 Debbie Campbell
 Lawrie & Bea Cherniack
 Shelley Chochinov
 Dr. T. I. Choptiany
 Katherine Cobor
 Diane Connelly
 Joan E. Coombe
 Sarah Corley
 Laurel Cumming
 Ashleigh Czyrnyj

Werner & Judy Danchura
 Linda Daniels
 Chris Darazsi*
 Alison Darling
 Tessa Denton
 Lorraine & Alan Dewar
 Julie Diakiw
 Vance & Sallee Dick
 Bev & Allan Doern*
 Heather Domke
 Sheila Domke & Stephen Ross
 Thomas P Dooley
 Rob Dryden
 John & Ada Ducas
 Harry & Mary Lynn Duckworth
 Marilyn Dudek
 Barbara & David Ediger*
 John Edwards & Wendy Stelko
 Ruth & Ernest Epp
 Jemara Fay*
 Marion Fellingner
 Patricia Fitzpatrick
 Nancy Flintoft & John McWilliams
 Lawrence Foster*
 Jeff Fowler
 Donna Frame*
 Linda Freed
 Christine M Freeman
 Anne Friesen
 Gloria & Rick Gallant
 Juanita Giesbrecht
 Patti & Rick Gilhuly
 Ian & Lorraine Glassford
 Benjamin Goldenberg
 John & Marcia Gordon
 Russ Greene & Sandra
 Paterson-Greene
 Robert Gregoire*
 Abigail Grieder
 Sig & Leona Hackbart
 Janet Hall
 Paul & Val Harack
 Shellie & Grant Hatch*
 Ingrid Hayes
 Joe Healey
 Mary & David Hickling
 Lenore & John Hodge
 Mary Hodge
 Jennie Hogan
 Lisa Hunt & Hugh Wichenko*
 Jean Hyrich
 Stu & Alice Iverson
 Wendy & Jim Jackson
 Elizabeth Janzen
 Verna Johnson
 Robert & Karen Johnston
 Brian & Renee Kaplan
 Ursula & John Kelemen
 Shan Dickson & Andrea Kneale
 Ms. Julie Koehn
 Donna & Jim Komishon

*Current Royal MTC Board of Trustees/Advisory Board members *Current Royal MTC staff *Monthly Donors/Drama Club *Fondly Remembered

SUPPORTERS

Jacki & Sheldon Koven
Lorraine Kraichy*
Terri Krasnowski*
Paula Kristjanson Hasiuk
Howard & Jane Kroeger
Colin Kyle
Robert Lafond
Teena Laird
Bryen Lebar & Patricia Sauder*
Saul & Kathy Leibl
Susanne Leslie*
Tim & Kate Letkemant*
Becky Lett*
Judy & Eric Lister
John & Joy Loewen*
Sarah, Chris & Lori Luby
Carol Ann Lussier
Dr. Shelley Mahoney
Lyndsay Managire
Dr. Neil & Elaine Margolis
Lynne Martin* - in memory of
Omar Martin
Linda Matheson
Barbara McCandless
Linda A McMillan
Barry McNabb
Catarina Mello Schultz*
Gail Mildren - in memory of Gladys
& Walter Mildren
Celoris Miller
Cressida Mills
Marlene Mortimer
Suzanne & Kenneth Munroe
Harold & Nancy Nagy
Leslie Nichol
Robert Nickel
Helen Norrie
Tom Nowicki
Irene Onuch
Cynthia Orris
Theresa Oye
Kristen Pachet
Sonjia Pasiechnik
Craig Patterson*
Myron Pawlowsky & Susan Boulter
Brian Perchaluk
Ingrid Peters Fransen
Donald & Elaine Peters
Kristin Peterson
Funseekers Travel
Cynthia Plett
Denise Plett
Carla Plummer
M. Lois Powne
Doug & Eunice Pratt
Vivian E. Rachlis
Roberta & Rick Rackal
Dr. R. & Audrey Ramchandarr
Jim & Kathy Ranick*
Linda Ratynski
Candace & Adam Rea*

Lucas Redekop
Margaret Redekop
Gwen & Mark Relph
Shelley Rennie
The Robbins Family
Nicole Robidoux
Linda Robinson
Mary Anne Rosenbloom
Pat & Michelle Rowan
Cecile Roy
Maria & Kyle Sabourin
David & Tammie Sainsbury
Denyse & Ken Saloranta
Chris Salstrom*
Heather Sandilands*
Connie Sawatsky
Dan & Sandra Sawatzky
Trudy Schroeder
Carol Scurfield
Shimon Segal
Irka Semaniuk
Greg Sexsmith & Joni Lavender
Sexsmith*
Jo-Anne & Ian Seymour
Kumar Sharma & Angelina DiSanto
Debbie Shymko
Jim & Susan Shaw
Sydney Shore & Wayne Sharpe
Linda Simpson
Meera & Sach Sinha
Earl Slimmon
David Smith
Margo & Dennis Smith
Jon Sorokowski
Caterina & George Sotiriadis
Jacqueline St. Hill
Karen Stach
Sharon Stanley
Kim Stephens
Wally Stewart & Lori Tighe
Shirley & Tom Strutt
Alec Surasky
Anita Tait
Heather & Donald Talocka
Mala & Andrew Teeluck*
Jeff Thiessen
Linda Thomas
Lesley Thomson
Elaine Toms
Elaine Tresoor
Eric Turner*
Chris Turyk & Bryce Weedmark*
Robert Tyler
Teresa Visser
Gwen & Helmut Waedt
Jane & Don Walters*
Paul & Laura Walton*
Robert & Sherilyn Ward
John & Marjorie Warkentin
Peter & Joan Washchysyn
Hymie & Shaaron Weinstein

Mary Agnes Welch*
Lydia & Michael West
Al & Pat Wherrett*
Florence & Donald Whitmore
Terence Wiebe
Les & Terry Wiens
Theresa Wiktorski
Leslie Wilson
Gustine & Dennis Wilton
Reed & Arla Winstone
Deborah A. Wolfe
James Wood*
Margaret & Paul Wright
Gloria Zacharias
Kerry Zakowich
17 Anonymous

SPONSORS

Air Canada
The Asper Family Foundation
The Gail Asper Family Foundation
The Asper Foundation
Bell MTS
Birchwood Lexus
BMO Financial Group
Bonaventure Travel Inc.
Canada Life
CIBC Imperial Markets
Culligan Water
Dycom Direct Mail Services
Esdale Printing Co. Ltd.
Fillmore Riley LLP
Free Press
GFL Environmental
Global Drain Technologies
HUB International
IG Wealth Management
JEM Insurance
Jones & Co Wine Merchants
Lawton Partners
Liquor Mart
Manitoba Bar Association
Manitoba Public Insurance
McDiarmid Flowers
McNally Robinson Booksellers
POS Systems
Red River Co-operative Ltd.
Relish Ideas
Soirée Event Planning
Stantec Consulting Ltd.
Tanchak Wealth Management Group
Taylor McCaffrey LLP
TD Bank Group
Torque Brewing
University of Manitoba - Faculty
of Law
Westgate Enterprises
WOW! Catering

*Current Royal MTC Board of Trustees/Advisory Board members

*Current Royal MTC staff

*Monthly Donors/Drama Club

SUPPORTERS

CORPORATE DIRECTOR'S CIRCLE

\$25,000+

Johnston Group Inc.
Richardson Foundation

\$5,000-9,999

Cambrian Credit Union
Maxim Truck & Trailer - Doug
Harvey & Jan Shute

\$3,000-4,999

Gendis Inc.
Maple Leaf Construction Ltd., Blake
Fitzpatrick

\$1,200-2,999

Arthur J. Gallagher Insurance and
Risk Management
Domo Gasoline Corporation Ltd.
- Kate M. Everett, President
Manitoba's Credit Unions
Pollard Banknote Limited
Qualico

CORPORATE COMPANY CIRCLE

\$600-1,199

Mid West Packaging Limited
Premier Printing Ltd.

\$300-599

Border Brokers Inc.

\$150-299

Patill/St. James Insurance

FOUNDERS' CIRCLE

Wayne & Lee Anderson
Gail Asper, OC, OM, LLD*
Zdzislaw (Zaz) Bajon & Patricia
Hunter
Peggy Barker & Ron McKinnon*
Mariam Bernstein
Marjorie & Morley* Blankstein
Duane* & Pauline Braun
Doneta Brothie, CM* &
Harry Brothie
Ken* & Denise Brown
David & Lianne Carefoot
Len & Heather Cariou
Terri Cherniack & Steven Schipper,
CM, OM
Jennifer Cheslock & George Buri
David Christianson & Vera
Steinberger
David* & Barbara Christie
Gerry* & Chris Couture
D. J. Cowan
Hugh B. Cowan
Kerry Dangerfield*
Laurie Lam & Larry Desrochers
Glen* & Joan Dyrda
Robert & Florence Eastwood
Don & Elsie Elias
Bill* & Gayle Fischer
Anthony* & Jennifer Fletcher
Jack Fraser
James Gibbs*
Sandy & Rheel Gousseau
Rita Gunn* & Gregory Mason
John* & Nicola Guttormson
Ahava Halpern & Frank Lavitt
Linda Hamilton & Grange Morrow
Sharon Hamilton
Gary Hannaford* & Cathy Rushton
Ted* & Gail Hechter
Elaine Heinicke*
Camilla Holland
Shawn Hughes & Bruno Koehn
June* & Bob Jackson Fund for the
Performing Arts
Maureen E. Jay
Andrew & Wendy Jensen
David & Diane Johnston
Dr. Leonard & Hope* Kahane
Janis Kaminsky
Jason Kasper
John Kearsey
Gordon & Anne Keatch*
Rob Kennedy & Claudette Leclerc
Serena Helen Kraayeveld
Leona J. MacDonald
Cheryl Johannson* & Michael
Mainman

Mark & Gloria Mancini
Virginia Martin*
Jim* & Penny McLandress
Barb Melnychuk
Bob & Pat Migliore
Jeffrey Morton*
Ken & Sharon Mould
Dr. Liam Murphy*
Robb & Heather Paterson
Chris Pearce
Scott Penner
Gina & John C. Petersmeyer
Drs. Bill Pope & Elizabeth
Tippett-Pope
K. Heather Power & Harold Klause
Margaret Redmond* & Greg Gillis
Marlene Reiss & Perry Rose
Edward Fisher & Lyse Rémillard
Joan D. Richardson
Jean Riggall
Michelle Rowan
Michael T. Ruta
Sharon Ryman
Susan Skinner*
Kevin Hines & Shelly Smith-Hines
Bill & Laurie* Speers
Deborah Spracklin
Joan Stephens
Joanne Tait
Suzanne Ulyot
Lionel & Lorraine Wiens
Margaret* & Alfred Wikjord
Richard L. Yaffe & John A. Statham*
Brenda Zaporzan*
3 Anonymous

*Current Royal MTC Board of Trustees/Advisory Board members *Current Royal MTC staff *Monthly Donors/Drama Club *Fondly Remembered
If you have remembered Royal MTC in your will, please let us know.

SUPPORTERS

ENDOWMENT - STEVEN SCHIPPER FUND

Many thanks to the generosity of our Endowment Fund donors who gave a gift or fulfilled a pledge payment between Sep 1, 2024 and Oct 17, 2025. Amounts listed are cumulative.

\$5,000,000+

Government of Canada/
Gouvernement du Canada
Canadian Heritage/Patrimoine
canadien

\$100,000-249,999

Manitoba Theatre Centre Volunteer
Corps of Ushers
The Leigh & Liam Murphy Family
Fund
Henriette Ricou & Jure Manfreda

\$50,000-99,999

Drs. Ken & Sharon Mould

\$25,000-49,999

Marilyn & Jim Burt
Susan Glass & Arni Thorsteinson
Terracon Development Ltd.

\$10,000-24,999

Peggy Barker & Ron McKinnon[§]
Don & Sheila Katz
Susan & Keith Knox
Garry Markham
Norma Anne Padilla
L. Blair Philpott & Tom Kynman

\$5,000-9,999

Margaret Caie
Pam & Andrew Cooke
Gina O'Connor & John C.
Petersmeyer*
Marlene Reiss & Perry Rose
Barbara Scheuneman
Elaine Toms
Dr. Dorothy Y. Young
2 Anonymous

\$2,500-4,999

Don & Cheryl Breakey
Carol Budnick
Rita & Don Campbell
Roberta Dyck
Michael & Lynn Evans
David & Ewhenia Gnutel
John & Margaret Graham
Jean & Lisa Neron

\$1,000-2,499

Miranda & Hannah Baran
Ron & Joan Boyd
Art & Donna Chow
Dorothy Davidson
Teresa A. Hay
Jordan Janisse & Teresa Cooper
Estelle Meyers
Paul & Elaine Neelon
Edna Poulter
W. & N. Rennie
Jim & Susan Shaw
Howie & Sue Simpson
Geri & Peter Spencer
Deborah Spracklin
Anonymous

\$500-999

Helene Dyck
Mr. & Mrs. Fred Kisil
Bob & Pat Migliore
Marlene Mortimer
Ivor & Lorna Schledewitz
Bryce & Jenna Simes
Gabor Vamos & Brenda Silver
Anonymous

UP TO \$499

Ingrid Bolbecher
Adam & Tara Klaponski
Elliot Leven
Mary-Anne Lovallo
Jacqueline L. Melnyk
Theresa Oye
Edward Fisher & Lyse Rémillard
Debbie Wilson
2 Anonymous

**MANY THANKS TO
OUR VOLUNTEERS!**

SAVE THE DATE

2026—27 Season Announcement

JANUARY 23, 2026

ROYAL
MTC
MANITOBA THEATRE CENTRE

SUPPORTING PARTNERS

CORE FUNDERS



Prairies Economic
Development Canada

Développement économique
Canada pour les Prairies

Canada

Manitoba



Canada Council
for the Arts

Conseil des arts
du Canada



CONSEIL DES
ARTS DU
MANITOBA
ARTS COUNCIL



WINNIPEG
ARTS COUNCIL

THE
WINNIPEG
FOUNDATION
For Good. Forever.

EXCLUSIVE PRODUCTION SUPPORTER



RICHARDSON
FOUNDATION

TOM HENDRY WAREHOUSE SEASON SPONSOR



JOHN HIRSCH MAINSTAGE PRODUCTION SPONSORS

THE
ASPER
FOUNDATION

GAIL ASPER
FAMILY FOUNDATION

TOM HENDRY WAREHOUSE PRODUCTION SPONSOR

THE
ASPER
FOUNDATION

SUPPORTING PARTNERS

LOYAL PARTNERS



REGIONAL TOUR



BLACK & WHITE BALL



WINNIPEG FRINGE THEATRE FESTIVAL



BEHIND THE SCENES

BOARD OF TRUSTEES

HONORARY MEMBERS

Her Honour, Lt. Governor Anita R. Neville
The Honourable Wab Kinew, Premier of Manitoba
His Worship, Mayor Scott Gillingham

EXECUTIVE OFFICERS

David Kroft, Chair
John Guttormson, Past Co-Chair
Laurie Speers, Past Co-Chair, Winnipeg Fringe Theatre Festival
Advisory Committee, Chair
Emily Burt, Treasurer & Organizational Performance Committee Chair
Jocelyne Prefontaine, Secretary
Claire Workman, Resource Development Committee Chair
Susan Freig, Governance & Strategic Planning Committee Chair
Nalini Reddy, Inclusion, Diversity, Equity & Access Committee Chair
Loren Remillard, Nominating Committee Chair

TRUSTEES

Blair Doell	Katrina Lee-Kwen
Brad Favel	Linda McGarva-Cohen
Kerry Feeney	Patrick McLenahan
Jessica Floresco	Sudhir Sandhu
James Kepp	Nicole Zajac

ADVISORY COUNCIL

John Guttormson, Chair	Colin R. MacArthur, KC
Gail Asper	Patrick J. Matthews
Doneta Brothie, CM	Jim McLandress
Angus Campbell	Jeffrey Morton, FCA
David Christie	Hon. Jack Murta
Gerry Couture	Lillian Neaman
Kerry Dangerfield	Lawrence Prout
Hy Dashevsky	Jeff Quinton
Glen Dyrda, FCA	Patricia Rabson
Anthony C. Fletcher	Margaret Redmond
Jean Giguere	Susan Skinner
Charron Hamilton	Al Snyder
Gary Hannaford, FCA	Maureen Watchorn
Ken Houssin	

STAFF

ACCOUNTING/FINANCE

Carlos Betonio, Payroll Coordinator
Misty Bromley, CPA, CGA, Director of Finance
Christina Smith, Accountant

ADMINISTRATION

Kurt Brown, HR Generalist
Randy Desrochers, Capital Projects Manager
Evan Klassen, Executive Director
Kathrin Moncaster, IT Manager

ARTISTIC

Melissa Langdon, Artistic Programs Coordinator
Isabelle Ly, Producer
Ian Ross, Program Director, Pimootayowin Creators Circle
Kelly Thornton, Artistic Director
Leslie Watson, Company Manager

BOX OFFICE

Meaghan Fletcher, Box Office Manager
Box Office Team Leads: Jane Hunter, Shayla Meeroff
Box Office Representatives: Sharon Bunn, Artie Lorraine,
Daniel Mitchell, Avery Mittermayr, Denise Piche,
Carolyn Schroeder, Tatiana Tuazon, Katie Welham

CARPENTRY (JOHN HIRSCH MAINSTAGE)

Chris Hadley, Layout Carpenter
Brent Letain, Master Carpenter
Chris Seida, Scenic Carpenter

DEVELOPMENT

Patrick Hanan, Development Database Specialist
Brendan McKeen, Individual Giving Manager
Stephanie Porrior, Event Coordinator
Heidi Struck, Director of Development

COMMUNITY ENGAGEMENT & AUDIENCE DEVELOPMENT

Colleen Hrabí, Director of Community Engagement & Audience Development
Janice Marple, Volunteer Manager
Cole Reuther, Front of House Manager
Assistant Front of House Managers: Julia Cirilo, Trish Cooper,
Vanessa Gates, Alyna Sikorsky, Amelia Tremblay, Aysia Watts
Front of House Staff: Dane Bjornson, Renelle Chartier,
Meagan Chrest, Chael Donald, Hannah Gilmore, Cassidy Groening,
Joanna Houston, Willow Isaac, Danielle Ladouceur,
Christine Leslie, Kimmy Martin, Keely Mcpeek, Lauren Minaker,
Christina Reid, Eve Ross Moore, Journey Skjaerlund,
Cobi Winston

MAINTENANCE

Mason Campbell, Building Custodian
Chris Fletcher, Building Manager

MARKETING & COMMUNICATIONS

Rachelle Blatta, Communications & Social Media Manager
Ksenia Broda-Milian, Education and Enrichment Manager
Sue Caughlin, Marketing & Communications Manager
Desiree La Vallee, Ticketing Application Specialist
Savannah Lillies, Marketing & Communications Coordinator
Christina Reuther, Sales Coordinator
Jocelyn Unrau, Director of Marketing & Communications

PAINT

Carla Schroeder, Head Scenic Artist
Larissa Shabaga, Interim Assistant Head Scenic Artist

PRODUCTION

Christine Corthey, Production Associate
Eiden French, Assistant Technical Director
Ian Kirk, Production Driver
Allison Loat, Director of Production
Donnie Osler, Technical Director
Katherine Race, Assistant Production Manager
Alex Sinclair, Associate Technical Director

PROPERTIES

Khaeler Bautista, Props Builder
Zoë Leclerc-Kennedy, Assistant Head of Props
Jamie Plummer, Head of Props

STAGE CREW

Kayla McSwain, Head of Wardrobe (Stage)
Claude Robert, Head Electrician
Jessica Rose, Head of Audio
Liam Shattuck, Head Stage Hand
Chris Thomson, Head Carpenter

TOM HENDRY WAREHOUSE

Meagan Chrest, Scenic Carpenter
Tim Clark, Head of Sound
Evan King, Head Electrician
Ryan Spracklin, Master Carpenter

WARDROBE

Thora Lamont, Lead Cutter
Martha Boyce, Wardrobe First Hand
Heather Thorleifson, Associate Head of Wardrobe
Jackie Van Winkle, Head of Wardrobe/Buyer

WIGS

Beverley Covert, Head of Wigs/Make-Up
Nico Pielou, Associate Head of Wigs/Make-Up
Victoria Stevens, Interim Head of Wigs/Make-Up

WINNIPEG FRINGE THEATRE FESTIVAL

Chuck McEwen, Executive Producer
Tori Popp, Festival Manager

HONORARY STAFF

Zaz Bajon, General Manager Emeritus
Steven Schipper, CM, OM, Artistic Director Emeritus

BEHIND THE SCENES

ADDITIONAL PRODUCTION STAFF

ELF - THE MUSICAL

Madison Bautista, Props Buyer
Linda Beech, Props Builder/Scenic Artist
Kate Berg, Scenic Artist
Penny Hanford, Stitcher
Ellen Hatley, Scenic Artist
Samantha Lekach, Stitcher
Karen Luchak, Stitcher
Barb MacKenzie, Stitcher
Van McLean, Scenic Carpenter
Denise Piche, Props Buyer
Robert Playter, Scenic Carpenter
Audrey Sawyer, First Hand
Kennedy Sembaliuk, Props Builder
Lela Stairs, Cutter
Sonya Vallis, First Hand
Andrea Von-Wichert, Scenic Artist
Joy Willis, Stitcher
Additional staff provided by IATSE Local 63

A NUMBER

Additional staff provided by IATSE Local 63

ROYAL
MTC
MANITOBA THEATRE CENTRE

Groups of 10 or more SAVE!

Contact Christina Reuther
to learn more or book today!

royalmtc.ca | 204 954 6413
sales@royalmtc.ca



Let us celebrate you.

Join the Founders' Circle today and your planned gift will ensure that Royal MTC will be a home for artists and arts lovers for generations.

We look forward to recognizing and celebrating your generosity, foresight, and commitment to Royal MTC's future starting today.

IF YOU HAVE ANY QUESTIONS, WE WOULD LOVE TO HEAR FROM YOU!

Contact Brendan at 204 954 6412 or bmckeen@royalmtc.ca



ROYAL
MTC
MANITOBA THEATRE CENTRE





Have you heard about DRAMA CLUB?

Do you want to know more about how theatre is made?

Drama Club connects you with the up-close, behind-the-scenes, a little bit dramatic content that you've been looking for.

Joining is easy and gives you some exclusive benefits. For as little as \$10 a month, you get:

- Two opportunities a year for the most exclusive, up-close tour of the backstage of our building;
- Monthly stories featuring props, costumes, upcoming artists, or legendary tales;
- Two special Drama Club-only events every year led by seasoned professionals.

Monthly giving is a budget-friendly way to spread your support throughout the year and make a transformational gift to Royal MTC.

Curious about monthly giving? Already a donor and interested in switching to monthly gifts?

Contact Brendan McKeen, Individual Giving Manager, at **204 954 6412** or **bmckeen@royalmtc.ca**.



ROYAL
MTC
MANITOBA THEATRE CENTRE

FillmoreRiley
VACATION PRIZE

LUXURY RIVER CRUISE FOR TWO

IN THE HEART OF BELGIUM & HOLLAND

**Enjoy an 8 day luxury river cruise for two with
TAUCK through the heart of Belgium and Holland.**

Flights provided by Air Canada. Travel dates are June 3 to 10, 2026.

Your trip must be booked no later than February 28, 2026.

Tickets are available for purchase in the lobby during performances of *Life of Pi* and *Elf: The Musical* or by phone. For further details, contact Patrick at 204 954 6411.

See royalmtc.ca/bw for full prize details & raffle rules.

Valued at over \$24,000
BUY TICKETS NOW!
1 for \$50, 3 for \$100

Proceeds in support of Royal MTC's
productions and programs.

ROYAL
MTC
MANITOBA THEATRE CENTRE

COURTESY OF



AIR CANADA

**BON
ADVENTURE**
TRAVEL

TAUCK 

1000 tickets available. LGCA License Number: LGCA 1523-RF-48866

GIVE THE GIFT OF GOOD TIMES

Treat loved ones this season with a
Keg gift card, available in-restaurant
or at thekeg.com.



WINNIPEG LOCATIONS
Garry St | St. James | Southside