

OVATION

ROYAL
MTC
MANITOBA THEATRE CENTRE

VOL 33 • NO 3
JAN/FEB 2026

Agatha Christie's
**MURDER
ON THE
ORIENT EXPRESS**



JOHN
HIRSCH
MAINSTAGE

Adapted for the stage by
KEN LUDWIG

TOM
HENDRY
WAREHOUSE

In partnership with Theatre Projects Manitoba

Holland

By Trish Cooper

PRODUCTION SPONSOR

THE
ASPER
FOUNDATION

TOM HENDRY WAREHOUSE
SEASON SPONSOR

BMO





University
of Manitoba

BISONS STRENGTHEN INDIGENOUS FOOD SYSTEMS

Wild rice—called manoomin in Anishinaabemowin—has nourished Indigenous peoples for thousands of years. Today, it holds new possibilities for sustainable agriculture. Cree-Métis researcher Dr. Az Klymiuk studies how climate change, soil chemistry and fungal partners shape Canada's only native grain. Working alongside Indigenous partners, they're discovering how manoomin grows as environments shift, creating economic opportunities and ensuring traditional foods nourish future generations.

MESSAGE FROM THE ARTISTIC DIRECTOR



Kelly Thornton

Happy New Year! It is my pleasure to welcome you to Royal MTC for two remarkable offerings in both the Mainstage and Warehouse theatres. Ken Ludwig's adaptation of Agatha Christie's *Murder on the Orient Express* takes us into the sumptuous world of 1930s art deco, with an array of intriguing characters on board the world's most luxurious train. Trish Cooper's *Holland*, on the other hand, brings us into a more present-day setting, the here and now of Winnipeg, with a cast of everyday heroes just trying to get by.

While the plays are vastly different, one period, one contemporary, one the epitome of opulence and privilege, the other an unglamorous exposé of a family in the system, both are united by a defining theme. Each play examines the nature of justice, both as a principle of the legal system but also as a broader ethical ideal.

As the famous Belgium detective Hercule Poirot weighs the evidence, deliciously dissecting each clue, we are enveloped in a world of suspense. But at the heart of Christie's novel is a man who must confront everything he has known to be true, where his moral code comes face to face with the realization that the legal system is not infallible. Hercule has been described as a psychological detective, and indeed *Orient Express* is a masterful lesson in human behaviour.

Similarly, Carrie and Paul's adherence to Children's Special Services for the support of their disabled son is without debate. But Cooper's play unveils a system that sometimes outweighs the individual as it processes people. If not personally frustrating, this system can push people to a breaking point, and Cooper explores this point of rupture to brilliant comic effect.

Whether a murder mystery or an outrageous comedy, both these plays are wildly entertaining and wrestle with complex ideas of what it means to be human.

Welcome, and enjoy the show!

A handwritten signature in black ink, which appears to read 'Kelly'.

Royal Manitoba Theatre Centre is proud to call Manitoba home. Royal MTC is located in Winnipeg on Treaty 1, the traditional territory of the Anishinaabeg, Inninewak, Anishinewak, Dakota Oyate and Denesuline, and the National Homeland of the Red River Métis. We are thankful for the benefits sharing this land has afforded us, acknowledge the responsibilities of the Treaties, and embrace the opportunity to partner with Indigenous communities in spirit of reconciliation and collaboration.

THEATRE ABBREVIATION LEGEND

A.C.T. American Conservatory Theater • San Francisco, CA	Rainbow Rainbow Stage • Winnipeg, MB
Arts Club Arts Club Theatre Company • Vancouver, BC	RNT Royal National Theatre • London, England
ATF Atlantic Theatre Festival • Wolfville, NS	Royal Alex The Royal Alexandra Theatre • Toronto, ON
ATP Alberta Theatre Projects • Calgary, AB	RSC Royal Shakespeare Company • Stratford-upon-Avon, England
BAM Brooklyn Academy of Music • NYC	RWB Royal Winnipeg Ballet • Winnipeg, MB
Bard on the Beach Bard on the Beach Shakespeare Festival • Vancouver, BC	Sarasvati Sarasvati Productions • Winnipeg, MB
Belfry The Belfry Theatre • Victoria, BC	Segal The Segal Centre for Performing Arts • Montreal, QC
Blyth Blyth Theatre Festival • Blyth, ON	Shaw Shaw Festival • Niagara-on-the-Lake, ON
Broadway Theatre district • New York, NY	SIR Shakespeare in the Ruins • Winnipeg, MB
CBC Canadian Broadcasting Corporation	Soulpepper Soulpepper Theatre Company • Toronto, ON
Centaur Centaur Theatre Company • Montreal, QC	Stratford Stratford Festival • Stratford, ON
Citadel The Citadel Theatre • Edmonton, AB	SummerWorks SummerWorks Theatre Festival • Toronto, ON
COC Canadian Opera Company • Toronto, ON	TA Theatre Aquarius • Hamilton, ON
CS Canadian Stage • Toronto, ON	Tarragon Tarragon Theatre • Toronto, ON
Dora Dora Mavor Moore Award • Toronto, ON	TBTR Theatre by the River • Winnipeg, MB
Drayton Drayton Entertainment • Ontario	TC Theatre Calgary • Calgary, AB
Dry Cold Dry Cold Productions • Winnipeg, MB	TiFT Talk is Free Theatre • Barrie, ON
Factory Factory Theatre • Toronto, ON	TNB Theatre New Brunswick • Fredericton, NB
GCTC The Great Canadian Theatre Company • Ottawa, ON	Toronto Free Toronto Free Theatre • Toronto, ON
Grand The Grand Theatre • London, ON	TPM Theatre Projects Manitoba • Winnipeg, MB
HGJT Harold Green Jewish Theatre Company • Toronto, ON	TSO Toronto Symphony Orchestra
Mirvish Mirvish Productions • Toronto, ON	U of M University of Manitoba
Moving Target Moving Target Theatre Company • Winnipeg, MB	U of T University of Toronto
MTYP Manitoba Theatre for Young People • Winnipeg, MB	U of W University of Winnipeg
NAC National Arts Centre • Ottawa, ON	ViC The Village Conservatory for Music Theatre • Winnipeg, MB
Necessary Angel Necessary Angel Theatre Company • Toronto, ON	VP Vancouver Playhouse Theatre Company • Vancouver, BC
Neptune Neptune Theatre • Halifax, NS	West End Theatre district • London, England
NFB National Film Board of Canada	WCT Western Canada Theatre • Kamloops, BC
NTS National Theatre School of Canada • Montreal, QC	WJT Winnipeg Jewish Theatre
Persephone Persephone Theatre • Saskatoon, SK	WSO Winnipeg Symphony Orchestra
PTAM Popular Theatre Alliance of Manitoba • Winnipeg, MB	WST Winnipeg Studio Theatre
PTE Prairie Theatre Exchange • Winnipeg, MB	YPT Young People's Theatre • Toronto, ON
	zone41 zone41 theatre • Winnipeg, MB

OVATION

VOLUME 33, NUMBER 3
JANUARY/FEBRUARY 2026

Ovation is published six times per theatre season and has an approximate yearly circulation of 85,000.

PRINTING: Premier Printing Ltd.

ADVERTISING INQUIRIES

Christina Reuther
TELEPHONE: 204 954 6413
EMAIL: sales@royalmtc.ca



Royal Manitoba Theatre Centre
174 Market Avenue
Winnipeg, MB R3B 0P8
Canada

RoyalMTC.ca

BOX OFFICE: 204 942 6537
ADMINISTRATION: 204 956 1340
FAX: 204 947 3741

Royal MTC is a member of the Professional Association of Canadian Theatres and engages, under the terms of the Canadian Theatre Agreement, professional artists who are members of the Canadian Actors' Equity Association.

Scenery, Carpentry and Show Running Crew at the John Hirsch Mainstage and the Tom Hendry Warehouse are members of IATSE Local 63.

USHERS • Royal MTC's loyal volunteer ushers are available at every performance to assist patrons.

LATECOMERS • Latecomers will be seated at the discretion of the House Manager.

COURTESY TO OTHERS • Talking, candy wrappers and coughing are distracting to fellow patrons and actors. We ask each patron to please keep noise to a minimum during a performance. Thank you for your cooperation.

SCENTS AND ALLERGIES • A number of Royal MTC patrons have expressed concerns regarding medical reactions caused by scented products, so much so that they can't enjoy the show. Please consider others before using items such as colognes, perfumes and hairspray. Your thoughtfulness is appreciated.

HEARING ENHANCEMENT • FM Listening Devices are available free of charge in the lobby at the John Hirsch Mainstage and Tom Hendry Warehouse. Please see the House Manager for details.

PROHIBITED • The use of cameras and recording devices is strictly prohibited. Mobile devices must be turned off. To be contacted in an emergency, leave your name and seat number with the House Manager.

WARNINGS • On occasion, Royal MTC's productions may contain script-specific smoking of non-tobacco products, special effects and language/content warnings. For more information on specific productions, please visit royalmtc.ca.

NEXT AT THE JOHN HIRSCH MAINSTAGE

Royal MTC presents
A Crow's Theatre Production

Rogers *v.* Rogers

Adapted for the stage by
Michael Healey

Based on the book by
Alexandra Posadzki

CRITIC'S PICK "A dizzying one-man
showcase for Tom Rooney." - GLOBE & MAIL

FEB 18 — MAR 14

Photo of Tom Rooney by Dahlia Katz

NEXT AT THE TOM HENDRY WAREHOUSE

MAR 11 — 28

Sacred fire by Rhonda Apetagon

IN THE SHADOW BEYOND THE PINES

BY RHONDA APETAGON

RoyalMTC.ca 204 942 6537

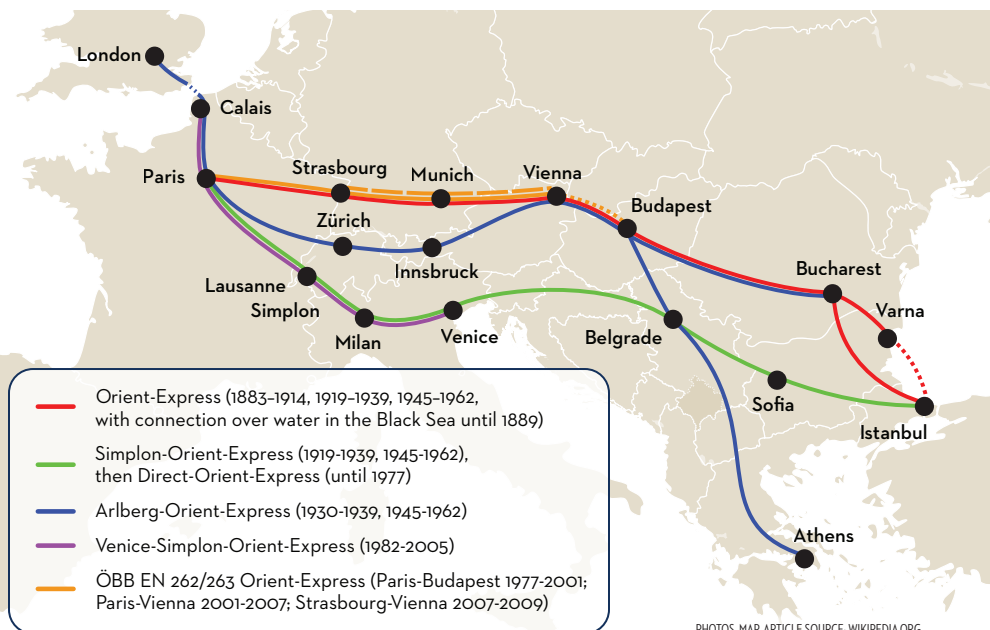


The World's Most Famous Train



The Orient Express was a long-distance passenger luxury train service created in 1883 by the Belgian company Compagnie Internationale des Wagons-Lits (CIWL) that operated until 2009. The train travelled the length of Europe, with terminal stations in Paris in the northwest and Istanbul in the southeast, and branches extending service to Athens, Brussels and London.

The Orient Express embarked on its initial journey on June 5, 1883, from Paris to Vienna, eventually extending to Istanbul, thus connecting the western and eastern extremities of Europe. The route saw alterations and expansions, including the introduction of the Simplon Orient Express following the opening of the Simplon Tunnel in 1919, enhancing the service's allure and importance. Several routes concurrently used the Orient Express name, or variations. Although the original Orient Express was simply a normal international railway service, the name became synonymous with intrigue and luxury rail travel. The city names most prominently served and associated with the Orient Express are Paris and Istanbul, the



PHOTOS, MAP, ARTICLE SOURCE: WIKIPEDIA.ORG

MURDER ON THE ORIENT EXPRESS

original termini of the timetabled service. The rolling stock of the Orient Express changed many times.

However, following World War II, the Orient Express struggled to maintain its pre-eminence amid changing geopolitical landscapes and the rise of air travel. The route stopped serving Istanbul in 1977, cut back to a through over-night service from Paris to Bucharest, which was cut back further in 1991 to Budapest, then in 2001 to Vienna, before departing for the last time from Paris on June 8, 2007. After this, the route, still called the Orient Express, was shortened to start from Strasbourg, leaving daily after the arrival of a TGV from Paris. On December 14, 2009, the Orient Express ceased to operate entirely and the route disappeared from European railway timetables, a “victim of high-speed trains and cut-rate airlines.”

In contemporary times, the legacy of the Orient Express has been revived through private ventures such as the Venice Simplon-Orient-Express, initiated by James Sherwood in 1982, which offers nostalgic journeys through Europe in restored 1920s and 1930s CIWL carriages, including the original route from Paris to Istanbul. Since December 2021, an ÖBB Nightjet runs three times per week on the Paris-Vienna route, although not branded as Orient Express. In late 2022, Accor announced plans to launch its own Orient Express in late 2026 with journeys from Paris to Istanbul. ●



Wooden restaurant car from the Orient Express displayed in the Railway Museum in Utrecht. CIWL WR 2287 from 1911.

Agatha Christie PLAYS ON MTC STAGES



AND THEN THERE WERE NONE

1997, Lawyers Play

BLACK COFFEE

2017, Mainstage

TEN LITTLE INDIANS

1987, Mainstage

THE MOUSETRAP

1989, Regional Tour

1990, Mainstage

2012, Lawyers Play

WITNESS FOR THE PROSECUTION

2018, Lawyers Play

Photo: Lorne Kennedy and
Ross McMillan in *Black Coffee*.

PHOTO BY DYLAN HEWLETT

About Hercule Poirot

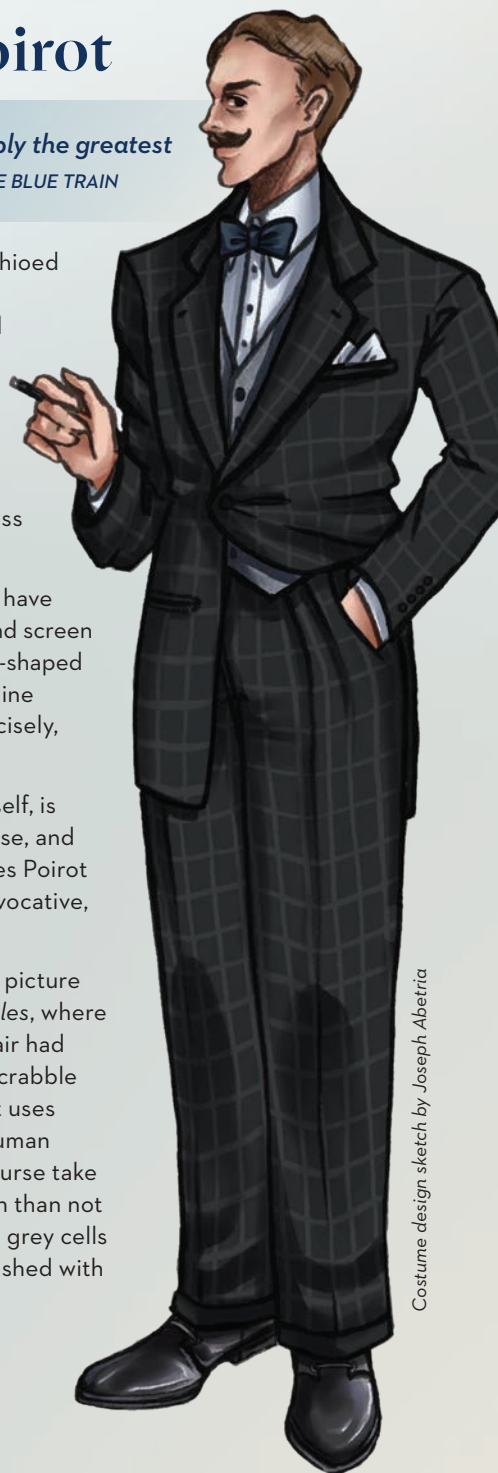
"My name is Hercule Poirot and I am probably the greatest detective in the world." – *THE MYSTERY OF THE BLUE TRAIN*

Hercule Poirot: the world-renowned, moustachioed Belgian private detective, unsurpassed in his intelligence and understanding of the criminal mind, respected and admired by police forces and heads of state across the globe. Since his inception over 100 years ago, Poirot has stolen the hearts and minds of audiences from Azerbaijan to Vietnam, and his celebrated cases have been recorded across 33 original novels and over 50 short stories.

Standing at a diminutive 5' 4" – although there have been various interpretations of this on stage and screen – Poirot's described in writing as having an egg-shaped head, often tilted to one side, and eyes that shine green when he's excited. He dresses very precisely, and takes the utmost pride in his appearance.

Perhaps even more famous than the man himself, is his moustache. Luxurious, magnificent, immense, and dedicatedly groomed, the moustache precedes Poirot into a room; it's a unique talking point, it's provocative, and it has a character all of its own.

Poirot's friend Hastings puts us straight in the picture in their first book, *The Mysterious Affair at Styles*, where we're informed that "as a detective, Poirot's flair had been extraordinary". While some detectives scramble around on the floor searching for clues, Poirot uses psychology and his extensive knowledge of human nature to weed out the criminals. He will of course take physical evidence into account, but more often than not his combination of order, method and his little grey cells does the trick. Poirot's cases are invariably finished with a typical, dramatic denouement, satisfying his own ego and confirming to all that he is truly "the greatest mind in Europe." ●



Costume design sketch by Joseph Abetria



The Citadel Theatre is proud to present
MURDER ON THE ORIENT EXPRESS
with the Royal Manitoba Theatre Centre.

Located in the heart of Edmonton's Arts District, the Citadel is one of North America's largest not-for-profit theatres, featuring five performance venues and the Foote Theatre School, offering theatre education and opportunities for all ages.

For 60 seasons, the Citadel Theatre has brought stories to life on stage - sharing classics, contemporary works, musicals, and family favorites that inspire and connect audiences and artists from Edmonton to Manitoba - and across Canada. Enjoy the show!

60
YEARS

**THE
CITADEL
THEATRE**

CITADELTHEATRE.COM

Daryl Cloran, **Artistic Director**
Jessie van Rijn, **Executive Director**

Murder on the Orient Express

Taylor McCaffrey is proud to be the opening night sponsor of Royal MTC and gratefully acknowledges the rich contribution made by Manitoba's Arts Community to our province.

**TAYLOR
McCAFFREY**
LAWYERS



PRESENTS

IN PARTNERSHIP WITH THE CITADEL THEATRE

Agatha Christie's Murder on the Orient Express

Adapted for the stage by
Ken Ludwig

January 15 - February 7, 2026

PREVIEW January 14

Director Kelly Thornton
Set Designer Brian Perchaluk**†
Costume Designer Joseph Abetria†
Lighting Designer Hugh Conacher**
Associate Lighting Designer April Viczko**
Sound Designer Dave Clarke
Fight Director Jacquie Loewen
Intimacy Director Sharon Bajer†
Dialect Coach Jane Gooderham
Assistant Director Ava Darrach-Gagnon
Assistant Costume Designer Katherine Hochman
Stage Manager Katie Hoppa
Assistant Stage Manager Zahra Larche
Apprentice Stage Manager Tia Morann

Agatha Christie's Murder on the Orient Express is presented by arrangement with
Concord Theatricals on behalf of Samuel French, Inc. www.concordtheatricals.com

Agatha Christie's Murder on the Orient Express adapted by Ken Ludwig
was originally staged by McCarter Theater Center, Princeton, NJ
Emily Mann, Artistic Director, Timothy J. Shields, Managing Director.
The production subsequently transferred to Hartford Stage, Hartford, CT
Darko Tresnjak, Artistic Director, Michael Stotts, Managing Director

"Alexander's Ragtime Band" (Irving Berlin) Irving Berlin Music Co., administered in Canada by
Williamson Music Co. (ASCAP), a division of The Rodgers & Hammerstein Organization: a Concord Company.

THE VIDEOTAPING OR MAKING OF ELECTRONIC OR OTHER AUDIO AND/OR VISUAL RECORDINGS OF THIS
PRODUCTION AND DISTRIBUTING RECORDINGS OR STREAMS IN ANY MEDIUM, INCLUDING THE INTERNET,
IS STRICTLY PROHIBITED, A VIOLATION OF THE AUTHOR(S)'S RIGHTS AND ACTIONABLE UNDER UNITED
STATES COPYRIGHT LAW. FOR MORE INFORMATION, PLEASE VISIT:

www.concordtheatricals.com/resources/protecting-artists

Production photography by Dylan Hewlett.

**Indicated designers on this production are represented by the Associated Designers of Canada, IATSE Local ADC659

*Position funded through the Jean Murray - Moray Sinclair Theatre Apprenticeship Program

†Past Jean Murray - Moray Sinclair apprenticeship or scholarship recipient

Agatha Christie's Murder on the Orient Express

THE CAST (IN ALPHABETICAL ORDER)

Mary Debenham	Jill Agopsowicz
Michel the Conductor / Head Waiter	Rodrigo Beilfuss†
Colonel Arbuthnot	Daniel Briere
Countess Andrenyi.....	Dutchess Cayetano
Helen Hubbard	Donna Fletcher
The Nanny	Kristin Johnston
Hector MacQueen	Tom Keenan
Samuel Ratchett	Ian Leung
Hercule Poirot.....	Alex Poch Goldin
Greta Ohlsson	RobYn Slade
Princess Dragomiroff.....	Davina Stewart
Constantine Bouc.....	Ray Strachan†

Daisy Armstrong is voiced by Isla Verot

UNDERSTUDIES

Understudies never substitute for listed performers unless a specific announcement is made at the time of their appearance.

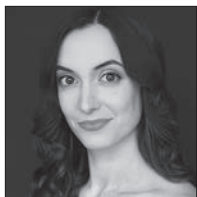
Constantine Bouc, Hector MacQueen, Samuel Ratchett	Daniel Briere
Princess Dragomiroff.....	Donna Fletcher
Greta Ohlsson, Countess Andrenyi, Helen Hubbard	Kristin Johnston
Hercule Poirot, Michel the Conductor / Head Waiter, Colonel Arbuthnot	Ian Leung
Mary Debenham	RobYn Slade

SETTING: Takes place aboard the Orient Express as it travels from Istanbul to Western Europe in 1934.

Agatha Christie's Murder on the Orient Express is performed with one intermission.

SYNOPSIS – On board the opulent Orient Express, famed detective Hercule Poirot is hoping for a quiet journey from Istanbul to Calais. When the train becomes stranded in a snowstorm, American businessman Samuel Ratchett is brutally murdered while locked in his compartment. With the killer at large, and potentially still on board, a colourful cast of passengers become suspects in a tightening web of fear and suspense. As Poirot digs deeper, nerves crack and secrets surface, leading to a revelation so startling it shakes the very meaning of justice. ●

AGATHA CHRISTIE'S MURDER ON THE ORIENT EXPRESS



Jill Agopsowicz

Mary Debenham

ROYAL MTC First appearance.

OTHER THEATRE *Grease, Rock of Ages, Mamma Mia!, Sister Act, All Shook Up!* (Mayfield Theatre); *The Last Christmas Turkey* (Orangeville Theatre); *One Man, Two Guvnors* (Citadel); *Anne of Green Gables: The Musical* (TC).

FILM/TV *Hot Zone: Anthrax* (Disney+); *The Umbrella Academy* (Netflix); *Workin' Moms* (CBC); *Wet Bum* (Galloping Cow Productions).

TRAINING Randolph College for the Performing Arts.

ET CETERA Jill would like to thank her wonderful family and friends, Jess and the whole 10 Talent team, and her husband Brandon for their constant love and support. Thank YOU for supporting live theatre!



Rodrigo Beilfuss

*Michel the Conductor
/ Head Waiter*

ROYAL MTC Actor: *A Number, Little Women, The Three Musketeers*. Assistant Director: *Private Lives*.

OTHER THEATRE (selected) Actor: Four seasons at Stratford Festival (2016-2019); *The Player King* (SIR); *A Dance to the End of the World* (PTE). Director: *The Year of Magical Thinking, Pandora* (PTE); *Waiting for Godot, A Midsummer Night's Dream, Iago Speaks, The Dark Lady, Hamlet* (SIR).

FILM/TV *Nobody 2; Intersection; The Snow Must Go On, The Santa Summit, Snowkissed* (Hallmark).

TRAINING Birmingham Conservatory (Stratford); MA in Classical Acting from LAMDA (UK); BA (Honours) from the University of Winnipeg; Michael Langham Workshop (Stratford).

ET CETERA Rodrigo is the Artistic Director of Shakespeare in the Ruins (SIR).



Daniel Briere

Colonel Arbuthnot

Understudy: Constantine Bouc, Hector MacQueen, Samuel Ratchett

ROYAL MTC Ashley Wilkes in *Gone with the Wind*.

OTHER THEATRE Torvald Helmer in *A Doll's House* (Arts Club/TC); Sherlock Holmes in *Sherlock Holmes and the Vanishing Hour* (St. Lawrence Shakespeare); Charles Condomine in *Blithe Spirit* (Watermark Theatre); Romeo in *Romeo and Juliet* (Stratford).

TV *Mayday, Titans, Imposters, Rookie Blue, Murdoch Mysteries*.

TRAINING Graduate of National Theatre School of Canada.

ET CETERA Daniel is thrilled to be back at Royal MTC. Never one to pass on a challenge, Daniel has built puppets for shows, written music, twirled from silks, animated a flying canoe and died onstage in the first five minutes of a 45 minute act.

CORRIENTES PIZZA
Argentine Pizzeria

Dine with us before the show!

137 Bannatyne Ave • 204 219 5398
corrientes.ca



Kevin's

BISTRO

A vibrant dining experience in the heart of Winnipeg's Exchange District **with weekly live music!**

141 Bannatyne Ave., Winnipeg

For Reservations, visit opentable.com or call us at 204.221.5028

kevinsbistro.ca

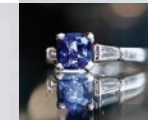
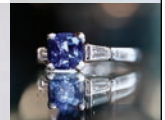


| D | I | A | M | O | N | D |
| G | A | L | L | E | R | Y |

1735 CORYDON AVENUE

Locally owned and operated by the Malbranc family since 1992. Specializing in Canadian crafted custom designs and responsibly sourced gemstones. Shop online 24/7 or contact us to book your professional jewellery consultation.

DIAMOND-GALLERY.COM



AGATHA CHRISTIE'S MURDER ON THE ORIENT EXPRESS



Dutchess Cayetano

Countess Andrenyi

ROYAL MTC First appearance.

OTHER THEATRE *Frozen*, *Rock of Ages*, *Ma-Buhay! A New Musical*, *The Little Mermaid* (Rainbow); *The Paper Bag Princess*, *Prairie Nurse* (PTE); *Red Earth* (One Trunk); *Reefer Madness* (WST); North American Tours: *Shopkins Live!*, *Pinkfong & Baby Shark* (KOBA).

FILM/TV Coco in *Match Meet Murder* (Lifetime); Olivia in *The Spencer Sisters* (CTV); Social Sandy in MPI Safe Driving Commercial (MPI).

TRAINING Graduate of the Canadian College of Performing Arts.

ET CETERA Dutchess is over the moon to be making her Royal MTC Mainstage debut embarked on the Orient Express with this extraordinary cast and crew. Special thanks to her friends and family, the real conductors behind the scenes keeping her on track. Enjoy the ride!



Donna Fletcher

Helen Hubbard

*Understudy:
Princess Dragomiroff*

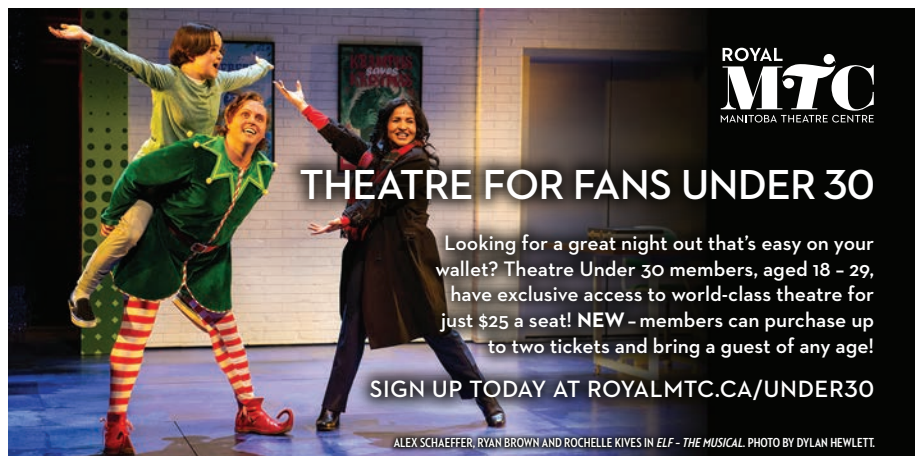
ROYAL MTC Favourites include *Our Town*, *Lady be Good!*, *Master Class* (with NAC).

OTHER THEATRE Actor highlights: *Brighton Beach Memoirs* (Drayton); *Beauty and the Beast* (TA); *Johnny Belinda*, *Anne of Green Gables* (Charlottetown Festival); *Little Shop of Horrors* (Persephone); *I Love You, You're Perfect, Now Change* (Belfry, PTE); *Guys and Dolls* (Stage West); 16+ shows including *Sister Act* and *CATS* (Rainbow); *A Little Night Music*, *Follies* (Dry Cold). Director: *Phantom of the Opera*, *Into the Woods* (OOTA); *Annie*, *South Pacific* (Rainbow); *Sweeney Todd*, *Merrily We Roll Along* (Dry Cold); *No Change in the Weather* (TerraBruce).

FILM/TV *The Best Christmas Pageant Ever*; *A Suite Holiday Romance*, *The Snow Must Go On* (Hallmark).

TEACHING Instructor at U of M Desautels Faculty of Music and U of W Department of Theatre & Film.

ET CETERA Co-founder of Dry Cold Productions; Rainbow Stage Wall of Fame; proud mum to Amalia (born on Agatha Christie's birthday!).



ROYAL MTC
MANITOBA THEATRE CENTRE

THEATRE FOR FANS UNDER 30

Looking for a great night out that's easy on your wallet? Theatre Under 30 members, aged 18 - 29, have exclusive access to world-class theatre for just \$25 a seat! **NEW** - members can purchase up to two tickets and bring a guest of any age!

SIGN UP TODAY AT ROYALMTC.CA/UNDER30

ALEX SCHAEFFER, RYAN BROWN AND ROCHELLE KIVES IN *ELF - THE MUSICAL*. PHOTO BY DYLAN HEWLETT.

UPTOWN_{F+B}

RESTAURANT AND WINE BAR

Contemporary cuisine, an elevated
wine list & eclectic cocktails with
Free Valet Parking at the iconic
Portage and Main.

204.938.8696 | 529uptownwpg.com

Hours: Monday, 11:30 a.m. – 3 p.m.

Tuesday – Friday, 11:30 a.m. – 8 p.m.

Complimentary Valet Parking



Real food from the land...

At Peasant Cookery we have a passion for
transforming fresh ingredients into original and trend-
forward cuisines. Our rustic, seasonally inspired menu,
famous housemade charcuterie, combined with
exceptional service and inviting bistro atmosphere
are an experience not to be missed.



100-283 Bannatyne 204.989.7700

AGATHA CHRISTIE'S MURDER ON THE ORIENT EXPRESS



Kristin Johnston

The Nanny

Understudy: Greta Ohlsson, Countess Andrenyi, Helen Hubbard

ROYAL MTC First appearance.

OTHER THEATRE *Vinyl Café: the Musical*, *A Christmas Carol*, 9 to 5: *The Musical*, *Sense and Sensibility* (Citadel); *The Odd Couple*, *Pith!*, *Deathtrap* (Teatro Live!); *Enough, We Had A Girl Before You*, *Baroness Bianka's Bloodsongs* (Northern Light Theatre); *Dance Nation* (SkirtsAfire).

FILM *Before I Change My Mind* (Crave).

TRAINING Citadel/Banff Centre Professional Training Program, Canadian College of Performing Arts, RDC Theatre Studies.

ET CETERA Kristin is a musical theatre instructor and award-winning choreographer. She also received four Sterling nominations. Many thanks to Ash and her three kids for taking care of the dog while she is away.



Tom Keenan

Hector MacQueen

ROYAL MTC Selected: *Little Women*, among men (with TPM), *Bang Bang* (with Belfry), *The Cottage*, *Sense and Sensibility*, *The Humans*, *Shakespeare in Love* (with Citadel), *Sarah Ballenden*, *Hand to God*, *Unnecessary Farce*, *The Seagull*, *Gone with the Wind*, *Mrs. Warren's Profession*, *A Christmas Carol*.

OTHER THEATRE Selected: *Macbeth*, *Waiting for Godot*, *Twelfth Night*, *Much Ado*, *The Winter's Tale*, *The Comedy of Errors*, *R & J*, *Henry IV* (SIR); *Goodnight Desdemona...*, *White Rabbit Red Rabbit*, *Beethoven Blatz*

(TPM); *Snow White*, *The Velveteen Rabbit* (MTYP); *By Grand Central Station* (PTE); *Hedda Gabler* (Echo Theatre); *Am I Not King?*, *Three Sisters* (zone41); *Dear Johnny Deere* (Persephone); *Ring of Fire* (Rainbow).

FILM/TV Selected: *Don't Even* (Crave/APTN); *Melaleuca* (4Head); *First Person Shooter* (Cartel/Tubi); several Hallmarks; *Burden of Truth* (CBC); *Channel Zero* (NBC/Universal); *Night Hunter* (Palmstar); *The Pinkertons* (Buffalo Gal); *House Party* (Comedy); *Something Beneath* (Peace Arch); *The Crooked E* (CBS).

ET CETERA Also a musician (as Tommy Douglas Keenan). He has an album coming out this year! Visit tommydouglaskeenan.com or find him wherever you listen to music.



Ian Leung

Samuel Ratchett

Understudy: Hercule Poirot, Michel the Conductor / Head Waiter, Colonel Arbuthnot

ROYAL MTC First appearance.

OTHER THEATRE *As You Like It*, *Measure for Measure*, *A Midsummer Night's Dream*, *Much Ado About Nothing*, *Romeo and Juliet* (Freewill Shakespeare Festival); *On Golden Pond* (Mayfield Dinner Theatre); *Deathtrap* (Teatro Live!); *A Doll's House Part 2* (Wildside Productions); *The Hunchback Variations* (Edmonton International Fringe Festival); *The Blue Hour* (SkirtsAfire Festival).

FILM/TV Film: *Hands that Bind*, *Prince Charming*. TV: *Mutant X*, *Soul Food*.

TRAINING Graduate of the University of Alberta's BFA Acting and MFA Directing programs.

ET CETERA ianleung.ca tn6.ca



DISTINCTIONS

RARE AND EXCEPTIONAL



YOU HAVE DISCERNING TASTE

Distinctions offers access to a selection of the world's most exceptional spirits and wines. We invite you to explore our hand-picked collection and take home that rare find today.



DISCOVER DISTINCTIONS
LiquorMarts.ca/Distinctions

AGATHA CHRISTIE'S MURDER ON THE ORIENT EXPRESS



Alex Poch Goldin

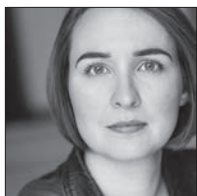
Hercule Poirot

ROYAL MTC *Indecent, The Lehman Trilogy, Network, Trouble in Mind, Bang Bang* (Evie Award), *King Lear, Scorched, My Name is Asher Lev* (Meta Award), *Quills*. Directing: *A Number*.

OTHER THEATRE *The Master Plan* (Globe); *The Lehman Trilogy* (TC); *Prayer for the French Republic* (Segal); *The Dybbuk, Incident at Vichy* (Soulpepper - Dora Award); *Oslo* (Mirvish); *Angels in America, Intimate Apparel, Comedy of Errors, The Tempest* (Canadian Stage); *Belle* (NAC); *Amadeus, Possible Worlds* (TIFT/Munich). Alex has published/produced several plays and is completing a residency for WJT (Edenbridge) and a commission for Royal MTC (*Intrepid*). His play *The Right Road to Pontypool* was read at WJT this past November.

FILM/TV *Haunted Wedding, Little Bird, The Porter, Suits, Never Been Chris'd, Murdoch Mysteries, Cardinal, Flashpoint*.

ET CETERA alexpochgoldin.com. Love to Chloe Babette!



RobYn Slade

Greta Ohlsson

*Understudy:
Mary Debenham*

ROYAL MTC *Yaga, All is Bright, The Cottage, Steel Magnolias, One Flew Over the Cuckoo's Nest* (understudy).

OTHER THEATRE *Goodnight, Desdemona* (*Good Morning, Juliet*) (TPM); *Danny and the Deep Blue Sea* (The Keep Theatre); *Outside Joke's Holiday Musical Extravaganza, Christmas Miracle: An*

Improvised Holiday RomCom, A Christmas Carol: Big & Bigger Dickens Energy and The Improvised Musical, MunschBusters!, The Gravitational Pull of Bernice Trimble, The Brink, How It Works (PTE); *New Canadian Kid, IMPROVident* (MTYP); *204FM* (One Trunk Theatre).

ET CETERA RobYn is a member of Winnipeg's hallowed musical improv company Outside Joke and the voice of *Tayo, the Little Bus* on Netflix.



Davina Stewart

Princess Dragomiroff

ROYAL MTC First appearance.

OTHER THEATRE Davina is an award-winning actress and improviser. Selected acting credits include: *The Importance of Being Ernest, Suddenly Last Summer, An Ideal Husband* (Citadel); *Where You Are, Cottagers and Indians, Vanya, Sonia, Masha and Spike* (Shadow Theatre); *Squeamish* (Northern Light Theatre); *MOB* (Workshop West); *Cocktails at Pam's, Pith!* (Teatro Live!); *Marion Bridge, A Beautiful View* (Theatre Network); *Woman Caught Unaware* (Uno Festival). Directing credits include: *Prettier Woman, It's a Wonderful Christmas Carol* (Spotlight); *The Hunchback Variations* (Edmonton Fringe).

FILM/TV *EOS 30* (Producer/Lead - Potluck Productions); *The Only Girl in the Gym* (Producer/Host - Telus StoryHive).

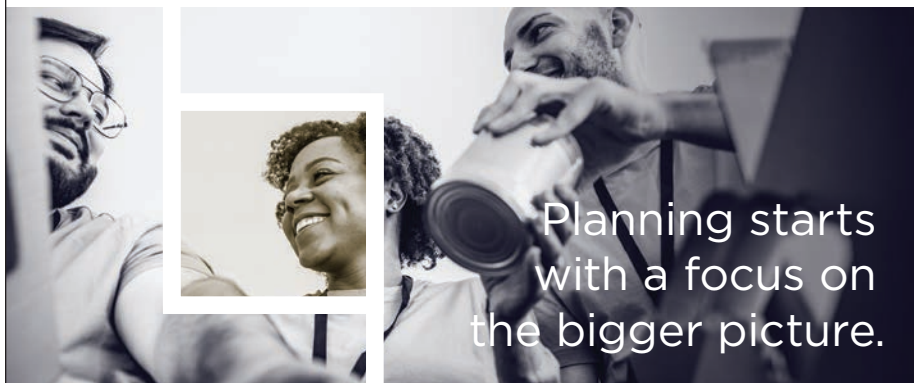
TRAINING Graduate of the University of Alberta BFA Acting program.

ET CETERA *Virescit vulnere virtus!*



**Life's a journey.
Save for it.**

[SCU.MB.CA/SAVEFORIT](https://scu.mb.ca/saveforit)



At Lawton Partners, we guide our clients with insight and experience.
We believe it's important to be leaders in our community as well as in business.

You belong in the
company of leaders.
lawtonpartners.ca

 **Lawton Partners**
WEALTH MANAGEMENT

AGATHA CHRISTIE'S MURDER ON THE ORIENT EXPRESS



Ray Strachan

Constantine Bouc

ROYAL MTC Actor: *The Play That Goes Wrong* (with Citadel/TC), *The Mountaintop, Into the Woods, The Three Musketeers, Calpurnia* (with NAC/BTW), *It's a Wonderful Life: The Radio Play, Shakespeare in Love* (with Citadel), *The Man Who Shot Liberty Valance, Romeo and Juliet, One Flew Over the Cuckoo's Nest* (with TC). Director: King James.

OTHER THEATRE Actor: *The Brothers Paranormal* (Vertigo); *The Mountaintop, The Tempest* (Citadel); *Feast* (PTE); *The Prom* (Dry Cold); *Deserter, Remember the Night* (Moving Target); *The Whipping Man* (WJT); *Rosencrantz & Guildenstern Are Dead* (Black Hole). Director: *Billie and the Moon, The Velveteen Rabbit* (MTYP); *Hedda Gabler* (Echo).

FILM/TV *The Porter* (CBC Gem/BET); *Violent Night* (Universal Pictures); *Vandits, Don't F*** with Ghosts* (57 Films); *The Best Christmas Pageant Ever* (Lionsgate).

TRAINING Black Hole Theatre; Banff Centre.

ET CETERA Ray dedicates this performance to his Mom, who always inspires him with her love for life, family and friends. Always leading with an open heart, generous soul, and a spirit of adventure, like M. Bouc. Love you Ma! Hugs to Dad, Gerls and Zay.



Agatha Christie

Original Author

Born in Torquay, England in 1890, Agatha Christie is the best-selling novelist of all time. With over one billion books sold in English and another billion in over 100 languages, she is outsold only by the Bible

and Shakespeare. She wrote 80 crime novels and collections of short stories, over 25 plays (including *The Mousetrap*, the world's longest running play), and six novels under the pseudonym Mary Westmacott. Her first novel, *The Mysterious Affair at Styles*, introduced the world to the Belgian detective Hercule Poirot, followed a decade later by the shrewd and often-underestimated Miss Marple.



Ken Ludwig

Stage Adaptation

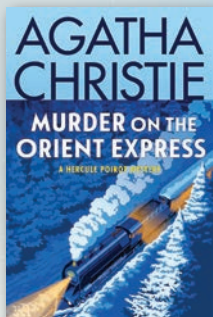
Ken Ludwig is an internationally acclaimed playwright who had six shows on Broadway and eight in the West End. He has won the Edwin Forrest Award, two Laurence Olivier Awards, two Helen Hayes Awards, the Charles MacArthur Award and the Edgar Award for Best Mystery of the Year. His plays include commissions from the Agatha Christie Estate, the Royal Shakespeare Co., The Old Globe Theatre and the Bristol Old Vic. His first play on Broadway, *Lend Me A Tenor*, won three Tony Awards and was nominated for nine. His best-known Broadway and West End shows include *Crazy for You* (five years on Broadway, Tony and Olivier Award Winner for Best Musical), *Moon Over Buffalo*, *Leading Ladies*, *Twentieth Century*, *The Adventures of Tom Sawyer*, *The Game's Afoot*, *The Fox on the Fairway*, *Midsummer/Jersey*, *The Three Musketeers*, *Treasure Island* and *The Beaux' Stratagem*. His plays starred Alec Baldwin, Carol Burnett, Lynn Redgrave, Mickey Rooney, Hal Holbrook, Dixie Carter, Tony Shalhoub, Anne Heche, Joan Collins and Kristin Bell. He is a McCarter Theatre/Sallie B. Goodman Fellow, and he has degrees from Harvard, Haverford College and Cambridge University. kenludwig.com



**M McNALLY
ROBINSON**

Recommended Reading

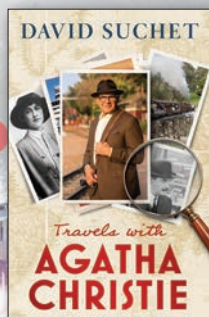
inspired by *Murder on the Orient Express*



Murder on the Orient Express
by Agatha Christie



**Agatha Christie:
A Very Elusive Woman**
by Lucy Worsley



Travels with Agatha Christie
by David Suchet



McNally Robinson Booksellers
1120 Grant Avenue • The Forks • mcnallyrobinson.com



**M McNALLY
ROBINSON**

WHEN YOU SUPPORT US, YOU SUPPORT OUR COMMUNITY

AGATHA CHRISTIE'S MURDER ON THE ORIENT EXPRESS



Kelly Thornton

Director

ROYAL MTC *Indecent, Beautiful: The Carole King Musical* (with Segal), *Sexual Misconduct of the Middle Classes, Into the Woods, Orlando, All is Bright, Bang Bang* (with Belfry).

OTHER THEATRE Eighteen years as Artistic Director of Nightwood Theatre – credits include *Unholy, The Penelopiad, Between the Sheets, The List, That Face, The Danish Play* (NAC, Aveny-Teatret, Copenhagen; Magnetic North); *Bear With Me, Mathilde and China Doll*. Elsewhere: *Vigil* (TiFT); *The Comedy of Errors* (CS); *This Hotel* (Passe Muraille); and nine seasons of Nightwood's Lawyer Show staging Shakespeare's comedies and Broadway musicals.

TEACHING Associate Director of the Directing Program at National Theatre School 2010-2013.

ET CETERA Kelly is Royal MTC's Artistic Director. She's been honoured with the Pauline McGibbon Award, the YWCA Woman of Distinction, a Harold Award, Dora and Evie Award nominations. She thanks her incredible family for their love and support.



Brian Perchaluk

Set Designer

ROYAL MTC Recent and favourites: *Waitress, The Recipe* (with TPM), *The Comeback, The Mountaintop, Clue* (with Grand), *Burning Mom, The Three Musketeers, The Color Purple* (with Citadel), *The Cottage, Sarah Ballenden,*

Black Coffee, Billy Elliot the Musical, Harvey, August: Osage County, Picasso at the Lapin Agile (with NAC), *M. Butterfly* (with NAC).

OTHER THEATRE Brian's work has been featured at theatres across the country, including two seasons each at the Shaw and Stratford festivals. Selected recent credits include: *La Cantatrice chauve et La Leçon* (Théâtre Cercle Molière); *The Hockey Sweater* and *The Little Mermaid* (Rainbow); *Liars at a Funeral* (PTE).

TRAINING Graduate of U of W and NTS.

ET CETERA Recipient of Gemini, Jessie Richardson, Prix Rideau and Evie Awards.



Joseph Abetria

Costume Designer

ROYAL MTC (selected) Costume Designer: *Life of Pi* (with Citadel), *Indecent, Little Women, The Play That Goes Wrong* (with Citadel/TC), *The Comeback, The Piano Teacher, Calpurnia* (with NAC/Black Theatre Workshop). Upcoming: *The Last Wife*.

OTHER THEATRE (selected) Costume Designer: *Prophecy, Mary's Wedding, Iceland* (TPM); *Charlie and the Chocolate Factory, Grand Ghost* (Grand); *Snow White, Spelling 2-5-5* (MTYP); *Volare, Space Girl, Voice* (PTE); *Plé* (Plé Collective presented by MTYP); *Women of the Fur Trade* (Vault Projects).

TRAINING University of Winnipeg.



Empowering
creative
young minds

Proudly supporting
Royal Manitoba Theatre Centre

Canada Life and design are trademarks
of The Canada Life Assurance Company.

canada  TM

AGATHA CHRISTIE'S MURDER ON THE ORIENT EXPRESS



Hugh Conacher
Lighting Designer

ROYAL MTC (selected) Lighting & Video Designer: *Elf - The Musical, The Lehman Trilogy, The Mountaintop, Vietgone, Venus in Fur*. Video Designer: *Network* (with Citadel). Lighting Designer: *King James, Indecent, Little Women, The Recipe* (with TPM), *among men* (with TPM), *Beautiful: The Carole King Musical* (with Segal), *The Secret to Good Tea, Into the Woods, New, Orlando, Women of the Fur Trade, Fun Home, The Color Purple* (with Citadel), *Kill Me Now* (with NAC), *Seminar* (with Mirvish), *Dry Lips Oughta Move to Kapuskasing* and many other productions since the '80s.

OTHER THEATRE Hugh collaborates with choreographers, visual artists and dance and theatre companies worldwide.

ET CETERA Hugh enjoys working beyond the constraints of traditional lighting design using various forms of interactive media, video and photography. His photographic work resides in private collections and has been published worldwide. Hugh is a member of the Associated Designers of Canada and L'Association des professionnels des arts de la scène du Québec. www.pellucid.me.



April Viczko
Associate Lighting Designer

ROYAL MTC *Life of Pi* (with Citadel).

OTHER THEATRE Lighting Design: *Skylight* (TC). Costume Design: *Blackbird, True Love Lies* (Citadel); *Slime* (The Only Animal/Banff Centre); *Butcher, The Circle, The Apology, Ash Rizin', Thinking of Yu, Drama:*

Pilot Episode (ATP); *Might As Well Be Dead, Murder on the Orient Express, Strangers on a Train, The Mousetrap, In the Heat of the Night* (Vertigo Theatre). Production Design: *Hello Hello, Romeo & Juliet* (Kill Your Television). Set and Costume Design: *As You Like It* (Citadel); *Bea's Niece* (Tarragon).

TRAINING/TEACHING April is the Chair of the Drama Department at the University of Alberta. She is a full member of Associated Designers of Canada/IATSE 659.

ET CETERA aprilviczko.com



Dave Clarke
Sound Designer

ROYAL MTC *Network* (with Citadel), *Cyrano de Bergerac, Henceforward* (with TC).

OTHER THEATRE *The Royale, The Mountaintop, The Tempest* (Citadel); *Little Shop of Horrors* (Citadel/Arts Club); *The Woman in Black* (Persephone); *Monstress* (Northern Light Theatre/Vertigo); *After Mourning* (Shadow Theatre).

FILM/TV Dave has created sound designs and original music for many film and television projects, including the feature films *Pleasant Street* and *The Pharmacist*, and the documentary *The Wounds Within*.

ET CETERA Dave has been nominated for and won numerous awards for Sound Design and Original Music. Dave is a child of Deaf adults - a CODA. His award-winning family musical about growing up with a Deaf mother - *Songs My Mother Never Sung Me* - premiered in Edmonton in 2019, and toured Canada in 2024.



Let us celebrate you.

Join the Founders' Circle today and your planned gift will ensure that Royal MTC will be a home for artists and arts lovers for generations.

We look forward to recognizing and celebrating your generosity, foresight, and commitment to Royal MTC's future starting today.

IF YOU HAVE ANY QUESTIONS, WE WOULD LOVE TO HEAR FROM YOU!

Contact Brendan at 204 954 6412 or bmckeen@royalmtc.ca



Bringing together the power of our people and philanthropy to help foster change, nurture progress, and support local communities.

Proud to support The Royal Manitoba Theatre Centre and the Pimootayowin Creators Circle.

Through the TD Ready Commitment, we're supporting organizations focused on increasing access to art and cultural events and activities and that work to create opportunities for people to participate in shared experiences that reflect the diversity of their community.

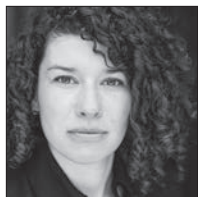
Learn more at td.com/artsandculture

**TD READY
COMMITMENT**

© The TD logo and other TD trademarks are the property of The Toronto-Dominion Bank or its subsidiaries.



AGATHA CHRISTIE'S MURDER ON THE ORIENT EXPRESS



Jacquie Loewen
Fight Director

ROYAL MTC Fight Director (selected): *Indecent, Waitress, The Recipe* (with TPM), *The Mountaintop, Clue* (with Grand), *Yaga, Into the Woods, The Rez Sisters, Roald Dahl's Matilda the Musical* (with Arts Club/Citadel), *Vietgone* (with fu-GEN/ Hope and Hell), *Hand to God, Private Lives, Gone With the Wind, August: Osage County, Romeo and Juliet, The Seafarer*. Actor: *The Three Musketeers, Alice Through the Looking-Glass, Top Girls*.

OTHER THEATRE Fight Director (selected): *Macbeth* (Bard on the Beach); Indigenous Playwrights New Works Workshop (PTC - Vancouver); *Beauty and the Beast* (Rainbow); *The Flood Thereafter* (CS); *Don Giovanni* (Manitoba Opera); *Macbeth, The Merry Wives of Windsor, The Taming of the Shrew* (SIR); *Prairie Nurse* (PTE).

TEACHING U of Winnipeg, U of Manitoba, Trinity Western, Simon Fraser University, Kansas State University.

ET CETERA Jacqueline was a founding member of the Canadian Comedy Award-nominated sketch group Hot Thespian Action.



Sharon Bajer
Intimacy Director

ROYAL MTC (selected) Actor: *Casey and Diana* (with TA), *Clue* (with Grand), *The Three Musketeers, Sense and Sensibility, Kill Me Now* (with NAC), *Hand to God, Late Company, The Seagull, A Christmas Story, August: Osage County, The Penelopiad, Top Girls, Steel Magnolias, Humble Boy, Of Mice and Men, Angels in America, Les Belles-Soeurs, Our Country's Good*. Intimacy Director: *The Piano Teacher, The Mountaintop, Clue* (with Grand), *Sexual Misconduct of the Middle Classes, Into the Woods, New*.

OTHER THEATRE *Afterlight* (The Keep/Rainbow); *The Outside Inn* (PTE); *The Wizard of Oz* (Rainbow).

TRAINING Studio 58, Michael Langham Directing Program (Stratford). Certified Intimacy Director (IDC).

FILM/TV Recent acting projects include a recurring role on the upcoming NETFLIX series *Little House on the Prairie*, the new horror flick *Silent Night, Deadly Night* and the upcoming Paramount curling movie *Sticks and Stones*.

ET CETERA Recipient of ACTRA National's 2025 Visionary Award and will be directing *Jesus Christ Superstar* at Rainbow Stage this summer! SHARONBAJER.CA



Enrich Your Experience!

Do you want to delve deeper into the themes of the play? For every show we release an enrichment guide with help from experts and educators. This guide offers background context, resources to explore and discussion questions to keep the conversation going. Read them at royalmtc.ca/enrichmentguides.



A STAR ALLIANCE MEMBER
MEMBRE DU RÉSEAU STAR ALLIANCE



Elevating arts and culture

Air Canada is a proud airline partner of the Royal Manitoba Theatre Centre. We soar together when we support arts and cultural institutions in the communities we serve.

#FlyTheFlag @aircanada

Élevons les arts et la culture

À titre de transporteur aérien, Air Canada est fière partenaire du Royal Manitoba Theatre Centre. En soutenant les institutions culturelles et artistiques dans les collectivités que nous desservons, nous les aidons à aller toujours plus haut, avec nous.

#HautLeDrapeau @aircanada



AIR CANADA

AGATHA CHRISTIE'S MURDER ON THE ORIENT EXPRESS



Jane Gooderham

Dialect Coach

ROYAL MTC *The Lehman Trilogy*.

OTHER THEATRE Stratford Festival (21 seasons); *My Name is Lucy Barton*, *The Lehman Trilogy*, *Fall On Your Knees*, *London Road* (CS); & *Juliet*, *Harry Potter and the Cursed Child*, *The Lord of the Rings* (Mirvish); *Infinite Life* (Coalmine); *War Horse*, *The Curious Incident of the Dog in the Night-Time* (RNT/Mirvish); *Matilda The Musical* (RSC/Mirvish); *Oroonoko*, *Chair* (Theatre for a New Audience, New York).

TV *Star Trek: Strange New Worlds* (Paramount); *Gwen Shamblin* (Lifetime); *Good Sam* (CBS); *Reacher* (Amazon); *Republic of Doyle* (CBC).

TRAINING/TEACHING Teaching: National Theatre School, Head of Voice; Birmingham Conservatory, Stratford Festival. Training: MA Voice, Royal Central School of Speech and Drama; Acting BA, Guildhall School of Music & Drama.



Ava Darrach-Gagnon

Assistant Director

ROYAL MTC Directing: 2024/25 National Mentorship Program. Performance: *Little Women*, *Sense and Sensibility*, *Unnecessary Farce*.

OTHER THEATRE Assistant Directing: *Blue Beads and Blueberries* (MTYP). Performance: *Serving Elizabeth* (PTE); *The Winter's Tale/Le conte d'hiver* (SIR/ Cercle Molière); *Come Wind Come Rain* (Free Theatre); *Joe Job* (Imaginary Productions).

FILM/TV Film: *Autumn at Apple Hill*, *Our Christmas Love Song*, *Journey Back to Christmas*, *Washed Away*. TV: *Acting Good*, *Burden of Truth*, *Escape or Die*. Stunt Performance: *The Long Walk*, *Silent Night Deadly Night*, *A House of Fire*.

TRAINING University of Winnipeg Acting: Honours.

ET CETERA Ava is a bilingual artist who has performed professionally in theatre and film for over 10 years. Alongside acting and stunt work, she is thrilled to continue her creative endeavours through the art of directing. "So happy to be riding this train with such a wonderful group of people. And the biggest thank you to all my people, who have been an incredible support on this artistic ride."



Katherine Hochman

Assistant Costume Designer

ROYAL MTC First engagement.

OTHER THEATRE Costume Designer: *This is Not Me* (Toronto Fringe Festival). Assistant Costume Designer: *Twelfth Night* (Stratford). Costume and Props Assistant: *The Goat* (Stratford). Costume and Props Designer: *Curse of The Windhollow* (Stage West Productions). Dresser: *Romeo and Juliet* (Dream in High Park); *Peter Pan*, *The Lion King*, *Moulin Rouge the Musical*, *TINA - The Tina Turner Musical* (Mirvish).

FILM/TV Costumes Apprentice: *Murdoch Mysteries* (CBC). Wardrobe Assistant: *Duck and Cover*.

TRAINING University of Guelph - Art History.

AGATHA CHRISTIE'S MURDER ON THE ORIENT EXPRESS

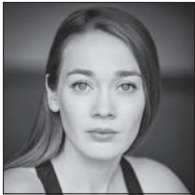


Katie Hoppa
Stage Manager

ROYAL MTC Stage Manager: *A Number*. Assistant Stage Manager: *Waitress*, *The Mountaintop*.

OTHER THEATRE Select recent credits: *Liars at a Funeral*, *Raised by Women*, *Year of Magical Thinking* (PTE); *Bad Parent* (PTE/vAct); *Frozen*, *Mary Poppins*, *The Little Mermaid*, *The Wizard of Oz*, *Cinderella* (Rainbow); *A Charlie Brown Double Bill* (MTYP); seven seasons of rain and sunshine with SIR.

ET CETERA Thanks to Kristjan, Rupert and Juniper for all their support this season and to Mike, Ali, Zahra and Dustyn, who I wouldn't have gotten here without.



Zahra Larche
Assistant Stage Manager

ROYAL MTC Stage Manager: *Indecent*, *The Recipe* (with TPM), *Sexual Misconduct of the Middle Classes*. Assistant Stage Manager: *Beautiful: The Carole King Musical* (with Segal), *The Sound of Music* (with Citadel), *Into the Woods*, *Network* (with Citadel), *Calpurnia* (with NAC/BTW), *Bang Bang* (with Belfry). Apprentice Stage Manager: *Buying the Farm* (tour), *Roald Dahl's Matilda The Musical*, *Vietgone* (with fu-GEN/Hope and Hell), *The Humans*. Assistant Production Manager (2017/18, 2020/21, 2021/22 seasons).

OTHER THEATRE Stage Manager: *Rock of Ages*, *Mary Poppins*, *The Hockey Sweater* (Rainbow); *Serving Elizabeth*, *The Outside Inn* (PTE). ASM: *Volare* (PTE).

Various credits with Dry Cold, Hudson Village Theatre, Manitoba Opera, Geordie Productions and A Company of Fools.

TRAINING Graduate of the National Theatre School of Canada – Production Program (2017).

ET CETERA Special thanks to my MTC family, my parents, Ilana, Jenna, Brooklynne, Liam and Paul!



Tia Morann
Apprentice Stage Manager

ROYAL MTC *Life of Pi*, *Indecent*.

OTHER THEATRE *Countess Ory*, *Rocking Horse Winner* (Manitoba Underground Opera); *Rock of Ages* (Rainbow); *La bohème*, *Carmen*, *Li Keur: Riel's Heart of the North*, *Così fan tutte* (MB Opera); *A Year with Frog and Toad* (MTYP); *The Cunning Little Vixen* (COC); *The Magic Flute* (Little Opera Company).

TRAINING B.A. in Theatre Production and Stage Management from University of Winnipeg.

ET CETERA Special thanks to all the family for their support! ●

EXPLORE MORE Agatha Christie's Murder on the Orient Express

EXPLORE MORE TRAINS

***The Railway Detective* by Edward Marston.** Explore 1850s London in book one of this historical mystery series featuring Detective Inspector Robert Colbeck. An audacious robbery of a mail train sets Colbeck on an action-packed adventure of murder, blackmail and destruction. FICTION MYST MARSTON

***Dread Journey* by Dorothy B. Hughes.**

A movie star begins to fear for her life during a train voyage between LA and Chicago when she begins to suspect that her producer is considering extreme measures to get her out of her contract and move on with a younger actress. FICTION MYST HUGHES

***Rail Journeys: From The Orient Express to the Japanese Bullet Train* by David Ross.**

Learn about some of the most remarkable and specular passenger rail journeys in the world in this photographic guide. 385.0222 ROSS 2022

EXPLORE MORE TWISTY WHODUNNITS

***Everyone in my Family has Killed Someone* by Benjamin Stevenson.** Get to know Earnie Cunningham, mystery fiction aficionado, as he narrates his family reunion celebrating the release of his brother from prison. When a body is found in the snow, Earnie suspects a Cunningham is behind it and tells us the story of his investigation in this self-aware mystery. FICTION MYST STEVENSON

***Magpie Murders* by Anthony Horowitz.**

Follow Susan Ryeland, editor, as she uncovers the connections between the death of Alan Conway, an unlikeable author of beloved crime books, and the

manuscript of his latest book. Alan died before sharing the last chapter with Susan, and figuring out the whodunnit of the manuscript might just reveal who killed Alan as well. FICTION MYST HOROWITZ

***Seven and a Half Deaths of Evelyn Hardcastle* by Stuart Turton.**

Groundhog Day meets Quantum Leap meets Agatha Christie in this mind-bending mystery. Each day Aiden Bishop wakes in the body of a different guest at Blackheath Manor, and each night Evelyn Hardcastle is murdered. With each loop Aiden learns more about the mystery of his own strange situation and the death of Evelyn Hardcastle. FICTION MYST TURTON

EXPLORE MORE AGATHA CHRISTIE

Death on the Nile. Join Poirot on another exciting case, this time on an idyllic cruise down the Nile River. Despite the charming setting, Poirot feels that something is dangerously amiss. FICTION MYST CHRISTIE ●



There are 1.4 million books, movies, audiobooks, eBooks, and more at the Winnipeg Public Library, and all you need to borrow them is your library card. There are 20 locations throughout the city, and there's an online catalogue for requesting items for pick-up at your library of convenience. An online e-Library has thousands of eBooks, eAudiobooks and more! All free to use with your library card. Visit us online at winnipeg.ca/library.

Embracing the
magic of live theatre,
and applauding the
joy it brings to our
community.

THE
Free Press

PROUD PARTNER OF ROYAL
MTC
MANITOBA THEATRE CENTRE



To subscribe call 204-697-7001
or visit winnipegfreepress.com/subscribe

A MAGNIFICENT JOURNEY



On Saturday, November 1, 450 guests joined us ON A MAGNIFICENT JOURNEY at the 2025 Black & White Ball in support of the Royal Manitoba Theatre Centre. Held at the Manitoba Museum's Alloway Hall, guests were welcomed into the world of Agatha Christie's *Murder on the Orient Express* by Royal MTC artists and emcees Justin Stadnyk and Donna Fletcher. Surrounded by art deco glamour, guests enjoyed an elegant meal, appearances by Hercule Poirot (Alex Poch Goldin) and Buddy the Elf (Ryan Brown) and danced into the early hours of the morning.

Royal MTC is grateful to all the guests, sponsors, corporate table purchasers, donors and volunteers for creating another unforgettable evening. Thank you for making this season possible!

Please join us at the Black & White Ball for a full evening of dining and dancing at the Manitoba Museum, in Alloway Hall on **Saturday, November 7, 2026**. Reserve your corporate table or individual tickets early so you don't miss the party of the year!

Thank you for joining us at the Black & White Ball! ●

Photos by Red Photo Co.



BLACK & WHITE BALL



2025 Black & White Ball Committee

VACATION RAFFLE

Fillmore Riley LLP

TRAVEL PARTNERS

Air Canada
Bonaventure Travel
TAUCK

AUCTION SPONSOR

The Tanchak Wealth Management
Group

LIVE AUCTION SPONSOR

Charity Auction Group

ENTERTAINMENT SPONSOR

Taylor McCaffrey LLP

DESSERT SPONSOR

PRA Inc.

COCKTAIL SPONSOR

Birchwood Lexus

SILVER SPONSORS

Global Drain Technologies
Westgate Enterprises Ltd.

WINE SPONSOR

Jones & Company Wine Merchants

BRONZE SPONSOR

The North West Company

SUPPORTERS

Beyond the Lounge
Collective Event Rentals
Creating A Scene
Dycom Direct Mail
Esdale Printing Company Ltd.
EventLight.ca
Flour & Flower
Manitoba Museum
McDiarmid Flowers
Planned Perfectly
POS Systems
Red Photo Co.
Relish Ideas
Soirée Event Planning
Winnipeg Free Press
WOW! Hospitality Concepts
6 Degrees Photobooth

PRIME TABLES

Gendis
Innovair Group
Penner Oil Inc.
People Corporation
Wellington-Altus
Whiteland Real Estate

CORPORATE TABLES

Canada Life
Cardinal Capital Management
CIBC Capital Markets
Deloitte
DentalCorp
Dycom Direct Mail Services
Manitoba Blue Cross

Manitoba Liquor & Lotteries
Number TEN Architecture
Parrish & Heimbecker
PCL Constructors Canada Inc.
Progressive Real Estate
Qualico
RRC Polytech
Richardson International Ltd.
Wawanesa

SPECIAL THANKS TO

Big City All Star Band
The Manitoba Museum
Our incredibly hardworking
volunteers and Royal MTC staff

COMMITTEE

Jenny-Lou Ryan - Co-Chair
Sharan Atwal - Co-Chair
Kaela Acheson
Kim Boughton
Antonio Buccini
Nicole Fay
Kathryn Gompf
Stacey Grocholski
Elsebeth Hansen-Kriening
Colleen Kroeker
Ryan Leech
Brad McCabe
Julie-Anne McCallum
Kirsten McConnell
Dana Plett
Rhonda Plett
Shelly Smith-Hines
Ellie Topnik



HOLLAND

Welcome To Holland

“Welcome to Holland” is a short essay written by Emily Perl Kingsley in 1987 about her experiences raising a son with Down syndrome. In the essay, she describes planning for a baby as “planning a fabulous vacation trip – to Italy.” When the plane lands, it is in Holland not Italy. Holland isn’t “a horrible, disgusting, filthy place, full of pestilence, famine and disease. It’s just a different place.” Emily Kingsley encourages the reader to appreciate the lovely things about Holland: the windmills, the tulips, the Rembrandts. Though she acknowledges the loss of watching everyone else take that planned trip to Italy, the essay ends encouraging acceptance: “But...if you spend your life mourning the fact that you didn’t get to Italy, you may never be free to enjoy the very special, the very lovely things...about Holland.” ●



To read the full essay, visit
[emilyperlkingsley.com/
welcome-to-holland](https://emilyperlkingsley.com/welcome-to-holland)

Barriers to Access

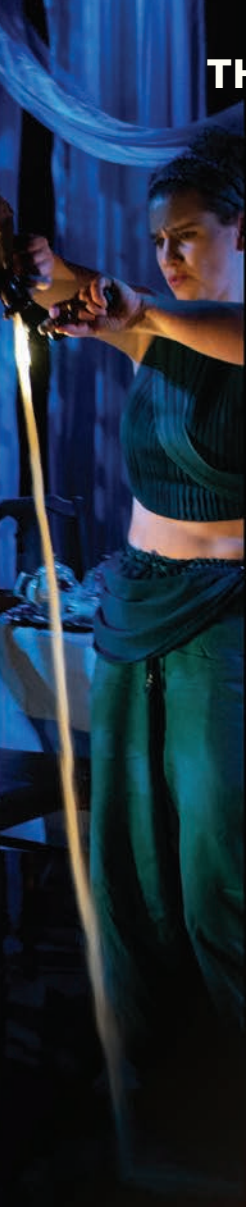
Holland may have windmills, tulips, and Rembrandts, but it also has systemic and wide-reaching challenges. The most frequent disability service-related challenges faced by parents and caregivers of disabled children in Manitoba are difficulties accessing services and having to navigate the complex disability system. Long waitlists, lack of transparency in language use and decision-making, and burdensome paperwork and documentation requirements all result in delays to access and service gaps.

Caring for a disabled child often reduces the feasibility of working for pay, particularly full-time work, resulting in lower overall income. One in five Canadian caregivers spends at least \$1,000 per month on out-of-pocket caregiving expenses. More than three in five caregivers in Manitoba and Saskatchewan have experienced some financial hardship due to caregiving, while only 12% receive financial support for the people they care for. In a 2020 survey of Manitoban caregivers of disabled children, only 39% of respondents received an amount of respite that met their family’s needs. ●

SOURCES: CANADIANCAREGIVING.ORG, MANITOBAADVOCATE.CA, SCIENCEDIRECT.COM

THEATRE PROJECTS MANITOBA

PROUD CO-PRODUCERS OF HOLLAND



**THEATRE PROJECTS
MANITOBA**

PROPHECY

BY JESSY ARDERN



THE RECIPE

BY ARMIN WIEBE



END OF THE LINE

BY WALK&TALK THEATRE COMPANY



AMONG MEN

BY DAVID YEE



PHONE: 204.989.2400 | EMAIL: boxoffice@theatreprojectsmanitoba.ca | WEBSITE: theatreprojectsmanitoba.ca



Conseil des arts
du Canada

Canada Council
for the Arts

GAIL ASPER
FAMILY FOUNDATION



Conseil des
arts du Manitoba



WINNIPEG
ARTS COUNCIL



WINNIPEG
FOUNDATION

The W.H. & S.E. Loewen
Foundation



RICHARDSON
FOUNDATION

Playwright's Notes

BY TRISH COOPER

I am so thrilled *Holland* has made its way onto the stage after a long development history. It was originally commissioned by Bob Metcalfe at Prairie Theatre Exchange many years ago after which it was workshopped at PTE with important dramaturgy by Rick Chafe. More work was done at PTE with encouragement from Thomas Morgan Jones and nurturing and guidance from Krista Jackson and the Manitoba Association of Playwrights.

Many brilliant and engaged artists were involved in shaping this play through workshops and conversations. Thank you so much to Ardith Boxall, Gordon Tanner, Ron Moore, Scott Montgomery, Tracy Penner, Alissa Watson, Hazel Venzon, RobYn Slade, Tom Keenan, Jen Lyon, Robb Paterson, Ray Strachan, Erin McGrath, Carolyn Gray and this wonderful cast and crew who I continue to learn from.

Suzie Martin, thank you for championing this play when it seemed too big and unruly, Kelly Thornton and everyone at Theatre Projects and Royal MTC, you are wonderful. Thanks to Debbie Patterson for your support and dramaturgy and I'm so grateful to Rae Gunn for ongoing advice about activism and living with a disability.

As you can read by this list of esteemed colleagues, I am a very lucky playwright. I've had support from the Manitoba Arts Council, Winnipeg Arts Council, and the Canada Council for the Arts.



This play was inspired after a series of extremely frustrating moments, writing letters, signing petitions, writing letters, making calls, writing letters, applying for funding and all the things you do as a parent when you have a child with a disability. Like the play, what started out as rage, frustration and a thirst for vengeance turned into gratitude for being in a community that cares. Our systems are broken but there are humans behind every desk, every call, every Individual Education Plan that care deeply and it's that community that helps us all to survive. We just need to build a better system...and maybe engage in more practical acts of vengeance.

If my parents could be here, they'd be obnoxiously proud, as proud as I am to be their daughter. My dad worked within the system to change it and my mom stood outside it with a bullhorn and they both, along with my sisters, constantly encouraged me to tell stories.

Thank you, Sam, for being the best partner and Isaac and Cooper for all your love and support and, of course, criticism and non-stop taunting. ●

Director's Notes

BY SUZIE MARTIN

This play first came across my desk three years ago when I was fresh on the job, and I immediately loved it. It's rare to see a new play that is a genuinely funny ensemble comedy, and the manic madcap world was giving me the vibe of George F Walker's East End plays but with a decidedly and deliciously Trish Cooper spin. I wanted to do it immediately but TPM is a little company, and we were just emerging from the pandemic with tight budgets and uncertain audiences, so I knew we'd need help to make it happen.

As I've been thinking about what to say about this play now, I keep coming back to what I know about Old Comedy—the ancient Greek form remembered most in the plays of Aristophanes like *Lysistrata*. Old Comedy served a civic function: to turn social and political evils on their ear and posit utopic and subversive alternatives that expanded people's imaginations of the possible. (What an amazing use for art!) The women in *Lysistrata* go on a sex strike to end a war—and they succeed!

Holland feels to me like it comes from that same impulse: it is vibrantly alive and feels socially important but also accessible and joyful—a revenge fantasy turned utopic revolution in the grand tradition of Aristophanes, where, like the women of *Lysistrata*, resourceful heroines taking comically extreme action can bring about practical social change.

Holland begins as a play about one woman taking a drastic action out of



desperation, but it becomes a play about community support and the proverbial village standing up together in the face of broken systems and seemingly insurmountable obstacles.

The provenance of this play is similar—as you'll see in Trish's note, it did indeed take a village of many artists and programmers to make this play happen. It was already well along its journey when it landed on my desk three years ago, and despite all the love I had for it, I couldn't do it alone.

This is a big show for the Warehouse and I'm so pleased that Kelly was game to swing big so that TPM and MTC could finally premiere this play that, as Trish notes, also wouldn't exist without the support of PTE, MAP and more than a dozen workshop artists.

Winnipeg's theatre community is a village I am so proud to be a part of, and every time you come to the theatre you join the village. Thanks for coming to witness and share this big, bold, and, dare I say, profoundly funny play. May it provoke you to wild imaginations for a better way forward!

Thank you! ●

PRESENTS

IN PARTNERSHIP WITH THEATRE PROJECTS MANITOBA

Holland

By Trish Cooper

February 5 – 21, 2026

PREVIEW February 4

Director Suzie Martin[†]
 Set Designer Ksenia Broda-Milian^{***}
 Costume Designer Daina Leitold^{**}
 Lighting Designer Anika Binding^{***}
 Lighting Design Mentor Hugh Conacher^{**}
 Composer & Sound Designer Daniel Roy
 Fight Director Jacquie Loewen
 Production & Accessibility Dramaturg Debbie Patterson
 Assistant Set Designer Joyce Licup^{***}
 Apprentice Director Samantha Machado^{*}
 Apprentice Sound Designer Tyler Sneesby[§]
 Stage Manager Margaret Brook
 Apprentice Stage Manager Devon Helm

THE CAST (IN ALPHABETICAL ORDER)

Carrie Jessy Ardern[†]
 Paul Daniel Bogart
 Rudy / Jim / Garry / Officer Miller Toby Hughes
 Alice Jennifer Lyon
 Rachel / Ms. Watson / Nurse / Officer Lafleur Jane Testar

Holland is performed with one intermission.

Trish Cooper is a member of the Playwrights Guild of Canada.

Holland was commissioned and developed by Bob Metcalfe at Prairie Theatre Exchange.

Holland was also supported by the Manitoba Arts Council, Canada Council for the Arts, Winnipeg Arts Council and Manitoba Association of Playwrights.

Special thanks: Artbeat Studio and Rae Gunn.

Production photography by Dylan Hewlett.

PRODUCTION SPONSOR

THE
ASPER
FOUNDATION

^{**}Indicated designers on this production are represented by the Associated Designers of Canada, IATSE Local ADC659.

^{*}Position funded through the Jean Murray - Moray Sinclair Theatre Apprenticeship Program [§]Position funded by TPM

[†]Past Jean Murray - Moray Sinclair apprenticeship or scholarship recipient

[†]Past Naomi Levin Theatre Scholarship award winner

HOLLAND



Jessy Ardern

Carrie

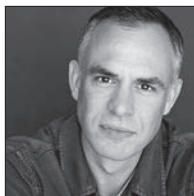
ROYAL MTC First appearance.

TPM Actor and Playwright: *Prophecy*.

OTHER THEATRE Actor: *Romeo and Juliet*, *Twelfth Night*, *The Tempest* (FreeWill Shakespeare Festival); *Mary of Shanty Bay* (Theatre by the Bay); *Brontë* (Studio Theatre); *Queen Lear is Dead* (The Fox Den Collective).

TRAINING Graduate of the University of Alberta's BFA Acting Program (2016).

ET CETERA Jessie is a playwright as well as a performer. This fall, you can see her adaptation of *Cyrano de Bergerac* on the Royal MTC Mainstage, as well as her immersive site-specific show *R&J: Closing Night* with Theatre Projects Manitoba and The Fox Den Collective. She sends lots of love to both of her families, and deepest gratitude to Beth and Itamar for looking after her through this process (and many others).



Daniel Bogart

Paul

ROYAL MTC *Elf - The Musical*.

TPM First appearance.

OTHER THEATRE *Les Misérables* (Broadway, National Tour); *Rock of Ages*, *Frozen*, *RENT* (Rainbow); *Guys and Dolls: In Concert* (WSO/Rainbow); *True West* (Theatre Raleigh); *The Ballad of Little Jo* (Steppenwolf Theatre Company); *Sweeney Todd* (Geva Theatre Center); *Phantom* (Music Theatre of Wichita); *Oklahoma!* (Paper Mill Playhouse). Assistant Director: *Les Misérables* (Maine State Music Theatre).

TV *The View* (ABC); *As the World Turns* (CBS); *Guiding Light* (CBS).

TRAINING B.F.A. from University of Cincinnati College-Conservatory of Music; M.S.Ed. from Bank Street Graduate School of Education.

ET CETERA Denver Post Ovation nomination for performance in *Les Misérables* (National Tour).

SYNOPSIS - Carrie and Paul need to clean the slate when it comes to their social worker, Alice. Seeking additional support for their son, the couple encounters more and more red tape as they navigate the approval process for added respite. Exhausted amidst increasing pressures in her day-to-day life, Carrie finally breaks when coverage for a potentially life-saving medication is denied. Taking matters into her own hands (literally) Carrie makes an outrageous decision, proving she will do anything to help her family - even when it all might have been for nothing. ●

HOLLAND



Toby Hughes

*Rudy / Jim / Garry /
Officer Miller*

ROYAL MTC *The Recipe* (with TPM), *Clue* (with Grand), *Yaga*, *All is Bright*, *Women of the Fur Trade*, *It's a Wonderful Life: The Radio Play*, *Nine Dragons* (with Gateway/Vertigo), *Sarah Ballenden*, *Hand to God*, *Alice Through the Looking-Glass*, *Shakespeare's Dog* (with NAC).

TPM *The Recipe* (with Royal MTC), *White Rabbit / Red Rabbit*.

OTHER THEATRE Selected: *Pauline Boutal, entre les toiles et les planches* (TCM); *The Golem's Mighty Swing*, *After Jerusalem* (WJT); *Chicago* (Pizza Party Prod.); *Mr. Burns: a Post-Electric Play* (District Theatre); *Outside Joke: The Improvised Musical*, *Outside Joke: Big Dickens Energy* (Outside Joke/PTE); *The Hound of the Baskervilles*, *The Valley*, *The Dishwashers* (PTE); *Le Jardin* (Cercle Molière); *The Winter's Tale/Le Conte d'Hiver* (SIR/Cercle Molière); *Henry IV*, *Henry V*, *Julius Caesar*, *The Comedy of Errors*, *Richard III*, *Antony and Cleopatra* (SIR); *The Snail and the Whale*, *The House at Pooh Corner*, *The Hobbit*, *Liars* (MTYP).

FILM/TV *Sniper: Rogue Mission*, *Tales from the Loop*, *Channel Zero*, *The Pinkertons*, *Todd and the Book of Pure Evil*.

TRAINING University of Winnipeg.

ET CETERA Toby is a performer / producer with musical improv collective *Outside Joke*.



Jennifer Lyon

Alice

ROYAL MTC *The Cottage*, *A Doll's House*, *It's a Wonderful Life: The Radio Play*, *Myth of the Ostrich*, *Billy Elliot*, *The Secret*

Annex, *A Christmas Story*, *The Penelopiad*, *Next to Normal*, *White Christmas*, *Pride and Prejudice*, *Guys and Dolls* (with TC/Citadel – Betty Mitchell nomination, best actress), *My Fair Lady*, *A Christmas Carol – The Musical*, *Steel Magnolias*.

TPM First appearance.

OTHER THEATRE Selected leading roles: *Jacques Brel* (PTE); *The Drowsy Chaperone* (Globe); *Spamalot* (Drayton); *Guys and Dolls* (TiFT); *The Road to Hell* (Persephone); *My Fair Lady* (Arts Club); *Skylight* (TNB); *Comet in Moominland* (MTYP/YPT/Montreal/Broadway); 19 shows at Rainbow Stage (Wall of Fame recipient); *Man of la Mancha*, *The Miracle Worker* (Stratford); *The Who's Tommy* (Mirvish/Toronto/Canadian Tour – Dora nomination, best actress).



Jane Testar

*Rachel /
Ms. Watson / Nurse /
Officer Lafleur*

ROYAL MTC *The Piano Teacher*, *Private Lives*.

TPM *None of This Is Happening*.

OTHER THEATRE *Outside Joke's Holiday Musical Extravaganza*, *Munschbustlers* (PTE); *The Winter's Tale* (SIR); *Que Faire d'Albert* (TCM/PTE); *Sunday in the Park with George* (Gallery Works).

TV *Le Monde de Gabrielle Roy* (ICI Télé); *Less Than Kind* (Citytv).

TRAINING Theatre Degree: Acting Honours, University of Winnipeg.

ET CETERA In memory of her dad, Brian Testar, Jane invites you to look into the Winnipeg-based organization: U-Turn Parkinson's. They do great work providing support and fitness classes for people living with Parkinson's disease.

Proud to support the **Royal Manitoba Theatre Centre** and its production of **HOLLAND**—a powerful story that reflects their mission to heal the human spirit.

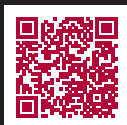
**THE ASPER FOUNDATION IS A
PHILANTHROPIC SUPPORTER
OF THE CULTURAL FABRIC OF
WINNIPEG.**

Nearly a hundred years ago, the families who built The Asper Foundation came to Canada searching for freedom and a better life. They brought with them a simple belief: when you succeed, you give back.

Since then, The Asper Foundation has woven itself into the heart of Winnipeg's culture — not just by funding performances or venues, but by creating moments that matter. Moments of belonging: pride, and shared joy.

It's about creating spaces where Winnipeggers can gather, reflect on their roots, and celebrate the stories and art that shape us. At its core, it's about strengthening the ties that make our community feel like home.

THE
ASPER
FOUNDATION



EAT - EXPERIENCE - EXPLORE

Plan your
next trip to
New Zealand



**BON
ADVENTURE**
TRAVEL

bonaventuretravel.ca

204-488-6653

428 Academy Road,
Winnipeg, MB R3N 0C3





Trish Cooper
Playwright

ROYAL MTC Playwright: *The Comeback*.
Director: *Mix Tapes From My Mom* (Regional
Tour/Warehouse). Actor: *The Myth of the*
Ostrich, Miracle on South Division Street.

TPM *In the Chamber*.

OTHER THEATRE Trish is an actor and
playwright (*Social Studies* at PTE, *The*
Centaur, Firehall) and many Fringe shows,
including with the sketch comedy troupe
the Royal Liechtenstein Theatre Company.

TRAINING Honours Theatre Degree
University of Winnipeg.

ET CETERA Big love to Gerri, Jill, Geoff,
Sam, Mau, Val, Sam, Cooper and Isaac.



Suzie Martin
Director

ROYAL MTC Director: *among men* (with
TPM). Apprentice Director: *Shakespeare*
in Love (with Citadel). Apprentice Stage
Manager: *Hirsch*.

TPM *Prophecy; among men* (with Royal MTC).

OTHER THEATRE Selected Directing: *Oh*
The Humanity! (U of W); *God's Ear; Revolt.*
She Said. Revolt Again. (U of A Studio
Theatre); *Baba Yaga* (Alberta Musical
Theatre Co.); *Tragedy: A Tragedy* (Blarney
Productions); *A Midsummer Night's Dream*
(Citadel Young Co.); *Over Her Dead Body*
(Small Matters/Fringe Theatre Adventures);
Suor Angelica, Gianni Schicchi (Manitoba
Underground Opera); *The Cherry Orchard*
(TBTR/little ECHO theatre).

TRAINING/TEACHING Suzie holds an MFA
in Directing and a teaching award from
the University of Alberta and is a graduate
of the University of Winnipeg Dept of
Theatre & Film.

ET CETERA Suzie is the Artistic Director
of Theatre Projects Manitoba, check out
all cool things TPM is up to at
theatreprojectsmanitoba.ca.



Ksenia Broda-Milian
Set Designer

ROYAL MTC Lighting Designer: *A Number*.
Costume Designer: *King James, Yaga*.

Assistant Designer: *As You Like It,*
Matilda the Musical. Design Apprentice:
The Seagull, Cabaret, Sherlock Holmes.
2020/21 National Mentorship Program.
Design team member for MTC/MBA
Lawyers Plays: *Mamma Mia!, Urinetown*.

TPM Lighting Designer: *None of this is*
Happening.

OTHER THEATRE Selected recent set,
costume and/or lighting designs: *Gather,*
The Velveteen Rabbit (MTYP); *Rock of*
Ages, Breaking Up, Cash (Rainbow); *The*
Band's Visit, Address Unknown (WJT);
Yaga (Belfry); *Much Ado* (SIR); *Katharsis*
(PTE); *It's a Wonderful Life* (Magnus).

TRAINING/TEACHING Training: U of W
(BAH), U of Alberta (MFA), Pratt Institute,
Banff Centre. Teaching: Creative Manitoba,
U of W, Musical Stage, MTYP, Theatre
Alberta.

ET CETERA Ksenia is Royal MTC's
Education and Enrichment Manager, a
Rick Hansen Foundation Accessibility
Certification Professional, audio describer
and ADC659 member. Grateful for support
of my parents and friends (love you!).
Thrilled to be working with Suzie again in
our home province! broda-milian.com

Great theatre lives here.



Photo by Jerry Grajewski

BMO



We are pleased to support the **Royal Manitoba Theatre Centre** and the artists who have been captivating audiences with exciting, innovative, and entertaining productions.

BMO is proud to be the **2025/26 Tom Hendry Warehouse Season Sponsor**.



Daina Leitold
Costume Designer

ROYAL MTC Costume Design: *A Number, Waitress, The Recipe* (with TPM), *among men* (with TPM). Set Design: *Mix Tapes From My Mom*. Upcoming: *Hockey Mom Hockey Dad* (Set and Costumes).

TPM Costume Designer: *The Recipe* (with Royal MTC), *among men* (with Royal MTC), *End of the Line* (with Walk & Talk). Set & Costume Designer: *Red Earth* (with One Trunk).

OTHER THEATRE (selected) Costume Design: *Rock of Ages*, *Rent* (Rainbow); *Twelfth Night* (SIR); *Narrow Bridge*, *Bar Mitzvah Boy* (WJT). Set Design: *Raised by Women*, *Year of Magical Thinking* (PTE); *The Dark Lady* (SIR); *PLÉ* (Plé Collective/MTYP). Set, Prop and Costume Design: *Glad to Be Here*, *Meet Me at Dawn*, *Edward II*, *Cock, Bull* (TBTR); *Hamlet*, *Timon of Athens* (SIR).

ET CETERA SATA Nomination for Production Excellence (*The Dark Lady*); Evie Award for Outstanding Design (*Red Earth*).



Anika Binding
Lighting Designer

ROYAL MTC Assistant Set Designer: *Murder for Two*. Assistant Lighting Designer: *Little Women*, *The Recipe* (with TPM), *among men* (with TPM). Apprentice Lighting & Video Designer: *The Lehman Trilogy*. Apprentice Lighting Designer: *The Mountaintop*.

TPM Lighting Designer: *Prophecy*. Assistant Lighting Designer: *The Recipe* (with Royal MTC), *among men* (with Royal MTC).

OTHER THEATRE Production Design: *Afterlight* (The Keep). Lighting Design: *Croquis* (Winnipeg's Contemporary Dancers); *Women of the Fur Trade* (Magnus). Costume Design: *Every Christmas Story Ever Told*, *Liars at a Funeral* (Magnus); *Macbeth*, *Waiting for Godot* (SIR). Lighting & Costume Design: *Miss Shakespeare* (WST). Costumes & Set Associate Design: *Serving Elizabeth* (PTE).

TRAINING BA Hons. in Theatre and Film from the University of Winnipeg, with specializations in Design, Stage Management & Production, and Directing.

ET CETERA Anika would like to thank her friends, family and mentors for their endless support.



Daniel Roy
Composer & Sound Designer

ROYAL MTC Sound Designer: *The Comeback*, *The Three Musketeers*, *The Rez Sisters*, *Women of the Fur Trade*. Performer: *All is Bright*.

TPM First engagement.

OTHER THEATRE Sound Designer: *Théâtre sans animaux*, *Le boucher*, *Plus (+) que toi* (TCM); *The Flats*, *What To Do With Albert* (PTE/TCM); *Flesh + Machine* (Winnipeg's Contemporary Dancers); *PLÉ* (MTYP); *Le ciel est bleu comme une orange* (TCM/EMC Shemsy, Morocco).

FILM/TV Voice Actor: *Supa Strikas*, *Canot Cocasse*, *Wolf Joe*, *La Brigade*, *Chums*.

TRAINING Beauty school dropout; as a musician, mostly a mix of self-taught and private lessons.

ET CETERA Multi-instrumentalist, composer and award-winning singer-songwriter, Daniel Roy has been contributing to Manitoba's artistic community for three decades. His skill and versatility allow him

to work across all genres of music. He divides his time between performing and recording with different artists, album production, artistic direction, and sound design for theatre and television.



Jacquie Loewen
Fight Director

ROYAL MTC Fight Director (selected): *Indecent, Waitress, The Recipe* (with TPM), *The Mountaintop, Clue* (with Grand), *Yaga, Into the Woods, The Rez Sisters, Roald Dahl's Matilda the Musical* (with Arts Club/Citadel), *Vietgone* (with fu-GEN/ Hope and Hell), *Hand to God, Private Lives, Gone With the Wind, August: Osage County, Romeo and Juliet, The Seafarer*. Actor: *The Three Musketeers, Alice Through the Looking-Glass, Top Girls*.

TPM Fight Director: *The Recipe* (with Royal MTC). Director/co-creator: *In Time*.

OTHER THEATRE Fight Director (selected): *Macbeth* (Bard on the Beach); Indigenous Playwrights New Works Workshop (PTC - Vancouver); *Beauty and the Beast* (Rainbow); *The Flood Thereafter* (CS); *Don Giovanni* (Manitoba Opera); *Macbeth, The Merry Wives of Windsor, The Taming of the Shrew* (SIR); *Prairie Nurse* (PTE).

TEACHING U of Winnipeg, U of Manitoba, Trinity Western, Simon Fraser University, Kansas State University.

ET CETERA Jacqueline was a founding member of the Canadian Comedy Award-nominated sketch group Hot Thespian Action.



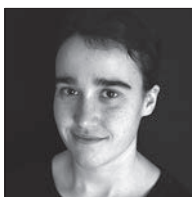
Joyce Licup
Assistant Set Designer

ROYAL MTC Assistant Set Designer: among men (with TPM), *Burning Mom*. Apprentice Set Designer: *Tiny Plays, Big Ideas*.

TPM Assistant Set Designer: among men (with Royal MTC). Set Designer: *None of This is Happening*.

OTHER THEATRE Set & Props Designer: *Munsch Upon A Time* (PTE); *Blue Beads and Blueberries* (MTYP). Apprentice Set Designer: *Ma-Buhay! A New Musical* (Rainbow). Set Designer: *Bastard* (Out From Under the Rug).

TRAINING Graduate of The University of Winnipeg with a BA in Theatre: Design.



Samantha Machado
Apprentice Director

ROYAL MTC First engagement.

TPM First engagement.

OTHER THEATRE Assistant Director: *Ponderosa Pine* (PTE). Director: *Him, Taming of the Shrew* (King's Theatrical Society).

ET CETERA Samantha was the Grand Prize winner of the 2024 Scripts on Fire New Play Competition for *The Incomplete English Dictionary of Lexical Gaps*.



Tyler Sneesby
*Apprentice Sound
Designer*

ROYAL MTC First engagement.

TPM First engagement.

ET CETERA 2026 marks 35 years Tyler Sneesby has been producing and performing music. As a DJ, he has been a fixture on the local dance party scene for decades and has recorded on dozens of albums including most of the releases from Peanuts & Corn Records, the acclaimed independent hip-hop label he cofounded in 1994. His work behind the turn tables also provided his first foray into theatre, performing as the musical accompanist for the internationally, renowned improv duo Crumbs. Since being diagnosed with multiple sclerosis in 2015 and subsequently losing his vision, Tyler has become more and more involved in the disability community and has performed as an actor on stage with Sick + Twisted Theatre. Always looking to grow as an artist, Tyler is grateful to Theatre Projects Manitoba and Royal MTC for the opportunity to learn the craft of sound design and to collaborate with so many talented creators.



Margaret Brook
Stage Manager

ROYAL MTC *Mix Tapes From My Mom, The Piano Teacher, Burning Mom, Women of the Fur Trade, John, It's a Wonderful Life: The Radio Play, The Humans, Outside Mullingar, Million Dollar Quartet, Unnecessary Farce, The Devil's Music, The Glass Menagerie, The Penelopiad, The Fighting Days, The 39 Steps, The Syringa Tree* and more.

TPM *Prophecy.*

OTHER THEATRE *Escaped Alone* (Full of Days Collective); *Awaken* (SIR/zone41). Other theatres include PTE, Manitoba Opera, MTYP and Royal MTC co-productions with the Citadel, Theatre Calgary, Vancouver Playhouse, Royal Alex, Saidye Bronfman.



Devon Helm
*Apprentice Stage
Manager*

ROYAL MTC Apprentice Stage Manager: *Waitress, The Recipe* (with TPM), *The Piano Teacher, Trouble in Mind*. Assistant Stage Manager: *The Man Who Came to Dinner* (2025 Lawyers Play). Child Supervisor: *The Comeback, The Sound of Music*.

TPM Apprentice Stage Manager: *The Recipe* (with Royal MTC). Stage Manager: *Climate & Main*.

OTHER THEATRE *Tosca, La Bohème* (Apprentice Stage Manager - Manitoba Opera); *Disney's Frozen* (Child Supervisor - Rainbow); *The River, Pool (No Water)* (Stage Manager - Winnipeg Fringe Festival). For U of W (selected): *365 Days/365 Plays, Alunsina's Love* (Stage Manager), *Love of the Nightingale, Love's Labour's Lost* (Assistant Stage Manager), *Everybody* (Set Designer). *FAME the Musical* (Design Mentee - WST).

TRAINING University of Winnipeg Bachelor of Arts - Stage Management & Production. SMArts Conference 2023.

ET CETERA All my love to my family and friends!

HOLLAND

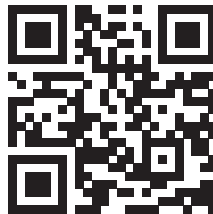
Artbeat Studio – *Prop Artwork Creations* – Artbeat Studio Inc. is a registered not-for-profit charity dedicated to supporting individuals living with mental health challenges through recovery, empowerment, and creative expression. They provide welcoming studio and gallery spaces, mentorship, and social supports, fostering unique, community-based, self-directed, and peer-supported environments. These programs actively combat stigma and poverty through education, advocacy, and positive action. The Artists-in-Residence program guides artists in managing their workspace, producing and marketing work, and advancing techniques while receiving mentorship and support. Upon completing the program, alumni can sell work through Artbeat's social enterprise, Upbeat Artworks, where they also manage the store, teach workshops, demonstrate techniques, and engage with the community. With facilitation by James Dixon, Artbeat alumni created pieces "by" the character Alice featured onstage. Learn more at artbeatstudio.ca.

The Asper Foundation – *Production Sponsor* – Israel Asper, O.C., O.M., Q.C., L.L.D. (1932–2003) and Babs Asper (1933–2011) believed that philanthropy is a driving force behind positive change in people's quality of life. For this reason, they formed The Asper Foundation in Winnipeg in 1983 to build upon the Asper family's philanthropic objectives. Inspired by a deep commitment to impactful philanthropy, the Foundation develops major projects and provides support to the Jewish Community and broader community in areas of culture, education, community development, and human rights on a local, national and international scale. In particular, the Foundation strives to improve the quality of life in Winnipeg, therefore much of the focus of this philanthropy is directed to the general Winnipeg community. ●

**SIGN UP AND CHOOSE
YOUR WELCOME
OFFER UP TO \$250***

Visit PlayNow.com/mb/register or scan the QR code for details. Offer expires March 31, 2026.

*Conditions apply.



**CASINO
SPORTS
LOTTERY**

18+ | ENJOY
RESPONSIBLY



EXPLORE MORE **Holland**

EXPLORE MORE DISABILITY STORIES

***I Don't Do Disability and Other Lies I've Told Myself* by Adelle Purdham.**

The complicated emotions of a parent are revealed in this candid collection of essays. Upon the arrival of her daughter with Down syndrome, Purdham began unpacking a lifetime of her own ableism and reflecting on what it means for people with disabilities to be truly seen. **618.928588 PURDHAM 2024**

***True Biz* by Sara Novic.** Be immersed in this coming-of-age book featuring students at a deaf high school as they navigate the drama of their teenage lives while also navigating sign language, lip-reading, cochlear implants, civil rights, and justice. A brilliant journey into the Deaf community and a universal celebration of human connection. **FICTION NOVIC**

***Brittle Joints* by Maria Sweeney.** This evocative graphic memoir by disabled illustrator and author Maria Sweeney depicts the challenges of living with a progressive disability. Born with a rare condition that made her bones exceptionally brittle, Sweeney describes the struggle to obtain care and navigate an inaccessible world, but also where she has found community, beauty, and growth. **GRAPHIC B SWEENEY 2024**

***Interabled: True Stories About Love and Disability* by Hannah Burcaw and Shane Burcaw.** Learn the intimate stories of interabled couples in this collection of stories. Sometimes tear-jerking, sometimes hilarious, this heart-warming collection offers a glimpse into love stories which are rarely in the spotlight. **362.4 BURCAW 2025**

EXPLORE MORE DISABILITY RIGHTS

***Beautiful People: My Thirteen Truths About Disability* by Melissa Blake.** Join disability activist and social media influencer Melissa Blake in this illuminating memoir and call to action. Harassed online after she wrote an op-ed for CNN Opinion, Blake's refusal to be cowed by her bullies went viral and received widespread media coverage. In this book Blake shares her truths about disability and highlights heroes of the disability rights movement in America. **362.4092 BLAKE 2024**

***Disability Rights* by Deborah Stienstra.** Get up to speed on disability rights in Canada. This book offers an overview of both the historical and current experiences of people with disabilities in Canada, including new practices that can create a more inclusive and accommodating society for everyone. **362.40971 STIENSTRA 2020 ●**



There are 1.4 million books, movies, audiobooks, eBooks, and more at the Winnipeg Public Library, and all you need to borrow them is your library card. There are 20 locations throughout the city, and there's an online catalogue for requesting items for pick-up at your library of convenience. An online e-Library has thousands of eBooks, eAudiobooks and more! All free to use with your library card. Visit us online at winnipeg.ca/library.



**We're proud to
support Royal MTC's
deep commitment to
bringing Manitobans
exhilarating theatre.**

FillmoreRiley

FillmoreRiley.com

Fillmore Riley LLP

Lawyers and Trademark Agents

Available in the
THEATRE
and
served at
Torque taproom,
restaurants
and Liquor Marts.

TORQUE BREWING

CRAFTING TRUST IN EVERY BREW.



Jones & Company
— WINE MERCHANTS —



Shop Local, Globally.

1616 St. Mary's Road Winnipeg, Manitoba
204.948.WINE (9463) | Text a Somm: 204.400.0499
joneswines.com | wine@joneswines.com

SUPPORTERS

Many thanks to our donors
who made a gift between
Oct 1, 2024 and Dec 5, 2025

DIRECTOR'S CIRCLE

\$10,000+

Gail Asper, OC, OM, LLD* &
Michael Paterson
Zita & Mark Bernstein Family
Foundation
Linda McGarva-Cohen & James
Cohen, OM
The Mayor's Gala - Support for the
Arts - The Winnipeg Foundation
Shirley Anne Richardson Annual
Giving Trust Fund - The Winnipeg
Foundation
Todd & Kellie Tanchak
Dr. Marcel Van Woensel
Anonymous

\$6,500-9,999

Houston Family of Bradwardine
Fund - The Winnipeg Foundation
June & Bob Jackson Memorial Fund
for the Performing Arts - The
Winnipeg Foundation
Diane & Dave Johnston
Ted & Ruth Northam
Dr. H. Nyhof & Ms. Jo-Anne Lutz
Polar Foundation
Mr. Leslie Taylor

\$4,000-6,499

Pauline A. Braun
David Christianson & Vera
Steinberger
Gail Corne
D. J. Cowan
Karen & Alan Dalkie
Neil & Carol Duboff
Susan Glass & Arni Thorsteinson
Evan Klassen* & Bert Keeper*
Elizabeth Marr & Nick, David &
Allison Slonosky
Leigh Murphy - in memory of Liam
Murphy*
Gerry & Barb Price
Hartley & Heather Richardson
James & Janice Tennant
Dr. & Mrs. James & Kim Zacharias

\$2,000-3,999

Dr. J Baluta & Ms. O. Kandia
Lorraine Beck Craig McIntosh
Todd Bourcier
H. F. Bowen
Emily Burt*

David & Lianne Carefoot
David* & Barb Christie
Heather Clarke
Gerry* & Chris Couture
Kerry Dangerfield**
Dr. Corinne Barrett DeWiele &
Mr. V. Michael DeWiele
Ben & Shari Diamond
Dr. Lawrence & Ms. Brenda Ellerby
Tony* & Jennifer Fletcher*
Margaret Groome
Linda Hamilton & Grange Morrow*
Sharon Hamilton*
Dr. P. Kmet & Mr. B. Roslycky
Donna & Dave* Lalama
Katrina Lee-Kwen & Jeff Neufeld
Drs. Bill Pope & Elizabeth Tippet Pope
Fund - The Winnipeg Foundation
Sanford & Deborah Riley
Bill & Laurie* Speers
Mait & Pat Sundmark
Kelly Thornton* & Josep
Seras-Gubert*
Helga Van Iderstine
Anonymous

\$1,200-1,999

Doneta Broatchie, CM* & Harry
Broatchie*
Haddera & Mark Chisick
The Circle Foundation
Hugh Conacher*
Pam & Andrew Cooke
Philip Corrin
Corinne Ratuski & Brad Favel*
Sylvia Flam*
Katherine Fox**
Susan* & Ab Freig*
John* & Nicola Guttormson*
Ahava Halpern & Frank Lavitt*
Barbara Hamilton
Gregg & Mary Hanson
Vivian Hilder-Skwark & David Skwark
- in memory of Mike Skwark*
Colleen Hrabitt* & Curtis Brown
Shawn Hughes & Bruno Koehn*
Katie Inverarity
Lisa Johnston
Hon. William Johnston
Michelle Kaschl
Serena Helen Kraayeveld
David* & Ellen Kroft*
J. Lamothe*
Rick Lee & Laurie Shapiro
Peter & Karen Leipsic
Logan Family Fund - Nick Logan &
Christine Skene
Reginald & Judy Low
Mark & Gloria Mancini*
Gerard Matte & Lydia Surasky-Matte
Jim* & Penny McLandress*
Melissa Novecosky

Wayne & Linda Paquin
Jean-Pierre Parenty & Michelle Smith
Donna Plant
Frances Pollard
K. Heather Power & Harold Klause*
Jocelyne Prefontaine**
Priority Restoration
Lawrence Prout* & Lisa Gardewine*
Margaret Redmond* & Greg Gillis*
Nancy & Loren* Remillard
R. S. Cunha Dental Corp*
Sudhir Sandhu**
Ken & Susan* Skinner*
Donald Smith*
Kevin Hines & Shelly Smith-Hines*
Joan Stephens - in memory of
Annice Stephens*
Jodee Stewart
Sasha & Josh Thiem*
Geeta* & Michael Tucker*
Murray & Nancy Wiegand
Rick & Claire* Workman
Nicole Zajac**
3 Anonymous

COMPANY CIRCLE

\$600-1,199

Robert & Ina Abra Family Fund -
The Winnipeg Foundation
Jennifer & Scott Ash
Ryan Bernier
Jennifer Blumenthal & Daniel Bubis
Brenlee Carrington Trepel KC &
Brent Trepel
Gertie Chipka
Aynsley & Grant Cockshott
Jim & Gwen Court
J. Davidson*
H. Dyck
Neil & Sherry Fast
Pamela & Kevin Friesen
Felicia & Trevor Frost
Brad & Jenn Gesell
Jean* CM & Dennis Giguere
Kirby Gompf
The Art Maister & Kayla Gordon
Foundation
Heather & Paul Grower
Charles Henaire
Rodney Hick & Tracey Jackson
N & L Holliday
Sylvia Jansen
Kathy & Scott Jocelyn
Katherine Clements & James Tam
Peter Kingsley, KC*
Donna Korban & Family
Hester Kroft
John & Heather Lea
Shirley Liba

*Current Royal MTC Board of Trustees/Advisory Board members

**Current Royal MTC staff

*Monthly Donors/Drama Club

SUPPORTERS

Linda & Ray Loewen
Teresa Lopata & Bruce Waggy
Brian & Christie Lysack*
Garry Markham
Carol & Barry^s McArton
Terri & Jim McKerchar*
Ron McKinnon^s & Peggy Barker*
Carolyn Garlich & Peter Miller Gift Fund
Colleen Munro
Marika Nerbas
Tracey Novak
Ivan & Cathy Oresnik*
Cam & Carole Osler
Pierre Ouellet
Judith Parker*
Helene Poirier & Ian Gillies
Iris Reimer
David & Joan Rew
Henriette Ricou & Jure Manfreda
Jean Riggall*
Barbara Scheuneman
Tyler Shingoose
Shayna & Merrill Shulman
Marc & Debby Simard
Carol & Ron Slater Fund - Jewish Foundation of Manitoba
Rick & Michelle Soenen
Deborah Spracklin
Doug Stephen
Leah R. Janzen & Ian R. Thomson
Dr. Peter Triggs*
Vicki Verville*
Grant & Trish Wainikka
Jerry & Karen Wake
Faye Warren
Kathleen Gough & Tim Wildman
Dr. Dorothy Y. Young
Anonymus*
5 Anonymous

\$250-599

Pat & Darrell Adams*
Dr. Elizabeth Adkins
Bob Adkins - in memory of Nancy
Glen Agar & Pam Reimer
Dawn Andersen
Jay & Judy Anderson
Abe Anhang
Craig & Sue Mackenzie
Elizabeth B. Armytage Fund
- The Winnipeg Foundation
Dennis & Elaine Schultz
Peter Attwood
Brenna Bacchus*
Peter Bagot
Zaz Bajon & Patricia Hunter
Olga & Ivan Banias
Earl & Cheryl Barish
Dianne J. Beaven
Larry Beeston & Anna Sikora
Holly Beirnes-Burt

George & Susan Benias
Terri & Morley Bernstein
Bruce & Joyce Berry
Chris Bishop
Marc Bissonnette
Helga & Gerhard Bock
Bockstael Construction Ltd
Lilian Bonin & Daniel P Levin
John & Marilyn Bourbonnais
Ron Boyd*
M. Braid
Kris & Ruth Breckman
Billy Brodovsky & Libby Yager*
Brian Brown
Ellen & George Bruce
Donna Byrne
Colleen Cariou & Ron Maier
Arlene Carr
Cheryl Chaban
Rosemary Chapman
Roberta Christianson
Nancy Chuback
Ken Clark & Pamela Lockman
Agnes Collins
Joy Cooper & Martin Reed
Connor Coughlin
Robert Coutts*
Drs. Kristen Creek & Josh Manusow
Margaret Cuddy
Bradley J. Curran
Matthew Cutler & Dr. Avery Miller
J. Dale
Verna Danylchuk
Ms. D. Davidson
Doug De Graff
Andre & Diane de Rocquigny
Patrick Dewarle
Rita Dornn
Michael Duncan
Craig & Claudette Dunn
Helene Dyck
Glen* & Joan Dyrda
Michael Easton
Gail Eckert
Greg Edmond & Irene
Groot-Koerkamp
Ken & Lesley Enns
Fran Falzarano
Kate Hodgert-Fennell*
Pat & Doug Finkbeiner
Gayle Fischer
Maureen Flaherty & Fred Beckwith
Andrea Forbes-Avila*
Adrian Frost & Kerra Mruss
Paul Daeninck & Monica Furer
Colleen & Dan Furlan*
Daniel Gagnon
Joel Gagnon
Helen Garrod
Lynne & Lindsay Gauld*
Heather Gillander
Jan Gordon*

Jeremy & Maureen Gordon
L. Graham
M. Gray
Harry & Cheryl Green
Sig & Leona Hackbart
Noella & Patrick* Hanan*
Doug & Sylvia Hannah
Brian & Dawn Hanson - in memory of our Daughter, Kristin Dawn Hanson
Barbara Harrison
Kathryn & Wayne Harrison
Shaun & Gillian Hauser
Chris Hayduk
Frank & Sue Hechter*
Ryan Henderson
Kyle Hendin & Breanne Korban
Marilyn Hendzel*
Patricia & Robert Hill
Judith & Eric Hinton
Ted & Cathy Hlynsky
Rob & Jen Hochkiewicz*
Kate Holden
Ken Houssin*, FCA
Duraïd Ibrahim
Dan & Karen Ilchyna
G. C. Irwin-Kilfoyle
C & C Isaak
Tom & Laura Jelic
Lynne Jentsch
Gerald Jewers
Dave & Lesia Johns
Tiffany Johnson-Sheldon
Kathy Kalinowsky
Joanne & Rod Kamins
L. Kampeas
Kandla Family
Sherry Kaniuga*
Sheryl Kapit & Aaron London*
Joel & Danna Kaplan
Sandy & Joan Kellett
Joan Kennedy
Robert Kennedy & Claudette Leclerc
James & Nicole Kepp
Kesslering Forsythe Family Fund
Betty Klassen
Richard & Karin Klassen
Julie Ann Kniskern
Denise & David Koss
Janice & Richard Kostelnky
Carol Campbell & Andy Krentz
Andre & Elsebeth Kriening
Randie & Jan Kushnier
Laurie Lam & Larry Desrochers
Desiree Lavallee**
Bob Leggett
Richard Leipsic & Kerrie Halprin
Curt Letkeman
Tim Preston - in memory of Dave Ling
Charles & Diane Littman
Paul & Mary Loewen
Robert & Diana Logan
Laura Lomow

*Current Royal MTC Board of Trustees/Advisory Board members *Current Royal MTC staff *Monthly Donors/Drama Club ^sFondly Remembered

SUPPORTERS

Pat & Jim Ludwig
 Carole Lupkowski
 Tom Lussier
 MacDonald/Cageorge Fund
 - The Winnipeg Foundation
 Jim MacGregor & Christine Halma
 Roger Maguet
 Russ & Sherri Malkoske
 Judith Manning
 Mark & Mariza Mariano
 Cheryl & Eric Matheson
 Nancy & David MacAngus
 J. McCallum
 Jim & Lynne McClelland
 Campbell & Lorraine McIntyre
 Dr. Marlene & Ian McKay
 Colleen McKenty
 Greg & Gloria McLaren
 John & Carolynne McLure Fund
 - The Winnipeg Foundation
 Donald G. McNabb
 Barb Melnychuk
 Loretta Merriam
 Albert & Judith Metcalfe[†]
 Susie Miclash
 Irene Miller & the late Claire Miller
 Catherine Lambeth & Grant Mitchell
 Marc Monnin & Donna Miller
 Tom & Susan Mooney
 Rodney Moorhead
 Katherine Morgan
 Sagan Morrow[†]
 Cathy Moser & Jeff Itzkow
 Brad Nance[†]
 Vanessa Dowostawski
 D. & G. Nytepchuk
 Sunny Oh
 Joanne Olchoweki
 John Osler
 Jeff Palamar
 Paulette Pappel
 Dr. Philip Pass
 William & Helen Patterson
 Myron Pawlowsky & Susan Boulter
 Peter & Anita Pelech
 Jo-Ann & Harvey Peltz[†]
 Bonnie Penno[†]
 Jan Perchal
 Linda Pettit
 Arthur Pfeffer
 Rick Pinchin
 Beth & John Pollard
 Nancy & Brett Porth
 Maureen Prendiville & Paul Jensen
 Nalini Reddy[†]
 Cheryl Reid
 Joy Reimer
 Lorraine & Ernest Reinfort
 Jim & Leney Richardson
 Joan Richardson
 Marilyn Robbins
 Cindy Rodych

Tamara Rossie
 Deborah & Neil Rostkowski
 Debbie Roy
 Michael T. Ruta
 Paul & Cathy Samyn
 Onnolee Scharf[†]
 Roland Schneider
 Harald & Vicki Schulz
 Faye Scott
 Gail Screaton
 Claire Semchuk
 In memory of Sybil Shack for the
 benefit of MTC
 Sharon Shaydak
 Blake Shiario
 Dr. Elinor Simons
 Mark C., Sabrina & Siena Smith
 Al* & Virginia Snyder
 Geri Spencer
 Maria Steeds
 Heather Stefanson
 Anthony Steffes & David Viggars
 Dennis Stewner
 Heidi Struck^{††}
 Eleanor Suderman
 Mary Ann Supleve
 Ray & Fenella Temmerman
 Paulette Theberge
 Malcolm & Shirley Tinsley
 Doug & Heather Tisdale
 Doug & Deanna Tkach
 Jen & Kevin Tomanek
 Elaine Toms
 Gord & Lorena Trann
 Brad Baydock & Wendy Tretiak
 Dr. Stephen Tritt & Dr. Sharon
 Goszer Tritt
 Grant Tweed
 Dr. Kristel van Ineveld
 Vita Health Fresh Market
 Stirling Walkes
 Deanna Waters
 Leslie* & Sean Watson*
 John Webster
 Alys-Lynne & Steve West*
 Lionel & Lorraine Wiens
 Catherine Wilkie
 Keith & Kristen Wilson
 Anita & Kevin Wolfe
 Richard L. Yaffe & John A. Statham[§]
 Ryan Zajac
 Olia & Roman Zubach
 2 Anonymous[†]
 23 Anonymous
\$150-249
 Sharon Allentuck
 Bonnie & Joel Antel
 Lynne M Arnason
 Nadine Audet[†]
 Marilyn Baker
 Richard & Nancy Ball

Josie & Richard Bartlinski
 Karen & John Bate
 Brenda Batzel
 Sandra Bazin
 Kevin Becker
 Jim & Doreen Beckstead
 Byrnes Benoit
 Trish Bergal
 Bruce & Shelley Bertrand-Meadows
 Kristine Betker & Eric Kananoja
 Don & Diane Bewell
 Barbara Bielak
 Val & Blair Bingeman
 Michael Blais
 Joan Blight
 Marnie Bollard
 Mavis Bollman & Ray Hesslein
 Colleen & Stephen Bonner
 Bruce & Karen Boyd
 Patricia Bozyk
 Don & Cheryl Breakey
 Janine Brémault Bamford
 Kat Brosowsky & Paul Gagne
 Mrs. Donna J. Brown
 Sean & Melanie Bueckert
 John Burrows
 Cheryl Butler
 Debbie Campbell
 Lawrie & Bea Cherniack
 Shelley Chochinov
 Dr. T. I. Choptiany
 Katherine Cobor
 Diane Connelly
 Joan E. Coombe
 Sarah Corley
 Laurel Cumming
 Ashleigh Czyrnyj
 Werner & Judy Danchura
 Linda Daniels
 Chris Darazsi[†]
 Alison Darling
 Tessa Denton
 Lorraine & Alan Dewar
 Julie Diakiw
 Vance & Sallee Dick
 Bev & Allan Doern[†]
 Heather Domke
 Sheila Domke & Stephen Ross
 Thomas P Dooley
 Rob Dryden
 John & Ada Ducas
 Harry & Mary Lynn Duckworth
 Marilyn Dudek
 Roberta Dyck
 Barbara & David Ediger[†]
 Carly & Nevin Edmundson
 John Edwards & Wendy Stelko
 John & Marilyn Ekins
 Ruth & Ernest Epp
 Jemara Fay[†]
 Marion Fellingner
 Patricia Fitzpatrick

*Current Royal MTC Board of Trustees/Advisory Board members †Current Royal MTC staff ‡Monthly Donors/Drama Club §Fondly Remembered

SUPPORTERS

Nancy Flintoft & John McWilliams
 Lawrence Foster*
 Jeff Fowler
 Donna Frame*
 Christine M Freeman
 Anne Friesen
 Ron Gaffray
 Gloria & Rick Gallant
 Juanita Giesbrecht
 Patti & Rick Gilhuly
 Ian & Lorraine Glassford
 Benjamin Goldenberg
 John & Marcia Gordon
 Sylvia Graham
 Russ Greene & Sandra Paterson-Greene
 Robert Gregoire*
 Abigail Grieder
 Janet Hall
 Paul & Val Harack
 Shellie & Grant Hatch*
 Teresa A. Hay
 Ingrid Hayes
 Joe Healey
 Mary & David Hickling
 Lenore & John Hodge
 Mary Hodge
 Jennie Hogan
 Lisa Hunt & Hugh Wichenko*
 Jean Hyrich
 Stu & Alice Iverson
 Maureen Jack
 Wendy & Jim Jackson
 Elizabeth Janzen
 Morgan & Frank Johnson
 Verna Johnson
 Robert & Karen Johnston
 Brian & Renee Kaplan
 Ursula & John Kelemen
 Shan Dickson & Andrea Kneale
 Ms. Julie Koehn
 Donna & Jim Komishon
 Jacki & Sheldon Koven
 Lorraine Kraichy*
 Terri Krasnowski*
 Paula Kristjanson Hasiuk
 Howard & Jane Kroeger
 Colin Kyle
 Robert Lafond
 Teena Laird
 Bryen Lebar & Patricia Sauder*
 Saul & Kathy Leibl
 Susanne Leslie*
 Tim & Kate Letkemann*
 Becky Lett*
 Stan & Susan Lipnowski
 Judy & Eric Lister
 John & Joy Loewen*
 Sarah, Chris & Lori Luby
 Carol Ann Lussier
 Lyndsay Manaigre
 Dr. Neil & Elaine Margolis
 Ilse Marotta

Lynne Martin* - in memory of
 Omar Martin
 Agatha Massey
 Linda Matheson
 Barbara McCandless
 Judy McCleary
 Linda A McMillan
 Michael & Debra McMullen
 Barry McNabb
 Catarina Mello Schultz*
 Gail Mildren - in memory of Gladys & Walter Mildren
 Celoris Miller
 Cressida Mills
 Jan Montgomery
 Marlene Mortimer
 Suzanne & Kenneth Munroe
 B. Nagamori
 Harold & Nancy Nagy
 Leslie Nichol
 Robert Nickel
 Helen Norrie
 Tom Nowicki
 Patrick & Sherry O'Connor
 Irene Onuch
 Rita & Mark O'Rourke
 Cynthia Orris
 Theresa Oye
 Kristen Pachet
 Sonjia Pasiechnik
 Brian Perchaluk
 Ingrid Peters Fransen
 Donald & Elaine Peters
 Kristin Peterson
 Funseekers Travel
 Cynthia Plett
 Denise Plett
 Carla Plummer
 M. Lois Powne
 Doug & Eunice Pratt
 Vivian E. Rachlis
 Roberta & Rick Rackal
 Dr. R. & Audrey Ramchandarr
 Jim & Kathy Ranick*
 Linda Ratynski
 Candace & Adam Rea*
 Lucas Redekop
 Margaret Redekop
 Mark & Gwen Relp
 Shelley Rennie
 The Robbins Family
 Nicole Robidoux
 Linda Robinson
 Harold & Vera Romanychyn
 Mary Anne Rosenbloom
 Pat & Michelle Rowan
 Cecile Roy
 Maria & Kyle Sabourin
 David & Tammie Sainsbury
 K & D Saloranta
 Heather Sandilands*
 Connie Sawatsky
 Dan & Sandra Sawatzky

Trudy Schroeder
 Carol Scurfield
 Shimon Segal
 Irka Semaniuk
 Greg Sexsmith & Joni Lavender Sexsmith*
 Jo-Anne & Ian Seymour
 Kumar Sharma & Angelina DiSanto
 Jim & Susan Shaw
 Sydney Shore & Wayne Sharpe
 Debbie Shymko
 Linda Simpson
 Meera & Sach Sinha
 Ms. Judy Nichol & Dr. Jim Skinner
 Earl Slimmon
 David Smith
 Margo & Dennis Smith
 Jon Sorokowski
 Caterina & George Sotiriadis
 Jacqueline St. Hill
 Karen Stach
 Sharon Stanley
 Kim Stephens
 Wally Stewart & Lori Tighe
 Shirley & Tom Strutt
 Charlotte Summerly
 Alec Surasky
 Anita Tait
 Heather & Donald Talocka
 Mala & Andrew Teeluck*
 Jeff Thiessen
 Linda Thomas
 Lesley Thomson
 Elaine Tresoor
 Eric Turner*
 Chris Turyk & Bryce Weedmark*
 Robert Tyler
 Teresa Visser
 Gwen & Helmut Waedt
 Jane & Don Walters*
 Paul & Laura Walton*
 Robert & Sherilyn Ward
 John & Marjorie Warkentin
 Hymie & Shaaron Weinstein
 Ryan Weiss
 Mary Agnes Welch*
 Lydia & Michael West
 Al & Pat Wherrett*
 Florence & Donald Whitmore
 Terence Wiebe
 Les & Terry Wiens
 Theresa Wiktorski
 Leslie Wilson
 Gustine & Dennis Wilton
 Reed & Arla Winstone
 Michael & Lorilee Woelcke
 Deborah A. Wolfe
 James Wood*
 Margaret & Paul Wright
 Gloria Zacharias
 Kerry Zakowich
 2 Anonymous*
 23 Anonymous

*Current Royal MTC Board of Trustees/Advisory Board members

*Current Royal MTC staff

*Monthly Donors/Drama Club



Proud supporter of the
Royal Manitoba Theatre Centre.

BellMTS

SUPPORTERS

SPONSORS

Air Canada
The Asper Family Foundation
The Gail Asper Family Foundation
The Asper Foundation
Bell MTS
Birchwood Lexus
BMO Financial Group
Bonaventure Travel Inc.
Canada Life
CIBC Imperial Markets
Dycom Direct Mail Services
Esdale Printing Co. Ltd.
Exchange District BIZ
Fillmore Riley LLP
Free Press
GFL Environmental
Global Drain Technologies
IG Private Wealth Management
Jones & Co Wine Merchants
Lawton Partners
Lawyers Financial
Liquor Mart
Manitoba Bar Association
Manitoba Liquor and Lotteries
McDiarmid Flowers
McNally Robinson Booksellers
The North West Company
POS Systems
PRA Inc.
Red River Co-operative Ltd.
Relish Ideas
Richardson Foundation
Soirée Event Planning
Stantec Consulting Ltd.
Tanchak Wealth Management Group
Taylor McCaffrey LLP
TD Bank Group
Torque Brewing
University of Manitoba
Westgate Enterprises
WOW! Catering

CORPORATE DIRECTOR'S CIRCLE

\$25,000+

Johnston Group Inc.
Richardson Foundation

\$5,000-9,999

Cambrian Credit Union
Maxim Truck & Trailer - Doug
Harvey & Jan Shute

\$3,000-4,999

Gendis Inc.

Maple Leaf Construction Ltd., Blake
Fitzpatrick

\$1,200-2,999

Arthur J. Gallagher Insurance and
Risk Management
Domo Gasoline Corporation Ltd.
- Kate M. Everett, President
Manitoba's Credit Unions
Pollard Banknote Limited
Qualico

CORPORATE COMPANY CIRCLE

\$600-1,199

Mid West Packaging Limited
Premier Printing Ltd.

\$300-599

Border Brokers Inc.

\$150-299

Patill/St. James Insurance

FOUNDERS' CIRCLE

Wayne & Lee Anderson
Gail Asper, OC, OM, LLD*
Zdzislaw (Zaz) Bajon & Patricia
Hunter
Peggy Barker & Ron McKinnon*
Mariam Bernstein
Marjorie & Morley* Blankstein
Duane* & Pauline Braun
Katelynd Brosowsky & Paul Gagné
Doneta Brothie, CM* &
Harry Brothie
Ken* & Denise Brown
David & Lianne Carefoot
Len & Heather Cariou
Terri Cherniack & Steven Schipper,
CM, OM
Jennifer Cheslock & George Buri
David Christianson & Vera
Steinberger
David* & Barbara Christie
Gerry* & Chris Couture
D. J. Cowan
Hugh B. Cowan
Kerry Dangerfield*
Laurie Lam & Larry Desrochers
Glen* & Joan Dyrda
Robert & Florence Eastwood
Don & Elsie Elias
Bill* & Gayle Fischer
Anthony* & Jennifer Fletcher
Jack Fraser

James Gibbs*
Sandy & Rheel Gousseau
Rita Gunn* & Gregory Mason
John* & Nicola Guttormson
Ahava Halpern & Frank Lavitt
Linda Hamilton & Grange Morrow
Sharon Hamilton
Gary Hannafor* & Cathy Rushton
Ted* & Gail Hechter
Elaine Heinicke*
Camilla Holland
Shawn Hughes & Bruno Koehn
June* & Bob Jackson Fund for the
Performing Arts
Maureen E. Jay
Andrew & Wendy Jensen
David & Diane Johnston
Dr. Leonard & Hope* Kahane
Janis Kaminsky
Jason Kasper
John Kearsey
Gordon & Anne Keatch*
Rob Kennedy & Claudette Leclerc
Serena Helen Kraayeveld
Leona J. MacDonald
Cheryl Johansson* & Michael
Mainman
Mark & Gloria Mancini
Virginia Martin*
Jim* & Penny McLandress
Barb Melnychuk
Bob & Pat Migliore
Jeffrey Morton*
Ken & Sharon Mould
Dr. Liam Murphy*
Robb & Heather Paterson
Chris Pearce
Scott Penner
Gina & John C. Petersmeyer
Drs. Bill Pope & Elizabeth
Tippett-Pope
K. Heather Power & Harold Klause
Margaret Redmond* & Greg Gillis
Marlene Reiss & Perry Rose
Edward Fisher & Lyse Rémillard
Joan D. Richardson
Jean Riggall
Michelle Rowan
Michael T. Ruta
Sharon Ryman
Susan Skinner*
Kevin Hines & Shelly Smith-Hines
Bill & Laurie* Speers
Deborah Spracklin
Joan Stephens
Joanne Tait
Suzanne Ulliot
Lionel & Lorraine Wiens
Margaret* & Alfred Wikjord
Richard L. Yaffe & John A. Statham*
Brenda Zaporzan*
3 Anonymous

*Current Royal MTC Board of Trustees/Advisory Board members *Current Royal MTC staff *Monthly Donors/Drama Club *Fondly Remembered
If you have remembered Royal MTC in your will, please let us know.

SUPPORTERS

TRIBUTE GIFTS

A Son's tribute to Berdie & Irvin Cohen - for the Warehouse

A Son's tribute to Berdie & Irvin Cohen

Hy & Pat Cohen Fund
Jewish Foundation of Manitoba

Marym & Izzy Peltz Fund
Jewish Foundation of Manitoba

In memory of Ian Ross
Carman Johnston

In memory of Sybil Shack for the benefit of MTC

In memory of Helene Winston
Marilyn Baker

ENDOWMENT - STEVEN SCHIPPER FUND

Many thanks to the generosity of our Endowment Fund donors who gave a gift or fulfilled a pledge payment between Oct 1, 2024 and Dec 5, 2025. Amounts listed are cumulative.

\$5,000,000+

Government of Canada/
Gouvernement du Canada
Canadian Heritage/Patrimoine
canadien

\$100,000-249,999

Manitoba Theatre Centre Volunteer
Corps of Ushers

The Leigh & Liam Murphy Family
Fund

Henriette Ricou & Jure Manfreda
Anonymous

\$50,000-99,999

Drs. Ken & Sharon Mould

\$25,000-49,999

Marilyn & Jim Burt
Susan Glass & Arni Thorsteinson
Terracon Development Ltd.

\$10,000-24,999

Peggy Barker & Ron McKinnon^s
Don & Sheila Katz
Susan & Keith Knox
Garry Markham
Norma Anne Padilla
L. Blair Philpott & Tom Kynman

\$5,000-9,999

Margaret Caie
Ron & Carol Chapman
Pam & Andrew Cooke
Gina O'Connor & John C.
Petersmeyer*
Marlene Reiss & Perry Rose
Barbara Scheuneman
Elaine Toms
Dr. Dorothy Y. Young
2 Anonymous

\$2,500-4,999

Don & Cheryl Breakey
Carol Budnick
Rita & Don Campbell
Art & Donna Chow
Roberta Dyck
Michael & Lynn Evans
David & Ewenia Gnutel
John & Margaret Graham
Barbara Main
Jean & Lisa Neron

\$1,000-2,499

Miranda & Hannah Baran
Ron Boyd
Dorothy Davidson
Teresa A. Hay
Jordan Janisse & Teresa Cooper

Estelle Meyers
Paul & Elaine Neelon
Edna Poulter
Sandra Sadler
Jim & Susan Shaw
Howie & Sue Simpson
Geri & Peter Spencer
Deborah Spracklin
2 Anonymous

\$500-999

Helene Dyck
Mr. & Mrs. Fred Kisil
Bob & Pat Migliore
Marlene Mortimer
Ivor & Lorna Schledewitz
Bryce & Jenna Simes
Gabor Vamos & Brenda Silver

UP TO \$499

Ingrid Bolbecher
Adam & Tara Klaponski
Elliot Leven
Mary-Anne Lovallo
Jacqueline L. Melnyk
Theresa Oye
Edward Fisher & Lyse Rémillard
Debbie Wilson
2 Anonymous

**MANY THANKS TO
OUR VOLUNTEERS!**

For just \$10/month your membership gets you access to the backstage drama at MTC. Includes monthly stories, tours of the building, special events with seasoned professionals, plus a full tax receipt and all the benefits of being a Star Patron.



ALREADY A DONOR AND INTERESTED
IN SWITCHING TO MONTHLY GIFTS?
CALL BRENDAN AT 204 954 6412.

ROYALMTC.CA/DRAMACLUB
FOR MORE INFORMATION

PHOTO BY LEIF NORMAN



SUPPORTING PARTNERS

CORE FUNDERS



Prairies Economic
Development Canada

Développement économique
Canada pour les Prairies

Canada

Manitoba



Canada Council
for the Arts

Conseil des arts
du Canada



CONSEIL DES
ARTS DU
MANITOBA
ARTS COUNCIL



WINNIPEG
ARTS COUNCIL

THE
WINNIPEG
FOUNDATION
For Good. Forever.

EXCLUSIVE PRODUCTION SUPPORTER



RICHARDSON
FOUNDATION

TOM HENDRY WAREHOUSE SEASON SPONSOR



JOHN HIRSCH MAINSTAGE PRODUCTION SPONSORS

THE
ASPER
FOUNDATION

GAIL ASPER
FAMILY FOUNDATION

TOM HENDRY WAREHOUSE PRODUCTION SPONSOR

THE
ASPER
FOUNDATION

SUPPORTING PARTNERS

LOYAL PARTNERS



REGIONAL TOUR



BLACK & WHITE BALL



WINNIPEG FRINGE THEATRE FESTIVAL



BEHIND THE SCENES

BOARD OF TRUSTEES

HONORARY MEMBERS

Her Honour, Lt. Governor Anita R. Neville
The Honourable Wab Kinew, Premier of Manitoba
His Worship, Mayor Scott Gillingham

EXECUTIVE OFFICERS

David Kroft, Chair
John Guttormson, Past Co-Chair
Laurie Speers, Past Co-Chair, Winnipeg Fringe Theatre Festival
Advisory Committee, Chair
Emily Burt, Treasurer & Organizational Performance Committee Chair
Jocelyne Prefontaine, Secretary
Claire Workman, Resource Development Committee Chair
Susan Freig, Governance & Strategic Planning Committee Chair
Nalini Reddy, Inclusion, Diversity, Equity & Access Committee Chair
Loren Remillard, Nominating Committee Chair

TRUSTEES

Blair Doell	Katrina Lee-Kwen
Brad Favel	Linda McGarva-Cohen
Kerry Feeney	Patrick McLenahan
Jessica Floresco	Sudhir Sandhu
James Kepp	Nicole Zajac

ADVISORY COUNCIL

John Guttormson, Chair	Colin R. MacArthur, KC
Gail Asper	Patrick J. Matthews
Doneta Brothie, CM	Jim McLandress
Angus Campbell	Jeffrey Morton, FCA
David Christie	Hon. Jack Murta
Gerry Couture	Lillian Neaman
Kerry Dangerfield	Lawrence Prout
Hy Dashevsky	Jeff Quinton
Glen Dyrda, FCA	Patricia Rabson
Anthony C. Fletcher	Margaret Redmond
Jean Giguere	Susan Skinner
Charron Hamilton	Al Snyder
Gary Hannaford, FCA	Maureen Watchorn
Ken Houssin	

STAFF

ACCOUNTING/FINANCE

Carlos Betonio, Payroll Coordinator
Misty Bromley, CPA, CGA, Director of Finance
Christina Smith, Accountant

ADMINISTRATION

Kurt Brown, HR Generalist
Randy Desrochers, Capital Projects Manager
Evan Klassen, Executive Director
Kathrin Moncaster, IT Manager

ARTISTIC

Melissa Langdon, Artistic Programs Coordinator
Isabelle Ly, Producer
Ian Ross, Program Director, Pimootayowin Creators Circle[§]
Kelly Thornton, Artistic Director
Leslie Watson, Company Manager

BOX OFFICE

Meaghan Fletcher, Box Office Manager
Box Office Team Leads: Jane Hunter, Shayla Meeroff
Box Office Representatives: Sharon Bunn, Ehrian Federis,
Artie Lorraine, Daniel Mitchell, Avery Mittermayr,
Carolyn Schroeder, Dyonssalynn Stoll, Tatiana Tuazon,
Katie Welham

CARPENTRY (JOHN HIRSCH MAINSTAGE)

Christian Hadley, Layout Carpenter
Brent Letain, Master Carpenter
Chris Seida, Scenic Carpenter

DEVELOPMENT

Patrick Hanan, Development Database Specialist
Brendan McKeen, Individual Giving Manager
Heidi Struck, Director of Development

COMMUNITY ENGAGEMENT & AUDIENCE DEVELOPMENT

Colleen Hrabí, Director of Community Engagement & Audience Development
Esteban Seunarine, Volunteer Manager
Cole Reuther, Front of House Manager
Assistant Front of House Managers: Trish Cooper, Vanessa Gates,
Alyna Sikorsky, Amelia Tremblay, Aysia Watts
Front of House Staff: Dane Bjornson, Renelle Chartier, Meagan
Chrest, Chael Donald, Miles Ehlers, Hannah Gilmore, Cassidy
Groening, Joanna Houston, Willow Isaac, Danielle Ladouceur,
Christine Leslie, Kimmy Martin, Keely Mcpeek, Lauren Minaker,
Christina Reid, Eve Ross Moore, Journey Skjaerlund, Cobi
Winston

MAINTENANCE

Mason Campbell, Building Custodian
Chris Fletcher, Building Manager

MARKETING & COMMUNICATIONS

Rachelle Blatta, Communications & Social Media Manager
Ksenia Broda-Milian, Education & Enrichment Manager
Sue Caughlin, Marketing & Communications Manager
Michaela Langit, Database Support Technician
Desiree La Vallee, Ticketing Application Specialist
Savannah Lillies, Marketing & Communications Coordinator
Christina Reuther, Sales Coordinator
Jocelyn Unrau, Director of Marketing & Communications

PAINT

Carla Schroeder, Head Scenic Artist
Larissa Shabaga, Interim Assistant Head Scenic Artist

PRODUCTION

Eiden French, Assistant Technical Director
Ian Kirk, Production Driver
Allison Loat, Director of Production
Donnie Osler, Technical Director
Denise Piche, Assistant Production Manager
Alex Sinclair, Associate Technical Director

PROPERTIES

Khaeler Bautista, Props Builder
Zoë Leclerc-Kennedy, Assistant Head of Props
Jamie Plummer, Head of Props

STAGE CREW

Kayla McSwain, Head of Wardrobe (Stage)
Claude Robert, Head Electrician
Jessica Rose, Head of Audio
Liam Shattuck, Head Stage Hand
Chris Thomson, Head Carpenter

TOM HENDRY WAREHOUSE

Meagan Chrest, Scenic Carpenter
Tim Clark, Head of Sound
Evan King, Head Electrician
Ryan Spracklin, Master Carpenter

WARDROBE

Thora Lamont, Lead Cutter
Martha Boyce, Wardrobe First Hand
Heather Thorleifson, Associate Head of Wardrobe
Jackie Van Winkle, Head of Wardrobe/Buyer

WIGS

Beverley Covert, Head of Wigs/Make-Up
Nico Pielou, Associate Head of Wigs/Make-Up
Victoria Stevens, Interim Head of Wigs/Make-Up

WINNIPEG FRINGE THEATRE FESTIVAL

Chuck McEwen, Executive Producer
Tori Popp, Festival Manager

HONORARY STAFF

Zaz Bajon, General Manager Emeritus
Steven Schipper, CM, OM, Artistic Director Emeritus

[§]Fondly Remembered

BEHIND THE SCENES

ADDITIONAL PRODUCTION STAFF

AGATHA CHRISTIE'S MURDER ON THE ORIENT EXPRESS

Linda Beech, Props
Carolyn Bradshaw, Stitcher
Kim Crossley, Cutter
Kari Hagness, Props
Penny Hanford, Stitcher
Elana Honcharuk, Props
Samantha Lekach, Stitcher
Karen Luchak, Stitcher
Barb Mackenzie, Stitcher
Evan Stillwater, Tailor
Joy Willis, Stitcher
Anna Yaworski, First Hand
Additional staff provided by IATSE Local 63

HOLLAND

Additional staff provided by IATSE Local 63

AGATHA CHRISTIE'S MURDER ON THE ORIENT EXPRESS

CITADEL THEATRE ADMINISTRATION STAFF

Daryl Cloran, Artistic Director
Jessie van Rijn, Executive Director
Bridget Norris Jones, Producer
Michael Erwin, Director of Production

HOLLAND

THEATRE PROJECTS MANITOBA ADMINISTRATION STAFF

Suzie Martin, Artistic Director
Jason Hooper, Managing Director
Key Caguioa, Communications & Patron Experience Manager
Zanifa Rasool, Communications Associate
Ian Hodges, Bookkeeper

THEATRE PROJECTS MANITOBA BOARD OF TRUSTEES

Monique Gauthier, Chair
Anne Bolton, Past Chair
Rhea Rodych-Rasidescu, Secretary
Gloria Koop, Treasurer
Adam Charbonneau, Director
Connor Joseph, Director
Stef Meeroff, Director
Liz Parsons, Director
Denby Perez, Director
Cheryl Tereck, Director

Act Like a Star!

These tips will make you a stand-out performer (in a good way)!

SCENTS AND SENSIBILITY

Many theatre lovers experience adverse medical reactions from scented products. **Please consider others before using scented products.**

PARK YOUR MOBILE DEVICE

We know something interesting is happening on social media. It always is. But your neighbours want to watch the play. **Please turn off all mobile devices.**

THE SOUND OF SILENCE

Our theatre has great acoustics. So **when you're talking during the show, everyone can hear you.** Your neighbours, the ushers and even the actors. We want you to talk about the show but at intermission or after the final bows.

HEALTH AND COMFORT

If you have a cough, kindly consider wearing a mask. We have masks available for anyone who wishes to wear one.

Cast of *Elf - The Musical*.
PHOTO BY DYLAN HEWLETT

Your Support Transforms the Life of an Artist

For an emerging theatre artist, the path to a professional career is exciting, challenging and rewarding, but it can also be financially daunting. The costs of training, materials, equipment and living expenses can create real barriers for talented people who are eager to follow their theatre dreams.

That's where the Jean Murray - Moray Sinclair Fund is making a difference. MTC nurtures local talent by providing scholarships and apprenticeships that make it possible for individuals to focus on the craft they love. Scholarships don't just relieve financial pressure, they also offer validation, hope and the powerful message that someone believes in the emerging artist's potential.

And you, the donors, have always been the driving force behind this long-standing Fund at MTC. Now, it is growing.

In addition to scholarships and apprenticeships, the Scholarship Fund will also help power MTC's Assistant Program which provides job opportunities for emerging professional artists or mid-career and established artists transitioning to another discipline. These placements offer artists and craftspeople hands-on experience and mentorship to build confidence and improve skills.

By expanding the fund, we're ensuring that a broader range of gifted young people onstage, backstage and everywhere in between have access to the support they need at a crucial moment in their development.

And your donation to the Fund makes that possible.

Every dollar you give during Pass the Hat directly supports emerging artists, whether it's a student working toward their degree or an apprentice gaining real-world experience at MTC. Your generosity will empower an individual to train, grow and imagine a future in this demanding field with the stability and encouragement they need to succeed.

And right now, all online donations will be **matched by the Zita and Mark Bernstein Family Foundation, up to \$10,000**, doubling your impact.

You can make your gift online, which will be matched, by scanning the QR code to donate.

Join us in nurturing the next generation of artists, makers and storytellers. Together, we can open doors, fuel dreams and build a brighter future for theatre. ●

**SCAN HERE TO
DONATE TODAY!**



THE ROYAL MANITOBA THEATRE CENTRE
AND MANITOBA LIQUOR AND LOTTERIES PRESENT

HOCKEY MOM HOCKEY DAD

BY MICHAEL MELSKI



FEB 20 Portage la Prairie, MB
FEB 21 Arborg, MB
FEB 22 Great Falls, MB
FEB 24 Atikokan, ON
FEB 26 Sioux Lookout, ON
FEB 27 Dryden, ON
FEB 28 Kenora, ON

MAR 1 Steinbach, MB
MAR 5 Flin Flon, MB
MAR 6 Snow Lake, MB
MAR 8 Strathclair, MB
MAR 9 Minnedosa, MB
MAR 10 Deloraine, MB
MAR 12 Souris, MB

MAR 13 Dauphin, MB
MAR 14 Crystal City, MB
MAR 15 Brandon, MB
MAR 16 MacGregor, MB
MAR 17 Gimli, MB

ROYAL
MTC
MANITOBA THEATRE CENTRE

REGIONAL
TOUR

PRESENTING SPONSOR



RoyalMTC.ca

One action. Big change.

Start here.

humanrights.ca



Canadian
Museum for
**Human
Rights**

Canada