

OVATION

ROYAL
MTC
MANITOBA THEATRE CENTRE

VOL 32 • NO 2
NOV/DEC 2024

LITTLE WOMEN



Based on the novels *Little Women*
and *Good Wives* by
Louisa May Alcott

Adapted for the stage by
Jordi Mand

JOHN
HIRSCH
MAINSTAGE



University
of Manitoba

BISON

AT THE CENTRE OF
SOCIAL INNOVATION

Diane Roussin UM alum

How do we make things better for the children and families of Winnipeg's North End? Ask UM grad *Diane Roussin [BSW/96]*.

As the Winnipeg Boldness Project Director, one of Canada's leading social innovation labs, she's combining community wisdom with world-leading science to create generational change.



MESSAGE FROM THE ARTISTIC DIRECTOR



Louisa May Alcott's *Little Women* is the kind of novel that passes through generations. I remember my daughter started with an abridged version made for young readers, then inherited the full book which I've had since childhood. She was consumed by the world of the March sisters. And, like so many, devoured the film adaptations, first with Winona Ryder as the feisty Jo March, then with director Greta Gerwig's lively version, which brought a prismatic perspective to the story, racing back and forth in time, charting their journey towards adulthood. And now my daughter stands on the precipice of adulthood herself and the themes resonate even more.

This brilliant adaptation by Jordi Mand honours Alcott's two novels *Little Women* and *Good Wives* and brings to the fore the world of choices that stand before any young person, including Laurie and John, who also struggle with societal expectations as young men. What has sustained these novels' popularity for so long is that they capture the essence of that awkward and uncomfortable journey of youth towards identity, and for women especially, the imperative to listen to your own voice amidst a myriad of competing messages. The story is also set against the backdrop of the American Civil War, paralleling a nation searching for its identity. And what's old is new again today.

I'm thrilled to bring this adaptation to the stage. To bring you into the home of the March family this holiday season as they pursue their lives with joy, ambition and, above all, love.

Enjoy the show.

A handwritten signature in black ink, which appears to read "Kelly".

Royal Manitoba Theatre Centre is proud to call Manitoba home. Royal MTC is located in Winnipeg on Treaty 1, the traditional territory of the Anishinaabeg, Cree, Anishininew and Dakota people, and the National Homeland of the Red River Métis. We are thankful for the benefits sharing this land has afforded us, acknowledge the responsibilities of the Treaties, and embrace the opportunity to partner with Indigenous communities in the spirit of reconciliation and collaboration.

THEATRE ABBREVIATION LEGEND

A.C.T. American Conservatory Theater • San Francisco, CA
Arts Club Arts Club Theatre Company • Vancouver, BC
ATF Atlantic Theatre Festival • Wolfville, NS
ATP Alberta Theatre Projects • Calgary, AB
BAM Brooklyn Academy of Music • NYC
Bard on the Beach Bard on the Beach Shakespeare Festival • Vancouver, BC
Belfry The Belfry Theatre • Victoria, BC
Blyth Blyth Theatre Festival • Blyth, ON
Broadway Theatre district • New York, NY
CBC Canadian Broadcasting Corporation
Centaur Centaur Theatre Company • Montreal, QC
Citadel The Citadel Theatre • Edmonton, AB
COC Canadian Opera Company • Toronto, ON
CS Canadian Stage • Toronto, ON
Dora Dora Mavor Moore Award • Toronto, ON
Drayton Drayton Entertainment • Ontario
Dry Cold Dry Cold Productions • Winnipeg, MB
Factory Factory Theatre • Toronto, ON
GCTC The Great Canadian Theatre Company • Ottawa, ON
Grand The Grand Theatre • London, ON
HGJT Harold Green Jewish Theatre Company • Toronto, ON
Mirvish Mirvish Productions • Toronto, ON
Moving Target Moving Target Theatre Company • Winnipeg, MB
MTP Manitoba Theatre for Young People • Winnipeg, MB
NAC National Arts Centre • Ottawa, ON
Necessary Angel Necessary Angel Theatre Company • Toronto, ON
Neptune Neptune Theatre • Halifax, NS
NFB National Film Board of Canada
NTS National Theatre School of Canada • Montreal, QC
Persephone Persephone Theatre • Saskatoon, SK
PTAM Popular Theatre Alliance of Manitoba • Winnipeg, MB
PTE Prairie Theatre Exchange • Winnipeg, MB

Rainbow Rainbow Stage • Winnipeg, MB
RNT Royal National Theatre • London, England
Royal Alex The Royal Alexandra Theatre • Toronto, ON
RSC Royal Shakespeare Company • Stratford-upon-Avon, England
RWB Royal Winnipeg Ballet • Winnipeg, MB
Sarasvati Sarasvati Productions • Winnipeg, MB
Segal The Segal Centre for Performing Arts • Montreal, QC
Shaw Shaw Festival • Niagara-on-the-Lake, ON
SIR Shakespeare in the Ruins • Winnipeg, MB
Soulpepper Soulpepper Theatre Company • Toronto, ON
Stratford Stratford Festival • Stratford, ON
SummerWorks SummerWorks Theatre Festival • Toronto, ON
TA Theatre Aquarius • Hamilton, ON
Tarragon Tarragon Theatre • Toronto, ON
TBTR Theatre by the River • Winnipeg, MB
TC Theatre Calgary • Calgary, AB
TIFT Talk is Free Theatre • Barrie, ON
TNB Theatre New Brunswick • Fredericton, NB
Toronto Free Toronto Free Theatre • Toronto, ON
TPM Theatre Projects Manitoba • Winnipeg, MB
TSO Toronto Symphony Orchestra
U of M University of Manitoba
U of T University of Toronto
U of W University of Winnipeg
ViC The Village Conservatory for Music Theatre • Winnipeg, MB
VP Vancouver Playhouse Theatre Company • Vancouver, BC
West End Theatre district • London, England
WCT Western Canada Theatre • Kamloops, BC
WJT Winnipeg Jewish Theatre
WSO Winnipeg Symphony Orchestra
WST Winnipeg Studio Theatre
YPT Young People's Theatre • Toronto, ON
zone41 zone41 theatre • Winnipeg, MB

OVATION

VOLUME 32, NUMBER 2
NOVEMBER/DECEMBER 2024

Ovation is published six times per theatre season and has an approximate yearly circulation of 85,000.

PRINTING: Premier Printing Ltd.

ADVERTISING INQUIRIES

Savannah Lillies

TELEPHONE: 204 934 0309

EMAIL: slillies@royalmtc.ca



Royal Manitoba Theatre Centre
174 Market Avenue
Winnipeg, MB R3B 0P8
Canada

RoyalMTC.ca

BOX OFFICE: 204 942 6537

ADMINISTRATION: 204 956 1340

FAX: 204 947 3741

Royal MTC is a member of the Professional Association of Canadian Theatres and engages, under the terms of the Canadian Theatre Agreement, professional artists who are members of the Canadian Actors' Equity Association.

Scenery, Carpentry and Show Running Crew at the John Hirsch Mainstage and the Tom Hendry Warehouse are members of IATSE Local 63.

USHERS • Royal MTC's loyal volunteer ushers are available at every performance to assist patrons.

LATECOMERS • Latecomers will be seated at the discretion of the House Manager.

COURTESY TO OTHERS • Talking, candy wrappers and coughing are distracting to fellow patrons and actors. We ask each patron to please keep noise to a minimum during a performance. Thank you for your cooperation.

SCENTS AND ALLERGIES • A number of Royal MTC patrons have expressed concerns regarding medical reactions caused by scented products, so much so that they can't enjoy the show. Please consider others before using items such as colognes, perfumes and hairspray. Your thoughtfulness is appreciated.

HEARING ENHANCEMENT • Sennheiser Infrared Listening Devices are available free of charge in the lobby at the John Hirsch Mainstage and Tom Hendry Warehouse, supplied by the Royal MTC Volunteer Corps of Ushers Capital Campaign donation. Please see the House Manager for details.

PROHIBITED • The use of cameras and recording devices is strictly prohibited. Mobile devices must be turned off. To be contacted in an emergency, leave your name and seat number with the House Manager.

WARNINGS • On occasion, Royal MTC's productions may contain script-specific smoking of non-tobacco products, special effects and language/content warnings. For more information on specific productions, please visit royalmtc.ca.

HERMANOS

RESTAURANT & WINE BAR

JOIN US FOR DINNER
BEFORE THE SHOW!

MTC SEASON TICKET HOLDERS RECEIVE 15% OFF

179 BANNATYNE AVE | WINNIPEG, MANITOBA R3B 0R5

For reservations book at Hermanos.ca or call 204-219-0779

Louisa May Alcott

Famed author Louisa May Alcott created colourful relatable characters in 19th century novels. Her work introduced readers to educated strong female heroines and her writing style greatly impacted American literature.

Louisa was born on November 29, 1832 in Philadelphia, Pennsylvania. Louisa's parents were a part of the popular transcendentalist movement. Their religious and political beliefs inspired Louisa as a child. Her father, Bronson Alcott, was a popular educator who believed that children should enjoy learning. Therefore, at an early age, she took to reading and writing. While most of her schooling came from her parents, she also studied under famed philosopher Henry David Thoreau and popular authors Ralph Waldo Emerson and Nathaniel Hawthorne. Much like her novel *Little Women*, Louisa was one of four daughters and she remained close with her sisters throughout her life. Many times, Louisa's family suffered from financial woes, forcing her to attend school irregularly. She took many jobs to help alleviate financial struggles, working as a teacher and washing laundry. She turned to writing for both emotional and financial support.

Her first poem, "Sunlight," was published in a magazine under a pseudonym. Her first book, a compilation of short stories, was published in 1854. When the Civil War started in 1861, Louisa served as a nurse in a Union hospital. Unfortunately, in the middle of her assignment she contracted typhoid fever. Her experience in the hospital as a patient and a nurse, inspired the novel *Hospital Sketches*. After the war, Louisa published several

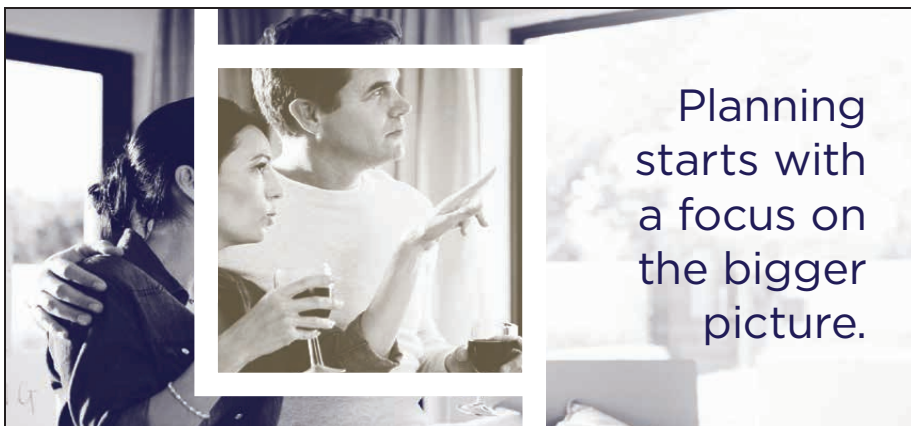
other works and gained a following. She also released many of her earlier works under the name, A.M. Barnard.

During this time, one of Louisa's publishers asked her to write a novel for young women. To do so, she simply reflected back on her childhood with her sisters. In 1868, Louisa published her most popular work, *Little Women*. The novel was published in a series of short stories, but was eventually compiled into one book. *Little Women* was an instant success and the book cemented Louisa as one of the foremost novelists of the 19th and early 20th century. In 1870, with one successful book, Louisa moved to Europe with her sister May. There she published, another classic, *Little Men*. She also joined the women's suffrage movement. Throughout her life, she would contribute to several publications that promoted women's rights. She was also the first woman to register to vote in Concord, Connecticut.

Louisa never married nor had any children, however, when her sister died, she adopted her niece. Afterwards she moved to Boston and continued publishing more works that followed the characters from *Little Women*. Louisa suffered from bouts of illness throughout her life. She attributed her poor health to mercury poisoning which she believed she contracted while working as a nurse during the Civil War. In 1888, she died at the age of 56 in Boston. Today, readers continue to enjoy Louisa's writings and her novels still appear on bestseller lists throughout the world. ●

Taylor McCaffrey is Proud to Support Royal MTC

TAYLOR
McCAFFREY
LAWYERS



Planning
starts with
a focus on
the bigger
picture.

At Lawton Partners, we guide our clients with insight and experience.
We believe it's important to be leaders in our community as well as in business.

You belong in the company of leaders.
lawtonpartners.ca



Women in the Civil War

In the years before the Civil War, the lives of American women were shaped by a set of ideals that historians call “the Cult of True Womanhood.” As men’s work moved away from the home and into shops, offices and factories, the household became a new kind of place: a private, feminized domestic sphere, a “haven in a heartless world.” “True women” devoted their lives to creating a clean, comfortable, nurturing home for their husbands and children.

During the Civil War, however, American women turned their attention to the world outside the home. Thousands of women in the North and South joined volunteer brigades and signed up to work as nurses. It was the first time in American history that women played a significant role in a war effort. By the end of the war, these experiences had expanded many Americans’ definitions of “true womanhood.”

The Civil War was America’s bloodiest and most divisive conflict, pitting the Union Army against the Confederate States of America. The war resulted in the deaths of more than 620,000 people, with millions more injured and the South left in ruins. ●

SOURCE: HISTORY.COM

Class Structure

The class structure of this era closely resembled that of England, as the founding families of the region were descended from English landowners. The upper class was, however, less exclusive as the manufacturing industry took off, with folks who found wealth through business often marrying into upper-class families. They were still expected to uphold proper behaviours, morals and exclusivity in social engagements, keeping distance from the lower classes. They further kept their distinction through exclusive schools and clubs. Most in this region were aligned with some iteration of Unitarian or Episcopalian Protestantism. This was particularly pronounced in Boston, whose upper class is referred to in historical literature as the “Boston Brahmins.” ●

SOURCE: ENRICHMENT GUIDE BY TALA GAMMON

SYNOPSIS – Jo March was born to be a writer. From the plays she creates with her sisters, Meg, Beth and Amy, to the stories she submits to the local paper, her dream is insatiable. But coming of age during the American Civil War has brought new challenges. With economic constraints, Marmee works tirelessly to ensure her girls are provided for, but Aunt March says the only path is to marry well. While Jo befriends Laurie, the well-to-do boy next door, her dream to defy expectations comes under pressure. As the girls grow into women, their journeys take them to places they never thought they would go. For Jo, an adventure to New York and a new friendship with the insightful Professor Bhaer may help her achieve her biggest dream yet, having her own novel published. ●



SHOP ONLINE

—
**click & collect
or delivery**



LIQUOR MART



LiquorMarts.ca

18+ ENJOY RESPONSIBLY

PRESENTS

Little Women

Based on the novels *Little Women* and *Good Wives* by Louisa May Alcott
Adapted for the stage by Jordi Mand

November 21 – December 14, 2024

PREVIEW November 20

Director Katie German
Set Designer Jawon Kang**
Costume Designer Joseph Abetria†
Lighting Designer Hugh Conacher**
Sound Designer Ashley Au**
Choreographer Rachael McLaren
Intimacy Director Aria Evans
Fight Director Shannon Guile
Dialect Consultant Tom Soares†
Assistant Director Rayna Masterton
Assistant Lighting Designer Anika Binding†
Apprentice Director Rochelle Kives*
Apprentice Costume Designer Sarah Struthers*
Stage Manager Karyn Kumhyr
Assistant Stage Manager Ridge Romanishen
Apprentice Stage Manager Carolin Schroeder†

SETTING: 1860s Massachusetts during the American Civil War.

Little Women is performed with one intermission.

Little Women is staged by arrangement with Ian Arnold, Catalyst TCM Inc.
www.catalysttcm.com

Little Women was originally commissioned by the Stratford Festival, Ontario, Canada.
The premiere production opened on July 2, 2022 at the Avon Theatre, Stratford Festival.
Antoni Cimolino, Artistic Director and Anita Gaffney, Executive Director.

Thank you to longtime subscribers, Denis and Barb Fletcher, for donating their 100-year-old piano to *Little Women*

Thank you to Christa Hoefling and Theatre Calgary.

Production photography by Leif Norman.

**Indicated designers on this production are represented by the Associated Designers of Canada, IATSE Local ADC659

*Position funded through the Jean Murray - Moray Sinclair Theatre Apprenticeship Program

†Past Jean Murray - Moray Sinclair apprenticeship or scholarship recipient

Little Women

THE CAST (IN ALPHABETICAL ORDER)

Annie Moffat..... Calla Adubofour-Poku
Professor Friedrich Bhaer / Mr. Robert March..... Rodrigo Beilfuss†
Josephine 'Jo' March..... Bailey Chin
Margaret 'Meg' March..... Ava Darrach-Gagnon
Elizabeth 'Beth' March..... Julia Davis
Theodore 'Laurie' Laurence..... Matthew Fletcher†
Amy March..... Megan Fry
Edward / Young Man / Dr. Bangs Tom Keenan
Sallie Gardiner Melissa Langdon
Mr. John Brooke / Frank Simon Miron†
Aunt Mary March..... Tracey Nepinak
Mr. James Laurence / Mr. Dashwood..... Alex Poch Goldin
Mrs. Margaret 'Marmee' March Jan Skene
Mrs. Kirke..... Melanie Whyte

UNDERSTUDIES

Understudies never substitute for listed performers unless a specific announcement is made at the time of their appearance.

Beth, Amy Calla Adubofour-Poku
Sallie Gardiner Julia Davis
Edward..... Matthew Fletcher†
Annie Moffat..... Megan Fry
Laurie, Professor Friedrich Bhaer / Mr. Robert March,
Mr. John Brooke / Frank Tom Keenan
Jo, Meg Melissa Langdon
Mrs. Kirke..... Tracey Nepinak
Dr. Bangs..... Alex Poch Goldin
Marmee, Aunt Mary March Melanie Whyte

UNDERSTUDIES FUNDED BY



*Position funded through the Jean Murray - Moray Sinclair Theatre Apprenticeship Program

†Past Jean Murray - Moray Sinclair apprenticeship or scholarship recipient

LITTLE WOMEN



A YEAR WITH FROG AND TOAD

DECEMBER 6-29

MUSIC BY **ROBERT REALE** BOOKS AND LYRICS BY **WILLIE REALE**

BASED ON THE BOOKS OF **ARNOLD LOBEL**

ORIGINALLY PRESENTED ON BROADWAY BY **BOB BOYETT, ADRIANNE LOBEL, MICHAEL GARDNER, LAWRENCE HOROWITZ AND ROY FURMAN**

WORLD PREMIERE AT THE CHILDREN'S THEATRE COMPANY MINNEAPOLIS, MINNESOTA

Best friends Frog and Toad plant gardens, swim, rake leaves, go sledding and learn life lessons after waking from winter. The delightful amphibians as they sing their way through the seasons, sharing a story of enduring friendship.

SPONSORED BY

GAIL ASPER
FAMILY FOUNDATION

WINNIPEG
RICHARDSON
INTERNATIONAL AIRPORT

PRODUCTION BENEFACTOR

Rick Lee & Laurie
Shapiro

TICKETS by phone
204.942.8898 or
online **mtyp.ca**

TICKETS \$ **24**
START AT
PREMIUM SEATING AVAILABLE

Katie German and Matthew Armet in *A Year with Frog and Toad* (2019), sets, props and costumes: Jackie Chai, uniforms: Dean Cowleson, photo: Leif Norman.



Calla
Adubofour-Poku
Annie Moffat
Understudy: Beth, Amy

ROYAL MTC *The Comeback.*

OTHER THEATRE *Owl Calling* (Root Sky Theatre); *Flight of Fancy*, *Middletown*, *Metamorphoses*, *Twelfth Night* (NTS); *Romeo and Juliet* (Exit Stage Left); *Robin Hood*, *Argonautika*, *Orpheus and Eurydice* (Second Story Theatre).

TRAINING 2023 graduate from the National Theatre School of Canada's acting program.

ET CETERA Calla is eternally grateful to Anaka, Justine, Chirs, Adrian and Theo and thanks them all for their constant love and support.



Rodrigo Beilfuss
Professor Friedrich
Bhaer / Mr. Robert
March

ROYAL MTC Actor: *The Three Musketeers*. Assistant Director: *Private Lives*.

OTHER THEATRE Rodrigo is an actor and theatre director, and the Artistic Director of Shakespeare in the Ruins (SIR). Recent credits include directing *Iago Speaks*, *A Midsummer Night's Dream*, *Pandora* and *The Dark Lady* (SIR); and *The Year of Magical Thinking* (PTE). Rodrigo spent four seasons at the Stratford Festival, acting in dozens of productions.

FILM/TV *The Santa Summit*, *Nobody 2*, *Snowkissed*, *Intersection*, *Naval Gazing*.

TRAINING Birmingham Conservatory (Stratford); MA in Classical Acting from LAMDA (UK); BA (Honours) from the University of Winnipeg; Michael Langham Workshop (Stratford).

ET CETERA Love to Liz, Zeke and Indira; thanks for teaching me about the important stuff.



Real food from the land...

At Peasant Cookery we have a passion for transforming fresh ingredients into original and trend-forward cuisines. Our rustic, seasonally inspired menu, famous housemade charcuterie, combined with exceptional service and inviting bistro atmosphere are an experience not to be missed.



100-283 Bannatyne
204.989.7700



RESTAURANT AND WINE BAR

A Japanese - style Steakhouse with a perfectly paired wine list. Located in a modern space on the corner of Portage and Main.

204.938.8696 | 529uptownwpg.com

Hours: Monday – Friday, 11:30 a.m. – 8 p.m.

Complimentary Parking after 5 p.m.



LITTLE WOMEN



Bailey Chin

Josephine 'Jo' March

ROYAL MTC *Sexual Misconduct of the Middle Classes, Network* (with Citadel).

OTHER THEATRE *Feast* (PTE); *(ART)ist* (Winnipeg Fringe Theatre Festival).

TRAINING University of Manitoba - Black Hole Theatre.

ET CETERA Thank you to my friends and family for their unrelenting support, to the incredible cast and crew of this show, and to Katie, Jordi and Royal MTC for giving me the opportunity to bring one of my favourite characters to life. It means the world to me to be here with you all.



Ava Darrach-Gagnon

Margaret 'Meg' March

ROYAL MTC *Sense and Sensibility, Unnecessary Farce.*

OTHER THEATRE *The Winter's Tale/ Le conte d'hiver* (SIR/Théâtre Cercle Molière); *Come Wind, Come Rain* (The Free Theatre - Winnipeg); *Joe Job* (Imaginary Productions); *Revenge of the Meek* (Thinlizotte Productions); *God: A Play in One Act* (1042 Productions); *Pizza Man* (Coffee Guy Productions).

FILM/TV *Autumn at Apple Hill, Wintertide, 'Tis the Season to be Merry, A House on Fire, Burden of Truth, Our Christmas Love Song, Always and Forever Christmas, Washed Away, Journey Back to Christmas, Escape or Die.*

TRAINING Graduate of the University of Winnipeg's Acting Honours Program.

ET CETERA All my love and thanks to the most supportive of family and friends.

PRAGUE

Unleash Your Wanderlust

Start planning
your next trip

**BON
ADVENTURE**
TRAVEL

bonadventuretravel.ca

204-488-6653

428 Academy Road,
Winnipeg, MB R3N 0C3



Great theatre lives here.



BMO



We are pleased to support the **Royal Manitoba Theatre Centre** and the artists who have been captivating audiences with exciting, innovative, and entertaining productions.

BMO is proud to be the 2024/25 **Tom Hendry Warehouse** Season Sponsor.

Photo Credits: Jerry Grajewski

LITTLE WOMEN



Julia Davis

Elizabeth 'Beth'
March

Understudy:
Sallie Gardiner

ROYAL MTC *The Sound of Music* (with Citadel).

OTHER THEATRE *The Wizard of Oz*, *The Little Mermaid* (Rainbow); *Miss Shakespeare* (WST/Rainbow); *Frozen River/Nikwatin Sipi* (MTYP); *The Yeomen of the Guard* (G&S Society of Winnipeg).

FILM/TV *Law & Order Toronto: Criminal Intent* (CityTV); *Acting Good* (CTV/APTN); *Greenhill* (Koj-B Films); *Burden of Truth* (Eagle Vision); *SkyMed* (Paramount+); *Finality of Dusk* (Eagle Vision).

TRAINING Graduate of Desautels Faculty of Music and The Village Conservatory for Music Theatre.

ET CETERA Julia would like to thank her family and friends for their never-ending support and love!



Matthew Fletcher

Theodore 'Laurie'
Laurence

Understudy: Edward

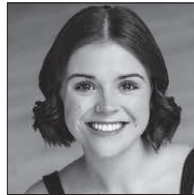
ROYAL MTC *Beautiful: The Carole King Musical* (with Segal), *Into the Woods*, *Shakespeare in Love* (with Citadel).

OTHER THEATRE *Where You Are* (Hudson Village Theatre); *Antigone* (Sick + Twisted/AA Battery); *RENT*, *The Hockey Sweater*, *Les Misérables* (Rainbow); *Grease* (Winter Garden); *Million Dollar Quartet* (Port Hope); *James and the Giant Peach* (MTYP); *Kiss of the Spider Woman*, *A Man of No Importance* (Dry Cold); *Spring Awakening* (Griffin); *Heathers* (WST); *Les Misérables* (Drayton); *Crazy for You* (TBTB).

FILM/TV *Champions*, *The Porter*, *The Pinkertons*, *Triple Sensation*.

TRAINING Northwestern University, Shakespeare & Co, Soulpepper Training Room, Rainbow Stage Conservatory.

ET CETERA Much love to Sara!



Megan Fry

Amy March

Understudy: Annie Moffat

ROYAL MTC First appearance.

OTHER THEATRE *Mary Poppins*, *The Little Mermaid*, *RENT*, *The Wizard of Oz* (Rainbow); *The Prom* (Dry Cold); *FAME the Musical* (WST); *Inhibition Exhibition*, *Twelfth Night* (ViC).

TRAINING Village Conservatory, Royal Winnipeg Ballet.

ET CETERA To all the women in my life who have taught me grace, power and resilience. And to my mama, dreams really do come true.

**Warm Hands,
Warm Hearts**

Inspired by the March family, Royal MTC is asking for donations of winter clothing to help keep our community warm this winter. We're accepting donations for **RaY, Ndinawemaaganag Endaawaad Inc., and North End Women's Centre** until Dec 14. Visit RoyalMTC.ca for a list of most-needed items.

THANK YOU!

Available in the
THEATRE
and
served at
Torque taproom,
restaurants
and Liquor Marts.

TORQUE BREWING

CRAFTING TRUST IN EVERY BREW.



Cozy & Vibrant

Join us for a great evening experience, located in Winnipeg's Exchange District.



Weekly Live Music



Kevin's
Bistro

141 Bannatyne Ave.
204.221.5028
kevinsbistro.ca

Call us or
book through
opentable.com

LITTLE WOMEN



Tom Keenan

Edward / Young Man / Dr. Bangs; Understudy: Laurie, Professor Friedrich Bhaer / Mr. Robert March, Mr. John Brooke / Frank

ROYAL MTC Selected: *among men* (with TPM), *Bang Bang* (with Belfry), *The Cottage*, *Sense and Sensibility*, *The Humans*, *Shakespeare in Love* (with Citadel), *Sarah Ballenden*, *Hand to God*, *Unnecessary Farce*, *The Seagull*, *Gone with the Wind*, *Mrs. Warren's Profession*, *A Christmas Carol*.

OTHER THEATRE Selected: *Goodnight Desdemona...*, *White Rabbit Red Rabbit*, *Beethoven Blatz* (TPM); *Twelfth Night*, *Much Ado*, *The Winter's Tale*, *The Comedy of Errors*, *R & J*, *Henry IV* (SIR); *Snow White*, *The Velveteen Rabbit* (MTYP); *By Grand Central Station* (PTE); *Hedda Gabler* (Echo Theatre); *Am I Not King?*, *Three Sisters* (zone41); *Dear Johnny Deere* (Persephone); *Ring of Fire* (Rainbow).

FILM/TV Selected: *Don't Even* (Crave/APTN); *Melaleuca* (4Head); *First Person Shooter* (Cartel/Tubi); several Hallmarks; *Burden of Truth* (CBC); *Channel Zero* (NBC/Universal); *Night Hunter* (Palmstar); *The Pinkertons* (Buffalo Gal); *House Party* (Comedy); *Something Beneath* (Peace Arch); *The Crooked E* (CBS).

ET CETERA Find his music at tommydouglasskeenan.com.



Melissa Langdon

Sallie Gardiner Understudy: Jo, Meg

ROYAL MTC Actor: *The Three Musketeers*; Artistic Associate; Assistant Director: *The Mountaintop*, *Trouble in Mind* (with Citadel), *Orlando*; 2020/21 National Mentorship Program; Artistic Coordinator: *Tiny Plays*, *Big Ideas*.

OTHER THEATRE *A Midsummer Night's Dream*, *Twelfth Night*, *Hamlet* (SIR); *Voice* (PTE); *Spelling 2-5-5* (MTYP); *School Girls*; *Or The African Mean Girls Play* (Obsidian/Nightwood Theatre); *Blink* (One Trunk/W&T); *Home 2.0*, *The Game*, *New Beginnings* (Sarasvati); *O(phelia)* (ShakespeareFest); *Animosity* (Winnipeg Fringe Theatre Festival); *Time and the Conways*, *Concord Floral*, *Rosencrantz and Guildenstern are Dead* (U of W).

FILM *Macbeth* (SIR/Blackfriar).

TRAINING Bachelor of Arts Honours in Theatre and Film Acting from the University of Winnipeg.

ET CETERA Dora Award: Outstanding Production and Toronto Theatre Critics' Choice Award: Outstanding Production of a Play (*School Girls*), Bethia Henry Memorial Scholarship in Theatre and Drama, Reg Skene Emerging Artist Award. Love you Matt ♥

ENRICH YOUR EXPERIENCE!

Do you want to delve deeper into the themes of the play? For every show we release an enrichment guide with help from experts and educators. This guide offers background context, resources to explore and discussion questions to keep the conversation going. Read them at royalmtc.ca/enrichmentguides.



We're proud to
support **Royal MTC's**
deep commitment to
bringing Manitobans
exhilarating theatre.

FillmoreRiley

FillmoreRiley.com

Fillmore Riley LLP

Lawyers and Trademark Agents

LITTLE WOMEN



Simon Miron

*Mr. John Brooke /
Frank*

ROYAL MTC Director: *The Piano Teacher, The (Post) Mistress*. Assistant Director: *The Cottage*. Actor: *Orlando, The Dresser*.

OTHER THEATRE Director: *Li Keur: Riel's Heart of the North* (MB Opera); *The Seat Next to the King, Whatever Happens After, Freestyle Fantastique, Songs for a New World, The Last Five Years* (Winnipeg Fringe); *Pippin* (ViC/WST); *American Idiot, Young Frankenstein* (WST); *The Last 48* (ArtLaunch); *Lucky Stiff* (MDA); *7 Stories* (TBTR).

TRAINING/TEACHING Founding member of the Village Conservatory for Music Theatre (ViC). Simon holds a Masters from the Royal Conservatoire of Scotland, trained with Peter Hinton at the Stratford Festival and is a graduate of the theatre arts program at MacEwan University.

ET CETERA Simon is a francophone Métis artist who self identifies as two spirited. They enjoy creating multidisciplinary art through collaboration and self-exploration.



Tracey Nepinak

*Aunt Mary March
Understudy: Mrs. Kirke*


ROYAL MTC Acting: *The Comeback, The Secret to Good Tea, Sarah Ballenden, Good People, The History of Manitoba from the Beginning of Time to the Present in 45 Minutes*. Directing: *The Rez Sisters*. Playwriting: *Redemption Tax* (2020/21 Pimootayowin Creators Circle).

OTHER THEATRE Tracey has worked professionally, in theatres across Canada, since 1993. Recent acting: *Philomena in The Rez Sisters* (Stratford); *Rae Anna in Honour Beat* (world premiere, Theatre Calgary); *Crazy Bone in A Short History of Crazy Bone* (world premiere, TPM); *Cleopatra in Antony & Cleopatra* (SIR).

TV Recent acting: *Hilda in Acting Good* (Big Makwa).

TRAINING Tracey graduated from the University of Winnipeg with a B.A. Honours in Theatre.

ET CETERA She is a proud member of Peguis First Nation, here on Treaty One Territory. Tracey is "over-the-moon" excited to be Milo's "kookum"!



ROYAL
MTC
MANITOBA THEATRE CENTRE

THEATRE FOR FANS UNDER 30

Looking for a great night out that's easy on your wallet?
Theatre Under 30 members, aged 18 - 29, have exclusive
access to world-class theatre for just \$20 a seat!

SIGN UP TODAY AT [ROYALMTC.CA/UNDER30](https://royalmtc.ca/under30)

FOR MORE INFORMATION, PLEASE CONTACT
KSENIA BRODA-MILIAN AT [UNDER30@ROYALMTC.CA](mailto:under30@royalmtc.ca)

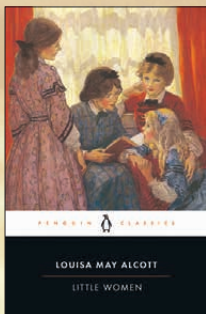
VANESSA LETICIA JETTÉ & HONEY PHAM IN *THE PLAY THAT GOES WRONG*. PHOTO BY NANC PRICE.



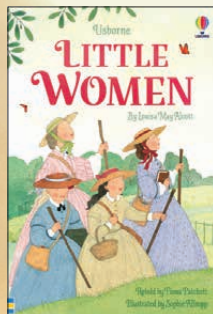
**M McNALLY
ROBINSON**

Recommended Reading

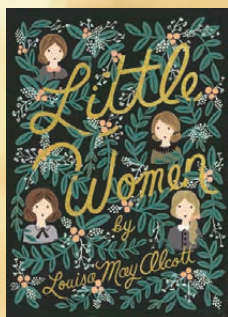
inspired by *Little Women*



Little Women
by Louisa May Alcott



Short Classics: Little Women
retold by Mary Sebag-Montefiore
AGES 3–5



Little Women
by Louisa May Alcott
YOUNG ADULT



McNALLY ROBINSON BOOKSELLERS
1120 Grant Avenue · The Forks · mcnallyrobinson.com

WHEN YOU SUPPORT US, YOU SUPPORT OUR COMMUNITY



**M McNALLY
ROBINSON**



Alex Poch Goldin

Mr. James Laurence /
Mr. Dashwood
Understudy: Dr. Bangs

ROYAL MTC *Indecent* (upcoming), Henry in *The Lehman Trilogy*, *Bang Bang* (Evie Award), *Network*, *Trouble in Mind* (with Citadel), *King Lear*, *Scorched*, *My Name is Asher Lev* (with Segal Centre - META Award).

OTHER THEATRE Emanuel in *The Lehman Trilogy* (TC); *Prayer for the French Republic* (Segal); *Ma Rainey's Black Bottom*, *The Dybbuk*, *Incident at Vichy* (Soulpepper - Dora Award); *Oslo*, *Disgraced* (Mirvish); *Angels in America* (year-long run), *Intimate Apparel*, *The Comedy of Errors*, *The Tempest* (Canadian Stage); *Wit* (Jessie nomination - VP); *Belle* (NAC/Factory); *Amadeus*, *Possible Worlds* (TIFT/Munich); *Superior Donuts* (Coal Mine). Playwriting: *Edenbridge*, *The Trial of William Shakespeare*, *Cringeworthy* (Siminovitch nomination); *This Hotel* (Dora nomination).

FILM/TV *Little Bird*, *The Porter*, *Rich Kid*, *Suits*, *Burden of Truth*, *Never Been Chris'd*, *Murdoch Mysteries*, *Cardinal*, *Flashpoint*.

ET CETERA Love to Chloe Babette!
Coaching at www.alexpochgoldin.com.



Jan Skene

Mrs. Margaret
'Marmee' March

ROYAL MTC *The Sound of Music* (with Citadel), *It's a Wonderful Life: A Radio Play*, *The Diary of Anne Frank*, *Les Belles-Soeurs*, *A Christmas Carol*, *Harvey*.

OTHER THEATRE Selected: *A Year with Frog and Toad* (MTYP/Citadel); *Peter Pan*, *See Saw* (MTYP); *The Brink*, *Happy Place*

(PTE); *White Rabbit Red Rabbit* (TPM); *Nine*, *A Little Night Music* (Dry Cold); *Footloose*, *The King and I*, *Big* (Rainbow).

FILM/TV Over 40 credits in film and TV including *Fred Penner's Place* (CBC); *Tipi Tales* (YTV/APTN); and most recently - *Love in Design* (Hallmark); *Ordinary Angels* (Lionsgate); *A Brush with Christmas Romance*, *Christmas Commission* (GAF).

ET CETERA Jan manages, and co-founded, Skene Stunts with her husband Rick and is proud mom of Daniel and Sean Skene who are making their mark in Canada's film industry.



Melanie Whyte

Mrs. Kirke
Understudy: Marmee,
Aunt Mary March

ROYAL MTC *The Comeback*, *Into the Woods*, *The Audience* (with Mirvish).

OTHER THEATRE Selected: *Narnia*, *Spelling 2-5-5* (MTYP); *Feast*, *Fly Me to the Moon* (PTE); *The Prom*, *The Light in the Piazza*, *A Man of No Importance*, *Into the Woods* (Dry Cold); *Much Ado About Nothing*, *Hamlet*, *Timon of Athens* (SIR); *Mary Poppins*, *Cinderella*, *Sister Act*, *Annie*, *The Full Monty* (Rainbow); *The Game* (Sarasvati); *Sunday in the Park with George* (Gallery Works).

FILM/TV *Larry Saves the Healthcare System* (Research MB/Tripwire); *Burden of Truth* (CBC/Eagle Vision).

TRAINING BMus (UBC); Film and Theatre School Vancouver.

ET CETERA Melanie teaches singing in Winnipeg and online and is a member of the Fu Fu Chi Chi Choir. Love to my own dear family.

PROTECT YOUR TOMORROW!



JEM
Insurance



WWW.JEMINSURANCE.CA

LITTLE WOMEN



Jordi Mand
Stage Adaptation

ROYAL MTC First engagement.

OTHER THEATRE *Between The Sheets* (Nightwood Theatre); *Caught* (Theatre Passe Muraille); *This Will Be Excellent* (Carousel Players); *Brontë: The World Without*, *Little Women* (Stratford); *In Seven Days* (Grand/HGJT).

TV *Cardinal* seen on CTV/Bell Media.

TRAINING Graduate of the Canadian Film Centre Prime Time TV Program, National Theatre School of Canada's Acting Program.

ET CETERA Much gratitude to the entire creative and administrative team at Royal MTC for continuing to bring this story to the stage.



Katie German
Director

ROYAL MTC Actor: *The Sound of Music* (with Citadel), *Into the Woods*, *The Rez Sisters*. Assistant Director: Pimootayowin Creators Circle 2020-2023, *The (Post) Mistress*. Mentee: 2020/21 National Mentorship Program.

OTHER THEATRE *This is How We Got Here* (Persephone); *A Pickle* (WJT); *Frozen River Nikwatin Sîpiy* National Tour (MTYP); *Embodying Power and Place* (Native Earth/Nightwood/Theatre, New Harlem Productions); *Winn Nipi - River City Stories* (PTE); *The Hockey Sweater*, *Breaking Up Is Hard To Do* (Rainbow Stage); *A Year with Frog and Toad*, *Seussical* (MTYP).

TV *Wolf Joe* (Media RendezVous/Big Jump Media Inc.); *Stand!* (Frantic Films); *Curse of Chucky* (Universal 1440 Entertainment).

ET CETERA Katie is a mom to two creative kids who challenge and encourage her to be a better human and is also the owner and director of Junior Musical Theatre Company (JMTC). Miigwetch.



Jawon Kang
Set Designer

ROYAL MTC First engagement.

OTHER THEATRE Set Designer: *Trident Moon* - upcoming (Crow's/NAC); *This Is How We Got Here* (Persephone); *Come Home - The Legend of Daddy Hall* (Tarragon); *Redbone Coonhound* (Tarragon/Imago); *Fairview* (CS). Set & Costume Designer: *Doubt: A Parable* (Thousand Islands Playhouse). Costume Designer: *A Poem for Rabia* (Tarragon); *Armadillos* (Factory). Associate Set Designer: *Death and the King's Horseman* (Stratford).

TV Assistant Set & Costume Designer: *21 Black Futures* (CBC Gem).

TRAINING A graduate from the National Theatre School of Canada and a member of Associated Designers of Canada.

ET CETERA Jawon is a recipient of the Montreal English Theatre Award (META) for Emerging Artist - set design for *Redbone Coonhound* (Tarragon/Imago). jawonkang.myportfolio.com

We believe that when people participate in their community, good things can happen.

Proud to support The Royal Manitoba Theatre Centre and the Pimootayowin Creators Circle.

As part of our goal to help people feel a sense of belonging in their communities, TD supports arts and culture events, initiatives, and organizations across North America that amplify diverse voices.

Learn more at
td.com/artsandculture

**TD READY
COMMITMENT**

* The TD logo and other TD trademarks are the property of The Toronto-Dominion Bank or its subsidiaries.



24
25
SEASON

DECEMBER 20-28
CENTENNIAL CONCERT HALL

RWB

Nutcracker

Tickets \$39+ – Only at rwb.org

PRESENTING
SPONSOR



Canada Council
for the Arts

Conseil des Arts
du Canada

MANITOBA
ARTS COUNCIL



CONSEIL DES ARTS
DU MANITOBA



WINNIPEG COUNCIL FOR THE ARTS
WINNIPEG

THE
WINNIPEG
FOUNDATION



PHOTO PETER LANCKSWEERT AND LIAM SAITO; BY DANIEL CRUMP

LITTLE WOMEN



Joseph Abetria
Costume Designer

ROYAL MTC Costume Designer: *The Play That Goes Wrong* (with Citadel/TC), *The Comeback*, *The Piano Teacher*, *Calpurnia* (with NAC/Black Theatre Workshop); *Tiny Plays*, *Big Ideas*; *Bang Bang* (with Belfry), *Last Train to Nibroc* (Regional Tour). Associate Costume Designer: *Into the Woods*. Apprentice Costume Designer: *Billy Elliot the Musical*. 2020/21 National Mentorship Program.

OTHER THEATRE (selected) Costume Designer: *Charlie and the Chocolate Factory*, *Grand Ghost* (Grand); *Snow White*, *Spelling 2-5-5* (MTYP); *Volare*, *Space Girl*, *Voice* (PTE); *Plé* (Plé Collective presented by MTYP); *Women of the Fur Trade* (Vault Projects); *Mary's Wedding*, *Iceland* (TPM). Production Designer: *The Player King* (SIR); *The Game*, *Two Indians* (Sarasvati). Assistant Costume Designer: *Othello*, *The Neverending Story*, *The Rocky Horror Show*, *Romeo and Juliet* (Stratford).

TRAINING University of Winnipeg.



Hugh Conacher
Lighting Designer

ROYAL MTC (selected) Lighting & Video Designer: *The Lehman Trilogy*, *The Mountaintop*, *Vietgone*, *Venus in Fur*. Video Designer: *Network* (with Citadel). Lighting Designer: *The Recipe* (with TPM), *among men* (with TPM), *Beautiful: The Carole King Musical* (with Segal), *The Secret to Good Tea*, *Into the Woods*, *New, Orlando*, *Women of the Fur Trade*, *Fun Home*, *The Color Purple* (with Citadel), *Kill Me Now* (with NAC), *Seminar* (with Mirvish), *Dry Lips Oughta Move to Kapuskasing* and many other productions since the '80s.

OTHER THEATRE Hugh collaborates with choreographers, visual artists and dance and theatre companies worldwide.

ET CETERA Hugh enjoys working beyond the constraints of traditional lighting design using various forms of interactive media, video and photography. His photographic work resides in private collections and has been published worldwide. Hugh is a member of the Associated Designers of Canada and L'Association des professionnels des arts de la scène du Québec. www.pellucid.me.



**With every
community,
we redefine
what's possible**

Visit stantec.com to learn more.



ON AN ISLAND IN THE NORTH ATLANTIC
WHERE THE WILD INVITES YOU TO WANDER

ENTANGLED WITH NATURE
ROOTED IN COMMUNITY



BOOK YOUR STAY

fogo island inn

Newfoundland, Canada



Ashley Au
Sound Designer

ROYAL MTC *The Recipe* (with TPM), *The Lehman Trilogy*, *among men* (with TPM), *Burning Mom*, *Sexual Misconduct of the Middle Classes*, *Trouble in Mind*, *Orlando*. 2022/23 National Mentorship Program.

OTHER THEATRE *The Year of Magical Thinking* (PTE); 2024 ThisGen Fellow (Why Not Theatre).

TRAINING B.Mus (Jazz Performance) Brandon University, School of Music.

ET CETERA Ashley Au (she/they) is a Winnipeg-based bassist, composer, sound artist, arranger and queer creative. A multifaceted musician, Ashley specializes in the upright and electric basses – performing, touring and recording extensively for the last 15 years. Current and past projects include work with Weakerthans frontman John K. Samson; composer/trumpeter Chuck Copenace; and Polaris Prize-nominated hip-hop outfit Super Duty Tough Work. As a composer, Ashley has had work commissioned and performed nationally and internationally. She has most recently had work premiere at the Senate of Canada in Ottawa as well as had work exhibited in London, UK. She is the Artistic Director for Cluster: New Music + Integrated Arts Festival.



Rachael McLaren
Choreographer

ROYAL MTC First engagement.

OTHER THEATRE Choreographer: *Miss Shakespeare* (WST). Actor: *FAME the Musical* (WST), *Mamma Mia!* (Mirvish).

FILM/TV Various productions as an actor and stunt performer include: *The Spencer Sisters*, *Ordinary Angels*, *Violent Night*, *Dark Harvest*. As a dancer, she appears in the documentary *Ailey* directed by Jamila Wignot, *Lincoln Center at the Movies: Alvin Ailey American Dance Theater* and season 7 of *So You Think You Can Dance* as a guest artist.

ET CETERA Rachael was a Principal Dance artist for the Alvin Ailey American Dance Theater for 11 seasons and made a special guest appearance with the Royal Ballet in London, England. Love to my Husband, three little ones and my mom.



Aria Evans
Intimacy Director

ROYAL MTC *The Recipe* (with TPM).

OTHER THEATRE Choreographer & Intimacy Director: *Aportia Chryptych: A Black Opera for Portia White* (COC); *Every Little Nookie* (Stratford). Intimacy Director: *Richard II* (Stratford). Assistant Director & Intimacy Director: *Queen Goneril* (Soulpepper).

FILM/TV Intimacy Coordinator: *When Stars Align* (Lifetime); *We Three Queens* (OutTV); *Really Happy Someday* (Spindle Films); *Sworn Justice: Taken Before Christmas* (Black Entertainment Television).

TEACHING Assistant Professor in the Theatre and Film department at the University of Winnipeg.

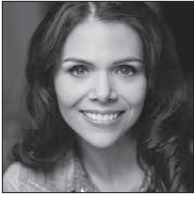


GLOBAL DRAIN
TECHNOLOGIES

**Smart, Simple, Safe
Drainage Solutions**



LITTLE WOMEN



Shannon Guile

Fight Director

ROYAL MTC Actor: *The Three Musketeers*, *The History of Manitoba...in 45 Minutes*. Director: *A Piece of Me* (Tiny Plays, Big Ideas).

OTHER THEATRE (Selected) Actor: *Plé* (MTYP); *The Miser of Middlegate* (TPM). Director: *Can Loud and Clear* (100 Decibels). Assistant Director: *Tribes* (WJT).

FILM/TV (Selected) Actor: *Normal*, *Winner*, *The Secret Ingredient*, *Percy vs Goliath*. Stunts: *Nobody 2*, *The Santa Summit*, *Champions*, *Violent Night*, *Safehaven*.

TEACHING Shannon teaches Mime & Improv. and Stage Combat at the U of W.

ET CETERA Shannon is a founder of the three-time Canadian Comedy Award-nominated sketch comedy troupe Hot Thespian Action and Deaf mime troupe 100 Decibels. She would like to thank Ross and Beckett for their undying support, love and random dance breaks when mommy needs it.



Tom Soares

Dialect Consultant

ROYAL MTC Coaching: *The Recipe* (with TPM), *among men* (with TPM), *Trouble in Mind*, *The Rez Sisters*, *Jane Eyre*. Acting: *Much Ado About Nothing*, *Richard III*.

OTHER THEATRE Coaching: *The Winter's Tale*, *Hamlet*, *Richard III* (SIR); *Iceland*, *Mary's Wedding* (TPM); *Little Thing*, *Big Thing* (PTE); *Shrek* (Rainbow). Acting: *A Gentleman's Guide to Love and Murder*, *Little Women*, *Urinetown* (Dry Cold);

Hamlet (Bunchback'd Toads); *Passion* (Red Hen Productions); *Annie* (Rainbow); *The Odyssey* (SIR); *Troilus and Cressida*, *Measure for Measure* (Tom-Tom Theatre).

FILM/TV Coaching: *The Porter*, *Esther*, *Incident in a Ghostland*. Acting: *The Spencer Sisters*, *Love in the Alps*, *Burden of Truth*, *Nobody*.

TRAINING/TEACHING MFA in Acting with a Voice Specialization from York University. Tom regularly teaches courses on voice and performance for the Department of Theatre and Film at the University of Winnipeg.

ET CETERA I'm so glad to be back at Royal MTC supporting another fantastic group of artists!



Rayna Masterton

Assistant Director

ROYAL MTC First engagement.

OTHER THEATRE *This is How We Got Here* (Persephone); *Li Keur: Riel's Heart of the North* (MB Opera); *Space Girl* (PTE); *Race Cards 10 x 10* (Prime Mover Theatre); *Climate and Main* (TPM); *Three (Fill The (W)hole Theatre/Royal MTC ShakespeareFest)*; *Prairie Nurse* (PTE).

TRAINING Graduate of the University of Winnipeg's Theatre Performance program and current member of PTE/MAP Playwrights Unit.

ET CETERA Gros maarsii to my mentor Katie for all her support, encouragement and compassion. Love to my family and friends for their constant support and care. For my Little Women, Norah and Essa.



PATENT 5

Cocktail Room open Wednesday through Saturday 4–11pm
108 Alexander Avenue

TAROT INSPIRED COCKTAILS – THE MAJOR ARCANA

Our new cocktail menu draws inspiration from the mystical Major Arcana. Each cocktail channels the spirit of the cards—will you choose The Lovers for a taste of romance or The Fool for an adventurous twist? Come join us for a drink.

LITTLE WOMEN



Anika Binding

Assistant Lighting Designer

ROYAL MTC Assistant Lighting Designer: *The Recipe* (with TPM), among men (with TPM). Apprentice Lighting & Video Designer: *The Lehman Trilogy*. Apprentice Lighting Designer: *The Mountaintop*.

OTHER THEATRE Lighting Designer: *Miss Shakespeare* (WST); *From Up Here* (U of W). Costume Designer: *Miss Shakespeare* (WST); *Liars at a Funeral* (Magnus); *Stupid Fucking Bird* (U of W). Stage Management: *Something Rotten!* (MTYP); *Scenes from Love and Information* (U of W). Assistant Lighting & Set Designer: *The Prom* (Dry Cold).

TRAINING BA Hons. in Theatre and Film from the University of Winnipeg, with specializations in Design, Stage Management & Production, and Directing.

ET CETERA Anika would like to thank her friends, family and mentors for their endless support.



Rochelle Kives

Apprentice Director

ROYAL MTC Actor: *Into the Woods*, *Calpurnia* (with NAC), *Where.Are.You.From.* (Tiny Plays, Big Ideas). 2021/22 National Mentorship Program.

OTHER THEATRE Actor: *Mary Poppins*, *Ma-Buhay!*, *Rent*, *The Hockey Sweater*, *Miss Saigon*, *South Pacific*, *Little Shop of Horrors* (Rainbow); *The Prom*, *Kiss of the Spider Woman* (Dry Cold); *25 Questions for a Jewish Mother*, *Precipice* (WJT); *A Year with Frog and Toad* (MTYP); *South*

Pacific (WSO); *South Pacific* (Regina Symphony Orchestra).

FILM/TV Actor: *Meet Me Under the Mistletoe* (Great American Family); *A Kiss Before Christmas* (Hallmark); *Larry Saves the Canadian Health Care System* (Tripwire Media Group); *Not Funny* (Imaginary Productions).

TRAINING Graduate of Sheridan College's Musical Theatre Performance Program.

ET CETERA Rochelle is co-founder and producer of the vocal group UNIQUE3, who travel and perform on cruise ships all over the world. Huge thank you to Royal MTC and Katie German, a cherished friend and mentor, for this opportunity!



Sarah Struthers

Apprentice Costume Designer

ROYAL MTC 2023/24 National Mentorship Program.

OTHER THEATRE Costume Design: *Neither Here Nor There* (Sick + Twisted); *Kateryna and Havrylo* (Ce-Lee Productions); *The Human Test* (Independent Project); *within and without* (U of W Devised).

FILM *SLURP* (Elena Sturk Lussier).

TRAINING University of Winnipeg Honours Devised Theatre Program.

ET CETERA Thank you to Royal MTC and to all my loves for their continued support!
xoxo

WESTGATE **ENTERPRISES LTD.**

**Commercial and Residential
Excavation, Hauling and Demolition**



Contact us at 204-255-1000

LITTLE WOMEN



Karyn Kumhyr
Stage Manager

ROYAL MTC Selected: *The Secret to Good Tea*, *The Three Musketeers*, *The Rez Sisters*, *The Cottage*, *Heisenberg*, *A Christmas Carol*, *Sarah Ballenden*, *Chimerica* (with CS), *A Christmas Story*, *Next to Normal*, *The Shunning*, *Steel Magnolias*, *It's a Wonderful Life*, *Bleeding Hearts*, *Pride and Prejudice*, *Fiddler on the Roof*, *Our Town*, *The Tempest*.

OTHER THEATRE Selected: *Romeo & Juliet* (RWB); *End of the Line* (TPM/Walk & Talk); *Ma-Buhay*, *Rent*, *Beauty and the Beast* (Rainbow); *The Devil's Disciple*, *Desire Under the Elms* (Shaw); *Feast*, *The War Being Waged*, *The Third Colour* (PTE); *Pandora* (SIR/PTE); *Pippin* (ViC/WST); *Betty's Song* (Charlottetown Festival); *Spelling Bee* (Grand); *James and the Giant Peach* (MTYP); *The Rick Hansen Story* (MTYP/2010 Olympics/Citadel); *Molière*, *The Beauty Queen of Leenane* (ATP).

FILM/TV *Bring It On: Cheer or Die* (Universal); *Winnipeg Comedy Fest* (Frantic Films); *Burden of Truth* (CBC TV series).



Ridge Romanishen
Assistant Stage Manager

ROYAL MTC SM: *among men* (with TPM). ASM: *The Comeback*. Apprentice SM: *Sexual Misconduct of the Middle Classes*, *The Three Musketeers*, *Calpurnia*.

OTHER THEATRE PSM: *Trigger Warning: Cassandra* (Sick + Twisted). SM: *Iago Speaks*, *A Midsummer Night's Dream*, *Shakespeare's Will* (SIR); *Narnia* (Bad Hats Theatre/MTYP); *A Pickle* (WJT); *The*

Velveteen Rabbit (MTYP); *The Marriage of Figaro* (Manitoba Underground Opera). ASM: *Bed & Breakfast* (Capitol Theatre/PTE); *Mary Poppins* (Rainbow Stage); *Feast* (PTE). Apprentice SM: *Narrow Bridge*, *The Golem's Mighty Swing* (WJT); *Kiss of the Spider Woman* (Dry Cold).

TRAINING Ridge is a Graduate of the University of Winnipeg's Theatre and Film Program with Honours in Stage Management.

ET CETERA Ridge is thrilled to be back working with Royal MTC this season. He would like to thank all his friends, family and husband for their support and, of course, the fabulous folks at Royal MTC for another amazing opportunity to create live theatre in their home again!



Carolin Schroeder
Apprentice Stage Manager

ROYAL MTC First engagement.

OTHER THEATRE Stage Manager: *Bloodsuckers! The Musical!* (Winnipeg Fringe); *Oh, the Humanity and Other Good Intentions* (U of W); *Spotlight*, *On the Edge*, *Concert Hour Ballet*, *Dance Spectrum* (RWB School). Apprentice Stage Manager: *Merrily We Roll Along* (Dry Cold); *Romeo & Juliet* (RWB); *The Little Mermaid* (Rainbow).

TRAINING University of Winnipeg Theatre & Film Department.

ET CETERA Recipient of the Jean Murray - Moray Sinclair Scholarship. A huge thank you to everyone at Royal MTC. Thank you to my family, friends and mentors for your love, support and guidance. ●



Elevating arts and culture

Air Canada is a proud airline partner of the Royal Manitoba Theatre Centre's Black & White Ball. We soar together when we support arts and cultural institutions in the communities we serve.

#FlyTheFlag @aircanada

Élevons les arts et la culture

À titre de transporteur aérien, Air Canada est fière partenaire de l'événement Black & White Ball du Royal Manitoba Theatre Centre. En soutenant les institutions culturelles et artistiques dans les collectivités que nous desservons, nous les aidons à aller toujours plus haut, avec nous.

#HautLeDrapeau @aircanada

A STAR ALLIANCE MEMBER
MEMBRE DU RÉSEAU STAR ALLIANCE



AIR CANADA



EXPLORE MORE *Little Women*

EXPLORE MORE LOUISA MAY ALCOTT

***Louisa May Alcott: The Woman Behind Little Women* by Harriet Reisen.** A vivid account of Louisa May Alcott's life and especially her experience as a nurse in the Civil War and the effect of her father's utopian schemes on her life. She is truly as interesting as her most famous character Jo March. **B ALCOTT 2009**

***Eden's Outcasts: The Story of Louisa May Alcott and Her Father* by John Matteson.** Louisa May Alcott's father had an enormous influence on her life and this book looks at the way she was torn between pleasing her idealistic father and planting her feet in the material world. During her youth, the famous Alcott was her father, Bronson, and his dreams of a utopian world. He tested this idea through an agrarian commune, which ultimately failed within seven months. **B ALCOTT 2008**

***The Lost Summer of Louisa May Alcott* by Kelly O'Connor McNees.** A mixture of fact and fiction written about a love affair Louisa may have that would have influenced the story of Jo and Laurie in *Little Women*. The author asks how Alcott could have written so deeply of love and heartbreak when she didn't experience it herself. **FICTION MCNEES**

***Stories and Other Writings* by Louisa May Alcott.** This collection brings together three novels: *Work: A Story of Experience*, *Eight Cousins* and *Rose in Bloom* as well as seven rare stories and

public letters to explore more of the artistry of Louisa May Alcott. Much of her writings are about the assertion of women's rights. **FICTION ALCOTT**

EXPLORE MORE STORIES ABOUT THE MARCH FAMILY

***Marmee* by Sarah Miller.** A retelling of *Little Women* from the perspective of the matriarch of the March family, lovingly known as Marmee. **FICTION MILLER**

***March* by Geraldine Brooks.** Set against the backdrop of the Civil War, this Pulitzer Prize-winning novel looks at *Little Women* from the view of the absent father – March. An abolitionist and chaplain in the union army, he is driven by conscience to participate in the war. The character is also based on Alcott's father. **FICTION BROOKS**

***Great or Nothing* by Joy McCullough.** A reimagining of *Little Women* set in the spring of 1942 when the United States is embroiled in the second World War. It is told from each sister's point of view and touches on all the themes of the classic: grief, loss, love and growing up. **YA FICTION MCCULLOUGH**

***The Spring Girls: A Modern-Day Retelling of Little Women* by Anna Todd.** A retelling of the classic with a modern twist. This book is set on a New Orleans military base where sisters Meg, Jo, Beth and Amy are making their way in life while their father is on tour in Iraq. **FICTION TODD ●**

There are 1.4 million books, movies, audiobooks, eBooks, and more at the Winnipeg Public Library, and all you need to borrow them is your library card. There are 20 locations throughout the city, and there's an online catalogue for requesting items for pick-up at your library of convenience. An online e-Library has thousands of eBooks, eAudiobooks and more! All free to use with your library card. Visit us online at winnipeg.ca/library.

THE
Free Press



PROUD SUPPORTER

OF OUR **COMMUNITIES**

To subscribe call 204-697-7001
or visit winnipegfreepress.com/subscribe



Twenty-six years ago, you would have found me in the MTC box office, selling tickets.

This is the theatre where I had my very first apprenticeship as a stage manager – on *Evita*, in 2002. My very first stage management gig was right here, too. And although I've worked in theatres across the country in the years since, this theatre has always retained its place in my heart. It's home.

I know it has a special place in your heart too, which is why I'm asking you to join me in supporting our beloved theatre by making a donation today.

Every gift makes magic come to life. And this is a great time to donate! Your fellow passionate theatre supporters, Linda McGarva-Cohen and James Cohen, want to double the impact of your special donation and will match all new and increased gifts up to \$25,000 before December 31.

With each donation, supporters like you help us continue to share stories that enlighten, entertain and heal the human spirit.

You know and love Royal MTC, so you know this theatre is truly special. MTC lives in the heart of Manitoba and here, we are the heart of its vibrant theatre, arts and cultural community. I've been in many theatres across our great country – I've worked in them, I've enjoyed their shows, and I've collaborated with many others. Everywhere I go, Royal MTC is renowned for the quality of work on our stage, our superb casts, and the sumptuous sets, costumes and props, all built in our workshop.

Those of us who are from here, know this is the place where Manitoba's stories are told. Stories like *The Secret to Good Tea*, Rosanna Deerchild's play that was produced two seasons ago. It's now being picked up as a co-production by The Grand in London, ON and the National Arts Centre Indigenous Theatre in Ottawa.

So once again, your support means there is a home for these profoundly important stories, stories that make it onto the national stage. Reaching and moving a national audience.

That's the power of the theatre. And of *this* theatre.

I hope as you read this, you are looking forward to a joy-filled holiday season ahead. I hope our theatre has a place in your holiday plans. **And I hope you'll consider making Royal MTC a part of your donation plans as the year comes to a close.**

Please contact Brendan M^cKeen at **204 954 6412** or **bmckeen@royalmtc.ca** to make your year-end gift or scan the QR code.



A stylized, handwritten signature of Evan Klassen in black ink.

**Evan Klassen,
Executive Director**

ROYAL
MTC
MANITOBA THEATRE CENTRE



**Proud partner
of Royal MTC
and more than 400 other
Manitoba organizations.**

**MANITOBA
LIQUOR
& LOTTERIES**



#MBLLGoodTogether

Congrats

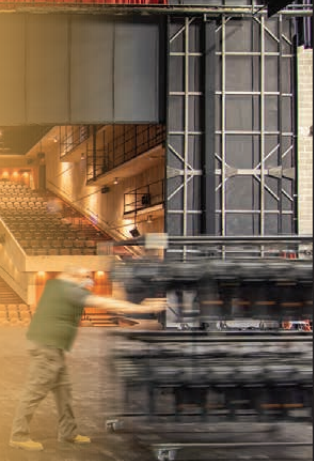


on 125 years!

**Royal MTC is proud to work with IATSE
Local 63 members who work behind the
scenes building and running the show!**

**ROYAL
MTC**
MANITOBA THEATRE CENTRE

PHOTO BY JERRY GRAJEWSKI



SUPPORTERS

Many thanks to our donors
who made a gift between
Sep 1, 2023 and Oct 20, 2024

DIRECTOR'S CIRCLE

\$10,000+

Gail Asper, OC, OM, LLD* &
Michael Paterson
Linda McGarva-Cohen & James
Cohen, OM
June & Bob Jackson Memorial Fund
for the Performing Arts - The
Winnipeg Foundation
Johnston Group Inc.
Ken & Sharon Mould
Robinson Family Foundation Fund
- The Winnipeg Foundation
Todd & Kellie Tanchak

\$6,500-9,999

Houston Family of Bradwardine
Fund - The Winnipeg Foundation
Mr. Leslie Taylor
Dr. Marcel Van Woensel
Denise Waldman

\$4,000-6,499

Zita & Mark Bernstein Family
Foundation
Pauline Braun - in memory of Duane
Braun*
David Christianson & Vera
Steinberger
Susan Glass & Arni Thorsteinson
Camilla Holland & Colin Viebrock*
Diane & Dave Johnston
Hildegard Loewen
Elizabeth Marr & Nick Slonosky
Dr. H. Nyhof & Ms. Jo-Anne Lutz
Gerry & Barb Price
Hartley & Heather Richardson
James & Janice Tennant

\$2,000-3,999

Dr. J Baluta & Ms. O. Kandia
Emily Burt*
David & Lianne Carefoot
David* & Barb Christie
Gerry* & Chris Couture
D. J. Cowan
Kerry Dangerfield**
Ben & Shari Diamond
Tony* & Jennifer Fletcher*
Linda Hamilton & Grange Morrow*
Sharon Hamilton*
Derek & Mary Johansson
Evan Klassen** & Bert Keeper

Myron & Marion Klysh
Dr. P. Kmet & Mr. B. Roslycky
Donna & Dave* Lalama
Katrina Lee-Kwen & Jeff Neufeld
Brendan McKeen**
Leigh Murphy - in memory of Liam
Murphy*
Drs. Bill Pope & Elizabeth Tippet
Pope Fund - The Winnipeg
Foundation
Sanford & Deborah Riley
Bill & Laurie* Speers
Mait & Pat Sundmark
Kelly Thornton* & Josep
Seras-Gubert*
Jeremy Trickett & Brandon Barnes
Trickett*
Helga Van Iderstine
Scott & Sonya Wright Fund
Anonymous

\$1,200-1,999

Edward & Jaime Acuna
Craig McIntosh & Lorraine Beck Fund
Todd Bourcier
Sheldon & Penny Bowles
Doneta Brothie, CM* & Harry
Brothie*
Chambers Family*
Hadera & Mark Chisick
Jan & Kevin Coates*
The Circle Foundation
Hugh Conacher*
Matthew Cutler & Dr. Avery Miller
Dr. Lawrence & Ms. Brenda Ellerby
Corinne Ratuski & Brad Favel*
Sylvia Flam*
Katherine Fox**
Susan* & Ab Freig*
John* & Nicola Guttormson*
Barbara Hamilton
Gregg & Mary Hanson
Vivian Hilder-Skward & David Skward
- in memory of Mike Skward*
Shawn Hughes & Bruno Koehn*
Katie Inverarity*
Danielle Jobb & Brendan Roddy
Lisa Johnston*
Serena Helen Kraayeveld Fund -
The Winnipeg Foundation
David* & Ellen Kroft*
J. Lamothe*
Rick Lee & Laurie Shapiro
Peter & Karen Leipsic
Andrea Lochhead
Gail Loewen
Teresa Lopata & Bruce Wagg
Reginald & Judy Low
Mark & Gloria Mancini*
Jim* & Penny McLandress*
Melissa Novocosky*

Wayne & Linda Paquin
Damian Perron
Donna Plant
Francis Pollard
K. Heather Power & Harold Klause*
Jocelyne Prefontaine**
Priority Restoration
Lawrence Prout* & Lisa Gardewine*
Margaret Redmond* & Greg Gillis*
Nancy & Loren* Remillard
R. S. Cunha Dental Corp*
Sudhir Sandhu**
Ken & Susan* Skinner*
Donald Smith*
Kevin Hines & Shelly Smith-Hines*
Joan Stephens - in memory of
Annice Stephens*
Sasha & Josh Thiem*
Geeta* & Michael Tucker*
Vicki Verville*
Grant & Trish Wainikka
Murray & Nancy Wiegand
Winnipeg Theatre Awards
Rick & Claire* Workman
Dr. & Mrs. James & Kim Zacharias
Nicole Zajac*
Anonymous

COMPANY CIRCLE

\$600-1,199

Robert & Ina Abra Family Fund -
The Winnipeg Foundation
Margaret Astwood
Dr. Corinne Barrett DeWiele &
Mr. V. Michael DeWiele
Janet & Marcel Belanger
Ryan Bernier
Kris & Ruth Breckman
J. Davidson*
Neil & Sherry Fast
Felicia & Trevor Frost
Brad & Jenn Gesell
Tyler Gompf
Charles Henaire
Rodney Hick & Tracey Jackson
N & L Holliday
Sylvia Jansen
Gerald Jewers
Hon. William Johnston
JWTAM Medical Corporation
Peter Kingsley, KC*
Hester Kroft
John & Heather Lea
Ian & Nicki LeGrand*
Shirley Liba
Tim Preston & Dave Ling
Linda & Ray Loewen
Pat & Jim Ludwig
Brian & Christie Lysack*

*Current Royal MTC Board of Trustees/Advisory Board members

*Current Royal MTC staff

*Monthly Donors/Drama Club

SUPPORTERS

Garry Markham
Gerard Matte & Lydia Surasky-Matte
John & Natalie Mayba
Carol & Barry[§] McArton
Campbell & Lorraine McIntyre
Terri & Jim McKerchar[†]
Ron McKinnon[§] & Peggy Barker[†]
Erin Meyer
Carolyn Garlich & Peter Miller Gift Fund
Brendan Mitchell
Marika Nerbas
Tracey Novak
Richard & Bonnie Olfert
Ivan & Cathy Oresnik[†]
Cam & Carole Osler
Pierre Ouellet
Judith Parker[†]
Lorraine & Ernest Reinfort
David & Joan Rew
Henriette Ricou & Jure Manfreda
Jean Riggall[†]
Debbie Roy
Edith & Emile Samuels
Barbara Scheuneman
Renate & Bill Schulz
In memory of Sybil Shack for
the benefit of MTC - Jewish
Foundation of Manitoba
Carol & Ron Slater Fund - Jewish
Foundation of Manitoba
Deborah Spracklin
Scott Stewart
Sandra Tankard[†]
Susan Taylor
Leah R. Janzen & Ian R. Thomson
Dr. Peter Triggs[†]
Faye Warren
Margaret Wollner[†]
Dr. Dorothy Y. Young
4 Anonymous

\$250-599

Pat & Darrell Adams[†]
Dr. Liz Adkins
Bob Adkins - in memory of Nancy
Adkins
Glen Agar & Pam Reimer
Dawn Andersen
Jay & Judy Anderson
Elizabeth B. Armytage Fund - The
Winnipeg Foundation
Jennifer & Scott Ash
Peter Attwood
Brenna Bacchus[†]
Peter Bagot
Zaz Bajon & Patricia Hunter
Glenn & Norma Baldwin
Olga & Ivan Banias
Earl & Cheryl Barish
Dianne J. Beaven

Larry Beeston & Anna Sikora
Terri & Morley Bernstein
Bruce & Joyce Berry
Susan & Edwin Bethune
Helga & Gerhard Bock
Lilian Bonin & Daniel P. Levin
John & Marilyn Bourbonnais
Ron & Joan Boyd[†]
M. Braid
Billy Brodovsky & Libby Yager[†]
Sheila & David Brodovsky
Brian Brown
Ellen & George Bruce
Donna Byrne
Colleen Cariou & Ron Maier
A R Carr
Brenlee Carrington Trepel KC &
Brent Trepel
Leesa Carter & Colin Morrison
Cheryl Chaban
Rosemary Chapman
Gertie Chipka
Ken Clark & Pamela Lockman
Agnes & John K. Collins
Josie Cosyns
Jim & Gwen Court
Christopher Courtney
Robert Coutts[†]
J. V. Dale
Verna Danylchuk
Doug De Graff
Sharron & Joel Dudeck
SJ Duncan Medical - in memory of
Myrtle Bird
Craig & Claudette Dunn
H. Dyck
Roberta Dyck
Glen[†] & Joan Dyrda
Michael Easton
Greg Edmond & Irene
Groot-Koerkamp
Ruth & Ernest Epp
Fran Falzarano
Kate Hodgert-Fennell[†]
Pat & Doug Finkbeiner
Gayle Fischer
Maureen Flaherty & Fred Beckwith
Andrea Forbes-Avila[†]
Pamela & Kevin Friesen
Adrian Frost & Kerra Mruss
Paul Daeninck & Monica Furer
Colleen & Dan Furlan[†]
Daniel Gagnon
Lynne & Lindsay Gauld[†]
Trish Gehle-Preston
Denise & Ron George
Heather Gillerder
Jan Gordon[†]
Kayla Gordon & Art Maister
L. Graham
M. Gray

Graham Hiagh
Thomas & Nadia Hall
Noella & Patrick[†] Hanan[†]
Doug & Sylvia Hannah
Brian & Dawn Hanson - in memory of
our Daughter, Kristin Dawn Hanson
Linda Harlos & Adrian Wildsmith
Kathryn & Wayne Harrison
Valerie & Robert Hazelton
Frank & Sue Hechter[†]
Marilyn Hendzel[†]
Judith & Eric Hinton
Ted & Cathy Hlynsky
Rob & Jen Hochkiewicz[†]
Betty Hoffmann
Michael & Crystal Hollas[†]
Ken Houssin[†], FCA
Dan & Karen Ilchyna
G. C. Irwin-Kilfoyle
Crystal & Gunter Jochum
Marilyn & Sheldon Joyal
Michael Joyal, esq.[†]
Joanne & Rod Kamins
Sherry Kaniuga[†]
Sheryl Kapit & Aaron London[†]
Joel & Danna Kaplan
Sandy & Joan Kellett
Joan Kennedy
Robert Kennedy & Claudette Leclerc
Adam & Tara Klaponiski
Betty Klassen
Julie Ann Kniskern
Donna Korban & Family
Carol Campbell & Andy Krentz
Howard & Jane Kroeger
Robert Lafond
Cheryl Langer
Barbara Latocki
Desiree Lavallee^{††}
Bob Leggett
Richard Leipsic & Kerrie Halprin
John & Roberta Lewis
Charles & Diane Littman
Sarah, Chris & Lori Luby
Brent Schacter & Sora Ludwig
Carole Lupkowski
Tom Lussier
Jim MacGregor & Christine Halma
Judith Manning
Cheryl & Eric Matheson
Monique Marynard
Barbara McCandless
Jim & Lynne McClelland
Marlene & Ian McKay
Greg & Gloria McLaren
John & Carolynne McLure Fund -
The Winnipeg Foundation
Donald G. McNabb
Melissa McRae
Barb Melnychuk
Albert & Judith Metcalfe[†]

*Current Royal MTC Board of Trustees/Advisory Board members †Current Royal MTC staff ‡Monthly Donors/Drama Club §Fondly Remembered

SUPPORTERS

Susie Miclash
 Irene Miller & the late Claire Miller
 Catherine Lambeth & Grant Mitchell
 Sharon & Michael Moffatt
 Dr. Catherine Moltzan & Paul Brault
 Marc Monnin & Donna Miller
 Tom & Susan Mooney
 Sagan Morrow*
 Cindy Mostow
 B. Nagamori
 Brad Nance
 Vanessa Dowostawski
 D. & G. Nytepchuk
 Joanne Olchowecki
 Jean-Pierre Parenty & Michelle Smith
 Linda Pashniuk
 Peter & Anita Pelech
 Maryam & Izzy Peltz Fund - Jewish
 Foundation of Manitoba
 Bonnie Penno*
 Linda & Rob Pettit
 Rick Pinchin
 Beth Pollard
 Maureen Prendiville & Paul Jensen
 Estate of Doris Quinn
 Carole Rankin*
 Lucas Redekop
 Nalini Reddy*
 Fay Reich
 Cheryl Reid
 Mr. & Mrs. William Reynolds

Kevin Kuryk & Riva Richard
 Andrea & Michael Robertson*
 Deborah & Neil Rostkowski
 Paul & Cathy Samyn
 Onnolee Scharf*
 Roland Schneider
 Trudy Schroeder
 Harald & Vicki Schulz
 Faye Scott
 In memory of Sybil Shack for the
 benefit of MTC; Marym & Izzy
 Peltz Fund
 Sharon Shaydak
 Blake Shiaro
 Cheryl & Gordon Siemens
 Marc Simard
 Ms. Judy Nichol & Dr. Jim Skinner
 Lillian Smith
 Mark C. Smith & Sabrina & Siena
 Smith
 Maddi Soubry
 Christine Soubry
 Peter & Geri Spencer
 Anthony Steffes & David Viggars
 Jodee Stewart
 Lisa Stiver
 Jonathan Strauss
 Eleanor Suderman
 Mary Ann Supleve
 Shayne & Kathryn Taback
 Ray & Fenella Temmerman

Malcolm & Shirley Tinsley
 Douglas & Deanna Tkach
 Jen & Kevin Tomanek
 Gord & Lorena Trann
 Brad Baydock & Wendy Tretiak
 Dr. Stephen Tritt & Dr. Sharon
 Goszer Tritt
 Cathy & Terry Tully
 Grant Tweed
 Dr. Kristel van Ineveld
 Gwen & Helmut Waedt
 Jerry & Karen Wake
 Stirling Walkes
 Deanna Waters
 Leslie & Sean Watson
 Tamara & John Wells
 Michael & Lydia West
 Lionel & Lorraine Wiens
 Theresa Wiktorski
 Kathleen Gough & Tim Wildman
 Catherine Wilkie
 Gustine & Dennis Wilton
 Reed & Arla Winstone
 Deborah A. Wolfe
 Margaret & Paul Wright
 Allana & Eden Wyness*
 A Young
 Olia & Roman Zubach
 Anonymous*
 16 Anonymous

Jones & Company

— WINE MERCHANTS —



Shop Local, Globally.

1616 St. Mary's Road Winnipeg, Manitoba
 204.948.WINE (9463) | Text a Somm: 204.400.0499
joneswines.com | wine@joneswines.com

SUPPORTERS

\$150-249

Robert & Patricia Adamson
 Jay & Judy Anderson
 Lynne M Arnason
 Dennis & Elaine Schultz
 Margaret Askeland
 Nadine Audet*
 Rose Aziman
 Ian & Carolyn Backus
 Richard & Nancy Ball
 Richard & Josie Bartlinski
 Karen & John Bate
 Brenda Batzel
 Andrea Bellhouse
 Susan & George Benias
 Byrnes Benoit
 Trish Bergal
 Trust Beta
 Don & Diane Bewell
 Val & Blair Bingeman
 Joan Blight
 Mavis Bollman & Ray Hesslein
 Jenna C. Boucher-Cowie
 Bruce & Karen Boyd
 Patricia Bozyk
 Janine Brémault Bamford
 Jackie & Steve Broda-Milian
 Gerald R. Brown
 Carol Budnick
 John Burrows
 Cheryl Butler
 L. K. Butler
 Corinne Campbell
 Debbie Campbell
 Don & Carolyn Campbell
 Laura Campbell
 Jody Chalmers & Monique Perro*
 Doug & Monica Chapman
 Lawrie & Bea Cherniack
 Duane Cheskey & Georgia Kerr
 Dr. T. I. Choptiany
 Katherine Cobor
 Diane Connelly
 David & Kathy Connor
 Susan Copeland
 Sarah Corley
 R. Lynn Craton
 Drs. Kristen Creek & Josh Manusov
 Margaret Cuddy
 Bradley J. Curran
 Tracy Dahl, CM
 Georges Dampousse
 Werner & Judy Danchura
 Linda Daniels
 Chris Darazsi*
 Andre & Diane de Rocquigny
 Bev & Allan Doern*
 Heather Domke
 Sheila Domke & Stephen Ross
 Tom Dooley
 Rita Dornn

Rob Dryden
 John & Ada Ducas
 John Edwards & Wendy Stelco
 Ken & Lesley Enns
 Anthony Esposito
 Jemara Fay*
 Pablo & Carrie Felices-Costello
 Marion Fellingner
 The Ferriers
 Patricia Fitzpatrick
 Nancy Flintoft & John McWilliams
 Lawrence Foster*
 Donna Frame*
 Christine M Freeman
 Ron Gaffray
 Gloria & Rick Gallant
 Helen Garrod
 Patti & Rick Gilhuly
 Benjamin Goldenberg
 John & Marcia Gordon
 Jennifer Graham
 Abigail Grieder
 Dr. Darrell Grymonpre
 Sandra Guadagni
 Derryl & Linda Hall
 Joan Hanton*
 Don Hardy
 Joanne Harris
 Shellie & Grant Hatch*
 Kyle Hendin & Breanne Korban
 Karen Herd
 Mary & David Hickling
 Hilary Druxman Design
 Mary Hodge
 Vicki Hooke
 Keith & Karen Horn
 Colleen Hrabitt*
 Lisa Hunt & Hugh Wichenko*
 Jean Hyrich
 Stu & Alice Iverson
 Heather D. Janik
 Dave & Lesia Johns
 Tiffany Johnson-Sheldon
 Robert & Karen Johnston
 J.H. Kaminsky
 Lydia Kandia
 Sue & Richard Kathler
 Don & Sheila Katz
 Gail Keeley
 Penny & Brian Kelly
 Howard Kideckel
 Vernon & Roselin Klassen
 John & Kathryn Knowles
 Ms. Julie Koehn
 Peter Kohut - in memory of my
 Spouse Valerie Kohut
 Janice & Richard Kostelnik
 Jacki & Sheldon Koven
 Lesley Koven & Eric Thomas
 Lorraine Kraichy*
 Paula Kristjanson Hasiuk

Teena Laird
 Doug Larcombe
 Bryen Lebar & Patricia Sauder*
 Saul & Kathy Leibl
 Tim & Kate Letkemann*
 Carol & Clifford Levi
 Stan & Susan Lipnowski
 Dr. Karen Lischka
 Judy & Eric Lister
 John & Joy Loewen*
 Israel & Maylene Ludwig
 Carol Ann Lussier - in memory of
 Joanne
 Wally MacMartin
 Lyndsay Manaigne
 Ilse Marotta
 Lynne Martin* - in memory of Omar
 Martin
 Agatha Massey
 Linda Matheson
 Judy McCleary
 Barry McNabb
 Catarina Mello Schultz*
 Loretta Merriam
 Constantina Metaxas
 Heather Mian
 Jim & Karren Middag
 Gail Mildren - in memory of Walter
 A. Mildren
 Cressida Mills
 Allison Moore*
 Marlene Mortimer
 Shelley Muir
 Susan Munroe
 Harold & Nancy Nagy
 Rhea Nelken
 Andrea Neufeld
 Leslie Nichol
 Robert Nickel
 Valerie Nielsen
 Tom Nowicki
 R. Ooto
 Cynthia Orris
 Theresa Oye
 Paulette Pappel
 Sonja Pasiechnik
 Sandra Paterson-Greene & Russ
 Greene
 Craig Patterson*
 Myron Pawlowsky & Susan Boulter
 Jo-Anne & Harvey Peltz
 Harold & Ingrid Peters Fransen
 Donald & Elaine Peters
 Denise Plett
 Carolyn Porhownik
 Nancy & Brett Porth
 M. Lois Powne
 Arlene Prasek
 Tammy Rabkin
 Vivian E. Rachlis
 Roberta & Rick Rackal

*Current Royal MTC Board of Trustees/Advisory Board members

*Current Royal MTC staff

*Monthly Donors/Drama Club

SUPPORTERS

Dr. R. & Audrey Ramchandrar
 Jim & Kathy Ranick*
 Linda Ratynski
 Ted & Marilyn Redekop
 Dr. Martin Reed & Joy Cooper
 Joy Reimer
 Shelley Rennie
 Marilyn Robbins
 Nicole Robidoux
 Linda Robinson
 Gail MacAulay & Kevin Rollason
 Richard Ross
 Pat & Michelle Rowan
 Michael T. Ruta
 Barbara A Ryan
 David & Tammie Sainsbury
 Heather Sandilands*
 Terry Sargeant & Margaret Haney
 Carol Scurfield
 Greg Sexsmith & Joni Lavender
 Sexsmith*
 D. L. & C. Sexton
 Kumar Sharma & Angelina DiSanto
 Jim & Susan Shaw
 Dr. Elinor Simons
 Linda Simpson
 Meera & Sach Sinha
 Sandra & Cliff Skrabek
 Lynne Skromeda
 Earl Slimmon

Muriel Smith
 Jon Sorokowski
 Jacqueline St. Hill
 E. Steeg
 Darlene Stepanik
 Kim Stephens
 Heidi Struck*
 Shirley & Tom Strutt
 Alec Surasky
 Anita Tait
 Shelley & Jeff Tallin
 Mala Teeluck*
 Karen Tereck
 Elaine Toms
 Marilyn Trepel
 Elaine Tresoor
 Eric Turner*
 Chris Turyk & Bryce Weedmark*
 Robert Tyler & Laurel Hammond-Tyler
 United Way
 Jan Van Aertselaer
 Brent & Jocelyn VanKoughnet
 Nancy Vincent
 Judy Wakefield
 Jane & Don Walters*
 Paul & Laura Walton*
 Robert & Sherilyn Ward
 John & Marjorie Warkentin
 Peter & Joan Washchysyn
 Mary Agnes Welch*

Alys-Lynne & Steve West*
 Norma & Ron Westcott
 Al & Pat Wherrett*
 Florence & Donald Whitmore
 Leslie Wilson
 James Wood*
 20 Anonymous



Let us celebrate you.

Join the Founders' Circle today and your planned gift will ensure that Royal MTC will be a home for artists and arts lovers for generations.

We look forward to recognizing and celebrating your generosity, foresight, and commitment to Royal MTC's future starting today.

IF YOU HAVE ANY QUESTIONS, WE WOULD LOVE TO HEAR FROM YOU!

Contact Brendan at 204 954 6412 or bmckeen@royalmtc.ca



ROYAL
MTC
 MANITOBA THEATRE CENTRE



SUPPORTERS

SPONSORS

Air Canada
The Asper Family Foundation
The Gail Asper Family Foundation
The Asper Foundation
Bell MTS
Birchwood Lexus
BMO Financial Group
Bonaventure Travel Inc.
Canada Life
CIBC Imperial Markets
CPA Manitoba
Culligan Water
Dycom Direct Mail Services
Esdale Printing Co. Ltd.
Fairmont Winnipeg
Fillmore Riley LLP
Free Press
Friesens Corporation
GFL Environmental
HUB International
IG Wealth Management
JEM Insurance
Jones & Co Wine Merchants
Lawton Partners
Soirée Event Planning
Manitoba Bar Association
Liquor Mart
Manitoba Public Insurance
McDiarmid Flowers
McNally Robinson Booksellers
POS Systems
RBC Foundation
RE/MAX
Red River Co-operative Ltd.
Relish Branding
Richardson Foundation
Sleeman Breweries Ltd.
Stantec Consulting Ltd.
Tanchak Wealth Management Group
Taylor McCaffrey LLP
TD Bank Group
The Thomas Sill Foundation
Torque Brewing
University of Manitoba
WOW! Catering

CORPORATE DIRECTOR'S CIRCLE

\$25,000+

Johnston Group Inc.
Richardson Foundation

\$5,000-9,999

Cambrian Credit Union
Maxim Truck & Trailer - Doug
Harvey & Jan Shute

\$3,000-4,999

Maple Leaf Construction Ltd., Blake
Fitzpatrick

\$1,200-2,999

Arthur J. Gallagher Insurance and
Risk Management
B.A. Robinson Co Ltd.
Domo Gasoline Corporation Ltd.
- Kate M. Everett, President
IATSE Local 856
Manitoba's Credit Unions
MMP Architects
Pollard Banknote Limited
PRA Inc.
Qualico
Terracon Development Ltd.

CORPORATE COMPANY CIRCLE

\$600-1,199

Mid West Packaging Limited
Premier Printing Ltd.

\$300-599

MCW/AGE Consulting Professional
Engineers
Winnipeg Building & Decorating Ltd.

\$150-299

Patill/St. James Insurance

*Current Royal MTC Board of Trustees/Advisory Board members

*Current Royal MTC staff

*Monthly Donors/Drama Club



Proud supporter of the
Royal Manitoba Theatre Centre.

BellMTS

SUPPORTERS

FOUNDERS' CIRCLE

Wayne & Lee Anderson
 Gail Asper, OC, OM, LLD*
 Zdzislaw (Zaz) Bajon & Patricia Hunter
 Mariam Bernstein
 Marjorie & Morley⁵ Blankstein
 Duane⁵ & Pauline Braun
 Doneta Brothchie, CM* &
 Harry Brothchie
 Ken⁵ & Denise Brown
 David & Lianne Carefoot
 Len & Heather Cariou
 Terri Cherniack & Steven Schipper,
 CM, OM
 Jennifer Cheslock & George Buri
 David Christianson & Vera
 Steinberger
 David* & Barb Christie
 Gerry* & Chris Couture
 D. J. Cowan
 Hugh B. Cowan
 Kerry Dangerfield*
 Laurie Lam & Larry Desrochers
 Glen* & Joan Dyrda
 Robert & Florence Eastwood
 Don & Elfie Elias
 Bill⁵ & Gayle Fischer
 Anthony* & Jennifer Fletcher
 Jack Fraser
 James Gibbs⁵
 Sandy & Rheal Gousseau
 Rita Gunn⁵ & Gregory Mason
 John* & Nicola Guttormson
 Ahava Halpern & Frank Lavitt
 Linda Hamilton & Grange Morrow
 Gary Hannaford* & Cathy Rushton
 Ted⁵ & Gail Hechter
 Elaine Heinicke⁵
 Camilla Holland
 Shawn Hughes & Bruno Koehn
 June⁵ & Bob Jackson Fund for the
 Performing Arts
 Maureen E. Jay
 Andrew & Wendy Jensen
 David & Diane Johnston
 Dr. Leonard & Hope⁵ Kahane
 Janis Kaminsky
 Jason Kasper
 John Kearsey
 Gordon & Anne Keatch⁵
 Rob Kennedy & Claudette Leclerc
 Serena Helen Kraayeveld
 Leona J. MacDonald
 Cheryl Johansson⁵ & Michael
 Mainman
 Mark & Gloria Mancini
 Virginia Martin⁵
 Peggy Barker & Ron McKinnon⁵

Jim* & Penny McLandress
 Barb Melnychuk
 Bob & Pat Migliore
 Jeffrey Morton*
 Ken & Sharon Mould
 Dr. Liam Murphy⁵
 Robb & Heather Paterson
 Chris Pearce
 Scott Penner
 Gina & John* C. Petersmeyer
 Drs. Bill Pope & Elizabeth
 Tippet-Pope
 K. Heather Power & Harold Klause
 Margaret Redmond* & Greg Gillis
 Edward Fisher & Lyse Rémillard
 Joan D. Richardson
 Jean Riggall
 Michelle Rowan
 Michael T. Ruta
 Sharon Ryman
 Susan Skinner*
 Kevin Hines & Shelly Smith-Hines
 Bill & Laurie* Speers
 Deborah Spracklin
 Joan Stephens
 Joanne Tait
 Suzanne Ullyot
 Lionel & Lorraine Wiens
 Margaret⁵ & Alfred Wikjord
 Richard L. Yaffe & John A. Statham⁵
 Brenda Zaporzan⁵
 2 Anonymous

TRIBUTE GIFTS

In honour of Camilla Holland
 Robert Kennedy & Claudette Leclerc
In memory of Ron McKinnon
 Peggy Barker
 Elsie & Peter Douglas
 Ruth Denham
 Sylvia Flam
 Tracy Love
 Ron & Sheila Snider
 Ross Taylor
 Nicole & Larry Woodley
**A Son's Tribute to Berdie &
 Irvin Cohen**
 Jewish Foundation of Mantioba

*Current Royal MTC Board of Trustees/Advisory Board members *Current Royal MTC staff *Monthly Donors/Drama Club ⁵Fondly Remembered
 If you have remembered Royal MTC in your will, please let us know.

SUPPORTERS

ENDOWMENT - STEVEN SCHIPPER FUND

Many thanks to the generosity of our Endowment Fund donors who gave a gift or fulfilled a pledge payment between Aug 1, 2023 and Oct 20, 2024. Amounts listed are cumulative.

\$5,000,000+

Government of Canada/
Gouvernement du Canada
Canadian Heritage/Patrimoine
canadien

\$250,000-499,999

Gail Asper, OC, OM, LLD* &
Michael Paterson

\$100,000-249,999

Manitoba Theatre Centre Volunteer
Corps of Ushers
The Leigh & Liam Murphy Family
Fund
Henriette Ricou & Jure Manfreda

\$25,000-49,999

Don & Sheila Katz
Susan & Keith Knox
Garry Markham
Peggy Barker & Ron McKinnon[§]
Norma Anne Padilla
L. Blair Philpott & Tom Kynman
Margaret[§] & Alfred Wikjord

\$10,000-24,999

Peggy Barker & Ron McKinnon[§]
Don & Sheila Katz
Susan & Keith Knox
Garry Markham
Norma Anne Padilla
L. Blair Philpott & Tom Kynman
Margaret[§] & Alfred Wikjord

\$5,000-9,999

Margaret Caie
Ron & Carol Chapman
Pam & Andrew Cooke
Maureen E. Jay
Gordon & Sherratt Moffatt
Gina O'Connor & John C.
Petersmeyer*
Barbara Scheuneman
Dr. Dorothy Y. Young
2 Anonymous

\$2,500-4,999

Don & Cheryl Breakey
Sheila & David Brodovsky
Jan & Kevin Coates
Roberta Dyck
Michael & Lynn Evans
David & Ewhenia Gnutel
John & Margaret Graham
Carol Campbell & Andy Krentz
Barbara Main
Jean & Lisa Neron
Elaine Toms

\$1,000-2,499

Joan & Edward Alexander
Ron & Joan Boyd
Emily Burt
Art & Donna Chow
Agnes & John K. Collins
Dorothy Davidson
DGH Engineering Ltd.
Brenda & Michael Evans
Jeremy & Maureen Gordon
Teresa A. Hay
Jordan Janisse & Teresa Cooper
Lynne Jentsch
Barbara Latocki
Gerry Matte & Lydia Surasky-Matte
Anthony & Joyce McWha
Estelle Meyers
Paul & Elaine Neelon
Myron Pawlowsky & Susan Boulter
Edna Poulter
W. & N. Rennie
Jim & Susan Shaw
Howie & Sue Simpson
Deborah Spracklin
Anonymous

\$500-999

Marge & Ted Avent
Peggy Bainard Acheson - in memory
of Judy Acheson
Helene Dyck
Sandra Giercke
Mr. & Mrs. Fred Kisil
Dr. Shelley Mahoney
Bob & Pat Migliore
Marlene Mortimer
Sandra Sadler
Ivor & Lorna Schledewitz
Bryce & Jenna Simes
Peter & Sharon Taylor
Gabor Vamos & Brenda Silver
Anonymous

UP TO \$499

Ingrid Bolbecher
Allan & Evelyn Hardy
Nancy Latocki
F. Lemieux
Jacqueline L. Melnyk
Edward Fisher & Lyse Rémillard
Elaine Walker
2 Anonymous

**MANY THANKS TO
OUR VOLUNTEERS!**

*Current Royal MTC Board of Trustees/Advisory Board members *Current Royal MTC staff *Monthly Donors/Drama Club [§]Fondly Remembered
If you have remembered Royal MTC in your will, please let us know.

SUPPORTING PARTNERS

CORE FUNDERS



Canada Council
for the Arts
Conseil des arts
du Canada



CONSEIL DES
ARTS DU
MANITOBA
ARTS COUNCIL



WINNIPEG
ARTS COUNCIL

EXCLUSIVE PRODUCTION SUPPORTER



RICHARDSON
FOUNDATION

TOM HENDRY WAREHOUSE SEASON SPONSOR

BMO



OPENING NIGHT SPONSOR

TAYLOR
McCAFFREY
LAWYERS

JOHN HIRSCH MAINSTAGE PRODUCTION SPONSORS

THE
ASPER
FOUNDATION

GAIL ASPER
FAMILY FOUNDATION

TOM HENDRY WAREHOUSE PRODUCTION SPONSOR

THE
ASPER
FOUNDATION

JOHN HIRSCH MAINSTAGE PERFORMANCE SPONSORS



THEATRE FOR YOUNG AUDIENCES



NATIONAL MENTORSHIP PROGRAM



Emerging
Artists

PIMOOTAYOWIN CREATORS CIRCLE



TD READY
COMMITMENT

STUDENT TICKET SPONSOR



REGIONAL TOUR



WEALTH
MANAGEMENT



CONSEIL DES
ARTS DU
MANITOBA
ARTS COUNCIL

UNDERSTUDIES



ARTS, CULTURE AND SPORT
IN COMMUNITY FUND



WINNIPEG 150 CELEBRATION PARTNER



SUPPORTING PARTNERS

2025 BLACK & WHITE BALL

SILVER SPONSORS



AUCTION SPONSOR



ENTERTAINMENT SPONSOR



COCKTAIL RECEPTION SPONSOR



FILLMORE RILEY VACATION RAFFLE SPONSORS



CATERING SPONSOR



WINE SPONSOR



COCKTAIL SPONSOR



2024 LAWYERS PLAY



CAPITAL ASSISTANCE



DESIGN SPONSOR



SEASON MEDIA SPONSOR



SUPPORTING SPONSORS



2024 WINNIPEG FRINGE THEATRE FESTIVAL



BOARD OF TRUSTEES

HONORARY MEMBERS

Her Honour, Lt. Governor Anita R. Neville
The Honourable Wab Kinew, Premier of Manitoba
His Worship, Mayor Scott Gillingham

EXECUTIVE OFFICERS

John Guttormson, Co-Chair
Laurie Speers, Co-Chair
Jocelyne Prefontaine, Secretary
David Kroft, Chair-Elect, Governance & Strategic Planning Committee Chair
Nalini Reddy, Inclusion, Diversity, Equity and Access Committee Chair
Loren Remillard, Nominating Committee Chair
Geeta Tucker, Treasurer & Organizational Performance Committee Chair
Claire Workman, Resource Development Committee Chair

TRUSTEES

Emily Burt	David Lalama
Blair Doell	Katrina Lee-Kwen
Brad Favel	Linda McGarva-Cohen
Jessica Floresco	Sudhir Sandhu
Katherine Fox	Nicole Zajac
Susan Freig	

ADVISORY COUNCIL

John Guttormson, Chair	Colin R. MacArthur, KC
Gail Asper	Patrick J. Matthews
Doneta Brothie, CM	Jim McLandress
Angus Campbell	Jeffrey Morton, FCA
David Christie	Hon. Jack Murta
Gerry Couture	Lillian Neaman
Kerry Dangerfield	John Petersmeyer
Hy Dashevsky	Lawrence Prout
Glen Dyrda, FCA	Jeff Quinton
Anthony C. Fletcher	Patricia Rabson
Jean Giguere	Margaret Redmond
Charron Hamilton	Susan Skinner
Gary Hannaford, FCA	Al Snyder
Yude Henteleff	Maureen Watchorn
Ken Houssin	

WINNIPEG FRINGE THEATRE FESTIVAL ADVISORY COUNCIL

Katherine Fox, Chair	Hope McIntyre
Kerry Dangerfield	Brad Regehr
Dr. Linda Hamilton	

STAFF

ACCOUNTING/FINANCE

Carlos Betonio, Payroll Coordinator
Misty Bromley, CPA, CGA, Director of Finance
Christina Smith, Accountant

ADMINISTRATION

Kurt Brown, HR Generalist
Evan Klassen, Executive Director
Kathrin Moncaster, IT Manager

ARTISTIC

Melissa Langdon, Artistic Associate
Isabelle Ly, Producer
Ian Ross, Program Director, Pimootayowin Creators Circle
Kelly Thornton, Artistic Director
Leslie Watson, Company Manager

BOX OFFICE

Colleen Hrabi, Director of Patron Services
Meaghan Fletcher, Box Office Manager
Box Office Representatives: Sharon Bunn, Jane Hunter, Alora Kempthorne, Shayla Meeroff, Daniel Mitchell, Sean Piche, Christina Reuther, Carolin Schroeder, Tatiana Tuazon, Katie Welham

CARPENTRY (JOHN HIRSCH MAINSTAGE)

Louis Gagné, Layout Carpenter[§]
Chris Hadley, Layout Carpenter
Brent Letain, Master Carpenter
Chris Seida, Scenic Carpenter

DEVELOPMENT

Kristine Betker, Interim Director of Development
Patrick Hanan, Development Database Specialist
Brendan McKeen, Individual Giving Manager
Stephanie Porrior, Event Coordinator

FRONT OF HOUSE

Janice Marple, Volunteer Manager
Cole Reuther, Front of House Manager
Trish Cooper, Assistant Front of House Manager
Alanna McPherson, Assistant Front of House Manager
Front of House Staff: Rachel Baziuk, Renelle Chartier, Meagan Christ, Rylen De Vries, Chael Donald, Cassidy Groening, Joanna Houston, Christine Leslie, Kimmy Martin, Ross McMillan, Lauren Minaker, Christina Reid, Eve Ross Moore, Odeah Roy, Kyra Lyle, Cobi Winston

MAINTENANCE

Chris Fletcher, Building Manager
Wayne Santos, Assistant Building Manager

MARKETING & COMMUNICATIONS

Rachelle Blatta, Communications & Social Media Manager
Ksenia Broda-Milian, Education and Enrichment Manager
Sue Caughlin, Marketing & Communications Manager
Desiree La Vallee, Ticketing Application Specialist
Savannah Lillies, Marketing & Communications Coordinator
Jocelyn Unrau, Director of Marketing & Communications

PAINT

Shauna Jones, Assistant Head Scenic Artist
Carla Schroeder, Head Scenic Artist

PRODUCTION

Christine Corthey, Production Associate
Ian Kirk, Production Driver
Allison Loat, Director of Production
Donnie Osler, Technical Director
Alex Sinclair, Assistant Production Manager
Steven Vande Vyvere, Assistant Technical Director

PROPERTIES

Khaleel Bautista, Props Builder
Zoë Leclerc-Kennedy, Assistant Head of Props
Jamie Plummer, Head of Props

STAGE CREW

Kayla McSwain, Head of Wardrobe (Stage)
Gary Plouffe, House Stage Hand[§]
Claude Robert, Head Electrician
Jessica Rose, Head of Audio
Liam Shattuck, Head Stage Hand
Chris Thomson, Head Carpenter

TOM HENDRY WAREHOUSE

Tim Clark, Head of Sound
Ryan Spracklin, Master Carpenter
Fisher Wohlgemut, Head Electrician

WARDROBE

Thora Lamont, Lead Cutter
Martha Schram, Wardrobe First Hand
Heather Thorleifson, Associate Head of Wardrobe
Jackie Van Winkle, Head of Wardrobe/Buyer

WIGS

Beverley Covert, Head of Wigs/Make-Up

WINNIPEG FRINGE THEATRE FESTIVAL

Chuck McEwen, Executive Producer
Tori Popp, Festival Manager

HONORARY STAFF

Zaz Bajon, General Manager Emeritus
Steven Schipper, CM, OM, Artistic Director Emeritus

[§]Fondly Remembered

BEHIND THE SCENES

ADDITIONAL PRODUCTION STAFF

LITTLE WOMEN

Linda Beech, Props Builder
Kate Berg, Scenic Painter
Kim Crossley, Cutter
Penny Hanford, Stitcher
Elana Honcharuk, Props Builder
Amanda Isaak, First Hand
Samantha Lekach, Stitcher
Karen Luchak, Stitcher
Barb Mackenzie, Stitcher
Farrah Okolita, Scenic Artist
Adelle Rawluk, Props Apprentice*
Adrianna Rodas, Props Apprentice*
Larissa Shabaga, Scenic Painter
Lela Stairs, Cutter
Evan Stillwater, Cutter
Sonya Vallis, First Hand
Andrea Von Wichert, Scenic Artist

Additional staff provided by IATSE Local 63

Act Like a Star!

Everyone at the theatre is part of the show. Yes, even you.

You want to be a star, don't you?

These tips will make you a stand-out performer (in a good way)!

SCENTS AND SENSIBILITY

Many theatre lovers experience adverse medical reactions from scented products. **Please consider others before using scented products.**

PARK YOUR MOBILE DEVICE

We know something interesting is happening on social media. It always is. But your neighbours want to watch the play. **Please turn off all mobile devices.**

THE SOUND OF SILENCE

Our theatre has great acoustics. So **when you're talking during the show, everyone can hear you.** Your neighbours, the ushers and even the actors. We want you to talk about the show but at intermission or after the final bows.

We're always happy to see you at the theatre. Thank you for coming!

*Position funded through the Jean Murray - Moray Sinclair Theatre Apprenticeship Program



Have you heard about DRAMA CLUB?

Do you want to know more about how theatre is made?

Drama Club connects you with the up-close, behind-the-scenes, a little bit dramatic content that you've been looking for.

Joining is easy and gives you some exclusive benefits. For as little as \$10 a month, you get:

- Two opportunities a year for the most exclusive, up-close tour of the backstage of our building;
- Monthly stories featuring props, costumes, upcoming artists, or legendary tales;
- Two special Drama Club-only events every year led by seasoned professionals.

Monthly giving is a budget-friendly way to spread your support throughout the year and make a transformational gift to Royal MTC.

Curious about monthly giving? Already a donor and interested in switching to monthly gifts?

Contact Brendan McKeen, Individual Giving Manager, at **204 954 6412** or **bmckeen@royalmtc.ca**.



ROYAL
MTC
MANITOBA THEATRE CENTRE



Empowering
creative
young minds

Proudly supporting
Royal Manitoba Theatre Centre

Canada Life and design are trademarks
of The Canada Life Assurance Company.

canada  TM

FillmoreRiley
VACATION PRIZE

LUXURY OCEAN TRAVEL

WITH EXPLORA JOURNEYS

Enjoy a seven-night all-inclusive luxury ocean experience for two with Explora Journeys to your choice of Mediterranean or Caribbean destinations.

Includes airfare, accommodations, and dining.
See royalmtc.ca/bw for full prize details & raffle rules.

Travel is subject to some restrictions, blackout periods and booking availability.
Your journey must be completed by October 31, 2025, and booked by September 30, 2025.

Tickets are available for purchase in the lobby or by phone.
For further details, contact Patrick at 204 954 6411.

Valued at \$20,200
BUY TICKETS NOW!
1 for \$50, 3 for \$100

Proceeds in support of Royal MTC's
productions and programs.



ROYAL
MTC
MANITOBA THEATRE CENTRE

COURTESY OF



AIR CANADA

**BON
AVENTURE**
TRAVEL


Explora
JOURNEYS

1000 tickets available. LGCA License Number: LGCA 1523-RF-45635