

# OVATION

ROYAL  
**MTC**  
MANITOBA THEATRE CENTRE

VOL 33 • NO 4  
FEB/MAR 2026



Royal MTC presents  
A Crow's Theatre Production

*Photos of Tom Rooney  
by Dahlia Katz*

## Rogers v. Rogers

Adapted for the stage by Michael Healey  
Based on the book by Alexandra Posadzki

JOHN  
HIRSCH  
MAINSTAGE

## IN THE SHADOW BEYOND THE PINES

By Rhonda Apetagon

TOM  
HENDRY  
WAREHOUSE



*Sacred fire illustration  
by Rhonda Apetagon*

DIRECT FROM  
LONDON'S WEST END!

# RIDE

## *The Musical*

Book, Music & Lyrics by  
Freya Catrin Smith and  
Jack Williams

April 16 - May 2, 2026  
The Berney Theatre

 GET YOUR  
TICKETS AT  
[WJT.CA](https://www.wjt.ca)

**WJT**  
Winnipeg  
Jewish  
Theatre

*The true-ish story of the first woman  
who dared to travel the world by bike!*

## MESSAGE FROM THE ARTISTIC DIRECTOR



Kelly Thornton

With a new year brings an array of new plays at both the Mainstage and Warehouse theatres. I am thrilled to bring Crow's Theatre's celebrated production of Micheal Healey's *Rogers v. Rogers* to our stage, as well the world premiere of Rhonda Apetagon's *In the Shadow Beyond the Pines*. These two new plays both pack a punch, and will leave you grappling with their themes long after the curtain falls.

Healey's entry point into writing *Rogers v. Rogers* was the book by the same name, written by Alexandra Posadzki, telling the story of the Rogers telecommunication dynasty. But it is the insertion

of Matthew Boswell, Commissioner of Competition, that provokes further conversation. The play not only reveals the family drama of the unloved son Edward, who rises despite his father's wishes, but also puts the concept of corporate monopolies under the microscope, revealing their damaging impact on consumers. With Rogers take-over of Shaw, Boswell went head-to-head on this issue, and the play poses profound ethical questions. This story, constructed as a one-man show, is a tour-de-force for performer Tom Rooney, unpacking boardroom politics, as it collides with ambition, power and family.

With Apetagon's *In the Shadow Beyond the Pines*, the playwright was interested in exploring the genre of horror. Constructed as a kind of ghost story, three friends confront darker truths at a sacred fire for their friend, Warren. With echoes of *Stand By Me* they trace their relationship from childhood towards the struggles of navigating the world as adults. I am thrilled to bring this play, developed in Pimootayowin Creators Circle, led by Ian Ross, to the stage. May the play honour his memory, as it meets its audience.

Thank you for joining us and enjoy the show!

A handwritten signature in black ink, which appears to read 'Kelly'.

Royal Manitoba Theatre Centre is proud to call Manitoba home. Royal MTC is located in Winnipeg on Treaty 1, the traditional territory of the Anishinaabeg, Inninewak, Anishinewak, Dakota Oyate and Denesuline, and the National Homeland of the Red River Métis. We are thankful for the benefits sharing this land has afforded us, acknowledge the responsibilities of the Treaties, and embrace the opportunity to partner with Indigenous communities in the spirit of reconciliation and collaboration.



## THEATRE ABBREVIATION LEGEND

<b>A.C.T.</b> American Conservatory Theater • San Francisco, CA	<b>Rainbow</b> Rainbow Stage • Winnipeg, MB
<b>Arts Club</b> Arts Club Theatre Company • Vancouver, BC	<b>RNT</b> Royal National Theatre • London, England
<b>ATF</b> Atlantic Theatre Festival • Wolfville, NS	<b>Royal Alex</b> The Royal Alexandra Theatre • Toronto, ON
<b>ATP</b> Alberta Theatre Projects • Calgary, AB	<b>RSC</b> Royal Shakespeare Company • Stratford-upon-Avon, England
<b>BAM</b> Brooklyn Academy of Music • NYC	<b>RWB</b> Royal Winnipeg Ballet • Winnipeg, MB
<b>Bard on the Beach</b> Bard on the Beach Shakespeare Festival • Vancouver, BC	<b>Sarasvati</b> Sarasvati Productions • Winnipeg, MB
<b>Belfry</b> The Belfry Theatre • Victoria, BC	<b>Segal</b> The Segal Centre for Performing Arts • Montreal, QC
<b>Blyth</b> Blyth Theatre Festival • Blyth, ON	<b>Shaw</b> Shaw Festival • Niagara-on-the-Lake, ON
<b>Broadway</b> Theatre district • New York, NY	<b>SIR</b> Shakespeare in the Ruins • Winnipeg, MB
<b>CBC</b> Canadian Broadcasting Corporation	<b>Soulpepper</b> Soulpepper Theatre Company • Toronto, ON
<b>Centaur</b> Centaur Theatre Company • Montreal, QC	<b>Stratford</b> Stratford Festival • Stratford, ON
<b>Citadel</b> The Citadel Theatre • Edmonton, AB	<b>SummerWorks</b> SummerWorks Theatre Festival • Toronto, ON
<b>COC</b> Canadian Opera Company • Toronto, ON	<b>TA</b> Theatre Aquarius • Hamilton, ON
<b>CS</b> Canadian Stage • Toronto, ON	<b>Tarragon</b> Tarragon Theatre • Toronto, ON
<b>Dora</b> Dora Mavor Moore Award • Toronto, ON	<b>TBTR</b> Theatre by the River • Winnipeg, MB
<b>Drayton</b> Drayton Entertainment • Ontario	<b>TC</b> Theatre Calgary • Calgary, AB
<b>Dry Cold</b> Dry Cold Productions • Winnipeg, MB	<b>TiFT</b> Talk is Free Theatre • Barrie, ON
<b>Factory</b> Factory Theatre • Toronto, ON	<b>TNB</b> Theatre New Brunswick • Fredericton, NB
<b>GCTC</b> The Great Canadian Theatre Company • Ottawa, ON	<b>Toronto Free</b> Toronto Free Theatre • Toronto, ON
<b>Grand</b> The Grand Theatre • London, ON	<b>TPM</b> Theatre Projects Manitoba • Winnipeg, MB
<b>HGJT</b> Harold Green Jewish Theatre Company • Toronto, ON	<b>TSO</b> Toronto Symphony Orchestra
<b>Mirvish</b> Mirvish Productions • Toronto, ON	<b>U of M</b> University of Manitoba
<b>Moving Target</b> Moving Target Theatre Company • Winnipeg, MB	<b>U of T</b> University of Toronto
<b>MTPY</b> Manitoba Theatre for Young People • Winnipeg, MB	<b>U of W</b> University of Winnipeg
<b>NAC</b> National Arts Centre • Ottawa, ON	<b>ViC</b> The Village Conservatory for Music Theatre • Winnipeg, MB
<b>Necessary Angel</b> Necessary Angel Theatre Company • Toronto, ON	<b>VP</b> Vancouver Playhouse Theatre Company • Vancouver, BC
<b>Neptune</b> Neptune Theatre • Halifax, NS	<b>West End</b> Theatre district • London, England
<b>NFB</b> National Film Board of Canada	<b>WCT</b> Western Canada Theatre • Kamloops, BC
<b>NTS</b> National Theatre School of Canada • Montreal, QC	<b>WJT</b> Winnipeg Jewish Theatre
<b>Persephone</b> Persephone Theatre • Saskatoon, SK	<b>WSO</b> Winnipeg Symphony Orchestra
<b>PTAM</b> Popular Theatre Alliance of Manitoba • Winnipeg, MB	<b>WST</b> Winnipeg Studio Theatre
<b>PTE</b> Prairie Theatre Exchange • Winnipeg, MB	<b>YPT</b> Young People's Theatre • Toronto, ON
	<b>zone41</b> zone41 theatre • Winnipeg, MB

### OVATION

VOLUME 33, NUMBER 4  
FEBRUARY/MARCH 2026

Ovation is published six times per theatre season and has an approximate yearly circulation of 85,000.

PRINTING: Premier Printing Ltd.

#### ADVERTISING INQUIRIES

Christina Reuther  
TELEPHONE: 204 954 6413  
EMAIL: sales@royalmtc.ca



Royal Manitoba Theatre Centre  
174 Market Avenue  
Winnipeg, MB R3B 0P8  
Canada

RoyalMTC.ca

BOX OFFICE: 204 942 6537  
ADMINISTRATION: 204 956 1340  
FAX: 204 947 3741

Royal MTC is a member of the Professional Association of Canadian Theatres and engages professional Artists who are members of Canadian Actors' Equity Association under the terms of the jointly negotiated Canadian Theatre Agreement.

Scenery, Carpentry and Show Running Crew at the John Hirsch Mainstage and the Tom Hendry Warehouse are members of IATSE Local 63.

**USHERS** • Royal MTC's loyal volunteer ushers are available at every performance to assist patrons.

**LATECOMERS** • Latecomers will be seated at the discretion of the House Manager.

**COURTESY TO OTHERS** • Talking, candy wrappers and coughing are distracting to fellow patrons and actors. We ask each patron to please keep noise to a minimum during a performance. Thank you for your cooperation.

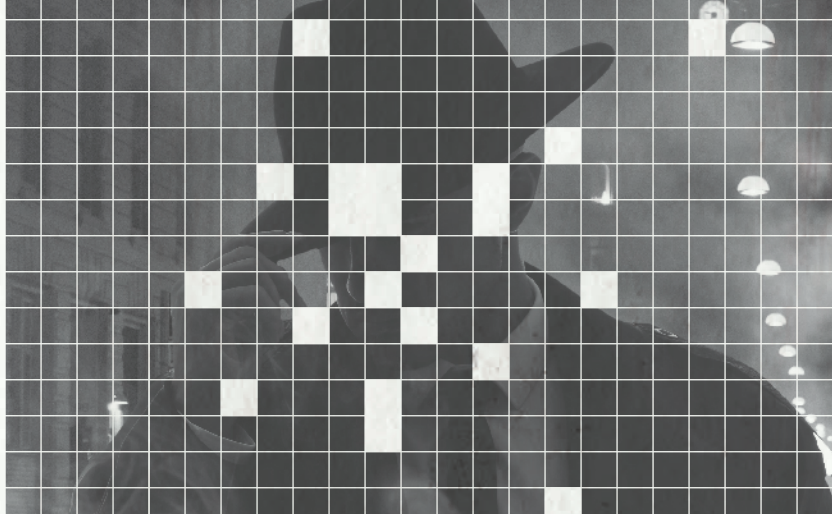
**SCENTS AND ALLERGIES** • A number of Royal MTC patrons have expressed concerns regarding medical reactions caused by scented products, so much so that they can't enjoy the show. Please consider others before using items such as colognes, perfumes and hairspray. Your thoughtfulness is appreciated.

**HEARING ENHANCEMENT** • FM Listening Devices are available free of charge in the lobby at the John Hirsch Mainstage and Tom Hendry Warehouse. Please see the House Manager for details.

**PROHIBITED** • The use of cameras and recording devices is strictly prohibited. Mobile devices must be turned off. To be contacted in an emergency, leave your name and seat number with the House Manager.

**WARNINGS** • On occasion, Royal MTC's productions may contain script-specific smoking of non-tobacco products, special effects and language/content warnings. For more information on specific productions, please visit royalmtc.ca.





# 26

DECLASSIFIED

# 27

SEASON

MAINSTAGE

■ **Cyrano de Bergerac**  
Oct 7-31 . 2026

■ **Anne of Green Gables -  
The Musical™**  
Nov 25-Dec 19 . 2026

■ **Intrepid**  
Jan 13-Feb 6 . 2027

■ **My Name is  
Lucy Barton**  
Feb 17-Mar 13 . 2027

■ **Waiting for Godot**  
Mar 24-Apr 17 . 2027

■ **fareWel**  
May 5-29 . 2027

WAREHOUSE

■ **Goblin:Macbeth**  
Oct 21-Nov 7 . 2026

■ **Comfort Food**  
Nov 18-Dec 5 . 2026

■ **Misery**  
Jan 27-Feb 13 . 2027

■ **Fifteen Dogs**  
Mar 3-20 . 2027

ROGERS V. ROGERS

# Playwright Acknowledgements

My thanks to Ari Cohen and Hannah Anderson for the use of their Picton house.  
If you're looking for a Prince Edward County getaway, search "The Nested Inn."  
It's a great spot.

Thanks to the Valleyview Artist's Retreat, where the first pages of the show were written.

Alexandra Posadzki's book, *Rogers v Rogers: The Battle for Control of Canada's Telecom Empire*, was so vividly written and contained such immaculate detail, I instantly saw the play that might be available inside it. Alexandra was incredibly generous with her time and research, and I can't thank her enough.

Vass Bednar consulted on competition policy in Canada, and provided a huge amount of information, context and vision on the subject every time we met.  
Her book with Denise Hearn, *The Big Fix*, was crucial to this project.

My thanks to the many people connected with the story who gave me their time.  
Most wanted to remain anonymous, all were generous and helpful.

There's nothing better than watching Tom Rooney work out in physical space a thing that previously existed only in your head. And with this project and the last one, Chris Abraham has delayed my inevitable slide into irrelevance. Thanks.

— Michael Healey ●

Tom Rooney in  
*Rogers v. Rogers*

PHOTO BY DAHLIA KATZ

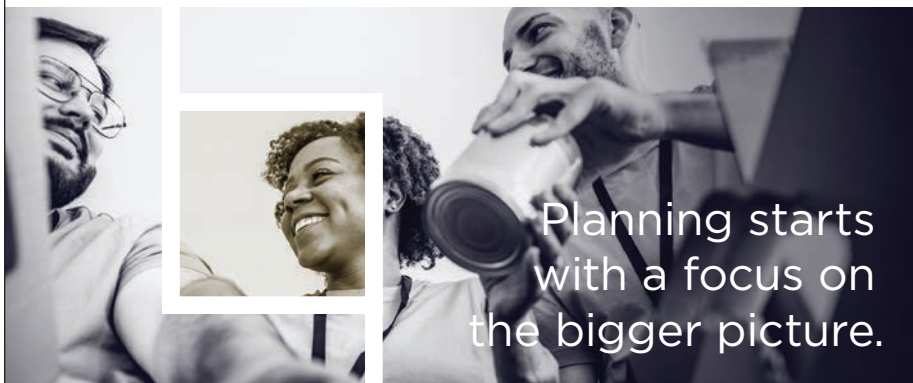




## Rogers v. Rogers

Taylor McCaffrey is proud to be the opening night sponsor of Royal MTC and gratefully acknowledges the rich contribution made by Manitoba's Arts Community to our province.

**TAYLOR**  
**McCAFFREY**  
LAWYERS



At Lawton Partners, we guide our clients with insight and experience. We believe it's important to be leaders in our community as well as in business.

You belong in the  
company of leaders.  
**lawtonpartners.ca**

 **Lawton Partners**  
WEALTH MANAGEMENT



# Characters and Mentions

**TED ROGERS, OR EDWARD ROGERS SR.** Passed away in 2008, founded the company in 1960. At the time of his death, Rogers was the fourth-richest Canadian, with a net worth of over \$7 billion, while the company was worth \$18 billion.

**MATTHEW BOSWELL** Commissioner of the Competition Bureau Canada.

**EDWARD ROGERS III** The son of Ted Rogers. At various points, served as chairman of the board of directors at Rogers, chairman of the Finance Committee, the Nominating Committee, and the Executive Committee, chairman of the Rogers Bank and the Toronto Blue Jays. Edward also served on the Board of Directors of Maple Leaf Sports & Entertainment and CableLabs.

**LORETTA ROGERS** Widow of Ted Rogers, and mother to Edward (Jr.), Melinda and Martha. Has served as a corporate director and is a member of the Advisory Committee of the Rogers Control Trust.

**MELINDA ROGERS** Sister to Edward and Martha, retired from the Rogers Communication Board of Directors in 2024. She joined the Rogers board in 2002 and became Deputy Chair in 2018.

**MARTHA ROGERS** Younger sister to Edward and Melinda, retired from the Rogers Communication Board of Directors in 2024. She joined the board in 2008 and served as chair of Rogers' Environmental, Social, Governance (ESG) Committee.

**EDUARDO** Butler to the Rogers family.

**SUZANNE ROGERS** Edward's wife.

**MRS. BOSWELL** Matthew Boswell's wife.

**KANE PUTNAM** Texan, runs a cable company.

**NADIR MOHAMED** Named president of Rogers Wireless division in 2000, then president and COO of the Communications Division of Rogers from 2005 to 2009, at which point he was named CEO of RCI.

**GUY LAURENCE** From London, England. RCI CEO from 2013 to 2016.

**DAVID PETERSON** Former Premier of Ontario, old friend of Ted's, on the Rogers board since 1990.

**JOE NATALE** Joined Rogers Communications Inc. (RCI) as President and CEO in April 2017. Prior, served at Telus Corporation from 2003 to 2015 including as President and CEO.

**ANTHONY STAFFERI** Was the CFO at RCI until he resigned in late September 2021.

**MINISTER CHAMPAGNE** Francois-Phillipe Champagne was the Minister of Innovation, Science and Industry.

**JUSTICE PAUL CRAMPTON** Presided over an antitrust case against Rogers' takeover of Shaw.

**BAY STREET GUY** A Toronto businessman.

**TRIBUNAL GUY** Present at the hearing about the Rogers-Shaw merger. ●

# UPTOWN<sub>F+B</sub>

## RESTAURANT AND WINE BAR

Contemporary cuisine, an elevated  
wine list & eclectic cocktails with  
Free Valet Parking at the iconic  
Portage and Main.

204.938.8696 | [529uptownwpg.com](http://529uptownwpg.com)

Hours: Monday, 11:30 a.m. – 3 p.m.

Tuesday – Friday, 11:30 a.m. – 8 p.m.

Complimentary Valet Parking



## Real food from the land...

At Peasant Cookery we have a passion for  
transforming fresh ingredients into original and trend-  
forward cuisines. Our rustic, seasonally inspired menu,  
famous housemade charcuterie, combined with  
exceptional service and inviting bistro atmosphere  
are an experience not to be missed.



100-283 Bannatyne 204.989.7700

PRESENTS

A CROW'S THEATRE PRODUCTION

# Rogers v. Rogers

Adapted for the stage by Michael Healey

Based on *Rogers v. Rogers: The Battle for Control of Canada's Telecom Empire* by Alexandra Posadzki

February 19 – March 14, 2026

PREVIEW February 18

## STARRING

Tom Rooney

Director..... Chris Abraham  
Set Designer .....Joshua Quinlan\*\*  
Lighting Designer .....Imogen Wilson\*\*  
Sound Designer ..... Thomas Ryder Payne  
Video Designer ..... Nathan Bruce\*\*  
Dialect Coach .....Chloë Dirksen  
Costume Coordinator .....Elaine May  
Assistant Director ..... Bryn Kennedy  
Stage Manager .....Melissa Rood  
Replacement Stage Manager.....Zahra Larche  
Apprentice Stage Manager .....Darlene Dela Cruz†

*Rogers v. Rogers* is performed without an intermission.

*Rogers v. Rogers* was originally commissioned, developed, and world premiered by Crow's Theatre,  
Chris Abraham, Artistic Director; Sherrie Johnson, Executive Director.

*Rogers v. Rogers* is staged by arrangement with Pam Winter, GGA, ggagency.ca.

Production photography by Dahlia Katz.

**SYNOPSIS** – What happens when the company you have prepared your entire life to inherit is suddenly denied from your grasp? That is what Edward Rogers, son of CEO Ted Rogers, discovers in this retelling of the rise of the Rogers empire which turned Canada's airwaves into cash. While fighting to take control of the family business, Edward must eventually navigate a new opponent – Matthew Boswell, Canada's Commissioner of Competition, who is spearheading a legal battle against the Rogers' company and its merger with Shaw Communications. Bringing to life the many individuals impacted by the company and family, the question arises – what is the price of pushing back against the system, and the legacy that money can – and cannot – buy? ●

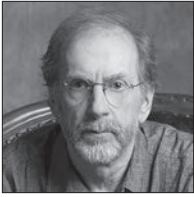
\*\*Indicated designers on this production are represented by the Associated Designers of Canada, IATSE Local ADC659

\*Position funded through the Jean Murray - Moray Sinclair Theatre Apprenticeship Program

†Past Jean Murray - Moray Sinclair apprenticeship or scholarship recipient



## ROGERS V. ROGERS



**Tom Rooney**  
*Performer*

**ROYAL MTC** *The Seagull.*

**OTHER THEATRE** *Someone Else* (Dora Award), *The Seagull*, *The Wedding Party* (Crow's); 12 years at the Stratford Festival; *Cyrano de Bergerac*, *Victory*, *The Apple Cart*, *My Fair Lady* (Shaw); *Rice Boy*, *My Mother's Feet*, *Homechild*, *Tartuffe* (CS); *Hairspray* (Toronto and Broadway); *Benevolence*, *Courageous* (Tarragon); *Hamlet* (NAC); Robert Lepage's *Romeo et Juliette* (Shakespeare on the Saskatchewan); *I Am My Own Wife* (VP); *Who's Afraid of Virginia Woolf?* (Citadel - Sterling Award); *Angels in America* (ATP). Upcoming: *Amadeus* and *Heartbreak House* at the Shaw Festival this year.

**FILM/TV** *This Is Wonderland*, *The Gilda Radner Story*, *The Day After Tomorrow*, *Strays*, *Transplant*, *Coroner*, *Under the Banner of Heaven*, *Guillermo del Toro's Cabinet of Curiosities*.



**Michael Healey**  
*Playwright*

Michael Healey spent a decade as an actor before writing his first play. His second play, *The Drawer Boy*, was a surprise success and gave him eight years of runway to learn how to write. He needed every minute. Plays from this period include *Generous*, *Courageous*, *Proud*, *The Innocent Eye Test*, *Plan B* and *Rune Arlidge*. Recent plays include *1979*, *Are You Okay* and *The Master Plan*, which premiered at Crow's in 2023. In all, his plays have won the Dora Mavor Moore Award for best new play six times. He has adapted works by Chekhov, Molnar, and Hecht & MacArthur for Stratford, Shaw and Soulpepper. He lives in Toronto and still acts occasionally.

### CROW'S THEATRE

Resonating with Toronto's civic, community and cultural milieu – Crow's Theatre at Streetcar Crowsnest adapts and evolves as the social, economic, cultural environment of the city adapts and evolves.

Crow's Theatre is distinguished as a preeminent cultural destination for its far-reaching imagination, ideas, exchange, diversity and grassroots belief in how artists and their work can change and sustain the life of communities. Crow's Theatre is accessible to people of all backgrounds and ages. Crow's Theatre is a catalyst in the community focusing on transformative experiences in unexpected places through the universality of the arts.

In our home at Streetcar Crowsnest, Crow's Theatre is a unique addition to the ecology of Toronto's non-profit arts scene, filling a long-standing need for a year-round venue in the East End of Toronto.

[crowstheatre.com](http://crowstheatre.com)

For a complete list of theatre abbreviations, please refer to legend on page 4



**Alexandra Posadzki**

*Author*

Alexandra Posadzki is an award-winning business journalist at *The Globe and Mail*, where she writes about financial and cyber crime. She is the author of the instant national bestseller *Rogers v. Rogers: The Battle for Control of Canada's Telecom Empire*, which won the 2025 National Business Book Award. Her coverage of the dramatic power struggle at Rogers Communications Inc. was recognized with several Canada Best in Business Awards from the Society for Advancing Business Editing and Writing, including gold medals in the "scoop" and "beat reporting" categories.



**Chris Abraham**

*Director*

**ROYAL MTC** *Chimerica* (with CS), *The Shape of Things*, *I, Claudia*.

**OTHER THEATRE** *Octet*, *Wights*, *Rosmersholm*, *Natasha*, *Pierre & The Great Comet of 1812*, *The Master Plan*, *Uncle Vanya*, *MixTape*, *As You Like It*, *Julius Caesar*, *Stars: Together*, *The Wedding Party*, *True Crime*, *The Boy in the Moon*, *The Assembly*, *The Watershed*, *The Seagull*, *Winners and Losers*, *Someone Else*, *Eternal Hydra* and *I, Claudia* (Crow's); *One Man, Two Guvnors*, *Cyrano de Bergerac* (Shaw); *Much Ado About Nothing*, *Tartuffe*, *The Taming of the Shrew*, *A Midsummer Night's Dream*, *Othello*, *The Matchmaker*, *The Little Years*, *For the Pleasure of Seeing Her Again* (Stratford); *Seeds* (Crow's/Porte Parole); *Macbeth* (Bard on the Beach).

**FILM/TV** Shakespearean Coach for *Station Eleven* (HBO); Gemini Award-winning film adaptation of *I, Claudia*.

**TRAINING** University of Toronto, National Theatre School of Canada.

**ET CETERA** Artistic Director of Crow's Theatre since 2008, leading the company through major milestones including opening Streetcar Crowsnest in 2017 and last season's 40th anniversary; recipient of the Elinor and Lou Siminovitch Prize in Theatre; served as co-director of NTS's renowned directing program. IG: @crowstheatread



**Joshua Quinlan**

*Set Designer*

**ROYAL MTC** Set & Costume Designer: *Casey and Diana* (with TA).

**OTHER THEATRE** (selected) *Octet*, *Natasha*, *Pierre & the Great Comet of 1812*, *Uncle Vanya*, *The Master Plan*, *Rosmersholm*, *Wights* (Crow's); *Casey and Diana*, *Every Little Nookie* (Stratford); *Hamlet* (CS); *Million Dollar Quartet* (Grand); *Hedda Gabler*, *Yerma* (Coal Mine); *The Sound of Music*, *The Music Man* (Thousand Islands Playhouse); *Waitress*, *Little Shop of Horrors* (Port Hope); *The Drawer Boy*, *My Hero* (Port Stanley Festival Theatre); *An Enemy of the People*, *Don Giovanni*, *Stupid F\*cking Bird* (Ohio State University).

**TRAINING** MFA Theatre - Design, The Ohio State University; BA Honours Drama, University of Windsor.

**ET CETERA** Siminovitch Protégé Designer, Dora Award Winner.



# Kevin's

## BISTRO

A vibrant dining experience in the heart of Winnipeg's Exchange District **with weekly live music!**

**141 Bannatyne Ave., Winnipeg**

For Reservations, visit [opentable.com](http://opentable.com) or call us at 204.221.5028

[kevinsbistro.ca](http://kevinsbistro.ca)

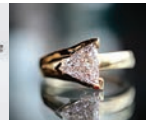
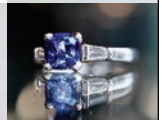


**| D | I | A | M | O | N | D |**  
**| G | A | L | L | E | R | Y |**

**1735 CORYDON AVENUE**

Locally owned and operated by the Malbranc family since 1992. Specializing in Canadian crafted custom designs and responsibly sourced gemstones. Shop online 24/7 or contact us to book your professional jewellery consultation.

**DIAMOND-GALLERY.COM**







**Imogen Wilson**  
*Lighting Designer*

**ROYAL MTC** First engagement.

**OTHER THEATRE** Lighting Designer: *Rosmersholm* - Dora nominated for best lighting design, *Octet*, *Wights* (Crow's); *Fifteen Dogs* (Crow's/Mirvish/NAC); *Old Times* (Soulpepper); *As You Like It* (Stratford); *Miss Bennet: Christmas at Pemberley*, *Ghost! The Musical* (Cheminus Theatre); *Interior Design* (Tarragon). Assistant Lighting Designer: *Natasha, Pierre & the Great Comet of 1812*, *The Masterplan*, *Uncle Vanya*, *Fifteen Dogs* (Crow's). Upcoming projects: *Primary Trust* (Grand/Crow's); *The Tempest*, *The Importance of Being Earnest* (Stratford); *One for the Pot* (Shaw).

**TRAINING** University of Victoria and Bangkok University.

**ET CETERA** Thank you to this team and my team.



**Thomas Ryder Payne**  
*Sound Designer*

**ROYAL MTC** *Chimerica* (with CS), *Kim's Convenience*.

**OTHER THEATRE** *Comfort Food*, *Wights*, *Rosmersholm*, *shaniqua in abstraction*, *Bad Roads*, *The Master Plan*, *Perceptual Archaeology*, *Red Velvet*, *Uncle Vanya*, *Orphans for the Czar*, *MixTape*, *Julius Caesar*, *A&R Angels*, *The Boy in the Moon*, *The Wedding Party*, *The Watershed*, *Someone Else* (Crow's); and designs for Stratford, Shaw, Mirvish, Soulpepper, Canadian Stage, Tarragon, Factory, TPM,

YPT, Modern Times, Aluna, Buddies in Bad Times, Theatre Gargantua, Nightwood, Toronto Dance Theatre, NAC, Centaur, Theatre Calgary, GCTC and many others.

**FILM/TV** *Plain View*, *7A*, *Blood Harvest*, *Hero. Traitor. Patriot*, *Alegra & Jim*, *Robert's Circle*.

**TRAINING** Studied composition with James Tenney, Honours BA, York University.

**ET CETERA**

thomasryderpayne.bandcamp.com,  
xeno-canto.org



**Nathan Bruce**  
*Video Designer*

**ROYAL MTC** First engagement.

**OTHER THEATRE** Video Designer: *Octet*, *Wights*, *Natasha, Pierre & the Great Comet of 1812* (Crow's). Lighting Designer: *Tapestry Briefs 2025* (Tapestry Opera); *Reina* (Pencil Kit); *18 Jews Order Chinese Food* (Persephone). Co-Projection Design: *Feed-Back* (Dancemakers). Lighting and Projection Design: *The Tender Land* (Toronto City Opera). Associate Lighting Design: *Copperbelt* (NAC); *Shedding a Skin* (Nightwood/Buddies). Projection Design: *The Magic Flute* (Royal Conservatory/ Glenn Gould School).

**TRAINING** BFA in Theatre Production and Design (York University); Design Incubator Pilot Project.

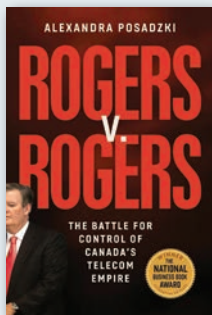
**ET CETERA** New Media Installations: *Try to Forget* (Long Winter); *After the Flood* (Charles Street Video); *Love Across Distance* (Nuit Blanche). nathanbrucedesigns.com



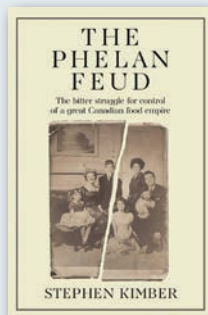
**MCNALLY  
ROBINSON**

# Recommended Reading

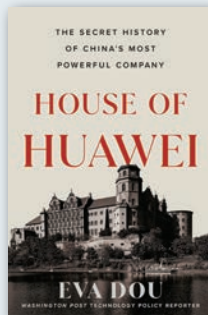
inspired by *Rogers v. Rogers*



**Rogers v. Rogers**  
by Alexandra Posadzki



**The Phelan Feud: The Bitter Struggle  
for Control of the Family Firm**  
by Stephen Kimber



**House of Huawei**  
by Eva Dou

**McNally Robinson Booksellers**  
1120 Grant Avenue · The Forks · [mcnallyrobinson.com](http://mcnallyrobinson.com)

WHEN YOU SUPPORT US, YOU SUPPORT OUR COMMUNITY



**MCNALLY  
ROBINSON**



**Chloë Dirksen**  
*Dialect Coach*

**ROYAL MTC** First engagement.

**OTHER THEATRE** Acting: *This Wide Night* (The John Drew Theatre); *The Scarlet Letter*, *Death of a Salesman*, *The Crucible* (Bay Street Theatre); *Honour Killing* (Cherry Lane Theatre); *Conviction* directed by Scott Schwartz.

**TV** Most recently served as Production Dialect Coach for *Interview with the Vampire* (AMC).

**TRAINING** Chloë trained at Circle in the Square Theatre School, and has a BA in Literature and Linguistics from U of T.

**ET CETERA** Chloë is a dialect coach and actress. Her dialect work has garnered a New York Innovative Theatre Award and acclaim in NY Times. Represented by NCA. [chloedirksen.com](http://chloedirksen.com)



**Elaine May**  
*Costume Coordinator*

**ROYAL MTC** First engagement.

**OTHER THEATRE** *Fifteen Dogs*, *The Bidding War*, *Flex*, *Comfort Food* (Crow's); many seasons with YPT and Soulpepper. Favourites include *Hana's Suitcase*, *A Year with Frog and Toad*, *King Lear*, *A Christmas Carol*. Upcoming projects: *Mary, Mary*, *Mary, Mary* (Crow's).

**FILM** *Little Moments*.

**TRAINING** BFA in Theatre Production from York University.

**ET CETERA** Elaine is a certified childbirth educator and doula, and when not doing

theatre, she teaches prenatal and infant care classes. Thank you to my hugely supportive family.



**Bryn Kennedy**  
*Assistant Director*

**ROYAL MTC** First engagement.

**OTHER THEATRE** (selected) Apprentice Directing: *Natasha, Pierre & the Great Comet of 1812* (Crow's). Directing: *JANE* (Tarragon/Pantheon Projects); *Mary Stuart* (Stratford Directors Workshop Projects); *Beneath the Bed* (Theatre Born Between); *Vitals* (Theatre Born Between – nominated for Outstanding Solo Performance, My Entertainment World Awards). Assistant Directing: *Ransacking Troy*, *Hamlet* (Stratford); *UNCOVERED Concert* (Musical Stage Co.); *Withrow Park* (Tarragon); *A Bear Awake in Winter* (Next Stage Theatre Festival). Upcoming Directing: *The Moors* (Riot King).

**FILM/TV** Co-Producer: *Save the Date* and *Alice Is Fine*. Actor: *Coroner* (CBC); *V-Wars* (Netflix); *Everything is Going to be Great* (eOne).

**TRAINING** Theatre and Drama Studies at Sheridan College and the University of Toronto.

**ET CETERA** Jean Gascon Award for Emerging Director (Stratford Festival Guthrie Awards). Every show is for M & D & Matt – you make it all possible. [@brynkennedy](https://twitter.com/brynkennedy)

# tiny beautiful things

Based on the  
book by

**Cheryl Strayed**

Adapted for  
the stage by

**Nia Vardalos**

Co-Conceived by Marshall Heyman, Thomas Kail, and Nia Vardalos



PTE.MBCA

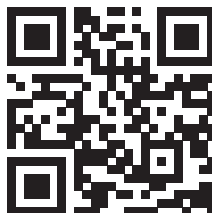
**APRIL 7 – 19, 2026**

*An advice columnist discovers the  
healing power of radical empathy*

## ***SIGN UP AND CHOOSE YOUR WELCOME OFFER UP TO \$250\****

Visit **PlayNow.com/mb/register** or scan the QR code  
for details. Offer expires March 31, 2026.

\*Conditions apply.



**PLAY  
NOW**

**CASINO  
SPORTS  
LOTTERY**

**18+** | ENJOY  
RESPONSIBLY





**Melissa Rood**  
Stage Manager

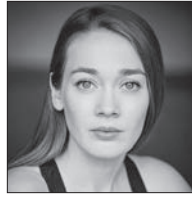
**ROYAL MTC** First engagement.

**OTHER THEATRE** *The Wedding Party* (Crow's/NAC); *Stars: Together, Julius Caesar, Chew, The Master and Margarita, Digital Assembly* (Crow's); *Coriolanus, Macbeth* directed by Robert Lepage, *Much Ado About Nothing* directed by Chris Abraham (Stratford); Walter Bordon's *The Last Epistle of Tighrope Time* (NAC); Christopher Plummer's *A Word or Two* (Stratford/Ahmanson Theatre, LA); *The Carousel* with Allegra Fulton (Nightwood); theatre, opera, dance, concerts, stadium events; new works, classics and offerings of every kind – from solo acts to casts of thousands. Upcoming projects: *Othello* (Stratford – 26th Season).

**FILM/TV** *Leer Estates, Shorty* (Script Supervisor); *Poor Tom* (exploring virtual reality with Groundling Theatre); and occasional uncredited voiceover work.

**TRAINING/TEACHING** Trained at Sheridan College (Technical Production) and University of Waterloo (Social Work). Stage management instructor at University of Windsor, University of Toronto, National Theatre School, Sheridan College and Director of the Stratford Festival's summer technical production camp.

**ET CETERA** Thank you, Tom. Being asked is an honour.



**Zahra Larche**  
Replacement Stage Manager

**ROYAL MTC** Stage Manager: *Indecent, The Recipe* (with TPM), *Sexual Misconduct of the Middle Classes*. Assistant Stage Manager: *Murder on the Orient Express, Beautiful: The Carole King Musical* (with Segal), *The Sound of Music* (with Citadel), *Into the Woods, Network* (with Citadel), *Calpurnia* (with NAC/BTW), *Bang Bang* (with Belfry). Apprentice Stage Manager: *Buying the Farm* (tour), *Roald Dahl's Matilda The Musical, Vietgone* (with fu-GEN/Hope and Hell), *The Humans*. Assistant Production Manager (2017/18, 2020/21, 2021/22 seasons).

**OTHER THEATRE** Stage Manager: *Rock of Ages, Mary Poppins, The Hockey Sweater* (Rainbow); *Serving Elizabeth, The Outside Inn* (PTE). ASM: *Volare* (PTE). Various credits with Dry Cold, Hudson Village Theatre, Manitoba Opera, Geordie Productions and A Company of Fools.

**TRAINING** Graduate of the National Theatre School of Canada – Production Program (2017).

**ET CETERA** Special thanks to my MTC family, my parents, Ilana, Jenna, Brooklyne, Liam and Paul!



## Enrich Your Experience!

Do you want to delve deeper into the themes of the play? For every show we release an enrichment guide with help from experts and educators. This guide offers background context, resources to explore and discussion questions to keep the conversation going. Read them at [royalmtc.ca/enrichmentguides](http://royalmtc.ca/enrichmentguides).

## ROGERS V. ROGERS



### Darlene Dela Cruz

*Apprentice Stage  
Manager*

**ROYAL MTC** Apprentice Stage Manager: *Life of Pi*. Assistant Lighting Designer: *The Man Who Came to Dinner* (MBA/Lawyers Play).

**OTHER THEATRE** Stage Management: *The Gallery Wall* (Winnipeg Fringe Festival); *Oh, the Humanity* (U of W). Other: *The Undeniable Accusations of Red Cadmium Light* (PTE); PAGBUO: A Story Building Workshop (UNIT Productions); *MA-BUHAY! A New Musical* (Rainbow); Winnipeg Fringe Festival.

**TRAINING** University of Winnipeg Theatre and Film Department.

**ET CETERA** Jean Murray – Moray Sinclair Apprenticeship recipient. Thank you to my family and friends for their support. Enjoy the show! ●

ROYAL  
**MTC**  
MANITOBA THEATRE CENTRE

Groups  
of 10  
or more  
**SAVE!**

Contact Christina Reuther  
to learn more or book today!

royalmtc.ca | 204 954 6413  
sales@royalmtc.ca

EAT - EXPERIENCE - EXPLORE

Plan your  
next trip to  
*Doha*



**BON  
ADVENTURE**  
TRAVEL

bonaventuretravel.ca

204-488-6653

428 Academy Road,  
Winnipeg, MB R3N 0C3



# EXPLORE MORE Rogers v. Rogers

## EXPLORE MORE ROGERS

### **Rogers v. Rogers by Alexandra Posadzki.**

Get the full story of Edward Rogers in the book the play was based on, exposing the most specular boardroom and family drama in Canadian corporate history.

384.06571 POSADZKI 2024

**Right Hand Man by Phil Lind.** Get to know Phil Lind, the behind-the-scenes advisor who guided Ted Rogers, father of Edward Rogers, for over 40 years, telling the inside story of how Rogers chose the best ideas and made them work. B LIND 2018

## EXPLORE MORE CORPORATE NON-FICTION

### **Corporate Control by Nora Loreto.**

Dive deep into the rise of corporate power in Canadian life, and why politicians seem unable to turn back the tide of the increasing corporate power in just a handful of businesses. From Telecoms like Rogers, to mining, oil, or groceries, corporate profits keep rising as the divide between rich and poor widens.

306.340971 LORETO 2025

### **Billion Dollar Whale by Tom Wright and Bradley Hope.**

Follow along as two prize-winning journalists document the true story of one of history's biggest financial heists at the intersection of wealth, banking and politics. Jho Low,

an innocuous graduate of Wharton Business School, siphoned billions from an investment fund and used those funds to throw lavish parties, purchase pricy real estate, and even finance the film *The Wolf of Wall Street*.

364.163092 LOW 2018

### **Barbarians at the Gate: The Fall of RJR Nabisco by Bryan Burrough.**

Dig into another high-stakes story of corporate powerplays as F. Ross Johnson, then CEO of RJR Nabisco, tries to buy out the rest of the Nabisco shareholders.

338.83664 BURROUGH 2009

## EXPLORE MORE CORPORATE FICTION

**Dunbar by Edward St. Aubyn.** Join recently retired media tycoon Henry Dunbar as he tries to hold onto his corporate empire, having been sent off to a sanatorium by his greedy elder daughters hoping to seize his assets. His youngest daughter and a trusted advisor attempt to unwind the conspiracy, in this novel inspired by Shakespeare's *King Lear*. FICTION ST. AUBYN ●



There are 1.4 million books, movies, audiobooks, eBooks, and more at the Winnipeg Public Library, and all you need to borrow them is your library card. There are 20 locations throughout the city, and there's an online catalogue for requesting items for pick-up at your library of convenience. An online e-Library has thousands of eBooks, eAudiobooks and more! All free to use with your library card. Visit us online at [winnipeg.ca/library](http://winnipeg.ca/library).

Embracing the  
magic of live theatre,  
and applauding the  
joy it brings to our  
community.

THE  
**Free Press**

PROUD PARTNER OF ROYAL  
**MTC**  
MANITOBA THEATRE CENTRE



To subscribe call 204-697-7001  
or visit [winnipegfreepress.com/subscribe](http://winnipegfreepress.com/subscribe)





## The Sacred Fire

BY JHAIK WINDY HAIR

To many Indigenous Peoples across Turtle Island, the fire has been Sacred. Fire brings life and also provides light in darkness. In ceremony, fire is a foundation to which all begins, and all ends. Sacred Fire is essential to our survival.

Fire begins the day for tasks such as cooking and the like. Fire also ends the day as it is allowed to burn out for all to sleep. Sacred Fire provides warmth in the cold winter months.

Funeral services have a fire immediately lit once it has been learned that someone has left Mother Earth. Fire keepers keep the flames continually burning throughout funeral service. It is understood to be a guiding light for those on their last journey. Many say it is a portal to which our Spirit returns from where one came to be here on Mother Earth. Most services are usually held four days after the Spirit has left the body. Fire is allowed to burn to conclusion on the last day once services have been completed. ●

**SYNOPSIS** – Following the death of their friend, Dale, Shane and George take on the duty of honouring Warren's life with a sacred fire in the forests of Northern Manitoba. Although inexperienced and lacking traditional knowledge, the three friends brave the elements together sharing jokes and memories of their past. Little do they know, they are not alone. As the night carries on, shadows of their past and present come alive...and with them the horrors found only in the darkness of night. ●



Proud supporter of the  
Royal Manitoba Theatre Centre.

**Bell**MTS



## Playwright's Notes

BY RHONDA APETAGON

The stories that I grew up listening to were not fairy tales. They were dark, fantastical and deeply human. In the quiet months, when the snow blanketed the earth and the days were short, my father would share legends passed down through generations. Mostly, he talked of Wesakechak and the dramas that played out between the animals. But when the wind howled and the fire in the wood stove burned bright, he'd tell us about Wihtikow, the cannibal spirit that roamed the land, and the power of those who stood against it. Tucked into these legends were teachings about generosity, kindness and the importance of caring for one another,

although it was not until I got older that I began to understand them as more than just scary stories. With an education in social work and my years of service in the field of child welfare, I also began to understand the deep pain that has kept these legends relevant. The history of First Nations in Canada is dark, and as we try to make sense of senseless cruelty, our legends offer guidance even in the darkest places.

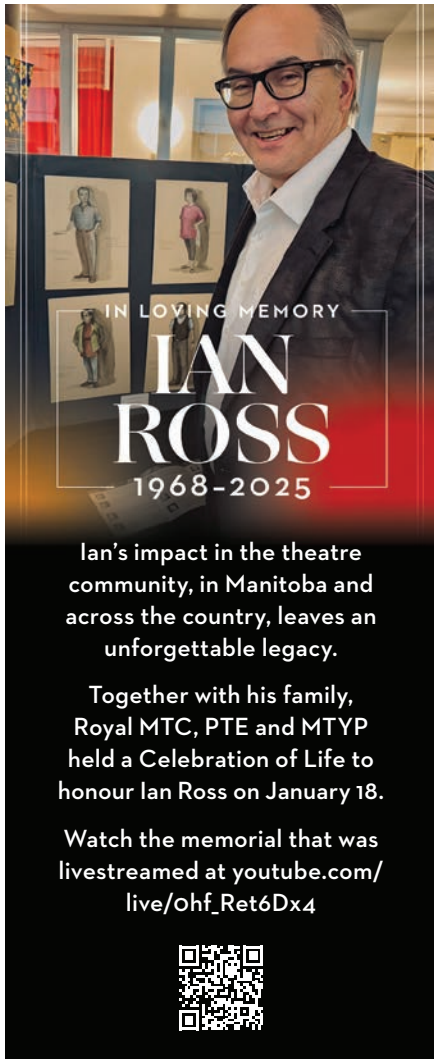
I believe for something to be truly scary it need not be explicit. The shifting darkness at the edge of the campfire, the echo of whispers in an empty room, the feeling of being watched when you're doing laundry alone in the basement. These experiences are as intangible as they are disturbing. And while I hope that you enjoy this foray into the forest, please remember... without light there are no shadows, only darkness.

*In the Shadow Beyond the Pines* was an idea that found roots in MTC's Pimootayowin Creators Circle, led by late Governor General Award-winning playwright Ian Ross. A gifted storyteller and teacher, Ian was a mentor who truly believed in the importance of Indigenous stories. The sudden and unexpected loss of our dear friend has really driven home the finite nature of time, and the infinite nature of art; to create is to be alive, and to share what we create with others is to be remembered. His memory and the body of creative work that he left behind will continue to light the way for Indigenous storytellers for many years to come.

## IN THE SHADOW BEYOND THE PINES

Thank you to the many dedicated and talented individuals at Royal MTC and the Tom Hendry Warehouse for bringing this story to life. Special thanks to Kelly Thornton and Melissa Langdon, who have been there since the beginning, Jimmy Blais, who understood the vision, Ryan Black, for being an inspiration, and to my husband Ryan, for his unwavering support.

Ekosi, God Bless. ●




IN LOVING MEMORY  
**IAN ROSS**  
1968-2025

Ian's impact in the theatre community, in Manitoba and across the country, leaves an unforgettable legacy.

Together with his family, Royal MTC, PTE and MTYP held a Celebration of Life to honour Ian Ross on January 18.

Watch the memorial that was livestreamed at [youtube.com/live/ohf\\_Ret6Dx4](https://youtube.com/live/ohf_Ret6Dx4)



## Pimootayowin

A FESTIVAL OF NEW WORK

*A journey through  
Indigenous storytelling*

**JUNE 2026\***

Tom Hendry Warehouse  
(140 Rupert Ave.)

**FREE ADMISSION**

*Readings of new works by:*

Arlea Ashcroft

Liz Barron

Michael Hutchinson

Curtis Kaltenbaugh

April Seenie

Jordan Wheeler

Kim Wheeler

\*Exact dates and times to be confirmed



PHOTO BY LEIF NORMAN

RoyalMTC.ca



PRESENTS

# In the Shadow Beyond the Pines

By Rhonda Apetagon

March 12 – 28, 2026

PREVIEW March 11

Director / Dramaturg ..... Jimmy Blais  
Set Designer ..... Adam Parboosingh\*\*  
Costume Designer ..... Amy McPherson  
Lighting Designer ..... Kahentanó:ron Brianna Montour  
Sound Designer & Composer ..... Jason Burnstick  
Knowledge Keeper ..... Jhaik Windy Hair  
Cultural Support ..... Erin McGregor  
Apprentice Director ..... Key Caguioa\*\*  
Stage Manager ..... Samantha Desiree  
Apprentice Stage Manager ..... Carolin Schroeder†

## THE CAST (IN ALPHABETICAL ORDER)

Shane ..... Daniel Knight  
Dale ..... Jeremy Proulx  
George ..... James Dallas Smith

*In the Shadow Beyond the Pines* is performed with one intermission.

*In the Shadow Beyond the Pines* was originally developed by the  
Royal Manitoba Theatre Centre through the Pimootayowin Creators Circle.

We acknowledge the following artists who contributed to the development of *In the Shadow Beyond the Pines*:  
Ryan Black, Jimmy Blais, Eric Coates, John Cook, Gabriel Daniels, Philip Geller, Todd Houseman, Danny Knight,  
Madyson Richard, Ron Pederson and James Dallas Smith.

Production photography by Dylan Hewlett.

\*\*Indicated designers on this production are represented by the Associated Designers of Canada, IATSE Local ADC659.

\*Position funded through the Jean Murray - Moray Sinclair Theatre Apprenticeship Program

†Past Jean Murray - Moray Sinclair apprenticeship or scholarship recipient

## IN THE SHADOW BEYOND THE PINES



**Daniel Knight**

*Shane*

**ROYAL MTC** First appearance.

**OTHER THEATRE** *This is How We Got Here* – nominated for Outstanding Performance (Persephone); *Powwow: A Theatrical Production* (Gordon Tootoosis Nikaniwin Theatre); *Thunderstick* (Globe Theatre); *Hawk or How He Plays His Song* (Onelight Theatre).

**FILM/TV** Host on *The Feather News* (APTN); Tim Fontaine in *Acting Good* (CTV).



**Jeremy Proulx**

*Dale*

**ROYAL MTC** *The Secret to Good Tea*.

**OTHER THEATRE** *Of Mice and Men* (Maples Rep Theatre); *Where the Blood Mixes* (Teesri Duniya Theatre); *The Ecstasy of Rita Joe* (WCT/NAC); *King Lear* (NAC); *Only Drunks and Children Tell the Truth* (Magnus Theatre); *Crazy Dave Goes To Town* (Centre for Indigenous Theatre); *Red Forest* (The Young Vic); *One Flew Over the Cuckoo's Nest* (Alliance Theatre/Crucible Theatre/Flint Rep Theatre); *Cottagers and Indians* (Persephone/Thousand Islands Playhouse); *Feather Gardens* (Hudson Village Theatre); *Salt Baby* (TA); *Beautiful Scars: The Musical* (TA/upcoming NAC); *Mischief* (Neptune/Tarragon).

**TRAINING** York University – BFA Honours (Film & Video). Centre for Indigenous Theatre's (CIT) full-time conservatory – Indigenous Theatre School.

**ET CETERA** META Award nomination for *Feather Gardens* (Hudson Village Theatre),

a Wilde Award (Flint Rep Theatre) and Broadway World Award (Alliance Theatre), both for his role in *One Flew Over the Cuckoo's Nest*. Jeremy is originally from the community of Neyaashiinigmiing, Ontario. Chi-Miigwetch! jeremy-proulx.com



**James Dallas Smith**

*George*

**ROYAL MTC** Michael in *The Secret to Good Tea*.

**OTHER THEATRE** *Almighty Voice and His Wife* – Dora Nomination for Outstanding Performance, *Where the Blood Mixes*, *King Lear*, *Our Town* (Soulpepper); *Hamlet* (CS); *The Secret to Good Tea* (Grand/NAC); *The Donnelly's Trilogy*, *Quiet in the Land*, *Sir John A: Acts of a Gentrified Ojibway Rebellion*, *Powers and Gloria*, *Cottagers and Indians*, *Ipperwash* (Blyth); *This is How We Got Here* (Native Earth Performing Arts).

**TV** Two seasons as Garth on the cult television series *Metropia*.

**ET CETERA** James Dallas Smith is a performer with Ohsweken Mohawk (Turtle Clan) from the Six Nations of the Grand River and Scottish/Irish heritage. He's thrilled to be returning to Royal MTC.

For a complete list of theatre abbreviations, please refer to legend on page 4

## IN THE SHADOW BEYOND THE PINES



### Rhonda Apetagon

Playwright

Rhonda Apetagon is an Indigenous playwright and artist from Northern Manitoba. A proud member of Norway House Cree Nation, she focuses on bringing authentic Indigenous stories and northern lore to the stage. Her work is characterized by atmospheric storytelling and deep explorations of community and connection. In developing the concept for *In the Shadow Beyond the Pines*, she participated in the Pimootayowin Creators Circle under the mentorship of Governor General Award-winning playwright Ian Ross. Her previous work includes the play *Maybe This Afternoon*, which was featured in the 2022 Pimootayowin staged readings. Beyond her creative practice, she has served as the Executive Director of the Kinosao Sipi Minisowin Agency, demonstrating a career-long commitment to supporting First Nation families and reclaiming the traditional practices that foster community healing and long-term resilience.



### Jimmy Blais

Director / Dramaturg

**ROYAL MTC** First engagement.

**OTHER THEATRE** (selected) Directing: *Snow White*, *Celestial Bodies*, *Beyond Belief*, *Jordan*, *The Wolves* - META for Outstanding Direction, *Megalodon*, *Perfect Storm*, *POOF*, *Selfie* (Geordie Theatre). Assistant Directing: *Every Brilliant Thing* (Segal/Hudson Village). Acting: *The Assembly* (Porte Parole/Crow's); *Louis Riel* (Rustwerk); *Art*, *Feather*

*Gardens* (Hudson Village); *Halloween Tree* (Geordie Theatre); *The Flood* (Imago); *Theatre for One* (Centaur); *The Breathing Hole*, *Treasure Island*, *Romeo and Juliet* (Stratford). Playwriting: *The Velveteen Rabbit* (Geordie 2Play Tour); *Feather Gardens* - META winner for Outstanding New Text (Hudson Village); *Wardo* (Repercussion/Native Earth); *Sonny's Way* (developed at NTS and Native Earth's Weesageechak Begins to Dance).

**TV** Acting: Watio in *Mohawk Girls* (APT).

**ET CETERA** Jimmy's biggest role is Dad to daughter Indigo and partner to Tania who continue to support his life as a professional make-believer. Kinanaskomitin.



### Adam Parboosingh

Set Designer

**ROYAL MTC** *Murder for Two*, among men (with TPM), *Yaga*, *Bang Bang* (with Belfry), *Buying the Farm* (tour).

**OTHER THEATRE** Scenery Design: *The Undeniable Accusations of Red Cadmium Light* (PTE); *Frozen*, *Ma-Buhay! A New Musical* (Rainbow); *Gas Light* (Magnus); *Pals*, or *Scenes from a Friendship* (WJT); *Twelfth Night*, *Shakespeare's Will* (SIR); *The Prom* (Dry Cold). Lighting Design: *Ponderosa Pine* (PTE); *Narrow Bridge* (WJT); *Antigone* (Sick + Twisted); *Salt Baby*, *Lunenburg* (Magnus). Scenery and Lighting Design: *A Gentlemen's Guide to Love and Murder* (Dry Cold).

**TEACHING** Associate Professor of Theatre Design in the Theatre and Film department at the University of Winnipeg.

**ET CETERA** Adam's ongoing support comes from his wife Tamara and three kids (Mackenzie, Keaton and Harrison) and dog Coco. He is a member of the Associated Designers of Canada.



**Life's a journey.  
Save for it.**

[SCU.MB.CA/SAVEFORIT](https://scu.mb.ca/saveforit)



**Bringing together the power of  
our people and philanthropy  
to help foster change, nurture  
progress, and support local  
communities.**

**Proud to support The Royal Manitoba  
Theatre Centre and the Pimootayowin  
Creators Circle.**

Through the TD Ready Commitment, we're supporting organizations focused on increasing access to art and cultural events and activities and that work to create opportunities for people to participate in shared experiences that reflect the diversity of their community.

Learn more at [td.com/artsandculture](https://td.com/artsandculture)

**TD READY  
COMMITMENT**

© The TD logo and other TD trademarks are the property of The Toronto-Dominion Bank or its subsidiaries.





## IN THE SHADOW BEYOND THE PINES



**Amy McPherson**  
*Costume Designer*

**ROYAL MTC ELEVATE:** *Manajji'idiwin, The Comeback, The Secret to Good Tea.*

**OTHER THEATRE** *Blue Beads and Blueberries, Frozen River (MTYP); Tuesdays with Morrie, A Pickle, Pals (WJT); Owl Calling (Root Sky Theatre).*

**FILM** *The Nest (National Film Board of Canada).*

**TRAINING** Fashion Design and Apparel Production (MC College); Indigenous Haute Couture Residency (Banff Centre for Arts).

**ET CETERA** Always a pleasure to work with Royal MTC! Miigwetch/thank you.



**Kahentanó:ron  
Brianna Montour**  
*Lighting Designer*

**ROYAL MTC** First engagement.

**OTHER THEATRE** *Stone and Bone Spectacular (Centaur); Cottagers and Indians (Thousand Islands Playhouse); Salvage the Wrecked, Verdigris (NTS); A Midsummer Night's Dream (John Abbott College Theatre). Assistant Technical Director: Pawâkan Macbeth (Akpik). Lighting Design Associate: Jordan (Geordie). Assistant Set Design: Feather Gardens (Hudson Village).*

**TRAINING** Graduate of the National Theatre School of Canada, John Abbott College and artistic associate at Geordie Theatre.

**ET CETERA** Bri is a Kanien'kehá:ka theatre artist from Kahnawà:ke who aims to bring more opportunities to her community. Niá:wen Jimmy for having me on the team and for the inspiring way you work. I am grateful.

ROYAL  
**MTC**  
MANITOBA THEATRE CENTRE

## THEATRE FOR FANS UNDER 30

Looking for a great night out that's easy on your wallet? Theatre Under 30 members, aged 18 - 29, have exclusive access to world-class theatre for just \$25 a seat! **NEW** - members can purchase up to two tickets and bring a guest of any age!

**SIGN UP TODAY AT [ROYALMTC.CA/UNDER30](http://ROYALMTC.CA/UNDER30)**

JILL AGOPSOWICZ AND DANIEL BRIERE IN AGATHA CHRISTIE'S MURDER ON THE ORIENT EXPRESS. PHOTO BY DYLAN HEWLETT



A STAR ALLIANCE MEMBER  
MEMBRE DU RÉSEAU STAR ALLIANCE



## Elevating arts and culture

Air Canada is a proud airline partner of the Royal Manitoba Theatre Centre. We soar together when we support arts and cultural institutions in the communities we serve.

**#FlyTheFlag @aircanada**

## Élevons les arts et la culture

À titre de transporteur aérien, Air Canada est fière partenaire du Royal Manitoba Theatre Centre. En soutenant les institutions culturelles et artistiques dans les collectivités que nous desservons, nous les aidons à aller toujours plus haut, avec nous.

**#HautLeDrapeau @aircanada**



**AIR CANADA**

## IN THE SHADOW BEYOND THE PINES



**Jason Burnstick**  
*Sound Designer & Composer*

**ROYAL MTC ELEVATE:** *Manajji'idiwin, The Secret to Good Tea.*

**ET CETERA** 2021 Juno Nominee, 2020 Leo Award Winner for Composer of the Year for Best TV Movie and 1/2 of the multi-award-winning and nominated group Burnstick. Jason's many accolades also include 2015 Indigenous Music Award winner, 2010 APCA's Winner, 2009 Jessie Richardson and Dora Nominee, 2007 Juno Nominee and 2006 CAMA Award Winner. A Cree Musician, Singer-Songwriter/Composer based out of Winnipeg, Manitoba. Jason's musical expression has found its voice in his collection of original vintage 1920s Weissenborn lap slide guitars.



**Jhaik Windy Hair**  
*Knowledge Keeper*

Jhaik Windy Hair is from Cowessess First Nation in Southern Saskatchewan. Jhaik has two daughters and one son, three granddaughters, four grandsons and one great-grandson. Jhaik loves his family as well as his culture. He enjoys adventures with family. Also enjoys learning languages of other First Nations and is fluent in Plains Cree and Saulteaux. He attended University of Regina in the late 1990s earning a degree in Bachelor of Arts in Linguistics. His love for languages and teaching, sharing life lessons, and stories continues each day. He has participated as a storyteller for *RIIS From Amnesia*, a feature documentary, on the Regina Indian

Industrial School, and for *The Beacon Project: Stories of Qu'Appelle*, a documentary to screen on CBC. He was also a language consultant for the National Film Board short documentary *Stories are in our Bones*.



**Erin McGregor**  
*Cultural Support*

Erin McGregor is a Euro-Settler/Red River Métis writer currently living in Winnipeg, Manitoba. She is also a seasoned professional in the field of Indigenous rights and reconciliation, having worked with and for Métis and First Nations communities in various capacities for over 25 years. Erin obtained a Master of Fine Arts in Creative Writing from the University of British Columbia in 2022. Her first collection of poetry, *What Fills Your House Like Smoke* (ThistleDown Press, 2024) was longlisted for the Gerald Lampert Award, shortlisted for an Indigenous Voices Award, and was a finalist for a High Plains International Book Award.



### Enrich Your Experience!

Do you want to delve deeper into the themes of the play? For every show we release an enrichment guide with help from experts and educators. This guide offers background context, resources to explore and discussion questions to keep the conversation going. Read them at [royalmtc.ca/enrichmentguides](http://royalmtc.ca/enrichmentguides).

## IN THE SHADOW BEYOND THE PINES



**Key Caguioa**  
*Apprentice Director*

**ROYAL MTC** Apprentice Director: *King James*. Apprentice Stage Manager: *The Mountaintop*.

**OTHER THEATRE** Stage Management: *Macbeth* (Black Hole Theatre Co.); *Ma-Buhay! The Road to Rainbow Stage* (Winnipeg Fringe); *Ma-Buhay! A New Musical* (Rainbow); *Art Holm Series 9* (Art Holm); *Rizal* workshop (NAC Creators' Intensive). Directing: *The Theory of Everything* (Black Hole Theatre Co.); *The Gallery Wall* (Winnipeg Fringe).

**TV** *Maria and the Mennos* (YesTV).

**ET CETERA** Key is also the Communications and Patron Experience Manager at Theatre Projects Manitoba. Also, special thanks to Robbie Player!



**Samantha Desiree**  
*Stage Manager*

**ROYAL MTC** ASM: *Elf - The Musical*, *Casey and Diana* (with TA), *Clue* (with Grand). Apprentice SM: *Yaga*, *Into the Woods*, *Network*, *The Rez Sisters*, *Orlando*.

**OTHER THEATRE** SM: *Merrily We Roll Along* (Dry Cold); *Hansel & Gretel*, *Castor et Pollux*, *Mansplaining Division* (MUO); *Looking Glass*, *Season Launch 22/23* (WCD). ASM: *Bring It On: The Musical* (The Globe); *Narnia* (Bad Hats/MTYP). Apprentice SM: *The Wizard of Oz* (Rainbow). Apprentice Lighting Designer: *Narrow Bridge* (WJT). Production & Tour Coordinator: *Seven Visions* digital school tour (Sarasvati). Associate Producer/Sound Design: *Othello*

(Echo). SM/Production Assistant: *FemFest 2019 & 2020* (Sarasvati). Seasonally, the Performer Services Manager for the Winnipeg Fringe Theatre Festival.

**TRAINING** U of W Bachelor of Arts Honours - Stage Management, Production and Design. Creative Manitoba Mentorship in Stage Management 2020/21. Mentorship funded by Associated Designers of Canada in Lighting Design 2022/23.

**ET CETERA** As always, couldn't do it without my partner, Matt, and cat, Zella.



**Carolin Schroeder**  
*Apprentice Stage Manager*

**ROYAL MTC** Apprentice Stage Manager: *Elf - The Musical*, *Little Women*.

**OTHER THEATRE** Stage Management: *Daredevils*, *Bloodsuckers! The Musical* (Winnipeg Fringe); Kiyanaan Indigenous Theatre Festival (Echo Theatre); *Oh, the Humanity and Other Good Intentions* (U of W); *On the Edge*, *Concert Hour* Ballet, *Dance Spectrum* (RWB School). Apprentice Stage Management: *Merrily We Roll Along* (Dry Cold); *Romeo & Juliet* (RWB); *The Little Mermaid* (Rainbow).

**TRAINING** University of Winnipeg Theatre & Film Department.

**ET CETERA** Recipient of the Jean Murray - Moray Sinclair Scholarship. A huge thank you to everyone at Royal MTC. Thank you to my family, friends and mentors for your love, support and guidance. ●



## EXPLORE MORE

## In the Shadow Beyond the Pines

## EXPLORE MORE LOCAL GHOST STORIES

***Haunted Manitoba: Ghost Stories from the Prairies* by Matthew Komus.** Beneath its unassuming surface, Manitoba is rich with spooky tales of the supernatural, and this collection proves it with stories drawn from every corner of the province. 133.1097127 KOMUS 2019

***Campfire Stories from Coast to Coast* by Barbara Smith.** Over 40 stories filled with sinister spirits, urban myths, haunted houses, ghostly shipwrecks and other unexplained phenomena. Fact and legend come together with scary results, including one ancient spirit that haunts a Cape Breton lake and a Manitoba hitchhiker who meets a UFO. 398.209712 SMITH 2020

***Campfire stories of Western Canada* by Barbara Smith.** Over 30 creepy stories await, combining truth and local legends from across Western Canada. 398.209712 SMI 2016

## EXPLORE MORE INDIGENOUS HORROR ANTHOLOGIES

***Zegaaajimo: An Indigenous Horror Anthology.*** This collection of horror stories brings together 11 indigenous authors including David A. Robertson and Waubgeshig Rice to tell chilling tales of the supernatural and the monstrous. FICTION ZEGAAJIMO

***Midnight Storm Moonless Sky: Indigenous Horror Stories* by Alex Soop.** Alex leads us through hauntings on the Highway of Tears, to gatherings of ghosts, to experiences of racism. Experience the social anxiety of Indigenous life woven into speculative fiction. FICTION SOOP

***Never Whistle at Night: An Indigenous Dark Fiction Anthology.*** Named after a belief found across Indigenous cultures that whistling at night can cause evil spirits to appear. This collection of stories invites you to confront ghosts, curses, hauntings and acts of revenge. FICTION NEVER

## EXPLORE MORE HORROR NOVELS

***The Only Good Indians* by Stephen Graham Jones.** Four members of the Blackfeet Nation who, after wronging a spirit during an elk hunt, find themselves being followed by an entity bent on revenge. A novel exploring tradition, guilt, cultural identity and vengeance through folklore and modern life. Bram Stoker Award Winner. FICTION JONES

***Empire of Wild* by Cherie Dimaline.** Searching for her missing husband, Joan, a Métis woman, finds him after 11 months acting as a preacher in a tent revival meeting in a Walmart parking with no memory of their life together. The legend of the Rougarou, a werewolf-like creature, looms over the story, as Joan begins to suspect her husband is under its control. FICTION DIMALINE ●

---

*There are 1.4 million books, movies, audiobooks, eBooks, and more at the Winnipeg Public Library, and all you need to borrow them is your library card. There are 20 locations throughout the city, and there's an online catalogue for requesting items for pick-up at your library of convenience. An online e-Library has thousands of eBooks, eAudiobooks and more! All free to use with your library card. Visit us online at [winnipeg.ca/library](http://winnipeg.ca/library).*

The background is a solid black field. It is decorated with several thin, gold-colored lines that intersect to form a complex geometric pattern of triangles and polygons. In the upper left and upper right corners, there are two gold-colored cylinders, each oriented diagonally. Lines extend from the top edges of these cylinders across the frame, intersecting with other lines to create a sense of depth and perspective.

**We're proud to  
support Royal MTC's  
deep commitment to  
bringing Manitobans  
exhilarating theatre.**

**FillmoreRiley**

FillmoreRiley.com

**Fillmore Riley LLP**

Lawyers and Trademark Agents

Available in the  
**THEATRE**  
and  
served at  
Torque taproom,  
restaurants  
and Liquor Marts.

**TORQUE** BREWING

CRAFTING TRUST IN EVERY BREW.



*Jones & Company*  
— WINE MERCHANTS —



Shop Local, Globally.

1616 St. Mary's Road Winnipeg, Manitoba  
204.948.WINE (9463) | Text a Somm: 204.400.0499  
[joneswines.com](http://joneswines.com) | [wine@joneswines.com](mailto:wine@joneswines.com)

## SUPPORTERS

Many thanks to our donors  
who made a gift between  
Nov 1, 2024 and Jan 22, 2026

### DIRECTOR'S CIRCLE

#### \$10,000+

Gail Asper, OC, OM, LLD\* &  
Michael Paterson  
Zita & Mark Bernstein Family  
Foundation  
Linda McGarva-Cohen & James  
Cohen, OM  
The Mayor's Gala - Support for  
the Arts  
Shirley Anne Richardson Annual  
Giving Trust Fund - The Winnipeg  
Foundation  
Todd & Kellie Tanchak  
Dr. Marcel Van Woensel  
Anonymous

#### \$6,500-9,999

Houston Family of Bradwardine  
Fund - The Winnipeg Foundation  
June & Bob Jackson Memorial Fund  
for the Performing Arts - The  
Winnipeg Foundation  
Diane & Dave Johnston  
Ted & Ruth Northam  
Dr. H. Nyhof & Ms. Jo-Anne Lutz  
Polar Foundation  
Mr. Leslie Taylor

#### \$4,000-6,499

Pauline A. Braun  
David Christianson & Vera  
Steinberger  
Gail Corne  
Karen & Alan Dalkie  
Neil & Carol Duboff  
Susan Glass & Arni Thorsteinson  
Evan Klassen\* & Bert Keeper\*  
Liz Marr & Nick Slonosky  
Leigh Murphy - in memory of Liam  
Murphy\*  
Gerry & Barb Price  
Hartley & Heather Richardson  
James & Janice Tennant  
Dr. & Mrs. James & Kim Zacharias

#### \$2,000-3,999

Dr. J Baluta & Ms. O. Kandia  
Dr. Corinne Barrett DeWiele &  
Mr. V. Michael DeWiele  
Lorraine Beck Craig McIntosh  
Todd Bourcier  
H. F. Bowen  
Emily Burt\*

David & Lianne Carefoot  
David\* & Barb Christie  
Heather Clarke  
Gerry\* & Chris Couture  
D. J. Cowan  
Kerry Dangerfield\*\*  
Ben & Shari Diamond  
Dr. Lawrence & Ms. Brenda Ellerby  
Tony\* & Jennifer Fletcher\*  
Margaret Groome  
Linda Hamilton & Grange Morrow\*  
Sharon Hamilton\*  
Dr. P. Kmet & Mr. B. Roslycky  
Brent Kvern  
Donna & Dave\* Lalama  
Katrina Lee-Kwen & Jeff Neufeld  
Drs. Bill Pope & Elizabeth Tippet  
Pope Fund - The Winnipeg  
Foundation  
Sanford & Deborah Riley  
Bill & Laurie\* Speers  
Mait & Pat Sundmark  
Kelly Thornton\* & Joseph  
Seras-Gubert\*  
Helga Van Iderstine  
Grant & Trish Wainikka  
Anonymous

#### \$1,200-1,999

Doneta Broatchie, CM\* & Harry  
Broatchie\*  
Hadera & Mark Chisick  
The Circle Foundation  
Heather Collingridge  
Hugh Conacher\*  
Pam & Andrew Cooke  
Philip Corrin  
Corinne Ratuski & Brad Favel\*  
Kerry Feeny  
Sylvia Flam\*  
Katherine Fox\*\*  
Susan\* & Ab Freig\*  
Danny Gunn & Karen Blicher  
John\* & Nicola Guttormson\*  
Ahava Halpern & Frank Lavitt\*  
Barbara Hamilton  
Gregg & Mary Hanson  
Charles Henaire  
Vivian Hilder-Skwark & David Skwark  
- in memory of Mike Skwark\*  
Colleen Hrabii\* & Curtis Brown  
Shawn Hughes & Bruno Koehn\*  
Katie Inverarity  
Lisa Johnston  
Hon. William Johnston  
Michelle Kaschl  
Richard & Karin Klassen\*  
Serena Helen Kraayeveld  
David\* & Ellen Kroft\*  
J. Lamothe\*  
Rick Lee & Laurie Shapiro  
Peter & Karen Leipsic

Logan Family Fund - Nick Logan  
& Christine Skene  
Mark & Gloria Mancini\*  
Gerard Matte & Lydia Surasky-Matte  
Jim\* & Penny McLandress\*  
Melissa Novecosky  
Wayne & Linda Paquin  
Jean-Pierre Parenty & Michelle Smith  
Donna Plant  
Frances Pollard  
K. Heather Power & Harold Klause\*  
Jocelyne Prefontaine\*\*  
Lawrence Prout\* & Lisa Gardewine\*  
Margaret Redmond\* & Greg Gillis\*  
Nancy & Loren\* Remillard  
R. S. Cunha Dental Corp\*  
Sudhir Sandhu\* \*  
Ken & Susan\* Skinner\*  
Donald Smith\*  
Kevin Hines & Shelly Smith-Hines\*  
Joan Stephens - in memory of  
Annice Stephens\*  
Jodee Stewart  
Sasha & Josh Thiem\*  
Geeta\* & Michael Tucker\*  
Murray & Nancy Wiegand  
Rick & Claire\* Workman  
Dr. Dorothy Y. Young  
Nicole Zajac\*\*  
3 Anonymous

### COMPANY CIRCLE

#### \$600-1,199

Robert & Ina Abra Family Fund -  
The Winnipeg Foundation  
Jennifer & Scott Ash  
Ryan Bernier  
Birchwood Automotive Group  
Helga & Gerhard Bock  
Cathie & Brian Bowerman  
Kris Breckman  
Jennifer Blumenthal & Daniel Bubis  
Brenlee Carrington Trepel KC &  
Brent Trepel  
Gertie Chipka  
Aynsley & Grant Cockshott  
J. Davidson\*  
H. Dyck  
Neil & Sherry Fast  
Pamela & Kevin Friesen  
Adrian Frost & Kerra Mruks  
Felicia & Trevor Frost  
Brad & Jenn Gesell  
Jean\* CM & Dennis Giguere  
Kirby Gompf  
The Art Maister & Kayla Gordon  
Foundation  
Heather & Paul Grower

\*Current Royal MTC Board of Trustees/Advisory Board members

\*Current Royal MTC staff

\*Monthly Donors/Drama Club

## SUPPORTERS

Rodney Hick & Tracey Jackson  
 N & L Holliday  
 Ken Houssin\*  
 Sylvia Jansen  
 Tom & Laura Jellic  
 Kathy & Scott Jocelyn  
 Katherine Clements & James Tam  
 Peter Kingsley, KC\*  
 Bryan Klein & Susan Halprin<sup>§</sup>  
 Kevin & Deneen Klippenstein  
 Anne Krahn  
 Donna Korban & Family  
 Hester Kroft  
 Shirley Liba  
 Linda Loewen  
 Teresa Lopata & Bruce Wag  
 Brian & Christie Lysack\*  
 Garry Markham  
 Carol & Barry<sup>§</sup> McArton  
 Terri & Jim McKerchar\*  
 Ron McKinnon<sup>§</sup> & Peggy Barker\*  
 Carolyn Garlich & Peter Miller Gift  
 Fund  
 Colleen Munro  
 Marika Nerbas  
 Tracey Novak  
 Ivan & Cathy Oresnik\*  
 Cam & Carole Osler  
 Pierre Ouellet  
 Judith Parker\*  
 Kenneth & Helen Penner  
 Helene Poirier & Ian Gillies  
 Iris Reimer  
 Marlene Reiss  
 David & Joan Rew  
 Henriette Ricou & Jure Manfreda  
 Jean Riggall\*  
 Barbara Scheuneman  
 Tyler Shingoose  
 Shayna & Merrill Shulman  
 Marc & Debby Simard  
 Carol & Ron Slater Fund - Jewish  
 Foundation of Manitoba  
 Rick & Michelle Soenen  
 Deborah Spracklin  
 Doug Stephen  
 Shayne & Kathryn Taback  
 Leah R. Janzen & Ian R. Thomson  
 Dr. Peter Triggs\*  
 Vicki Verville\*  
 Carrie Wai  
 Jerry & Karen Wake  
 Faye Warren  
 Anonymous\*  
 6 Anonymous

### \$250-599

Pat & Darrell Adams\*  
 Dr. Elizabeth Adkins  
 Bob Adkins - in memory of Nancy  
 Glen Agar & Pam Reimer

Dawn Andersen  
 Jay & Judy Anderson  
 Abe Anhang  
 Craig & Sue Mackenzie  
 Elizabeth B. Armytage Fund  
 - The Winnipeg Foundation  
 Lynne Arnason  
 Dennis & Elaine Schultz  
 Peter Attwood  
 Brenna Bacchus\*  
 Peter Bagot  
 Zaz Bajon & Patricia Hunter  
 Olga & Ivan Banias  
 Earl & Cheryl Barish  
 Josie & Richard Bartlinski  
 Dianne J. Beaven  
 Larry Beeston & Anna Sikora  
 Holly Beirnes-Burt  
 George & Susan Benias  
 Terri & Morley Bernstein  
 Bruce & Joyce Berry  
 Suzanne Bishop  
 Marc Bissonnette  
 Brian & Joan Blakley  
 Bockstael Construction Ltd  
 Lilian Bonin & Daniel P Levin  
 Marilyn Bourbonnais  
 Ron Boyd\*  
 M. Braid  
 Billy Brodovsky & Libby Yager\*  
 Brian Brown  
 Ellen & George Bruce  
 Carol Budnick  
 Donna Byrne  
 Don & Rita Campbell  
 Colleen Cariou & Ron Maier  
 Arlene Carr  
 Cheryl Chaban  
 Rosemary Chapman  
 Shelley Chochinov  
 Roberta Christianson  
 Nancy Chuback  
 Ken Clark & Pamela Lockman  
 Agnes Collins  
 Neil & Wendy Cooke  
 Connor Coughlin  
 Jim & Gwen Court  
 Robert Coutts\*  
 Drs. Kristen Creek & Josh Manusow  
 Margaret Cuddy  
 Bradley J. Curran  
 Matthew Cutler & Dr. Avery Miller  
 J. Dale  
 Verna Danylchuk  
 Ms. D. Davidson  
 Doug De Graff  
 Andre & Diane de Rocquigny  
 Lorraine & Alan Dewar  
 Patrick Dewarle  
 Rita Dornn  
 Marilyn & Earl Dudek

Michael Duncan  
 Craig & Claudette Dunn  
 Helene Dyck  
 Glen\* & Joan Dyrda  
 Michael Easton  
 Gail Eckert  
 Greg Edmond & Irene  
 Groot-Koerkamp  
 John Edwards & Wendy Stelko  
 Ken & Lesley Enns  
 Ruth & Ernest Epp  
 Fran Falzarano  
 Kate Hodgert-Fennell\*  
 Pat & Doug Finkbeiner  
 Gayle Fischer  
 Maureen Flaherty & Fred Beckwith  
 Andrea Forbes-Avila\*  
 Joe Fregeau  
 Elroy Friesen  
 Paul Daeninck & Monica Furer  
 Colleen & Dan Furlan\*  
 Daniel Gagnon  
 Joel Gagnon  
 Helen Garrod  
 Lynne & Lindsay Gauld\*  
 Heather Gillander  
 Jan Gordon\*  
 Jeremy & Maureen Gordon  
 L D Graham  
 M. Gray  
 Harry & Cheryl Green  
 Sig & Leona Hackbart  
 Jackie Halliburton  
 Noella & Patrick\* Hanan\*  
 Doug & Sylvia Hannah  
 Brian & Dawn Hanson - in memory of  
 our Daughter, Kristin Dawn Hanson  
 Barbara Harrison  
 Kathryn & Wayne Harrison  
 Shaun & Gillian Hauser  
 Chris Hayduk  
 Trudy Heal  
 Frank & Sue Hechter\*  
 Ryan Henderson  
 Kyle Hendin & Breanne Korban  
 Marilyn Hendzel\*  
 Patricia & Robert Hill  
 Judith Hinton  
 Ted & Cathy Hlynsky  
 Rob & Jen Hochkiewicz\*  
 Kate Holden  
 Duraid Ibrahim  
 Dan & Karen Ilchyna  
 Karen Ilchyna  
 G. C. Irwin-Kilfoyle  
 C & C Isaak  
 Lynne Jentsch  
 Gerald Jewers  
 Dave & Lesia Johns  
 Tiffany Johnson-Sheldon  
 Marilyn & Sheldon Joyal

\*Current Royal MTC Board of Trustees/Advisory Board members \*Current Royal MTC staff \*Monthly Donors/Drama Club <sup>§</sup>Fondly Remembered





# **DISTINCTIONS**

**RARE AND EXCEPTIONAL**



## **YOU HAVE DISCERNING TASTE**

Distinctions offers access to a selection of the world's most exceptional spirits and wines. We invite you to explore our hand-picked collection and take home that rare find today.



**DISCOVER DISTINCTIONS**  
[LiquorMarts.ca/Distinctions](https://LiquorMarts.ca/Distinctions)

## SUPPORTERS

Kathy Kalinowsky  
Joanne & Rod Kamins  
L. Kampeas  
Kandla Family  
Sherry Kaniuga\*  
Sheryl Kapitz & Aaron London\*  
Joel & Danna Kaplan  
Sandy & Joan Kellett  
Joan Kennedy  
Robert Kennedy & Claudette Leclerc  
James & Nicole Kepp  
Kesslering Forsythe Family Fund  
Tara Campbell & Adam Klaponski  
Betty Ann Klassen  
Myron & Marion Klysh  
Julie Ann Kniskern  
Robyn Koropatnick  
David & Denise Koss  
Janice & Richard Kostelnyk  
Lesley Koven & Eric Thomas  
Carol Campbell & Andy Krentz  
Andre & Elsebeth Kriening  
Randie & Jan Kushnier  
Colin Kyle  
Laurie Lam & Larry Desrochers  
Desiree Lavallee\*\*  
John & Heather Lea  
Bob Leggett  
Richard Leipsic & Kerrie Halprin  
Curt Letkeman  
Tim Preston - in memory of Dave Ling  
Charles & Diane Littman  
Paul & Mary Loewen  
Robert & Diana Logan  
Laura Lomow  
Reginald & Judy Low  
Pat & Jim Ludwig  
Brent Schachter & Sora Ludwig  
Carole Lupkowski  
Tom Lussier  
MacDonald/Cageorge Fund  
- The Winnipeg Foundation  
Jim MacGregor & Christine Halma  
Roger Maguet  
Russ & Sherri Malkoske  
Judith Manning  
Mark & Mariza Mariano  
Cheryl & Eric Matheson  
Nancy & David MacAngus  
J. McCallum  
Jim & Lynne McClelland  
Campbell & Lorraine McIntyre  
Dr. Marlene & Ian McKay  
Colleen McKenty  
Greg & Gloria McLaren in memory  
of Dr. Peter Spencer  
Aveeve & Sam McLaughlin  
John & Carolynne McLure Fund  
- The Winnipeg Foundation  
Donald G. McNabb  
Barb Melnychuk

Loretta Merriam  
Albert & Judith Metcalfe\*  
Susie Mielash  
Irene Miller & the late Claire Miller  
Catherine Lambeth & Grant Mitchell  
Gord & Sherratt Moffatt  
Marc Monnin & Donna Miller  
Cecilia Mooney  
Tom & Susan Mooney  
Rodney Moorhead  
Sagan Morrow\*  
Cathy Moser & Jeff Itzkow  
Brad Nance\*  
Leslie Nichol  
Vanessa Dowostawski  
D. & G. Nytepchuk  
Sunny Oh  
Joanne Olchowecki  
John Osler  
Jeff Palamar  
Paulette Pappel  
Dr. Philip Pass  
William & Helen Patterson  
Myron Pawlowsky & Susan Boulter  
Peter & Anita Pelech  
Jo-Ann & Harvey Peltz\*  
Bonnie Penno\*  
Jan Perchal  
Linda Pettit  
Arth Pfeffer & Leona Wiens  
Rick Pinchin  
Kevin Piper  
Calvin & Jen Polet  
Beth & John Pollard  
Eunice & Doug Pratt  
Maureen Prendiville & Paul Jensen  
Nalini Reddy\*  
Pat & Bill Reid  
Cheryl Reid  
Joy Reimer  
Lorraine & Ernest Reinfort  
Shelley Rennie  
Jim & Leney Richardson  
Joan D. Richardson  
Marilyn Robbins  
Cindy Rodych  
Tamara Rossie  
Deborah & Neil Rostkowski  
Debbie Roy  
Michael T. Ruta  
Edith & Emile Samuels  
Paul & Cathy Samyn  
Onnolee Scharf\*  
Roland Schneider  
Harald & Vicki Schulz  
Faye Scott  
Gail Screation  
Claire Semchuk  
Sharon Shaydak  
Blake Shiaro  
Dr. Elinor Simons

Linda Simpson  
Mark C., Sabrina & Siena Smith  
Al\* & Virginia Snyder  
Geri Spencer  
Maria Steeds  
Heather Stefanson  
Anthony Steffes & David Viggers  
Dennis Stewner  
Heidi Struck\*\*  
Eleanor Suderman  
Mary Ann Supleve  
Andrew Swan & Tamsin Collings  
Ray & Fenella Temmerman  
Paulette Theberge  
Malcolm & Shirley Tinsley  
Doug & Heather Tisdale  
Doug & Deanna Tkach  
Jen & Kevin Tomanek  
Elaine Toms  
Gord & Lorena Trann  
Brad Baydock & Wendy Tretiak  
Dr. Stephen Tritt & Dr. Sharon  
Goszer Tritt  
Grant Tweed  
Dr. Kristel van Ineveld  
Vita Health Fresh Market  
Stirling Walkes  
Deanna Waters  
Leslie\* & Sean Watson\*  
John Webster  
Alys-Lynne & Steve West\*  
Norma Westcott  
Lionel & Lorraine Wiens  
Kathleen Gough & Tim Wildman  
Catherine Wilkie  
Keith & Kristen Wilson  
Reed & Arla Winstone  
Anita & Kevin Wolfe  
Deborah A. Wolfe  
Margaret & Paul Wright  
Richard L. Yaffe & John A. Statham\*  
Ryan Zajac  
Olivia & Roman Zubach  
2 Anonymous\*  
21 Anonymous

### \$150-249

Reeva Abrams  
Robert & Pat Adamson  
Sharon Allentuck  
Bonnie & Joel Antel  
Nadine Audet\*  
Marilyn Baker  
Richard & Nancy Ball  
Karen & John Bate  
Brenda Batzel  
Sandra Bazin  
Kevin Becker  
Jim & Doreen Beckstead  
Byrnes Benoit  
Trish Bergal

\*Current Royal MTC Board of Trustees/Advisory Board members \*Current Royal MTC staff \*Monthly Donors/Drama Club \*Fondly Remembered



Empowering  
creative  
young minds

Proudly supporting  
Royal Manitoba Theatre Centre

Canada Life and design are trademarks  
of The Canada Life Assurance Company.

canada  <sup>TM</sup>

## SUPPORTERS

Bruce & Shelley Bertrand-Meadows  
 Kristine Betker & Eric Kananoja  
 Don & Diane Bewell  
 Barbara Bielak  
 Val & Blair Bingeman  
 Michael Blais  
 Joan Blight  
 Marnie Bolland  
 Mavis Bollman & Ray Hesslein  
 Colleen & Stephen Bonner  
 Bruce & Karen Boyd  
 Patricia Bozyk  
 Don & Cheryl Breakey  
 Janine Brémault Bamford  
 France Adams & Stephen Brodovsky  
 Katelynd Brosowsky & Paul Gagné  
 Mrs. Donna J. Brown  
 Sean & Melanie Bueckert  
 John Burrows  
 Cheryl Butler  
 Diane & Gus\* Campbell  
 Corinne & Jamie Campbell  
 Debbie Campbell  
 Dr. Lloyd & Marian Campbell  
 Susan Chadwick  
 Lawrie & Bea Cherniack  
 Dr. T. I. Choptiany  
 Katherine Cobor  
 Robert & Carol Ann Coish  
 Diane Connelly  
 Joan E. Coombe  
 Joy Cooper & Martin Reed  
 Susan Copeland  
 Sarah Corley  
 Laurel Cumming  
 Ashleigh Czyrnyj  
 Werner & Judy Danchura  
 Linda Daniels  
 Chris Darazi\*  
 Alison Darling  
 Tessa Denton  
 K Dermody & B Kallert  
 Julie Diakiw  
 Vance & Sallee Dick  
 Leanne Docking  
 Bev & Allan Doern\*  
 Heather Domke  
 Sheila Domke & Stephen Ross

Tom Dooley  
 Rob Dryden  
 John & Ada Ducas  
 Harry & Mary Lynn Duckworth  
 Roberta Dyck  
 Barbara & David Ediger\*  
 Carly & Nevin Edmundson  
 John & Marilyn Ekins  
 Jemara Fay\*  
 Marion Fellingner  
 Patricia Fitzpatrick  
 Nancy Flintoft & John McWilliams  
 Janice & Russ Foster\*  
 Lawrence Foster\*  
 Jeff Fowler  
 Donna Frame\*  
 Christine M Freeman  
 Anne Friesen  
 Ron Gaffray  
 Gloria & Rick Gallant  
 Michelle Georgi  
 Juanita Giesbrecht  
 Patti & Rick Gilhuly  
 Ian & Lorraine Glassford  
 Benjamin Goldenberg  
 John & Marcia Gordon  
 Sylvia Graham  
 Russ Greene & Sandra  
 Paterson-Greene  
 Robert Gregoire\*  
 Abigail Grieder  
 Janet Hall  
 Paul & Val Harack  
 Shellie & Grant Hatch\*  
 Teresa A. Hay  
 Ingrid Hayes  
 Joe Healey  
 Judy Heppelle  
 Mary & David Hickling  
 Lenore & John Hodge  
 Mary Hodge  
 Jennie Hogan  
 Lisa Hunt & Hugh Wichenko\*  
 Jean Hyrich  
 Stu & Alice Iverson  
 Maureen Jack  
 Wendy & Jim Jackson  
 Heather D. Janik

Elizabeth Janzen  
 Morgan & Frank Johnson  
 Verna Johnson  
 Robert & Karen Johnston  
 Brian & Renee Kaplan  
 Brent Karr - in memory of Marla  
 Olafson-Karr  
 Ursula & John Kelemen  
 Shan Dickson & Andrea Kneale  
 Ms. Julie Koehn  
 Donna & Jim Komishon  
 Jacki & Sheldon Koven  
 Lorraine Kraichy\*  
 Terri Krasnowski\*  
 Paula Kristjanson Hasiuk  
 Howard & Jane Kroeger  
 Robert Lafond  
 Teena Laird  
 Cheryl Langer  
 Bryen Lebar & Patricia Sauder\*  
 Saul & Kathy Leibl  
 Tim & Kate Letkemann\*  
 Becky Lett\*  
 Stan & Susan Lipnowski  
 Dr. Karen Lischka  
 Judy & Eric Lister  
 John & Joy Loewen\*  
 Carol Ann Lussier  
 Lyndsay Managire  
 Dr. Neil & Elaine Margolis  
 Ilse Marotta  
 Lynne Martin\* - in memory of  
 Omar Martin  
 Agatha Massey  
 Linda Matheson  
 Barbara McCandless  
 Judy McCleary  
 Linda A McMillan  
 Michael & Debra McMullen  
 Barry McNabb  
 Catarina Mello Schultz\*  
 Gail Mildren  
 Celoris Miller  
 Cressida Mills  
 Jan Montgomery  
 Marlene Mortimer  
 Suzanne & Kenneth Munroe  
 B. Nagamori

For just \$10/month your membership gets you access to the backstage drama at MTC. Includes monthly stories, tours of the building, special events with seasoned professionals, plus a full tax receipt and all the benefits of being a Star Patron.



ALREADY A DONOR AND INTERESTED  
 IN SWITCHING TO MONTHLY GIFTS?  
 CALL BRENDAN AT 204 954 6412.

**ROYALMTC.CA/DRAMACLUB**  
 FOR MORE INFORMATION

PHOTO BY LEIF NORMAN



## SUPPORTERS

Harold & Nancy Nagy  
Robert Nickel  
Duane Nicol  
Helen Norrie  
Tom Nowicki  
Patrick & Sherry O'Connor  
Marilyn Onisko  
Irene Onuch  
Rita & Mark O'Rourke  
Cynthia Orris  
Iris Overby  
Theresa Oye  
Kristen Pachet  
Sonja Pasiechnik  
Chris Pearce & Ruth Magnuson  
Brian Perchaluk  
Ingrid Peters Fransen  
Donald & Elaine Peters  
Kristin Peterson  
Funseekers Travel  
Cynthia Plett  
Denise Plett  
Carla Plummer  
M. Lois Powne  
Lorraine Prokopchuk  
Tammy Rabkin  
Vivian E. Rachlis  
Roberta & Rick Rackal  
Dr. R. & Audrey Ramchandarr  
Jim & Kathy Ranick\*  
Linda Ratynski  
Candace & Adam Rea\*  
Lucas Redekop  
Margaret Redekop  
Ted & Marilyn Redekop  
Mark & Gwen Relph  
The Robbins Family  
Nicole Robidoux  
Linda Robinson  
Deborah Rodewald  
Kevin Rollason & Gail MacAulay  
Harold & Vera Romanychyn  
Mary Anne Rosenbloom  
Pat & Michelle Rowan  
Cecile Roy  
Maria & Kyle Sabourin  
David & Tammie Sainsbury  
K & D Saloranta  
Heather Sandilands\*  
Dan & Sandra Sawatzky  
Trudy Schroeder  
Diane Schurek  
Carol Scurfield  
Shimon Segal  
Irka Semaniuk  
Greg Sexsmith & Joni Lavender  
Sexsmith\*  
Jo-Anne & Ian Seymour  
Kumar Sharma & Angelina DiSanto  
Jim & Susan Shaw  
Sydney Shore & Wayne Sharpe

Debbie Shymko  
Meera & Sach Sinha  
Ms. Judy Nichol & Dr. Jim Skinner  
Earl Slimmon  
David Smith  
Margo & Dennis Smith  
Muriel Smith  
Jon Sorokowski  
Caterina & George Sotiriadis  
Jacqueline St. Hill  
Karen Stach  
Sharon Stanley  
Kim Stephens  
Wally Stewart & Lori Tighe  
Shirley & Tom Strutt  
Charlotte Summerly  
Alec Surasky  
Anita Tait  
Heather & Donald Talocka  
Mala & Andrew Teeluck\*  
Patricia Ternovetsky  
Jeff Thiessen  
Linda Thomas  
Lesley Thomson  
Elaine Tresoor  
Eric Turner\*  
Chris Turyk & Bryce Weedmark\*  
James Tutte  
Robert Tyler  
Teresa Visser  
Gwen & Helmut Waedt  
Naomi Wall  
Jane & Don Walters\*  
Paul & Laura Walton\*  
Robert & Sherilyn Ward  
John & Marjorie Warkentin  
Peter & Joan Washchysyn  
Hymie & Shaaron Weinstein  
Ryan Weiss  
Mary Agnes Welch\*  
Lydia & Michael West  
Al & Pat Wherrett\*  
Florence & Donald Whitmore  
Terence Wiebe  
Les & Terry Wiens  
Theresa Wiktorski  
Leslie Wilson  
Gustine & Dennis Wilton  
Michael & Lorilee Woelcke  
James Wood\*  
Gloria Zacharias  
Kerry Zakowich  
2 Anonymous\*  
24 Anonymous

## SPONSORS

Air Canada  
The Asper Family Foundation  
The Gail Asper Family Foundation  
The Asper Foundation  
Bell MTS  
Birchwood Lexus  
Bonaventure Travel Inc.  
Canada Life  
CIBC Imperial Markets  
Dycom Direct Mail Services  
Esdale Printing Co. Ltd.  
Exchange District BIZ  
Fillmore Riley LLP  
Free Press  
GFL Environmental  
Global Drain Technologies  
IG Private Wealth Management  
Jewish Foundation of Manitoba  
Jones & Co Wine Merchants  
Lawton Partners  
Lawyers Financial  
Soirée Event Planning  
Manitoba Bar Association  
Liquor Mart  
McDiarmid Flowers  
McNally Robinson Booksellers  
The North West Company  
POS Systems  
PRA Inc.  
Red River Co-operative Ltd.  
Relish Ideas  
Richardson Foundation  
Stantec Consulting Ltd.  
Steinbach Credit Union  
Tanchak Wealth Management Group  
Taylor McCaffrey LLP  
TD Bank Group  
Torque Brewing  
University of Manitoba  
Westgate Enterprises  
WOW! Catering

\*Current Royal MTC Board of Trustees/Advisory Board members

\*Current Royal MTC staff

\*Monthly Donors/Drama Club



## SUPPORTERS

### CORPORATE DIRECTOR'S CIRCLE

**\$25,000+**

Johnston Group Inc.  
Richardson Foundation

**\$5,000-9,999**

Cambrian Credit Union  
City of Winnipeg  
Maxim Truck & Trailer - Doug  
Harvey & Jan Shute  
Robinson

**\$3,000-4,999**

Maple Leaf Construction Ltd., Blake  
Fitzpatrick

**\$1,200-2,999**

Arthur J. Gallagher Insurance and  
Risk Management  
Domo Gasoline Corporation Ltd.  
- Kate M. Everett, President  
Manitoba's Credit Unions  
Qualico  
Terracon Development Ltd.

### CORPORATE COMPANY CIRCLE

**\$600-1,199**

Mid West Packaging Limited  
Premier Printing Ltd.

**\$300-599**

Border Brokers Inc.

**\$150-299**

Patill/St. James Insurance

### TRIBUTE GIFTS

In memory of Ian Ross  
Rayna Anderson

In memory of Lacona Cunningham  
Ted Cunningham

In memory of Elizabeth Hargot  
Edwina Hargot

In memory of Hester Lee Kroft (née  
Israels)

### FOUNDERS' CIRCLE

Wayne & Lee Anderson  
Gail Asper, OC, OM, LLD\*  
Zdzislaw (Zaz) Bajon & Patricia  
Hunter  
June Bari  
Peggy Barker & Ron McKinnon\*  
Mariam Bernstein  
Marjorie & Morley\* Blankstein  
Duane\* & Pauline Braun  
Katelynd Brosowsky & Paul Gagné  
Doneta Brothie, CM\* &  
Harry Brothie  
Ken\* & Denise Brown  
David & Lianne Carefoot  
Len & Heather Cariou  
Terri Cherniack & Steven Schipper,  
CM, OM  
Jennifer Cheslock & George Buri  
David Christianson & Vera  
Steinberger  
David\* & Barbara Christie  
Gerry\* & Chris Couture  
D. J. Cowan  
Hugh B. Cowan  
Kerry Dangerfield\*  
Laurie Lam & Larry Desrochers  
Glen\* & Joan Dyrda  
Robert & Florence Eastwood  
Don & Elsie Elias  
Bill\* & Gayle Fischer  
Anthony\* & Jennifer Fletcher  
Jack Fraser  
James Gibbs\*  
Sandy & Rheel Gousseau  
Rita Gunn\* & Gregory Mason  
John\* & Nicola Guttormson  
Ahava Halpern & Frank Lavitt  
Linda Hamilton & Grange Morrow  
Sharon Hamilton  
Gary Hannaford\* & Cathy Rushton  
Ted\* & Gail Hechter  
Elaine Heinicke\*  
Camilla Holland  
Shawn Hughes & Bruno Koehn  
June\* & Bob Jackson Fund for the  
Performing Arts  
Maureen E. Jay  
Andrew & Wendy Jensen  
David & Diane Johnston  
Dr. Leonard & Hope\* Kahane  
Janis Kaminsky  
Jason Kasper  
John Kearsey  
Gordon & Anne Keatch\*  
Rob Kennedy & Claudette Leclerc  
Serena Helen Kraayeveld  
Leona J. MacDonald

Cheryl Johansson\* & Michael  
Mainman  
Mark & Gloria Mancini  
Virginia Martin\*  
Jim\* & Penny McLandress  
Barb Melnychuk  
Bob & Pat Migliore  
Jeffrey Morton\*  
Ken & Sharon Mould  
Dr. Liam Murphy\*  
Robb & Heather Paterson  
Chris Pearce  
Scott Penner  
Gina & John C. Petersmeyer  
Drs. Bill Pope & Elizabeth  
Tippett-Pope  
K. Heather Power & Harold Klause  
Margaret Redmond\* & Greg Gillis  
Marlene Reiss & Perry Rose  
Edward Fisher & Lyse Rémillard  
Joan D. Richardson  
Jean Riggall  
Michelle Rowan  
Michael T. Ruta  
Sharon Ryman  
Susan Skinner\*  
Kevin Hines & Shelly Smith-Hines  
Bill & Laurie\* Speers  
Deborah Spracklin  
Joan Stephens  
Joanne Tait  
Suzanne Ullyot  
Lionel & Lorraine Wiens  
Margaret\* & Alfred Wikjord  
Richard L. Yaffe & John A. Statham\*  
Brenda Zaporzan\*  
3 Anonymous

### ENDOWMENT - STEVEN SCHIPPER FUND

Many thanks to the generosity of our Endowment Fund donors who gave a gift or fulfilled a pledge payment between Nov 1, 2024 and Jan 22, 2026. Amounts listed are cumulative.

**\$5,000,000+**

Government of Canada/  
Gouvernement du Canada  
Canadian Heritage/Patrimoine  
canadien

\*Current Royal MTC Board of Trustees/Advisory Board members \*Current Royal MTC staff \*Monthly Donors/Drama Club \*Fondly Remembered  
If you have remembered Royal MTC in your will, please let us know.

## SUPPORTERS

### \$100,000-249,999

Manitoba Theatre Centre Volunteer  
Corps of Ushers  
The Leigh & Liam Murphy Family  
Fund  
Henriette Ricou & Jure Manfreda  
Anonymous

### \$50,000-99,999

Drs. Ken & Sharon Mould

### \$25,000-49,999

Marilyn & Jim Burt  
Susan Glass & Arni Thorsteinson  
Terracon Development Ltd.

### \$10,000-24,999

Don & Sheila Katz  
Susan & Keith Knox  
Garry Markham  
Cheryl Ogaranko & Alexis Ogaranko  
Norma Anne Padilla

### \$5,000-9,999

Margaret Caie  
Ron & Carol Chapman  
Pam & Andrew Cooke  
Gina O'Connor & John C.  
Petersmeyer\*

Marlene Reiss & Perry Rose  
Barbara Scheuneman  
Elaine Toms  
Anonymous

### \$2,500-4,999

Don & Cheryl Breakey  
Carol Budnick  
Rita & Don Campbell  
Art & Donna Chow  
Robert Dyck  
Michael & Lynn Evans  
David & Ewhenia Gnutel  
John & Margaret Graham  
Barbara Main  
Paul & Elaine Neelon  
Jean & Lisa Neron

### \$1,000-2,499

Miranda & Hannah Baran  
Ron Boyd  
Dorothy Davidson  
Jordan Janisse & Teresa Cooper  
Estelle Meyers  
Sandra Sadler  
Jim & Susan Shaw  
Howie & Sue Simpson  
Geri & Peter<sup>s</sup> Spencer  
Deborah Spracklin  
2 Anonymous

### \$500-999

Allan & Evelyn Hardy  
Mr. & Mrs. Fred Kisil  
Mama & Papa Migliore  
Marlene Mortimer  
Ivor & Lorna Schledewitz  
Bryce & Jenna Simes  
Gabor Vamos & Brenda Silver

### UP TO \$499

Adam & Tara Klaponski  
Evan Klassen<sup>+</sup> & Bert Keeper<sup>+</sup>  
Elliot Leven  
Mary-Anne Lovallo  
Jacqueline L. Melnyk  
Theresa Oye  
Edward Fisher & Lyse Rémillard  
Debbie Wilson  
Anonymous

**MANY THANKS TO  
OUR VOLUNTEERS!**



## Let us celebrate you.

Join the Founders' Circle today and your planned gift will ensure that Royal MTC will be a home for artists and arts lovers for generations.

We look forward to recognizing and celebrating your generosity, foresight, and commitment to Royal MTC's future starting today.

**IF YOU HAVE ANY QUESTIONS, WE WOULD LOVE TO HEAR FROM YOU!**

Contact Brendan at 204 954 6412 or [bmckeen@royalmtc.ca](mailto:bmckeen@royalmtc.ca)



ROYAL  
**MTC**  
MANITOBA THEATRE CENTRE



## SUPPORTING PARTNERS

### CORE FUNDERS



Prairies Economic  
Development Canada

Développement économique  
Canada pour les Prairies

Canada

Manitoba



Canada Council  
for the Arts

Conseil des arts  
du Canada



CONSEIL DES  
ARTS DU  
MANITOBA  
ARTS COUNCIL



WINNIPEG  
ARTS COUNCIL

THE  
WINNIPEG  
FOUNDATION  
For Good. Forever.

### EXCLUSIVE PRODUCTION SUPPORTER



RICHARDSON  
FOUNDATION

### JOHN HIRSCH MAINSTAGE PRODUCTION SPONSORS

THE  
ASPER  
FOUNDATION

GAIL ASPER  
FAMILY FOUNDATION

### TOM HENDRY WAREHOUSE PRODUCTION SPONSOR

THE  
ASPER  
FOUNDATION

## SUPPORTING PARTNERS

### LOYAL PARTNERS



### REGIONAL TOUR



### BLACK & WHITE BALL



### WINNIPEG FRINGE THEATRE FESTIVAL



# BEHIND THE SCENES

## BOARD OF TRUSTEES

### HONORARY MEMBERS

Her Honour, Lt. Governor Anita R. Neville  
The Honourable Wab Kinew, Premier of Manitoba  
His Worship, Mayor Scott Gillingham

### EXECUTIVE OFFICERS

David Kroft, Chair  
John Guttormson, Past Co-Chair  
Laurie Speers, Past Co-Chair, Winnipeg Fringe Theatre Festival  
Advisory Committee, Chair  
Emily Burt, Treasurer & Organizational Performance Committee Chair  
Jocelyne Prefontaine, Secretary  
Claire Workman, Resource Development Committee Chair  
Susan Freig, Governance & Strategic Planning Committee Chair  
Nalini Reddy, Inclusion, Diversity, Equity & Access Committee Chair  
Loren Remillard, Nominating Committee Chair

### TRUSTEES

Blair Doell	Katrina Lee-Kwen
Brad Favel	Linda McGarva-Cohen
Kerry Feeoney	Patrick McLenehan
Jessica Floresco	Sudhir Sandhu
James Kepp	Nicole Zajac

### ADVISORY COUNCIL

John Guttormson, Chair	Colin R. MacArthur, KC
Gail Asper	Patrick J. Matthews
Doneta Brothchie, CM	Jim McLandress
Angus Campbell	Jeffrey Morton, FCA
David Christie	Hon. Jack Murta
Gerry Couture	Lillian Neaman
Kerry Dangerfield	Lawrence Prout
Hy Dashevsky	Jeff Quinton
Glen Dyrda, FCA	Patricia Rabson
Anthony C. Fletcher	Margaret Redmond
Jean Giguere	Susan Skinner
Charron Hamilton	Al Snyder
Gary Hannaford, FCA	Maureen Watchorn
Ken Houssin	

## STAFF

### ACCOUNTING/FINANCE

Carlos Betonio, Payroll Coordinator  
Misty Bromley, CPA, CGA, Director of Finance  
Christina Smith, Accountant

### ADMINISTRATION

Kurt Brown, HR Generalist  
Randy Desrochers, Capital Projects Manager  
Evan Klassen, Executive Director  
Kathrin Moncaster, IT Manager

### ARTISTIC

Herbie Barnes, Interim Program Director,  
Pimootayowin Creators Circle  
Melissa Langdon, Artistic Programs Coordinator  
Isabelle Ly, Producer  
Ian Ross, Program Director, Pimootayowin Creators Circle<sup>§</sup>  
Kelly Thornton, Artistic Director  
Leslie Watson, Company Manager

### BOX OFFICE

Box Office Team Leads: Jane Hunter, Shayla Meeroff  
Box Office Representatives: Sharon Bunn, Ehrian Federis,  
Artie Lorraine, Avery Mittermayr, Carolin Schroeder,  
Dyonssalynn Stoll, Tatiana Tuazon, Katie Welham

### CARPENTRY (JOHN HIRSCH MAINSTAGE)

Christian Hadley, Layout Carpenter  
Brent Letain, Master Carpenter  
Chris Seida, Scenic Carpenter

### DEVELOPMENT

Alix Edwards, Development Coordinator  
Trish Cooper, Corporate Partnerships Manager  
Meaghan Fletcher, Special Events Coordinator  
Brendan McKeen, Individual Giving Manager  
Heidi Struck, Director of Development

### COMMUNITY ENGAGEMENT & AUDIENCE DEVELOPMENT

Colleen Hrabí, Director of Community Engagement & Audience Development  
Esteban Seunarine, Volunteer Manager  
Cole Reuther, Front of House Manager  
Assistant Front of House Managers: Vanessa Gates,  
Alyna Sikorsky, Amelia Tremblay, Aysia Watts  
Front of House Staff: Dane Bjornson, Renelle Chartier, Meagan  
Chrest, Chael Donald, Miles Ehlers, Hannah Gilmore, Cassidy  
Groening, Joanna Houston, Willow Isaac, Danielle Ladouceur,  
Christine Leslie, Kimmy Martin, Keely Mcpeek, Lauren Minaker,  
Christina Reid, Eve Ross Moore, Journey Skjaerlund, Cobi  
Winston

### MAINTENANCE

Mason Campbell, Building Custodian  
Chris Fletcher, Building Manager

### MARKETING & COMMUNICATIONS

Ksenia Broda-Milian, Education & Enrichment Manager  
Sue Caughlin, Marketing & Communications Manager  
Micaella Langit, Database Support Technician  
Desiree La Vallee, Ticketing Application Specialist  
Savannah Lillies, Marketing & Communications Coordinator  
Christina Reuther, Sales Coordinator  
Jocelyn Unrau, Director of Marketing & Communications

### PAINT

Carla Schroeder, Head Scenic Artist  
Larissa Shabaga, Interim Assistant Head Scenic Artist

### PRODUCTION

Eiden French, Assistant Technical Director  
Ian Kirk, Production Driver  
Allison Loat, Director of Production  
Donnie Osler, Technical Director  
Denise Piche, Assistant Production Manager  
Alex Sinclair, Associate Technical Director

### PROPERTIES

Khaeler Bautista, Props Builder  
Zoë Leclerc-Kennedy, Assistant Head of Props  
Jamie Plummer, Head of Props

### STAGE CREW

Kayla McSwain, Head of Wardrobe (Stage)  
Claude Robert, Head Electrician  
Jessica Rose, Head of Audio  
Liam Shattuck, Head Stage Hand  
Chris Thomson, Head Carpenter

### TOM HENDRY WAREHOUSE

Meagan Chrest, Scenic Carpenter  
Tim Clark, Head of Sound  
Evan King, Head Electrician  
Ryan Spracklin, Master Carpenter

### WARDROBE

Thora Lamont, Lead Cutter  
Martha Boyce, Wardrobe First Hand  
Heather Thorleifson, Associate Head of Wardrobe  
Jackie Van Winkle, Head of Wardrobe/Buyer

### WIGS

Beverley Covert, Head of Wigs/Make-Up  
Nico Pielou, Interim Head of Wigs/Make-up

### WINNIPEG FRINGE THEATRE FESTIVAL

Chuck McEwen, Executive Producer  
Tori Popp, Festival Manager

### HONORARY STAFF

Zaz Bajon, General Manager Emeritus  
Steven Schipper, CM, OM, Artistic Director Emeritus

<sup>§</sup>Fondly Remembered



## BEHIND THE SCENES

### ADDITIONAL PRODUCTION STAFF

#### ROGERS V. ROGERS

Charlotte Baker, Video Operator  
Additional staff provided by IATSE Local 63

#### IN THE SHADOW BEYOND THE PINES

Linda Beech, Props Builder  
Kate Berg, Scenic Artist  
Ellen Hatley, Scenic Artist  
Additional staff provided by IATSE Local 63

### ROGERS V. ROGERS

#### CROW'S THEATRE ADMINISTRATION AND PRODUCTION STAFF

Chris Abraham, Artistic Director  
Sherrie Johnson, Executive Director  
Christopher Manousos, Associate Artistic Director  
Katie Pounder, General Manager  
Heather Landon, Senior Producer  
Beth Wong, Producer  
L.J. Savage, Director of Production & Facilities  
Zach Fedora, Director of Production  
Ryan Borshuk, Technical Director  
Jay Hines, Assistant Technical Director  
Sydney Erin Kowal, Video Makeup  
Gerald Altenburg, Wig Design  
Jacqueline Robertson Cull, Wigs  
Lisa Nighswander, Head of Props  
Kim Schaedlich, House Technician  
Zach White, House Technician  
Ian Noble, Crew Lead  
Phillip Trajceviski, Crew Lead  
Ryan Davy, Crew Lead

## — STAY CONNECTED —

### FOLLOW US FOR BEHIND-THE-SCENES CONTENT



Cast of *Murder on the Orient Express* in rehearsals



Life of Pi puppet creation



Elf - The Musical sleigh creation



RoyalMTC.ca



Cast of *Elf - The Musical*. PHOTO BY DYLAN HEWLETT

## A Little Sparkle, A Lot of Heart!

You came together in a very big way to support the magic of live theatre and we're incredibly grateful. Thanks to you, our *Elf*-inspired holiday fundraising campaign was a wonderful success. Thank you for rising to the challenge and giving generously.

Just like Buddy from *Elf*, you believe that spreading cheer can light up the darkest, coldest winter nights. You have proven once again that joy, connection and a little theatrical sparkle is valued by you and our community.

Your fellow passionate theatre lovers, **Linda McGarva-Cohen and James Cohen**, helped amplify that magic by generously offering to match **\$25,000 in new, increased and additional gifts**. And you made the match happen. That kind of collective generosity reminds us that when we believe in something together, *anything* is possible.

Every gift, whether big, small, first-time or because "I couldn't resist giving again!" made a meaningful difference. What you see on stage this season exists because you're supporting it with your kindness. The laughter, the

reflection and the moments that make you feel like you're part of something bigger...that's donor-powered magic.

And the impact doesn't stop when the curtain falls. Your generosity ripples outward and builds belonging, ignites creativity and sparks joy throughout our community. Because of you, theatre will continue to thrive.

Whether you were a brand-new donor, an annual supporter, a monthly Drama Club member or someone who made a second (or third!) gift this year, please know how deeply thankful we are. The magic of theatre is possible because of donors just like you.

Missed making a year-end gift? It's not too late to support the current season. You'll be investing in exceptional theatre for all to enjoy and unlocking benefits that deepen your connection to the impact you create.

For more information, contact **Alix Edwards, Development Coordinator**, at 204 954 6411 or [aedwards@royalmtc.ca](mailto:aedwards@royalmtc.ca).

From all of us at Royal MTC: thanks for believing in the magic. ●

**SCAN HERE  
TO DONATE  
TODAY!**



NEXT AT THE JOHN HIRSCH MAINSTAGE



# the last wife

BY KATE HENNIG

★★★★★ "All hail *THE LAST WIFE*" - NOW MAGAZINE

MAR 25 — APR 18

RoyalMTC.ca 204 942 6537

A person with blonde hair, wearing a red blazer, is holding a glass of beer in the background. The scene is dimly lit, suggesting a restaurant or bar setting.

**THE  
KEG®**

# OUR MENU, YOUR MOMENTS

Enjoy great food and good times  
for every occasion.



Find your nearest Winnipeg location at [thekeg.com](https://thekeg.com)  
Garry St. | Southside | St. James