

OVATION

ROYAL
MTC
MANITOBA THEATRE CENTRE

VOL 32 • NO 1
OCT/NOV 2024



JOHN
HIRSCH
MAINSTAGE

THE PLAY THAT GOES **WRONG**

By Henry Lewis, Henry Shields & Jonathan Sayer

WORLD PREMIERE

THE — RECIPE —

By Armin Wiebe

TOM
HENDRY
WAREHOUSE

TOM HENDRY WAREHOUSE
SEASON SPONSOR

BMO 



CHASE PADGETT
PRESENTS

a 6 String CHRISTMAS



A FUN MUSICAL ROMP THROUGH CLASSIC CHRISTMAS TUNES!

December 4 - 7 at the Tom Hendry Warehouse

INFO & TICKETS AT WINNIPEGFRINGE.COM

MESSAGE FROM THE ARTISTIC DIRECTOR



Welcome to the 2024/25 Season at Royal MTC! We are thrilled to kick off our Mainstage season with the delightfully silly *The Play That Goes Wrong*, and Armin Wiebe's homegrown prairie gothic *The Recipe* at the Warehouse.

Programming a season is like serving up a delicious meal with many delectable courses. These two plays, certainly, are excellent openers to get the party started! *The Play That Goes Wrong* not only tickles our funny bone, it's also an endearing love letter to theatre – as a well-meaning troupe of amateur actors put new meaning into the old adage “the show must go on.” The comic prowess of this cast, and its creative team, never ceases to amaze me!

The Recipe, inspired by Wiebe's Gutenthal novels, brings its host of characters to the stage, transporting us to a small Mennonite community in 1960 rural Manitoba. It's the story of a group of wily and restless young adults, who are on the precipice of making major decisions that will define their lives. Wiebe's language, a creative blend of English and Flat German, is as poetic and evocative as the prairie landscape itself.

I'm thrilled to welcome you for another season of great theatre. Whether you have been coming to MTC for the last 20 years or you are new to our theatre, we are so pleased to have you join us as we share in the act of imagining.

Enjoy the show!

Royal Manitoba Theatre Centre is proud to call Manitoba home. Royal MTC is located in Winnipeg on Treaty 1, the traditional territory of the Anishinaabeg, Cree, Anishininew and Dakota people, and the National Homeland of the Red River Métis. We are thankful for the benefits sharing this land has afforded us, acknowledge the responsibilities of the Treaties, and embrace the opportunity to partner with Indigenous communities in the spirit of reconciliation and collaboration.

THEATRE ABBREVIATION LEGEND

A.C.T. American Conservatory Theater • San Francisco, CA	Rainbow Rainbow Stage • Winnipeg, MB
Arts Club Arts Club Theatre Company • Vancouver, BC	RNT Royal National Theatre • London, England
ATF Atlantic Theatre Festival • Wolfville, NS	Royal Alex The Royal Alexandra Theatre • Toronto, ON
ATP Alberta Theatre Projects • Calgary, AB	RSC Royal Shakespeare Company • Stratford-upon-Avon, England
BAM Brooklyn Academy of Music • NYC	RWB Royal Winnipeg Ballet • Winnipeg, MB
Bard on the Beach Bard on the Beach Shakespeare Festival • Vancouver, BC	Sarasvati Sarasvati Productions • Winnipeg, MB
Belfry The Belfry Theatre • Victoria, BC	Segal The Segal Centre for Performing Arts • Montreal, QC
Blyth Blyth Theatre Festival • Blyth, ON	Shaw Shaw Festival • Niagara-on-the-Lake, ON
Broadway Theatre district • New York, NY	SIR Shakespeare in the Ruins • Winnipeg, MB
CBC Canadian Broadcasting Corporation	Soulpepper Soulpepper Theatre Company • Toronto, ON
Centaur Centaur Theatre Company • Montreal, QC	Stratford Stratford Festival • Stratford, ON
Citadel The Citadel Theatre • Edmonton, AB	SummerWorks SummerWorks Theatre Festival • Toronto, ON
COC Canadian Opera Company • Toronto, ON	TA Theatre Aquarius • Hamilton, ON
CS Canadian Stage • Toronto, ON	Tarragon Tarragon Theatre • Toronto, ON
Dora Dora Mavor Moore Award • Toronto, ON	TBTR Theatre by the River • Winnipeg, MB
Drayton Drayton Entertainment • Ontario	TC Theatre Calgary • Calgary, AB
Dry Cold Dry Cold Productions • Winnipeg, MB	TiFT Talk is Free Theatre • Barrie, ON
Factory Factory Theatre • Toronto, ON	TNB Theatre New Brunswick • Fredericton, NB
GCTC The Great Canadian Theatre Company • Ottawa, ON	Toronto Free Toronto Free Theatre • Toronto, ON
Grand The Grand Theatre • London, ON	TPM Theatre Projects Manitoba • Winnipeg, MB
HGJT Harold Green Jewish Theatre Company • Toronto, ON	TSO Toronto Symphony Orchestra
Mirvish Mirvish Productions • Toronto, ON	U of M University of Manitoba
Moving Target Moving Target Theatre Company • Winnipeg, MB	U of T University of Toronto
MTYP Manitoba Theatre for Young People • Winnipeg, MB	U of W University of Winnipeg
NAC National Arts Centre • Ottawa, ON	ViC The Village Conservatory for Music Theatre • Winnipeg, MB
Necessary Angel Necessary Angel Theatre Company • Toronto, ON	VP Vancouver Playhouse Theatre Company • Vancouver, BC
Neptune Neptune Theatre • Halifax, NS	West End Theatre district • London, England
NFB National Film Board of Canada	WCT Western Canada Theatre • Kamloops, BC
NTS National Theatre School of Canada • Montreal, QC	WJT Winnipeg Jewish Theatre
Persephone Persephone Theatre • Saskatoon, SK	WSO Winnipeg Symphony Orchestra
PTAM Popular Theatre Alliance of Manitoba • Winnipeg, MB	WST Winnipeg Studio Theatre
PTE Prairie Theatre Exchange • Winnipeg, MB	YPT Young People's Theatre • Toronto, ON
	zone41 zone41 theatre • Winnipeg, MB

Ovation

VOLUME 32, NUMBER 1
OCTOBER/NOVEMBER 2024

Ovation is published six times per theatre season and has an approximate yearly circulation of 85,000.

PRINTING: Premier Printing Ltd.

ADVERTISING INQUIRIES

Savannah Lillies

TELEPHONE: 204 934 0309

EMAIL: slillies@royalmtc.ca

ROYAL MTC

MANITOBA THEATRE CENTRE

Royal Manitoba Theatre Centre
174 Market Avenue
Winnipeg, MB R3B 0P8
Canada

RoyalMTC.ca

BOX OFFICE: 204 942 6537

ADMINISTRATION: 204 956 1340

FAX: 204 947 3741

Royal MTC is a member of the Professional Association of Canadian Theatres and engages, under the terms of the Canadian Theatre Agreement, professional artists who are members of the Canadian Actors' Equity Association.

Scenery, Carpentry and Show Running Crew at the John Hirsch Mainstage and the Tom Hendry Warehouse are members of IATSE Local 63.

USHERS • Royal MTC's loyal volunteer ushers are available at every performance to assist patrons.

LATECOMERS • Latecomers will be seated at the discretion of the House Manager.

COURTESY TO OTHERS • Talking, candy wrappers and coughing are distracting to fellow patrons and actors. We ask each patron to please keep noise to a minimum during a performance. Thank you for your cooperation.

SCENTS AND ALLERGIES • A number of Royal MTC patrons have expressed concerns regarding medical reactions caused by scented products, so much so that they can't enjoy the show. Please consider others before using items such as colognes, perfumes and hairspray. Your thoughtfulness is appreciated.

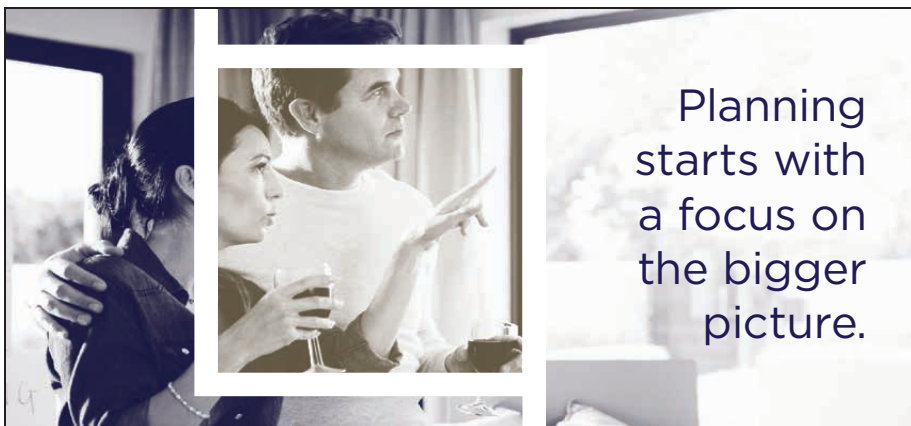
HEARING ENHANCEMENT • Sennheiser Infrared Listening Devices are available free of charge in the lobby at the John Hirsch Mainstage and Tom Hendry Warehouse, supplied by the Royal MTC Volunteer Corps of Ushers Capital Campaign donation. Please see the House Manager for details.

PROHIBITED • The use of cameras and recording devices is strictly prohibited. Mobile devices must be turned off. To be contacted in an emergency, leave your name and seat number with the House Manager.

WARNINGS • On occasion, Royal MTC's productions may contain script-specific smoking of non-tobacco products, special effects and language/content warnings. For more information on specific productions, please visit royalmtc.ca.

Taylor McCaffrey is Proud to Support the Royal MTC

TAYLOR
McCAFFREY
LAWYERS



Planning
starts with
a focus on
the bigger
picture.

At Lawton Partners, we guide our clients with insight and experience.
We believe it's important to be leaders in our community as well as in business.

You belong in the company of leaders.
lawtonpartners.ca



THE PLAY THAT GOES WRONG

Joel Schaefer, John Ulyatt, Honey Pham
and Daniela Vlaskalic. PHOTO BY NANC PRICE



Director's Notes BY DENNIS GARNHUM

It is an incredible honour to return to the Royal Manitoba Theatre Centre after directing last season's production of *Clue*. Winnipeg audiences are the best: you love to laugh, I discovered. Let's get into more delicious fun.

Ever had a day that just didn't go as planned? A Terrible, Horrible, No Good, Very Bad Day? Event after event comes crashing down where the thought popped out: "Really? Really. Come on!" Now imagine if that happened in the theatre, where a bunch of devoted folks worked their hearts out onstage and off, but no matter what everything fell apart - figuratively and literally. Welcome to *The Play That Goes Wrong*. Here is a key distinction: If these people let the problems stop the show and send us all home, we'd call that a tragedy. But despite the troubles, the show goes on - and they make it through. And because of that, we can celebrate this as a comedy. We're able to laugh with these theatre people (not at them) because the company perseveres.

The very first time I read this play I cheered on our heroes from start to finish. Why? Because I know these people. I love these people. They are my hard-working colleagues whom I have been around my entire life. Their passion is attractive, their devotion is awe-inspiring, and they are wonderful humans on top of it all. The play they are presenting, *The Murder at Haversham Manor*, will go down as a triumph. Why? Because they did it - they never gave up.

And let me make this very clear:

!Fall excellent an having are you hope I and Centre Theatre Manitoba Royal the at here us joined have you glad so am I ●



**THE
CITADEL
THEATRE**

BUY YOUR TICKETS TODAY! citadeltheatre.com

A brand new musical exploring the life and careers of country music legends Johnny Cash and June Carter Cash, told through the eyes of their son John Carter Cash. From their first meeting in 1956 at the Grand Ole Opry to fame, life on the road, controversy and family. This re-telling of their iconic love story is complete with hits like: *I Walk The Line*, *Ring of Fire*, and many more.



Photo: Jeff Yee

theatre:
CALGARY
Stafford Arima, Artistic Director
theatrecalgary.com

We are proud to partner with the Royal Manitoba Theatre Centre and the Citadel Theatre for *The Play That Goes Wrong*.

PRESENTS

IN PARTNERSHIP WITH THE CITADEL THEATRE AND THEATRE CALGARY

The Play That Goes Wrong

By Henry Lewis, Henry Shields & Jonathan Sayer

October 17 – November 9, 2024

PREVIEW October 16

Director Dennis Garnhum
Set & Props Designer Beyata Hackborn**
Costume Designer Joseph Abetria†
Lighting Designer Kimberly Purtell**
Associate Lighting Designer Christian Horoszczak
Sound Designer Dave Pierce
Sound Associate / Composer Donovan Seidle
Fight & Movement Director Morgan Yamada
Assistant Director Daniel Fong
Stage Manager Michael Duggan††
Assistant Stage Manager Lore Green
Apprentice Stage Manager Sarah Lamoureux

This production is presented by arrangement with Dramatists Play Service under license from Mischief Worldwide Ltd.

The Mischief Production of *THE PLAY THAT GOES WRONG* was originally produced on the West End Stage by Kenny Wax & Stage Presence and on Broadway by Kevin McCollum, J.J. Abrams, Kenny Wax & Stage Presence.

THE PLAY THAT GOES WRONG was first presented by Mischief Theatre under the title *The Murder Before Christmas* on December 4, 2012, at the Old Red Lion Theatre in London.

THE PLAY THAT GOES WRONG by Henry Lewis, Jonathan Sayer & Henry Shields
© 2012, 2014 Mischief Worldwide Ltd. All rights reserved.

THE PLAY THAT GOES WRONG, the “Falling G” logo device, Mischief, and Mischief Theatre are trademarks of Mischief Worldwide Ltd. All rights reserved.

For Mischief Worldwide Ltd.:

Directors: Mark Bentley, Jonathan Burke, Henry Lewis, Kenny Wax

Executive Director: Jo Danvers

Marketing Manager: Harry Lockyear

Production & Administrative Assistant: Minoli De Silva

Exclusive Agent for Literary Rights: Nicki Stoddart, United Agents LLP, London

For information about all Mischief works, please visit www.mischiefcomedy.com

Production photography by Nanc Price.

**Indicated designers on this production are represented by the Associated Designers of Canada, IATSE Local ADC659

*Position funded through the Jean Murray - Moray Sinclair Theatre Apprenticeship Program

†Past Jean Murray - Moray Sinclair apprenticeship or scholarship recipient

††Past Naomi Levin Theatre Scholarship award winner

The Play That Goes Wrong

THE CAST (IN ALPHABETICAL ORDER)

<i>Jonathan (plays Charles)</i>	Alexander Ariate
<i>Sandra (plays Florence)</i>	Vanessa Leticia Jetté
<i>Max (plays Cecil & Arthur)</i>	Andrew MacDonald-Smith
<i>Stage Crew</i>	Emily Meadows†
<i>Stage Crew</i>	Bernardo Pacheco
<i>Annie (Stage Manager)</i>	Honey Pham†
<i>Robert (plays Thomas)</i>	Joel Schaefer
<i>Trevor (Lights & Sound Operator)</i>	Ray Strachan†
<i>Dennis (plays Perkins)</i>	John Ulyatt
<i>Krista (Director)</i>	Daniela Vlaskalic

UNDERSTUDIES

Understudies never substitute for listed performers unless a specific announcement is made at the time of their appearance.

<i>Robert</i>	Alexander Ariate
<i>Krista, Sandra, Annie</i>	Emily Meadows†
<i>Max, Trevor, Jonathan</i>	Bernardo Pacheco
<i>Dennis</i>	Ray Strachan†

SETTING: Takes place on the opening night of the Cornley Drama Society's production of *The Murder at Haversham Manor* by Susie H. K. Brideswell. Present day.

The Murder at Haversham Manor takes place in Charles' private rooms at Haversham Manor on the evening of Charles and Florence's engagement party. Winter 1922.

The Play That Goes Wrong is performed with one intermission.

UNDERSTUDIES FUNDED BY



SYNOPSIS - Welcome to the opening night of the Cornley Drama Society's newest production, *The Murder at Haversham Manor*. Krista, Cornley's Artistic Director, is sure this 1920s murder mystery whodunnit will be the success they've all been striving for. But when things start to go...for lack of a better word...wrong, this band of accident-prone thespians put new meaning into the term 'the show must go on.' Amid missing props, faulty sets, and a specific crew member's newfound love for the stage, things continue to escalate, and the team must battle against all odds to make it to the final curtain call. It's total mayhem and guaranteed laughter! ●

THE PLAY THAT GOES WRONG



Alexander Ariate

Jonathan (plays Charles)

Understudy: Robert

ROYAL MTC First appearance.

OTHER THEATRE *The Three Musketeers*, *The Importance of Being Earnest*, *CLUE*, *Peter Pan Goes Wrong* (Citadel/Arts Club); *The Merchant of Venice*, *The Tempest*, *Othello*, *Twelfth Night*, *Winter's Tale* (The Shakespeare Company); *Might As Well Be Dead*, *Murder on the Orient Express*, *HEIST* (Vertigo Theatre); *Listen Listen* (Teatro La Quindicina).

TV *Fortunate Son* (CBC Gem).

TRAINING 2018 Graduate of the University of Alberta's BFA Acting Program, Mount Royal University Diploma in Theatre Performance.

ET CETERA Alex is thrilled to be making his Winnipeg debut with such an amazingly talented team. He hopes you enjoy the show!



Vanessa Leticia Jetté

Sandra (plays Florence)

ROYAL MTC First appearance.

OTHER THEATRE *A Christmas Carol* (2019-2023), *The Mousetrap*, *Little Women*, *Hamlet* (TC); *The Extractionist*, *CLUE*, *Sherlock Holmes and The Vanishing Thimble* (Vertigo Theatre); *Premium Content* (Major Matt Mason Collective); *The Strid* (Downstage Theatre); *Hamlet Frequency* (The Shakespeare Company/One Yellow Rabbit: Beautiful Young Artist).

ET CETERA Vanessa is so excited for everyone to see this crazy silly show. She

would love to thank her family and her partner Chris for their love and support as she navigates windows...



Andrew MacDonald-Smith

Max (plays Cecil & Arthur)

ROYAL MTC *The Sound of Music* (with Citadel), *Road Dahl's Matilda the Musical* (with Arts Club/Citadel), *Shakespeare in Love* (with Citadel).

OTHER THEATRE *Peter Pan Goes Wrong*, *Jersey Boys*, *Crazy for You*, *Avenue Q*, *Mary Poppins*, *One Man, Two Guvnors*, *The Pillowman* (Citadel); *Cocktails at Pam's*, *Pith!*, *Witness to a Conga* (Teatro Live!); *The Mikado*, *The Pirates of Penzance* (Edmonton Opera); *Little Shop of Horrors*, *Shear Madness*, *The Wizard of Oz* (Mayfield); *Dirty Rotten Scoundrels*, *Crazy for You*, *Mary Poppins* (TC); *The Liars*, *The Best Brothers* (Shadow).

FILM/TV *Tiny Plastic Men*, *Inward Edward*, *The Man That Got Away*.

ET CETERA Andrew is the Artistic Director of the comedy-focused theatre company Teatro Live!, in Edmonton, where he lives with his outrageously talented wife Louise, whom he met in Winnipeg. @drewmacsmith



This is where imagination
meets inspiration.

Proudly supporting and celebrating arts, culture and creativity in our community.



JAMES RICHARDSON & SONS, LIMITED

ESTABLISHED 1857
AND AFFILIATED COMPANIES

THE PLAY THAT GOES WRONG



Emily Meadows

Stage Crew

Understudy: Krista,
Sandra, Annie

ROYAL MTC *Into the Woods*, Miss Bennet: Christmas at Pemberley. 2022/23
Pimootayowin Creators Circle, 2021/22
National Mentorship Program.

OTHER THEATRE *Frozen River* (MTYP); *Li Keur: Riel's Heart of the North* (Manitoba Opera); *Gentleman's Guide* (Dry Cold); *Reefer Madness* (WST); *Stronger Together* (Suitcase Theatre); *The Dream Catchers* (Charlottetown Festival YoCo/Eastern Canada touring company); *We All Got Lost* (Hamilton Fringe); *The Last 48* (Winnipeg Fringe); *Jo's Coat* (Rainbow).

FILM/TV *Kara Robinson Story*, Aberdeen, Safehaven.

TRAINING Honours Bachelor of Music Theatre Performance from Sheridan; the Second City Conservatory Programme for Improv and Sketch Comedy, Toronto.

ET CETERA Grateful five-time Royal MTC Jean Murray-Moray Sinclair Scholarship winner; recipient of the Elizabeth Mawson-Maud Whitmore scholarship for voice. Thank you to Royal MTC, my supportive family and friends, especially mom and dad.

ENRICH YOUR EXPERIENCE!

Do you want to delve deeper into the themes of the play? For every show we release an enrichment guide with help from experts and educators. This guide offers background context, resources to explore and discussion questions to keep the conversation going. Read them at royalmtc.ca/enrichmentguides.



Bernardo Pacheco

Stage Crew

Understudy: Max, Trevor,
Jonathan

ROYAL MTC *Network* (with Citadel).

OTHER THEATRE *The Humans* (San Diego Repertory); *Little Women* (TC); *With Bells On* (Lunchbox Theatre).

TRAINING Art of Acting Studio's Professional Conservatory, Graduate of University of Calgary's BFA.



Honey Pham

Annie (Stage Manager)

ROYAL MTC 2023/24 National Mentorship Program, 2023/24 Assistant Education Coordinator.

OTHER THEATRE *we could be clouds* (fu-GEN); *Carried By The River* (Red Snow Collective); *A Perfect Bowl of Pho* (Kick & Push Festival); *Narnia* (Theatre Sheridan/Bad Hats); *Nobody Asked To Be Here* (Musical Stage Co./Theatre Sheridan & Potassium Theatre); *School of Rock* (WST).

TV *Zaasakwe*, *Fourth Period Burnout* (CBC); *Colour of Scar Tissue* (APTN).

TRAINING Honours Bachelor of Music Theatre Performance at Sheridan College.

ET CETERA Recipient of the Acting Award, Student Leadership Award and Creative Dance Project Award (Sheridan College); and the Jean Murray - Moray Sinclair Scholarship. Shoutout to the after school leaders program for providing accessible arts education for low income students. Thank you to my dearest friends, jj, mom, sister and ba noi.



Real food from the land...

At Peasant Cookery we have a passion for transforming fresh ingredients into original and trend-forward cuisines. Our rustic, seasonally inspired menu, famous housemade charcuterie, combined with exceptional service and inviting bistro atmosphere are an experience not to be missed.



100-283 Bannatyne
204.989.7700



RESTAURANT AND WINE BAR

A Japanese - style Steakhouse with a perfectly paired wine list. Located in a modern space on the corner of Portage and Main.

204.938.8696 | 529uptownwpg.com

Hours: Monday – Friday, 11:30 a.m. – 8 p.m.

Complimentary Parking after 5 p.m.



THE PLAY THAT GOES WRONG



Joel Schaefer

Robert (plays Thomas)

ROYAL MTC First appearance.

OTHER THEATRE *Escape to Margaritaville*, *The Louder We Get*, *Billy Elliot The Musical* (TC); *Tick, Tick... Boom!*, *Naughty... But Nice* (Forte); *Something Rotten* (Shakespeare Company); *Morricone + Bernstein, Ragtime* (Calgary Philharmonic); *Beauty and the Beast* (YPT); *Slipper* (ATP).

FILM/TV *Baroness Von Sketch Show*, *1Up*.

TRAINING/TEACHING Graduate of the Royal Conservatoire of Scotland. Joel teaches voice out of his private studio in Calgary.

ET CETERA Joel Schaefer is a Betty Mitchell Award-nominated performer, music director and educator. So many thanks for love and support always to Mom, Dad, Julia, Kristi, Jamie, Garrett and Paige! @joelrschaefer



Ray Strachan

Trevor (Lights & Sound Operator)

Understudy: Dennis

ROYAL MTC *The Mountaintop*, *Into the Woods*, *The Three Musketeers*, *Calpurnia* (with NAC/Black Theatre Workshop), *It's a Wonderful Life: The Radio Play*, *Shakespeare in Love* (with Citadel), *The Man Who Shot Liberty Valance*, *Romeo and Juliet*, *One Flew Over the Cuckoo's Nest* (with TC).

OTHER THEATRE Director: *The Velveteen Rabbit* (MTYP); *Hedda Gabler* (Echo Theatre). Actor: *Feast* (PTE); *The Prom* (Dry Cold); *The Tempest* (Citadel); *Deserter*, *Remember the Night* (Moving Target); *The Whipping Man* (WJT).

FILM/TV *The Porter* (CBC Gem/BET); *Violent Night*, *Vandits*.

ET CETERA I'm honoured to be representing the folks creating theatre magic behind the scenes. Special Shoutout to Matthew Lagace and Gary Plouffe.



John Ulyatt

Dennis (plays Perkins)

ROYAL MTC *Roald Dahl's Matilda The Musical* (with Arts Club/Citadel), *Shakespeare in Love* (with Citadel), *The Curious Incident of the Dog in the Night-Time* (with Citadel).

OTHER THEATRE *A Christmas Carol*, *Crazy for You*, *Cabaret*, *Private Lives*, *The Pillowman*, *I Am My Own Wife*, *Billy Bishop Goes to War*, *Death of a Salesman*, *Long Day's Journey Into Night*, *Spamalot* (Citadel); *The Best Brothers*, *Puttin' on the Ritz* (Belfry); *Funny Girl* (Segal); *A Little Night Music* (VP); *The 39 Steps*, *The Mystery of Irma Vep* (Vertigo); and eight seasons with Freewill Shakespeare.

ET CETERA John is a co-founder of Firefly Theatre and Circus in Edmonton, and is a notable street artist whose works include *The Human Fountain* and the 21st Century Gargoyles.

HERMANOS

RESTAURANT & WINE BAR

JOIN US FOR DINNER
BEFORE THE SHOW!

MTC SEASON TICKET HOLDERS RECEIVE 15% OFF

179 BANNATYNE AVE | WINNIPEG, MANITOBA R3B 0R5

For reservations book at Hermanos.ca or call 204-219-0779

THE PLAY THAT GOES WRONG



Daniela Vlskalic

Krista (Director)

ROYAL MTC Playwright/Actor: *The Drowning Girls*.

OTHER THEATRE By *The Light of a Story* (Theatre Orangeville); *Hamlet* (Rose Theatre/Shakespeare Company/Hit & Myth); *The Orange Dot* (Theatrefront); *Sherlock Holmes: The Final Adventure* (TA); *Disgraced* (Magnus Theatre); *God of Carnage*, *Cripple of Inishmaan* (TC); *Cockroach*, *Drama: Pilot Episode* (ATP); *Doubt* (CS); *All's Well That Ends Well*, *Hamlet*, *The Taming of the Shrew* (Stratford); *Vimy*, *Equus*, *Einstein's Gift*, *Arms and the Man* (Citadel); *Goodnight Desdemona (Good Morning Juliet)* (Belfry); *Strawberries in January*, *The Red Priest* (Globe Theatre). Playwriting credits include *Sleight of Mind*, *The Castaways* and *The Fox*. Plays co-written with Beth Graham include: *Dora Maar: the wicked one*, *Comrades*, *Mules* and the multiple-award-winning play, *The Drowning Girls*.

Henry Lewis, Henry Shields & Jonathan Sayer

Playwrights

Henry, Henry and Jonathan met while training at The London Academy of Music and Dramatic Art (LAMDA). All core members of Mischief Theatre, they had already worked in comedy together for several years before they started out as a writing team. The three's first piece was *The Play That Goes Wrong* (winner - Best New Comedy - Olivier Awards and What's On Stage Awards). The show started out on the London and Edinburgh Fringe before touring the UK and internationally and then returned to the West End in September

2014, where it is still running. It also played on Broadway and headed out on a US tour in 2018 and has been performed in over 20 other countries around the world. *Peter Pan Goes Wrong* was their second piece, opening in November 2014 for a UK tour before a hugely successful West End season in Christmas 2015. They also adapted the script of *Peter Pan Goes Wrong* for the BBC, which was filmed with the original West End cast and broadcast in 2016. They were invited back to wreak more havoc at the BBC in 2017 with *Christmas Carol Goes Wrong* on BBC1. *The Comedy About a Bank Robbery* marks their third writing project as a trio and earned them another Olivier nomination. @mischiefcomedy and mischieftheatre.co.uk



Dennis Garnhum

Director

ROYAL MTC *Clue* (with Grand), *Three Tall Women*, *Of Mice and Men* (with Citadel), *Closer*, *To Kill A Mockingbird* (with Citadel), *Vinci* (with NAC).

OTHER THEATRE Highlights: *Barber of Seville* (Florida Grand Opera/Vancouver Opera); *Cabaret*, *Prom Queen* (Grand); *Timothy Findley's The Wars*, *Lost - A Memoir* (TC); *Twelfth Night* (Bard on the Beach); *S.S. Tenacity* (Shaw); *Trials of Ezra Pound* (Stratford).

TRAINING Masters Degree - Direction - University of British Columbia.

ET CETERA Recipient of the Queen Elizabeth Diamond Jubilee Medal. Dennis was the Artistic Director of the Grand Theatre for seven seasons and at Theatre Calgary for 11 seasons. Dennis recently wrote *TOWARD BEAUTY: Reigniting a creative life on the Camino de Santiago*, which follows his 830 km walk across Spain (amazon.ca).

THE PLAY THAT GOES WRONG



Beyata Hackborn
Set & Props Designer

ROYAL MTC First engagement.

OTHER THEATRE *The Secret Garden*, *Village Wooing*, *The Playboy of the Western World*, *Overruled*, *Bright Lights* (Shaw); *The Inheritance* (CS); *Chris, Mrs.* (Boldly Productions); *Little Shop of Horrors* (Arts Club/Citadel); *Jersey Boys* (Citadel); *Metronome*, *Mob* (Workshop West); *Sleight of Mind* (WCT).

ET CETERA Beyata enjoys assisting other designers across Canada – building maquettes, drafting, illustrating. She has an especial love for shows that embrace non-reality and the absurd, musically-driven pieces, and has an incredibly soft spot for Sondheim. On a good day, she can juggle a bit.



**THEATRICAL
ARTS EDUCATION
ASSOCIATION**

BRINGING THE
NEXT
GENERATION OF
PERFORMERS
INTO THE
SPOTLIGHT WITH
FESTIVALS,
WORKSHOPS,
SCHOLARSHIPS
AND MORE!!



LEARN MORE ABOUT HOW
WE HELP STUDENTS PURSUE
THEIR PERFORMANCE
DREAMS



Cozy & Vibrant

Join us for a great
evening experience,
located in Winnipeg's
Exchange District.



Weekly Live Music



Kevin's
Bistro

141 Bannatyne Ave.
204.221.5028
kevinsbistro.ca

Call us or
book through
[opentable.com](https://www.opentable.com)

THE PLAY THAT GOES WRONG



Joseph Abetria
Costume Designer

ROYAL MTC Costume Designer: *The Comeback, The Piano Teacher, Calpurnia* (with NAC/Black Theatre Workshop); *Tiny Plays, Big Ideas; Bang Bang* (with Belfry); *Last Train to Nibroc*. Associate Costume Designer: *Into the Woods*. Apprentice Costume Designer: *Billy Elliot the Musical*. 2020/21 National Mentorship Program.

OTHER THEATRE (selected) Costume Designer: *Charlie and the Chocolate Factory, Grand Ghost (Grand); Snow White, Spelling 2-5-5 (MTYP); Volare, Space Girl, Voice (PTE); Plé (Plé Collective presented by MTYP); Women of the Fur Trade* (Vault Projects); *Mary's Wedding, Iceland* (TPM). Production Designer: *The Player King (SIR); The Game, Two Indians* (Sarasvati). Assistant Costume Designer: *Othello, The Neverending Story, The Rocky Horror Show, Romeo and Juliet* (Stratford).

TRAINING University of Winnipeg.



Kimberly Purtell
Lighting Designer

ROYAL MTC *Let's Run Away* (reWork Productions), *Alice Through the Looking-Glass, Jane Eyre, The Drowsy Chaperone* (with TC), *Cul-de-sac*.

OTHER THEATRE Kimberly has designed for Theatre Calgary, Citadel, Mirvish Productions, Stratford Festival, Shaw Festival, Soulpepper Theatre, National Arts Centre and the National Arts Centre Orchestra, Pacific Opera Victoria, Opera Philadelphia, Edmonton Opera, among many others.

ET CETERA She is the recipient of three Dora Mavor Moore Awards, the Pauline McGibbon Award, a Montreal English Theatre Award and an Elizabeth Sterling Award. Kimberly is the VP of the Associated Designers of Canada.



THEATRE FOR FANS UNDER 30

Looking for a great night out that's easy on your wallet? Theatre Under 30 members, aged 18 - 29, have exclusive access to world-class theatre for just \$20 a seat!

SIGN UP TODAY AT [ROYALMTC.CA/UNDER30](https://royalmtc.ca/under30)

FOR MORE INFORMATION, PLEASE CONTACT
KSENIA BRODA-MILIAN AT UNDER30@ROYALMTC.CA

THE CAST OF *CLUE* PHOTO BY DYLAN HEWLETT.





Congratulations Royal Manitoba Theatre
Centre on another season!



The CIBC logo is a trademark of CIBC.

THE PLAY THAT GOES WRONG



Christian Horoszczak
Associate Lighting Designer

ROYAL MTC First engagement.

OTHER THEATRE Christian Horoszczak is a Toronto-based Lighting Designer. Previous designs include: *Doubt: A Parable* (Thousand Islands Playhouse); *Bad Roads* (Crow's Theatre); *All The Sex I've Ever Had* - Tokyo, Kyoto, Seoul, Zurich and Sydney World Pride Editions; *Sex, Drugs and Criminality* - Riga Edition (Mammalian Diving Reflex); *Three Sisters, Entrances and Exits* (Howland Company). Assistant Lighting Designer: *Fall For Dance North* and the Stratford Festival.

ET CETERA He is the recipient of a Dora Mavor Moore Award in lighting design.



Dave Pierce
Sound Designer

ROYAL MTC *Little Shop of Horrors - The Musical* (1996 - with TC).

OTHER THEATRE *Come Fly With Me; Sinatra; Moving Out; Chicago; Annie Get Your Gun; 42nd Street; Dr. Dolittle; Thoroughly Modern Millie; Crazy For You; Forever Swing; Red Rock Diner; A Closer Walk with Patsy Cline*; 30+ years of Calgary Stampede Grandstand Shows.

FILM/TV Olympic Opening Ceremonies 2010-present; multiple Michael Bublé TV Specials; FIFA Stadium Openings; World Expo Dubai; Royal Visit of Queen Elizabeth; Andrew Lloyd Webber Concert Tour.

ET CETERA Emmy award for Outstanding Music Direction of 2010 Olympic Opening Ceremony; Arranger for 10+ Grammys; Supports inclusiveness in the creative world.



Donovan Seidle
Sound Associate / Composer

ROYAL MTC First engagement.

OTHER THEATRE Supporting work on: *Come Fly With Me; Sinatra; Moving Out; Chicago; Annie Get Your Gun; 42nd Street; Dr. Dolittle; Thoroughly Modern Millie; Crazy For You; Forever Swing; Red Rock Diner; A Closer Walk with Patsy Cline*; 30+ years of Calgary Stampede Grandstand Shows; GlobalFest (10 years of Fireworks original composition); Quest Theatre: *Roll for Initiative*; Sage Theatre Ignite! Festival: *Immediate Swoons*; Dancing Monkey Laboratories: *Sublimity - A Love Supreme*.

FILM/TV Olympic Opening Ceremonies 2010-present; multiple Michael Bublé TV Specials; FIFA Stadium Openings; World Expo Dubai; Royal Visit of Queen Elizabeth; Andrew Lloyd Webber Concert Tour; Lloyd the Conqueror; Little Red Ball Circus Company; *Secret history of the West; The Agreement; Wrath of God*.

TRAINING/TEACHING Mount Royal Conservatory Academy, Amici String School, University of Calgary, Vancouver Institute of Media Arts; String Masters; Private coaching and teaching.

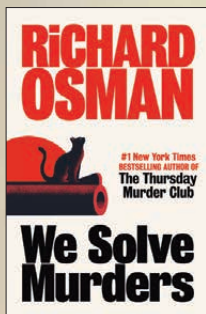
ET CETERA Supporting wild collaborative creative endeavours, technology in the arts and genuine expression!



**McNALLY
ROBINSON**

Recommended Reading

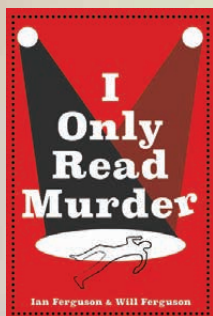
inspired by *The Play That Goes Wrong*



We Solve Murders
by Richard Osman



**Sondheim: His Life,
His Shows, His Legacy**
by Stephen M. Silverman



I Only Read Murder
by Ian Ferguson & Will Ferguson

McNALLY ROBINSON BOOKSELLERS
1120 Grant Avenue · The Forks · mcnallyrobinson.com

WHEN YOU SUPPORT US, YOU SUPPORT OUR COMMUNITY



**McNALLY
ROBINSON**

THE PLAY THAT GOES WRONG



Morgan Yamada

*Fight & Movement
Director*

ROYAL MTC First engagement.

OTHER THEATRE Fight Director: *A Streetcar Named Desire*, *Prison Dancer*, *Jersey Boys*, *Clue*, 9 to 5: *The Musical*, *The Fiancée* (Citadel); *Cinderella* (Alberta Musical Theatre Company); *Deathtrap* (Teatro Live!); *The Ministry of Grace* (Belfry). Assistant Director: *Almost a Full Moon* (Citadel). Actor: *The Three Musketeers*, *Pride and Prejudice*, *Peter and the Starcatcher* (Citadel); *Glory* (Chemainus Theatre Festival/National Tour/Original Cast - WCT, et al.); *GIANT* (Ghost River Theatre).

TEACHING Sessional Instructor - Stage Combat - MacEwan University - BFA Music Theatre Performance; AFDC - Fight Instructor.

ET CETERA Morgan is grateful to be part of *The Play That Goes Wrong* team! Learn more about her upcoming work at morganyamada.com and her work as one of Azimuth Theatre's Artistic Producers at azimuththeatre.com.



Daniel Fong

Assistant Director

ROYAL MTC First engagement.

OTHER THEATRE *Forgiveness*, *A Christmas Carol*, *Shakespeare in the Park* (TC); *The Three Musketeers* (Citadel/Arts Club); *Romeo and Juliet* (Bard on the Beach); *Joseph and the Amazing Technicolor Dreamcoat* (Rosebud Theatre); *US* (The Globe); *Alberta Kitchen Party*, *The Lion, the Witch and the Wardrobe*, *Rosencrantz*

and Guildenstern are Dead, *Fortune Falls*, *The Circle* (ATP).

ET CETERA Daniel Fong is a mixed-race Chinese/European performer and director born and raised in Moh-kins-tsis (Calgary) in the Treaty 7 region of Alberta and he is beyond excited to share this silly show with Royal MTC! Daniel was the recipient of the Stephen Hair emerging artist award in 2020. Daniel is supported by his amazing wife Nadia, his friends and family. Some shows are like building a house of cards and some shows are like knocking one down!



Michael Duggan

Stage Manager

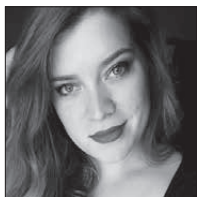
ROYAL MTC (selected) Stage Manager: *The Comeback*, *The Mountaintop*, *Clue* (with Grand), *Into the Woods*, *New, Calpurnia* (with NAC/BTW), *Vietgone* (with fu-GEN/Hope and Hell), *Hand to God*. Assistant Stage Manager: *Burning Mom*, *The Color Purple* (with Citadel), *A Christmas Carol*, *The Curious Incident of the Dog in the Night-Time* (with Citadel), *Chimerica*. 2022/23 National Mentorship Program.

OTHER THEATRE (selected) *The Nutcracker* (RWB); *The Little Mermaid* (2023), *The Wizard of Oz* (2022), *Mamma Mia!* (Rainbow Stage); *Space Girl*, *The War Being Waged* (PTE); *The Winter's Tale/Le conte d'hiver* (SIR/TCM); MTYP's *Midwinter Mosey* (MTYP); *The Flying Lovers of Vitebsk* (WJT); *Meet Me at Dawn* (TBTR).

TRAINING B.A. (Hons) in Theatre Production and Stage Management at the University of Winnipeg.

ET CETERA Enjoy the show!

THE PLAY THAT GOES WRONG



Lore Green
Assistant Stage
Manager

ROYAL MTC Stage Manager: *First Métis Man of Odesa* (Punctuate! Theatre Production).

OTHER THEATRE *A Christmas Carol, West Side Story, The Curious Incident of the Dog in the Night-Time, Sense and Sensibility, Haddestown, The Silver Arrow, Peter Pan Goes Wrong, Clue, Jersey Boys and The Importance of Being Earnest* (Citadel); *Timothy Findley's The Wars, Mamma Mia! and Titanic* (Grand); *Barvinok, Michael Mysterious and Alina* (Pyretic Productions); and the national tour of *First Métis Man of Odesa* (Punctuate! Theatre).

TRAINING BFA in Stage Management from the University of Alberta.



Sarah Lamoureux
Apprentice Stage
Manager

ROYAL MTC *The Sound of Music*.

OTHER THEATRE Stage Management: *Miss Shakespeare* (WST); *Snow White School Tour* (MTYP); *Neither Here Nor There* (s+t); *On marronne? Si ça te dit, viens* (TCM/Théâtre de l'Enfonnoir/l'Alliance Française de Ziguinchor). Apprentice Stage Management: *Twelfth Night* (SIR); *Summer of Semitism, Narrow Bridge* (WJT); *The Velveteen Rabbit* (MTYP).

TRAINING Graduate of the University of Winnipeg in Production and Stage Management.

ET CETERA Sarah (they/them) would like to thank their partner Juel and their family for all of their love and support! ●

CROATIA

Unleash Your Wanderlust

Start planning
your next trip

**BON
AVENTURE**
TRAVEL

bonaventuretravel.ca

204-488-6653

428 Academy Road,
Winnipeg, MB R3N 0C3

f @



Executive Director Evan Klassen with Artistic Director Kelly Thornton, PHOTO BY JERRY GRAJEWSKI

Meet our new Executive Director

It's not an easy task to step into the role of Executive Director but Evan Klassen is more than up for the challenge. Evan was born and raised in Winnipeg and has a rich history with Manitoba cultural institutions, including MTC where he started his career in the Box Office. Now he's back (in his dream role) to lead Royal MTC in close collaboration with Artistic Director Kelly Thornton.

We sat down with Evan for a Q & A and talked about his career in theatre and the arts.

How did you get involved in theatre originally and what attracts you to the art form?

I've had a long affiliation with the arts – both my parents were musicians in the WSO, and so naturally my first job in high school was as usher at the Centennial Concert Hall, followed closely by a stint at the MTC Box Office. Over the next decade, I had occasion to interact with stage managers and when I had the opportunity to shadow Wanda Bretecher for *A Chorus Line*, I was hooked. I pivoted my university career to a BA in Theatre Production, and the rest is history!

I've worked in a variety of arts genres but for me, theatre is where it's at. It's the most collaborative, the most creative, the most immediate. There's nothing like an audience laughing together, crying together, gasping with delight together.

You are very active in the arts community. What accomplishments are you most proud of?

What stands out MOST for me in arts leadership is when we're able to undertake unique projects with our limited resources and build a strong community connection. One recent project that I'm particularly proud of was a visual art project at the Grand Theatre – working with an Indigenous artist to create a welcome mural. I'm so pleased that this important visual art representation will welcome audiences for years to come, as a symbol of the theatre's commitment to reconciliation.

How do you hope Royal MTC will evolve under your leadership?

I'm honoured to be the next steward of Royal MTC. We're at a critical moment in time. Audiences are returning to theatre, we have a strong and stable foundation,

MEET OUR NEW EXECUTIVE DIRECTOR

and yet our business model continues to struggle with rapidly rising costs and static, if not declining, revenues. This is the moment to redefine who we will be, and what we will do, and I am excited to be co-leading this organization through this moment with Kelly. We will focus on creating relevant art for our audiences, ensuring that Royal MTC remains a vital organization in our community, and build strong connections between our staff, artists, audiences and volunteers.

We're also at a critical moment for Royal MTC's physical infrastructure. The John Hirsch Mainstage opened 54 years ago, and we are rapidly approaching the 30-year anniversary of the most recent major renovation. Both of our theatres face critical accessibility, security and energy-efficiency gaps that we will need to address in the coming years.

And most importantly, I'm keen to help continue nurturing MTC's commitment to reconciliation with Indigenous peoples and communities. I look forward to prioritizing this important work in the years to come.

Who are your favourite playwrights and plays?

Don't tell Kelly... but I'm a musicals kid at heart. My entry to theatre was via musicals and opera, so anything with a song rises to the top of my list. My favourite musical has always been *Les Misérables* (in that great battle for musical supremacy between *Les Mis* and *Phantom*). One of my favourite musicals that I worked on was *The Drowsy Chaperone*, here at MTC, directed by Steven Schipper. Champagne still makes me drowsy.

As far as plays go, I love a good farce. It's so delicious that the first production

of my tenure at Royal MTC is *The Play That Goes Wrong*. I promise, it's not an omen for my tenure here!

You recently moved back to Winnipeg. What excites you most about being back home?

For the past six years, my partner and I have been regular visitors to the city, taking home local treats, such as LBJ beer, Bothwell cheese, honey dill sauce and Pioneer farmer sausage. In the great Winnipeg quest to find the best kubbassa, my only choice is Metro Meats.

But in all seriousness, it's a joy to be back here reconnecting with the arts community. Winnipeg should be SO PROUD of having such a huge range of arts offerings to explore – and a diverse and talented community of artists that create these offerings – and we are equally lucky to have world-class arts organizations, like Royal MTC, at every turn.

Are you a cat or dog person?

Dogs all the way. Preferably big dogs. My partner and I have an adorable, energetic 8-year-old husky mix named Tika, from my partner's home community of Little Grand Rapids. Unfortunately, I'm allergic to cats – they literally make me want to claw my eyes out.

What does a relaxing weekend look like for you?

The arts never sleep, so a relaxing weekend isn't always in the cards, but on a relaxing weekend, I can be found at our family cottage, on the beautiful shores of Brereton Lake in the Whiteshell. ●



There is so much to celebrate because of you, our donors. As the curtain rises on another season, thousands of Manitobans of all ages will gather at Royal MTC to learn, grow, and be inspired by the power of story!

Your support allows us to tell these stories, with courage and vision. On behalf of the entire Royal MTC team, thank you. We are grateful for your support and the confidence you have shown in the work we do.

***“I’ve laughed, I’ve sung, I’ve danced in my seat, I’ve cried.
I’ve come home feeling moved and inspired.” – 23/24 Patron***

As we embark on the journey of another season, we are grateful to walk it with you, our generous donors. Every laugh, every song, and every moment of dancing in the seats will be a testament to your steadfast support.

Join our extraordinary group of donors by making your gift through mail, phone or at royalmtc.ca/donate. For more information, contact Brendan McKeen, Individual Giving Manager, at 204 954 6412 or bmckeen@royalmtc.ca.

From the bottom of our hearts, thank you and welcome back! ●

**SCAN HERE
TO DONATE
TODAY!**



THE
Free Press



PROUD SUPPORTER

OF OUR **COMMUNITIES**

To subscribe call 204-697-7001
or visit winnipegfreepress.com/subscribe

Welcome to the World of Gutenthal!



Preliminary set model for
The Recipe by Brian Perchaluk.

LOCATION Gutenthal (*pronounced GOOT-EN-TAHL*) – an imaginary prairie community between the Red River and Pembina Hills.

DATE Summer of 1960

LANGUAGE English with a mix of Flat German.

“The language of Gutenthal contains a mild additive I refer to as Flat German. This is an actual language spoken mostly by people of Russian Mennonite descent in places such as southern Manitoba, Mexico, Paraguay and Russia.” – Armin Wiebe, Playwright

SOME PLAUTDIETSCH/FLAT GERMAN VOCABULARY

Dow-nix: Good for nothing

Dievel: Devil

Duhpsijch: Doltish (stupid; idiotic)

Dummkopp: Dumb head

Dookkat: Rocking

Dringent: Eager, unrelenting, persistent

Dumma Esel: Dumb donkey

Feemäsijch: Brutally, bestially

Gott im Himmel: God in Heaven

Glutzing: Ogling, leering

Holem de gruel: Fetch the horror

Hutz Droat: Hog wire

Määradikj: Horse radish

Narsch: Ass

Muttatje: Mother

Schendlijch: Extremely

Schwengel: Lever, stick shift

Schniggelfritz: Scamp

Schmausing: Slobbery making out

Tjrieseled: Swirled, twisted

BACKGROUND ON ARMIN'S NOVELS/THEMES AND CREATION OF THIS PRAIRIE TOWN

In 1984, with the publishing of *The Salvation of Yasch Siemens*, Armin Wiebe created the world of Gutenthal and at its heart – its citizens. Since then, Armin has created a multi-generational pantheon of players and has re-birthed these characters throughout his novels, short stories and plays as vehicles for multiple stories in different times, places, situations and focal lenses. Readers of the book may recognize some events in this play from *The Salvation of Yasch Siemens*, but *The Recipe* explores an alternate universe remix of that story. By focusing this time on the female characters, Oata Needarp and Sadie Nickel, Armin reveals another side of Gutenthal life that the men don't see—the “women's stuff” everyone knows better than to flap their tongues about in the rural Manitoba Prairies of the 1960s.

DIG INTO THE GUTENTHAL EXTENDED UNIVERSE

*The Salvation of Yasch Siemens**

A novel (Published in 1984)

*Murder in Gunthenthal**

A novel (Published in 1991)

*The Second Coming of Yeeat Shpanst**

A novel (Published in 1995)

The Moonlight Sonata of Beethoven

*Blatz*** A play (World Premiere at Theatre Projects Manitoba in 2011)

Armin's Shorts

Short stories (Published in 2015)

*Grandmother Laughing**

A novel (Published in 2017) ●

*Published by Turnstone Press

**Published by Scirocco Drama

The Recipe

“A remedy prescribed by Dr. Wilhelm Toews of Rosenthal for women when their monthly period does not occur. Take 1 quart of yellow muscatel wine, 1 nutmeg, 1 loth star aniseed, 1/2 loth seasoned cloves, 2 solotnick fine cinnamon, 1 loth yellow ginger, 2 spoons horse radish roots. Mix this together in a jar and bury it in horse manure for 24 hours. Then drink 2 kopecke whiskey glasses of it, morning and evening with brandy.” ●

Recipe source: Conrad Stoesz, 'For women when their monthly period is late': Mennonite Midwives and the Control of Fertility, *Journal of Mennonite Studies*, 2016.





Playwright's Notes

BY ARMIN WIEBE

A story is never the whole story; there is always a possible spin-off story. *The Recipe* is a spin-off from my novel *The Salvation of Yasch Siemens* stemming from a slightly altered moment from the novel which quickly sprouts into a story of its own. While the novel is driven by Yasch's voice and point

of view, the play is powered by Oata. If you have read my Gutenthal novels you have met Oata. If you have not, I am pleased that you are here, ready to meet this abundant woman who has lurked in my imagination for over 40 years. Oata is (with apologies to Tennyson) a part of all women that I have met, and when story triggers occur to me, she sometimes appears with a context and then hounds me until I write it.

Although the play is fiction, *The Recipe* uses a real midwife's recipe cited in a paper by Conrad Stoesz called "'For women when their monthly period is late': Mennonite Midwives and the Control of Fertility." When I heard this paper presented in 2016, I thought, "There's a story here," but I had no idea what it was—until Oata bugged me.

While playwrights get the writing credit, plays are a collaboration. Rick Chafe and Rory Runnells made me rethink and discard the notion of an adaptation, and I initially wrote the opening scene for a workshop led by Yvette Nolan. Dramatists in Dotage (Brian Richardson, Sue Proctor, Bruce Sarbit, Jenny Gates, Kevin Longfield, Lynne Martin, Harry Nelken) shepherded me through the first draft. Suzie Martin provided valuable dramaturgy from a younger woman's perspective and led the first workshop hosted by Brian Drader and Manitoba Association of Playwrights. I thank Kelly Thornton of Royal MTC and Suzie Martin of Theatre Projects Manitoba for believing in the play. Director Ardith Boxall, dramaturg Brian Drader, and the talented cast have provided enthusiastic, insightful input throughout the workshop process. Check out the bios of the excellent design and production teams. A special shout out to Rory Runnells of MAP who insisted that I write him a play, and to Theatre Projects Manitoba who has supported my plays ever since. And gratitude to my first reader and dramaturg, Lynne Martin. ●

SYNOPSIS – Oata has some big decisions to make. Following the death of her father, not only does she have to deal with the property she's been left with, but whether Yasch, her fickle boyfriend, is really the man she can count on. You see, Yasch has confessed his attraction for Skinny Sadie Nickel which gives Oata no comfort. But when Sadie arrives at Oata's doorstep, fleeing a date from Pug Peters, she is looking to Oata for a solution. While Oata is faced with whether to help Sadie, she confronts her own looming decisions. With the threat of losing her family's property rising in the background, Oata and Sadie must work together to make choices that will impact their lives and allow them to come into their own power. ●



Director's Notes

BY ARDITH BOXALL

In 2011 when I was the artistic director at Theatre Projects Manitoba, the company premiered Armin Wiebe's first play *The Moonlight Sonata of Beethoven Blatz*. While a rookie playwright, Armin was an award-winning novelist, a Manitoba literary hero; an established artist. His stories were set in a (fictional) Mennonite farming community in Southern Manitoba. It was abundantly clear that the world of Gutenthal belonged on the stage.

The work was inherently theatrical, the characters authentic, inhabiting a world that was, to many, unfamiliar but beautifully relatable and unmistakably drawn from the land, culture, and experiences of its creator. Even if you had never been to a Mennonite farming community, never heard the rhythm and musicality of Armin's mixed up form of prairie English, you connected with it. The play's director Kim McCaw and Armin transformed the literary to the dramatic and *The Moonlight Sonata of Beethoven Blatz* was a smash hit. Other plays followed, including the dark and stormy *Wine and Little Breads* and now, *The Recipe*.

The residents of Gutenthal deal with flapping tongues, heartbreak, infertility, sexuality, being outsiders, social stigmas, death, loss and abandonment. With Armin's great guidance, they wrestle with internalized negativity from their community, face shame head on, take big risks, make mistakes and face their peers with bravado and sometimes compassion. They do this with humour, sarcasm, reluctant self-examination, and a tenacious hold on their wildest dreams.

Armin's characters exist between the turn of the last century and tonight. They bear witness to all the decades of their creators' life. They can exist in different times, storylines, and relationships as they explore issues of the day. In *Beethoven Blatz*, a young couple finds a creative solution to their infertility, and by doing so, empowers their own chosen community. In *The Recipe*, two young women find guidance from the silenced matriarchs and midwives of their own people, and discover the power and possibilities of forging their own way in the community by working together.

Oata Needarp, Yasch Siemens, Sadie Nickel and Pug Peters are young adults circa 1960. They were created by Armin in 1984, re-imagined in 2024, but were born on a windswept prairie in the late 1940s. They are here tonight to share the wisdom of the ancients, the freedom and frustration of being outsiders, the potential consequences of taking responsibility for your actions, and discovering the power of choice. ●

PRESENTS

A CO-PRODUCTION WITH THEATRE PROJECTS MANITOBA

The Recipe

By Armin Wiebe

November 7 - 23, 2024

PREVIEW November 6

Director Ardith Boxall†
 Set Designer Brian Perchaluk***
 Costume Designer Daina Leitold
 Lighting Designer Hugh Conacher**
 Sound Designer Ashley Au**
 Fight Director Jacquie Loewen
 Intimacy Director Aria Evans
 Voice & Dialect Coach Tom Soares
 Assistant Lighting Designer Anika Binding†
 Apprentice Director Alan Fehr*
 Stage Manager Zahra Larche
 Apprentice Stage Manager Devon Helm

THE CAST (IN ALPHABETICAL ORDER)

Yasch Siemens Toby Hughes
 Pug Peters / Male Caller Aaron Pridham
 Sadie Nickel Rhea Rodych-Rasidescu†
 Oata Needarp Amanda Shymko

The Recipe is performed without an intermission.

The following have been involved in the development of *The Recipe*: Dramatists in Dotage, Kevin Longfield, Brian Richardson, Bruce Sarbit, Harry Nelken, Sue Proctor, Jenny Gates, Lynne Martin, Suzie Martin, Manitoba Association of Playwrights, Brian Drader, Rhea Rodych-Rasidescu, Artie Lorraine, Tom Keenan, Toby Hughes, Royal Manitoba Theatre Centre, Theatre Projects Manitoba, Michelle Boulet, Aaron Pridham, Victoria Hill, Katie German, Kelly Thornton, Melissa Langdon.

Armin Wiebe is a member of the Playwright's Guild of Canada.

Production photography by Dylan Hewlett.

**Indicated designers on this production are represented by the Associated Designers of Canada, IATSE Local ADC659.

*Position funded through the Jean Murray - Moray Sinclair Theatre Apprenticeship Program

†Past Jean Murray - Moray Sinclair apprenticeship or scholarship recipient

THE RECIPE



Toby Hughes
Yasch Siemens

ROYAL MTC *Clue* (with Grand), *Yaga*, *All is Bright*, *Women of the Fur Trade*, *It's a Wonderful Life: The Radio Play*, *Nine Dragons* (with Gateway/Vertigo), *Sarah Ballenden*, *Hand to God*, *Alice Through the Looking-Glass*, *Shakespeare's Dog* (with NAC).

TPM *White Rabbit / Red Rabbit*.

OTHER THEATRE Selected: *The Golem's Mighty Swing*, *After Jerusalem* (WJT); *Chicago* (Pizza Party Productions); *Mr. Burns: a Post-Electric Play* (District Theatre); *Outside Joke: The Improvised Musical*, *Outside Joke: Big Dickens Energy* (Outside Joke/PTE); *The Hound of the Baskervilles*, *The Valley*, *The Dishwashers* (PTE); *Le Jardin* (Cercle Molière); *The Winter's Tale/Le Conte d'Hiver* (SIR/Cercle Molière); *Henry IV*, *Henry V*, *Julius Caesar*, *The Comedy of Errors*, *Richard III*, *Antony and Cleopatra* (SIR); *The Snail and the Whale*, *The House at Pooh Corner*, *The Hobbit*, *Liars* (MTYP).

FILM/TV *Sniper: Rogue Mission*, *Tales from the Loop*, *Channel Zero*, *The Pinkertons*, *Todd and the Book of Pure Evil*.

TRAINING University of Winnipeg.

ET CETERA Toby is a performer / producer with the musical improv collective Outside Joke.



Aaron Pridham
Pug Peters /
Male Caller

ROYAL MTC *Sense and Sensibility*, *Alice Through the Looking-Glass*, *The Hound of the Baskervilles* (tour).

TPM First appearance.

OTHER THEATRE *The Hound of the Baskervilles* (PTE); *The House at Pooh Corner*, *Dib and Dob and the Journey Home* (MTYP).

FILM *I Propose We Never See Each Other Again After Tonight*.

TRAINING University of Winnipeg Acting Honours.

ET CETERA Love to Ky, family, friends and all the pals in the Winnipeg theatre community.



Rhea
Rodych-Rasidescu
Sadie Nickel

ROYAL MTC *Beautiful: The Carole King Musical* (with Segal), *Into the Woods*. 2022/23 National Mentorship Program.

TPM First appearance.

OTHER THEATRE *Miss Shakespeare* (WST); *Merrily We Roll Along* (Dry Cold); *Tuck Everlasting* (Opera NUOVA); *People, Places and Things*, *Love's Labour's Lost*, *Arcadia* (U of W).

TRAINING BAH Acting University of Winnipeg.

ET CETERA She is a proud recipient of the Jean Murray – Moray Sinclair Scholarship. She first began working on *The Recipe* in an early workshop in 2021. Rhea is thrilled to be a part of this world premiere and finally share it with an audience. Thank you, Ardith, Armin and Suzie, our wonderful cast, and my friends and family for your love and support.

THE RECIPE



Amanda Shymko
Oata Needarp

ROYAL MTC First appearance.

TPM First appearance.

OTHER THEATRE *Munschtopia* (PTE); *Five East* (workshop) (Sick + Twisted); Shakespeare Fest's *HAMLET* (Bunchback'd Toads); *The View From Here*, *The Shorts* (Sarasvati); *A Fine Line* (PTE New Works Festival), *Her Wings* (Buried Seeds Productions); *Time and The Conways*, *Concord Floral*, *Rosencrantz and Guildenstern Are Dead* (U of W).

TRAINING Graduate from the University of Winnipeg Acting Honours Program.

ET CETERA Amanda is a fat queer interdisciplinary artist based on Treaty One Territory. They are absolutely honoured to bring a plus size character to life on this stage. All the love and thanks always to family, friends, M & I, and their knees for not giving out.



Armin Wiebe
Playwright

ROYAL MTC First engagement.

TPM *The Moonlight Sonata of Beethoven Blatz* (Premiere); *Wine and Little Breads* (Carol Shields Festival of New Works staged reading at PTE).

OTHER THEATRE *The Moonlight Sonata of Beethoven Blatz* (Station Arts Centre); *Wine and Little Breads* - short version (Winnipeg Mennonite Theatre).

ET CETERA Awards: Herman Voaden National Playwrighting Competition Honourable Mention (*Wine and Little*

Breads). Fiction: *The Salvation of Yasch Siemens*, *Murder in Gutenthal*, *The Second Coming of Yeeat Shpanst*, *Armin's Shorts* and *Grandmother*, *Laughing*. Tatsea, set in Canada's subarctic, was awarded the McNally Robinson Book of the Year Award and the Margaret Laurence Award for Fiction.



Ardith Boxall
Director

ROYAL MTC *King Lear* (assistant director), *Shakespeare's Dog* (actor, with NAC).

TPM Artistic Director from 2005 to 2021. Selected acting: *Ce Weekend La*, *Short Shots*, *I Do...Do You?*. Selected directing: *Age of Arousal*, *Monster Trilogy*, *John and Beatrice*, *Beautiful Man*, *Proud*, *Dragonfly*.

OTHER THEATRE Selected: *The Norbals*, *Zaidie's Shoes*, *Prairie Nurse* (director) (PTE); *Dolphin Talk*, *Mirror Game*, *The Lion*, *the Witch and the Wardrobe* (MTYP); *Our Country's Good* (director) (U of W).

FILM Ardith won a Blizzard Award for her performance in Jeff Erbach's prairie gothic feature film *The Nature of Nicholas*.

TRAINING BA hon's (4yr) in Theatre U of W.

ET CETERA Ardith and Andraea Sartison were the creators of *Chautauqua: The Interlake Trail* (TPM) which was awarded the Manitoba Arts Council's Connecting Creative Communities prize in 2019.

THEATRE PROJECTS MANITOBA

proud co-producers of The Recipe

Hello Theatre Lovers! Thank you for supporting local theatre—it means everything that you are here to celebrate and witness it with us.

On behalf of Theatre Projects Manitoba, I must say I am so delighted to be partnering once again with Royal MTC to bring you the World Premiere of ***The Recipe*** by Armin Wiebe.

After our critically acclaimed co-production of ***among men*** last season, we're thrilled to be back at the Warehouse to champion this heart-warming, funny, and empowering piece of Made-in-Manitoba theatre!

If you are new to TPM, I invite you to check out our website and sign up for our digital newsletter so we can stay in touch! And whether this is your first or fiftieth TPM show, please join us again in March 2025 for our next one—I'm so excited to share it with you...

– Suzie Martin, Artistic Director



PROPHECY



MARCH 19-30, 2025
THE RACHEL BROWNE THEATRE

PHONE: 204.989.2400 | EMAIL: boxoffice@theatreprojectsmanitoba.ca | WEBSITE: theatreprojectsmanitoba.ca



Canada Council
for the Arts

Conseil des arts
du Canada



CONSEIL DES
ARTS DU
MANITOBA
ARTS COUNCIL



WINNIPEG
ARTS COUNCIL

THE W.H. & S.E. LOEWEN FOUNDATION

WITH SUPPORT FROM
THE
WINNIPEG
FOUNDATION



RICHARDSON
FOUNDATION



Brian Perchaluk

Set Designer

ROYAL MTC Recent and favourites: *The Comeback*, *The Mountaintop*, *Clue* (with Grand), *Burning Mom*, *The Three Musketeers*, *The Color Purple* (with Citadel), *The Cottage*, *Sarah Ballenden*, *Black Coffee*, *Billy Elliot the Musical*, *Harvey*, *August: Osage County*, *Picasso at the Lapin Agile* (with NAC), *M. Butterfly* (with NAC).

TPM *Goodnight Desdemona Good Morning Juliette*, *The Moonlight Sonata of Beethoven Blatz*, *Proud*.

OTHER THEATRE Brian's work has been featured at theatres across the country, including two seasons each at the Shaw and Stratford festivals. Selected recent credits include: *La Cantatrice chauve et La Leçon* (Théâtre Cercle Molière); *The Hockey Sweater* and *The Little Mermaid* (Rainbow); *Post Democracy* (PTE).

TRAINING Graduate of U of W and NTS.

ET CETERA Recipient of Gemini, Jessie Richardson, Prix Rideau and Evie Awards.



Daina Leitold

Costume Designer

ROYAL MTC Costume Designer: *among men* (with TPM). Set & Props Designer: *Mix Tapes From My Mom* (regional tour). Assistant Costume Designer: *The Three Musketeers*.

TPM Costume Designer: *among men* (with Royal MTC), *End of the Line* (with Walk & Talk). Set & Costume Designer: *Red Earth** (with One Trunk).

OTHER THEATRE Costume Designer: *RENT* (Rainbow); *Twelfth Night* (SIR); *Narrow Bridge*, *Bar Mitzvah Boy* (WJT); *Awaken* (SIR/zone41). Set, Props & Costume Designer: *Fame* (WST); *Hamlet*, *Timon of Athens* (SIR); *Glad to Be Here*, *Edward II* (TBTR); *The Cherry Orchard* (TBTR & Echo Theatre); *Bike and Circuses* (Green Kids). Set & Props Designer: *Year of Magical Thinking* (PTE); *The Dark Lady*** (SIR/Shakespeare on the Saskatchewan); *Plé* (MTYP).

ET CETERA *Evie Award for Outstanding Production Design. ** SATAward nomination for Production Excellence.



Hugh Conacher

Lighting Designer

ROYAL MTC (selected) Lighting & Video Designer: *The Lehman Trilogy*, *The Mountaintop*, *Vietgone*, *Venus in Fur*. Video Designer: *Network* (with Citadel). Lighting Designer: *among men* (with TPM), *Beautiful: The Carole King Musical* (with Segal), *The Secret to Good Tea*, *Into the Woods*, *New, Orlando*, *Women of the Fur Trade*, *Fun Home*, *The Color Purple* (with Citadel), *Kill Me Now* (with NAC), *Seminar* (with Mirvish), *Dry Lips Oughta Move to Kapuskasing* and many other productions since the '80s.

TPM Hugh has designed lighting, video and sets for 28 productions with Theatre Projects Manitoba since 2006.

OTHER THEATRE He collaborates with choreographers, visual artists and dance and theatre companies worldwide.

ET CETERA Hugh's photographic work resides in private collections and has been published worldwide. He is a member of the Associated Designers of Canada and L'Association des professionnels des arts de la scène du Québec. www.pellucid.me



SHOP ONLINE

—
**click & collect
or delivery**



LIQUOR MART



LiquorMarts.ca

18+ ENJOY RESPONSIBLY

THE RECIPE



Ashley Au
Sound Designer

ROYAL MTC *The Lehman Trilogy*, among men (with TPM), *Burning Mom*, *Sexual Misconduct of the Middle Classes*, *Trouble in Mind*, *Orlando*. 2022/23 National Mentorship Program.

TPM among men (with Royal MTC).

OTHER THEATRE *The Year of Magical Thinking* (PTE).

TRAINING B.Mus (Jazz Performance) Brandon University, School of Music.

ET CETERA Ashley Au (she/they) is a Winnipeg-based bassist, composer, sound artist, arranger and queer creative. A multifaceted musician, Ashley specializes in the upright and electric basses – performing, touring and recording extensively for the last 15 years. Current and past projects include work with Weakerthans frontman John K. Samson; composer/trumpeter Chuck Copenace; and Polaris Prize-nominated hip-hop outfit Super Duty Tough Work. As a composer, Ashley has had work commissioned and performed nationally and internationally. She has most recently had work premiere at the Senate of Canada in Ottawa as well as had work exhibited in London, UK. She is the Artistic Director for Cluster: New Music + Integrated Arts Festival.



Jacquie Loewen
Fight Director

ROYAL MTC Fight Director (selected): *The Mountaintop*, *Clue* (with Grand), *Yaga*, *Into the Woods*, *The Rez Sisters*, *Roald Dahl's Matilda the Musical* (with Arts Club/

Citadel), *Vietgone* (with fu-GEN/Hope and Hell), *Hand to God*, *Private Lives*, *Gone With the Wind*, *August: Osage County*, *Romeo and Juliet*, *The Seafarer*. Actor: *The Three Musketeers*, *Alice Through the Looking-Glass*, *Top Girls*.

TPM Director/co-creator: *In Time*.

OTHER THEATRE Fight Director (selected): *Macbeth* (Bard on the Beach); Indigenous Playwrights New Works Workshop (PTC – Vancouver); *Beauty and the Beast* (Rainbow); *The Flood Thereafter* (CS); *Don Giovanni* (Manitoba Opera); *Macbeth*, *The Merry Wives of Windsor*, *The Taming of the Shrew* (SIR); *Prairie Nurse* (PTE).

TEACHING U of Winnipeg, U of Manitoba, Trinity Western, Simon Fraser University, Kansas State University.

ET CETERA Jacqueline was a founding member of the Canadian Comedy Award-nominated sketch group Hot Thespian Action.



Aria Evans
Intimacy Director

ROYAL MTC First engagement.

TPM First engagement.

OTHER THEATRE Choreographer & Intimacy Director: *Aportia Chryptych: A Black Opera for Portia White* (COC); *Every Little Nookie* (Stratford). Intimacy Director: *Richard II* (Stratford). Assistant Director & Intimacy Director: *Queen Goneril* (Soulpepper).

FILM/TV Intimacy Coordinator: *When Stars Align* (Lifetime); *We Three Queens* (OutTV); *Really Happy Someday* (Spindle Films); *Sworn Justice: Taken Before Christmas* (Black Entertainment Television).

TEACHING Assistant Professor in the Theatre and Film department at the University of Winnipeg.



We're proud to
support **Royal MTC's**
deep commitment to
bringing Manitobans
exhilarating theatre.

FillmoreRiley

FillmoreRiley.com

Fillmore Riley LLP

Lawyers and Trademark Agents

THE RECIPE



Tom Soares

Voice & Dialect Coach

ROYAL MTC Coaching: *among men* (with TPM), *Trouble in Mind*, *The Rez Sisters*, *Jane Eyre*. Acting: *Much Ado About Nothing*, *Richard III*.

TPM Coaching: *among men* (with Royal MTC), *Iceland*, *Mary's Wedding*.

OTHER THEATRE Coaching: *The Winter's Tale*, *Hamlet*, *Richard III* (SIR); *Little Thing*, *Big Thing* (PTE); *Shrek* (Rainbow). Acting: *A Gentleman's Guide to Love and Murder*, *Little Women*, *Urinetown* (Dry Cold); *Hamlet* (Bunchback'd Toads); *Passion* (Red Hen Productions); *Annie* (Rainbow); *The Odyssey* (SIR); *Troilus and Cressida*, *Measure for Measure* (Tom-Tom Theatre).

FILM/TV Coaching: *The Porter*, *Esther*, *Incident in a Ghostland*. Acting: *The Spencer Sisters*, *Love in the Alps*, *Burden of Truth*, *Nobody*.

TRAINING/TEACHING MFA in Acting with a Voice Specialization from York University. Tom regularly teaches courses on voice and performance for the Department of Theatre and Film at the University of Winnipeg.

ET CETERA I'm so glad to be back at Royal MTC and TPM supporting another fantastic group of artists!



Anika Binding

Assistant Lighting Designer

ROYAL MTC Apprentice Lighting & Video Designer: *The Lehman Trilogy*. Apprentice Lighting Designer: *The Mountaintop*. Assistant Lighting Designer: *among men* (with TPM).

TPM Assistant Lighting Designer: *among men* (with Royal MTC).

OTHER THEATRE Lighting Designer: *Miss Shakespeare* (WST); *From Up Here* (U of W). Costume Designer: *Miss Shakespeare* (WST); *Liars at a Funeral* (Magnus); *Stupid Fucking Bird* (U of W). Stage Management: *Something Rotten!* (MTYP); *Scenes from Love and Information* (U of W). Assistant Lighting & Set Designer: *The Prom* (Dry Cold).

TRAINING BA Hons. in Theatre and Film from the University of Winnipeg, with specializations in Design, Stage Management & Production, and Directing.

ET CETERA Anika would like to thank her friends, family and mentors for their endless support.



Alan Fehr

Apprentice Director

ROYAL MTC First engagement.

TPM First engagement.

OTHER THEATRE *The Naked Mennonite*, *The Mennonite Fairytale* (Real Live Entertainment).

ET CETERA Alan is thrilled to be in the "big city" and will have many stories to share when(/if) he returns to Steinbach.

Available in the
THEATRE
and
served at
Torque taproom,
restaurants
and Liquor Marts.

TORQUE BREWING

CRAFTING TRUST IN EVERY BREW.



Jones & Company
— WINE MERCHANTS —



Shop Local, Globally.

1616 St. Mary's Road Winnipeg, Manitoba
204.948.WINE (9463) | Text a Somm: 204.400.0499
joneswines.com | wine@joneswines.com

THE RECIPE



Zahra Larche
Stage Manager

ROYAL MTC Stage Manager: *Sexual Misconduct of the Middle Classes*. Assistant Stage Manager: *Beautiful: The Carole King Musical* (with Segal), *The Sound of Music* (with Citadel), *Into the Woods*, *Network* (with Citadel), *Calpurnia* (with NAC/BTW), *Bang Bang* (with Belfry). Apprentice Stage Manager: *Buying the Farm* (tour), *Roald Dahl's Matilda The Musical*, *Vietgone* (with fu-GEN/Hope and Hell), *The Humans*. Assistant Production Manager (2017/18, 2020/21, 2021/22 seasons).

TPM First engagement.

OTHER THEATRE Stage Manager: *Mary Poppins*, *The Hockey Sweater* (Rainbow); *The Outside Inn* (PTE). ASM: *Volare* (PTE). Various credits with Hudson Village Theatre, Manitoba Opera, Geordie Productions and A Company of Fools.

TRAINING Graduate of the National Theatre School of Canada - Production Program (2017).

ET CETERA Special thanks to my MTC family, my parents, Ilana, Jenna, Brooklynne, Liam and Matt!



Devon Helm
Apprentice Stage Manager

ROYAL MTC Apprentice Stage Manager: *The Piano Teacher*, *Trouble in Mind*. Child Supervisor: *The Comeback*, *The Sound of Music*.

TPM Stage Manager: *Climate & Main*.

OTHER THEATRE *The River, Pool* (No Water) (Stage Manager - Winnipeg Fringe Festival). For U of W: *365 Days/365 Plays*, *Alunsina's Love* (Stage Manager), *Love of the Nightingale*, *Love's Labour's Lost* (Assistant Stage Manager), *Frankenstein* (Production Assistant), *Time and the Conways* (Sound Designer), *Everybody* (Set Designer), *Concord Floral* (Wardrobe Coordinator). *FAME the Musical* (Design Mentee - WST).

TRAINING University of Winnipeg Bachelor of Arts - Stage Management & Production. SMArts Conference 2023.

ET CETERA All my love to my family and friends! ●



With every
community,
we redefine
what's possible

Visit stantec.com to learn more.





Elevating arts and culture

Air Canada is a proud airline partner of the Royal Manitoba Theatre Centre's Black & White Ball. We soar together when we support arts and cultural institutions in the communities we serve.

#FlyTheFlag @aircanada

Élevons les arts et la culture

À titre de transporteur aérien, Air Canada est fière partenaire de l'événement Black & White Ball du Royal Manitoba Theatre Centre. En soutenant les institutions culturelles et artistiques dans les collectivités que nous desservons, nous les aidons à aller toujours plus haut, avec nous.

#HautLeDrapeau @aircanada

A STAR ALLIANCE MEMBER
MEMBRE DU RÉSEAU STAR ALLIANCE



AIR CANADA



**Proud partner
of Royal MTC
and more than 400 other
Manitoba organizations.**

**MANITOBA
LIQUOR
& LOTTERIES**



#MBLLGoodTogether

Congrats

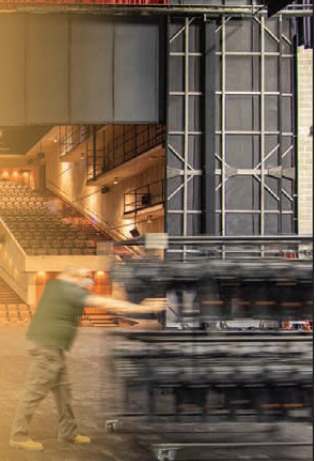


on 125 years!

**Royal MTC is proud to work with IATSE
Local 63 members who work behind the
scenes building and running the show!**

**ROYAL
MTC**
MANITOBA THEATRE CENTRE

PHOTO BY JERRY GRAJEWSKI



SUPPORTERS

Many thanks to our donors
who made a gift between
Aug 1, 2023 and Sep 20, 2024

DIRECTOR'S CIRCLE

\$10,000+

Gail Asper, OC, OM, LLD* &
Michael Paterson
Linda McGarva-Cohen & James
Cohen
June & Bob Jackson Memorial Fund
for the Performing Arts - The
Winnipeg Foundation
Johnston Group Inc.
Ken & Sharon Mould
Robinson Family Foundation Fund -
The Winnipeg Foundation
Todd & Kellie Tanchak

\$6,500-9,999

Houston Family of Bradwardine
Fund - The Winnipeg Foundation
Mr. Leslie Taylor
Dr. Marcel Van Woensel
Denise Waldman

\$4,000-6,499

Zita & Mark Bernstein Family
Foundation
Pauline Braun - in memory of Duane
Braun*
David Christianson & Vera
Steinberger
Susan Glass & Arni Thorsteinson
Camilla Holland & Colin Viebrock
Diane & Dave Johnston
Evan Klassen* & Bert Keeper*
Hildegard Loewen
Elizabeth Marr & Nick Slonosky
Dr. H. Nyhof & Ms. Jo-Anne Lutz
Gerry & Barb Price
Hartley & Heather Richardson
James & Janice Tennant

\$2,000-3,999

Dr. J Baluta & Ms. O. Kandia
Emily Burt*
David & Lianne Carefoot
David* & Barb Christie
Gerry* & Chris Couture
Kerry Dangerfield**
Ben & Shari Diamond
Tony* & Jennifer Fletcher*
Linda Hamilton & Grange Morrow*
Sharon Hamilton*
Derek & Mary Johansson
Myron & Marion Klysh
Dr. P. Kmet & Mr. B. Roslycky

Donna & Dave* Lalama
Katrina Lee-Kwen & Jeff Neufeld
Brendan M'Keen**
Leigh Murphy - in memory of Liam
Murphy*
Drs. Bill Pope & Elizabeth Tippet
Pope Fund - The Winnipeg
Foundation
Sanford & Deborah Riley
Bill & Laurie* Speers
Mait & Pat Sundmark
Kelly Thornton* & Josep
Seras-Gubert*
Jeremy Trickett & Brandon Barnes
Trickett*
Helga Van Iderstine
Scott & Sonya Wright Fund
Anonymous

\$1,200-1,999

Edward* & Jaime Acuna*
Craig McIntosh & Lorraine Beck Fund
Todd Bourcier
Sheldon & Penny Bowles
Doneta Brotchie, CM* & Harry
Brotchie*
Chambers Family*
Hadera & Mark Chisick
Jan & Kevin Coates*
The Circle Foundation
Hugh Conacher*
Matthew Cutler & Dr. Avery Miller
Dr. Lawrence & Ms. Brenda Ellerby
Corinne Ratuski & Brad Favel*
Sylvia Flam*
Katherine Fox**
Susan* & Ab Freig*
John* & Nicola Guttormson*
Barbara Hamilton
Gregg & Mary Hanson
Vivian Hilder-Skward & David Skward
- in memory of Mike Skward*
Shawn Hughes & Bruno Koehn*
Katie Inverarity*
Danielle Jobb & Brendan Roddy
Lisa Johnston*
Serena Helen Kraayeveld Fund -
The Winnipeg Foundation
David* & Ellen Kroft*
J. Lamothe*
Rick Lee & Laurie Shapiro
Peter & Karen Leipsic
Andrea Lochhead
Gail Loewen
Teresa Lopata & Bruce Wagg
Reginald & Judy Low
Dr. Douglas MacEwan*
Mark & Gloria Mancini*
Jim* & Penny McLandress*
Melissa Novocosky*
Wayne & Linda Paquin
Donna Plant

Francis Pollard
K. Heather Power & Harold Klause*
Jocelyne Prefontaine**
Lawrence Prout* & Lisa Gardewine*
Margaret Redmond* & Greg Gillis*
Nancy & Loren* Remillard
Sudhir Sandhu**
Ken & Susan* Skinner*
Donald Smith*
Kevin Hines & Shelly Smith-Hines*
Joan Stephens - in memory of
Annice Stephens*
Sasha & Josh Thiem*
Geeta* & Michael Tucker*
Vicki Verville*
Grant & Trish Wainikka
Murray & Nancy Wiegand
Winnipeg Theatre Awards
Rick & Claire* Workman
Dr. & Mrs. James & Kim Zacharias
Nicole Zajac*
Anonymous

COMPANY CIRCLE

\$600-1,199

Robert & Ina Abra Family Fund -
The Winnipeg Foundation
Margaret Astwood
Janet & Marcel Belanger
Ryan Bernier
Kris & Ruth Breckman
D. J. Cowan
J. Davidson*
Neil & Sherry Fast
Felicia & Trevor Frost
Brad & Jenn Gesell
Tyler Gompf
Charles Henaire
Rodney Hick & Tracey Jackson
N & L Holliday
Sylvia Jansen
Gerald Jewers
Hon. William Johnston
JWMTA Medical Corporation
Peter Kingsley, KC*
Hester Kroft
John & Heather Lea
Ian & Nicki LeGrand*
Shirley Liba
Tim Preston & Dave Ling
Linda & Ray Loewen
Pat & Jim Ludwig
Brian & Christie Lysack*
Garry Markham
John & Natalie Mayba
Carol & Barry* McArton
Campbell & Lorraine McIntyre
Terri & Jim McKerchar*
Ron McKinnon* & Peggy Barker*

*Current Royal MTC Board of Trustees/Advisory Board members **Current Royal MTC staff *Monthly Donors/Drama Club *Fondly Remembered

SUPPORTERS

Erin Meyer
Carolyn Garlich & Peter Miller Gift Fund
Brendan Mitchell
Marika Nerbas
Tracey Novak
Richard & Bonnie Olfert
Ivan & Cathy Oresnik*
Cam & Carole Osler
Pierre Ouellet
Lorraine & Ernest Reinfort
David & Joan Rew
Henriette Ricou & Jure Manfreda
Jean Riggall†
Debbie Roy
Edith & Emile Samuels
Barbara Scheuneman
Renate & Bill Schulz
In memory of Sybil Shack for
the benefit of MTC - Jewish
Foundation of Manitoba
Carol & Ron Slater Fund - Jewish
Foundation of Manitoba
Deborah Spracklin
Scott Stewart
Sandra Tankard*
Susan Taylor
Leah R. Janzen & Ian R. Thomson
Dr. Peter Triggs*
Faye Warren
Margaret Wollner*
Dr. Dorothy Y. Young
4 Anonymous

\$250-599

Pat & Darrell Adams*
Dr. Liz Adkins
Bob Adkins - in memory of Nancy
Adkins
Glen Agar & Pam Reimer
Dawn Andersen
Jay & Judy Anderson
Elizabeth B. Armytage Fund - The
Winnipeg Foundation
Jennifer & Scott Ash
Peter Attwood
Brenna Bacchus*
Peter Bagot
Zaz Bajon & Patricia Hunter
Glenn & Norma Baldwin
Olga & Ivan Banias
Earl & Cheryl Barish
Dr. Corinne Barrett DeWiele &
V. Michael DeWiele
Dianne J. Beaven
Larry Beeston & Anna Sikora
Terri & Morley Bernstein
Bruce & Joyce Berry
Susan & Edwin Bethune
Helga & Gerhard Bock
Lilian Bonin & Daniel P. Levin
John & Marilyn Bourbonnais

Ron & Joan Boyd*
M. Braid
Billy Brodovsky & Libby Yager*
Sheila & David Brodovsky
Brian Brown
Ellen & George Bruce
Donna Byrne
Colleen Cariou & Ron Maier
A R Carr
Brenlee Carrington Trepel KC &
Brent Trepel
Leesa Carter & Colin Morrison
Cheryl Chaban
Gertie Chipka
Ken Clark & Pamela Lockman
Agnes & John K. Collins
Josie Cosyns
Jim & Gwen Court
Christopher Courtney
Robert Coutts*
J. V. Dale
Verna Danylchuk
Doug De Graff
Sharron & Joel Dudeck
SJ Duncan Medical - in memory of
Myrtle Bird
Craig & Claudette Dunn
H. Dyck
Glen* & Joan Dyrda
Michael Easton
Greg Edmond & Irene
Groot-Koerkamp
Ruth & Ernest Epp
Fran Falzarano
Kate Hodgert-Fennell*
Pat & Doug Finkbeiner
Gayle Fischer
Maureen Flaherty & Fred Beckwith
Andrea Forbes-Avila*
Pamela & Kevin Friesen
Adrian Frost & Kerra Mruss
Paul Daeninck & Monica Furer
Colleen & Dan Furlan*
Daniel Gagnon
Lynne & Lindsay Gault*
Trish Gehle-Preston
Denise & Ron George
Heather Gillander
Jan Gordon*
Kayla Gordon & Art Maister
L. Graham
M. Gray
Graham Hiagh
Thomas & Nadia Hall
Noella & Patrick* Hanan*
Doug & Sylvia Hannah
Brian & Dawn Hanson - in memory of
our Daughter, Kristin Dawn Hanson
Linda Harlos & Adrian Wildsmith
Kathryn & Wayne Harrison
Valerie & Robert Hazelton
Frank & Sue Hechter*

Marilyn Hendzel*
Judith & Eric Hinton
Ted & Cathy Hlynsky
Rob & Jen Hochkiewicz*
Betty Hoffmann
Michael & Crystal Hollas*
Ken Houssin*
Dan & Karen Ilchyna
Crystal & Gunter Jochum
Marilyn & Sheldon Joyal
Michael Joyal, esq.*
Joanne & Rod Kamins
Sherry Kaniuga*
Sheryl Kapititz & Aaron London*
Joel & Danna Kaplan
Sandy & Joan Kellett
Joan Kennedy
Robert Kennedy & Claudette Leclerc
Adam & Tara Klaponski
Betty Klassen
Julie Ann Kniskern
Donna Korban & Family
Carol Campbell & Andy Krentz
Howard & Jane Kroeger
Robert Lafond
Cheryl Langer
Barbara Latocki
Desiree Lavallee**
Bob Leggett
Richard Leipsic & Kerrie Halprin
John & Roberta Lewis
Charles & Diane Littman
Sarah, Chris & Lori Luby
Brent Schacter & Sora Ludwig
Tom Lussier
Jim MacGregor & Christine Halma
Judith Manning
Cheryl & Eric Matheson
Monique Marynard
Barbara McCandless
Jim & Lynne McClelland
Marlene & Ian McKay
Greg & Gloria McLaren
John & Carolynne McLure Fund -
The Winnipeg Foundation
Donald G. McNabb
Melissa McRae
Barb Melnychuk
Albert & Judith Metcalfe*
Susie Miclash
Irene Miller & the late Claire Miller
Catherine Lambeth & Grant Mitchell
Sharon & Michael Moffatt
Dr. Catherine Moltzan & Paul Brault
Marc Monnin & Donna Miller
Tom & Susan Mooney
Sagan Morrow*
Cindy Mostow
B. Nagamori
Brad Nance
Vanessa Dowostawski
D. & G. Nytepchuk

*Current Royal MTC Board of Trustees/Advisory Board members *Current Royal MTC staff *Monthly Donors/Drama Club †Fondly Remembered

SUPPORTERS

Joanne Olchowecki
 Jean-Pierre Parenty & Michelle Smith
 Linda Pashniuk
 Peter & Anita Pelech
 Maryam & Izzy Peltz Fund - Jewish
 Foundation of Manitoba
 Bonnie Penno*
 Linda & Rob Pettit
 Rick Pinchin
 Beth Pollard
 Maureen Prendiville & Paul Jensen
 Estate of Doris Quinn
 Carole Rankin*
 Lucas Redekop
 Nalini Reddy*
 Fay Reich
 Cheryl Reid
 Mr. & Mrs. William Reynolds
 Kevin Kuryk & Riva Richard
 Andrea & Michael Robertson*
 Deborah & Neil Rostkowski
 Paul & Cathy Samyn
 Onnolee Scharf*
 Roland Schneider
 Trudy Schroeder
 Harald & Vicki Schulz
 Faye Scott
 Sharon Shaydak
 Blake Shiaro
 Cheryl & Gordon Siemens
 Marc Simard
 Ms. Judy Nichol & Dr. Jim Skinner
 Lillian Smith
 Mark C. Smith & Sabrina & Siena
 Smith
 Maddi Soubry
 Christine Soubry
 Peter & Geri Spencer
 Anthony Steffes & David Viggars
 Jodee Stewart
 Lisa Stiver
 Jonathan Strauss
 Eleanor Suderman
 Mary Ann Supleve
 Shayne & Kathryn Taback
 Ray & Fenella Temmerman
 Malcolm & Shirley Tinsley
 Douglas & Deanna Tkach

Jen & Kevin Tomanek
 Gord & Lorena Trann
 Brad Baydock & Wendy Tretiak
 Dr. Stephen Tritt & Dr. Sharon
 Goszer Tritt
 Cathy & Terry Tully
 Grant Tweed
 Dr. Kristel van Ineveld
 Gwen & Helmut Waedt
 Jerry & Karen Wake
 Stirling Walkes
 Deanna Waters
 Leslie & Sean Watson
 Tamara & John Wells
 Michael & Lydia West
 Lionel & Lorraine Wiens
 Theresa Wiktorski
 Kathleen Gough & Tim Wildman
 Catherine Wilkie
 Gustine & Dennis Wilton
 Reed & Arla Winstone
 Deborah A. Wolfe
 Margaret & Paul Wright
 Allana & Eden Wyness*
 A Young
 Olia & Roman Zubach
 Anonymous*
 16 Anonymous

\$150-249

Robert & Patricia Adamson
 Jay & Judy Anderson
 Lynne M Arnason
 Dennis & Elaine Schultz
 Margaret Askeland
 Nadine Audet*
 Rose Aziman
 Ian & Carolyn Backus
 Richard & Nancy Ball
 Richard & Josie Bartlinski
 Karen & John Bate
 Brenda Batzel
 Andrea Bellhouse
 Susan & George Benias
 Byrnes Benoit
 Trish Bergal
 Trust Beta
 Don & Diane Bewell

Val & Blair Bingeman
 Joan Blight
 Mavis Bollman & Ray Hesslein
 Jenna C. Boucher-Cowie
 Bruce & Karen Boyd
 Patricia Bozyk
 Janine Brémault Bamford
 Jackie & Steve Broda-Milian
 Gerald R. Brown
 Carol Budnick
 John Burrows
 Cheryl Butler
 L. K. Butler
 Corinne Campbell
 Debbie Campbell
 Don & Carolyne Campbell
 Laura Campbell
 Jody Chalmers & Monique Perro*
 Doug & Monica Chapman
 Lawrie & Bea Cherniack
 Duane Cheskey & Georgia Kerr
 Dr. T. I. Choptiany
 Katherine Cobor
 Diane Connelly
 David & Kathy Connor
 Susan Copeland
 Sarah Corley
 R. Lynn Craton
 Drs. Kristen Creek & Josh Manusow
 Margaret Cuddy
 Bradley J. Curran
 Tracy Dahl, CM
 Georges Damphousse
 Werner & Judy Danchura
 Linda Daniels
 Chris Darazsi*
 Andre & Diane de Rocquigny
 Bev & Allan Doern*
 Heather Domke
 Sheila Domke & Stephen Ross
 Tom Dooley
 Rita Dorn
 Rob Dryden
 John & Ada Ducas
 Roberta Dyck
 John Edwards & Wendy Stelko
 Ken & Lesley Enns
 Anthony Esposito

For just \$10/month your membership gets you access to the backstage drama at MTC. Includes monthly stories, tours of the building, special events with seasoned professionals, plus a full tax receipt and all the benefits of being a Star Patron.



ALREADY A DONOR AND INTERESTED
 IN SWITCHING TO MONTHLY GIFTS?
 CALL BRENDAN AT 204 954 6412.

ROYALMTC.CA/DRAMACLUB
 FOR MORE INFORMATION

PHOTO BY LEIF NORMAN



SUPPORTERS

Jemara Fay*
 Pablo & Carrie Felices-Costello
 Marion Fellingner
 The Ferriers
 Patricia Fitzpatrick
 Nancy Flintoft & John McWilliams
 Lawrence Foster*
 Donna Frame*
 Christine M Freeman
 Ron Gaffray
 Gloria & Rick Gallant
 Helen Garrod
 Patti & Rick Gilhuly
 John & Marcia Gordon
 Jennifer Graham
 Abigail Grieder
 Dr. Darrell Grymonpre
 Sandra Guadagni
 Derryl & Linda Hall
 Joan Hanton*
 Don Hardy
 Joanne Harris
 Shellie & Grant Hatch*
 Kyle Hendin & Breanne Korban
 Karen Herd
 Mary & David Hickling
 Hilary Druxman Design
 Mary Hodge
 Vicki Hooke
 Keith & Karen Horn
 Colleen Hrabitt*
 Lisa Hunt & Hugh Wichenko*
 Jean Hyrich
 G. C. Irwin-Kilfoyle
 Stu & Alice Iverson
 Heather D. Janik
 Dave & Lesia Johns
 Tiffany Johnson-Sheldon
 Robert & Karen Johnston
 J.H. Kaminsky
 Lydia Kandia
 Sue & Richard Kathler
 Don & Sheila Katz
 Gail Keeley
 Penny & Brian Kelly
 Howard Kideckel
 Vernon & Roselin Klassen
 John & Kathryn Knowles
 Ms. Julie Koehn
 Peter Kohut - in memory of my
 Spouse Valerie Kohut
 Janice & Richard Kostelnyk
 Jacki & Sheldon Koven
 Lesley Koven & Eric Thomas
 Lorraine Kraichy*
 Paula Kristjansson Hasiuk
 Teena Laird
 Doug Larcombe
 Bryen Lebar & Patricia Sauder*
 Saul & Kathy Leibl
 Tim & Kate Letkemann*
 Carol & Clifford Levi

Stan & Susan Lipnowski
 Dr. Karen Lischka
 Judy & Eric Lister
 John & Joy Loewen*
 Israel & Maylene Ludwig
 Carole Lupkowski
 Carol Ann Lussier - in memory of
 Joanne
 Wally MacMartin
 Ilse Marotta
 Lynne Martin* - in memory of Omar
 Martin
 Agatha Massey
 Linda Matheson
 Judy McCleary
 Barry McNabb
 Catarina Mello Schultz*
 Loretta Merriam
 Constantina Metaxas
 Heather Mian
 Jim & Karren Middagh
 Gail Mildren - in memory of Walter
 A. Mildren
 Cressida Mills
 Allison Moore*
 Marlene Mortimer
 Shelley Muir
 Susan Munroe
 Harold & Nancy Nagy
 Rhea Nelken
 Andrea Neufeld
 Leslie Nichol
 Robert Nickel
 Valerie Nielsen
 Tom Nowicki
 Irene Onuch
 R. Ooto
 Cynthia Orris
 Theresa Oye
 Paulette Pappel
 Sonjia Pasiechnik
 Sandra Paterson-Greene & Russ
 Greene
 Craig Patterson*
 Myron Pawlowsky & Susan Boulter
 Jo-Anne & Harvey Peltz
 Harold & Ingrid Peters Fransen
 Donald & Elaine Peters
 Denise Plett
 Carolyn Porhownik
 Nancy & Brett Porth
 M. Lois Powne
 Arlene Prasek
 Tammy Rabkin
 Vivian E. Rachlis
 Roberta & Rick Rackal
 Dr. R. & Audrey Ramchandar
 Jim & Kathy Ranick*
 Linda Ratynski
 Ted & Marilyn Redekop
 Dr. Martin Reed & Joy Cooper
 Joy Reimer

Shelley Rennie
 Marilyn Robbins
 Nicole Robidoux
 Linda Robinson
 Gail MacAulay & Kevin Rollason
 Richard Ross
 Pat & Michelle Rowan
 Michael T. Ruta
 Barbara A Ryan
 David & Tammie Sainsbury
 R. S. Cunha Dental Corp*
 Heather Sandilands*
 Terry Sargeant & Margaret Haney
 Carol Scurfield
 Greg Sexsmith & Joni Lavender
 Sexsmith*
 D. L. & C. Sexton
 Kumar Sharma & Angelina DiSanto
 Jim & Susan Shaw
 Dr. Elinor Simons
 Linda Simpson
 Meera & Sach Sinha
 Sandra & Cliff Skrabek
 Lynne Skromeda
 Earl Slimmon
 Muriel Smith
 Jon Sorokowski
 Jacqueline St. Hill
 E. Steeg
 Darlene Stepanik
 Kim Stephens
 Heidi Struck*
 Shirley & Tom Strutt
 Alec Surasky
 Anita Tait
 Shelley & Jeff Tallin
 Mala Teeluck*
 Karen Tereck
 Elaine Toms
 Marilyn Trepel
 Elaine Tresoor
 Eric Turner*
 Chris Turky & Bryce Weedmark*
 Robert Tyler & Laurel Hammond-Tyler
 United Way
 Jan Van Aertselaer
 Brent & Jocelyn VanKoughnet
 Nancy Vincent
 Judy Wakefield
 Jane & Don Walters*
 Paul & Laura Walton*
 Robert & Sherilyn Ward
 John & Marjorie Warkentin
 Peter & Joan Washchysyn
 Mary Agnes Welch*
 Alys-Lynne & Steve West*
 Norma & Ron Westcott
 Al & Pat Wherrett*
 Florence & Donald Whitmore
 Leslie Wilson
 James Wood*
 19 Anonymous

*Current Royal MTC Board of Trustees/Advisory Board members

*Current Royal MTC staff

*Monthly Donors/Drama Club



Proud supporter of the
Royal Manitoba Theatre Centre.

BellMTS

SUPPORTERS

SPONSORS

Air Canada
The Asper Family Foundation
The Gail Asper Family Foundation
The Asper Foundation
Bell MTS
Birchwood Lexus
BMO Financial Group
Bonaventure Travel Inc.
Canada Life
CIBC Imperial Markets
CPA Manitoba
Culligan Water
Dycom Direct Mail Services
Esdale Printing Co. Ltd.
Fairmont Winnipeg
Fillmore Riley LLP
Free Press
Friesens Corporation
GFL Environmental
HUB International
IG Wealth Management
JEM Insurance
Jones & Co Wine Merchants
Lawton Partners
Soirée Event Planning
Manitoba Bar Association
Liquor Mart
Manitoba Public Insurance
McDiarmid Flowers
McNally Robinson Booksellers
POS Systems
RBC Foundation
RE/MAX
Red River Co-operative Ltd.
Relish Branding
Richardson Foundation
Sleeman Breweries Ltd.
Stantec Consulting Ltd.
Tanchak Wealth Management Group
Taylor McCaffrey LLP
TD Bank Group
The Thomas Sill Foundation
Torque Brewing
University of Manitoba
WOW! Catering

CORPORATE DIRECTOR'S CIRCLE

\$25,000+

Johnston Group Inc.
Richardson Foundation

\$5,000-9,999

Cambrian Credit Union
Maxim Truck & Trailer - Doug
Harvey & Jan Shute

\$3,000-4,999

Maple Leaf Construction Ltd., Blake
Fitzpatrick

\$1,200-2,999

Arthur J. Gallagher Insurance and
Risk Management
B.A. Robinson Co Ltd.
Domo Gasoline Corporation Ltd. -
Kate M. Everett, President
IATSE Local 856
Manitoba's Credit Unions
MMP Architects
Pollard Banknote Limited
PRA Inc.
Qualico
Terracon Development Ltd.

CORPORATE COMPANY CIRCLE

\$600-1,199

Mid West Packaging Limited
Premier Printing Ltd.

\$300-599

MCW/AGE Consulting Professional
Engineers
Winnipeg Building & Decorating Ltd.

\$150-299

Patill/St. James Insurance

FOUNDERS' CIRCLE

Wayne & Lee Anderson
Gail Asper, OC, OM, LLD*
Zdzislaw (Zaz) Bajon & Patricia Hunter
Mariam Bernstein
Marjorie & Morley[§] Blankstein
Duane[§] & Pauline Braun
Doneta Brothie, CM* &
Harry Brothie
Ken[§] & Denise Brown
David & Lianne Carefoot
Len & Heather Cariou
Terri Cherniack & Steven Schipper,
CM, OM
Jennifer Cheslock & George Buri
David Christianson & Vera
Steinberger
David* & Barb Christie
Gerry* & Chris Couture
D. J. Cowan
Hugh B. Cowan
Kerry Dangerfield*
Laurie Lam & Larry Desrochers
Glen* & Joan Dyrda
Robert & Florence Eastwood
Don & Elsie Elias
Bill[§] & Gayle Fischer
Anthony* & Jennifer Fletcher
Jack Fraser
James Gibbs[§]
Sandy & Rheel Gousseau
Rita Gunn[§] & Gregory Mason
John* & Nicola Guttormson
Ahava Halpern & Frank Lavitt
Linda Hamilton & Grange Morrow
Gary Hannaford* & Cathy Rushton
Ted[§] & Gail Hechter
Elaine Heinicke[§]
Camilla Holland
Shawn Hughes & Bruno Koehn
June[§] & Bob Jackson Fund for the
Performing Arts
Maureen E. Jay
Andrew & Wendy Jensen
David & Diane Johnston
Dr. Leonard & Hope[§] Kahane
Janis Kaminsky
Jason Kasper
John Kearsey
Gordon & Anne Keatch[§]
Rob Kennedy & Claudette Leclerc
Serena Helen Kraayeveld
Leona J. MacDonald
Cheryl Johansson[§] & Michael
Mainman
Mark & Gloria Mancini
Virginia Martin[§]
Peggy Barker & Ron McKinnon[§]

*Current Royal MTC Board of Trustees/Advisory Board members *Current Royal MTC staff *Monthly Donors/Drama Club [§]Fondly Remembered
If you have remembered Royal MTC in your will, please let us know.

SUPPORTERS

Jim* & Penny McLandress
 Barb Melnychuk
 Bob & Pat Migliore
 Jeffrey Morton*
 Ken & Sharon Mould
 Dr. Liam Murphy[§]
 Robb & Heather Paterson
 Chris Pearce
 Scott Penner
 Gina & John* C. Petersmeyer
 Drs. Bill Pope & Elizabeth
 Tippet-Pope
 K. Heather Power & Harold Klause
 Margaret Redmond* & Greg Gillis
 Edward Fisher & Lyse Rémillard
 Joan D. Richardson
 Jean Riggall
 Michelle Rowan
 Michael T. Ruta
 Sharon Ryman
 Susan Skinner*
 Kevin Hines & Shelly Smith-Hines
 Bill & Laurie* Speers
 Deborah Spracklin
 Joan Stephens
 Joanne Tait
 Suzanne Ulyot
 Lionel & Lorraine Wiens
 Margaret[§] & Alfred Wikjord
 Richard L. Yaffe & John A. Statham[§]
 Brenda Zaporzan[§]
 2 Anonymous

TRIBUTE GIFTS

In honour of Kerry Dangerfield
 Susan & Ab Freig

In honour of Camilla Holland
 Katrina Dunn
 Pablo Felices-Luna
 John & Joy Loewen
 Suzie Martin
 Nicole Matiation
 Trudy Schroeder
 Debra Zoerb

In honour of Judith Kendle
 Elsie C. Douglas

In memory of Ron McKinnon
 Ruth Denham
 Ross Taylor
 Nicole Woodley

In memory of Izzy Shore
 Hy Kraitberg & Terri Slotnick
 Ann McLean

In honour of Eric Vicar on his 65th Birthday
 Susan & Ab Freig

ENDOWMENT - STEVEN SCHIPPER FUND

Many thanks to the generosity of our Endowment Fund donors who gave a gift or fulfilled a pledge payment between Aug 1, 2023 and Sep 20, 2024. Amounts listed are cumulative.

\$5,000,000+

Government of Canada/
 Gouvernement du Canada
 Canadian Heritage/Patrimoine
 canadien

\$250,000-499,999

Gail Asper, OC, OM, LLD* &
 Michael Paterson

\$100,000-249,999

Manitoba Theatre Centre Volunteer
 Corps of Ushers
 Henriette Ricou & Jure Manfreda

\$25,000-49,999

Susan Glass & Arni Thorsteinson
 J.K. May Investments Ltd.
 Ken & Sharon Mould
 Cameron & Carole Osler
 Terracon Development Ltd.

\$10,000-24,999

Susan & Keith Knox
 Garry Markham
 Norma Anne Padilla
 L. Blair Philpott & Tom Kynman

\$5,000-9,999

Margaret Caie
 Ron & Carol Chapman
 Gordon & Sherratt Moffatt
 Gina O'Connor & John C.
 Petersmeyer*
 Barbara Scheuneman
 Dr. Dorothy Y. Young
 2 Anonymous

\$2,500-4,999

Don & Cheryl Breakey
 Sheila & David Brodovsky
 Roberta Dyck
 Michael & Lynn Evans
 David & Ewenia Gnutel
 John & Margaret Graham

Carol Campbell & Andy Krentz
 Barbara Main
 Elaine Toms
 Beverley Vane & Bill Shepherd

\$1,000-2,499

Joan & Edward Alexander
 Ron & Joan Boyd
 Emily Burt
 Art & Donna Chow
 Agnes & John K. Collins
 Dorothy Davidson
 Jeremy & Maureen Gordon
 Teresa A. Hay
 Jordan Janisse & Teresa Cooper
 Lynne Jentsch
 Barbara Latocki
 Gerry Matte & Lydia Surasky-Matte
 Peggy Barker & Ron McKinnon
 Anthony & Joyce McWha
 Paul & Elaine Neelon
 Myron Pawlowsky & Susan Boulter
 Edna Poulter
 W. & N. Rennie
 Jim & Susan Shaw
 Howie & Sue Simpson
 Deborah Spracklin
 Anonymous

\$500-999

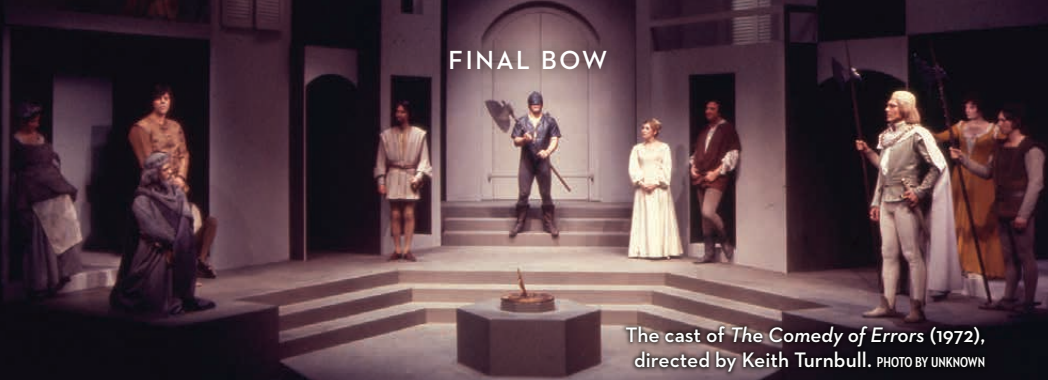
Marge & Ted Avent
 Helene Dyck
 Mr. & Mrs. Fred Kisil
 Dr. Shelley Mahoney
 Bob & Pat Migliore
 Ivor & Lorna Schledewitz
 Bryce & Jenna Simes
 Gabor Vamos & Brenda Silver

UP TO \$499

Ingrid Bolbecher
 Nancy Latocki
 F. Lemieux
 Jacqueline L. Melnyk
 Edward Fisher & Lyse Rémillard
 2 Anonymous

**MANY THANKS TO
 OUR VOLUNTEERS!**

*Current Royal MTC Board of Trustees/Advisory Board members *Current Royal MTC staff *Monthly Donors/Drama Club §Fondly Remembered
 If you have remembered Royal MTC in your will, please let us know.



The cast of *The Comedy of Errors* (1972), directed by Keith Turnbull. PHOTO BY UNKNOWN



Keith Turnbull 1944-2024

Royal MTC mourns the passing of former Artistic Director Keith Turnbull on June 2, 2024, at the age of 79.

Keith was born in Lindsay, Ontario and graduated from Western University with a Bachelor of Arts degree in 1965. It was there he met James Reaney, an English professor and a Governor General's Award-winning poet. James shared his passion for theatre with Keith, who helped him mount *The Sun and the Moon* as a student production.

This experience launched Keith as a director, and his talent was quickly recognized and led to apprenticeships under John Hirsch and Eddie Gilbert. At age 25 and after two years of staging experimental work at the Warehouse, he was appointed MTC's Artistic Director and served in the role during the 1970/71 season. He directed six plays on the Mainstage: *Long Day's Journey Into Night*, *Salvation*, *Little Murders*, *Alice Through the Looking Glass*, *The Sun and the Moon* and *The Comedy of Errors*.

After Keith's time at MTC, he moved east to serve as Artistic Director of Neptune Theatre's second stage in

Halifax. In 1975, Keith founded The NDWT Company (sometimes known as the Ne'er-Do-Well Thespians), which developed, produced and toured many new works nationally. He went on to spend four years teaching drama at the University of Calgary. He also began his long association with the Banff Centre, eventually serving as Artistic Director of its theatre arts division from 1993-1999. While at the Banff Centre, Keith started to shift his own creative focus to opera where he commissioned new works and directed a string of world premieres.

Keith had an incredible and international career as a stage director, producer, translator, dramaturge, educator and administrator, which spanned nearly six decades and numerous countries. Along the way, he influenced a vast array of artists as a mentor, a colleague and a friend. ●



The cast of *The Sun and the Moon* (1972), directed by Keith Turnbull. PHOTO BY GERRY KOPELOW

We believe that when people participate in their community, good things can happen.

Proud to support The Royal Manitoba Theatre Centre and the Pimootayowin Creators Circle.

As part of our goal to help people feel a sense of belonging in their communities, TD supports arts and culture events, initiatives, and organizations across North America that amplify diverse voices.

Learn more at
td.com/artsandculture

**TD READY
COMMITMENT**

* The TD logo and other TD trademarks are the property of The Toronto-Dominion Bank or its subsidiaries.



Let us celebrate you.

Join the Founders' Circle today and your planned gift will ensure that Royal MTC will be a home for artists and arts lovers for generations.

We look forward to recognizing and celebrating your generosity, foresight, and commitment to Royal MTC's future starting today.

IF YOU HAVE ANY QUESTIONS, WE WOULD LOVE TO HEAR FROM YOU!

Contact Brendan at 204 954 6412 or bmckeen@royalmtc.ca



ROYAL
MTC
MANITOBA THEATRE CENTRE



SUPPORTING PARTNERS

CORE FUNDERS



EXCLUSIVE PRODUCTION SUPPORTER



TOM HENDRY WAREHOUSE SEASON SPONSOR



OPENING NIGHT SPONSOR



JOHN HIRSCH MAINSTAGE PRODUCTION SPONSORS



TOM HENDRY WAREHOUSE PRODUCTION SPONSOR



JOHN HIRSCH MAINSTAGE PERFORMANCE SPONSORS



THEATRE FOR YOUNG AUDIENCES



NATIONAL MENTORSHIP PROGRAM



PIMOOTAYOWIN CREATORS CIRCLE



STUDENT TICKET SPONSOR



REGIONAL TOUR



UNDERSTUDIES



WINNIPEG 150 CELEBRATION PARTNER



SUPPORTING PARTNERS

2025 BLACK & WHITE BALL

SILVER SPONSORS



ENTERTAINMENT SPONSOR



WESTGATE ENTERPRISES

COCKTAIL RECEPTION SPONSOR



FILLMORE RILEY VACATION RAFFLE SPONSORS



CATERING SPONSOR



WINE SPONSOR



2024 LAWYERS PLAY



CAPITAL ASSISTANCE



DESIGN SPONSOR



SEASON MEDIA SPONSOR



SUPPORTING SPONSORS



2024 WINNIPEG FRINGE THEATRE FESTIVAL



BOARD OF TRUSTEES

HONORARY MEMBERS

Her Honour, Lt. Governor Anita R. Neville
The Honourable Wab Kinew, Premier of Manitoba
His Worship, Mayor Scott Gillingham

EXECUTIVE OFFICERS

John Guttormson, Co-Chair
Laurie Speers, Co-Chair
Jocelyne Prefontaine, Secretary
David Kroft, Governance & Strategic Planning Committee Chair
Nalini Reddy, Inclusion, Diversity, Equity and Access Committee Chair
Loren Remillard, Nominating Committee Chair
Geeta Tucker, Treasurer & Organizational Performance Committee Chair
Claire Workman, Resource Development Committee Chair

TRUSTEES

Emily Burt	David Lalama
Blair Doell	Katrina Lee-Kwen
Brad Favel	Linda McGarva-Cohen
Katherine Fox	Sudhir Sandhu
Susan Freig	Nicole Zajac

ADVISORY COUNCIL

John Guttormson, Chair	Colin R. MacArthur, KC
Gail Asper	Patrick J. Matthews
Doneta Brothie, CM	Jim McLandress
Angus Campbell	Jeffrey Morton, FCA
David Christie	Hon. Jack Murta
Gerry Couture	Lillian Neaman
Kerry Dangerfield	John Petersmeyer
Hy Dashevsky	Lawrence Prout
Glen Dyrda, FCA	Jeff Quinton
Anthony C. Fletcher	Patricia Rabson
Jean Giguere	Margaret Redmond
Charron Hamilton	Susan Skinner
Gary Hannaford, FCA	Al Snyder
Yude Henteleff	Maureen Watchorn
Ken Houssin	

WINNIPEG FRINGE THEATRE FESTIVAL ADVISORY COUNCIL

Katherine Fox, Chair	Hope McIntyre
Kerry Dangerfield	Brad Regehr
Dr. Linda Hamilton	

STAFF

ACCOUNTING/FINANCE

Misty Bromley, CPA, CGA, Director of Finance
Christina Smith, Accountant

ADMINISTRATION

Kurt Brown, HR Generalist
Evan Klassen, Executive Director
Kathrin Moncaster, IT Manager

ARTISTIC

Melissa Langdon, Artistic Associate
Isabelle Ly, Producer
Ian Ross, Program Director, Pimootayowin Creators Circle
Kelly Thornton, Artistic Director
Leslie Watson, Company Manager

BOX OFFICE

Colleen Hrabí, Director of Patron Services
Meaghan Fletcher, Box Office Manager
Box Office Representatives: Sharon Bunn, Jane Hunter,
Alora Kempthorne, Shayla Meeroff, Daniel Mitchell, Sean Piche,
Christina Reuther, Carolin Schroeder, Emang Tiale, Tatiana Tuazon,
Katie Welham

CARPENTRY (JOHN HIRSCH MAINSTAGE)

Louis Gagné, Layout Carpenter[§]
Chris Hadley, Layout Carpenter
Brent Letain, Master Carpenter
Chris Seida, Scenic Carpenter

DEVELOPMENT

Kristine Betker, Interim Director of Development
Patrick Hanan, Development Database Specialist
Brendan McKeen, Individual Giving Manager
Stephanie Porrior, Event Coordinator

FRONT OF HOUSE

Janice Marple, Volunteer Manager
Cole Reuther, Front of House Manager
Trish Cooper, Assistant Front of House Manager
Alanna McPherson, Assistant Front of House Manager
Front of House Staff: Rachel Baziuk, Renelle Chartier,
Meagan Chrest, Rylen De Vries, Chael Donald, Cassidy Groening,
Darrah Horobetz, Joanna Houston, Christine Leslie, Kimmy Martin,
Ross McMillan, Lauren Minaker, Christina Reid, Eve Ross Moore,
Odeah Roy, Kyra Lyle, Cobi Winston

MAINTENANCE

Chris Fletcher, Building Manager
Wayne Santos, Assistant Building Manager

MARKETING & COMMUNICATIONS

Rachelle Blatta, Communications & Social Media Manager
Ksenia Broda-Milian, Education and Enrichment Manager
Sue Caughlin, Marketing & Communications Manager
Desiree La Vallee, Ticketing Application Specialist
Savannah Lillies, Marketing & Communications Coordinator
Jocelyn Unrau, Director of Marketing & Communications

PAINT

Shauna Jones, Assistant Scenic Artist
Carla Schroeder, Head Scenic Artist

PRODUCTION

Christine Corthey, Production Associate
Ian Kirk, Production Driver
Allison Loat, Director of Production
Donnie Osler, Technical Director
Alex Sinclair, Assistant Production Manager
Steven Vande Vyvere, Assistant Technical Director

PROPERTIES

Khaeler Bautista, Props Builder
Zoë Leclerc-Kennedy, Assistant Head of Props
Jamie Plummer, Head of Props

STAGE CREW

Kayla McSwain, Head of Wardrobe (Stage)
Gary Plouffe, House Stage Hand[§]
Claude Robert, Head Electrician
Jessica Rose, Head of Audio
Liam Shattuck, Head Stage Hand
Chris Thomson, Head Carpenter

TOM HENDRY WAREHOUSE

Tim Clark, Head of Sound
Ryan Spracklin, Master Carpenter
Fisher Wohlgemut, Head Electrician

WARDROBE

Thora Lamont, Lead Cutter
Martha Schram, Wardrobe 1st Hand
Heather Thorleifson, Associate Head of Wardrobe
Jackie Van Winkle, Head of Wardrobe

WIGS

Beverley Covert, Head of Wigs/Make-Up

WINNIPEG FRINGE THEATRE FESTIVAL

Chuck McEwen, Executive Producer
Tori Popp, Festival Manager

HONORARY STAFF

Zaz Bajon, General Manager Emeritus
Steven Schipper, CM, OM, Artistic Director Emeritus

[§]Fondly Remembered

BEHIND THE SCENES

ADDITIONAL PRODUCTION STAFF

THE PLAY THAT GOES WRONG

Linda Beech, Assistant Scenic Artist

IATSE Local 63 crew:

Calin Braun
Tim Clark
Antony Condello
Blaine Delf
Kyle Elston-Ellis
Jeff Herd
James Jansen
Jennie Lester
Steven Puttaert
Anjum Shaqi
Craig Strong
Blair Waterman

THE RECIPE

Linda Beech, Props Builder
Robbie Playter, Carpenter
Additional staff provided by IATSE Local 63

THE PLAY THAT GOES WRONG

CITADEL THEATRE PRODUCTION STAFF

Michael Erwin, Director of Production
Patrick Fraser, Technical Director
Marc Anderson, Head Stage Carpenter
Peter Locock, Head of Scenic Carpentry
Jeff Howe, Assistant Head of Scenic Carpentry
Jeff Burwash, Scenic Carpenter
Garret Derede, Scenic Carpenter
Chris Hayes, Scenic Carpenter
Brendan Nearey, Scenic Carpenter
Jaclyn Segal, Scenic Carpenter
Andree Simard, Head of Scenic Paint
Megan Paliwoda, Assistant Head of Scenic Paint
Sarah Karpyschin, Head of Props
Angie Sotiropoulos, Assistant Head of Props
Connor Macdonald, Props Builder
Brendan Nearey, Props Builder
Patsy Thomas, Head of Wardrobe
Deanna Finnman, Interim Head of Wardrobe
Katie Klingvall, Head of Wardrobe (Theatre Calgary)
Juli Elkiw, Assistant Head of Wardrobe (Theatre Calgary)
Emily Woodman, Cutter
Kaeleah Spallin, Cutter
Barb Becker, Fabricator
Cathleen Sbrizzi, First Hand
Tammy Barry, Stitcher
Hongning Ke, Stitcher
Sasha Mandaione, Stitcher
Kelsey Mccammon, Stitcher
Adejoke Taiwo, Stitcher
Katie Patton, Head of Wigs
Stephanie Ryder, Assistant Head of Wigs

CITADEL THEATRE ADMINISTRATION STAFF

Daryl Cloran, Artistic Director
Jessie van Rijn, Executive Director

THEATRE CALGARY ADMINISTRATION STAFF

Stafford Arima, Artistic Director
Maya Choldin, Executive Director

THE RECIPE

THEATRE PROJECTS MANITOBA ADMINISTRATION STAFF

Suzie Martin, Artistic Director
Sam McLean, Managing Director
Key Caguioa, Associate Producer
Christine Leslie, Programming & Communications Coordinator
Ian Hodges, Bookkeeper

Meet the 2024/25 Season Ensemble!



Scan the QR Code or visit royalmtc.ca/Artists/SeasonEnsemble to meet our 2024/25 Season Ensemble! We celebrate the actors, directors, choreographers, music directors, designers, stage managers, assistants and apprentices whose work will grace our stage this season. We welcome many familiar faces and applaud those making their MTC debut. Over 140 artists will come together to engage with theatre lovers in the collective act of storytelling.



Urinetown – It was a Royal Flush!

The 2024 cast certainly stuck it to “the man” during our 31st Lawyers Play *Urinetown, The Musical*! Bringing their extraordinary skills to the Tom Hendry Warehouse, the exceptional cast wowed audiences during the May 7-11 run. Between rousing song and dance numbers and laugh-out-loud comedy, this thoughtful satire brought audiences to their feet.

Cast entirely with Manitoba Bar Association members, the Lawyers Play is one of Royal MTC’s largest fundraisers. Since its inception, this gala event has raised over \$1.1 million to support MTC and the Winnipeg Fringe Theatre Festival.

Our deepest gratitude to patrons, donors, advertisers and sponsors for supporting our efforts. We’d also like to extend sincere thanks to the talented cast and hardworking crew, as well as our many volunteers and committee members. ●

CAST

Andrea Bellhouse	Caleigh Glawson	Melanie LaBossiere	Hayley Main	Sandi Phillips
Jennifer Bird	Benji Greenberg	Jordan Lang	Jennifer Malabar	Jodi Plenert
Paul Cooper	Kate Henley	Joel Lebois	Jeff Palamar	Steve Scarfone
Tashia Dreger	Deanna Hiebert	Jerritt Lipski	Victoria Perrie	Reed Sitarik
Sean Gallop				

Director Erin McGrath*, Music Director: Renate Rossol*, Choreographer: Rebekah Jones

SILVER SPONSOR

Lawton Partners

PERFORMANCE SPONSOR

University of Manitoba -
Faculty of Law

RECEPTION SPONSOR

Lawyers Financial

CATERING SPONSOR

Fairmont Winnipeg
WOW! Catering

WINE SPONSOR

Jones & Company Wine
Merchants

DESIGN SPONSOR

Relish Branding

SUPPORTERS

Blüfish Japanese
Restaurant
Corrientes Argentine
Pizzeria

COMMITTEE

Jeff Palamar - Chair
Kathrine Basarab
Michelle Falk
Caleigh Glawson

Melissa Hazelton
Jamie Jurczak
Peter Kingsley
David Kroft
Joel Lebois
Jim McLandress
Stacey Soldier
Stéphanie Tétreault

*The participation of this Artist was arranged by permission of Canadian Actors' Equity Association under the provisions of the Dance • Opera • Theatre Policy (DOT).



Empowering
creative
young minds

Proudly supporting
Royal Manitoba Theatre Centre

Canada Life and design are trademarks
of The Canada Life Assurance Company.

canada  TM

Great theatre lives here.



BMO



We are pleased to support the **Royal Manitoba Theatre Centre** and the artists who have been captivating audiences with exciting, innovative, and entertaining productions.

BMO is proud to be the 2024/25 **Tom Hendry Warehouse** Season Sponsor.

Photo Credits: Jerry Grajewski