

OVATION

ROYAL
MTC
MANITOBA THEATRE CENTRE

VOL 31 • NO 3
JAN/FEB 2024

BEAUTIFUL

The Carole King Musical

Book by
Douglas McGrath

Words & Music by
Gerry Goffin | Barry Mann &
& Carole King | Cynthia Weil

Music by Arrangement with
Sony/ATV Music Publishing

Orchestrations, Vocal and Incidental
Music Arrangements by Steve Sidwell



JOHN
HIRSCH
MAINSTAGE

among men

By David Yee

TOM HENDRY WAREHOUSE
SEASON SPONSOR



TOM
HENDRY
WAREHOUSE



Embrace Your
**INNER
ARTIST**



JAMES RICHARDSON & SONS, LIMITED

ESTABLISHED 1857

AND AFFILIATED COMPANIES

Proudly supporting and celebrating arts, culture and creativity in our community.

MESSAGE FROM THE ARTISTIC DIRECTOR



Welcome to the theatre. We're thrilled to bring these powerful plays to the stage.

As the director of *Beautiful*, the story resonates deeply. I was born in the '60s, the youngest of four children to a mother who, like many women of that era, gave up her career to be a homemaker. I vividly remember my older sister, with her collection of 45s with the latest hit singles. But the first full album I held was Carole King's 'Tapestry'. I was obsessed by its imagery: the window seat she sat in with the cat at her feet; the tapestry she wove during recording sessions, spread across the inside cover, and the music itself - deep, penetrating and soulful. It's no surprise this album went on to be one of the top-selling albums of all time.

What is less known is who King was before she skyrocketed to superstardom. In fact, she was behind so many of the hit singles we consumed on the 45s.

Beautiful celebrates an era of music where songwriters were generating hits for popular solo artists and R&B bands in the late '50s and '60s, where teenagers defied their parents to embrace the birth of rock 'n roll. It was an era where the socio-political backdrop mirrored the musical revolution and spurred on the cultural shift that saw the civil rights movement, and women's liberation. And Carole King lived through it all. From teeny bopper hits to 'Tapestry' this story charts a young girl born into the cultural norms set out for women, who truly found her voice and became a 'natural woman' for us all.

Similarly, in *among men*, we are invited into the remarkable journey of two yet-to-be-famous poets, struggling to break through. Artists are driven to make meaning of their world and this powerful portrait of Al Purdy and Milton Acorn, and likewise Carole King, is a testament to the beauty of an artistic soul in pursuit of meaning.

Thank you so much for joining us. Enjoy the show.

A handwritten signature in black ink that reads 'Kelly'.

Royal Manitoba Theatre Centre is proud to call Manitoba home. Royal MTC is located in Winnipeg on Treaty 1, the traditional territory of the Anishinaabeg, Cree, Oji-Cree and Dakota people, and the National Homeland of the Red River Métis. We are thankful for the benefits sharing this land has afforded us, acknowledge the responsibilities of the Treaties, and embrace the opportunity to partner with Indigenous communities in the spirit of reconciliation and collaboration.

THEATRE ABBREVIATION LEGEND

A.C.T. American Conservatory Theater • San Francisco, CA	Rainbow Rainbow Stage • Winnipeg, MB
Arts Club Arts Club Theatre Company • Vancouver, BC	RNT Royal National Theatre • London, England
ATF Atlantic Theatre Festival • Wolfville, NS	Royal Alex The Royal Alexandra Theatre • Toronto, ON
ATP Alberta Theatre Projects • Calgary, AB	RSC Royal Shakespeare Company • Stratford-upon-Avon, England
BAM Brooklyn Academy of Music • NYC	RWB Royal Winnipeg Ballet • Winnipeg, MB
Bard on the Beach Bard on the Beach Shakespeare Festival • Vancouver, BC	Sarasvati Sarasvati Productions • Winnipeg, MB
Belfry The Belfry Theatre • Victoria, BC	Segal The Segal Centre for Performing Arts • Montreal, QC
Blyth Blyth Theatre Festival • Blyth, ON	Shaw Shaw Festival • Niagara-on-the-Lake, ON
Broadway Theatre district • New York, NY	SIR Shakespeare in the Ruins • Winnipeg, MB
CBC Canadian Broadcasting Corporation	Soulpepper Soulpepper Theatre Company • Toronto, ON
Centaur Centaur Theatre Company • Montreal, QC	Stratford Stratford Festival • Stratford, ON
Citadel The Citadel Theatre • Edmonton, AB	SummerWorks SummerWorks Theatre Festival • Toronto, ON
COC Canadian Opera Company • Toronto, ON	TA Theatre Aquarius • Hamilton, ON
CS Canadian Stage • Toronto, ON	Tarragon Tarragon Theatre • Toronto, ON
Dora Dora Mavor Moore Award • Toronto, ON	TBTR Theatre by the River • Winnipeg, MB
Drayton Drayton Entertainment • Ontario	TC Theatre Calgary • Calgary, AB
Dry Cold Dry Cold Productions • Winnipeg, MB	TIFT Talk is Free Theatre • Barrie, ON
Factory Factory Theatre • Toronto, ON	TNB Theatre New Brunswick • Fredericton, NB
GCTC The Great Canadian Theatre Company • Ottawa, ON	Toronto Free Toronto Free Theatre • Toronto, ON
Grand The Grand Theatre • London, ON	TPM Theatre Projects Manitoba • Winnipeg, MB
HGJT Harold Green Jewish Theatre Company • Toronto, ON	TSO Toronto Symphony Orchestra
Mirvish Mirvish Productions • Toronto, ON	U of M University of Manitoba
Moving Target Moving Target Theatre Company • Winnipeg, MB	U of T University of Toronto
MTYP Manitoba Theatre for Young People • Winnipeg, MB	U of W University of Winnipeg
NAC National Arts Centre • Ottawa, ON	ViC The Village Conservatory for Music Theatre • Winnipeg, MB
Necessary Angel Necessary Angel Theatre Company • Toronto, ON	VP Vancouver Playhouse Theatre Company • Vancouver, BC
Neptune Neptune Theatre • Halifax, NS	West End Theatre district • London, England
NFB National Film Board of Canada	WCT Western Canada Theatre • Kamloops, BC
NTS National Theatre School of Canada • Montreal, QC	WJT Winnipeg Jewish Theatre
Persephone Persephone Theatre • Saskatoon, SK	WSO Winnipeg Symphony Orchestra
PTAM Popular Theatre Alliance of Manitoba • Winnipeg, MB	WST Winnipeg Studio Theatre
PTE Prairie Theatre Exchange • Winnipeg, MB	YPT Young People's Theatre • Toronto, ON
	zone41 zone41 theatre • Winnipeg, MB

OVATION

VOLUME 31, NUMBER 3
JANUARY/FEBRUARY 2024

Ovation is published six times per theatre season and has an approximate yearly circulation of 85,000.

PRINTING: Premier Printing Ltd.

ADVERTISING INQUIRIES

Savannah Lillies

TELEPHONE: 204 934 0309

EMAIL: slillies@royalmtc.ca

ROYAL MTC MANITOBA THEATRE CENTRE

Royal Manitoba Theatre Centre
174 Market Avenue
Winnipeg, MB R3B 0P8
Canada

RoyalMTC.ca

BOX OFFICE: 204 942 6537

ADMINISTRATION: 204 956 1340

FAX: 204 947 3741

Royal MTC is a member of the Professional Association of Canadian Theatres and engages, under the terms of the Canadian Theatre Agreement, professional artists who are members of the Canadian Actors' Equity Association.

Scenery, Carpentry and Show Running Crew at the John Hirsch Mainstage and the Tom Hendry Warehouse are members of IATSE Local 63.

USHERS • Royal MTC's loyal volunteer ushers are available at every performance to assist patrons.

LATECOMERS • Latecomers will be seated at the discretion of the House Manager.

COURTESY TO OTHERS • Talking, candy wrappers and coughing are distracting to fellow patrons and actors. We ask each patron to please keep noise to a minimum during a performance. Thank you for your cooperation.

SCENTS AND ALLERGIES • A number of Royal MTC patrons have expressed concerns regarding medical reactions caused by scented products, so much so that they can't enjoy the show. Please consider others before using items such as colognes, perfumes and hairspray. Your thoughtfulness is appreciated.

HEARING ENHANCEMENT • Sennheiser Infrared Listening Devices are available free of charge in the lobby at the John Hirsch Mainstage and Tom Hendry Warehouse, supplied by the Royal MTC Volunteer Corps of Ushers Capital Campaign donation. Please see the House Manager for details.

PROHIBITED • The use of cameras and recording devices is strictly prohibited. Mobile devices must be turned off. To be contacted in an emergency, leave your name and seat number with the House Manager.

WARNINGS • On occasion, Royal MTC's productions may contain script-specific smoking of non-tobacco products, special effects and language/content warnings. For more information on specific productions, please visit royalmtc.ca.

THE ROYAL MANITOBA THEATRE CENTRE
AND MANITOBA LIQUOR & LOTTERIES PRESENT

MIX TAPES FROM MY MOM

Written and performed by Cory Wojcik

Featuring a live band



FEB 12 MacGregor, MB
FEB 13 Gimli, MB
FEB 16 Thompson, MB
FEB 17 Snow Lake, MB
FEB 18 Flin Flon, MB
FEB 20 Dauphin, MB
FEB 22 Souris, MB

FEB 23 Minnedosa, MB
FEB 24 Pinawa, MB
FEB 25 Strathclair, MB
FEB 26 Brandon, MB
FEB 27 Deloraine, MB
MAR 1 Crystal City, MB
MAR 2 Portage la Prairie, MB

MAR 4 Red Lake, ON
MAR 5 Sioux Lookout, ON
MAR 6 Dryden, ON
MAR 8 Atikokan, ON
MAR 10 Kenora, ON
MAR 11 Steinbach, MB
MAR 12 Carman, MB

ROYAL
MTC
MANITOBA THEATRE CENTRE

REGIONAL
TOUR

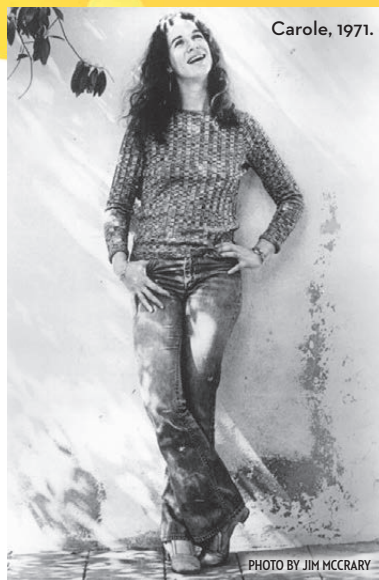
PRESENTING SPONSOR

**PLAY
NOW**

FOR MORE INFORMATION, VISIT
RoyalMTC.ca

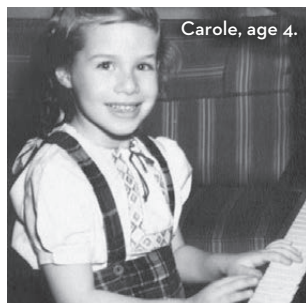
Carole King: Life and Career

Carole King was born on February 9, 1942, in New York City. She is known as a singer-songwriter and initially gained popularity writing songs with her husband at the time, Gerry Goffin. Carole's career alongside Gerry grew in the Brill Building music scene and her solo career flourished in the 1970s before she took a long break for environmental activism throughout the '80s and '90s. Carole returned to the stage in 2007 to tour alongside James Taylor. She has been inducted into the Rock & Roll Hall of Fame twice so far, first as a songwriter in 1990 and later as a performer in 2021.



Early Years

Carole's mother provides her with early music education. While in high school, Carole starts arranging and composing music.



1960

Carole and Gerry release their first number one hit, "Will You Love Me Tomorrow?", performed by The Shirelles.

1960s

Carole and Gerry write songs for Aldon Music. They become a successful songwriting duo, with hits like "Take Good Care of My Baby", "Up on the Roof" and "The Locomotion."



1967

"A Natural Woman", written by Carole and Gerry and performed by Aretha Franklin, is released to great success.

1970

Carole collaborates with James Taylor on his album Sweet Baby James. Her debut solo album, *Writer*, is released.

1971

Carole's breakthrough as a solo artist comes with her album *Tapestry*, featuring hits like "You've Got a Friend", "It's Too Late", "I Feel the Earth Move" and "So Far Away".

BEAUTIFUL: THE CAROLE KING MUSICAL



Carole recording Tapestry.



Lou Adler and Carole King.

PHOTO BY JIM MCCRARY



Carole, 1983. PHOTO BY JIM SHEA

1970s

Carole continues to release successful albums including *Music* (1971), *Rhymes & Reasons* (1972), *Fantasy* (1973) and *Wrap Around Joy* (1974).

1980s TO 1990s

Carole's musical career takes a back seat as she becomes involved in environmental causes.

1990

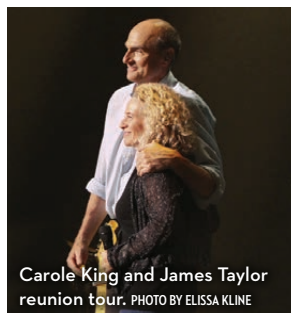
Carole and Gerry are inducted into the Rock & Roll Hall of Fame.



Carole King and Gerry Goffin at their Rock & Roll Hall of Fame induction ceremony.

2007 TO 2010

Carole reunites with James Taylor for a 50-year reunion of their first show at *The Troubadour* in West Hollywood. They decide to turn this reunion into a tour in 2010 and produce a live album and documentary alongside the tour.



Carole King and James Taylor reunion tour. PHOTO BY ELISSA KLINE

2012

Carole's memoir *A Natural Woman: A Memoir* is published, and she announces her retirement from music.

2013

Carole receives the Library of Congress Gershwin Prize for Popular Song and a Grammy Award for lifetime achievement.

2014

Beautiful: The Carole King Musical runs on Broadway and in London's West End.



Barry Mann, Carole King and Cynthia Weil at *Beautiful* opening night in West End London. PHOTO BY ELISSA KLINE

2016

Carole performs all the songs from her album *Tapestry* in London's Hyde Park. The recordings from this show created the album *Tapestry: Live at Hyde Park*.

2021

Carole is inducted into the Rock & Roll Hall of Fame as a performer. ●

Provided by The Segal Centre

PRESENTS

A CO-PRODUCTION WITH THE SEGAL CENTRE

Beautiful: The Carole King Musical

Book by
Douglas McGrath

Words & Music by
Gerry Goffin & Carole King Barry Mann & Cynthia Weil

Music by Arrangement with
Sony/ATV Music Publishing

Orchestrations, Vocal and Incidental Music Arrangements by
Steve Sidwell

Originally produced on Broadway by
Paul Blake Sony/ATV Music Publishing Mike Bosner

January 11 – February 3, 2024

PREVIEWS January 9 & 10

Director Kelly Thornton
Music Director Floyd Ricketts
Choreographer Jaz Sealey
Set Designer Gillian Gallow**
Costume Designer Louise Bourret
Lighting Designer Hugh Conacher**
Sound Designer Sylvin Sévigny
Intimacy Directors Lisa Rubin & Sharon Bajer†
Assistant Director Justin Stadnyk†
Stage Manager Melanie St-Jacques
Assistant Stage Manager Zahra Larche
Assistant Stage Manager Tori Popp†
Apprentice Stage Manager Kyra Krassnigg

Beautiful: The Carole King Musical is performed with one intermission.

BEAUTIFUL is presented through special arrangement with Music Theatre International (MTI).
All authorized performance materials are also supplied by MTI.
www.mtishows.com

Any video and/or audio recording of this production is strictly prohibited.

Production photography by Emelia Hellman.

**Indicated designers on this production are represented by the Associated Designers of Canada, IATSE Local ADC659.

†Position funded through the Jean Murray - Moray Sinclair Theatre Apprenticeship Program

†Past Jean Murray - Moray Sinclair apprenticeship or scholarship recipient

Beautiful: The Carole King Musical

Tess Bengier as Carole King

Uptown Singer / Shirelle (Beverly) / Ensemble Ruth Acheampong
Lead Drifter / Ensemble Andre Anthony
Janelle Woods / Shirelle (Micky) / Ensemble Lisa Bell
Shirelle (Shirley) / Ensemble Louise Camilleri
Drifter 4 / Ensemble Jeremy Carver-James
Genie Klein Ellen David
Nick / Righteous Brother / Bobby Vee / Ensemble Matthew Fletcher†
Gerry Goffin Darren Martens
Barry Mann Mike Melino
Drifter 2 / Ensemble Davis Okey-Azunnah
Cynthia Weil Laura Olafson
Diamond / Righteous Brother / Lou Adler / Ensemble Jonathan Patterson
Little Eva / Lucille / Shirelle (Doris) / Ensemble Alana Randall
Betty / Marilyn Wald Rhea Rodych-Rasidescu†
Drifter 3 / Ensemble Dakota Jamal Wellman
Neil Sedaka / BeeBop Guy / Ensemble Chase Winnicky†
Donny Kirshner Cory Wojcik

UNDERSTUDIES

Understudies never substitute for listed performers unless a specific announcement is made at the time of their appearance.

Cynthia Weil, Genie Klein, Betty / Marilyn Wald Jillian Willems
Little Eva / Lucille / Shirelle (Doris) Ruth Acheampong
Drifter 2 Vocals, Student, Keys / Guitar Player Andre Anthony
Shirelle (Shirley) Lisa Bell
Uptown Singer / Shirelle (Beverly) Louise Camilleri
Drifter 2 & 3 Vocals, Pianist Jeremy Carver-James
Gerry Goffin, Neil Sedaka / BeeBop Guy Matthew Fletcher†
Lead Drifter Vocals / Stage Manager, Drifter 4 Vocals / Pianist Davis Okey-Azunnah
Donny Kirshner Jonathan Patterson
Janelle Woods / Shirelle (Micky) Alana Randall
Carole King Rhea Rodych-Rasidescu†
Drifter 4 Vocals / Engineer, Boom Operator, Camera Man Dakota Jamal Wellman
Barry Mann, Nick / Righteous Brother / Bobby Vee, Diamond / Righteous Brother / Lou Adler Chase Winnicky†

*Position funded through the Jean Murray - Moray Sinclair Theatre Apprenticeship Program

†Past Jean Murray - Moray Sinclair apprenticeship or scholarship recipient

Beautiful: The Carole King Musical

MUSICAL NUMBERS

ACT I

Overture

<i>So Far Away</i>	Carole King
<i>Oh Carol</i>	Neil Sedaka
<i>1650 Broadway Medley</i>	Ensemble
<i>It Might as Well Rain Until September</i>	Carole King
<i>Be Bop a Lula</i>	Ensemble
<i>Some Kind of Wonderful</i>	Carole King, Gerry Goffin & The Drifters
<i>Happy Days Are Here Again</i>	Cynthia Weil
<i>Take Good Care of My Baby</i>	Gerry Goffin & Carole King
<i>Who Put the Bomp</i>	Barry Mann
<i>Will You Still Love Me Tomorrow?</i>	Carole King
<i>He's Sure the Boy I Love</i>	Cynthia Weil & Barry Mann
<i>Will You Still Love Me Tomorrow?</i>	The Shirelles
<i>Up on the Roof</i>	Gerry Goffin & The Drifters
<i>On Broadway</i>	The Drifters
<i>The Locomotion</i>	Little Eva & Ensemble
<i>You've Lost That Lovin' Feelin'</i>	Barry Mann & The Righteous Brothers
<i>One Fine Day</i>	Janelle, Backup Singers & Carole King

ACT II

Where You Lead / Entr'acte

<i>Chains</i>	Carole King & Ensemble
<i>Walking in the Rain</i>	Barry Mann & Cynthia Weil
<i>Pleasant Valley Sunday</i>	Marilyn Wald, Gerry Goffin & Ensemble
<i>We Gotta Get Out of This Place</i>	Barry Mann
<i>Will You Still Love Me Tomorrow? (Reprise)</i>	Carole King
<i>Uptown</i>	"Uptown" Singer & Ensemble
<i>It's Too Late</i>	Carole King & Ensemble
<i>You've Got a Friend</i>	Carole King, Barry Mann, Cynthia Weil & Don Kirshner
<i>(You Make Me Feel Like) A Natural Woman</i>	Carole King & Ensemble
<i>Beautiful</i>	Carole King & Company
<i>I Feel the Earth Move</i>	Carole King & Company

UNDERSTUDIES FUNDED BY



Understudies are funded by the Government of Canada under the Community Services Recovery Fund.
Understudies sont financés par le gouvernement du Canada sous le Fonds de relance des services communautaires.

Beautiful: The Carole King Musical

MUSICIANS

Music Director / Keyboard 1.....	Floyd Ricketts
Keyboard 2	Andrew St. Hilaire
Keyboard 3.....	Rachel Cameron
Drums	Brendan Thompson
Bass - Acoustic, Electric	Julian Bradford
Guitar - Electric, Acoustic, Nylon, Steel Strings	Larry Roy
Reed - Alto Sax, Tenor Sax, Flute.....	Janice Finlay
Trumpet	Shane Hicks
Contractor.....	Dave Lawton

"Be Bop a Lula" by Tex Davis and Gene Vincent. Sony/ATV Songs LLC (BMI) and Three Wise Boys Music LLC (BMI); **"Beautiful"** by Carole King. Colgems-EMI Music Inc. (ASCAP); **"Chains"** by Gerry Goffin and Carole King. Screen Gems-EMI Music (BMI); **"Happy Days Are Here Again"** by Milton Ager and Jack Yellen. EMI Robbins Catalog Inc. (ASCAP). Special lyrics by Douglas McGrath and Cynthia Weil; **"He's Sure the Boy I Love"** by Barry Mann and Cynthia Weil. Screen Gems-EMI Music Inc. (BMI); **"I Go Ape"** by Neil Sedaka and Howard Greenfield. Screen Gems-EMI Music Inc. (BMI) and Universal/BMG (BMI); **"It Might As Well Rain Until September"** by Gerry Goffin and Carole King. Screen Gems-EMI Music Inc. (BMI); **"It's Too Late"** by Carole King and Toni Stern Colgems-EMI Music Inc. (ASCAP); **"Little Darlin'"** by Maurice Williams. Cherie Corporation (BMI) 100%; **"The Locomotion"** by Gerry Goffin and Carole King. Screen Gems-EMI Music Inc. (BMI); **"Love Potion #9"** by Jerry Leiber and Mike Stoller. Sony/ATV Tunes LLC (ASCAP); **"Oh Carol"** by Neil Sedaka and Howard Greenfield. Screen Gems-EMI Music Inc. (BMI) and Universal/BMG (BMI); **"On Broadway"** by Barry Mann, Cynthia Weil, Jerry Leiber and Mike Stoller. Screen Gems-EMI Music Inc. (BMI); **"One Fine Day"** by Gerry Goffin and Carole King. Screen Gems-EMI Music Inc. (BMI); **"Pleasant Valley Sunday"** by Gerry Goffin and Carole King. Screen Gems-EMI Music Inc. (BMI); **"Poison Ivy"** by Jerry Leiber and Mike Stoller. Sony/ATV Tunes LLC (ASCAP); **"So Far Away"** by Carole King. Colgems-EMI Music Inc. (ASCAP); **"Some Kind of Wonderful"** by Gerry Goffin and Carole King. Screen Gems-EMI Music Inc. (BMI); **"Spish Splash"** by Bobby Darin and Jean Murray. EMI Unart Catalog Inc. (BMI), Trio Music Co. Inc. (BMI) and Alley Music Corp. (BMI); **"Stupid Cupid"** by Neil Sedaka and Howard Greenfield. Screen Gems-EMI Music Inc. (BMI) and EMI Longitude Music (BMI); **"Take Good Care of My Baby"** by Gerry Goffin and Carole King. Screen Gems-EMI Music Inc. (BMI); **"There Goes My Baby"** by Jerry Leiber, Mike Stoller, Ben King, George Treadwell and Lover Patterson. Sony/ATV Songs LLC (BMI); **"Up on the Roof"** by Gerry Goffin and Carole King. Screen Gems-EMI Music Inc. (BMI); **"Walking in The Rain"** by Barry Mann, Cynthia Weil and Phil Spector. Screen Gems-EMI Music Inc. (BMI). EMI Blackwood Music Inc. obo Mother Bertha Music (BMI); **"We Gotta Get Out of This Place"** by Barry Mann and Cynthia Weil. Screen Gems-EMI Music Inc. (BMI); **"Who Put the Bomp"** by Barry Mann and Gerry Goffin. Screen Gems-EMI Music Inc. (BMI); **"Will You Love Me Tomorrow"** by Gerry Goffin and Carole King. Screen Gems-EMI Music Inc. (BMI); **"Yakkety Yak"** by Jerry Leiber and Mike Stoller. Sony/ATV Tunes LLC (ASCAP); **"(You Make Me Feel Like a) Natural Woman"** by Gerry Goffin, Carole King and Gerald Wexler. Screen Gems-EMI Music Inc. (BMI), **"You've Lost That Lovin' Feeling"** by Barry Mann, Cynthia Weil and Phil Spector. Screen Gem-EMI Music Inc. (BMI), EMI Blackwood Music Inc. obo Mother Bertha Music (BMI).

SYNOPSIS – At 16 years old, Carole King (then known as Klein) is a songwriter selling originals in Manhattan where she soon meets her creative collaborator Gerry Goffin. When Carole becomes pregnant, Gerry asks her hand in marriage and together their musical success skyrockets. While developing hit numbers for The Drifters, Bobby Vee and The Shirelles, Carole and Gerry meet the creative duo Cynthia Weil and Barry Mann, and the couples develop a friendship and rivalry resulting in an incredible cascade of music. When Gerry suddenly confesses that he is unhappy with their marriage, Carole, blindsided, must navigate the test of their relationship while discovering her own voice. Recording her album Tapestry, Carole's songs are a smash hit that defined a generation. ●

BEAUTIFUL: THE CAROLE KING MUSICAL



Ruth Acheampong

*Uptown Singer /
Shirelle (Beverly) /
Ensemble*

*Understudy: Little Eva /
Lucille / Shirelle (Doris)*

ROYAL MTC First appearance.

OTHER THEATRE *The Music Man* (College Light Opera Company); *L'amant anonyme* (Voicebox: Opera in Concert); *The World Goes 'Round* (Opera McGill); *Lost in the Stars* (Annapolis Opera).

TRAINING Graduate diploma in Performance (McGill University); M.Mus in Opera and Voice (McGill University); B.A. in Music (University of Guelph).

ET CETERA I am so grateful for this opportunity! Thank you to my beautiful family for their support.



Andre Anthony

*Lead Drifter /
Ensemble*

*Understudy: Drifter 2
Vocals, Student, Keys /
Guitar Player*

ROYAL MTC First appearance.

OTHER THEATRE *Kinky Boots* (Mirvish); *Rock of Ages* (Stage West); *Only In Vegas* (Mayfield Theatre); *Joseph and the Amazing Technicolor Dreamcoat* (CPA Centre); *Handel's Messiah Rocks: A Joyful Noise* (Living Arts Centre).

TV *The Boys* (Amazon Prime); *Platonic* (NBC).

TRAINING Music Degree (Thompson Rivers University), Acting Diploma (Humber College).

ET CETERA Instagram: @Mr.AndreAnthony
BeReal: realAndreAnthony
Website: andreanthony.net John 3:16

DISCOVER **MONTREAL'S BROADWAY**, WHERE

Beautiful

The Carole King Musical

CAME TO LIFE THIS FALL!

LOCATED IN THE **HEART** OF MONTREAL.
THE SEGAL CENTRE IS DEDICATED TO CREATING, PRODUCING, AND
PRESENTING **WORLD-CLASS ENGLISH-LANGUAGE THEATRE.**

HERE FOR THE DRAMA?

FOLLOW US **@SEGALCENTRE** ON SOCIAL MEDIA
FOR EXCLUSIVE BEHIND THE CURTAINS CONTENT!

SEGALCENTRE.ORG

When it comes to human rights
be instrumental



Beyond
THE
BEAT
Music of Resistance
and Change

Opens February 2
Tickets on sale now at humanrights.ca

 CANADIAN MUSEUM FOR
HUMAN RIGHTS

BEAUTIFUL: THE CAROLE KING MUSICAL



Lisa Bell

Janelle Woods /
Shirelle (Micky) /
Ensemble

Understudy:
Shirelle (Shirley)

ROYAL MTC *All is Bright, Crowns* (with CS/NAC).

OTHER THEATRE *Hairspray* - Canadian Premiere (Mirvish); *Little Shop of Horrors*, *RENT*, *The Little Mermaid*, *Mary Poppins*, *Buddy: The Buddy Holly Story*, *Footloose*, *The Full Monty*, *Joseph and the Amazing Technicolor Dreamcoat* (Rainbow); *Avenue Q* (WST); *The Vertical Hour* (PTE).

FILM/TV *Stand!*, *A Kiss Before Christmas*, *Falcon Beach*, *Missing and Alone*.

TRAINING BComm University of Manitoba - Asper School of Business.

ET CETERA 2021 Outstanding Female Performance ACTRA Award for *Stand!*. Featured vocalist for various corporate event bands and a Canadian Idol finalist. Lisa is thrilled to be back on stage in her hometown of Winnipeg. Big thanks to Royal MTC, family, friends and Kelly T for helping me get back to what I love. Hope you all enjoy this *Beautiful* show!



Tess Bengner

Carole King

ROYAL MTC *Miss Bennet: Christmas at Pemberley* (Evie nomination).

OTHER THEATRE Alice in *Alice in Wonderland* (Bad Hats/Soulpepper - Dora award); Petra in *A Little Night Music* (Royal Conservatory of Music); Johanna in *Sweeney Todd* (Dora nomination) and Cinderella in *Into the Woods* (TiFT); Dot in *Sunday in the Park with George* (Eclipse - Dora nomination); Sally Bowles in *Cabaret*

(Grand); *Girls Like That* (Tarragon); Anne Shirley in *Anne of Green Gables* (Charlottetown). Tess spent three seasons at the Shaw Festival - highlights include *Top Girls*, *Cabaret*, *Philadelphia Story*, *Sweeney Todd* and *The Next Whiskey Bar*.

TRAINING Sheridan College.

ET CETERA Tess Bengner is an actor, singer, dancer and environmentalist, born and raised in downtown Toronto. She is the co-founder of The Canadian Green Alliance, a not-for-profit devoted to bridging the gap between sustainability and theatre. For more info head to canadiangreenalliance.com or @canadiangreenalliance on Instagram. This performance is dedicated to her parents Robin and Nicky.



Louise Camilleri

Shirelle (Shirley) /
Ensemble

Understudy: Uptown
Singer / Shirelle (Beverly)

ROYAL MTC First appearance.

OTHER THEATRE Broadway: *Show Boat* (World Premiere - Gershwin Theatre); *Sophisticated Ladies* (US National Tour); Anita in *West Side Story*; *The Lord of the Rings* (World Premiere); Tanya in *Mamma Mia!*

FILM *Superstar*; *Blues Brothers 2000*; *Sharpay's Fabulous Adventure* (Disney).

ET CETERA Dora Award nomination for *Rock of Ages* (More Entertainment). Featured singer with The Tenors and featured singer with Josh Groban in concert. louisecamilleri.com

**D | I A M O N D
G A L L E R Y**

1735 CORYDON AVENUE

Locally owned and operated by the Malbranc family since 1992. Specializing in Canadian crafted custom designs and responsibly sourced gemstones. Shop online 24/7 or contact us to book your professional jewellery consultation.

DIAMOND-GALLERY.COM



Real food from the land...

At Peasant Cookery we have a passion for transforming fresh ingredients into original and trend-forward cuisines. Our rustic, seasonally inspired menu, famous housemade charcuterie, combined with exceptional service and inviting bistro atmosphere are an experience not to be missed.



**100-283 Bannatyne
204.989.7700**

BEAUTIFUL: THE CAROLE KING MUSICAL



Jeremy Carver-James

Drifter 4 / Ensemble
Understudy: *Drifter 2 & 3*
Vocals, Pianist

ROYAL MTC First appearance.

OTHER THEATRE *Come From Away* (Australian National Tour/Mirvish); *Rock of Ages*, *Rocky: The Musical*, *Ghost: The Musical*, *Hairspray*, *Joseph and the Amazing Technicolor Dreamcoat*, *Red Rock Diner* (Drayton); *Alberta Kitchen Party* (ATP); *9 to 5: The Musical* (Citadel); *Back in '59* (Thousand Islands Playhouse); *Hairspray* (TA); *Shrek* (Globe Theatre); *Pure '90s* (Stage West Calgary); *Porgy and Bess* (Opera de Montréal); and four seasons at Shaw.

TRAINING Graduated from McGill University's Schulich School of Music in Vocal Performance.

ET CETERA Betty Mitchell Awards for Outstanding Ensemble and Production of a Musical (*Alberta Kitchen Party* - 2022 - Performer/Co-writer). Special thanks to my friends, family, the Talent House team, and Goonlash for their ongoing love and support. @jcarverjames



Ellen David Genie Klein

ROYAL MTC *My Name is Asher Lev* (with Segal - Winnipeg Theatre Award).

OTHER THEATRE *Prayer for the French Republic*, *Dracula*, *Marjorie Prime*, *Travesties*, *Equus* (Segal); *The Shoplifters*, *God of Carnage* (Centaur); *Seeds* (Porte Parole US tour); *Four Anglos Surviving the Covid Apocalypse* (Director/Co-Producer, Centre St. Jax/Victoria Hall, Montreal); *Mazel Tov*, *The Leisure Society* (Director, QC English-language premieres, Infinithéâtre);

Clybourne Park, *The Book of Bob* (Director, Centaur); *Love, Loss and What I Wore* (Director/Co-Producer/Actor, Centaur); *Moonlight & Magnolias*, *Six Dance Lessons in Six Weeks*, *Intimate Exchanges* (Director, Theatre Lac-Brome); *The Savannah Sipping Society* (Director, HVT).

FILM/TV *Le Temps des Framboises*, *Mlle. Bottine*, *Transplant*, *Fatherhood*, *Brooklyn*.

ET CETERA Montreal English Theatre Award (META) nominations for *Prayer for the French Republic*, *Dracula* and *Marjorie Prime*; META and Broadway World Regional Awards for *My Name is Asher Lev*; Outstanding Performance ACTRA Award for the film *Surviving My Mother*; 2015 ACTRA Award of Excellence; Executive Artistic Director of Theatre Lac-Brome for two years; Anglophone ambassador for CQT's Rendez-Vous Théâtre.



Matthew Fletcher

Nick / Righteous Brother / Bobby Vee / Ensemble

Understudy: *Gerry Goffin*,
Neil Sedaka / BeeBop Guy

ROYAL MTC *Into the Woods*, *Shakespeare in Love* (with Citadel).

OTHER THEATRE *Antigone* (Sick + Twisted/AA Battery); *RENT*, *The Hockey Sweater*, *Les Misérables* (Rainbow); *Grease* (Winter Garden); *Million Dollar Quartet* (Port Hope); *James and the Giant Peach* (MTYP); *Kiss of the Spider Woman*, *A Man of No Importance* (Dry Cold); *Spring Awakening* (Griffin); *Heathers* (WST); *Les Misérables* (Drayton); *Crazy for You* (TBTB).

FILM/TV *Champions*, *The Porter*, *The Pinkertons*, *Triple Sensation*.

TRAINING Northwestern University, Soulepepper Training Room, Rainbow Stage Conservatory.

ET CETERA Dedicated to all the beautiful women in my life who consistently support and encourage me to become the best I can be.

For a complete list of theatre abbreviations, please refer to legend on page 4

23

SEASON

FEBRUARY 15-18, 2024
CENTENNIAL CONCERT HALL



Romeo & Juliet

"Sword-fights, romance, comedy, tragedy, music, costumes and dance: [live art] simply doesn't get any better than this..." — WINNIPEG FREE PRESS



A perfect gift for Valentine's Day!

Tickets start at \$35*.
Visit rwb.org

*PLUS TAXES & FEES



ELIZABETH LAMONT WITH FORMER RWB DANCER YUE SHI (2015-2023).
PHOTO BY DAVID COOPER, C.R.

Weekly Live Music

Kevin's Bistro



Visit us for a night out
that's worthy of a
standing ovation!



141 Bannatyne | kevinsbistro.ca | 204.221.5028
Make a reservation through OpenTable.

BEAUTIFUL: THE CAROLE KING MUSICAL



Darren Martens

Gerry Goffin

ROYAL MTC Actor: *The Three Musketeers*, *Miss Bennet: Christmas at Pemberley*, *A Christmas Carol*, *Alice Through the Looking-Glass*. Fight Director: *The Secret to Good Tea*, *New*. Assistant Fight Director: *The Rez Sisters*.

OTHER THEATRE Actor: *A Chorus Line*, *Breaking Up Is Hard To Do*, *Beauty and the Beast*, *Cinderella*, *Little Shop of Horrors*, *Les Misérables*, *The Producers* (Rainbow); *Another Way Home* (WJT); *A Little Night Music*, *The Addams Family* (Dry Cold); *Reefer Madness*, *American Idiot*, *Avenue Q* (WST); *Danny and the Deep Blue Sea* (The Keep Theatre). Fight Director: *Volare* (PTE).

FILM *Spencer Sisters* (Bell Media); *Polarized* (Enlightenment Productions); *Christmas by Starlight*, *Merry and Bright* (Hallmark).

TRAINING Bachelor's in Vocal Performance from the U of M, Opera NUOVA, Rainbow Stage Training Intensive.

ET CETERA Darren dedicates this performance to his late father, Gary.



Mike Melino

Barry Mann

ROYAL MTC First appearance.

OTHER THEATRE *Prom Queen* (The Louder We Get); *Guys & Dolls*, *It Shoulda Been You* (Segal); *Mamma Mia!* (Juste Pour Rire); *Il Trovatore*, *La beauté du monde*, *Die Zauberflöte*, *Madama Butterfly* (Opéra de Montréal); *Hairspray*, *Catch Me If You Can* (Côte Saint-Luc Dramatic Society).

FILM Canadian French chorus for *Puss in Boots 2*, *Strange World* (Disney), *The Guardians of the Galaxy Holiday Special* and *Lyle, Lyle Crocodile*.

ET CETERA For over 20 years, I've performed on stages for various events across Quebec, Ontario and Italy. I am thrilled to make my debut at Royal MTC and meet all of you in Winnipeg. I'd like to thank my family, friends and my agent Connie Rotella. Most of all, I would like to thank my partner of 11 years, Justin Muniz, who always supports and encourages me to be the best version of myself.



Davis Okey-Azunnah

Drifter 2 / Ensemble

Understudy: Lead Drifter
Vocals / Stage Manager,
Drifter 4 Vocals / Pianist

ROYAL MTC First appearance.

OTHER THEATRE Judah in *Joseph and the Amazing Technicolor Dreamcoat* (Drayton); Ja'Keith/Mayor in *Rock of Ages* (Mayfield Theatre); Jdub in *Brown Eyes* (TiFT); Rocky in *The Rocky Horror Show* (Neptune); Abdul Fakir of "The Four Tops" in *The Soul of Motown* (Stage West); *Legally Blonde* (Hart House); *Songs for a New World* (Buddies in Bad Times).

FILM/TV *Olympians at Heart* (BYUtv); *Secret Society of Second-Born Royals* (Disney+); *I Like Movies* (Mongrel Media/Netflix).

ET CETERA Davis is thrilled to be back on stage sharing the gift of storytelling and performance. He is thankful to his family, friends and agent for their endless support. Instagram: @ok.devries

For a complete list of theatre abbreviations, please refer to legend on page 4

Congrats



on 125 years!

Royal MTC is proud to work with IATSE
Local 63 members who work behind-the-
scenes building and running the show!



On sale at local bookshops &
winnipegarchitecture.ca/shop

IP BOUTIQUE

investmentpieces.com



749 St. Mary's Road | 204 594 0400
investment.pieces11@gmail.com

BEAUTIFUL: THE CAROLE KING MUSICAL



Laura Olafson
Cynthia Weil

ROYAL MTC *Into the Woods, Fun Home, Million Dollar Quartet, Private Lives, The Things We Do For Love, Harvey.*

OTHER THEATRE *Funny Girl, Falsettos, Intimate Apparel (WJT); Footloose, Joe's Coat, Mary Poppins, Breaking Up Is Hard To Do, Beauty and the Beast, Guys and Dolls: In Concert, Cinderella, Wizard of Oz, The Little Mermaid (Rainbow); Urinetown, A Man of No Importance, The Prom (Dry Cold); The Comedy of Errors, Romeo and Juliet (SIR); Iceland, Goodnight Desdemona (Good Morning Juliet) (TPM); Into the Woods, Tigers Be Still (District Theatre Collective); The Savannah Disputation (PTE); Skriker (Echo (Beach) Theatre).*

FILM/TV *Pumpkin Everything (Cartel); SkyMed (CBC/Paramount+); The Pinkertons (Buffalo Gals).*

TRAINING/TEACHING Laura graduated from Grant MacEwan University's Theatre Arts program. She also works as an EA in WSD1's Inclusion Support programs.

ET CETERA Laura was raised by brilliant and commanding women. She is a lucky

member of an all female band (Fu Fu Chi Chi Choir) and sails the seas singing with a dynamic girl group (UNIQUE3). She is emboldened by Carole and Cynthia's stories and hopes that you will be too.



Jonathan Patterson
Diamond / Righteous Brother / Lou Adler / Ensemble

Understudy: Donny Kirshner

ROYAL MTC First appearance.

OTHER THEATRE *The Pirates of Penzance, Inherit the Wind, The Jazz Singer, Guys & Dolls, The Play's the Thing, Forever Plaid, The Producers (Segal); 9 to 5 The Musical (Capitol); Million Dollar Quartet (Thousand Islands Playhouse/Sudbury Theatre Centre); West Side Story (Neptune); A Song of Fiction, Captain Aurora, To Be (Kaleidoscope).*

TEACHING Schulich School of Music of McGill University (Opera Faculty); Head of Music, National Theatre School of Canada; Private Voice Studio.

ROYAL
MTC
MANITOBA THEATRE CENTRE

THEATRE FOR FANS UNDER 30

Looking for a great night out that's easy on your wallet? Theatre Under 30 members, aged 18 - 29, have exclusive access to world-class theatre for just \$20 a seat!

SIGN UP TODAY AT ROYALMTC.CA/UNDER30

FOR MORE INFORMATION, PLEASE CONTACT
KSENIA BRODA-MILIAN AT UNDER30@ROYALMTC.CA

PRIYA NARINE IN *THE SOUND OF MUSIC*. PHOTO BY DYLAN HEWLETT.



HERMANOS

RESTAURANT & WINE BAR

JOIN US FOR DINNER
BEFORE THE SHOW!

MTC SEASON TICKET HOLDERS RECEIVE 15% OFF

179 BANNATYNE AVE | WINNIPEG, MANITOBA R3B 0R5

For reservations book at Hermanos.ca or call 204-219-0779

BEAUTIFUL: THE CAROLE KING MUSICAL



Alana Randall

Little Eva / Lucille / Shirelle (Doris) / Ensemble / Dance Captain

Understudy: Janelle Woods / Shirelle (Micky)

ROYAL MTC First appearance.

OTHER THEATRE Off-Broadway: *Vagina Monologues* (Jerry Orbach Theater); *Motown The Musical*, *Dirty Dancing*, *The Wizard of Oz*, *Forever Motown*, *Pussycat Dolls Tribute Tour* (US National Tours). Select regional: *Bend It Like Beckham: The Musical* (St. Lawrence Centre); *The Wizard of Oz* (Mirvish); *Rock of Ages* (Elgin Theatre); *Damn Yankees*, *Everybody* (Shaw); *West Side Story* (Rainbow); *Hairspray*, *High School Musical* (Drayton); *Hair* (Grand); *High School Musical* (Neptune); *Footloose* (Alumnae Theatre); *Ain't Misbehavin'* (Magnus Theatre).

FILM/TV *Hellcats*; *Made, The Movie*; *Carrie* (2013); *The LA Complex*; *Sharpay's Fabulous Adventure*.

TRAINING/TEACHING New York Film Academy; Randolph College. Certified Dance and Zumba instructor.

ET CETERA Huge thanks to the entire *Beautiful* company, agents at TH, family and Ron-el for their support and love.



Rhea Rodych-Rasidescu

Betty / Marilyn Wald
Understudy: Carole King

ROYAL MTC *Into the Woods*, 2022/23 National Mentorship Program.

OTHER THEATRE *Tuck Everlasting* (Opera NUOVA); *The Recipe* (MAP Workshop); *People, Places and Things*, *Love's Labour's Lost*, *Arcadia* (U of W); *Bake-Off* (Sarasvati: FemFest); *Ok, Probably* (Sister From Another Mister/Winnipeg Fringe);

Women of Manhattan (Beau Theatre Co/ Royal MTC ShanleyFest).

TRAINING BAH Acting University of Winnipeg, Creative Manitoba's Mentorship Program, Opera NUOVA Emerging Artist Program, Rainbow Stage's Acting Intensive.

ET CETERA Rhea is also a dialect and accent coach; her most recent credit being *Frozen River/nikwatin sîpiy* (MTYP). She is a proud recipient of the Jean Murray - Moray Sinclair Scholarship. Thank you Kelly, Floyd and Jaz, the entire company of *Beautiful*, and my friends and family for your love and support.



Dakota Jamal Wellman

Drifter 3 / Ensemble
Understudy: Drifter 4
Vocals / Engineer, Boom Operator, Camera Man

ROYAL MTC First appearance.

OTHER THEATRE *Fall On Your Knees* (CS/ Neptune/NAC/Grand); *Pool No Water* (Persephone); *SuperDogs: The Musical* (Segal); *Summer of Sonnets*, *Much Ado About Nothing* (Repercussion Theatre).

FILM/TV *Witchboard*, *The Christmas Checklist*, *Terror Train*, *About Sex*.

TRAINING Bishop's University (BA 2015), Black Theatre Workshop's AMP Program.

ET CETERA Dakota received a META for Outstanding Supporting Performance for his work on *Simone Half and Half* (Black Theatre Workshop).



Proud to support
Pimootayowin
Creators Circle.

We are working together with **Royal Manitoba Theatre Centre**.
It's just one way we are helping to open doors for a more inclusive
and sustainable tomorrow.

td.com



© The TD logo and other TD trade-marks are the property of The Toronto-Dominion Bank. M05636 (1019)

TAYLOR McCAFFREY

L A W Y E R S

Taylor McCaffrey proudly supports the Royal MTC and gratefully acknowledges the rich contribution made by Manitoba's Arts Community to our province.

Get ready for an exceptional performance as Beautiful: The Carole King Musical hits the stage. Immerse yourself in the story of this iconic musician and find inspiration to discover your own voice.

Break a leg to all those involved in the production.

2200-201 Portage Ave
Winnipeg, Manitoba | R3B 3L3
204.949.1312 | www.tmlawyers.com

BEAUTIFUL: THE CAROLE KING MUSICAL



Chase Winnicky

Neil Sedaka / BeeBop Guy / Ensemble; Understudy: Barry Mann, Nick / Righteous Brother / Bobby Vee, Diamond / Righteous Brother / Lou Adler

ROYAL MTC Jack in Into the Woods, 2021/22 National Mentorship Program.

OTHER THEATRE *Narnia* (Bad Hats/MTYP); *The Wizard of Oz* (Rainbow); *Kiss of the Spiderwoman*, *The Addams Family* (Dry Cold); *Alice in Wonderland* (Diversified Theatre); *Much Ado about Nothing* (Dauntless); *Andy Warhol Musical* (Mirvish workshop); *The Nutcracker* (National Ballet of Canada); Lead vocalist for Oceania Cruises. Director: *The Prom* (Dry Cold - Canadian premiere). Assistant Director: *Million Dollar Quartet* (TC). Upcoming: *Directing Songs for a New World* (WJT).

FILM/TV *A Christmas Cookie Catastrophe*, *'Tis the Season to be Merry*, *Crashing through the Snow* (Hallmark); *SkyMed* (Paramount+); *The Porter* (CBC/BET+).

TRAINING Randolph College for the Performing Arts.

ET CETERA Love to my family, Chris and my agent Sarah at 10 Talent Management!



Cory Wojcik

Donny Kirshner

ROYAL MTC Actor: *The Three Musketeers*, *All is Bright*, *The Cottage*, *A Doll's House*, *Once* (with Grand), *Kill Me Now* (with NAC), *Black Coffee*, *Hand to God*, *Billy Elliot the Musical*, *Late Company*, *Harvey*, *Miracle on South Division Street*, *August: Osage County*. Assistant Director: *Morning After Grace*.

OTHER THEATRE Actor: *Much Ado About Nothing* (SIR); *The Wedding Party*, *Butcher*

(PTE); *Strike! The Musical*, *Beauty and the Beast*, *The Producers* (Rainbow); *The Jungle Book*, *Jabber*, *The Big League* (MTYP); *Another Way Home* (WJT); *A Man of No Importance* (Dry Cold).

FILM/TV Actor: *Champions*, *Dark Harvest*, *Breakthrough*, *Night Hunter*, *A Dog's Purpose*.

ET CETERA Later this year, you can catch Cory in Royal MTC's regional tour with 2019 Fringe hit *Mix Tapes From My Mom* or later this season in *The Comeback* on the Mainstage. Love to Heather and the boys.



Jillian Willems

Standby - Cynthia Weil, Genie Klein, Betty / Marilyn Wald

ROYAL MTC Choreographer: *Into the Woods*. Director/Choreographer: *9 to 5 The Musical* (Lawyers Play), *The World Goes 'Round* (Lawyers Play).

OTHER THEATRE Select creative credits: *Afterlight* (Director - The Keep/Walk&Talk/Rainbow); *The Snail and the Whale* (Director - MTYP); *Guys & Dolls* (Director - WSO/Rainbow); *Pippin* (Choreographer - The ViC/WST); *American Idiot* (WST). Select performance credits: *Antigone* (Understudy - Sick + Twisted/AA Battery); *Cinderella* (Rainbow); *South Pacific* (WSO/Rainbow); *Charlie Brown* (MTYP); *South Pacific* (Regina Symphony); *Heathers* (WST).

TRAINING/TEACHING Artistic associate and movement instructor with the Village Conservatory for Music Theatre. Teacher at Industria Dance Centre. Mentored by Ari Weinberg in theatre management and by Brenda Gorlick in musical theatre choreography.

ET CETERA Endless gratitude to my family, and to my sweet Sully Mae!

RARE EXQUISITE WORLDLY

WE'RE MAKING
EXOTIC TASTES
EASY TO FIND.






Distinctions
EXCEPTIONAL WINES & SPIRITS

Distinctions brings together some of the world's most exclusive wines and spirits. Whether you're a connoisseur or simply curious, you'll appreciate the care that goes into our hand-picked collection. Explore our rare selection and take home something priceless today.

GRANT PARK LIQUOR MART
1120 GRANT AVENUE

 **100 LIQUOR MART**
SERVING MANITOBA SINCE 1923

   [LiquorMarts.ca](https://www.LiquorMarts.ca) | **18+** ENJOY RESPONSIBLY



Action.
Performance.
Adjustments.

Details. Details. Details.

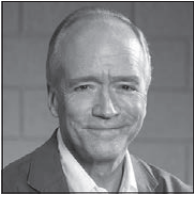
Manage the vision.
Bring it to life.

We pay attention
to everything.
The focus is on you.

You belong in the company of leaders.
[lawtonpartners.ca](https://www.lawtonpartners.ca)

 **Lawton Partners**
WEALTH MANAGEMENT

BEAUTIFUL: THE CAROLE KING MUSICAL



Douglas McGrath

Book

Douglas McGrath was a filmmaker and playwright. Most recently, he directed the HBO documentary *Becoming Mike Nichols*. He collaborated with Woody Allen on the screenplay for *Bullets Over Broadway*, for which they were nominated for an Academy Award. He wrote and directed the Oscar-winning *Emma* from the Jane Austen novel; *Company Man*; Charles Dickens' *Nicholas Nickleby*, which won the Best Ensemble Cast from the National Board of Review; *Infamous*; and the HBO documentary *His Way*, nominated for an Emmy for Outstanding Nonfiction Special. His play *Checkers* opened the 30th anniversary season of New York's acclaimed Vineyard Theatre. His book for *Beautiful: The Carole King Musical* was nominated for Tony, Drama Desk and Outer Critics Circle awards. He began his career as a writer for *Saturday Night Live* in what was incontestably the worst year in the show's history. He has written essays on the arts and politics for *The New Republic*, *The New Yorker*, *The Nation*, *The New York Times* and *Vanity Fair*. Douglas McGrath passed away on November 4, 2022.



Gerry Goffin

Words & Music

Born in Brooklyn in 1939, Gerry Goffin met Carole King at Queens College, and their musical collaboration began almost immediately. They married in 1959, and that same year wrote their first hit song "Will You Love Me Tomorrow?" (The Shirelles). The duo penned more than 50 top-40 hits including "The Locomotion," "Natural Woman" and "Up on the Roof". In 1987, Gerry and Carole were inducted into the Songwriters Hall of Fame, and the Rock & Roll Hall of Fame in 1990. Gerry has left an indelible mark on American music.



Carole King

Words & Music

Pop music would be very different without the contributions of Carole King, who at age 17 wrote her first #1 hit with Gerry Goffin, "Will You Love Me Tomorrow?", for the Shirelles. The dozens of chart hits Carole and Gerry wrote during this period became legendary, but it was 1971's *Tapestry* that took Carole to the pinnacle, speaking personally to her contemporaries and providing a spiritual musical backdrop to the decade. More than 400 of her compositions have been recorded by over 1,000 artists, resulting in 100 hit singles and six Grammys.



**McNALLY
ROBINSON**

Recommended Reading

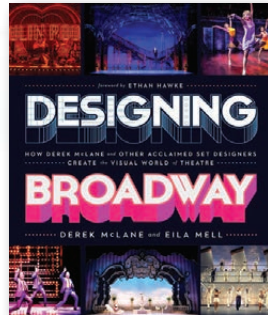
inspired by *Beautiful: The Carole King Musical*



Girls Like Us
by Sheila Weller



A Natural Woman
by Carole King



Designing Broadway
by Derek McLane & Eila Mell

McNALLY ROBINSON BOOKSELLERS
1120 Grant Avenue · The Forks · mcnallyrobinson.com

WHEN YOU SUPPORT US, YOU SUPPORT OUR COMMUNITY



**McNALLY
ROBINSON**

BEAUTIFUL: THE CAROLE KING MUSICAL



Barry Mann
Words & Music

Barry Mann has written the melodies of some of the most influential pop songs in musical history. In addition to “You’ve Lost That Lovin’ Feeling”, the most-played song of the last century, and the songs heard in *Beautiful*, he composed later standards like “Somewhere Out There” (winner of two Grammys), “Here You Come Again”, “Sometimes When We Touch”, “Just Once” and “Don’t Know Much”. Together he and Cynthia Weil have amassed an incredible 112 pop, country and R&B awards from Broadcast Music Inc. for significant radio air play. He has been inducted into both the Songwriters Hall of Fame and the Rock & Roll Hall of Fame.



Cynthia Weil
Words & Music

Cynthia Weil was the acclaimed lyricist of classic songs such as “You’ve Lost That Lovin’ Feeling”, the most-played song of the 20th century. In addition to the songs heard in *Beautiful*, she set the words to later standards including “Somewhere Out There”, “Here You Come Again”, “He’s So Shy”, “Just Once” and “Don’t Know Much”, to name just a few. Cynthia was inducted into the Songwriters Hall of Fame, the Rock & Roll Hall of Fame, honoured with multiple Grammy nominations and two Grammy awards for “Somewhere Out There” as the Motion Pictures Song of the Year and Song of the Year. Cynthia passed away on June 1, 2023.

Design with Community in Mind

Engineering | Architecture | Environmental

Manitoba Museum - Allway Hall

 stantec.com

Bonaventure TRAVEL INC.

T 204-488-6653 | TF 888-550-8998 | E info@bonaventuretravel.ca | bonaventuretravel.ca
428 Academy Road, Winnipeg, MB R3N 0C3  |  | 

Professional. Local. Travel Services Exceeding Expectations.

Photo: iStockphoto.com
Jonathan Stannard

Sony/ATV Music Publishing

Music by Arrangement

Sony Music Publishing, established in 1995 as a joint venture between Sony and Michael Jackson, is the world's leading music publisher. Sony owns or administers more than two million copyrights, including those from such iconic music catalogs as EMI Music Publishing, Leiber & Stoller, Mijac Music, Motown and Famous Music. Sony controls many of the best-known songs ever written, including "New York, New York", "All You Need Is Love", "You've Got a Friend", "Ain't No Mountain High Enough", "Over the Rainbow" and "Stand By Me". In addition, Sony represents the copyrights of such legendary artists as The Beatles, Leonard Cohen, Neil Diamond, Bob Dylan, Michael Jackson, Carole King, Joni Mitchell, Queen, The Rolling Stones, Sting, The Supremes, Hank Williams and Stevie Wonder, among others. Its ever-growing list of chart-topping artists and songwriters includes Alicia Keys, Lady Gaga, P!nk, Shakira and Taylor Swift.



Kelly Thornton

Director

ROYAL MTC *Sexual Misconduct of the Middle Classes, Into the Woods, Orlando, All is Bright, Bang Bang* (with Belfry).

OTHER THEATRE Eighteen years as Artistic Director of Nightwood Theatre – credits include *Unholy, The Penelopiad, Between the Sheets, The List, That Face, The Danish Play* (NAC, Aveny-Teatret, Copenhagen; Magnetic North); *Bear With Me, Mathilde* and *China Doll*. Elsewhere: *Vigil* (TiFT); *The Comedy of Errors* (CS); *This Hotel* (Passe Muraille); and nine seasons of Nightwood's Lawyer Show

staging Shakespeare's comedies and Broadway musicals.

TEACHING Associate Director of the Directing Program at National Theatre School 2010-2013.

ET CETERA Kelly is Royal MTC's Artistic Director. She's been honoured with the Pauline McGibbon Award, the YWCA Woman of Distinction, a Harold Award, Dora and Evie Award nominations. She thanks her incredible family for their love and support.



Floyd Ricketts

Music Director

ROYAL MTC *The Color Purple* (with Citadel).

OTHER THEATRE Selected: *The Phantom of the Opera, Les Misérables, The Little Prince, The Addams Family* (Grand); *The Flight* (Gargantua); *Choir Boy* (CS); *Cabaret, Venus* (NTS); *Medusa's Children* (OperaQ); Vocal Director: Disney Cruise Lines; Intern Music Director: *One Touch of Venus, Trouble in Tahiti* (Shaw).

TEACHING Assistant Professor/Director of Choral Activities, Skidmore College.

ET CETERA Recipient of Dora Mavor Moore Award (Composition), Elizabeth Sterling Haynes Award (Outstanding Music Direction) and Montreal English Theatre Award (Outstanding Contribution to Theatre). Artistic Director at Ensemble Noir; Chorusmaster at L'Orchestre Philharmonique et Choeur des Mélomanes.

BEAUTIFUL: THE CAROLE KING MUSICAL



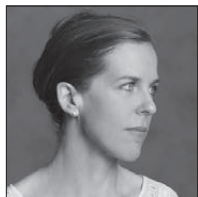
Jaz Sealey
Choreographer

ROYAL MTC Actor: *Guys and Dolls* (with Citadel/TC).

OTHER THEATRE Choreographer: *The Hockey Sweater* (Rainbow). Actor: *Aladdin* (Original Broadway Cast and 1st National Tour); *Jesus Christ Superstar* (Broadway); five shows with the Stratford Festival; *Dirty Dancing* (Mirvish); *Yoshimi Battles the Pink Robots* (La Jolla); *A Christmas Carol* (TA); *Beauty and the Beast* (Neptune); *She Loves Me* (Dry Cold); six shows with Rainbow Stage including *Scarecrow in The Wizard of Oz*.

TRAINING Royal Winnipeg Ballet; Graduate of Grant Park Performing Arts with Honours.

ET CETERA A former hockey player turned performing artist and guitar player. Currently in his 10th year of *Aladdin* on Broadway. Habbagoodah Mom! @jazsealey



Gillian Gallow
Set Designer

ROYAL MTC *Into the Woods*, *The Runner* (with Human Cargo), *Miss Bennet*; *Christmas at Pemberley*, *A Christmas Carol*, *Hand to God*, *Million Dollar Quartet*, *Seminar* (with Mirvish), *Hirsch*, *Venus in Fur*, *God of Carnage* (with VP), *One Flew Over the Cuckoo's Nest* (with TC).

OTHER THEATRE Selected: *Hadrian and Louis Riel* (COC); *Long Day's Journey Into Night*, *The Physicists*, *Hirsch*, *The Three Musketeers* (Stratford); *The Shadow of a Doubt*, *An Octoroon*, *The Importance of*

Being Earnest, *The Russian Play* (Shaw); *Art, August: Osage County*, *Idomeneus*, *Orlando* (Soulpepper); *King Lear*, *Stuff Happens* (NAC); *Mahabharata* (Why Not Theatre and Shaw).

ET CETERA Awards: Gillian is the recipient of the 2021 Siminovitch Prize in Theatre, the 2018 Virginia and Myrtle Cooper Award in Costume Design and she has been awarded four Doras.



Louise Bourret
Costume Designer

ROYAL MTC First engagement.

OTHER THEATRE *Josephine: A Musical Cabaret*, *Prayer for the French Republic*, *Dracula*, *SuperDogs*; *I Love You, You're Perfect, Now Change*; *Tribes*, *My Name Is Asher Lev*, *Noises Off*, *Million Dollar Quartet*, *Marjorie Prime*, *The Angel and the Sparrow* (now titled *Piaf/Dietrich*), *A Doll's House - Part 2*, *Indecent*, *Mythic*, *The Times They Are A Changin'*, *April Fools* (Segal). Co-Costume Designer: *The Hockey Sweater: A Musical* (Segal). DWYT: *Soul Doctor: Journey of a Rock Star Rabbi*, *The Dybbuk*, *The Producers*, *It Shoulda Been You*, *A Century Songbook* (Segal). Cirque du Soleil; Cirque Éloize; Festival des FrancoFolies de Montréal; the Montreal Jazz Festival; *Légendes Fantastiques*; *Cavalia*; *Era: Intersection of Time* (Shanghai); *Daughters of Mile End*, *Infinity Ball* (Lune Rouge Entertainment); *Piaf/Dietrich* (Mirvish); *Vroom*, *Village Québécois d'Antan* (Moment Factory).

ET CETERA META winner for Outstanding Costume Design for *Travesties*.



THE
Free Press

**PROUD
SUPPORTER**
OF OUR **COMMUNITIES**

To subscribe call
204-697-7001
or visit
[winnipegfreepress.com/
subscribe](http://winnipegfreepress.com/subscribe)

BEAUTIFUL: THE CAROLE KING MUSICAL



Hugh Conacher
Lighting Designer

ROYAL MTC (selected) Lighting & Video Designer: *The Mountaintop, Vietgone, Venus in Fur*. Video Designer: *Network*. Lighting Designer: *The Secret to Good Tea, Into the Woods, New, Orlando, Women of the Fur Trade, Fun Home, The Color Purple* (with Citadel), *Kill Me Now* (with NAC), *Seminar* (with Mirvish), *Dry Lips Oughta Move to Kapuskasing* and many other productions since the '80s.

OTHER THEATRE Hugh collaborates with choreographers, visual artists and dance and theatre companies worldwide.

ET CETERA Hugh enjoys working beyond the constraints of traditional lighting design using various forms of interactive media, video and photography. His photographic work resides in private collections and has been published worldwide. Hugh is a member of the Associated Designers of Canada and L'Association des professionnels des arts de la scène du Québec. www.pellucid.me



Sylvin Sévigny
Sound Designer

ROYAL MTC First engagement.

OTHER THEATRE Sylvin is Segal Centre's Technical Director and was the Sound Designer on *Mythic* and *April Fools*. Other credits include: 2018 G7 event in Charlevoix, Cirque du Soleil touring and show support, and Technical Director and Sound on multiple Quebec/Canadian tours.

ET CETERA AD and PM on "Uapen Nuta Terre de nos Aïeux" videoclip for Katia Rock Innu artist.



Justin Stadnyk
Assistant Director

ROYAL MTC Actor: *The Sound of Music* (with Citadel), *Into the Woods, As You Like It* (with Citadel), *Roald Dahl's Matilda the Musical* (with Arts Club/Citadel), *Grumpy Old Men: The Musical, White Christmas, The Boys in the Photograph* (with Mirvish), *Fiddler on the Roof, The Wave*.

OTHER THEATRE *Kinky Boots* (Mirvish); *The Prom, A Gentleman's Guide to Love & Murder* (Dry Cold); *Dear Jack, Dear Louise, Falsettos* (WJT); *Pal Joey, Into the Woods* (TIFT); *A Little Night Music, Wonderful Town* (Shaw); *Saturday Night Fever* (National Tour); *Kinky Boots, Hairspray, Camelot, The Mikado* (Drayton); *Rock Legends, Footloose* (Chemainus); *Mamma Mia!, Legally Blonde, Blood Brothers* (TA); *Anne of Green Gables, Ring of Fire, The Full Monty* (Charlottetown); *Joseph and the Amazing Technicolor Dreamcoat, Rent* (Rainbow); *Robin Hood, Cinderella* (Ross Petty).

FILM/TV *Who Was I That Night* (Lifetime); *King of the Camp* (YTV).

ET CETERA Thank you for continuing to support the arts! Say hi to Justin @j_stadnyk. justinstadnyk.com



ELEVATING ARTS AND CULTURE

Air Canada is a proud airline partner of the Royal Manitoba Theatre Centre's Black & White Ball. We soar together when we support arts and cultural institutions in the communities we serve.

#flytheflag @aircanada

ÉLEVONS LES ARTS ET LA CULTURE

À titre de transporteur aérien, Air Canada est fière partenaire de l'événement Black & White Ball du Royal Manitoba Theatre Centre. En soutenant les institutions culturelles et artistiques dans les collectivités que nous desservons, nous les aidons à aller toujours plus haut, avec nous.

#HautLeDrapeau @aircanada

A STAR ALLIANCE MEMBER
MEMBRE DU RÉSEAU STAR ALLIANCE



AIR CANADA

BEAUTIFUL: THE CAROLE KING MUSICAL



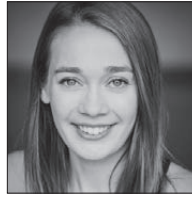
Melanie St-Jacques
Stage Manager

ROYAL MTC First engagement.

OTHER THEATRE 23 years as a Stage Manager - selected credits include: *The Hockey Sweater*, *Travesties*, *The Apprenticeship of Duddy Kravitz: The Musical*, *A Doll's House*, *Who's Afraid of Virginia Woolf?*, *Houdini*, *Fallen Angels*, *Man of La Mancha* (Segal); *Beethoven Lives Upstairs*, *Andersen's Inkwell*, *Alice's Adventures in Wonderland*, *The Jungle Book*, *The Little Prince and Alice Through the Looking Glass* (Geordie); *Every Brilliant Thing*, *Bloodshot* (Hudson Village Theatre); *Adventures of a Black Girl in Search of God* (Centaur/NAC/BTW); *Innocence Lost* (Centaur/NAC); *King Dave*, *At the Beginning of Time*, *The Last Wife*, *In Absentia*, *Schwartz's The Musical*, *Michel and Ti Jean*, *Doubt*, *The Carpenter*, *The Caretaker*, *Condoville*, *Long Days' Journey Into Night*, *Proof*, *Copenhagen*, *Art*, *Dinner With Friends* (Centaur); *A Few Good Men* (Neptune).

TRAINING/TEACHING Dawson Theatre Program graduate. Teaches and coaches at NTS.

ET CETERA So happy to be working with this amazing team of artists. Enjoy the Beauty!



Zahra Larche
Assistant Stage Manager

ROYAL MTC Stage Manager: *Sexual Misconduct of the Middle Classes*.

Assistant Stage Manager: *The Sound of Music*, *Into the Woods*, *Network* (with Citadel), *Calpurnia* (with NAC/BTW), *Bang Bang* (with Belfry). Apprentice Stage Manager: *Buying the Farm* (tour), *Roald Dahl's Matilda The Musical*, *Vietgone* (with fu-GEN/Hope and Hell), *The Humans*. Assistant Production Manager (2017/18, 2020/21, 2021/22 seasons).

OTHER THEATRE (selected) Stage Manager: *The Hockey Sweater* (Rainbow). ASM: *Volare* (PTE). Various credits with Hudson Village Theatre, Manitoba Opera, Geordie Productions and A Company of Fools.

TRAINING Graduate of the National Theatre School of Canada - Production Program (2017).

ET CETERA A very special thanks to my Royal MTC family, my parents, my family and friends from Gatineau to Tasmania, Ilana Modulevsky, Brooklyne Alexander, my graduating class at NTS, and all the wonderful folks who made this show possible!

37TH ANNUAL
WINNIPEG
FRINGE
THEATRE
FESTIVAL

JULY
17-28

Save the dates because you're not going to want to miss the most entertaining two weeks of the summer! Presented by Royal MTC. WINNIPEGFRINGE.COM

PHOTO: LEE COOPER

BEAUTIFUL: THE CAROLE KING MUSICAL



Tori Popp

Assistant Stage
Manager

ROYAL MTC Assistant Stage Manager: *The Sound of Music, 9 to 5 The Musical* (Royal MTC/MBA Lawyers Play). Apprentice Stage Manager: *New, Morning After Grace*. Lighting Design Apprentice: *A Christmas Carol*.

OTHER THEATRE Festival Manager of the Winnipeg Fringe Theatre Festival. Assistant Stage Manager: *Afterlight* (The Keep Theatre/Walk&Talk Theatre Company); *Charlie Brown Double Bill* (MTYP).

TRAINING Bachelor of Arts Hons., with a specialization in Theatre Production and Stage Management (University of Winnipeg 2017). Stage Management and Production Assistant Practicum (Banff Centre 2018-2019).

ET CETERA Love always to FIC and M&D, and big congrats to the whole team!



Kyra Krassnigg

Apprentice Stage
Manager

ROYAL MTC Assistant Stage Manager: *The World Goes 'Round* (Royal MTC/MBA Lawyers Play).

OTHER THEATRE Stage Manager: *A Little Bit of Love - A New Musical Workshop, FAME* (WST); *New Beginnings in a New World - A Million Dreams for ANCOP*. Apprentice Stage Manager: *The Prom* (Dry Cold). Stage Crew: *A Gentleman's Guide to Love & Murder* (Dry Cold).

TV 1st Assistant Director: *Maria and the Menos* (ODE Productions).

TRAINING Graduate of the University of

Manitoba with a B.Mus in Classical Voice and Music Education - Minor in Theatre. Accredited with gold medal in Music Education (2022).

ET CETERA Thanks to Royal MTC for this opportunity and to my friends, family and dog, Stella, for your endless support.

Music Theatre International

Licensing Agency

Music Theatre International (MTI) is one of the world's leading theatrical licensing agencies, granting theatres from around the world the rights to perform the greatest selection of musicals from Broadway and beyond. Founded in 1952 by composer Frank Loesser and orchestrator Don Walker, MTI is a driving force in advancing musical theatre as a vibrant and engaging art form.

MTI works directly with the composers, lyricists and book writers of these musicals to provide official scripts, musical materials and dynamic theatrical resources to over 100,000 professional, community and school theatres in the US and in over 150 countries worldwide.

MTI is particularly dedicated to educational theatre, and has created special collections to meet the needs of various types of performers and audiences. MTI's Broadway Junior™ shows are 30- and 60-minute musicals for performance by elementary and middle school-aged performers, while MTI's School Editions are musicals annotated for performance by high school students. ●

For a complete list of theatre abbreviations, please refer to legend on page 4

EXPLORE MORE Beautiful

EXPLORE MORE CAROLE KING

A Natural Woman: A memoir by Carole King. Carole King takes us from her early beginnings in Brooklyn, to her remarkable success as one of the world's most acclaimed songwriting and performing talents of all time. Deeply personal, King's long-awaited memoir offers readers a front-row seat to the woman behind the legend. **B KING 2012**

Girls Like Us: Carole King, Joni Mitchell and Carly Simon and the journey of a generation by Sheila Weller. Filled with the voices of many dozens of these women's intimates, who are speaking in these pages for the first time, this alternating biography reads like a novel. The author captures the character of each woman and gives a balanced portrayal enriched by a wealth of information. **782.42164 WEL 2008**

Tapestry Revisited: A tribute to Carole King. A tribute album to Carole King featuring a diverse list of artists including: Aretha Franklin, Celine Dion, The Bee Gees and more. This album re-creates King's 1971 album Tapestry. **CD POP TAPESTRY (also on Hoopla)**

EXPLORE MORE INFLUENTIAL FEMALE MUSICIANS

Gold Dust Woman: The biography of Stevie Nicks by Stephen Davis. An intriguing look at the life of the legendary musician who was one of the most successful woman in rock. The author delves into some stories

surrounding her work and life that are mysterious and glamorous – there isn't a dull moment in this unauthorized biography. **B NICKS 2017**

Reckless Daughter: A portrait of Joni Mitchell by David Yaffe. This biography tells the heart-wrenching story of a girl from Saskatchewan who became a superstar of folk music. Her influence on generations of singer-songwriters is undeniable and the author shows us why in this definitive book. **B MITCHELL 2017**

EXPLORE MORE AMERICAN MUSIC SCENE IN THE 1970'S

Daisy Jones and the Six by Taylor Jenkins Reid. A gripping novel about the whirlwind rise of an iconic (fictional) 1970s rock group and their lead singer Daisy leading up to their breakup as a band. Loosely based on Fleetwood Mac, the book uses fictionalized transcripts of interviews with band members and text from books that piece together a fascinating story. **FICTION REID**

All Hopped Up and Ready to Go: Music from the Streets of New York, 1927-77 by Tony Fletcher. The author takes us through bebop, the Latin music scene, the folk revival, glitter music, disco, punk and hip-hop as they emerged from the neighbourhood streets of New York. Fletcher goes beyond the history of the music to explain just what it was about these distinctive New York sounds that took the entire nation by storm. **781.640974 FLE 2009 ●**

There are 1.4 million books, movies, audiobooks, eBooks, and more at the Winnipeg Public Library, and all you need to borrow them is your library card. There are 20 locations throughout the city, and there's an online catalogue for requesting items for pick-up at your library of convenience. An online e-Library has thousands of eBooks, eAudiobooks and more! All free to use with your library card. Visit us online at winnipeg.ca/library.

Lottery, Sports and Casino

All your favourite games
are at PlayNow.com.



**PLAY
NOW**
Bet on Manitoba

BLACK & WHITE BALL

An Evening of Mystery...



On Saturday, November 4, more than 440 guests joined us in support of Royal MTC to UNCOVER THE MYSTERY at the Black & White Ball. It was a killer evening from start to finish as guests enjoyed a delicious meal in one of four *Clue* theme rooms, solved a very puzzling murder mystery, and then danced the night away.

On behalf of the artists supported by this fundraising event, we are deeply grateful to all the guests, sponsors, corporate table purchasers, donors and volunteers for creating another unforgettable evening.

Every season, Royal MTC invites audiences to the theatre to share in the act of imagining. Thank you for making this season possible.

Please join us at the Black & White Ball for a full evening of dining and dancing at the Manitoba Museum in Alloway Hall on **Saturday, November 16, 2024**. Reserve your corporate table or individual tickets early so you don't miss the party of the year!

Thank you for joining us at the Black & White Ball! ●





2023 Black & White Ball Committee

Event photos by Red Photo Co.

SILVER SPONSOR

HUB
Wawanesa

AUCTION SPONSOR

The Tanchak Wealth Management
Group

LIVE AUCTION SPONSOR

ADESA & Open Lane

VACATION RAFFLE

Fillmore Riley LLP

TRAVEL PARTNERS

Air Canada
Bonaventure Travel

COCKTAIL SPONSOR

Birchwood Lexus

WINE SPONSOR

Jones & Company Wine Merchants

DESSERT PARTNERS

Flour & Flower
Fete
Knapsack Coffee

PRINTING SPONSOR

Esdale Printing

SUPPORTERS

Dycom Direct Mail
Encore
EventLight.ca
Fairmont Winnipeg
Manitoba Liquor Mart
McDiarmid Flowers
Planned Perfectly
POS Systems
Red Photo Co.
Relish New Brand Experience
Soirée Event Planning
Winnipeg Free Press
6 Degrees Photobooth

PRIME TABLES

Gendis Inc
Global Drain Technologies
Granite Financial Group Inc.
Terracon Development Ltd.

CORPORATE TABLES

Birchwood Lexus
Boke Inc.
Canada Life
Cardinal Capital Management
Duha Group
Fillmore Riley
HUB
KPMG LLP
Liquor Mart
Manitoba Blue Cross
Number TEN Architecture Group

Parrish & Heimbecker Ltd.
Penner Oil
Prairie Research Associates Inc.
Red River College Polytechnic
Richardson International Ltd.
Shortline Moving
Tanchak Wealth Management
Taylor McCaffrey LLP
Wawanesa Insurance
Westgate Enterprises Ltd.
Winnipeg Building & Decorating Ltd.
Winnipeg Free Press

SPECIAL THANKS TO

Big City All Star Band
Shelby Bond
Our incredibly hard-working
volunteers and Royal MTC Staff.

COMMITTEE

Samantha Duha - Co-Chair
Kathryn Gompf - Co-Chair
Antonio Buccini
Karen Duha
Elsebeth Hansen-Kriening
Eden Jamieson
Brandi Johnson
Kelly Johnston
Rachel Nedelec
Dana Plett
Rhonda Plett
Jenny-Lou Ryan
Shelly Smith-Hines
Victoria Taylor



Director's Notes

BY SUZIE MARTIN

My first experience reading *among men* was like meeting someone at a party who makes you forget the people you came with. There was that spark, I felt myself lean forward, hanging on every word and feeling seen in that amazing way—like you've just met someone you've known all your life.

That was spring 2022—I had just started my position as Artistic Director of Theatre Projects Manitoba after two years of what, in good times felt like a “forced sabbatical” and in bad was, as I said to a friend on one of a hundred frozen river walks, the feeling that I was simply evaporating.

All the theatre artists I knew were still vibrating with this uncertainty, questioning our value, contemplating whether our life's work was simply gone forever. I found myself wondering what it meant to even call myself an artist and in a fit of passion one day scrawled on my mirror: *the only thing that makes you an artist is that you make art!*

And then suddenly here was this play! This play about two middle-aged artists labouring in obscurity—unknown, unsuccessful, broke—literally in the wilderness trying to build something that will be

meaningful to themselves and matter to the larger world. They don't yet know that they will be successful, they haven't yet found their voices, and they can't stop wearing these caricatured ideas of themselves, but nevertheless they just feel a pull to keep at it.

It is terrifying, grueling work at times, and at times full of extreme grace and breathtaking intimacy—with self, the world, and each other.

I immediately fell in love with these deeply imperfect men, first for their profound love of their craft, and second for their clear-eyed and unexpectedly tender love for each other.

We almost never get to see two men being best friends in the privacy of their own home—it has been a privilege to spend time with them in this pivotal moment as they help each other become who they are longing to become.

And speaking of help... a tremendous thank you to the incomparable creative team that has helped this production become what it longed to become! It is a gift to work with this generous group of wildly talented colleagues and friends.

And you, the final partners of the creative process—thanks for joining us and making it all matter! ●

SYNOPSIS – Al Purdy and Milton Acorn will become legendary poets, but for now, they are just two men attempting to build an A-frame cabin. In the winter of 1959, the two men are residing at Roblin Lake, ON, where their friendship grows through conversations of the struggles of life, fights over their building skills, and their shared love of poetry. As the days carry on, the two come to recognize their flaws as men trapped in a world where ideals of masculinity play an integral role in their personal expression and development as artists. ●

Theatre Projects Manitoba, proud co-producers of *among men*



Artistically ambitious, joyfully creative, and fiercely community focused, Theatre Projects Manitoba is a professional theatre company with an indie heart.


WE INVITE YOU TO JOIN US!


visit: 400A-245 McDermot Avenue
mail: 300-425 McDermot Avenue
Winnipeg, MB R3B 0S6
204.989.2400


email: theatreproj@theatreprojectsmanitoba.ca

SCAN HERE FOR AN
EXCLUSIVE TICKET OFFER



 [tpmwinipeg](https://www.instagram.com/tpmwinipeg)

 Theatre Projects Manitoba

 www.theatreprojectsmanitoba.ca



History of the A-frame Cabin

BY JASMINE HOPFE, ASSISTANT PRODUCTION DRAMATURG

There are a wide variety of meeting places where artists convene to talk, create and share. For Al Purdy and his peers, this meeting place was the A-frame. On the south side of Roblin Lake, approximately a mile outside of Ameliasburgh, Prince Edward County, Ontario, stands a cabin with a rich history and promising future. After finding the plans for the cabin in an architecture magazine, Al and his wife Eurithe decided to buy a plot of land by the historic Roblin Lake Mill and build themselves a home from the ground up. Eurithe and her father Jim Parkhurst were the first to begin construction, which was soon followed by the aid of Al and his carpenter-turned-poet friend Milton Acorn. The cabin was built in 1957, out of which Al wrote for over 40 years, and even lived semi-permanently from 1957-1959 with Eurithe and their son during a period of financial struggle.

However, Al was not alone in his use of the A-frame as a place for natural and poetic sanctuary. The A-frame became a meeting place for several others, not only poets but all sorts of writers, painters, academics, journalists and more. Margaret Atwood, Earle Birney, Margaret

Laurence, George Bowering and Michael Ondaatje are just a handful of the poets who travelled to the A-frame for a visit with Al and one another. Visitors would stay anywhere from an afternoon to a few days, drinking Al's homemade wine and discussing poetry. The A-frame became a significant meeting place for the modern generation of Canadian poets, and continues to serve as such to this day.

As time passed, the A-frame began to show its age and faulty construction. However, Al's peers refused to let the historic cabin disappear into the past. After Al's passing in 2000, Eurithe imagined a future for the property as a writer's retreat. Determined to fulfil this dream, Al's former publisher Howard White and family friend Jean Baird founded the Al Purdy A-frame Association. As a result of fundraising efforts and immense support from Al's community, the association was able to buy and rebuild the A-frame for a new generation of writers. The contractor selected to lead the restoration, Matti Kopamees, had quite a unique task ahead of him. It remained important throughout the entire process that not only the intentions of the original

construction be respected, but that Al's poetry that spoke to the A-frame be engaged with and honoured by Kopamees and his team. Kopamees regards that, supposedly, the ceiling was made from an old box car, and that the panels on the back wall were from the old Belleville train station. They didn't have much, but what they built became so much more than just a cabin.

Beginning in 2014 with the inaugural resident poet Katherine Leyton, the A-frame is now home to a residency program for the next generation of Canadian writers and scholars. Throughout the four weeks, residents are expected to either host one public event (whether that be a reading, lecture or otherwise) or complete a project that engages with the community surrounding the A-frame, in addition to their personal writing practice. Leyton's community project How Pedestrian had members of the community read the poems of Al Purdy, giving his words new life in the very place he wrote so many of them. ●

Al Purdy

Al Purdy was born in 1918, in Wooler, Ontario. He dropped out of high school at age 17 and rode the rails as an itinerant labourer in Vancouver. He lived in British Columbia during World War II, where he served in the Royal Canadian Air Force. After the war, Purdy held a number of jobs until the 1960s, when he was able to support himself through writing, editing and radio work.

Al wrote more than 30 books of rangy, colloquial, free-verse poetry that frequently took Canada, its people and its history as themes. His collections of

poetry included *The Enchanted Echo* (1944); *Poems for All the Annettes* (1962); *The Cariboo Horses* (1965), which won a Governor General's Award; *Wild Grape Wine* (1968); *Being Alive* (1978); *Birdwatching at the Equator* (1982); *The Collected Poems of Al Purdy 1956-1986* (1986), which also won a Governor General's Award; *The Woman on the Shore* (1990); *Rooms for Rent in the Outer Planets: Selected Poems 1962-1966* (1996); *To Paris Never Again* (1997); *Beyond Remembering: Collected Poems of Al Purdy* (2000). He also published the novel *A Splinter in the Heart* (1990) and the memoir *Reaching for the Beaufort Sea* (1993).

Al was appointed to the Order of Canada in 1983 and the Order of Ontario in 1987. He died in 2000 and was memorialized with a statue in Toronto's Queen's Park in 2008. ●

Milton Acorn

Canadian poet and editor Milton Acorn was born in 1923. His books of poetry include *I've Tasted My Blood* (1969); *More Poems for People* (1972); *Captain Neal MacDougal & The Naked Goddess* (1982); and *Dig Up My Heart: Selected Poems 1932-1983*. His book *The Island Means Minago* (1975) received the Governor General's Award for poetry. His work often employs human speech rhythms and vivid natural imagery, while expressing nationalist, political sentiments. He served in the Canadian Armoured Corps in World War II, spending most of his time in England. He lived in Vancouver, Toronto and Prince Edward Island before his death in 1986. ●

PRESENTS

A CO-PRODUCTION WITH THEATRE PROJECTS MANITOBA

among men

By David Yee

January 25 - February 10, 2024

PREVIEW January 24

Director	Suzie Martin [†]
Set Designer	Adam Parboosingh ^{**}
Costume Designer	Daina Leitold
Lighting Designer	Hugh Conacher ^{**}
Sound Designer	Ashley Au
Fight Director	Rick Skene
Assistant Director	Christine Leslie [†]
Assistant Set Designer	Joyce Licup ^{**†}
Assistant Lighting Designer	Anika Binding ^{**†}
Production Dramaturg	Dana Tanner-Kennedy
Assistant Production Dramaturg	Jasmine Hopfe
Stage Manager	Ridge Romanishen
Apprentice Stage Manager	Jazz Marcelino [†]

THE CAST (IN ALPHABETICAL ORDER)

Al Purdy	Eric Blais [†]
Milton Acorn	Tom Keenan

among men is performed without an intermission.

among men first premiered at Factory Theatre in April 2022, directed by Nina Lee Aquino.

Production photography by Dylan Hewlett.

^{**}Indicated designers on this production are represented by the Associated Designers of Canada, IATSE Local ADC659.

^{*}Position funded by TPM and a University of Winnipeg Research Assistant Grant [†]Position funded by TPM

[†]Past Jean Murray - Moray Sinclair apprenticeship or scholarship recipient

AMONG MEN



Eric Blais

Al Purdy

ROYAL MTC *The Three Musketeers, Miss Bennet: Christmas at Pemberley, A Doll's House, It's a Wonderful Life: The Radio Play, Clever Little Lies, The Woman in Black, Private Lives, Good People, Brief Encounter, Looking Back - West.*

OTHER THEATRE Previous shows for Theatre Projects Manitoba include *In Time, Proud, North Main Gothic, Age of Arousal and Stretching Hide*. He has also worked for various theatres including PTE, MTYP, SIR, WJT and the Vancouver Playhouse.

FILM/TV *Spencer Sisters, SkyMed, Forever Christmas, Burden of Truth, Break My Heart 1000 Times, All the Light We Cannot See, The Pinkertons, Cashing in.*

TRAINING Eric holds a BA from the University of Winnipeg and an MFA from York University.



Tom Keenan

Milton Acorn

ROYAL MTC Selected: *Bang Bang* (with Belfry), *The Cottage, Sense and Sensibility, The Humans, Shakespeare in Love* (with Citadel), *Sarah Ballenden, Hand to God, Unnecessary Farce, The Seagull, Gone with the Wind, Mrs. Warren's Profession, A Christmas Carol.*

OTHER THEATRE Selected: *Goodnight Desdemona..., White Rabbit Red Rabbit, Beethoven Blatz* (TPM); *Twelfth Night, Much Ado, The Winter's Tale, The Comedy of Errors, R & J, Henry IV* (SIR); *Snow White, The Velveteen Rabbit* (MTYP); *By Grand*

Central Station (PTE); *Hedda Gabler* (Echo Theatre); *Am I Not King?, Three Sisters* (zone41); *Dear Johnny Deere* (Persephone); *Ring of Fire* (Rainbow).

FILM/TV Selected: *Don't Even* (Crave/APTN); *Melaleuca* (4Head); *First Person Shooter* (Cartel/Tubi); several Hallmarks; *Burden of Truth* (CBC); *Channel Zero* (NBC/Universal); *Night Hunter* (Palmstar); *The Pinkertons* (Buffalo Gal); *House Party* (Comedy); *Something Beneath* (Peace Arch); *The Crooked E* (CBS).

ET CETERA Find his music at tommydouglasskeenan.com.



David Yee

Playwright

David Yee is a mixed race (half Chinese, half Scottish) playwright and actor, born and raised in Toronto. He is the co-founding Artistic Director of fu-GEN Theatre Company, Canada's premiere professional Asian Canadian theatre company. A Dora Mavor Moore Award-nominated actor and playwright, his work has been produced internationally and at home. He is a two-time Governor General's Literary Award nominee for his plays *lady in the red dress* and *carried away on the crest of a wave*, which won the award in 2015 along with the Carol Bolt Award in 2013. He has worked extensively in the Asian Canadian community as an artist and an advocate. outlawpoet.ca



Congrats to David Yee!
WINNER of the 2023
Siminovitch Prize.

For a complete list of theatre abbreviations, please refer to legend on page 4

AMONG MEN



Suzie Martin

Director

ROYAL MTC Apprentice Director: *Shakespeare in Love* (with Citadel).
Apprentice Stage Manager: *Hirsch*.

OTHER THEATRE Selected Directing: *Oh The Humanity!* (U of W, spring 2024); *God's Ear; Revolt. She Said. Revolt Again.* (U of A Studio Theatre); *Baba Yaga* (Alberta Musical Theatre Co.); *Tragedy: A Tragedy* (Blarney Productions); *A Midsummer Night's Dream* (Citadel Young Co.); *Over Her Dead Body* (Small Matters/Fringe Theatre Adventures); *Suor Angelica, Gianni Schicchi* (Manitoba Underground Opera); *The Cherry Orchard* (TBTR/little ECHO theatre).

TRAINING/TEACHING Suzie holds an MFA in Directing and a teaching award from the University of Alberta and is a graduate of the University of Winnipeg Dept of Theatre & Film.

ET CETERA Suzie is proud to be the Artistic Director of Theatre Projects Manitoba - the company where she took some of her first directing steps over a decade ago! (Much love to my endlessly supportive mum.)



Adam Parboosingh

Set Designer

ROYAL MTC *Yaga, Bang Bang* (with Belfry), *Buying the Farm* (tour).

OTHER THEATRE Scenery and Lighting Design: *Stupid Fucking Bird* (U of W); Scenery Design: *Pals, or Scenes from a Friendship* (WJT); Scenery Design: *Twelfth Night* (SIR); Scenery Design: *The Prom* (Dry Cold); Lighting Design: *Narrow Bridge* (WJT); Lighting Design: *Antigone* (Sick +

Twisted); Scenery and Lighting Design: *Gentlemen's Guide to Love and Murder* (Dry Cold); Scenery Design: *Shakespeare's Will* (SIR); Lighting Design: *Salt Baby* and *Lunenburg* (Magnus Theatre).

TEACHING Associate Professor in Theatre Design at University of Winnipeg.

ET CETERA Adam's ongoing support comes from his wife Tamara and three kids (Mackenzie, Keaton and Harrison) and dog Coco. He is a member of the Associated Designers of Canada.



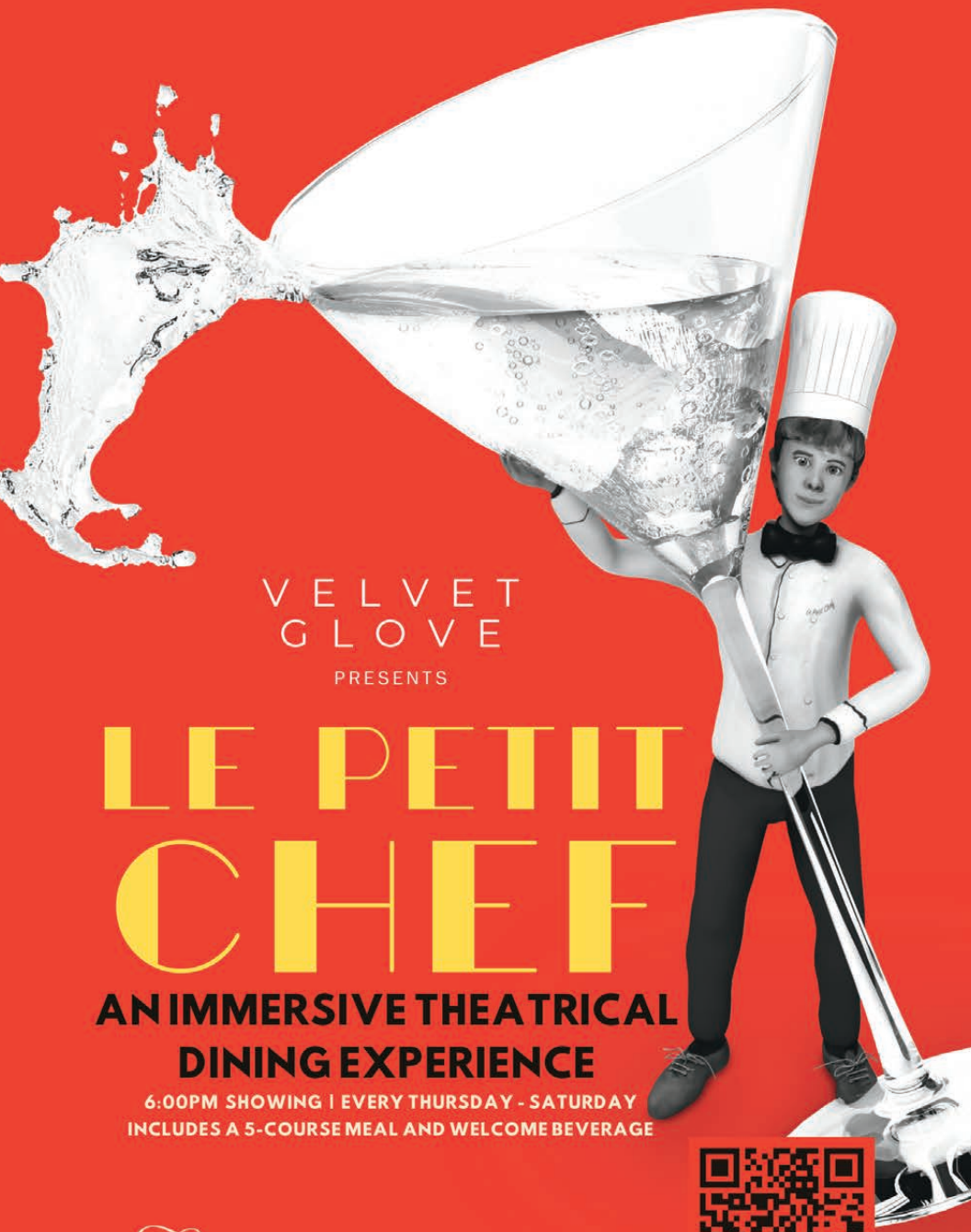
Daina Leitold

Costume Designer

ROYAL MTC Set & Props Designer: *Mix Tapes From My Mom* (regional tour).
Assistant Costume Designer: *The Three Musketeers*.

OTHER THEATRE Costume Designer: *Narrow Bridge, Bar Mitzvah Boy* (WJT); *Awaken* (SIR/zone41). Set, Props and Costume Designer: *Fame* (WST); *Hamlet, Timon of Athens* (SIR); *Glad to Be Here, Meet Me at Dawn, Constellations, Edward II, Cock, Bull, The Cherry Orchard* (TBTR); *Bike and Circuses, Wild Wild Wilderness, Unplugged, Ebb & Flo* (Green Kids Inc.); *Red Earth* (One Trunk/TPM). Set & Props Designer: *The Dark Lady* (SIR); *Plé* (MTYP).

ET CETERA Evie Award for Outstanding Production Design - *Red Earth* (One Trunk/TPM).



VELVET
GLOVE

PRESENTS

LE PETIT CHEF

**AN IMMERSIVE THEATRICAL
DINING EXPERIENCE**

6:00PM SHOWING | EVERY THURSDAY - SATURDAY
INCLUDES A 5-COURSE MEAL AND WELCOME BEVERAGE

Fairmont
WINNIPEG

SCAN TO LEARN MORE, VIEW MENU
AND PURCHASE TICKETS!





Hugh Conacher
Lighting Designer

ROYAL MTC (selected) Lighting & Video Designer: *The Mountaintop, Vietgone, Venus in Fur*. Video Designer: *Network*. Lighting Designer: *The Secret to Good Tea, Into the Woods, New, Orlando, Women of the Fur Trade, Fun Home, The Color Purple* (with Citadel), *Kill Me Now* (with NAC), *Seminar* (with Mirvish), *Dry Lips Oughta Move to Kapuskasing* and many other productions since the '80s.

OTHER THEATRE Hugh has designed sets, lighting and video for 27 productions with Theatre Projects Manitoba since 2006. He collaborates with choreographers, visual artists and dance and theatre companies worldwide.

ET CETERA Hugh's photographic work resides in private collections and has been published worldwide. He is a member of the Associated Designers of Canada and L'Association des professionnels des arts de la scène du Québec. www.pellucid.me



Ashley Au
Sound Designer

ROYAL MTC *Burning Mom, Sexual Misconduct of the Middle Classes, Trouble in Mind, Orlando*. 2022/23 National Mentorship Program.

TRAINING B.Mus (Jazz Performance) Brandon University, School of Music.

ET CETERA Ashley Au (she/they) is a Winnipeg-based bassist, composer, sound artist, arranger and queer creative. A multifaceted musician, Ashley specializes in

the upright and electric basses - performing, touring and recording extensively. As a composer and sound artist, Ashley's work can be found behind various theatre and dance productions in the city. Current and past projects include work with Weakerthans frontman John K. Samson; composer/trumpeter Chuck Copanace; and Polaris Prize-nominated hip-hop outfit Super Duty Tough Work. Ashley is the Artistic Director of Cluster: New Music + Integrated Arts Festival and programs the Pride Winnipeg Festival. She recently scored her first opera, *Inertia* (libretto by Christene Brown), commissioned by Loose Tea Music Theatre (TO).



Rick Skene
Fight Director

ROYAL MTC *The Three Musketeers, Venus in Fur, A Midsummer Night's Dream, Richard III, Oleanna, Macbeth, Burn This, Good Night Desdemona (Good Morning Juliet), Noises Off, Burn This, The Miracle Worker, The Lonesome West, Shakespeare's Dog, The Boys in the Photograph, Wait until Dark, The Beauty Queen of Leenane*.

OTHER THEATRE PTE, MTYP, TPM, MB Opera, Rainbow Stage, RWB and Théâtre Cercle Molière. Rick was co-founder and associate artistic director of TPM.

FILM/TV 35 years of over 200 credits as a stunt coordinator, 2nd unit director, stunt driver and stunt performer.

TEACHING 35 years teaching Acting, Stage Combat, Filmmaking, Mime and Improvisation at the U of W Department of Theatre and Film.

ET CETERA As always, Rick would like to give a big thank you shout out to his wife Jan who, as he is quick to point out, holds his universe together.

AMONG MEN



Christine Leslie
Assistant Director

ROYAL MTC Apprentice Director: *Yaga*.

OTHER THEATRE Assistant Director: *Arcadia* (U of W). Director/Creator/Actor: *Balloon Girl* (U of W). Acting: *Love's Labour's Lost*, *We are (t)here*, *Middletown*, *A Midsummer Night's Dream*, *Frankenstein* (U of W); *School of Rock* (WST); *Miracle on 34th Street a Radio Play* (Dalnavert Museum).

TRAINING B.A.H. Acting - Theatre & Film, The University of Winnipeg. Current studies: Graphic Design and Interactive Media Diploma - Toronto Film School.

ET CETERA Christine is a past Jean Murray - Moray Sinclair Theatre Scholarship recipient and is thrilled to be collaborating with Royal MTC this season. A huge thank you to her family and friends for their constant support and generosity.



Joyce Licup
Assistant Set Designer

ROYAL MTC Assistant Set Designer: *Burning Mom*. Apprentice Set Designer: *Tiny Plays*, *Big Ideas*. 2020/21 National Mentorship Program.

OTHER THEATRE Assistant Set Designer: *A Midsummer Night's Dream* (U of W); *Shakespeare's Will* (SIR). Set Designer: *Middletown* (U of W); *Bastard* (OFUR); *None of This is Happening* (TPM).

TRAINING Graduate of the University of Winnipeg with a BA in Theatre: Design.

ET CETERA Thank you to Theatre Projects Manitoba and Royal MTC for this opportunity and thanks to everyone who has been supporting me!



Anika Binding
Assistant Lighting Designer

ROYAL MTC First engagement.

OTHER THEATRE Lighting Designer: *From Up Here* (U of W). Costume Designer: *Stupid Fucking Bird* (U of W). Stage Management: *Scenes from Love and Information* (U of W). Assistant Lighting & Set Designer: *The Prom* (Dry Cold). Upcoming: Stage Management for *Something Rotten!* (MTYP).

TRAINING BA Hons. in Theatre and Film from the University of Winnipeg, with specializations in Design, Stage Management & Production, and Directing.

ET CETERA Anika would like to thank Theatre Projects Manitoba and Royal MTC for this opportunity. She also thanks her family, friends and teachers at the University of Winnipeg for their endless support.

Dana Tanner-Kennedy
Production Dramaturg

ROYAL MTC First engagement.

OTHER THEATRE *The Soldier's Tale* (Carnegie Hall, NY); *Hamlet* (Yale Repertory Theatre, CT); *Urge for Going* (The Public Theater, NY); *Suddenly Last Summer*, *Loot*, *Nora*, *Appropriate*, *Don Juan* (Westport Country Playhouse, CT). *Indecent*, *The Devils*, *Revolt. She Said. Revolt again.*, *The Lower Depths*, *Iphigenia at Aulis*, *A Dream Play* (University of Alberta Studio Theatre).

TRAINING/TEACHING Dana is a scholar, dramaturg and educator who teaches at the University of Alberta and St. Joseph's College and serves on the faculty of the Summer Conservatory for Actors at Yale University. She is a graduate of the Yale School of Drama, where she earned her MFA and her Doctor of Fine Arts in Dramaturgy and Dramatic Criticism.

For a complete list of theatre abbreviations, please refer to legend on page 4

Jasmine Hopfe

Assistant Production Dramaturg

ROYAL MTC First engagement.

OTHER THEATRE Jasmine Hopfe (she/they) is a queer, Egyptian/European multi-disciplinary theatre artist and producer. Her theatrical practice includes performance, writing, directing, producing and more. Recent credits: Ann in *All My Sons* (Walterdale Theatre); Cassandra in *Stir-Crazy* (Edmonton Fringe); Elliot in *Brick Shithouse* (Found Festival); Raymonde in *A Flea in Her Ear* (University of Alberta); Assistant Director and Stage Manager of *Hacking and Slashing* (Edmonton Fringe).

TRAINING Recent graduate from the University of Alberta with a Bachelor of Arts in Drama (Honours) in June 2023.

ET CETERA Jasmine is thrilled to expand their theatrical experience into the wonderful world of dramaturgy. This is their first dramaturgical endeavour, and they could not be more excited to share their learning with the audience of this beautiful play, nor more grateful to Royal MTC and Theatre Projects Manitoba for this opportunity.



Ridge Romanishen

Stage Manager

ROYAL MTC Apprentice Stage Manager: *Sexual Misconduct of the Middle Classes*, *The Three Musketeers*, *Calpurnia*.

OTHER THEATRE *Narnia* (Bad Hats Theatre/MTYP); *A Pickle* (WJT); *The Velveteen Rabbit* (MTYP); *The Marriage of Figaro* (Manitoba Underground Opera); *Dance Spectrum* (RWB School); *In Time* (TPM); *Trigger Warning: Cassandra* (Sick + Twisted); *Shakespeare's Will* (SIR); *Narrow Bridge* (WJT); *The Golem's Mighty Swing*

(WJT/Outside The March); *Kiss of the Spider Woman* (Dry Cold); *A Midsummer Night's Dream*, *Arcadia* (U of W).

TRAINING Graduate of the University of Winnipeg's Theatre and Film Program with Honours in Stage Management.

ET CETERA Ridge is thrilled to be back working with Royal MTC this season. He would like to thank all his friends, family and "Lovey" for their support and, of course, the fabulous folks at Royal MTC and Theatre Projects Manitoba for this amazing opportunity!



Jazz Marcelino

Apprentice Stage Manager

ROYAL MTC *Clue*, *Burning Mom*, *Assassinating Thomson* (tour).

OTHER THEATRE Apprenticeships: *RENT*, *The Hockey Sweater: A Musical*, *MA-BUHAY! Filipinos Singing for Their Lives - A New Musical* (Rainbow); *La Cenerentola* (MB Opera). Stage Manager: *Shrek Jr: The Musical* (MTYP); *Belt Fest 2* (Belt Fest/UNIT Productions); *Othello* (Beau/Raven/Echo); *Agency* (Sarasvati); *Stephen Hopwood Is Not Dead* (Penguin Production); *True Blue* (Cagey Productions).

FILM Second Wardrobe Assistant: *Alter Boys* (Farpoint Films).

TRAINING Graduate of University of Winnipeg - Bachelor of Arts in Production and Stage Management in Theatre and Film Production; Creative Manitoba Mentorship with Kathryn Ball. Quantum Arts Film & TV Acting with Ray Strachan.

ET CETERA Thanks to my family, friends and mentors for their ongoing support. ●

Jones & Company

— WINE MERCHANTS —



Shop Local, Globally.

1616 St. Mary's Road Winnipeg, Manitoba
204.948.WINE (9463) | Text a Somm: 204.400.0499
joneswines.com | wine@joneswines.com



WE TRIED

We really did. We tried to photograph a pint of our refreshing, award-winning beer but everytime we turned our heads, it was gone.

It's just that good.

You might have better luck. Pick some up in the lobby, your favourite beer store, Liquor Marts and in our very own taproom.

330-830 King Edward Street
torquebrewing.beer

SUPPORTERS

Many thanks to our donors
who made a gift between
Oct 1, 2022 and Dec 5, 2023

DIRECTOR'S CIRCLE

\$10,000+

Gail Asper, OC, OM, LLD* &
Michael Paterson
Deborah Gray
June & Bob Jackson Memorial Fund
for the Performing Arts – The
Winnipeg Foundation
Ken & Sharon Mould
Todd & Kellie Tanchak

\$6,500-9,999

Houston Family of Bradwardine
Fund – The Winnipeg Foundation
Ted & Ruth Northam
Mr. Leslie Taylor

\$4,000-6,499

Pauline Braun – in memory of Duane
Braun*
David Christianson & Vera
Steinberger
Susan Glass & Arni Thorsteinson
Rita Gunn* & Gregory Mason
Camilla Holland* & Colin Viebrock*
Diane & Dave Johnston
Elizabeth Marr & Nick Slonosky
Gerry & Barb Price
Hartley & Heather Richardson
The Jim & Janice Tennant Foundation
Dr. Marcel Van Woensel
Denise Waldman

\$2,000-3,999

Dr. J Baluta & Ms. O. Kandia
Phil & Kanning Burns
David & Lianne Carefoot
David* & Barb Christie
Nancy Cipryk
Heather Clarke
Gerry* & Chris Couture
Kerry Dangerfield**
Isaac Ben Diamond
Dr. Lawrence & Ms. Brenda Ellerby
Tony* & Jennifer Fletcher*
Linda Hamilton & Grange Morrow*
Sharon Hamilton*
The Jessiman Foundation
Myron Klysh
Dr. P. Kmet & Mr. B. Roslycky
Donna & Dave* Lalama
Katrina Lee-Kwen & Jeff Neufeld
Brendan M*Keen**

Leigh Murphy – in memory of Liam
Murphy*
Dr. Harold Nyhof & Ms. Jo-Anne Lutz
Francis Pollard
Drs. Bill Pope & Elizabeth Tippet
Pope Fund – The Winnipeg
Foundation
Sanford & Deborah Riley
Bill & Laurie* Speers
Maitland & Pat Sundmark
Kelly Thornton* & Josep
Seras-Gubert*
Jeremy Trickett & Brandon Barnes
Trickett*
Helga Van Iderstine
Scott & Sonya Wright Fund
2 Anonymous

\$1,200-1,999

Edward* & Jaime Acuna*
Craig McIntosh & Lorraine Beck Fund
Todd Bourcier
Sheldon & Penny Bowles
Doneta Brotchie, CM* & Harry
Brotchie*
Chambers Family*
Haderra & Mark Chisick
Jan & Kevin Coates*
Hugh Conacher*
Corinne Ratuski & Brad Favel*
Sylvia Flam*
Katherine Fox**
Susan* & Ab Freig*
John* & Nicola Guttormson*
Barbara Hamilton
Gregg & Mary Hanson
Vivian Hilder-Skward & David Skward
– in memory of Mike Skward*
Shawn Hughes & Bruno Koehn*
Katie Inverarity**
Danielle Jobb & Brendan Roddy
Lisa Johnston*
Hon. William Johnston
Mrs. Donna Korban & Family
Serena Helen Kraayeveld Fund –
The Winnipeg Foundation
David* & Ellen Kroft*
J. Lamothe*
Rick Lee & Laurie Shapiro
Peter & Karen Leipsic
Andrea Lochhead*
Gail Loewen
Logan Family Fund
Mark & Gloria Mancini*
Gerard Matte & Lydia Surasky-Matte
Jim* & Penny McLandress*
Melissa Novocosky**
Wayne & Linda Paquin
Damian Perron
K. Heather Power & Harold Klause*
Jocelyne Prefontaine**
Lawrence Prout* & Lisa Gardewine*

Margaret Redmond* & Greg Gillis*
Nancy & Loren* Remillard
Sudhir Sandhu**
Ken & Susan* Skinner*
Donald Smith*
Kevin Hines & Shelly Smith-Hines*
Joan Stephens – in memory of
Annice Stephens*
Sasha & Josh Thiem*
Geeta* & Michael Tucker*
Vicki Verville*
Grant & Trish Wainikka
Winnipeg Theatre Awards
Rick & Claire* Workman
Nicole Zajac*
2 Anonymous

COMPANY CIRCLE

\$600-1,199

Robert & Ina Abra Family Fund –
The Winnipeg Foundation
Margaret Astwood
Peter Attwood
Janet & Marcel Belanger
Ryan Bernier
Bruce & Shelley Bertrand-Meadows
Cathie & Brian Bowerman
Pam & Andrew Cooke
D. J. Cowan
Verna Danylchuk
J. Davidson*
Emeric & Karen Duha
Helene Dyck
Brad & Jenn Gesell
Tyler Gompf
Charles Henaire
Marilyn & Helios Hernandez
N & L Holliday
JWTAM Medical Corporation
Gestur & Elizabeth Kristjanson
The Honourable Guy J. Kroft &
Hester Kroft*
Ian & Nicki LeGrand*
Tim Preston & Dave Ling
Teresa Lopata & Bruce Wagg
Brian & Christie Lysack*
Peter & Maureen Macdonald
Garry Markham
Carol & Barry* McArton
Campbell & Lorraine McIntyre
Terri & Jim Mc Kerchar*
Ron McKinnon / Peggy Barker*
Erin Meyer
Carolyn Garlich & Peter Miller Gift
Fund
Brendan Mitchell
Jennifer Moncrieff
Marika Nerbas
Vivienne Nickerson

*Current Royal MTC Board of Trustees/Advisory Board members †Current Royal MTC staff *Monthly Donors/Drama Club †Fondly Remembered

SUPPORTERS

Tracey Novak
Richard & Bonnie Olfert
Ivan & Cathy Oresnik*
Cameron & Carole Osler
Donna Plant
Lousie & Ruth
Iris Reimer
David & Joan Rew
Henriette Ricou & Jure Manfreda
Tony Robbins
Barbara Scheuneman
In memory of Sybil Shack for
the benefit of MTC - Jewish
Foundation of Manitoba
Carol & Ron Slater Fund - Jewish
Foundation of Manitoba
Deborah Spracklin
Karen Stach
Scott Stewart
Lorne Sunley
Todd & Kellie Tanchak
Susan Taylor
Dr. Peter Triggs*
Rachel Waenink
Murray & Nancy Wiegand
Kathy Gough & Tim Wildman
Margaret Wollner*
6 Anonymous

\$250-599

Pat & Darrell Adams*
Dr. Liz Adkins

Glen Agar & Pam Reimer
Dawn Andersen
Jay & Judy Anderson
Elizabeth B. Armytage Fund - The
Winnipeg Foundation
Brenna Bacchus*
Peter Bagot
Glenn & Norma Baldwin
Ivan Banias
Dr. Corinne Barrett DeWiele &
V. Michael DeWiele
Kathrine Basarab
Larry Beeston & Anna Sikora
Bruce & Joyce Berry
Susan & Edwin Bethune
Helga & Gerhard Bock
Lilian Bonin & Daniel P Levin
John & Marilyn Bourbonnais
Dr. Elizabeth Boustcha
The Hon. Patricia Bovey
Ron & Joan Boyd*
M. Braid
Billy Brodovsky & Libby Yager*
Sheila & David Brodovsky
Brian Brown
Ellen & George Bruce
Donna Byrne
Ron Maier & Colleen Cariou
A R Carr
Leesa Carter & Colin Morrison
Cheryl Chaban
Rosemary Chapman

Lawrie & Bea Cherniack
Gertie Chipka
Roberta Christianson
Nancy Chuback
Ken Clark & Pamela Lockman
Agnes & John K. Collins
Josie Cosyns
Jim & Gwen Court
Christopher Courtney
Robert Coutts*
Matthew Cztery & Dr. Avery Miller
Ashleigh Czynryj
J. V. Dale
Werner & Judy Danchura
Doug De Graff
Andre & Diane de Rocquigny
Blair Doell
Rita Dornn
Craig & Claudette Dunn
H. Dyck
Glen* & Joan Dyrda
Robert & Florence Eastwood
John Edwards & Wendy Stelco
Ruth & Ernest Epp
Fran Falzarano
Kate Hodgert-Fennell*
Doug & Pat Finkbeiner
Maureen Flaherty & Fred Beckwith
Andrea Forbes-Avila*
Elroy Friesen
Pamela & Kevin Friesen
Felicia & Trevor Frost



Your seat awaits.

Will you consider a gift to Royal MTC in your will?

Is Royal MTC already named in your will?

**We'd love to honour you as a member of
the Royal MTC Founders' Circle**

For more information on Legacy Giving contact:
Brendan McKeen 204 954 6412 or bmckeen@royalmtc.ca

ROYAL
MTC
MANITOBA THEATRE CENTRE

Scan here for
more info



SUPPORTERS

Colleen & Dan Furlan[†]
 Daniel Gagnon
 Lynne & Lindsay Gauld[†]
 Trish Gehle-Preston
 Denise & Ron George
 Heather Gillander
 Serky & Ben Goldberg
 Jan Gordon[†]
 Kayla Gordon & Art Maister
 Blair & Amanda Graham
 M. Gray
 Debbie Grenier, KPMG LLP
 Graham Hiagh
 Thomas & Nadia Hall
 Noella & Patrick[†] Hanan[†]
 Doug & Sylvia Hannah
 Brian & Dawn Hanson - in memory of
 our Daughter, Kristin Dawn Hanson
 Linda Harlos & Adrian Wildsmith
 Kathryn & Wayne Harrison
 Valerie & Robert Hazelton
 Frank & Sue Hechter[†]
 Marilyn Hendzel[†]
 Rodney Hick & Tracey Jackson
 Judith & Eric Hinton
 Ted & Cathy Hlynsky
 Lenore & John Hodge
 Jennie Hogan
 Michael & Crystal Hollas[†]
 Ken Houssin[†]
 Lorne Hurst & Elly Hoogterp
 Dan & Karen Ilchyna
 Sylvia Jansen
 Gerald Jewers
 Crystal & Gunter Jochum
 Katherine Clements & James Tam
 Marilyn & Sheldon Joyal
 Joanne & Rod Kamins
 Sheryl Kapit & Aaron London[†]
 Sandy & Joan Kellett
 Peter Kingsley, K.C.
 Betty Klassen
 Julie Ann Kniskern
 Denise & David Koss
 Carol Campbell & Andy Krentz
 Howard & Jane Kroeger
 Steven & Lisa Kroft
 Randie & Jan Kushnier
 Laurie Lam & Larry Desrochers
 Cheryl Langer
 Barbara Latocki
 Desiree Lavallee^{††}
 John & Heather Lea
 E. Kerrie Halprin & Richard Leipsic
 John & Roberta Lewis
 Pat & Jim Ludwig
 Tom Lussier
 Dr. Ted & Harriet Lyons
 MacDonald/Cageorge Fund - The
 Winnipeg Foundation
 Jim MacGregor & Christine Halma
 Judith Manning

John & Helen Marakovits
 Liz Martin[†]
 Monique Marynard
 Jim & Lynne McClelland
 Marlene & Ian McKay
 Greg & Gloria McLaren
 John & Carolynne McLure Fund -
 The Winnipeg Foundation
 Donald G. McNabb
 Melissa McRae
 Albert & Judith Metcalfe[†]
 Susie Miclash
 Irene Miller & the late Claire Miller
 Catherine Lambeth & Grant Mitchell
 Sharon & Michael Moffatt
 Dr. Catherine Moltzan & Paul Brault
 Vera Moroz
 Sagan Morrow[†]
 Cathy Moser & Jeff Itzkow
 Suzanne & Kenneth Munroe
 Charlotte Murrell
 Brad Nance
 D. & G. Nytepchuk
 Joanne Olchowecki
 Norma Anne Padilla
 Jean-Pierre Parenty & Michelle Smith
 Linda Pashniuk
 Sandra Paterson-Greene & Russ
 Greene
 Peter & Anita Pelech
 Maryam & Izzy Peltz Fund - Jewish
 Foundation of Manitoba
 Bonnie Penno[†]
 Linda & Rob Pettit
 Rick Pinchin
 Jocelyn Pitsch
 Ian & Ann-Margret Plummer
 Leonard & Ruth Podheiser & The
 Podheiser Family Foundation
 Beth Pollard
 Maureen Prendiville & Paul Jensen
 Jeremy Rampton
 Carole Rankin[†]
 Nalini Reddy[†]
 Lorraine & Ernest Reinfort
 Joan Richardson
 Laura Richman
 Jean Riggall[†]
 Andrea & Michael Robertson[†]
 Deborah & Neil Rostkowski
 Debbie Roy
 Emile Samuels
 Cathy & Paul Samyn
 Onnolee Scharf[†]
 Roland Schneider
 J & S Schroder
 Renate & Bill Schulz
 Harald & Vicki Schulz
 Faye Scott
 Darcia & Gary Senft
 Jewish Foundation of Manitoba - in
 memory of Sybil Shack for the
 benefit of MTC

Marsha Sheppard
 Blake Shiara
 Shayna & Merrill Shulman
 Cheryl & Gordon Siemens
 Dr. Elinor Simons
 Ms. Judy Nichol & Dr. Jim Skinner
 Lynne Skromeda
 Al[†] & Virginia Snyder
 Maddi Soubry
 Christine Soubry
 Peter & Geri Spencer
 Dayna & Charles Spiring
 Jodee Stewart
 Jonathan Strauss
 Eleanor Suderman
 Mary Ann Supleve
 Ray & Fenella Temmerman
 Leah R. Janzen & Ian R. Thomson
 Malcolm & Shirley Tinsley
 Douglas & Deanna Tkatch
 Jen & Kevin Tomanek
 Gord & Lorena Trann
 B. Baydock & W. Tretiak
 Grant Tweed
 Strang/van Ineveld Family
 Dr. & Mrs. M. B. Vodrey
 Grant Wainikka
 Stirling Walkes
 Tamara & John Wells
 Michael & Lydia West
 Norma & Ron Westcott
 John T. & Justina Wiens
 Lionel & Lorraine Wiens
 Catherine Wilkie
 Leslie Wilson
 Reed & Arla Winstone
 Deborah A. Wolfe
 Adele & Arthur Wortzman
 Margaret & Paul Wright
 Allana & Eden Wyness[†]
 A Young
 Dr. Dorothy Y. Young
 Olia & Roman Zubach
 Anonymos[†]
 16 Anonymous

\$150-249

Robert & Patricia Adamson
 Jay & Judy Anderson
 Lynne M Arnason
 Dennis & Elaine Schultz
 Jennifer & Scott Ash
 Nadine Audet[†]
 Ian Backus
 Zaz Bajon & Patricia Hunter
 Richard & Nancy Ball
 Earl & Cheryl Barish
 Richard & Josie Bartlinski
 Mary Barwinsky
 Karen & John Bate
 James & Dawn-Lynne Bedford
 Susan & George Benias

^{*}Current Royal MTC Board of Trustees/Advisory Board members

[†]Current Royal MTC staff

^{††}Monthly Donors/Drama Club

SUPPORTERS

Trish Bergal
Trust Beta
Val & Blair Bingeman
Joan Blight
David & Pamela Bolton
Bruce & Karen Boyd
Sandra Brabant
Jackie & Steve Broda-Milian
Gerald R. Brown
Carol Budnick
Linda Bulka
John Burrows
Corinne Campbell
Jody Chalmers & Monique Perro*
Doug & Monica Chapman
Norma & Victor Chernick
Shelley Chochinov
Dr. T. I. Choptiany
Katherine Cobor
David & Kathy Connor
Sarah Corley
R. Lynn Craton
Drs. Kristen Creek & Josh Manusov
Margaret Cuddy
Georges Dampousse
Linda Daniels
Chris Darazi*
Sheila Domke & Stephen Ross
Rob Dryden
John & Ada Ducas
Heather Goulden & Jay Duncan
Roberta Dyck
Tim Edginton & Joan Hardy
Greg Edmond & Irene
Groot-Koerkamp
John & Marilyn Ekins
Charlotte Enns & Greg Evans
Ken & Lesley Enns
Anthony Esposito
Jemara Fay*
Marion Fellingner
Linda Ferguson
Nelma Fetterman
Gayle Fischer
Bev Fitzpatrick
Nancy Flintoft & John McWilliams
Lawrence Foster*
Donna Frame*
Christine M Freeman
Paul Daeninck & Monica Furer
Gloria & Rick Gallant
William S. Gardner
Helen Garrod
Jane Park & Blair Geisel
Patti & Rick Gilhuly
Barbara & David Goldenberg
John & Marcia Gordon
Jennifer Graham
Linda Graham
Harry & Cheryl Green
Abigail Grieder
Sandra Guadagni

Joan Hanton*
Don Hardy
Joanne Harris
Hans & Sandra Hasenack
Shellie & Grant Hatch*
Elizabeth Hatherell
Kyle Hendin
Karen Herd
Mary & David Hickling
Rob & Jen Hochkievich*
Mary Hodge
Ramona Hodges
Tom & Dianne Hodgson
Betty Hoffmann
Keith & Karen Horn
Colleen Hrabii**
Lisa Hunt & Hugh Wichenko*
Jean Hyrich
G. C. Irwin-Kilfoyle
Stu & Alice Iverson
Dave & Lesia Johns
Tiffany Johnson-Sheldon
Robert & Karen Johnston
Tannis & Owen Johnston
Michael Joyal, esq.*
J.H. Kaminsky
Sherry Kaniuga*
Penny & Brian Kelly
Vernon & Roselin Klassen
Ms. Julie Koehn
In memory of my Spouse Valerie
Kohut - Peter Kohut
Lesley Koven & Eric Thomas
Lorraine Kraichy*
Robert Lafond
Teena Laird
Dale Lakevold
Lisa & Ted Landrum
Bryen Lebar & Patricia Sauder*
Ellen & Stewart Leibl
Saul & Kathy Leibl
Tim & Kate Letkemann*
Carol & Clifford Levi
Wendell Lind
Stan & Susan Lipnowski
Judy & Eric Lister
John & Joy Loewen
Sarah Luby
Israel & Maylene Ludwig
Carole Lupkowski
Carol Ann Lussier - in memory of
Joanne
Wally MacMartin
Dale & Gina Marciski
Elaine & Neil Margolis
Ilse Marotta
Lynne Martin* - in memory of Omar
Martin
Agatha Massey
Cheryl & Eric Matheson
Barbara McCandless
Barry McNabb

Catarina Mello Schultz*
Barb Melnychuk
Loretta Merriam
Constantina Metaxas
Jim & Karren Middagh
Gail Mildren - in memory of Walter
A. Mildren
Celoris Miller
Cressida Mills
Adriana Mingo
Dr. & Mrs. M. Mollot
Marc Monnin & Donna Miller
Tom & Susan Mooney
Allison Moore*
Marlene Mortimer
Susan Munroe
B. Nagamori
Rhea Nelken
Leslie Nichol
Tom Nowicki
Irene Onuch
R. Ooto
Doris Mae Oulton & Cam Mackie
Sonjia Pasiechnik
Myron Pawlowsky & Susan Boulter
Jo-Anne & Harvey Peltz
Harold & Ingrid Peters Fransen
Donald & Elaine Peters
Carolyn Porhownik
Nancy & Brett Porth
Vivian E. Rachlis
Roberta & Rick Rackal
John & Marilyn Rae
Dr. R. & Audrey Ramchandarr
Jim & Kathy Ranick*
Linda Ratynski
Lucas Redekop
Ted & Marilyn Redekop
Pat & Bill Reid
Cheryl Reid
Art Reimer
Joy Reimer
Shelley Rennie
Marilyn Robbins
Cindy Rodych
Gail MacAulay & Kevin Rollason
Jay Ross
Pat & Michelle Rowan
Michael T. Ruta
David & Tammie Sainsbury
Rodrigo Sanches Cunha*
Heather Sandilands*
Terry Sargeant & Margaret Haney
Greg Sexsmith & Joni Lavender
Sexsmith*
D. L. & C. Sexton
Sydney Shore & Wayne Sharpe
Tania Sigurdson
Edith Simpson
Linda Simpson
Earl Slimmon
David Smith

*Current Royal MTC Board of Trustees/Advisory Board members

*Current Royal MTC staff

*Monthly Donors/Drama Club

SUPPORTERS

Lillian Smith
 Muriel Smith
 Jon Sorokowski
 Maria Steeds
 Darlene Stepanik
 Kim Stephens
 Lisa Stiver
 Heidi Struck*
 Shirley & Tom Strutt
 Shelley & Jeff Tallin
 Mala Teeluck*
 Greg Tottle
 Marilyn Trepel
 Mona Turcotte
 Eric Turner*
 Chris Turyk & Bryce Weedmark*
 Robert Tyler & Laurel Hammond-Tyler
 Brent & Jocelyn VanKoughnet
 Nancy Vincent
 Helmut & Gwen Waedt
 Dorothy Walker
 J. & A. Walli
 Jane & Don Walters*
 Paul & Laura Walton*
 Robert & Sherilyn Ward
 Peter & Joan Washchyshyn
 Lois & Henry Wedel
 Hymie & Shaaron Weinstein
 Mary Agnes Welch*
 Alys-Lynne & Steve West
 Al & Pat Wherrett*
 Florence & Donald Whitmore
 Theresa Wiktorski
 Dennis & Gustine Wilton
 Robyn Wolfe
 James Wood*
 26 Anonymous

SPONSORS

300 Main
 Air Canada
 The Asper Family Foundation
 The Gail Asper Family Foundation
 The Asper Foundation
 Bell MTS
 Birchwood Lexus
 BMO Financial Group
 Bonaventure Travel Inc.
 Calm Air
 Canada Life
 Culligan Water
 Dycorn Direct Mail Services
 Esdale Printing Co. Ltd.
 Fairmont Winnipeg
 Fillmore Riley LLP
 Friesens Corporation
 GFL Environmental Inc.
 HUB International
 IG Wealth Management

Jones & Co Wine Merchants
 Lawton Partners
 Soirée Event Planning
 Manitoba Bar Association
 Liquor Mart
 Manitoba Public Insurance
 McDiarmid Flowers
 McNally Robinson Booksellers
 POS Systems
 RBC Foundation
 RE/MAX
 Red River Co-operative Ltd.
 Relish New Brand Experience
 Richardson Foundation
 Sleeman Breweries Ltd.
 Stantec Consulting Ltd.
 Tanchak Wealth Management Group
 Taylor McCaffrey LLP
 TD Bank Group
 The Thomas Sill Foundation
 Torque Brewing
 University of Manitoba - Faculty
 of Law
 Wawanesa Insurance
 Winnipeg Free Press

CORPORATE DIRECTOR'S CIRCLE

\$25,000+

Johnston Group Inc.
 Richardson Foundation

\$5,000-9,999

Cambrian Credit Union
 Maxim Truck & Trailer - Doug
 Harvey & Jan Shute

\$1,200-2,999

Arthur J. Gallagher Insurance and
 Risk Management
 Domo Gasoline Corporation Ltd. -
 Kate M. Everett, President
 Gendis Inc.
 IATSE Local 856
 Manitoba's Credit Unions
 MMP Architects
 Pollard Banknote Limited
 PRA Inc.

CORPORATE COMPANY CIRCLE

\$600-1,199

Astroid Management Ltd.
 Mid West Packaging Limited
 Premier Printing Ltd.

\$300-599

MCW/AGE Consulting Professional
 Engineers
 Winnipeg Building & Decorating Ltd.

\$150-299

Beyond Referrals
 InterGroup Consultants Ltd.
 Patill/St. James Insurance

FOUNDERS' CIRCLE

Wayne & Lee Anderson
 Gail Asper, OC, OM, LLD*
 Zdzislaw (Zaz) Bajon & Patricia Hunter
 Marjorie & Morley[§] Blankstein
 Duane[§] & Pauline Braun
 Doneta Brotchie, CM* &
 Harry Brotchie
 Ken[§] & Denise Brown
 David & Lianne Carefoot
 Len & Heather Cariou
 Terri Cherniack & Steven Schipper,
 CM, OM
 Jennifer Cheslock & George Buri
 David Christianson & Vera
 Steinberger
 David* & Barb Christie
 Gerry* & Chris Couture
 D. J. Cowan
 Hugh B. Cowan
 Kerry Dangerfield*
 Laurie Lam & Larry Desrochers
 Glen* & Joan Dyrda
 Robert & Florence Eastwood
 Don & Elfie Elias
 Bill[§] & Gayle Fischer
 Anthony* & Jennifer Fletcher
 Jack Fraser
 James Gibbs[§]
 Sandy & Rheel Gousseau
 Rita Gunn[§] & Gregory Mason
 John* & Nicola Guttormson
 Ahava Halpern & Frank Lavitt
 Linda Hamilton & Grange Morrow
 Gary Hannaford* & Cathy Rushton
 Ted[§] & Gail Hechter
 Elaine Heinicke[§]
 Shawn Hughes & Bruno Koehn
 June[§] & Bob Jackson Fund for the
 Performing Arts
 Maureen E. Jay
 Andrew & Wendy Jensen
 David & Diane Johnston
 Dr. Leonard & Hope[§] Kahane
 Janis Kaminsky
 Jason Kasper
 John Kearsey
 Gordon & Anne Keatch[§]

*Current Royal MTC Board of Trustees/Advisory Board members *Current Royal MTC staff *Monthly Donors/Drama Club [§]Fondly Remembered
 If you have remembered Royal MTC in your will, please let us know.

SUPPORTERS

Rob Kennedy & Claudette Leclerc
 Serena Helen Kraayeveld
 Leona J. MacDonald
 Cheryl Johansson⁵ & Michael
 Mainman
 Mark & Gloria Mancini
 Virginia Martin
 Peggy Barker & Ron McKinnon
 Jim* & Penny McLandress
 Barb Melnychuk
 Bob & Pat Migliore
 Jeffrey Morton*
 Ken & Sharon Mould
 Dr. Liam Murphy⁵
 Robb & Heather Paterson
 Chris Pearce
 Scott Penner
 Gina & John* C. Petersmeyer
 Drs. Bill Pope & Elizabeth
 Tippett-Pope
 K. Heather Power & Harold Klause
 Margaret Redmond* & Greg Gillis
 Edward Fisher & Lyse Rémillard
 Joan D. Richardson
 Jean Riggall
 Michelle Rowan
 Michael T. Ruta
 Sharon Ryman
 Susan Skinner*
 Kevin Hines & Shelly Smith-Hines
 Bill & Laurie* Speers
 Deborah Spracklin
 Joan Stephens
 Joanne Tait
 Suzanne Ullyot
 Lionel & Lorraine Wiens
 Margaret⁵ & Alfred Wikjord
 Richard L. Yaffe* & John A. Statham⁵
 Brenda Zaporzan⁹
 2 Anonymous

TRIBUTE GIFTS

**In memory of my treasured brother,
 John**
 Alex Todd

**In memory of Jack Armstrong &
 Doris Quinn**
 Craig MacKenzie

**In memory of Dimitra & Nick
 Diamantakos**
 Friends

In memory of Doreen Reimer
 Joy Reimer

ENDOWMENT - STEVEN SCHIPPER FUND

Many thanks to the generosity of our Endowment Fund donors who gave a gift or fulfilled a pledge payment between Dec 1, 2022 and Nov 30, 2023. Amounts listed are cumulative.

\$5,000,000+

Government of Canada/
 Gouvernement du Canada
 Canadian Heritage/Patrimoine
 canadien

\$250,000-499,999

Gail Asper, OC, OM, LLD* &
 Michael Paterson

\$100,000-249,999

The Leigh & Liam Murphy Family Fund
 Henriette Ricou & Jure Manfreda

\$25,000-49,999

Susan Glass & Arni Thorsteinson
 J.K. May Investments Ltd.
 Cameron & Carole Osler
 Terracon Development Ltd.

\$10,000-24,999

Don & Sheila Katz
 Susan & Keith Knox
 Garry Markham
 Norma Anne Padilla
 L. Blair Philpott & Tom Kynman
 George Sigurdson
 Margaret⁵ & Alfred Wikjord

\$5,000-9,999

Margaret Caie
 Ron & Carol Chapman
 Pam & Andrew Cooke
 Gordon & Sherratt Moffatt
 Gina O'Connor & John C.
 Petersmeyer*
 Barbara Scheuneman
 Dr. Dorothy Y. Young
 Anonymous

\$2,500-4,999

Don & Cheryl Breakey
 Sheila & David Brodovsky
 Rita & Don Campbell
 Jan & Kevin Coates
 Roberta Dyck

Michael & Lynn Evans
 John & Margaret Graham
 Carol Campbell & Andy Krentz
 Elaine Toms

\$1,000-2,499

Ron & Joan Boyd
 Emily Burt
 Art & Donna Chow
 Agnes & John K. Collins
 Jeremy & Maureen Gordon
 Teresa A. Hay
 Jordan Janisse & Teresa Cooper
 Lynne Jentsch
 Barbara Latocki
 Barbara Main
 Gerry Matte & Lydia Surasky-Matte
 Anthony & Joyce McWha
 Estelle Meyers
 Paul & Elaine Neelon
 Joel Novek - in honour of Mr. & Mrs.
 Bob Martin
 Myron Pawlowsky & Susan Boulter
 Edna Poulter
 W. & N. Rennie
 Jim & Susan Shaw
 Beverley Vane & Bill Shepherd
 Howie & Sue Simpson
 Deborah Spracklin
 Anonymous

\$500-999

Peggy Bainard Acheson - in memory
 of Judy Acheson
 Mr. & Mrs. Fred Kasil
 Dr. Shelley Mahoney
 Bob & Pat Migliore
 Marlene Mortimer
 Ivor & Lorna Schledewitz
 Gabor Vamos & Brenda Silver

UP TO \$499

Ingrid Bolbecher
 Allan & Evelyn Hardy
 Nancy Latocki
 F. Lemieux
 Jacqueline L. Melnyk
 Edward Fisher & Lyse Rémillard
 Elaine Walker
 2 Anonymous

**MANY THANKS TO
 OUR VOLUNTEERS!**

*Current Royal MTC Board of Trustees/Advisory Board members †Current Royal MTC staff *Monthly Donors/Drama Club †Fondly Remembered
 If you have remembered Royal MTC in your will, please let us know.

SUPPORTING PARTNERS

CORE FUNDERS



EXCLUSIVE PRODUCTION SUPPORTER



TOM HENDRY WAREHOUSE SEASON SPONSOR



OPENING NIGHT SPONSOR



JOHN HIRSCH MAINSTAGE PRODUCTION SPONSORS



TOM HENDRY WAREHOUSE PRODUCTION SPONSOR



JOHN HIRSCH MAINSTAGE PERFORMANCE SPONSORS



THEATRE FOR YOUNG AUDIENCES



NATIONAL MENTORSHIP PROGRAM



PIMOOTAYOWIN CREATORS CIRCLE



REGIONAL TOUR



UNDERSTUDIES



SUPPORTING PARTNERS

BLACK & WHITE BALL

SILVER SPONSOR



SILVER SPONSOR



AUCTION SPONSOR



COCKTAIL SPONSOR



FILLMORE RILEY VACATION RAFFLE SPONSORS

FillmoreRiley



AIR CANADA

VENUE SPONSOR



WINE SPONSOR



LAWYERS PLAY



THE MANITOBA BAR ASSOCIATION
L'ASSOCIATION DU BARREAU DU MANITOBA
A Branch of the Canadian Bar Association
Une division de l'Association du Barreau canadien



DESIGN SPONSOR



CAPITAL ASSISTANCE



SEASON MEDIA SPONSOR



SUPPORTING SPONSORS



WINNIPEG FRINGE THEATRE FESTIVAL



BEHIND THE SCENES

BOARD OF TRUSTEES

HONORARY MEMBERS

Her Honour, Lt. Governor Anita R. Neville
The Honourable Wab Kinew, Premier of Manitoba
His Worship, Mayor Scott Gillingham

EXECUTIVE OFFICERS

Laurie Speers, Chair
Edward Acuna, Chair-Elect & Nominating Committee Chair
Susan Freig, Secretary
David Kroft, Governance & Strategic Planning Committee Chair
Nalini Reddy, Inclusion, Diversity, Equity & Accessibility Committee Chair
Geeta Tucker, Treasurer & Organizational Performance Committee Chair
Claire Workman, Resource Development Committee Chair

TRUSTEES

Emily Burt
Brad Favel
Katherine Fox
David Lalama
Andrea Lochhead
Linda McGarva-Cohen
Jocelyne Prefontaine
Loren Remillard
Sudhir Sandhu
Jennifer Tesoro

ADVISORY COUNCIL

John Guttormson - Chair
Gail Asper
Doneta Brothie, CM
Angus Campbell
David Christie, Chair
Gerry Couture
Kerry Dangerfield
Hy Dashevsky
Glen Dryda, FCA
Anthony C. Fletcher
Jean Giguere
Charron Hamilton
Gary Hannaford, FCA
Yvonne Henteleff
Ken Houssin
Colin R. MacArthur, KC
Patrick J. Matthews
Jim McLandress
Jeffrey Morton, FCA
Hon. Jack Murta
Lillian Neaman
John Petersmeyer
Lawrence Prout
Jeff Quinton
Patricia Rabson
Margaret Redmond
Susan Skinner
Al Snyder
Maureen Watchorn

STAFF

ACCOUNTING/FINANCE

Carol Ellis, Director of Finance, CPA, CMA
Kim Friesen, Payroll Administrator
Yvonne O'Connor, Accounts Payable Administrator
Shelley Stroski, Controller

ADMINISTRATION

Kurt Brown, HR Generalist
Camilla Holland, Executive Director
Kathrin Moncaster, IT Manager

ARTISTIC

Katie German, Assistant Program Director, Pimootayowin Creators Circle
Melissa Langdon, Artistic Associate
Isabelle Ly, Producer
Ian Ross, Program Director, Pimootayowin Creators Circle
Kelly Thornton, Artistic Director
Leslie Watson, Company Manager

BOX OFFICE

Colleen Hrabí, Director of Patron Services
Meaghan Fletcher, Box Office Manager
Box Office Representatives: Sharon Bunn, Meagan Chrest, Jane Hunter, Alora Kempthorne, Shayla Meeroff, Daniel Mitchell, Carolin Schroeder, Tatiana Tuazon

CARPENTRY (JOHN HIRSCH MAINSTAGE)

Louis Gagné, Layout Carpenter
Brent Letain, Master Carpenter
Chris Seida, Scenic Carpenter

DEVELOPMENT

Patrick Hanan, Development Database Specialist
Brendan M'Keen, Individual Giving Manager
Melissa Novocosky, Director of Development
Stephanie Porrior, Event Coordinator

FRONT OF HOUSE

Trish Cooper, Warehouse Assistant Front of House Manager
Ntara Curry, Warehouse Front of House Manager
Janice Marple, Volunteer Manager
Alanna McPherson, Mainstage Assistant Front of House Manager
Cole Reuther, Mainstage Assistant Front of House Manager
Betsy Ruck, Mainstage Front of House Manager
Front of House Staff: Renelle Chartier, Maureen Cooper, Ryleen de Vries, Rachael Donald, Matthew Fletcher, Haeln Gebre, John George, Besso Ghassan, Cassidy Groening, Darrah Horobetz, Joanna Houston, Leanne Hykawy, Brooklyn Kilfoyle, Christine Leslie, Kyra Lyle, Kimmy Martin, Ross McMillan, Christina Reid, Coral Ross, Odéah Roy, Cobi Winston

MAINTENANCE

Chris Fletcher, Building Manager
Wesley Leask, Assistant Building Manager

MARKETING & COMMUNICATIONS

Ksenia Broda-Milian, Education and Enrichment Manager
Sue Caughlin, Marketing & Communications Manager
Katie Inverarity, Director of Marketing & Communications
Desiree La Vallee, Ticketing Application Specialist
Savannah Lillies, Marketing & Communications Coordinator
Micah Parkinson, Communications & Social Media Manager

PAINT

Shauna Jones, Assistant Head Scenic Artist
Carla Schroeder, Head Scenic Artist

PRODUCTION

Christine Corthey, Production Associate
Ian Kirk, Production Driver
Jaxun Maron, Assistant Technical Director
Russell Martin, Director of Production
Donnie Osler, Technical Director
Brenda Vaca, Assistant Production Manager

PROPERTIES

Khaeler Bautista, Props Builder
Rachel Baziuk, Props Builder/Buyer
Linda Beech, Props Builder
Zoë Leclerc-Kennedy, Acting Head of Props
Jamie Plummer, Head of Props (on leave)
Ryan Spracklin, Props Builder

STAGE CREW

Chris Coyne, Head of Sound
Kayla McSwain, Head of Wardrobe
Gary Plouffe, House Stage Hand
Claude Robert, Head Electrician
Chris Thomson, Head Carpenter

TOM HENDRY WAREHOUSE

Tim Clark, Head of Sound
Ryan Spracklin, Master Carpenter
Fisher Wohlgebut, Head Electrician

WARDROBE

Thora Lamont, Head of Wardrobe, Cutter
Heather Thorleifson, Associate Head of Wardrobe
Jackie Van Winkle, Head Buyer & Accessories Coordinator

WIGS

Beverly Covert, Head of Wigs/Make-Up

WINNIPEG FRINGE THEATRE FESTIVAL

Chuck McEwen, Executive Producer
Tori Popp, Festival Manager

HONORARY STAFF

Zaz Bajon, General Manager Emeritus
Steven Schipper, CM, OM, Artistic Director Emeritus

ADDITIONAL PRODUCTION STAFF

BEAUTIFUL: THE CAROLE KING MUSICAL

Travis Marszalek, Wig Assistant
Lattisha Penniston, Hair Stylist
Additional staff provided by IATSE Local 63

AMONG MEN

Rudy Wall, 2nd Carpenter
Additional staff provided by IATSE Local 63

BEHIND THE SCENES

BEAUTIFUL: THE CAROLE KING MUSICAL

THE SEGAL CENTRE PRODUCTION STAFF

Marc Laliberté, Director of Production
Sylvin Sévigny, Technical Director, Segal Centre
François Lemieux, Technical Director, Production
Mike Carvalho, Associate Production Manager
Chris Wardell, Head of Lighting
Evan Brown, Head of Sound
Productions Yves Nicol inc., Set Construction
Shopdogs, Set Construction
33 Degrés, Set Construction
Joseph Baron, Carpenter
Steve Schön, Carpenter
Alycia O'Keefe, Carpenter
William Patrick, Scenic Painter
Daniel Barkley, Scenic Painter
Jessica Mensch, Scenic Painter
Fruzsina Lanyi, Props
Karine Cusson, Props
Rachel Quintero Faia, Head Dresser
Elisabeth de Medeiros, Assistant to the Costume Designer / Dresser
Perruques & Co., Wigs
Sarah Tremblay, Wigs

THE SEGAL CENTRE ADMINISTRATION STAFF

Lisa Rubin, Artistic & Executive Director
Jon Rondeau, General Manager
Gabriela Saltiel, Artistic & Executive Associate
Mélanie Thompson, Head of Communications
Laurie Bourgeois, Head of Marketing
Kasia Leskiewicz, Associate Producer
Paul Brian Imperial, Associate Producer
Sean Sandler, Associate Producer
Stephen Maclean Rogers, Company Manager
Rachelle Glait, Segal Casting Associate

AMONG MEN

THEATRE PROJECTS MANITOBA ADMINISTRATION STAFF

Suzie Martin, Artistic Director
Sam McLean, Managing Director
Key Caguioa, Associate Producer
Christine Leslie, Programming & Communications Coordinator
Ian Hodges, Bookkeeper

Act Like a Star!

Everyone at the theatre is part of the show. Yes, even you.

You want to be a star, don't you?

These tips will make you a stand-out performer (in a good way)!

SCENTS AND SENSIBILITY

Many theatre lovers experience adverse medical reactions from scented products. **Please consider others before using scented products.**

PARK YOUR MOBILE DEVICE

We know something interesting is happening on social media. It always is. But your neighbours want to watch the play. **Please turn off all mobile devices.**

THE SOUND OF SILENCE

Our theatre has great acoustics. So **when you're talking during the show, everyone can hear you.** Your neighbours, the ushers and even the actors. We want you to talk about the show but at intermission or after the final bows.

We're always happy to see you at the theatre. Thank you for coming!

INDIVIDUAL GIVING



Matthew Fletcher



Chase Winnicky



Rhea Rodych-Rasidescu
and Tess Bengler

BEAUTIFUL: THE CAROLE KING MUSICAL. PHOTOS BY EMELIA HELLMAN.

“Even if I’m all alone, it’s like I’ve got a friend in the room.” - CAROLE KING

In the pursuit of their dreams, young artists often face numerous obstacles and financial challenges. Carole King forged her path to stardom using her incredible talent and fearless tenacity. Even though she received 12 no’s, she was committed to her path, and did not give up.

Young artists not only share Carole’s struggles and triumphs, they share her unwavering dedication to her craft. But they need your help.

The Jean Murray - Moray Sinclair Theatre Scholarships help students for up to four years of training at accredited theatre schools or university theatre programs. Over the years, we’ve all benefited from seeing them on stage.

Scholarships play a vital role in providing financial assistance to students pursuing their passion for the arts. Just ask Matthew Fletcher, Chase Winnicky or Rhea Rodych-Rasidescu - all scholarship recipients!

The impact goes beyond financial assistance. By investing in the training and education of aspiring theatre artists, your support creates a pathway for them to excel in their craft.

Join us as we empower the next generation of theatre artists, both onstage and behind the scenes! Right now, all online donations are being MATCHED up to \$5,000 by the Zita and Mark Bernstein Family Foundation.

Each dollar goes directly to the students to support their training.

Please give generously when the hat is passed or donate online with this QR code. ●

**SCAN HERE
TO DONATE
TODAY!**





Empowering
creative
young minds

Proudly supporting
Royal Manitoba Theatre Centre

Canada Life and design are trademarks
of The Canada Life Assurance Company.

canada  TM

Great theatre
lives here.

BMO



We are pleased to support the **Royal Manitoba Theatre Centre** and the artists who have been captivating audiences with exciting, innovative, and entertaining productions.

BMO is proud to be the 2023/24 **Tom Hendry Warehouse** Season Sponsor.